

Salt Lake City

International Airport Guide





services and facilities

AIRPORT INFORMATION — SIMPLIFY

Simplify is a 24-hour airport information service, accessed by calling 801-359-EASE (3273), that offers current information on airport-related issues such as security procedures, parking, possible road construction, or to arrange for assistance at the airport.

BANKING/ATMS

Zions Bank operates in the lobby of Terminal Two. They offer full service banking including foreign currency exchange from 9:00 a.m. to 5:00 p.m., Monday through Friday. Their phone number is 801-524-4776. Zions Bank Automated Teller Machines (ATMs) are located next to the bank, in the ground transportation area in Terminal Two and in the Terminal One lobby. Additional ATMs are located throughout the airport and serve members in the following networks: Fastbank, Pulse, Visa, Plus, MasterCard, Cirrus, Maestro, American Express, Discover and Quest.

CHARGING ELECTRONIC EQUIPMENT

Power outlets are available throughout the terminals. Power strips have been installed in the connector between Terminal One and Terminal Two specifically for this purpose.

COURIER SERVICE

Federal Express drop boxes (with a workstation and supplies) are located at the top of Concourse A in Terminal One and on the connector between Concourses C and D in Terminal Two.

COPYING

Copying is offered at Zions Bank in the lobby of Terminal Two.

CUSTOMS

Customs is housed on the first floor in the International Terminal. Hours are 8:00 a.m. to 4:30 p.m., Monday through Friday.

FAX MACHINES

Assistance with faxes may be found at Zions Bank in the lobby of Terminal Two.

FOREIGN CURRENCY EXCHANGE

Currency exchanges can be arranged at Zions Bank in Terminal Two (see hours, etc. under Banking/ATMs).

FREIGHT AND CARGO HANDLING

Arrangements can be made through the airlines or with over 30 companies that serve Salt Lake City.

GOLF COURSE

Wingpointe is situated south of the terminals. Designed by Arthur Hills & Associates, it is an 18-hole course set into the natural environment. It is open during the season from sunrise to sunset. Walking rates are \$15 for nine holes and \$30 for 18 holes. Riding rates are \$7 per rider per nine holes. The clubhouse features a pro shop and restaurant, and is operated by the Salt Lake City Parks and Recreation Department. The phone number is 801-575-2345.



services and facilities, continued

INFANT CARE

Facilities for dealing with the needs of babies and small children are located in both terminals and on Concourse E. In Terminal Two, infant care can be found on the second level inside the women's restroom to the left of the security screening area, at the top of Concourse D between gates D3 and D5, and next to the restrooms on Concourse E. In Terminal One, an infant care room is across from the ticket counter in the lobby. Diaper changing facilities can also be found in most of the restrooms.

INTERNET ACCESS - FREE WIFI IS AVAILABLE

To access free WiFi go to SLCAirport.wifi and click connect (refer to the WiFi section of this brochure for more information).

Internet access is available at Regus Express via pay email stations located in phone banks throughout the concourses.

LODGING

Arrangements can be handled through direct telephone lines located at the courtesy phone center in both terminals. Hotels in downtown Salt Lake City and the International Center (west of the airport) are easily accessible within 15 minutes.

LOST AND FOUND

Items are handled by each airline unless lost or found in the airport itself. For airport lost and found call 801-575-2427. Contact your airline regarding lost luggage or other items lost or found on an airplane.

LOUNGES

Cocktails, wine and beer are served in the Terrace Restaurant and Lounge on the third level of Terminal One and The Hive on lower Concourse B, Wasatch Brew Pub on Concourse D, and Finnigan's on Concourse E. They can also be found in Dick Clark's American Bandstand Grill on the connector between Concourses C and D and Squatters Pub Brewery on Concourse C.



LUGGAGE CARTS

Carts are available outside both terminals, in the baggage claim areas and throughout the concourses from coin-operated machines for \$4.00 (there is a \$.25 refund for returning the cart to a stand). Sky cap service is available in front of both terminals for most airlines and in the parking terrace for Terminal Two passengers only.

MAIL FACILITIES

Both terminals have mail drop boxes beyond security screening. In Terminal One, the mailbox is located at the top of the escalator near the entrance to Concourse A. In Terminal Two, the mailbox is on the connector between Concourses C and D, near the Delta Sky Club. Stamps are available at most news stands, gift shops, and from ATMs beyond the security screening check points.

MEDICAL EMERGENCIES

In the airport, emergencies are handled by the Operations Division. To call for assistance, dial 801-575-2405 or 0 on a white paging phone.

Automatic Emergency Defibrillators (AEDs) are located in the following areas: Terminal One security screening checkpoint; top of Concourse A; top of Concourse B; bottom of Concourse B; top of Concourse C; top of Concourse D; Concourse E seating area; end of Concourse C and D parking garage (Terminal One entrance), Terminal Two lobby; by Terminal Two pre-pay booth in the parking structure; and in the International Terminal lower lobby.



services and facilities, continued

NEWS STANDS

Daily News	Terminal One (second level), Rotunda at the top of Concourse D
News	Concourse C
News & Gifts	Concourse C and E
News & Views	Concourses A, B and D
News Exchange	Terminal Two Lobby

PAGING

Paging is accomplished by dialing 0 on a white paging phone located in the telephone banks throughout the airport or by dialing 801-575-2600.

PARKING AMENITIES

Users of the parking facilities have the option of paying for parking as you leave the terminals at machines located at the end of the sky bridges in both terminals. This "pay-on-foot" option, allows parkers to pre-pay parking fees and bypass the process at the exit.

Epark is a feature that allows customers to use a major credit card to pay for parking. Customers swipe a card at the entrance to record the start time and, using designated exit lanes, swipe the same card as they leave. Parking fees are automatically charged to the card.

POLICE

The police can be summoned by dialing 801-575-2401 or 0 on a white paging phone.

PLAY AREAS

Recreational areas for small children are located on Concourses A, B and the top of E. They are equipped with toys and a seating area for parents.



Concessions will change beginning July 2011. This list will evolve for the next 18 months and should be considered as a guideline only.

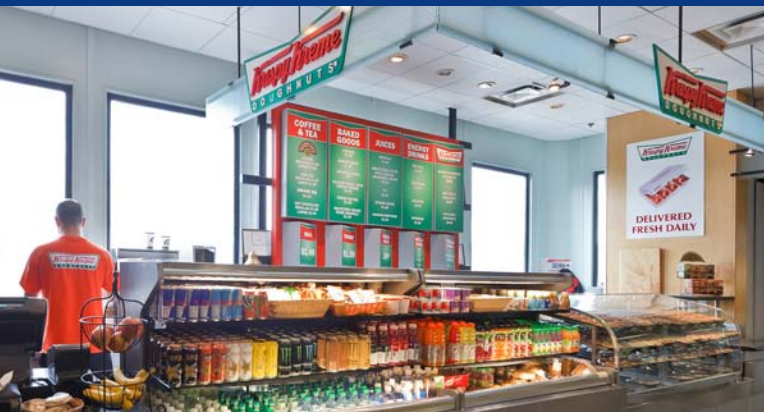
RESTAURANT, FOOD AND RETAIL CONCESSIONS

On the Fly—Urban Markets are located in the lobbies of both terminals and feature freshly made sandwiches, snacks, beverages, coffee and espresso along with a variety of sundries. They are located prior to the security screening checkpoints making them convenient for travelers and for those meeting passengers.

In Terminal One, beyond security screening, the food court in the lobby area features **Starbucks**, **TCBY**, **Pizza Hut**, **Granato's Italian Deli** (a local deli featuring sandwiches, hot entrees, soups, salads and breakfast items) and **Burger King**. **West of Brooklyn**, a gift, news and shopping emporium, is located between the escalators.

Just upstairs, on the second level of Terminal One between Concourses A and B, a row of retail shops features the **Rocky Mountain Chocolate Factory** (candies and confections), **Daily News** (books, magazines, newspapers, sundries and travel products), **The Crosby Collection** (native American and regional jewelry, arts and crafts) and **Brookstone** (innovative and hard-to-find tools, gifts and accessories). A shoe shine stand is also located in this area. On the third level, **The Terrace Restaurant and Lounge** offers full-service dining and cocktail service.

On Concourse A, stores include **News & Views** (magazines, snacks, travel products, newspapers and books), **Quiznos** (subs, salads, soups and desserts) and **Spirit of the Red Horse** (jewelry, clothing, gifts and art inspired by the American Southwest).



services and facilities, continued

Concourse B features **The Great American Bagel Bakery**, **TCBY**, **Vistas** (regional gifts), **News & Views** (magazines, snacks, travel products, newspapers and books) and **The Grove Natural Snacks**. Located on lower Concourse B are **City Deli**, **Blue Burrito Grille**, **The Hive** (lounge and snacks) and **Starbucks**, as well as, **Books, Etc.** and **The Warehouse** (gifts, magazines and snacks).

In the lobby of Terminal Two, **News Exchange** (news and sundries) is located across from the airline ticket counters. **On the Fly—Urban Market** (freshly made sandwiches, snacks, beverages, coffee, espresso and a variety of sundries) is located prior to the security screening checkpoint. **Zions Bank** is just prior to the escalators with full-service banking including foreign currency exchange. Across from baggage claim, the **Salt Lake City International Airport** operates a visitor information desk.

On the second level and beyond security screening on the left are **Starbucks**, **Simply Books**, **Burger King**, **Sbarro the Italian Eatery**, **Dick Clark's American Bandstand Grill and Lounge**, **Your Planet** (environmentally friendly gifts and clothing) and **Regus Express** (full-service business center). Also on the connector leading to Concourse D are **Cinnabon**, **Cross (pens and accessories)**, and **Sporting Eyes** (sunglasses and accessories), and **Brookstone**.

Beyond security screening in Terminal Two on the right is **West of Brooklyn** (gift, news and shopping emporium).

At the top of Concourse C, is a shoe shine stand followed by **Creative Kidstuff** (children's gifts, clothing and toys) and **Krispy Kreme**. Further down Concourse C are **Spirit of the Red Horse** (jewelry, clothing, gifts and art inspired by the American Southwest), **Squatters Pub Brewery** (a local brew pub and restaurant), **Wolfgang Puck Express**, **News & Gifts**, **Wall Street Deli**, **TCBY**, **Air Terminal Gifts** and **The Grove Natural Snacks**.

The rotunda at the top of Concourse D houses **Cinnabon**, **City Deli**, **Manchu Wok**, **Millcreek Coffee Roasters**, **Yovana** (yogurt smoothies, blends and frozen yogurt), **Daily News**, and **Fossil** (Fossil brand watches, sunglasses, leather products and gifts).

Down Concourse D are **Zeta & Company** (trendy apparel, jewelry and accessories), **Vistas** (regional gifts), **News & Views**, **InMotion** (DVD sales and rental), **California Pizza Kitchen**, **Wasatch Brew Pub**, and **The Grove Natural Snacks**.

The lobby area of Concourse E contains **Starbucks**, **Finnigan's** (lounge), **Freshëns** (smoothies and frozen treats), **Quiznos** (subs, salads, soups and desserts) and **Air Terminal Gifts**.

Vending machines are located in the lobby of each terminal featuring hot coffee, pizza and french fries and other machines are located on the concourses on the lower level of the parking garage to accommodate after hour needs for convenient snacks.

RESTROOMS

Restrooms are located in the areas just after you exit security screening in both terminals and throughout the concourses. See the information under Infant Care for details regarding additional facilities. Restrooms labeled as "Special Needs" are available in both terminals and allow for unisex or family needs, along with facilities for those with disabilities. They are located across from the ticket counters in Terminal One, between gates B4 and B6, and at the top of Concourse D in Terminal Two.

SALT LAKE CITY INFORMATION

Both terminals have information desks located across from the baggage claim areas or use web site. Visit www.visitsaltlake.com or www.visitsaltlake.mobi.

ANIMAL RELIEF STATIONS

Animal relief stations are across the street from each terminal in front of the parking garage. Another is located between Terminal Two and the International Terminal. They are grassy areas equipped with waste stations and space to exercise pets and relief animals.

For passengers with relief animals, there are three areas designated for the same purpose on Concourses B, C, and E. Contact your airline personnel to access these areas.

SHOE SHINES

Both terminals have shoe shine stands. The stand in Terminal One is located at the top of the escalators as you enter Concourse B. In Terminal Two, stands are located at the top of Concourse C.

SIMPLIFLY

A 24-hour hotline, 801-359-EASE (3273), Simplify provides airport users with information and assistance.



art collection

The Salt Lake City Department of Airports has selected a variety of artwork that has been integrated into the design of the airport.

The displays are found throughout both terminals, most noticeably on the connectors between terminals.

services and facilities, continued

SKY CAP SERVICE

Sky cap service is available on the curbs in front of both terminals for most airlines. Delta Air Lines offers this service inside the parking garage on the first level in the drive through lane.

SKY CLUB (DELTA AIR LINES CLUB)

Delta Air Lines' Sky Club is located in the connector between Concourses C and D by the moving sidewalk.

SMOKING

Smoking is permitted in designated areas only. Smoking lounges are located on each concourse.

TELEPHONES

TDD phones are available in both terminal lobbies and throughout the concourses.

TRANSLATION

Assistance with translating languages is available via a white paging phone.

VENDING MACHINES

Vending machines featuring hot coffee, pizza and french fries, are located in the lobby of each terminal, additional machines are located in the concourses and on the lower level of the parking garage to accommodate after hour needs for convenient snacks.

WI-FI (WIRELESS FIDELITY)

Free wireless internet service is available throughout the airport. Simply follow the instructions below:

1. Open your computer's wireless network connection window and select SLCAirport.wifi
Then click CONNECT.
2. Once connected, start your computer's browser.
3. A security pop-up will open. Click YES to accept the terms and proceed.
4. Then Click CONNECT to receive free airport wi-fi.
5. The Salt Lake City International Airport homepage will then open.

— You can now *BROWSE* to your desired destination.



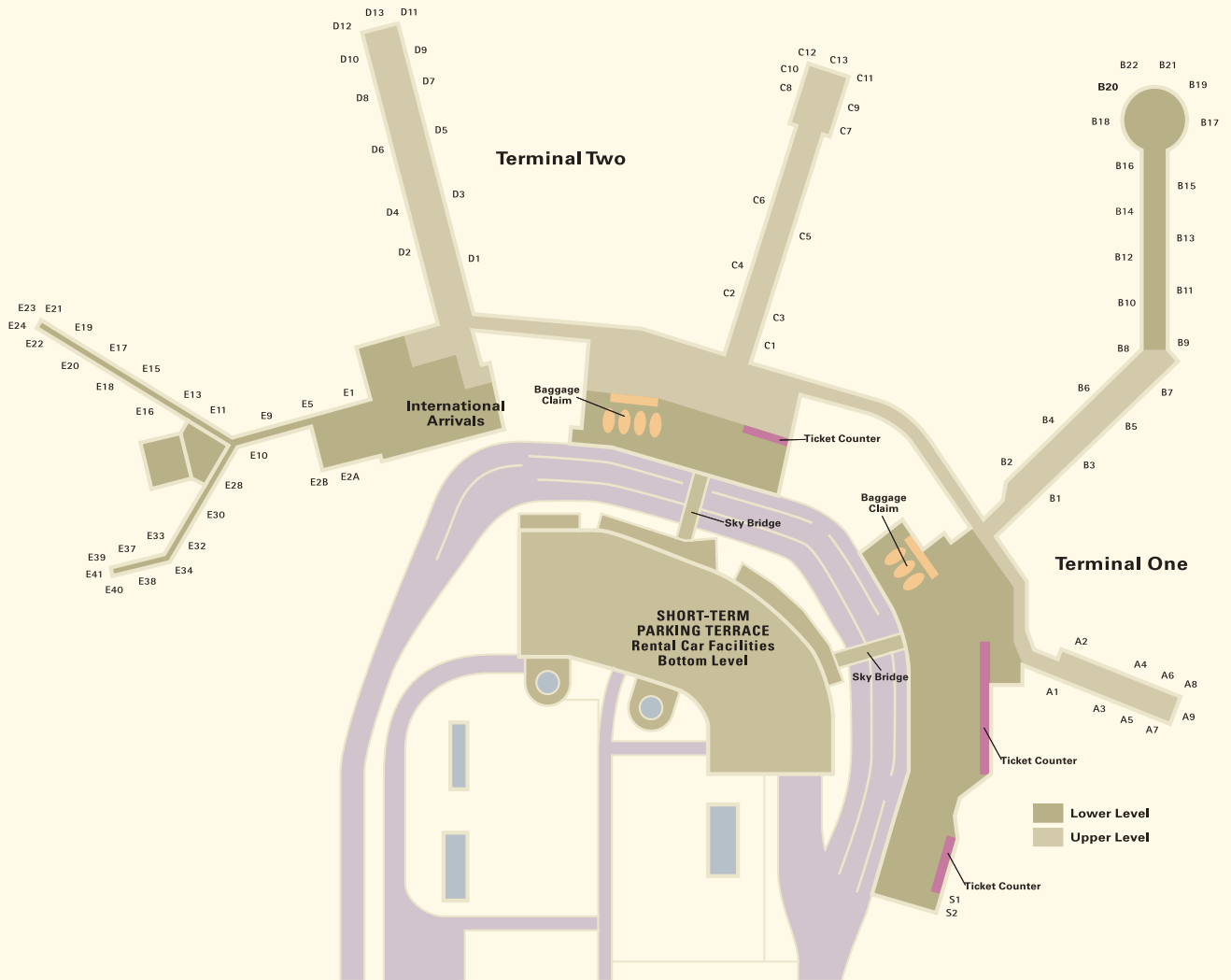
facilities for the physically challenged

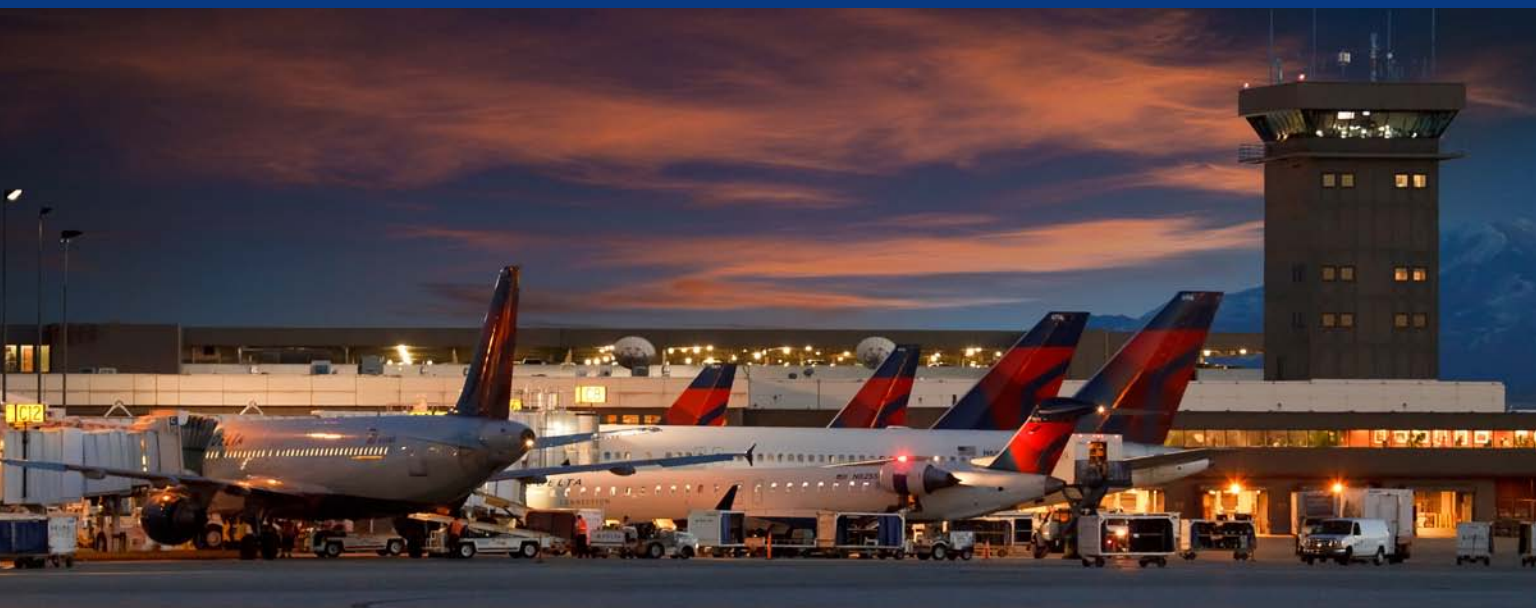
Salt Lake City International Airport has been carefully designed to accommodate those physically challenged. Interpretive (ITY) systems are available at the security screening checkpoints. They are interactive systems that provide a means of communicating without speech. The restaurants, parking lots and restrooms are equipped with the needed facilities.

There are telephones accessible from a wheelchair at the telephone banks and TDD telephones in the lobbies of both terminals. Throughout both terminals there are ramps and elevators. They are located near the stairs and escalators and are prominently marked on the airport directories in the terminals. In addition, airlines will provide wheelchairs or other assistance for their passengers.

For added assistance, call 801-575-2400 or use a white paging phone.

salt lake city international airport





airlines serving salt lake city international

AIRLINE	FLIGHT INFORMATION
American	800-433-7300
Continental	800-525-0280
Delta	800-221-1212
Frontier	800-432-1359
JetBlue Airways	800-538-2583
Southwest	800-435-9792
United	800-241-6522
U.S. Airways	800-428-7322

Telephone numbers are subject to change.

Please pay careful attention to the air carrier information on your ticket. The airline you made a reservation with may not be the one operating your flight.

general aviation

The general aviation facilities are housed on the east side of Salt Lake City International Airport, at South Valley Regional Airport in West Jordan and Tooele Valley Airport. There are two full-service fixed base operators (FBOs) to serve the flying needs of private aviators at Salt Lake City International Airport. Services include aircraft sales and leasing, air charter service, aircraft parts and maintenance, fuel sales and aircraft storage. For more information contact the FBOs listed below:

SALT LAKE CITY INTERNATIONAL AIRPORT (EAST SIDE)

Million Air Salt Lake	801-359-2085
Salt Lake Jet Center	801-595-6438
For hangar rental call	801-575-2894

SOUTH VALLEY REGIONAL AIRPORT

Located at 7536 South 4470 West in West Jordan, houses the following general aviation service:

Leading Edge Aviation	801-561-3581
------------------------------------	--------------





fast facts about the airport

Two terminals

Five concourses

83 gates

Four runways:

Runway 16L/34R	12,003 ft. long
Runway 16R/34L	12,000 ft. long
Runway 17/35	9,596 ft. long
Runway 14/32	5,295 ft. long

300 based general aviation aircraft

21 million passengers were served in 2010

The airport is within 60 miles of 11 world-class ski resorts.

It provides convenient access to five national and 46 state parks.

A gateway to 100 golf courses statewide, 24 in Salt Lake County and 25 more within an hour's drive. Alpine courses in the nearby Wasatch Mountains are world famous. Wingpointe Golf Course, an 18-hole course set into the natural environment, is conveniently located adjacent to Salt Lake City International Airport.

Salt Lake City is in the Mountain Standard Time Zone.

parking

Hourly/daily and economy parking facilities are provided at the airport for passenger convenience, depending on the length of your stay. For current parking rates, call 801-575-2886.

The economy parking lot is located south and west of the terminal buildings. The airport provides free shuttle service between the parking lot and the terminals. There is a pedestrian walkway on the north end of the lot that leads through the rental area and to the terminals.

The daily/hourly parking garage is located directly southwest of the terminals. Level one is restricted to hourly parking only. Disabled parking is available on all three levels of the hourly/daily garage and around each shuttle stop in the economy lot.

PARKING AMENITIES

Users of the parking facilities have the option of paying for parking as you leave the terminals at machines located at the end of the sky bridges in both terminals. This "pay-on-foot" option allows parkers to pre-pay parking fees and bypass the process at the exit.

Epark is a feature that allows customers to use a major credit card to pay for parking. Customers swipe a card at the entrance to record the start time and, using designated exit lanes, swipe the same card as they leave. Parking fees are automatically charged to the card.

For more information, call the parking system administrator at 801-575-2886.

park 'n wait lot

There is a parking lot south of the airport complex where you can wait free of charge for the passenger you are picking up to arrive at the terminal curb. As you enter the airport, look for signs on the right. There are flight information display boards in the lot so you can monitor flight status. When your passenger arrives, instruct them to alert you by cell phone when they are on the curb to be picked up.



transportation

There is a wide variety of ground transportation options from Salt Lake City International Airport.

The major ground transportation providers have a presence at ground transportation desks in the baggage claim area of each terminal.

Rental car companies are located on the lowest level of the parking terrace. Rental car companies and their phone numbers are also listed.

GROUND TRANSPORTATION PROVIDERS WITH DESKS

All Resort Express 800-457-9457
local in Park City 436-649-3999
www.allresort.com

Alta Shuttle toll free 800-742-3406
801-274-0225
www.altashuttle.com

Canyon Transportation toll free 800-255-1841
801-255-1841
www.canyontransport.com

Express Shuttle toll free 800-397-0773
801-596-1600
www.expressshuttleutah.com

Park City Transportation toll free 800-637-3803
435-649-8567
www.parkcitytransportation.com

Xpress4Less (855) 645-9388

RENTAL CARS *located in the lowest level of the parking terrace*

Advantage 801-322-6090
Alamo 801-575-2211
Avis 801-575-2847
Budget 801-575-2821
Dollar 801-575-2580
Enterprise 801-537-7433
Hertz 801-575-2683
National 801-575-2277
Thrifty 801-595-6677
Fox (off-airport) 801-401-0288



TAXIS — LOCATED CURBSIDE/TERMINAL FRONTS

City Cab 801-363-8400
Ute Cab 801-359-7788
Yellow Cab 801-521-2100

TaxiPass kiosks are located in front of each terminal near the taxi stands. This automated service allows customers to use a major credit card to charge taxi fares. Customers insert the credit card into the kiosk and receive a voucher (TaxiPass) which they fill in, sign and give to the driver in payment.

LIMOUSINES AND VANS

Check local yellow pages.

BUSES

Greyhound Bus 800-231-2222
or 801-355-9579
www.greyhound.com

Utah Transit Authority (UTA) 1-800-RIDE-UTA (743-3882)
and 801-RIDE-UTA
www.rideuta.com

UTA service hours are 6:30 a.m. to 10:30 p.m., Monday through Friday, 7:30 a.m. to 10:30 p.m. on Saturday, and 9:00 a.m. to 6:00 p.m. on Sunday.

A UTA bus leaves the airport for the city center every 30 minutes during the day and every 60 minutes after 7:00 p.m. One way fare is \$2.25. Bus stops are located in the parking structure between Terminal One and Terminal Two. Limited service is available on weekends and holidays.

HOTEL COURTESY VANS

Arrangements can be made through the direct-line hotel phone banks in both baggage claim areas.





travel tips

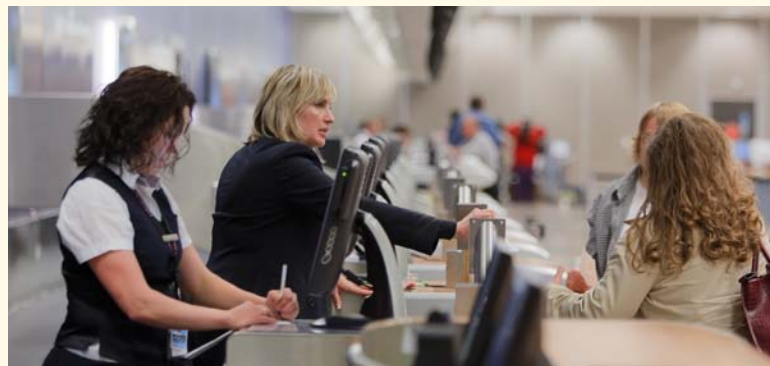
- Weather conditions may affect your travel plans. Please call your airline ahead of time to check conditions and status of your flight. Allow extra time on rainy, snowy or foggy days and during holidays. Salt Lake City weather conditions are available from the National Weather Service at 801-524-5133.
- Check with your airline regarding the time you should arrive at the gate for departure. Airlines have different guidelines, but a general rule to follow is to be in the terminal at least 90 minutes prior to the published departure time for domestic flights, and at least two hours prior to the published departure time for international flights.
- Use luggage identification tags on all pieces and be sure your name and address are legible. Remove destination tags attached to your luggage by the airlines after every flight.
- Hand carry all prescription medicine, jewelry, currency and important documents in your carry-on luggage.
- When you park your car at the airport, be certain to use the correct lot. Park in the hourly/daily lot for quick visits and in the economy lot for longer stays. The rates are structured in your favor if you use the correct parking area.
- Make sure that you turn off your headlights, lock your car and take your keys (many travelers inadvertently leave keys in the car trunk while removing luggage).
- Write down the section and area you parked in and keep it with your return ticket so you can easily find your car upon your return.
- Don't leave valuables or any visible packages, stereo equipment, telephones, etc. in your car.
- When your child travels alone, please thoroughly check the guidelines each airline provides. Be sure you inform the airline that the passenger you are booking is a child and ask for special assistance.
- Do not leave your baggage unattended.
- Check the Transportation Security Administration (TSA) web page for the latest security screening information at www.tsa.gov.

freeway access



helpful phone numbers

24-hour Control Center	801-575-2400
Emergency	801-575-2405
Environmental Information	801-575-2991
Hangar Rental	801-575-2894
Lost and Found	801-575-2427
Medical Services	801-575-2405
Paging	801-575-2600
	(or "0" on a white paging phone)
Parking	801-575-2886
Police	801-575-2401
Simplify (airport information)	801-359-3273
Transportation Security Administration	801-606-6020
Weather	801-524-5133



retail concessions by category

Concessions program will change beginning July 2011.
This list is only a guideline.

ALL FOOD AND DINING OPTIONS

Blue Burrito Grille	Concourse B (Lower Level)
Burger King	Terminal One Food Court, between Concourses C and D
California Pizza Kitchen	Concourse D
Cinnabon	Between Concourses C and D, Rotunda at the top of Concourse D
City Deli	Concourse B (Lower Level), Rotunda at the top of Concourse D
Dick Clark's American Bandstand Grill	Between Concourses C and D
Finnigan's	Concourse E
Freshens	Concourse E
Granato's Italian Deli	Terminal One Food Court
The Great American Bagel Bakery	Concourse B
The Grove Natural Snacks	Concourses B, C and D
The Hive	Concourse B (Lower Level)
Krispy Kreme	Top of Concourse C
Manchu Wok	Rotunda at the top of Concourse D
Millcreek Coffee Roasters	Concourse D, Rotunda at the top of Concourse D
On the Fly—Urban Market	Both terminal lobbies—baggage claim
Pizza Hut	Terminal One Food Court
Quiznos	Concourses A and E
Sbarro the Italian Eatery	Between Concourses C and D
Squatters Pub Brewery	Concourse C
Starbucks	Terminal One Food Court, Concourse B (Lower Level), top of Concourse C, Concourse E
TCBY	Terminal One Food Court, Concourses B and C, Rotunda at the top of Concourse D
The Terrace Restaurant and Lounge	Terminal One Third Level
Vending machines	Concourses A, B, C, D, E and lobbies of both terminals
Wall Street Deli	Concourse C
Wasatch Brew Pub	Concourse D
Wolfgang Puck Express	Concourse C
Yovana	Rotunda at the top of Concourse D

FULL SERVICE RESTAURANTS

Dick Clark's American Bandstand Grill	Between Concourses C and D
Squatters Pub Brewery	Concourse C
The Terrace Restaurant and Lounge	Terminal One Third Level

BREAKFAST

Burger King	Terminal One Food Court, between Concourses C and D
California Pizza Kitchen	Concourse D
Cinnabon	Between Concourses C and D, Rotunda at the top of Concourse D
City Deli	Concourse B (Lower Level), Rotunda at the top of Concourse D
Dick Clark's American Bandstand Grill	Between Concourses C and D
Granato's Italian Deli	Terminal One Food Court
The Great American Bagel Bakery	Concourse B
Millcreek Coffee Roasters	Concourse D, Rotunda at the top of Concourse D
On the Fly—Urban Market	Both terminal lobbies—baggage claim
Pizza Hut	Terminal One Food Court
Quiznos	Concourses A and E
Sbarro the Italian Eatery	Between Concourses C and D
Squatters Pub Brewery	Concourse C
Starbucks	Terminal One Food Court, Concourse B (Lower Level), top of Concourse C, Concourse E
The Terrace Restaurant and Lounge	Terminal One Third Level
Wall Street Deli	Concourse C

COFFEE SHOPS

Millcreek Coffee Roasters	Concourse D, Rotunda at the top of Concourse D
On the Fly—Urban Market	Both terminal lobbies—baggage claim
Squatters Pub Brewery	Concourse C
Starbucks	Terminal One Food Court, Concourse B (Lower Level), top of Concourse C, Concourse E

In addition, coffee is served at most of the food outlets.

LOUNGES

Dick Clark's American Bandstand Grill	Between Concourses C and D
Finnigan's	Concourse E
The Hive	Concourse B (Lower Level)
Squatters Pub Brewery	Concourse C
The Terrace Restaurant and Lounge	Terminal One Third Level
Wasatch Brew Pub	Concourse D

SERVICES

ATMs	Located in both terminals and throughout the concourses
Information Desks	Both terminal lobbies—baggage claim
InMotion (DVD sales and rental)	Concourse D
Regus Express	Terminal Two on the connector between Concourses C and D
Shoe Shine	Top of the escalators in Terminal One, top of Concourse C and on Concourse E in Terminal Two
U.S. Mail Boxes	Terminal One Lobby beyond security screening, upstairs next to Rocky Mountain Chocolate Factory, Terminal Two on the connector between Concourses C and D
Zions Bank	Full-service banking and foreign currency exchange, Terminal Two Lobby

SHOPPING

Air Terminal Gifts	Concourses C and E
Books, Etc.	Concourse B (Lower Level)
Brookstone.	Terminal One, Second Level, Between concessions C & D.
Creative Kidstuff	Top of Concourse C
Crosby Collection	Terminal One Second Level
Daily News	Terminal One Second Level, Rotunda at the top of Concourse D
Fossil	Rotunda at the top of Concourse D
News	Concourse C
News & Gifts	Concourses C and E
News & Views	Concourses A, B and D
News Exchange	Terminal Two Lobby
On the Fly—Urban Market	Both terminal lobbies—baggage claim
Rocky Mountain Chocolate Factory	Terminal One Second Level
Simply Books	Top of Concourse C
Spirit of the Red Horse	Concourses A and C
Sporting Eyes	Between Concourses C and D
Vistas	Concourses B and D
The Warehouse	Concourse B (Lower Level)
West of Brooklyn	Terminal One Lobby, Terminal Two Second Level
Cross	Between Concourses C and D
Your Planet	Between Concourses C and D
Zeta & Company	Concourse D



Salt Lake City
Department of Airports

Contact Information:

776 North Terminal Drive | Salt Lake City, Utah 84116
P.O. Box 145550 | Salt Lake City, Utah 84114
(800) 595.2442 | 801.575.2400 | www.slcairport.com

Helpful Websites:

Utah Office of Tourism www.utah.travel
Ski Utah www.skiutah.com
Visit Salt Lake www.visitsaltlake.com
www.visitsaltlake.mobi

