

Salt Lake City International Airport
Art Collection

*Art washes from
the soul the dust of
everyday life.*

—Pablo Picasso



Ballet West was established in Salt Lake City in 1963 and ranks among the top professional ballet companies in the United States. This series of photographs was taken by Erik Ostling at scenic locations throughout Utah.

Front Cover: **David Adams**
Angels with Lanterns on Ottiwi Bridge

Top of **CONCOURSE B**

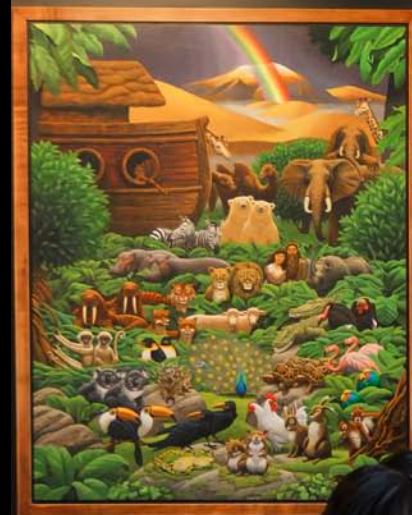


Lower **CONCOURSE B**
Collection by **John Nieto**
Olympic Power Suite
Higher, Swifter, Stronger

Top of **CONCOURSE B**
Collection by **Bevan Chipman**
The Faces of Sudan



*As the sun colors flowers,
so does art color life.*
—John Lubbock



CONCOURSE B

Left: **John Collins**, *Aspens with Fallen Leaves*

Middle: **John Collins**, *Stippled Aspens*

Top right: **Susan Gallacher**, *Tree by the Broken Fence*

Bottom right: **Zelda Bills**, *House on the Lane*

CONCOURSE B

Collection by **Chris Paul Miles**

The art is periodically rearranged to accommodate the evolving demands on airport space, creating a moveable visual feast.



CONCOURSE A

Right: Mixed Artists, Top of **CONCOURSE E**

Connector between **CONCOURSE C** and **D**

*Below left: **Joe Mutasa**, *Waiting**

*Below left: **Agnes Nyanhongo**, *Captivating**

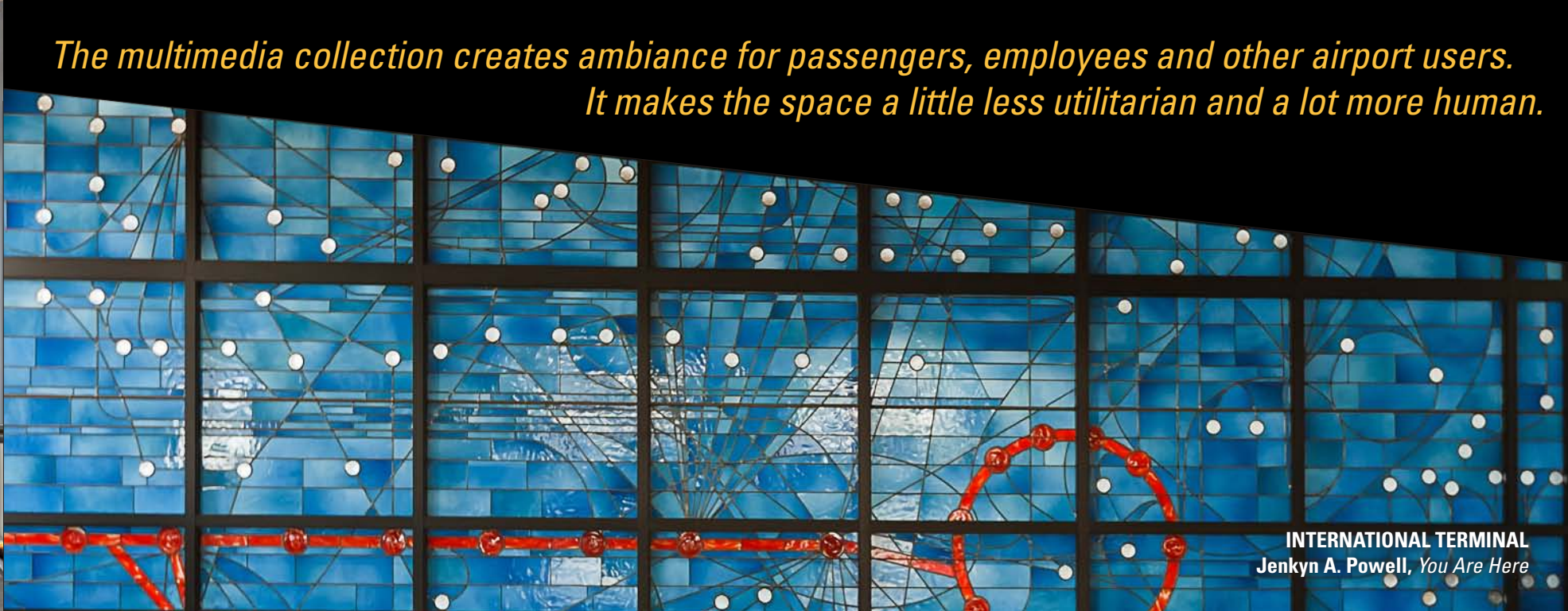
*Below left: **Ngoni Mrewa**, *Fond Embrace**

*Below middle: **Colleen Madamombe**, *Enjoying Our Walk**

*Below right: **Royal Katiyo**, *Where is Mom?**



*The multimedia collection creates ambiance for passengers, employees and other airport users.
It makes the space a little less utilitarian and a lot more human.*



Anton Rasmussen, *Delicate Arch*
TERMINAL ONE

INTERNATIONAL TERMINAL
Jenkyn A. Powell, *You Are Here*

Salt Lake City International Airport Art Collection— *The Salt Lake City Department of Airports has been collecting art since 1977 that is displayed throughout Salt Lake City International Airport.*

David Adams

- Many Were Dancing
- Angels with Lanterns on Ottiwi Bridge
- Kites Tumbled Over Her Meadow
- Untitled Abstract
- Untitled Abstract

Trent Alvey

- Skakopmund Swimmers

Bob Bauer

- The Needles: Canyonlands National Park
- South Caineville Mesa: Wayne County

Michael Bégué

- Overt

Ben Behunin

- Untitled

Zelda Bills

- House on the Lane

Anna Campbell Bliss

- The Discoverers

Penny Bohn

- Autumn's First Light III

Laurie Burns

- Canyons
- Blue Bricks
- Confetti

Richard Burton

- Little Cottonwood Canyon: Wasatch-Cache National Forest

Royden Card

- South Quail Ridge
- San Pete Road
- Dim Day: San Rafael



Bevan Chipman

- The Faces of Sudan: Hyatang
- The Faces of Sudan: Nyagile Nayamuch
- The Faces of Sudan: Sisters and Lam
- The Faces of Sudan: Nyapulo
- The Faces of Sudan: Nyagile, Nyapulo, and Liep
- The Faces of Sudan: African Family

Jason Christensen

- Sipapu Bridge The Subway
- The Toad Stools
- Hovenweep Castle
- Mule Canyon Ruin
- White Sands
- Yellow Bee Plant
- Wildflowers
- Lichen/Aspen
- Two Skies
- Mt. Olympus

John Collins

- David County Fields
- Untitled (landscape)

Marian Dunn

- Cottonwoods: River Bottoms
- Aspens with Fallen Leaves
- Stippled Aspens
- Salt Lake City Sunset
- Panguitch Moonrise
- Puffy Clouds and Pastures
- Cottonwoods
- Orange Horizon
- Light in the Canyon
- Springtime Aspens
- Sweet September
- Sunset on Red Bluffs
- Cobalt Colored Country
- Untitled (autumn landscape)

Marianne Cone

- Avebury Stones
- Peoa Farmscape

Kim Despain

- Aspen Grove on Gates Lake: Mount Terrel

Toni Doilney

- Patchwork Houses
- Blue Houses
- Foothill Village

Peter Eckert

- Rear View Mirror #1
- Aspens
- Alpine Loop Aspens
- Uintah Aspens
- Torrey Mesa
- Sagebrush Landscape
- Evening Canyon

Darryl Erdmann

- Monolith II
- Anomaly

Jerry Fagerlund

- Memory Grove: City Creek Canyon

Ed Firmage, Jr.

- Lake at Sunset
- Teton Winter
- Tanglewood
- Pioneer Church
- Evensong

Susan Gallacher

- Tree by the Broken Fence
- The Last Light
- Sheep at the Old Farmstead

John P. George

- Utah Farmstead
- Coyote Gulch: Glen Canyon Recreation Area
- Sunrise Point: Bryce National Park

Monika Gerszewski

- A Kodak Moment
- Vastness within
- Mount Olympus

Brent Godfrey

- Crazy Quilt
- Wrapped in the Past
- Eastern Trilogy I
- Eastern Trilogy II
- Eastern Trilogy III
- Fool's Gold

Janice Walker Hall

- Hillside Farm
- Winter Solstice

Jeanne Hansen

- Winter Solstice

John Hess

- Yemen Door 1
- Color Dance with Squares
- Gyroscope

- Color Dance with Triangles
- Yemen Door 2

Willie Holdman

- Zion Fog
- Totem Pole
- Delicate Arch
- Happy Ridge
- Meltdown
- Threesome
- Colors of Moab
- Hoodoo Trails
- Ray of Hope
- Hanging On
- Split Boulders
- Powell Waterhold
- Emerald Falls
- White Baldy
- Mountain Goats
- Meander
- Emerald Lake
- Cottonwood Waterhold
- Moose Encounter
- Wasatch Transition
- Heavenward
- Aspen Sunburst

- Snow Angel
- Valley of Frost
- Frozen Bridal Veil

Kelly Holtman

- String Theory
- Facing Fear
- Antelope Buffalo Island
- Joy to Creation

Margaret Hunt

- Blue Reverie
- Chelsea Bentley James
- Night Horizon

Craig Jenkins

- Petroglyphs
- Cactus Sunset

Earl Jones

- Bear River Valley
- Susanne Kanatsiz
- Untitled (abstract)

Royal Katiyo

- Where is Mom?
- Brian Koch
- Approaching Storm

Craig Law

- Cache Junction

Josy Lownes

- Untitled (stylized landscape)
- Untitled (five caroling figures)
- Basket Weavers

Nancy Maxfield Lund

- City Lights
- Karen's Tulips

Colleen Madamombe

- Enjoying Our Walk

David Maestas

- Untitled I
- Resolved
- Untitled II
- Sage Dream
- Sage Dream
- Sage Dream

McRay Magleby

- Cultural Olympiad 2002 Commemorative Print
- Cultural Olympiad 2002 Commemorative Print

- Cultural Olympiad 2002 Commemorative Print

Eva Malin

- Mount Timpanogos
- Sandstone Swirls: Arches National Park

Shirley McKay

- Canyon Suite II
- Canyon Suite
- Unity
- Time Without End
- Tranquility
- Metamorphosis

Chris Paul Miles

- Ark
- The New Guy
- The Fox
- The Owl and the Pussycat
- The Traveler
- An Evening Story
- Babe in the Woods
- The Moonlighter
- The Talent Show
- Hansel and Gretel

- Bearsong
- The Letter
- Magritte
- Curious Bears
- Night Watch
- Adjustment
- Money Fields

Dottie Miles

- Evening

Kent Miles

- Red Cloud Overlook: Flaming Gorge
- Red Cloud Overlook: Flaming Gorge

Bart Morse

- Curve of the River
- Coyote Canyon
- Source of Light
- Passage to the River
- Painting
- Spring Storm
- Rock Face

Ngoni Mrewa

- Fond Embrace



Steve Mulligan

- Cottonwoods Courthouse Wash

Joe Mutasa

- Waiting

Rodger Newbold

- Wall Detail: Capitol Reef National Park

John Nieto

- Olympic Power Suite: Higher
- Olympic Power Suite: Swifter
- Olympic Power Suite: Stronger

For more information visit our
web page at: www.slcaairport.com
or call (801) 575-2096.



Salt Lake City
International Airport

Salt Lake City Department of Airports

P.O. Box 145550, Salt Lake City, Utah 84114



*No portion of this publication may
be reproduced without written
permission from the Salt Lake City
Department of Airports.*

The information contained in this
publication is current as of June 2011.

Art Collection, *continued*

Agnes Nyanhongo

– Captivating

N. Nyazvigo

– Untitled

(Splendor of Growth)

John O'Connell

– Dream Cage

Diane Orr

– The Wolfman Panel

– The Cowboy's Secret

– Anasazi Hands

Erik Ostling

– Ballet West

Photographs

M'lisa Paulsen

– Going Home

Mendel Peterson

– Untitled still life,
*interiors, historic
buildings*

Emily Plewe

– Effervesce

– Apogee

Jenkyn A. Powell

– You Are Here

Mary Pusey

– High Water Mark

Anton Rasmussen

– Delicate Arch

– Great White Throne

– Dead Horse Point

Jennifer Rasmusson

– Stitched Together

– Trumpeting

– Winter Mint

– The World at Her Feet

John Schaefer

– Big Cottonwood

Canyon: Wasatch

Cache National Forest

Eric Schramm

– Logan River : Wasatch

Cache National Forest

Steven K. Sheffield

– Refuge

– Bear River Refuge

– Canyon Rim

– Abstract #1

– Abstract #2

– Sidewalk Graffiti



– Simple Pleasures 1
– Simple Pleasures 2
– Ascendant
– Looking for Trouble

Dennis Smith

– Flying Machine

Douglas Snow

– Desert Storm

Dana Sohm

– The Mittens

– Sandstone Path

– Sandstone Swirls

Trevor Southey

– Close to the Shore
(Utah Lake)

LeConte Stewart

– Mountain Range

– Farmhouse

Gregory Stocks

– Sky High



Bonnie Sucec & Day Christensen

– The Lake

John Telford

– Old Saltair Site:

Great Salt Lake

– Little Cottonwood

Canyon: Wasatch

Cache National Forest

Darrell Thomas

– Timpanogos

– Near Kamas

– Willard Peak

– Levan

– Knight McPolliin Barn

– Huntsville

– Red Rocks

on the Virgin

Lamar Walbeck

– Waterfall



Chris Wangsgard

– Zions Narrows:
Zion National Park

Joe Washington

– Sand Dunes:
*Little Sahara
Recreation Area*

Jay Wiseman

– American Fork Canyon:
Uintah National Forest

Fred Wright

– Pleasant Creek: Capitol
Reef National Park

