



Advisory Board
Meeting

November 15, 2023

Agenda



Advisory Board Meeting

November 15, 2023

Pursuant to City Code 2.14.060(A) and Utah Code section 52-4-207(2), the Airport Advisory Board adopted a rule permitting electronic meetings for this Board, regardless of whether a quorum is present at an anchor location, so long as such meetings comply with the Open and Public Meetings Act.

To access the meeting please visit:

<https://saltlakecity.webex.com/saltlakecity/j.php?MTID=m1135b3e244a2e479aff44918a27f960e>



ADVISORY BOARD MEETING AGENDA

15 November 2023

9:00 A.M.

CONSENT

- A. Minutes of the 18 October 2023 Meeting

DISCUSSION

- A. Director's Report – Bill Wyatt, Executive Director, SLCDCA
- B. Airport Redevelopment Program (ARP) Update – Mike Williams, ARP Director, SLCDCA
- C. Revenue Diversion -TJ Roskelley, Anderson & Kreiger LLP

MEDIA CLIPPINGS

Media Clippings –November 2023

INFORMATION ITEMS

Air Traffic Statistics – September 2023

Construction Report –November 2023

The next meeting will be held on **Wednesday, January 17, 2024**, at 9:00 a.m. Meetings are usually held in the Board Room, located on the third level of the airport terminal and via Web-ex unless otherwise posted. People with disabilities may make requests for reasonable accommodation no later than 48 hours in advance in order to attend this Airport Advisory Board Meeting. Accommodations may include alternate formats, interpreters, and other auxiliary aids. This is an accessible facility. For questions or additional information, please contact Brett Christensen at 801-575-2042.



Advisory Board
Meeting

November 15, 2023

Minutes

SALT LAKE CITY DEPARTMENT OF AIRPORTS MINUTES OF ADVISORY BOARD MEETING

October 18, 2023

Members Present: Theresa Foxley
John Bradshaw
Hoang Nguyen
Dirk Burton
Tye Hoffman
Roger Boyer*

City Council Sam Owen*
Victoria Petro-Eschler*

Department of Airports: Bill Wyatt, Executive Director
Brett Christensen, Executive Assistant
Eddie Clayson, Director of Maintenance
Medardo Gomez, ORAT Director
Brady Fredrickson, Director of Planning and Environmental
Pete Higgins, Chief Operations Officer
Brian Butler, Chief Financial Officer *
Mike Williams, ARP Program Director
Nancy Volmer, Communication and Marketing Director
Melyssa Trnavskis, Director of Design and Construction Mgmt.
Shaun Anderson, Airport Controller
Brian Sloan, Police Lieutenant, SLCPD*
David Quealy, Senior City Attorney

Other: Paul Skeen, Eide Bailly
Andy*
Brian Bangerter*
David Chipman*

Theresa Foxley called the meeting, held in-person at the SLCPDA Admin Offices Board Room and via Webex, to order at 9:02 a.m. (* indicates the party attended virtually)

AGENDA

A. Minutes

A motion was made by Tye Hoffman and seconded by John Bradshaw to approve the minutes of August 16, 2023 as presented. All votes were affirmative; motion passed.

B. Director's Report

Bill Wyatt, Executive Director, updated the Airport Advisory Board regarding current events.

- Due to the UEA Conference the parking garage has been at capacity and the overflow lot was opened.
- Phase 4 concession will be sent out Oct. 27th. Anyone who proposes is prohibited from contacting Board Members. Please refer them to Cole Hobbs with any questions.
- Oct. 31, we open the remaining 13 gates on A concourse East
- Thank you to Theresa Foxley for overseeing the opening of the Hoberman Arch
- The new art installation on the entrance in the Airport will be dedicated on the 8th of November
- We are beginning to look at expansion and improvements with the bag handling system

Hoang Nguyen commented on the labor shortage, stating when there is a vacancy in the restaurant industry there are multiple people applying for that position. Bill Wyatt went on to add, with the opening of the 13-gate expansion we will have a few interesting concepts, including Hudson self-checkout.

C. Airport Redevelopment Program (ARP) Update – Mike Williams, ARP Director, SLCDA

Mike Williams, Airport Redevelopment Program (ARP) Director, presented an update on the

- Safety, Statistics and Schedule
 - 12.9 million trade hours
 - 832 trade workers (week ending 10/06/2023)
- Near Term Schedule Milestones
- Airport Redevelopment Program Overall Budget
- Concourse 'A' East/Central Tunnel/Airfield
- Airfield
 - Taxiway Y1 and Taxiway H Re-Construction complete and operational.
- Concourse 'B' East – 8 Gates (Phase 3)
 - Phase 3 goal is getting the building dried in. Next week pile driving will start.
- Concourse 'B' East – 16 Gates (Phase 4)
- Overall Phase 2, Phase 3 and Phase 4 Phased Delivery
 - Gate Delivery, no change
- Concourse A East – Gate A26, A28, A30, A32 Opening – 8/22/2023

John Bradshaw asked if the decision to pivot and deliver early paid off in terms of time and money? Wyatt explained that because of Covid the HD team was able to develop a complicated phasing program saving us years of construction.

D. Audit Purpose and Results - Paul Skeen, Eide Bailly

Paul Skeen presented an update on the Audit Purpose and Results. Main points included were,

- Audit Standards
 - Risk based approach.
 - Look at the opportunity for management to manipulate the financial results.
 - Revenue Recognition
- No Difficulties with the Airports Audit
 - No adjustments
 - No disagreements with Management
- PFC Program

E. Review of Financial Position – Shaun Anderson, Airport Controller, SLCDA

Shaun Anderson presented a Review of the Financial Position. Main points included were,

- FY 2023 Financial & Operational Highlights
 - Passenger traffic increased 2.7% over FY 2022
 - Operating expenses under budget by 5.4%
- Enplaned Passenger Traffic
 - 13.1 million enplanements in FY23
- CPE Ten Year History
- Budget Comparison
- Airline Use Agreement Rates and Charges
- Comparison of Actual Airline Revenue
- Airline Revenues Percentage of Total Operating Revenue
- Comparison of Actual Non-Airline Revenue
 - Landside operations, concession programs, leases
 - Big increases in parking. Passengers are staying away longer.
 - The average transaction increased by \$3.17 in the parking garage.
 - The Economy lot increased by \$5.89 per transaction.
- Non-Airline Revenue per Passenger Continues to Climb

Bradshaw asked how the Airport came in at 5.4% under budget. Shaun Anderson explained we put in some contingencies. A lot of savings comes in from our salaries and wages with vacancies. Wyatt went on to add we budget conservatively for the chemicals on the airfield because we never know what kind of snow season we will have.

Nguyen inquired about the use of chemicals and the environmental impact the Airport has. Wyatt explained we collect and treat the chemicals. We sell them back to the original manufacturer who then reconditions them, we then purchase them back the following year.

Theresa Foxley adjourned the meeting at 10:17 a.m

Theresa Foxley, Chair

Date

Erin Mendenhall, Mayor

Date



Advisory Board
Meeting

November 15, 2023

Discussion Items

AGENDA: DISCUSSION ITEM (A)
DATE: 15 November 2023
TO: Airport Advisory Board
FROM: Bill Wyatt, Executive Director
SUBJECT: Executive Director's Report

Bill Wyatt, Executive Director, will present a monthly informational report to the Board, which may include:

1. ARP progress
2. Ground transportation update
3. Concessions and rental cars
4. Airport safety and security
5. Airport facilities and operations
6. General aviation
7. Passenger and airport users
8. Environmental matters
9. Financial condition
10. Legislative issues
11. Airlines
12. Communications and marketing

AGENDA: DISCUSSION ITEM (B)
DATE: 15 November 2023
TO: Airport Advisory Board
FROM: Bill Wyatt, Executive Director
SUBJECT: Airport Redevelopment Program Update

Mike Williams, Airport Redevelopment Program (ARP) Director, will present an update on the SLC Airport Redevelopment Program (presentation on file).



AIRPORT REDEVELOPMENT PROGRAM

Status Update 11/15/2023



Safety, Statistics and Schedule



Safety Statistics

Numbers for April

- **OSHA National Average**
 - **Lost Time Rate 1.60 Recordable Rate 2.50**
- **HDJV Metrics**
 - **10,740,690 Total Trade Hours worked**
 - **Lost Time Rate 0.24 Recordable Rate 2.30**

Trade Hours for the Program Overall

- **ARP Metrics (HDJV+AOJV)**
 - **12,968,131 Total Trade Hours worked**

Trade Workers on Site

- **792 Trade Workers (week ending 11/03/2023)**

Schedule Status and Critical Path

- **Phase 3 – Completion of Building Skin for Building Dry-in**
- **Phase 3 – Completion of Level 1 West Baggage Make-up Room Reinstallation and Start-up for May 2024**
- **Phase 4 – Completion of Pile Driving and start of Foundations**
- **Overall Program is on Schedule**

Near Term Schedule Milestones



Target Date	Current Date	Description
10/31/23	Complete	Concourse A East - Opened Remaining 13 Gates
10/31/23	Complete	South Apron GSE/RON/Future Hardstand Area Completed
10/31/23	Started	Concourse B West - Started Sequence 1 of Airline Gate Relocations
11/01/23	Complete	Terminal Level 1 - Opened Expanded Baggage Check-in Counter
11/01/23	Started	Concourse B East (Phase 3 and Phase 4) - Start Full Capture of Construction Sites
11/01/23	Started	Concourse B East (Phase 3) - Started Glazing South Elevation
11/16/23	11/16/23	Concourse B East (Phase 3) - Hydrant Fuel Flush 20" Main Line
11/17/23	11/17/23	Concourse B East (Phase 3) - Complete Level 2 Area H Ceiling Grid
11/27/23	11/27/23	Concourse B East (Phase 3) - Complete Area G South Side Curtainwall
11/27/23	11/27/23	Concourse B East (Phase 3) - Energize Switchgear for Permanent Power

Airport Redevelopment Program Overall Budget



	Budget 08/24/23 FOC	Committed Sep-23	Commitments Oct-23	Revised Commitments	Earned to Date	Estimate at Completion
Closed TRP CGMPs 1, 2, 2A-2D, 3-7, 9, 09A, 12	\$1,933,090,276	\$1,933,090,276	\$0	\$1,933,090,276	\$1,933,090,276	\$1,933,090,276
Closed NCP CGMPs 13, 14, 15, 16, 17, 18 & 19	\$487,852,444	\$487,852,444	\$0	\$487,852,444	\$487,852,444	\$487,852,444
CGMP 2E & F CMAR General Conditions/Services	\$99,720,169	\$99,720,169	\$0	\$99,720,169	\$59,401,679	\$99,720,169
CGMP 2G CMAR Preconstruction Phase 4	\$46,780,829	\$46,780,828	\$0	\$46,780,828	\$4,177,000	\$46,780,829
CGMP 10 South Concourse East/Tunnel Shell	\$567,787,263	\$562,969,284	\$0	\$562,969,284	\$527,570,858	\$567,787,263
CGMP 11, 11A & 11B Apron Paving & Fueling	\$288,621,400	\$288,621,400	\$0	\$288,621,400	\$196,062,976	\$288,621,400
CGMP 19A Phase 3 NCP/Tunnel Buildout	\$370,537,208	\$366,822,245	\$0	\$366,822,245	\$219,574,534	\$370,537,208
CGMP 20 NCP Phase 2 Airfield Paving & Jet Fuel	\$78,108,685	\$77,645,774	\$0	\$77,645,774	\$16,362,065	\$78,108,685
CGMP 22 & 22F Phase 4 Concourse	\$476,403,380	\$476,403,380	\$0	\$476,403,380	\$30,631,021	\$476,403,380
CGMP 24 Phase 4 Airfield	\$62,627,532	\$62,627,532	\$0	\$62,627,532	\$8,394,123	\$62,627,532
Total Program Construction	\$4,411,529,186	\$4,402,533,332	\$0	\$4,402,533,332	\$3,483,116,976	\$4,411,529,186
TRP Owner Procurement	\$6,184,169	\$6,184,169	\$0	\$6,184,169	\$5,520,063	\$6,184,169
NCP Owner Procurement	\$3,039,266	\$3,039,266	\$0	\$3,039,266	\$1,860,182	\$3,039,266
Security Checkpoint Equipment	\$12,751,472	\$11,751,472	\$0	\$11,751,472	\$7,848,061	\$12,751,472
Automated Security Exit Door Equipment	\$917,430	\$914,453	\$0	\$914,453	\$914,453	\$917,430
TRP Soft Cost	\$385,309,918	\$353,009,118	\$36,697	\$353,045,815	\$332,398,656	\$385,309,918
NCP Soft Cost Phases 1&3	\$185,593,794	\$149,773,830	\$198,255	\$149,972,085	\$129,048,179	\$185,593,794
NCP Soft Cost Phase 4	\$67,295,769	\$29,070,085	\$188,444	\$29,258,529	\$22,158,191	\$67,295,769
Total Program Soft Cost	\$661,091,818	\$553,742,393	\$423,396	\$554,165,789	\$499,747,785	\$661,091,818
TRP Owner Reserve	\$7,827,197	\$0	\$0	\$0	\$0	\$7,827,197
NCP Owner Reserve	\$54,524,861	\$0	\$0	\$0	\$0	\$54,524,861
Total Program Owner Reserve	\$62,352,058	\$0	\$0	\$0	\$0	\$62,352,058
Total ARP Program Budget	\$5,134,973,062	\$4,956,275,725	\$423,396	\$4,956,699,121	\$3,982,864,761	\$5,134,973,062

Concourse 'A' East/ Central Tunnel/Airfield



Central Tunnel

- **Drywall Installation Underway At North End Area G Basement**
- **Passenger Cell Moving Walk Trim Installation Completed**
- **Passenger Cell Node Wavy Wall Installation Progressing**
- **High Speed Baggage Conveyor Control Wiring Progressing**

Concourse 'A' East

- **Received Permanent Certificate of Occupancy**
- **Concession Build-outs Completed and Balance of Concessions Opened**
- **BHS Early Bag Storage Conveyor Installation Progressing – Testing Underway**

Airfield

- **Airfield Paving at Terminal Eyebrow Completed**
- **South RON, GSE, Hardstand Area Phase 1 Completed**
- **Airfield Paving South Side of NCP Phase 3 Progressing**



Concourse 'B' East - 8 Gates (Phase 3)



Concourse 'B' East 8 Gates (Phase 3)

- **Area G Level 1 Exterior Masonry Progressing**
- **Area G Mechanical, Electrical, Plumbing and Special Systems Rough-in Underway in Canyon High Ceiling**
- **Area G High Ceiling Underway**
- **BHS Level 1 Installation Progressing**
- **Phase 1 BHS Reinstallation and Final Completion Underway**
- **Terrazzo Installation in 8-Gate Circulation Area Progressing**
- **Restroom Wall Tile Installation Progressing**
- **Ceiling Grid Progressing in 8-Gate Area**

Concourse 'B' East – 16 Gates (Phase 4)



Concourse 'B' East 16 Gates (Phase 4)

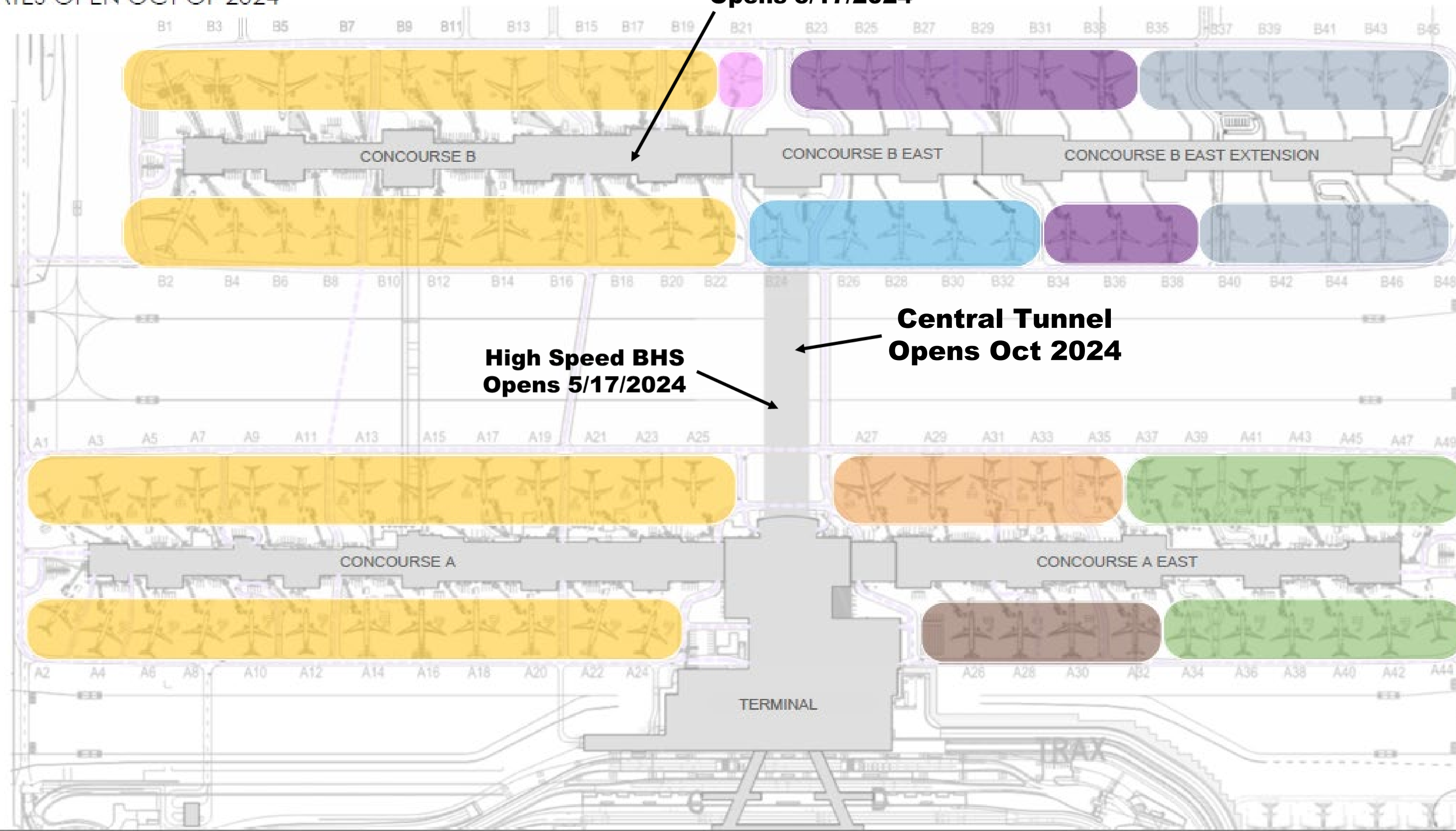
- Stone Column (Ground Improvement) Underway**
- Driven Pile Underway**



Overall Phase 2, Phase 3 and Phase 4 Phased Delivery



- 46 CURRENT GATES OPEN
- 05 GATES OPEN MAY OF 2023
- 04 GATES OPEN AUG OF 2023
- 13 GATES OPEN OCT OF 2023
- 05 GATES OPEN OCT OF 2024
- 09 GATES OPEN OCT OF 2025
(4) Gates – Phase 3 and (5) Gates – Phase 4
- 11 GATES OPEN OCT OF 2026
- 01 GATES OPEN OCT OF 2027



Baggage Handling System Update - EBS & Concourse B



SCE Transfer Line & EBS Update:

- SCE Transfer Line Load Testing Complete and Line is Operational
- On Schedule for June 2024 EBS load testing
- EBS 'Go Live' date August 2024

Concourse B:

- On Schedule for March 2024 Load Testing
- On Schedule to start migrating Airline Carriers to Concourse B May 2024

Baggage Handling System – TSA Future Capacity Discussions



- Conducted an On-line Meeting with Joe Kuchta TSA Regional Deployment Coordinator and one of the TSA's Technical Reviewers to discuss SLCDA's status on addressing CBIS Performance Improvements and planning for SLCIA's Future Growth
- Received very favorable comments on the Recommended Plan to address the TSA Onsite Visit Comments and the Post CBIS Design Recommendations which then lead into the introduction of the A-Nub CBIS Concept
- TSA advised should SLCDA elect to further pursue this A-Nub CBIS Concept, initiation of a Pre-Design Phase/Schematic Design Submittal will afford TSA the means of Formally Commenting
- The TSA Planning Guidelines and Design Standards (PGDS) outlines this Process and the Current Study efforts have generated many of these Deliverables
- A letter has been issued instructing HOK/Introba to formally complete and package the Pre-Design Phase/Schematic Design Phase TSA Submittal for review by SLCDA
- Once TSA and SLCDA formally agree to move forward, an implementation schedule will be generated

Concourse A East – First Flight Gate 49



Concourse A East – 13-Gate Opening Day



Terminal Level 1 Check-in/Bag Drop Opening



Concourse A East – Level 2



Looking East



East Hammerhead Holdroom



Ready for Opening

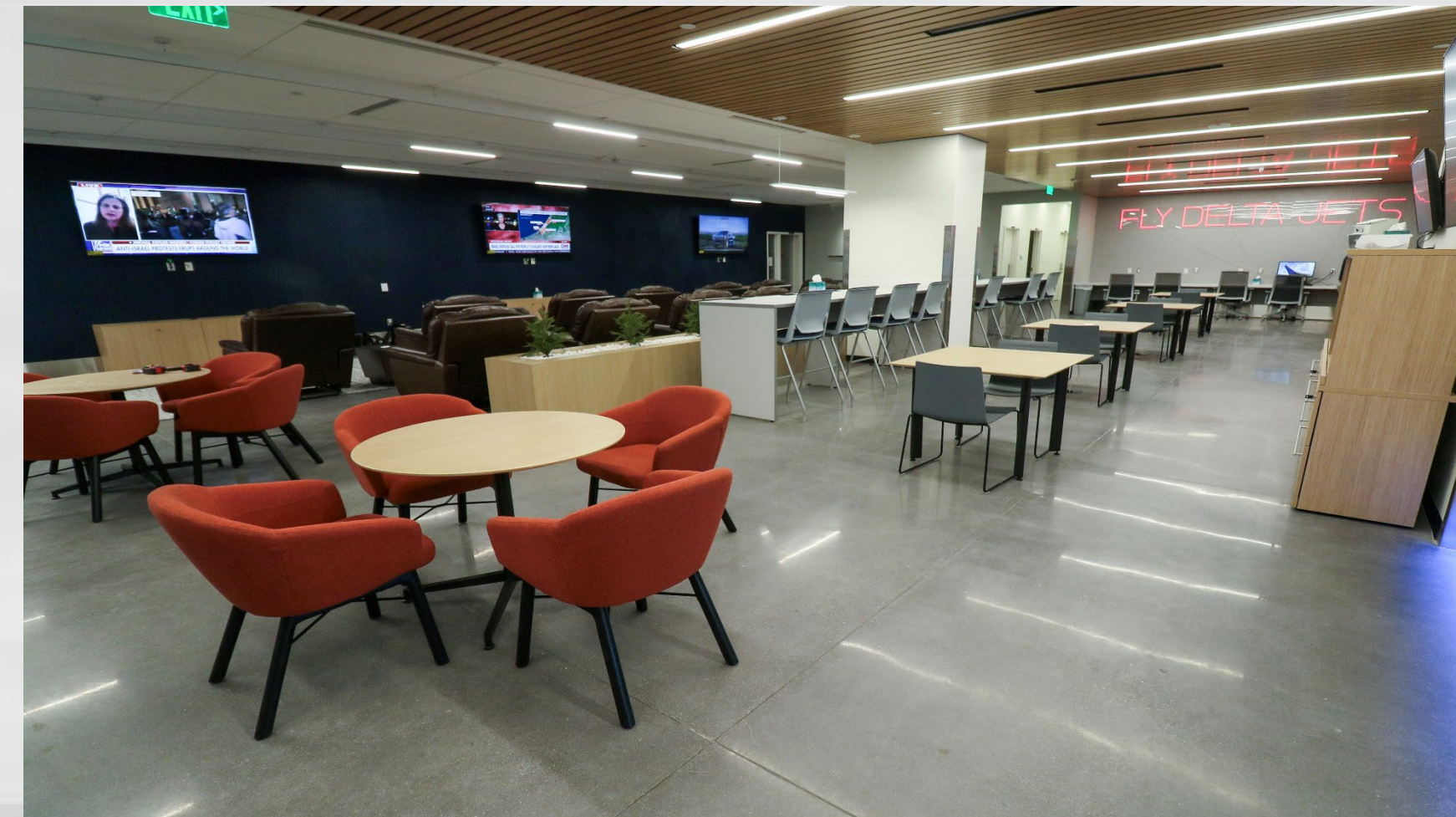


Looking West

Concourse A East – Level 1



Delta Pilots Lounge



Delta Pilots Lounge



Delta Line Maintenance



Delta Health Central

Baggage Handling System



Early Bag Storage



Early Bag Storage



High Speed Conveyor

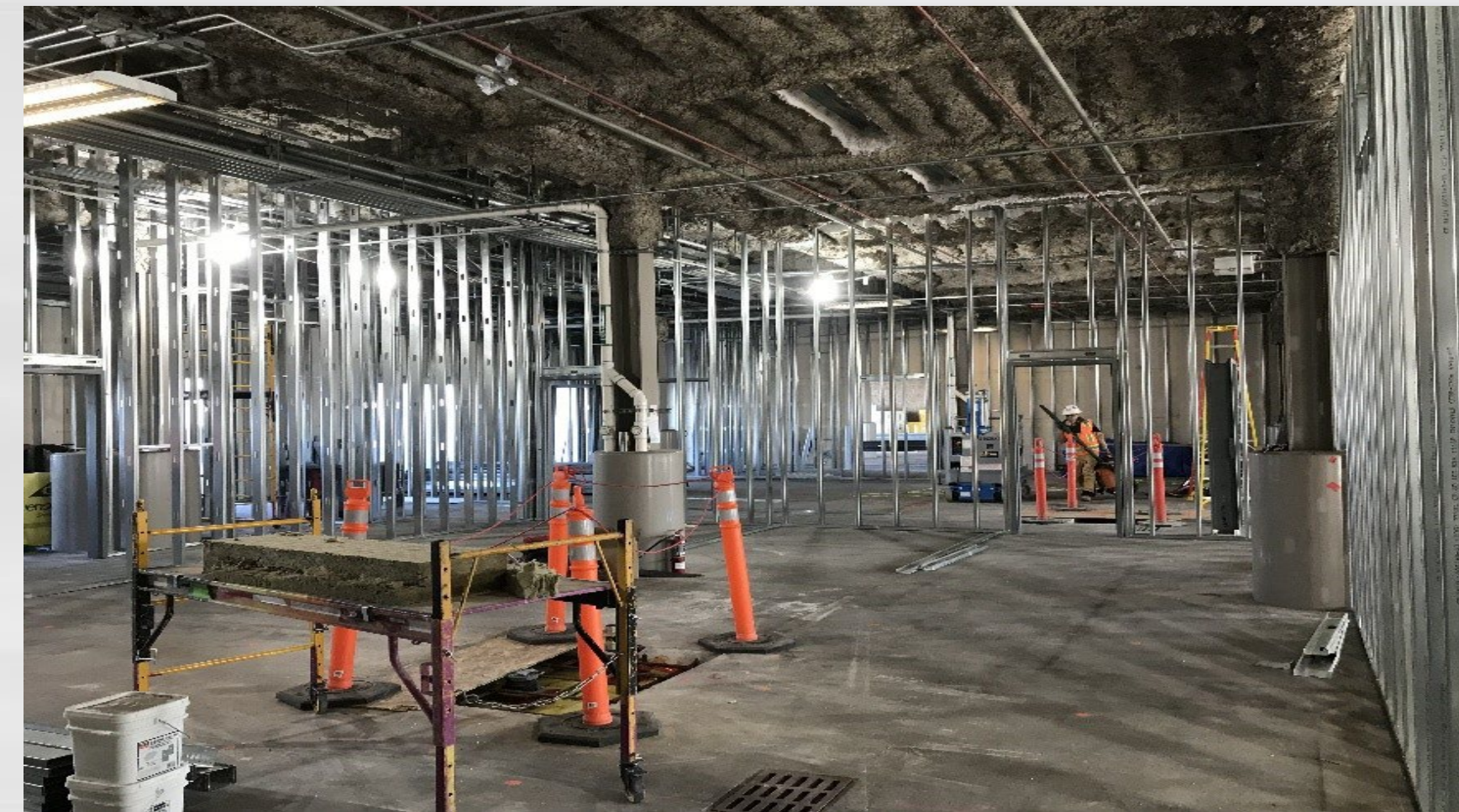


Concourse A East Transfer Input

Concourse B West - Covered and Unenclosed Build-Out



Ramp Level Operations Space



Interior Stud Framing

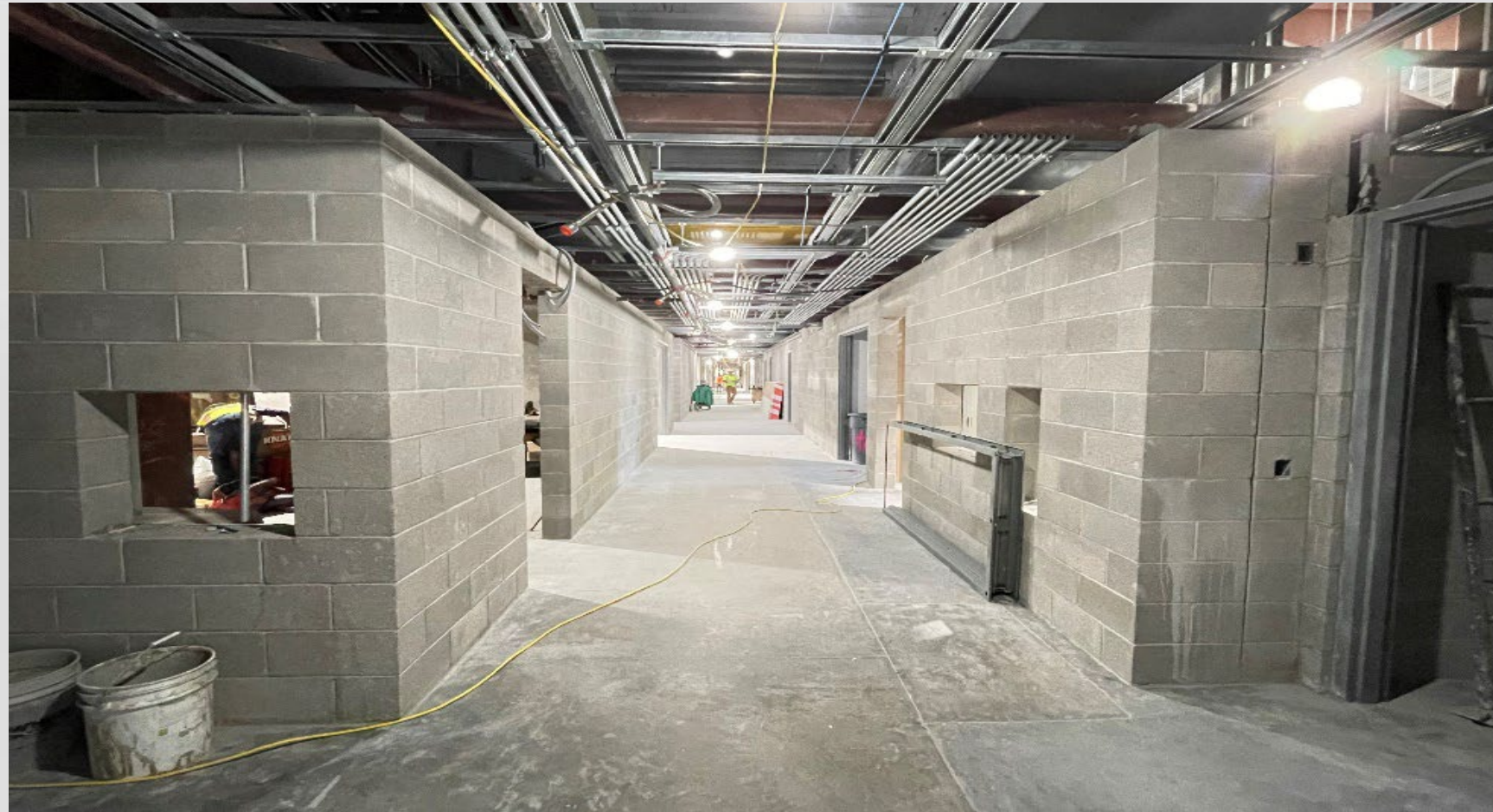


Exterior Enclosure



Exterior Enclosure

Concourse B East (Phase 3)



Level 1 Masonry Walls



Canyon High Ceiling Finishes and Grid



South Elevation Glazing



Central Node Level 2

Concourse B Phase 4 – Stone Columns and Driven Pile



AGENDA: DISCUSSION ITEM (C)
DATE: 15 November 2023
TO: Airport Advisory Board
FROM: Bill Wyatt, Executive Director
SUBJECT: Revenue Diversion

TJ Roskelley, Anderson & Kreiger LLP will present on Revenue Diversion (presentation on file).

Federal Rules on the Use of Airport Revenue

TRAINING FOR SALT LAKE CITY

November 15, 2023

T.J. Roskelley

Today's Goals

- Understand how federal regulation limits the use of revenue generated at SLC
- Discuss the policies behind the restrictions
- Review the FAA's enforcement powers and obligations
- Understand the consequences of illegal airport revenue diversion, including financial impacts on SLC and the City's general fund"

Statutory Restrictions on the Use of Airport Revenue

- 49 U.S.C. § 47107(b)(1) and Grant Assurance 25
- Airport sponsors can only use airport revenue for the capital and operating costs of:
 - the airport
 - the local airport system
 - other facilities which are owned or operated by the airport owner and are directly and substantially related to the air transportation of passengers or property
- No statutory definition of “airport revenue” or allowable “capital and operating costs”

Statutory Obligation to be Financially Self-Sustaining

- 49 U.S.C. § 47107(a)(13) and Grant Assurance 24
- Airport sponsors must maintain a fee and rental structure for the facilities and services at the airport that will make the airport as self-sustaining as possible under existing local circumstances
- No statutory definition of “self-sustaining”

1994 Legislation

- Widespread allegations of airport “revenue diversion” at LAX and elsewhere
- 1994 FAA Authorization Act
 - directs USDOT to promulgate policies and procedures for enforcement of airport revenue-use rules
 - calls out specific types of unlawful revenue diversion
 - enhances USDOT enforcement power / sanctions
 - requires annual reports to FAA of airport payments to local government (Form 5100-127)

1996 Legislation

- 1996 FAA Reauthorization Act
 - inserts 49 U.S.C. § 47133
 - statutory v. contractual obligation
 - perpetual revenue-use assurance
 - further enhances USDOT enforcement power / sanctions
- Neither statute defines “airport revenue”

FAA Revenue Use Policy

- Promulgated in 1996 / 64 Fed. Reg. 7696
 - Defines “airport revenue”
 - Details “permitted” uses
 - Specifies “prohibited” uses
 - Defines and merges “self-sustaining” obligation
 - Outlines sanctions
- Never revised (except with respect to aviation fuel taxes)
- Remains definitive statement of applicable rules
- FAA Compliance Manual / Order 5190.6B

What is Airport Revenue?

Basically Everything

- Section II.B of the Policy / 64 Fed. Reg. 7716
- Very broad definition / essentially all \$ produced at airport
- Not limited to what the City collects from the airlines
- Includes all revenue from:
 - landing fees, terminal rentals, fuel flowage fees
 - FBO leases / cargo facility leases / hangar rentals
 - parking
 - rental cars
 - retail / food and beverage
 - airport hotels
 - sale or disposal of airport property
 - post-1987 aviation fuel taxes

Permitted Uses

- Section V of the Policy / 64 Fed. Reg. 7718-20
 - Airport capital and operating expenses
 - Reimbursements for the costs of services rendered by sponsor
 - Promotion of competition at the airport
 - Limited support of community activities directly related to airport
 - Some costs of airport ground access projects

Cost Allocations

- Indirect costs of sponsor services
 - allocated under cost allocation plans / consistency with OMB policies
 - cannot be disproportionate in relation to benefits actually received by the airport
 - similar treatment of comparable units of government
- “Special scrutiny” of central service costs allocated under CAP “may be warranted”

Standards of Documentation

- Reimbursements of direct and indirect costs
 - underlying accounting detail (ledgers, journals)
 - corroborating evidence (invoices, timeslips)
 - audited financial statements
- Actual costs, not budget estimates

Prohibited Uses

- Section VI of the Policy / 64 Fed. Reg. 7720
 - Payments for services > costs
 - Improper cost allocations
 - General economic development
 - “Destination marketing”
 - Airline subsidies (v. waivers)
 - Non-aeronautical use of land by sponsor < FMV

Sanctions/Administrative Enforcement

- Section IX of the Policy / 64 Fed. Reg. 7722-23
 - Details how revenue-use rules will be enforced by USDOT
 - Outlines possible sanctions
 - FAA and USDOT OIG audits
 - Uncorrected revenue diversion can have serious financial consequences on airport
 - Civil penalties

Sanctions/Administrative Enforcement

- City = “sponsor”
- General Fund obligation to make Airport Fund whole
 - FAA can go back 6 years
 - Statutory interest required
- No private right of action, but:
 - RICO / Rectrix (individual defendants)
 - False Claims Act (treble damages)

Sources of Complaints/Enforcement

- Airport users/Airlines (Parts 13 and 16)
- FAA
 - Compliance audits
 - Hotline complaints
 - Reviews of annual financial reports (e.g. Form 126)
- Office of Inspector General (OIG)
- Whistleblowers

Examples of Audits & Enforcement Activity

- SLC Compliance Audit (2012)
 - Fair market value issues (leases and easement)
 - Wingpointe
 - General Fund obligation: \$1M
- LAX / LAPD (2012)
 - payments for off-airport activity
 - General Fund obligation: \$4.7M
 - Triggered full OIG investigation
- LAX / LA Inc. (2007)
 - “destination marketing”
 - General Fund obligation: \$15M



Advisory Board Meeting

November 15, 2023

Media Clippings

<https://slcairport.com/assets/pdfDocuments/AABoard/Nov2023ClippingPacket.pdf>

Compiled by the Communication & Marketing Dept.



Advisory Board
Meeting

November 15, 2023

Information



**SALT LAKE CITY INTERNATIONAL AIRPORT
AIR TRAFFIC STATISTICS AND ACTIVITY REPORT
NINE MONTHS ENDED SEPTEMBER 2023**

	September 2023	CHANGE	Year to date 2023	CHANGE	12 MO ROLLING Ending 09/2023	CHANGE
PASSENGERS						
<i>DOMESTIC</i>						
Enplaned - Local	761,370	7.16%	6,838,697	6.34%	8,928,642	6.56%
Enplaned - Connections	347,307	-11.33%	3,256,899	-1.44%	4,302,415	-3.46%
Less International Enplaned	-51,530 1,057,147	 0.67%	-499,661 9,595,935	 3.29%	-645,227 12,585,830	 2.34%
Deplaned - Local	772,066	5.10%	6,936,079	8.97%	9,102,998	9.29%
Deplaned - Connection	347,307	-11.33%	3,256,899	-1.44%	4,302,415	-3.46%
Less International Deplaned	-49,817 1,069,556	 0.21%	-514,243 9,678,735	 5.12%	-655,695 12,749,718	 4.21%
TOTAL DOMESTIC	2,126,703	0.44%	19,274,670	4.20%	25,335,548	3.27%
<i>INTERNATIONAL</i>						
Enplaned	51,530	-1.04%	499,661	12.38%	645,227	20.18%
Deplaned	49,817	-15.40%	514,243	11.31%	655,695	19.01%
TOTAL INTERNATIONAL	101,347	-8.66%	1,013,904	11.83%	1,300,922	19.59%
TOTAL PASSENGERS	2,228,050	-0.02%	20,288,574	4.55%	26,636,470	3.96%
LANDED WEIGHT						
Air Carriers	1,238,931,698	2.83%	11,104,036,309	3.89%	14,578,681,383	1.80%
Cargo Carriers	74,587,124	-24.35%	764,306,129	-17.47%	1,103,938,473	-15.71%
TOTAL LANDED WEIGHT (LBS)	1,313,518,822	0.77%	11,868,342,438	2.18%	15,682,619,856	0.33%
MAIL						
Enplaned	833,455	-69.78%	13,556,795	-43.10%	20,438,590	-35.80%
Deplaned	346,947	-79.29%	8,772,530	-34.56%	13,497,051	-24.60%
TOTAL MAIL (LBS)	1,180,402	-73.38%	22,329,325	-40.02%	33,935,641	-31.77%
CARGO						
Enplaned	13,461,037	-10.71%	119,646,384	-14.25%	169,851,988	-12.34%
Deplaned	13,659,185	-19.06%	122,229,408	-17.56%	175,171,821	-14.67%
TOTAL CARGO (LBS)	27,120,222	-15.12%	241,875,792	-15.96%	345,023,809	-13.54%
MAIL & CARGO						
Enplaned	6,731	-10.71%	59,823	-14.26%	84,926	-12.34%
Deplaned	6,830	-19.06%	61,115	-17.56%	87,586	-14.67%
TOTAL MAIL & CARGO (TONS)	13,561	-15.12%	120,938	-15.96%	172,512	-13.54%
AIRCRAFT OPERATIONS						
Passenger Aircraft	19,420	-1.44%	175,952	-0.37%	231,804	-2.35%
All-Cargo Aircraft	1,248	-12.85%	11,886	-15.44%	16,516	-16.17%
General Aviation	5,325	-4.38%	48,182	-6.23%	64,633	-5.98%
Military	308	-1.91%	3,770	48.54%	4,275	35.63%
TOTAL AIRCRAFT OPERATIONS	26,301	-2.66%	239,790	-1.96%	317,228	-3.57%

**SALT LAKE CITY INTERNATIONAL AIRPORT
PASSENGER TRAFFIC REPORT
NINE MONTHS ENDED SEPTEMBER 2023**

	September 2022	September 2023	% CHANGE	Year to date 2022	Year to date 2023	% CHANGE	12 MO ROLLING Ending 09/2023	% CHANGE
ENPLANED PASSENGERS								
AEROMEXICO	2,326	-	-100.0%	22,864	19,215	-16.0%	27,593	-3.4%
AIR CANADA	1,364	1,471	7.8%	4,842	6,987	44.3%	9,714	100.6%
ALASKA	14,414	15,776	9.4%	98,710	128,002	29.7%	168,005	26.8%
Horizon Air / Alaska	-	-	0.0%	8,609	146	-98.3%	146	-99.0%
Skywest / Alaska	11,923	8,616	-27.7%	119,549	89,772	-24.9%	111,578	-26.2%
AMERICAN	42,642	46,888	10.0%	397,159	452,867	14.0%	600,356	11.2%
Envoy Air	-	-	0.0%	4,990	3,092	-38.0%	3,092	-75.1%
American/Mesa Air	304	-	-100.0%	12,559	6,460	-48.6%	7,508	-41.3%
Republic	-	-	0.0%	-	-	0.0%	-	-100.0%
SkyWest (American)	5,240	3,809	-27.3%	39,190	37,169	-5.2%	41,416	-35.0%
DELTA	642,491	638,184	-0.7%	5,685,974	5,942,211	4.5%	7,796,129	4.2%
SkyWest (Delta Connection)	152,064	134,908	-11.3%	1,385,167	1,165,908	-15.8%	1,585,144	-16.2%
EUROWINGS DISCOVER	1,844	1,919	4.1%	10,094	7,700	-23.7%	8,260	-18.2%
FRONTIER	16,066	28,592	78.0%	142,125	186,652	31.3%	243,237	27.3%
JETBLUE	25,469	24,602	-3.4%	217,842	240,152	10.2%	306,147	14.1%
KLM ROYAL DUTCH AIRLINES	4,721	4,638	-1.8%	27,029	27,223	0.7%	30,138	11.5%
SOUTHWEST	114,073	121,980	6.9%	1,025,386	1,095,447	6.8%	1,422,565	6.5%
SPIRIT	18,443	18,891	2.4%	76,175	166,366	118.4%	213,662	180.5%
UNITED	18,904	42,314	123.8%	201,862	329,712	63.3%	386,809	57.1%
Mesa Airlines (United Express)	3,099	70	-97.7%	15,244	1,902	-87.5%	4,052	-77.2%
Republic Airways (United)	-	-	0.0%	345	-	-100.0%	-	-100.0%
SkyWest (United Express)	26,212	15,850	-39.5%	238,094	186,119	-21.8%	261,759	-18.5%
Charters	554	169	-69.5%	1,501	2,494	66.2%	3,747	142.1%
West Coast Charters	-	0	0.0%	-	0	0.0%	0	0.0%
TOTAL ENPLANED PASSENGERS	1,102,153	1,108,677	0.6%	9,735,310	10,095,596	3.7%	13,231,057	3.1%
AeroMexico	2,923	-	-100.0%	32,481	30,405	-6.4%	39,674	1.4%
AIR CANADA	1,175	1,641	39.7%	4,855	6,694	37.9%	9,648	98.7%
ALASKA AIR	15,919	16,068	0.9%	99,964	122,860	22.9%	164,251	22.4%
Horizon Air / Alaska	-	-	0.0%	8,519	136	-98.4%	136	-99.1%
Skywest / Alaska	11,780	8,807	-25.2%	116,781	86,431	-26.0%	108,225	-27.3%
AMERICAN	42,175	46,083	9.3%	391,439	453,006	15.7%	600,478	12.5%
Envoy Air (American)	-	-	0.0%	5,744	3,320	-42.2%	3,320	-74.2%
Mesa Air	295	-	-100.0%	13,112	6,403	-51.2%	7,445	-44.2%
Republic	-	-	0.0%	-	-	0.0%	-	-100.0%
SkyWest (American)	5,127	3,896	-24.0%	39,086	36,517	-6.6%	40,630	-36.1%
DELTA	659,766	650,281	-1.4%	5,611,125	6,029,665	7.5%	7,954,754	7.1%
SkyWest (Delta Connection)	160,047	136,330	-14.8%	1,395,817	1,174,597	-15.8%	1,599,375	-15.9%
EUROWINGS DISCOVER	1,904	1,746	-8.3%	11,290	8,074	-28.5%	8,557	-24.2%
FRONTIER	16,396	29,074	77.3%	142,369	188,175	32.2%	244,177	27.3%
JETBLUE	23,989	23,017	-4.1%	211,997	241,970	14.1%	308,056	17.2%
KLM ROYAL DUTCH AIRLINES	5,107	4,845	-5.1%	32,078	28,648	-10.7%	32,809	2.3%
SOUTHWEST	112,573	120,804	7.3%	1,018,668	1,093,374	7.3%	1,417,197	6.7%
SPIRIT	18,568	18,878	1.7%	77,790	169,260	117.6%	216,394	178.2%
UNITED	18,521	41,940	126.4%	200,086	324,598	62.2%	382,151	55.9%
Mesa Airlines / United Express	3,519	69	-98.0%	16,395	1,998	-87.8%	4,312	-97.7%
Republic Airways (United)	-	-	0.0%	317	-	-100.0%	-	-100.0%
SkyWest (United Express)	25,922	15,888	-38.7%	237,823	184,606	-22.4%	260,063	-19.4%
Charters	536	6	-98.9%	1,841	2,241	21.7%	3,761	99.2%
West Coast Charters	-	0	0.0%	-	0	0.0%	0	0.0%
TOTAL DEPLANED PASSENGERS	1,126,242	1,119,373	-0.6%	9,669,577	10,192,978	5.4%	13,405,413	3.5%
TOTAL PASSENGERS*	2,228,395	2,228,050	0.0%	19,404,887	20,288,574	4.6%	26,636,470	3.3%
INTERNATIONAL - ENPLANED								
AEROMEXICO	2,326	-	-100.0%	22,864	19,215	-16.0%	27,593	-3.4%
AIR CANADA	1,364	1,471	7.8%	4,842	6,987	44.3%	9,714	100.6%
DELTA	41,059	40,069	-2.4%	362,282	411,509	13.6%	541,464	21.8%
SkyWest (Delta Connection)	755	3,433	354.7%	17,398	27,013	55.3%	28,044	29.4%
EUROWINGS DISCOVER	1,844	1,919	4.1%	10,094	7,700	-23.7%	8,260	-18.2%
KLM ROYAL DUTCH AIRLINES	4,721	4,638	-1.8%	27,029	27,223	0.7%	30,138	11.5%
Charters	-	-	0.0%	-	-	0.0%	-	0.0%
TOTAL ENPLANED INTERNATIONAL	52,069	51,530	-1.0%	444,509	499,647	12.4%	645,213	20.2%
AEROMEXICO	2,923	-	-100.0%	32,481	30,405	-6.4%	39,674	1.4%
AIR CANADA	1,175	1,641	39.7%	4,855	6,694	37.9%	9,648	98.7%
DELTA	42,906	38,016	-11.4%	360,614	414,509	14.9%	538,032	22.7%
SkyWest (Delta Connection)	4,826	3,569	-26.0%	20,552	25,909	26.1%	26,971	8.6%
EUROWINGS DISCOVER	1,904	1,746	-8.3%	11,290	8,074	-28.5%	8,557	-24.2%
KLM ROYAL DUTCH AIRLINES	5,107	4,845	-5.1%	32,078	28,648	-10.7%	32,809	2.3%
Charters	42	-	-100.0%	-	-	0.0%	-	0.0%
TOTAL DEPLANED INTERNATIONAL	58,883	49,817	-15.4%	461,870	514,239	11.3%	655,691	19.0%
TOTAL INTERNATIONAL PASSENGERS	110,952	101,347	-8.7%	906,379	1,013,886	11.9%	1,300,904	19.6%

*Includes International

**SALT LAKE CITY INTERNATIONAL AIRPORT
NINE MONTHS ENDED SEPTEMBER 2023
Based on Total Enplanements**

MARKET SHARE

	September 2022	MARKET SHARE	September 2023	MARKET SHARE	Year to date 2022	MARKET SHARE	Year to date 2023	MARKET SHARE	12 MO ROLLING Ending 09/2022	12 MO ROLLING Ending 09/2023	MARKET SHARE
AEROMEXICO	2,326	0.21%	-	0.00%	22,864	0.23%	19,215	0.19%	28,556	27,593	0.21%
ALASKA	26,337	2.39%	24,392	2.20%	226,868	2.33%	217,920	2.16%	298,667	279,729	2.11%
AMERICAN	48,186	4.37%	50,697	4.57%	453,898	4.66%	499,588	4.95%	629,343	652,372	4.93%
DELTA	794,555	72.09%	773,092	69.73%	7,071,141	72.63%	7,108,119	70.41%	9,377,001	9,381,273	70.90%
EUROWINGS DISCOVER	1,844	0.17%	1,919	0.17%	10,094	0.10%	7,700	0.08%	10,094	8,260	0.06%
FRONTIER	16,066	1.46%	28,592	2.58%	142,125	1.46%	186,652	1.85%	191,108	243,237	1.84%
JETBLUE	25,469	2.31%	24,602	2.22%	217,842	2.24%	240,152	2.38%	268,323	306,147	2.31%
KLM ROYAL DUTCH	4,721	0.43%	4,638	0.42%	27,029	0.28%	27,223	0.27%	27,029	30,138	0.23%
SOUTHWEST	114,073	10.35%	121,980	11.00%	1,025,386	10.53%	1,095,447	10.85%	1,336,127	1,422,565	10.75%
SPIRIT	18,443	1.67%	18,891	1.70%	76,175	0.78%	166,366	1.65%	76,175	213,662	1.61%
UNITED	48,215	4.37%	58,234	5.25%	455,545	4.68%	517,733	5.13%	586,520	652,620	4.93%
Charters	554	0.05%	169	0.02%	1,501	0.02%	2,494	0.02%	1,548	3,747	0.03%
TOTAL ENPLANEMENTS	1,102,153	100%	1,108,677	100%	9,735,310	100%	10,095,596	100%	12,835,333	13,231,057	100%

PERCENT CHANGE YOY

	September 2022	September 2023	PERCENT CHANGE	YTD 2022	YTD 2023	PERCENT CHANGE	12 MO ROLLING Ending 09/2022	12 MO ROLLING Ending 09/2023	PERCENT CHANGE
AEROMEXICO	2,326	-	-100.00%	22,864	19,215	-15.96%	28,556	27,593	-3.37%
ALASKA	26,337	24,392	-7.39%	226,868	217,920	-3.94%	298,667	279,729	-6.34%
AMERICAN	48,186	50,697	5.21%	453,898	499,588	10.07%	629,343	652,372	3.66%
DELTA	794,555	773,092	-2.70%	7,071,141	7,108,119	0.52%	9,377,001	9,381,273	0.05%
EUROWINGS DISCOVER	1,844	1,919	4.07%	10,094	7,700	-23.72%	10,094	8,260	-18.17%
FRONTIER	16,066	28,592	77.97%	142,125	186,652	31.33%	191,108	243,237	27.28%
JETBLUE	25,469	24,602	-3.40%	217,842	240,152	10.24%	268,323	306,147	14.10%
KLM ROYAL DUTCH	4,721	4,638	0.00%	27,029	27,223	0.00%	27,029	30,138	11.50%
SOUTHWEST	114,073	121,980	6.93%	1,025,386	1,095,447	6.83%	1,336,127	1,422,565	6.47%
SPIRIT	18,443	18,891	2.43%	76,175	166,366	118.40%	76,175	213,662	180.49%
UNITED	48,215	58,234	20.78%	455,545	517,733	13.65%	586,520	652,620	11.27%
Charters	554	169	-69.49%	1,501	2,494	66.16%	1,548	3,747	142.05%
TOTAL ENPLANEMENTS	1,102,153	1,108,677	0.6%	9,735,310	10,095,596	3.7%	12,835,333	13,231,057	3.1%

**SALT LAKE CITY INTERNATIONAL AIRPORT
LANDING ACTIVITY
NINE MONTHS ENDED SEPTEMBER 2023**

	September 2022	September 2023	CHANGE	Year to date 2022	Year to date 2023	CHANGE	12 MO ROLLING Ending 09/2023	% CHANGE
TOTAL NUMBER OF LANDINGS								
SCHEDULED CARRIERS								
AEROMEXICO	29	-	-100.0%	272	221	-18.8%	312	-6.3%
AIR CANADA	14	13	-7.1%	52	60	15.4%	99	90.4%
ALASKA	124	115	-7.3%	712	864	21.3%	1,180	15.5%
Horizon Air / Alaska	-	-	0.0%	121	2	-98.3%	2	-98.9%
Skywest / Alaska	180	133	-26.1%	1,828	1,269	-30.6%	1,600	-32.3%
AMERICAN	244	285	16.8%	2,364	2,724	15.2%	3,735	12.5%
Mesa Air (American)	4	-	-100.0%	175	71	-59.4%	85	-52.2%
Envoy Air (American)	-	-	0.0%	86	44	-48.8%	44	-77.0%
Republic/ (American)	-	-	0.0%	-	-	0.0%	-	-100.0%
SkyWest (American)	84	63	-25.0%	650	624	-4.0%	692	-35.9%
DELTA	4,374	4,535	3.7%	39,124	41,447	5.9%	54,213	3.9%
SkyWest (Delta Connection)	2,684	2,321	-13.5%	23,945	19,809	-17.3%	26,986	-17.9%
EUROWINGS DISCOVER	13	9	-30.8%	43	36	-16.3%	40	-7.0%
FRONTIER	102	172	68.6%	927	1,115	20.3%	1,457	17.2%
JETBLUE	148	178	20.3%	1,438	1,730	20.3%	2,180	17.5%
KLM ROYAL DUTCH AIRLINES	13	13	0.0%	79	81	2.5%	93	17.7%
SOUTHWEST	909	997	9.7%	7,996	8,889	11.2%	11,515	8.7%
SPIRIT	117	123	5.1%	508	1,082	113.0%	1,390	173.6%
UNITED	136	306	125.0%	1,459	2,357	61.5%	2,768	53.1%
Mesa / United Express	49	1	-98.0%	230	29	-87.4%	62	-76.9%
Republic Airways Holdings	-	-	0.0%	5	-	-100.0%	-	-100.0%
SkyWest (United Express)	395	247	-37.5%	3,720	2,867	-22.9%	4,040	-21.5%
Trans States	-	-	0.0%	-	-	0.0%	-	0.0%
SUBTOTAL SCHEDULED CARRIERS:	9,619	9,511	-1.1%	85,734	85,321	-0.5%	112,493	-2.5%
CHARTER CARRIERS								
ALLEGiant AIR	2	-	-100.0%	-	2	100.0%	12	100.0%
BOMBARDIER BUSINESS JETS	39	-	-100.0%	585	596	1.9%	726	-3.8%
BOUTIQUE AIR	-	-	0.0%	-	-	0.0%	-	0.0%
DELTA PRIVATE JETS	-	-	0.0%	-	-	0.0%	-	0.0%
EXECUTIVE JET MANAGEMENT	-	-	0.0%	-	-	0.0%	-	0.0%
FLIGHT OPTIONS	-	-	0.0%	-	-	0.0%	-	0.0%
KALITTA CHARTERS	-	1	100.0%	18	12	-33.3%	17	-55.3%
KEYLIME AIR	-	-	0.0%	8	-	-100.0%	2	-75.0%
NETJETS	169	186	10.1%	1,670	1,914	14.6%	2,490	14.1%
SUNSET AVIATION	-	-	0.0%	-	-	0.0%	-	0.0%
SWIFT AIR	-	-	0.0%	-	-	0.0%	-	0.0%
SUN COUNTRY	8	7	-12.5%	31	55	77.4%	62	100.0%
XOJET	12	6	-50.0%	251	82	-67.3%	96	-69.6%
OTHER CHARTER	-	-	0.0%	4	5	25.0%	5	-16.7%
SUBTOTAL CHARTER CARRIERS:	230	200	-13.0%	2,567	2,666	3.9%	3,410	2.2%
CARGO CARRIERS								
ABX AIR INC	-	-	0.0%	12	5	-58.3%	7	-58.8%
AIRNET 11 LLC	-	8	100.0%	39	45	15.4%	70	14.8%
ALPINE AVIATION	181	190	5.0%	1,875	1,760	-6.1%	2,333	-9.6%
AMERIFLIGHT	23	22	-4.3%	205	197	-3.9%	261	-8.4%
AMERIJET INTERTIONAL	21	-	-100.0%	125	5	-96.0%	63	-59.1%
CORPORATE AIR (BILLINGS)	125	125	0.0%	1,153	1,124	-2.5%	1,497	-5.0%
EMPIRE	17	16	-5.9%	153	154	0.7%	207	0.0%
FEDERAL EXPRESS	133	125	-6.0%	1,257	1,138	-9.5%	1,578	-9.3%
GEM AIR	43	29	-32.6%	497	245	-50.7%	350	-54.4%
GLOBAL CROSSING AIRLINES	-	2	100.0%	-	111	100.0%	111	100.0%
NORTHERN AIR CARGO	25	18	-28.0%	228	90	-60.5%	161	-45.8%
UPS	124	88	-29.0%	1,240	1,010	-18.5%	1,473	-17.0%
WESTERN AIR EXPRESS	23	-	-100.0%	211	26	-87.7%	103	-69.6%
OTHER CARGO	4	-	-100.0%	31	22	-29.0%	43	19.4%
SUBTOTAL CARGO CARRIERS:	719	623	-13.4%	7,026	5,932	-15.6%	8,257	-16.0%
TOTAL LANDINGS	10,568	10,334	-2.2%	95,327	93,919	-1.5%	124,160	-3.4%
TOTAL LANDED WEIGHT								
SCHEDULED CARRIERS								
AEROMEXICO	2,749,142	-	-100.0%	25,785,056	20,950,358	-18.8%	29,576,976	-6.3%
AIR CANADA	2,136,000	2,002,000	-6.3%	7,980,000	9,240,000	15.8%	15,246,000	91.1%
ALASKA	18,349,882	17,694,200	-3.6%	106,320,752	133,185,300	25.3%	181,368,598	17.9%
Horizon Air / Alaska	-	-	0.0%	9,069,797	149,914	-98.3%	149,914	-98.9%
Skywest / Alaska	13,492,260	9,969,281	-26.1%	137,021,396	95,120,433	-30.6%	119,931,200	-32.3%
AMERICAN	40,921,776	46,362,600	13.3%	381,714,170	444,276,814	16.4%	597,117,178	11.8%
Envoy Air (American)	-	-	0.0%	6,440,420	3,297,800	-48.8%	3,297,800	-76.9%
American/Mesa Air	298,800	-	-100.0%	13,020,900	5,304,900	-59.3%	6,348,300	-52.1%
Republic (American)	-	-	0.0%	-	-	0.0%	-	-100.0%
SkyWest (American)	5,628,000	4,459,500	-20.8%	44,030,850	43,334,400	-1.6%	47,890,400	-34.8%
DELTA	694,102,467	706,188,661	1.7%	6,188,633,727	6,471,527,754	4.6%	8,500,801,699	2.4%
SkyWest (Delta Connection)	183,269,442	167,469,898	-8.6%	1,645,570,547	1,417,488,702	-13.9%	1,923,341,211	-14.4%
EUROWINGS DISCOVER	5,304,200	3,658,600	-31.0%	17,547,200	14,634,400	-16.6%	16,280,000	-7.2%
FRONTIER	14,504,196	26,015,136	79.4%	136,450,106	162,171,106	18.9%	211,565,142	14.3%
JETBLUE	21,045,600	25,428,876	20.8%	204,483,600	245,470,079	20.0%	309,460,079	17.3%

**SALT LAKE CITY INTERNATIONAL AIRPORT
LANDING ACTIVITY
NINE MONTHS ENDED SEPTEMBER 2023**

	September 2022	September 2023	CHANGE	Year to date 2022	Year to date 2023	CHANGE	12 MO ROLLING Ending 09/2023	% CHANGE
KLM ROYAL DUTCH AIRLINES	5,543,744	5,523,414	-0.4%	33,720,656	34,544,083	2.4%	39,687,607	17.7%
SOUTHWEST	121,912,600	135,718,600	11.3%	1,085,832,000	1,212,063,000	11.6%	1,571,808,500	9.4%
SPIRIT	16,637,166	17,485,945	5.1%	72,236,584	153,840,600	113.0%	197,637,584	173.6%
UNITED	19,506,600	47,122,900	141.6%	211,179,200	345,049,200	63.4%	404,406,400	55.1%
Mesa / United Express	3,675,000	75,000	-98.0%	17,250,000	2,113,020	-87.8%	4,588,020	-77.2%
Republic Airways Holdings	-	-	0.0%	364,200	-	-100.0%	-	-100.0%
SkyWest (United Express)	27,474,680	17,281,475	-37.1%	257,659,167	202,504,292	-21.4%	283,989,493	-19.6%
Trans States	-	-	0.0%	-	-	0.0%	-	0.0%
SUBTOTAL SCHEDULED CARRIERS:	1,196,551,555	1,232,456,086	3.0%	10,602,310,328	11,016,266,155	3.9%	14,464,492,101	1.8%
CHARTER CARRIERS								
ALLEGIAN AIR	291,010	0	-100.0%	291,010	279,986	-3.8%	1,694,247	482.2%
AMERISTAR	-	-	0.0%	107,000	-	-100.0%	-	-100.0%
BOEING COMMERCIAL AIRPLANE	-	-	0.0%	-	-	0.0%	-	-100.0%
BOMBARDIER	1,360,941	-	-100.0%	20,253,966	20,063,045	-0.9%	24,730,144	-6.2%
BOUTIQUE AIR	-	-	0.0%	-	-	0.0%	-	0.0%
DELTA PRIVATE JETS	-	-	0.0%	-	-	0.0%	-	0.0%
EXECUTIVE JET MANAGEMENT	-	-	0.0%	-	-	0.0%	-	0.0%
FLIGHT OPTIONS	-	-	0.0%	-	-	0.0%	-	0.0%
KALITTA CHARTERS	-	15,300	100.0%	425,300	197,720	-53.5%	635,020	-58.4%
KEYLIME AIR	-	-	0.0%	301,500	-	-100.0%	63,448	-79.0%
MIAMI AIR	-	-	0.0%	-	-	0.0%	-	0.0%
NETJETS	4,649,593	5,260,712	13.1%	49,132,192	55,228,723	12.4%	71,727,343	10.4%
SIERRA PACIFIC	-	-	0.0%	110,000	550,000	400.0%	550,000	150.0%
SUN COUNTRY	1,136,200	1,024,100	-9.9%	4,484,000	7,995,200	78.3%	9,019,300	101.1%
SWIFT AIR	-	-	0.0%	-	-	0.0%	-	0.0%
VIRGIN AMERICA	-	-	0.0%	-	-	0.0%	-	0.0%
XOJET	432,700	190,800	-55.9%	9,242,800	3,637,200	-60.6%	4,231,800	-64.1%
OTHER CHARTER	-	-	0.0%	-	-	0.0%	-	0.0%
SUBTOTAL CHARTER CARRIERS:	7,870,444	6,490,912	-17.5%	84,347,768	87,951,874	4.3%	112,651,302	2.2%
CARGO CARRIERS								
ABX AIR INC	-	-	0.0%	3,330,000	1,371,000	-40.9%	1,915,000	-59.4%
AIRNET 11	-	124,500	100.0%	606,500	698,300	15.1%	1,085,000	14.5%
ALPINE AVIATION	2,461,700	2,611,800	6.1%	25,861,100	24,202,000	-6.4%	32,200,100	-9.8%
AMERIFLIGHT	379,994	354,200	-6.8%	3,283,788	3,146,500	-4.2%	4,157,700	-8.1%
AMERIJET INTERNATIONAL	5,712,000	-	-100.0%	34,054,000	1,360,000	-96.0%	17,136,000	-59.1%
AMERISTAR	81,700	-	-100.0%	81,700	463,100	466.8%	1,116,700	173.4%
ATLAS AIR	-	-	0.0%	-	1,260,000	100.0%	1,260,000	286.5%
CORPORATE AIR (BILLINGS)	1,062,500	1,062,500	0.0%	9,800,500	9,554,000	-2.5%	12,724,500	-5.0%
EMPIRE	800,156	753,088	-5.9%	7,190,491	7,188,078	0.0%	9,682,682	-0.5%
FEDEX EXPRESS	46,216,300	41,230,600	-10.8%	429,524,000	377,759,300	-12.1%	526,266,900	-11.7%
GEM AIR	365,500	239,900	-34.4%	4,203,500	2,016,500	-52.0%	2,909,000	-54.7%
GLOBAL CROSSING AIRLINES	-	332,896	100.0%	-	19,862,691	100.0%	19,862,691	100.0%
NORTHERN AIR CARGO	3,025,000	2,178,000	-28.0%	27,588,000	11,490,500	-58.3%	20,057,500	-44.2%
SWIFT AIR	432,000	-	-100.0%	4,320,000	1,826,000	-57.7%	3,698,000	-14.4%
UPS	38,189,920	25,684,340	-32.7%	375,394,020	301,586,440	-19.7%	450,043,680	-18.4%
WESTERN AIR EXPRESS	299,000	-	-100.0%	2,738,480	340,000	-87.6%	1,361,000	-69.4%
OTHER CARGO	-	-	0.0%	-	-	0.0%	-	0.0%
SUBTOTAL CARGO CARRIERS:	99,025,770	74,571,824	-24.7%	927,976,079	764,124,409	-17.7%	1,105,476,453	-15.7%
TOTAL LANDED WEIGHT	1,303,447,769	1,313,518,822	0.8%	11,614,634,175	11,868,342,438	2.2%	15,682,619,856	0.3%

**SALT LAKE CITY INTERNATIONAL AIRPORT
CARGO ACTIVITY REPORT
NINE MONTHS ENDED SEPTEMBER 2023**

	September 2022	September 2023	CHANGE	Year to date 2022	Year to date 2023	CHANGE	12 MO ROLLING Ending 09/2023	% CHANGE
ENPLANED CARGO								
PASSENGER CARRIERS								
ALASKA	8,087	12,615	55.99%	74,338	98,549	32.57%	121,890	34.83%
Horizon Air / Alaska	-	-	0.00%	4,118	-	-100.00%	-	-100.00%
Skywest / Alaska	755	766	1.46%	17,644	19,427	10.11%	22,027	4.19%
AMERICAN	6,969	4,421	-36.56%	64,169	56,549	-11.87%	80,227	-1.45%
American Eagle/Republic	-	-	0.00%	-	-	0.00%	-	0.00%
Envoy Air (American)	-	-	0.00%	-	-	0.00%	-	-100.00%
Mesa	-	-	0.00%	-	251	100.00%	251	100.00%
SkyWest (American)	1,125	1,545	37.33%	5,756	5,582	-3.02%	5,848	-30.64%
DELTA	860,005	670,796	-22.00%	6,431,149	6,495,095	0.99%	8,412,083	3.33%
EW DISCOVER GMBH	-	104,345	-	-	181,535	100.00%	181,535	100.00%
FRONTIER	-	-	0.00%	-	-	0.00%	-	0.00%
KLM ROYAL DUTCH	109,672	113,958	3.91%	787,863	568,363	-27.86%	672,638	-14.63%
SOUTHWEST	453,229	485,846	7.20%	3,232,715	3,899,828	20.64%	5,094,753	20.10%
UNITED	7,949	7,309	-8.05%	65,707	44,642	-32.06%	106,458	7.89%
Others	-	-	0.00%	24,697	-	-100.00%	64,264	-55.05%
CARGO CARRIERS								
FEDEX EXPRESS*	7,938,955	7,409,774	-6.67%	74,410,117	64,083,235	-13.88%	89,697,155	-13.00%
GEM AIR	32,745	15,187	-53.62%	445,948	129,112	-71.05%	194,883	-69.73%
GLOBAL CROSSING	-	26,306	100.00%	-	26,306	100.00%	26,306	100.00%
SWIFT AIR	2,784	-	-100.00%	126,582	16,962	-86.60%	41,209	-67.44%
UPS	4,528,759	3,838,720	-15.24%	44,209,118	36,607,301	-17.20%	54,389,670	-13.89%
MISC CARGO	1,125,218	769,449	-31.62%	9,637,264	7,413,647	-23.07%	10,740,791	-18.01%
TOTAL ENPLANED CARGO (LBS)	15,076,252	13,461,037	-10.71%	139,537,185	119,646,384	-14.25%	169,851,988	-12.34%
DEPLANED CARGO								
PASSENGER CARRIERS								
ALASKA	30,686	38,122	24.23%	149,812	130,639	-12.80%	182,932	-8.56%
Horizon Air / Alaska	-	-	0.00%	5,716	-	-100.00%	-	-100.00%
Skywest / Alaska	2,975	3,626	21.88%	23,076	30,533	32.31%	38,868	17.64%
AMERICAN	38,173	33,589	-12.01%	330,831	269,802	-18.45%	391,941	-8.26%
American Eagle/Republic	-	-	0.00%	-	-	0.00%	-	0.00%
Envoy	-	-	0.00%	9	255	2733.33%	255	-72.93%
Mesa (American)	-	-	0.00%	933	559	-40.09%	559	-40.09%
SkyWest (American)	49	166	238.78%	4,385	2,575	-41.28%	2,844	-63.26%
DELTA	963,186	912,193	-5.29%	9,551,514	8,357,402	-12.50%	11,674,082	-6.10%
SkyWest (Delta Connection)	-	-	0.00%	-	-	0.00%	-	0.00%
Compass (Delta Connection)	-	-	0.00%	-	-	0.00%	-	0.00%
EW DISCOVER GMBH	-	71,754	100.00%	-	131,425	100.00%	131,425	100.00%
KLM ROYAL DUTCH	229,276	118,402	-48.36%	1,319,933	714,299	-45.88%	959,490	-27.31%
SOUTHWEST	332,889	392,094	17.79%	3,245,913	3,145,553	-3.09%	4,167,963	-7.76%
UNITED	23,894	31,603	32.26%	223,285	221,025	-1.01%	283,986	-15.07%
Others	-	-	0.00%	37,076	5,522	-85.11%	64,880	-70.09%
CARGO CARRIERS								
FEDEX EXPRESS*	8,437,413	7,387,976	-12.44%	73,761,132	64,606,470	-12.41%	90,037,801	-11.42%
GEM AIR	2,157	1,266	-41.31%	98,207	10,400	-89.41%	16,335	-89.26%
GLOBAL CROSSING	-	18,597	100.00%	-	18,597	100.00%	18,597	100.00%
SWIFT AIR	81,967	-	-100.00%	766,987	292,240	-61.90%	609,387	-20.55%
UPS	5,669,252	4,307,762	-24.02%	50,421,595	40,833,283	-19.02%	60,004,570	-16.27%
MISC CARGO	1,063,639	342,035	-67.84%	8,329,850	3,458,829	-58.48%	6,585,906	-43.00%
ABX AIR	-	-	0.00%	575,203	195,826	-65.96%	228,453	-73.70%
TOTAL DEPLANED CARGO (LBS)	16,875,556	13,659,185	-19.06%	148,270,254	122,229,408	-17.56%	175,171,821	-14.67%
TOTAL CARGO LBS	31,951,808	27,120,222	-15.12%	287,807,439	241,875,792	-15.96%	345,023,809	-13.54%

*FEDEX EXPRESS includes mail



Salt Lake City
Department of Airports

COMPARISON OF ON TIME OPERATIONS
July 2023

ARRIVALS

Airport	Flights	% On Time	Rank
SLC SALT LAKE CITY INTL	9,646	79.7	1
MSP MINNEAPOLIS-ST. PAUL INTL	11,327	78.6	7
SEA SEATTLE-TACOMA INTL	17,113	78.4	3
ATL HARTSFIELD-JACKSON ATLANTA INTL	29,915	75.3	4
PHX PHOENIX SKY HARBOR INTL	14,184	74.6	5
DTW DETROIT METRO WAYNE CNTY	11,134	74.4	6
LAX LOS ANGELES INTL	17,660	74.0	7
DFW DALLAS-FT. WORTH REGIONAL	26,180	73.2	8
IAH HOUSTON GEORGE BUSH	13,497	72.7	9
SFO SAN FRANCISCO INTL	12,456	72.4	10
CLT CHARLOTTE DOUGLAS	19,774	71.9	11
IAD WASHINGTON DULLES	6,591	71.7	12
AUS AUSTIN	8,100	71.6	13
SAN SAN DIEGO LINDBERGH FIELD	8,180	71.1	14
BNA NASHVILLE INTL	8,389	68.1	15
DCA RONALD REAGAN NATIONAL	11,815	67.6	16
ORD CHICAGO O HARE	26,045	67.4	17
LAS LAS VEGAS MCCARRAN INTL	15,982	67.1	18
BWI BALTIMORE/WASHINGTON INTL	8,470	66.5	19
PHL PHILADELPHIA INTL	9,979	66.3	20
MIA MIAMI INTL	8,618	65.4	21
MDW CHICAGO MIDWAY	7,938	65.3	22
DEN DENVER INTL	26,724	64.9	23
LGA NEW YORK LAGUARDIA	13,636	64.7	24
TPA TAMPA INTL	6,444	62.3	25
FLL FT. LAUDERDALE	7,137	60.7	26
BOS BOSTON LOGAN INTL	12,239	59.8	27
JFK NEW YORK JFK INTL	11,187	58.2	28
EWR NEWARK LIBERTY INTERNATIONAL	12,624	57.3	29
MCO ORLANDO INTL	13,772	55.7	30
AVERAGES	13,559		

DEPARTURES

Airport	Flights	% On Time	Rank
SLC SALT LAKE CITY INTL	9,648	77.6	1
MSP MINNEAPOLIS-ST. PAUL INTL	11,138	77.3	2
SEA SEATTLE-TACOMA INTL	15,666	76.4	3
LAX LOS ANGELES INTL	17,523	75.5	4
SFO SAN FRANCISCO INTL	12,201	74.8	5
SAN SAN DIEGO LINDBERGH FIELD	8,128	74.6	6
AUS AUSTIN	8,059	73.7	7
DTW DETROIT METRO WAYNE CNTY	10,999	72.9	8
PHX PHOENIX SKY HARBOR INTL	14,037	72.4	9
DFW DALLAS-FT. WORTH REGIONAL	26,010	69.0	10
DCA RONALD REAGAN NATIONAL	11,566	68.8	11
ATL HARTSFIELD-JACKSON ATLANTA INTL	29,919	68.5	12
IAH HOUSTON GEORGE BUSH	9,775	68.0	13
IAD WASHINGTON DULLES	4,517	67.3	14
BNA NASHVILLE INTL	8,322	67.2	15
ORD CHICAGO O HARE	22,796	66.4	16
LGA NEW YORK LAGUARDIA	13,377	66.1	17
TPA TAMPA INTERNATIONAL	6,441	66.1	18
PHL PHILADELPHIA INTL	8,309	65.9	19
CLT CHARLOTTE DOUGLAS	16,976	65.2	20
LAS LAS VEGAS MCCARRAN INTL	15,879	63.9	21
BOS BOSTON LOGAN INTERNATIONAL	12,133	63.6	22
MIA MIAMI INTL	8,623	61.5	23
JFK NEW YORK JFK INTL	11,188	60.2	24
DEN DENVER INTERNATIONAL	25,684	58.8	25
FLL FT. LAUDERDALE	7,137	56.1	26
MDW CHICAGO MIDWAY	7,942	54.8	27
BWI BALTIMORE/WASHINGTON INTL	8,471	54.7	28
MCO ORLANDO INTL	13,770	54.2	29
EWR NEWARK LIBERTY INTERNATIONAL	11,646	52.9	30
AVERAGES	12,929		

ON TIME ARRIVAL PERFORMANCE AT SLC

By Carrier

Air Carrier	Flights	% On Time
OO SKYWEST	2,223	94.1%
AS ALASKA	258	83.0%
DL DELTA	4,697	81.0%
UA UNITED	576	70.8%
WN SOUTHWEST	1,015	66.9%
F9 FRONTIER	120	61.7%
NK SPIRIT	143	60.8%
AA AMERICAN	397	60.2%
B6 JETBLUE	217	43.3%
AVERAGES	9,646	84.4%

Source: DOT Air Travel Consumer Report



Salt Lake City
Department of Airports

COMPARISON OF ON TIME OPERATIONS
August 2023

ARRIVALS

Airport	Flights	% On Time	Rank
SLC SALT LAKE CITY INTL	9,622	83.9	1
MSP MINNEAPOLIS-ST. PAUL INTL	11,467	83.7	7
IAD WASHINGTON DULLES	6,877	82.9	3
IAH HOUSTON GEORGE BUSH	13,459	82.5	4
SEA SEATTLE-TACOMA INTL	17,421	82.2	5
EWR NEWARK LIBERTY INTERNATIONAL	12,541	80.4	6
LGA NEW YORK LAGUARDIA	14,288	80.4	7
DFW DALLAS-FT. WORTH REGIONAL	26,547	79.3	8
PHX PHOENIX SKY HARBOR INTL	14,459	79.2	9
DTW DETROIT METRO WAYNE CNTY	11,361	78.9	10
BNA NASHVILLE INTL	8,268	78.7	11
AUS AUSTIN	8,191	77.7	12
DCA RONALD REAGAN NATIONAL	12,173	77.7	13
LAX LOS ANGELES INTL	17,788	77.7	14
SFO SAN FRANCISCO INTL	12,447	77.7	15
ORD CHICAGO O HARE	26,663	77.3	16
ATL HARTSFIELD-JACKSON ATLANTA INTL	29,428	77.1	17
MDW CHICAGO MIDWAY	7,893	76.0	18
BWI BALTIMORE/WASHINGTON INTL	8,509	75.9	19
PHL PHILADELPHIA INTL	10,039	75.8	20
CLT CHARLOTTE DOUGLAS	20,143	75.6	21
DEN DENVER INTL	27,238	75.4	22
JFK NEW YORK JFK INTL	11,130	74.9	23
SAN SAN DIEGO LINDBERGH FIELD	8,162	73.6	24
MIA MIAMI INTL	8,509	71.8	25
LAS LAS VEGAS MCCARRAN INTL	16,049	71.5	26
BOS BOSTON LOGAN INTL	12,498	70.1	27
MCO ORLANDO INTL	13,356	68.5	28
TPA TAMPA INTL	6,160	68.5	29
FLL FT. LAUDERDALE	7,026	67.6	30
AVERAGES	13,657		

DEPARTURES

Airport	Flights	% On Time	Rank
SLC SALT LAKE CITY INTL	9,621	82.6	1
MSP MINNEAPOLIS-ST. PAUL INTL	11,271	81.9	2
SEA SEATTLE-TACOMA INTL	15,974	80.7	3
IAD WASHINGTON DULLES	4,853	80.3	4
BNA NASHVILLE INTL	8,203	79.4	5
SFO SAN FRANCISCO INTL	12,185	79.4	6
LGA NEW YORK LAGUARDIA	14,074	79.3	7
IAH HOUSTON GEORGE BUSH	9,786	79.0	8
DCA RONALD REAGAN NATIONAL	11,912	78.9	9
AUS AUSTIN	8,137	78.8	10
LAX LOS ANGELES INTL	17,683	78.6	11
PHX PHOENIX SKY HARBOR INTL	14,304	77.7	12
DTW DETROIT METRO WAYNE CNTY	11,211	77.2	13
EWR NEWARK LIBERTY INTERNATIONAL	11,561	77.2	14
ORD CHICAGO O HARE	23,347	77.1	15
SAN SAN DIEGO LINDBERGH FIELD	8,058	76.3	16
PHL PHILADELPHIA INTL	8,378	75.6	17
JFK NEW YORK JFK INTL	11,130	74.2	18
BOS BOSTON LOGAN INTERNATIONAL	12,389	72.8	19
DFW DALLAS-FT. WORTH REGIONAL	26,370	72.8	20
ATL HARTSFIELD-JACKSON ATLANTA INTL	29,431	72.7	21
DEN DENVER INTERNATIONAL	26,308	70.8	22
TPA TAMPA INTERNATIONAL	6,159	70.6	23
LAS LAS VEGAS MCCARRAN INTL	15,939	70.2	24
CLT CHARLOTTE DOUGLAS	17,319	69.9	25
MIA MIAMI INTL	8,505	69.2	26
MDW CHICAGO MIDWAY	7,890	68.9	27
MCO ORLANDO INTL	13,360	66.4	28
BWI BALTIMORE/WASHINGTON INTL	8,507	64.0	29
FLL FT. LAUDERDALE	7,024	60.4	30
AVERAGES	13,030		

ON TIME ARRIVAL PERFORMANCE AT SLC

By Carrier

Air Carrier	Flights	% On Time
OO SKYWEST	2,177	93.6%
DL DELTA	4,710	85.3%
AS ALASKA	253	79.1%
UA UNITED	589	78.9%
WN SOUTHWEST	1,036	76.5%
NK SPIRIT	138	65.2%
AA AMERICAN	383	64.8%
F9 FRONTIER	119	64.7%
B6 JETBLUE	217	64.5%
	9,622	84.4%

Source: DOT Air Travel Consumer Report

CONSTRUCTION REPORT

TABLE OF CONTENTS

- I. Area Map of Project Locations
- II. Project Schedule
- III. Construction Analysis
- IV. Construction Report

SALT LAKE CITY DEPARTMENT OF AIRPORTS
November 7, 2023



2023 - 2024 Project Legend

Airfield

1. North Cargo Apron Site Development
2. Pump House #5 Renovations
3. Taxiway E Reconstruction F1-F2
4. Gylcol E. and Intermediate E. Pumpstation Rehabilitation
5. Pumpstation #9 Renovations
6. Electrical Vehicle Charging Stations (FY23)
7. Equipment Storage Bldg.

Landside

8. Gateway Building Restroom Renovations
9. Electrical & Communication Duct Bank AOC to Gate 7
10. Gateway Sustainability Display
11. Replace PVC Roof - NS1
12. Replace PVC Roof - NS14
13. Toilet Carriers Upgrades

SALT LAKE CITY INTERNATIONAL AIRPORT
CONSTRUCTION PROGRAM
2023/2024 Construction Schedule

ID	Task Name	Start	Finish	Aug '23	Sep '23	Oct '23	Nov '23	Dec '23	Jan '24	Feb '24	Mar '24
1	Project Title	Mon 8/23/21	Fri 3/14/25								
2	(1) North Cargo Apron Site Development	Mon 8/23/21	Fri 9/29/23								
3	(2) Pump House No. 5 Renovations	Wed 3/1/23	Fri 2/23/24								
4	(3) Taxiway E Reconstruction F1-F2	Sat 7/1/23	Wed 10/18/23								
5	(4) Glycol E. & Intermediate E. Pumpstation Rehabilitation	Mon 8/21/23	Tue 4/30/24								
6	(5) Pump Station #9 Renovations	Tue 8/8/23	Fri 3/14/25								
7	(6) Electrical Vehicle Charging Stations (FY23)	Mon 9/25/23	Wed 11/27/24								
8	(7) Equipment Storage Building	Mon 9/25/23	Mon 3/10/25								
9	(8) Gateway Building Restroom Renovations	Tue 3/22/22	Fri 11/17/23								
10	(9) Electrical & Communication Duct Bank from AOC to Gate 7	Mon 5/1/23	Sat 11/25/23								
11	(10) Gateway Sustainability Display	Fri 1/13/23	Tue 11/21/23								
12	(11) Replace PVC Roof - NS1	Mon 7/31/23	Wed 4/24/24								
13	(12) Replace PVC Roof - NS14	Mon 7/31/23	Wed 4/24/24								
14	(13) Toilet Carriers Upgrades	Mon 9/11/23	Thu 5/2/24								
15	(14) TVY BLM Access Road	Tue 6/6/23	Tue 10/31/23								

Project: Microsoft Project (latest)
Date: Tue 11/7/23

CONSTRUCTION █

SALT LAKE CITY DEPARTMENT OF AIRPORTS
CONSTRUCTION PROJECT STATUS 2023 - 2024

#	PROJECT NAME	ENGINEER'S ESTIMATE	BID AMOUNT	APPROVED CHANGE ORDERS TO DATE	% OF COST INCREASE TO DATE	STATUS	CONTRACTOR
CONSTRUCTION							
1	North Cargo Apron Site Development	\$ 25,763,000	\$ 22,141,148	\$ 71,075	0.32%	on schedule	Ames Construction
2	Pump House No. 5 Renovations	\$ 841,630	\$ 1,630,000	\$ 26,672	1.64%	on schedule	Saunders Construction
3	Taxiway E Reconstruction F1-F2	\$ 6,658,691	\$ 6,731,600			complete	Ames Construction
4	Glycol E. and Intermediate E. Pumpstation Rehab.	\$ 794,861.50	\$ 358,508			on schedule	IPW LLC
5	Pump Station #9 Renovations	\$ 956,629.00	\$ 2,255,819			on schedule	Crescent Construction
6	Electrical Vehicle Charging Stations (FY23)	\$ 570,367.00	\$ 620,745			on schedule	Apex Electric LLC
7	Equipment Storage Building	\$4,482,931.00	\$4,070,100.00			on schedule	Paulsen Construction
8	Gateway Building Restroom Renovations	\$ 405,898	\$ 403,636	\$ 125,256	31.03%	on schedule	Paulsen Construction
9	Electrical & Communications Duct Bank AOC to Gate 7	\$ 3,371,053	\$ 3,517,988			on schedule	Americom Technology LLC
10	Gateway Sustainability Display	\$ 190,000	\$ 223,950			on schedule	Paulsen Construction
11	Replace PVC Roof Membrane on NS1	\$ 676,591	\$ 415,600			on schedule	Heritage Roofing
12	Replace PVC Roof Membrane on NS14	\$ 203,656	\$ 185,850			on schedule	Heritage Roofing
13	Toilet Carriers Upgrades	\$ 2,213,106	\$ 1,387,841			on schedule	Paulsen Construction
	Total	\$ 47,128,414	\$ 43,942,785	\$ 223,003	0.51%		
Engineer's estimate and Bid amount is based on construction cost only.							

CONSTRUCTION REPORT

CONSTRUCTION

- (1) **North Cargo Apron Site Development** - The apron and associated taxiways are now complete and open. The Contractor is currently working on a couple of punch list items with long lead times to include a Rocky Mountain Power service for the roadway lighting on 1580 North that is scheduled for the end of November 2023.
- (2) **Pump House No. 5 Renovation** - The Contractor has completed approximately 90% of the plumbing work and 75% of the electrical work. The project completion is anticipated for February 23, 2024.
- (3) **Taxiway E Reconstruction F1-F2** - This project was substantially complete as of October 18, 2023. The Contractor is currently working on minor punch list items.
- (4) **Glycol East and Intermediate East Pumpstation Rehabilitation** - Construction in the Glycol East station has been completed with only a few minor punch list items remaining. Modifications to the Intermediate East Pumpstation will be done in the Spring of 2024 due to pending weather and deicing operations.
- (5) **Pump Station #9 Renovations** - Electrical and mechanical submittals are being prepared for review and approval by SLCDA. Completion date for this project is anticipated for March 2025.
- (6) **Electrical Vehicle Charging Stations (FY23)** - The Contractor is nearing completion with the submittal process of review and approval by SLCDA. Site mobilization is scheduled to begin in January of 2024. Substantial completion is anticipated for November 27, 2024.
- (7) **Equipment Storage Building** - A notice to proceed was issued for this project on October 12, 2023. Site mobilization has started, and the Contractor is working on Public Utility connections. Substantial completion is anticipated for April 2025.
- (8) **Gateway Building Restroom Renovations** - Finishing touches are underway with the mill work and the toilet partitions. Project completion is anticipated for November 17, 2023.
- (9) **Electrical & Communication Duct Bank from AOC to Gate 7** - The Contractor continues to install duct bank at the existing RMP vault tie-in on the south end of Runway 17/35. Project completion is anticipated for November 25, 2023.
- (10) **Gateway Sustainability Display** - The display tower has been fabricated and the wood fins are being cut and applied. The benches have been finished and are ready for assembly. Once the tower is complete, installation will take place. Project completion is anticipated for November 21, 2023.
- (11) **Replace PVC Roof Membrane on NS1** - The Contractor anticipates starting the roofing membrane work by November 13, 2023. Completion date for this project is April 24, 2024.
- (12) **Replace PVC Roof Membrane & Greenhouse Panels on NS14** - The Contractor anticipates starting the roofing membrane work by November 13, 2023. The Greenhouse Contractor is working on the submittal process with a tentative start date of December 1, 2023, for the panels. Completion date for this project is April 24, 2024.
- (13) **Toilet Carriers Upgrades** - The Contractor has completed the toilet carrier upgrades for all of the restrooms on the non-secure side of the airport. Work will begin on the secure side on November 7, 2023. The anticipated completion date for this project is May 2, 2024.