



Advisory Board
Meeting

February 16, 2022

Agenda



Advisory Board Meeting

February 16, 2022

Pursuant to City Code 2.14.060(A) and Utah Code section 52-4-207(2), the Airport Advisory Board adopted a rule permitting electronic meetings for this Board, regardless of whether a quorum is present at an anchor location, so long as such meetings comply with the Open and Public Meetings Act.

To access the meeting please visit:

<https://saltlakecity.webex.com/saltlakecity/onstage/g.php?MTID=ef18d7fb98f26f7aa6b41124a67e9e2d3>



ADVISORY BOARD MEETING AGENDA

16 February 2022

8:00 A.M.

CONSENT

- A. Minutes of the 19 January 2022 Meeting

DISCUSSION

- A. Director's Report – Bill Wyatt, Executive Director, SLCDCA
- B. Airport Redevelopment Program (ARP) Update – Mike Williams, ARP Director, SLCDCA
- C. U42 (SVA) and TVY Master Plans – Peter Maiman, RS&H

INFORMATION ITEMS

Financial Report – December 2021
Air Traffic Statistics – December 2021
Construction Report – February 2022

MEDIA CLIPPINGS

Media Clippings – February 2022

The next meeting will be held on **Wednesday, March 16, 2022**, at 8:00 a.m. Meetings are usually held in the Board Room, located on the third level of the airport terminal and via Web-ex unless otherwise posted. People with disabilities may make requests for reasonable accommodations no later than 48 hours in advance in order to attend this Airport Advisory Board Meeting. Accommodations may include alternate formats, interpreters, and other auxiliary aids. This is an accessible facility. For questions or additional information, please contact Tina Nee at 801-575-2042.



Advisory Board
Meeting

February 16, 2022

Minutes

SALT LAKE CITY DEPARTMENT OF AIRPORTS MINUTES OF ADVISORY BOARD MEETING

January 19, 2022

Members Present: Steve Price, Chair
Cyndy Miller
Larry Pinnock
Arlyn Bradshaw
Roger Boyer
Dirk Burton

City Council: Victoria Petro-Eschler

Department of Airports: Bill Wyatt, Executive Director
Tina Nee, Administration
Treber Anderson, Acting Director of Operations
Ed Cherry, Director of IT
Ed Clayson, Director of Maintenance
Shane Andreasen, Director Admin and Commercial Services
Medardo Gomez, ORAT Director
Brady Fredrickson, Director of Planning and Environmental
Pete Higgins, Chief Operations Officer
Mike Williams, ARP Program Director
Stephan Bennett, SLC Police Captain
Rick Stratton, SLCFD Battalion Chief
Nancy Volmer, Communication and Marketing Director
Catherine Brabson, City Attorney
Megan DePaulis, City Attorney
Nate Lavin, Communication and Marketing

Other: Andrew Scanlon, Kimley-Horn
Paul Coates, City of West Jordan
Brian Bangerter, HNTB
Andy C
Shawn Milne, Tooele County
David Chipman
Jurphy Murphy
Jeremy Harris, KUTV
Jim Lohse, FFKR

Steve Price called the meeting, held via Web-Ex to order at 8:06 a.m.

AGENDA

A. Minutes

A motion was made by Cyndy Miller and seconded by Larry Pinnock to approve the minutes of November 17, 2021 as presented. All votes were affirmative; motion passed.

B. Director's Report

Bill Wyatt, Executive Director, updated the Airport Advisory Board regarding current events.

Larry Pinnock ask what the airport exposure is regarding the 5G upgrade.

Bill Wyatt explained the FAA has information they cannot share, and we don't know where the towers are. SLC has exception due to towers not being close enough.

C. Airport Redevelopment Program (ARP) Update – Mike Williams, ARP Director, SLCDA

Mike Williams, Airport Redevelopment Program (ARP) Director, presented an update on the ARP (presentation on file). Main points included were:

- Project statistics
- Safety and Schedule Stats, and Cost Summary
- Project statistics
- CGMP #5 – Terminal/South Concourse West/Gateway status
- CGMP #6 – Roadways/Parking Garage/Central Utility Plant status
- CGMP #7 – Baggage Handling System status
- CGMP #9A – SCW Apron Paving and Hydrant Fueling status
- CGMP #16 – NCP Phase 1
- CGMP #17 – NCP Baggage Handling System Phases 1 & 2 status
- CGMP #18 – NCP Apron Paving/ Hydrant Fueling
- Tracking Budget
- Job progress photos

Roger Boyer inquired if the tunnel could be completed earlier.

Mike Williams explained even though the tunnel will be completed earlier, the B-Node connecting the tunnel to B Concourse will not be. The team is always looking for way to shave time.

Larry Pinnock asked what method of moving passengers the tunnel will have.

Mike Williams said currently, moving walkways.

Bill Wyatt added the team is studying a more robust people mover using electric vehicles. A train is years out as it was not intended until C Concourse was built. The supporting infrastructure is not in place and is not feasible at this time.

**D. Winter Operations – Treber Andersen, Director of Operations and Dusty Bills,
Assistant Maintenance Director**

Treber Andersen, Director of Operations and Dusty Bills, Assistant Maintenance Director, presented Winter Operations (presentation on file). Main points included were:

- Average Snowfall in Inches
- Annual Snowfall in Salt Lake City
- Snow and Ice Control Plan
- Airport Snow Removal Areas
- Snow Removal Team
- Airfield Snow and Ice Removal Equipment
- Landside Snow and Ice Removal
- Snow Operations – Behind the Scenes

Larry Pinnock completed the crew and stated how well choreographed the system is.

E. Elections of Board Chair and Vice-Chair

Steve Price called for a motion for a vote by acclamation of the nomination of Steve Price as Airport Advisory Board Chair and for Theresa Foxley as Vice Chair. All votes were affirmative.

Steve Price adjourned the meeting at 9:30 a.m.

Steve Price, Chair

Date

Erin Mendenhall, Mayor

Date



Advisory Board
Meeting

February 16, 2022

Discussion Items

AGENDA: DISCUSSION ITEM (A)
DATE: 16 February 2022
TO: Airport Advisory Board
FROM: Bill Wyatt, Executive Director
SUBJECT: **Executive Director's Report**

Bill Wyatt will present a monthly informational report to the Board, which may include:

1. ARP progress
2. Ground transportation update
3. Concessions and rental cars
4. Airport safety and security
5. Airport facilities and operations
6. General aviation
7. Passenger and airport users
8. Environmental matters
9. Financial condition
10. Legislative issues
11. Airlines
12. Communications and marketing

AGENDA: DISCUSSION ITEM (B)
DATE: 16 February 2022
TO: Airport Advisory Board
FROM: Bill Wyatt, Executive Director
SUBJECT: **Airport Redevelopment Program Update**

Mike Williams, Airport Redevelopment Program (ARP) Director, will present an update on the SLC Airport Redevelopment Program (presentation on file).



AIRPORT REDEVELOPMENT PROGRAM

Status Update 02/16/2022



Safety and Schedule



Safety Statistics

Numbers for the Current Month

- **OSHA National Average**
 - **Lost Time Rate 1.80 Recordable Rate 3.10**
- **HDJV Metrics**
 - **9,119,311 Total Trade Hours worked**
 - **Lost Time Rate 0.24 Recordable Rate 2.30**

Numbers for the Program Overall

- **ARP Metrics (HDJV+AOJV)**
 - **11,280,345 Total Trade Hours worked**

Schedule Status - Critical Path

- **Continuation of Concourse 'A' East Exterior Curtainwall and Roofing Installation**
- **Continuation of Concourse 'A' East Overhead MEP Installations**
- **Completion of Taxiway 'G' P-501 Concrete Paving**
- **Start of P-154 Base Installation & Grading over the Central Tunnel**
- **Overall Program is on schedule**

Near Term Schedule Milestones



Target Date	Current Date	Description
02/04/22	Started	Central Tunnel - Start Interior Platform Concrete
02/14/22	02/14/22	Concourse B East - Start Site Utilities
02/28/22	03/01/22	Concourse A East - Area C Dry-in
03/02/22	03/07/22	Concourse A East - Area A Level 2 Start Drywall
03/14/22	03/14/22	Taxiway G South - Punchlist
03/16/22	03/16/22	Taxilane 2E - Turn-over Tunnel Area to Airfield Construction
03/31/22	03/31/22	Concourse A East - Start Communications Backbone
04/01/22	04/06/22	Concourse A East - Area A Level 2 Start Terrazzo Floor Prep
04/01/22	04/06/22	Concourse A East - Area B Level 2 Start Drywall
04/14/22	04/14/22	Concourse B East - Start Stone Columns

Airport Redevelopment Program Overall Budget



Construction Budget January 2022	Budget 1/27/22 FOC	Committed Dec-21	Commitments Jan-22	*Pending Commitments	Revised Commitments	Earned to Date	Estimate at Completion
Closed TRP CGMPs 1, 2, 2A-2D, 3, 4, 9, 09A, 12	\$393,627,262	\$400,284,798	(\$6,657,536)	\$0	\$393,627,262	\$393,626,888	\$393,627,262
Closed NCP CGMPs 13, 14, 15, 16, 17, 18 & 19	\$487,852,444	\$487,852,444	\$0	\$0	\$487,852,444	\$487,852,444	\$487,852,444
CGMP 2E,F&H CMAR General Conditions/Services	\$107,642,170	\$100,410,170	\$0	\$0	\$100,410,170	\$22,581,684	\$107,642,170
CGMP 05 Terminal/SCW/Gateway	\$1,042,104,411	\$1,042,670,036	(\$565,625)	\$0	\$1,042,104,411	\$1,042,104,411	\$1,042,104,411
CGMP 06 Parking Garage, Roadways, CUP	\$403,477,666	\$405,856,439	\$0	(\$2,378,773)	\$403,477,666	\$401,083,055	\$403,477,666
CGMP 07 TRP Baggage Handling System	\$96,289,987	\$96,289,987	\$0	\$0	\$96,289,987	\$96,289,987	\$96,289,987
CGMP 10 South Concourse East/Tunnel Shell	\$540,188,144	\$540,188,144	\$0	\$0	\$540,188,144	\$251,762,463	\$540,188,144
CGMP 11, 11A & 11B Apron Paving & Fueling	\$275,423,126	\$203,341,893	\$0	\$0	\$203,341,893	\$95,486,095	\$275,423,126
CGMP 19A Phase 3 NCP/Tunnel Buildout	\$332,870,248	\$332,870,248	\$0	\$0	\$332,870,248	\$2,235,556	\$332,870,248
CGMP 20 NCP Phase 2 Airfield Paving & Jet Fuel	\$77,645,774	\$77,645,774	\$0	\$0	\$77,645,774	\$541,127	\$77,645,774
Total Program Construction	\$3,757,121,232	\$3,687,409,933	(\$7,223,161)	(\$2,378,773)	\$3,677,807,999	\$2,793,563,710	\$3,757,121,232
TRP Owner Procurement	\$5,465,472	\$5,335,714	\$0	\$0	\$5,335,714	\$4,808,421	\$5,465,472
NCP Owner Procurement	\$2,655,266	\$2,655,266	\$0	\$0	\$2,655,266	\$1,860,182	\$2,655,266
Security Checkpoint Equipment	\$12,751,472	\$11,751,472	\$0	\$0	\$11,751,472	\$7,848,061	\$12,751,472
Automated Security Exit Door Equipment	\$672,000	\$0	\$0	\$0	\$0	\$0	\$672,000
TRP Soft Cost	\$379,256,065	\$306,722,812	\$1,432,748	\$0	\$308,155,560	\$288,006,903	\$379,256,065
NCP Soft Cost	\$185,593,794	\$128,632,412	\$19,896	\$0	\$128,652,308	\$99,047,910	\$185,593,794
Total Program Soft Cost	\$586,394,069	\$455,097,676	\$1,452,644	\$0	\$456,550,320	\$401,571,477	\$586,394,069
CGMP 2G CMAR Preconstruction Phase 4	\$1,414,757	\$1,414,757	\$0	\$0	\$1,414,757	\$302,760	\$1,414,757
NCP Soft Cost Phase 4	\$15,840,094	\$15,840,094	\$0	\$0	\$15,840,094	\$1,278,052	\$15,840,094
Total Phase 4 Planning Cost	\$17,254,851	\$17,254,851	\$0	\$0	\$17,254,851	\$1,580,812	\$17,254,851
TRP Owner Reserve	\$40,035,245	\$0	\$0	\$0	\$0	\$0	\$40,035,245
NCP Owner Reserve	\$51,167,665	\$0	\$0	\$0	\$0	\$0	\$51,167,665
Total Program Owner Reserve	\$91,202,910	\$0	\$0	\$0	\$0	\$0	\$91,202,910
Total ARP Program Budget	\$4,451,973,062	\$4,159,762,460	(\$5,770,517)	(\$2,378,773)	\$4,151,613,170	\$3,196,716,000	\$4,451,973,062

*Pending Commitment for Final/Closeout Revision to CGMP 6 will reduce the CGMP 6 commitment to the 09/02/21 Budget

Project Statistics Update



TRP/NCP Trade Staffing
Trade Workers 658 (02/04/2022)
11,280,345 Hours Worked as of 01/31/2022

Contract Local/Non-Local Awarded Statistics

Local Trades	Dollar Value	Trade Count	Percentage
Total Local (Wasatch Front) Contractors	\$1,538,140,821	142	66.49%
Total Out of State Contractors	\$775,133,467	36	33.51%
Total Contract Awards	\$2,313,274,288	178	100.00%

Contract Union/Merit Shop Awarded Statistics

Union Trades	Dollar Value	Trade Count	Percentage
Total Union Contractors	\$771,349,699	43	33.34%
Total Merit Shop Contractors	\$1,541,924,589	135	66.66%
Total Contract Awards	\$2,313,274,288	178	100.00%

Concourse 'A' East/ Central Tunnel/Airfield

Central Tunnel Concrete Structure

- **Concrete Mat (Bottom) Slab Concrete Placement Complete**
- **Lid Concrete Placement Complete in Main Tunnel**
- **Wall Waterproofing and Protection Board Continuing**
- **Wall and Lid Backfill Progressing**

Concourse 'A' East

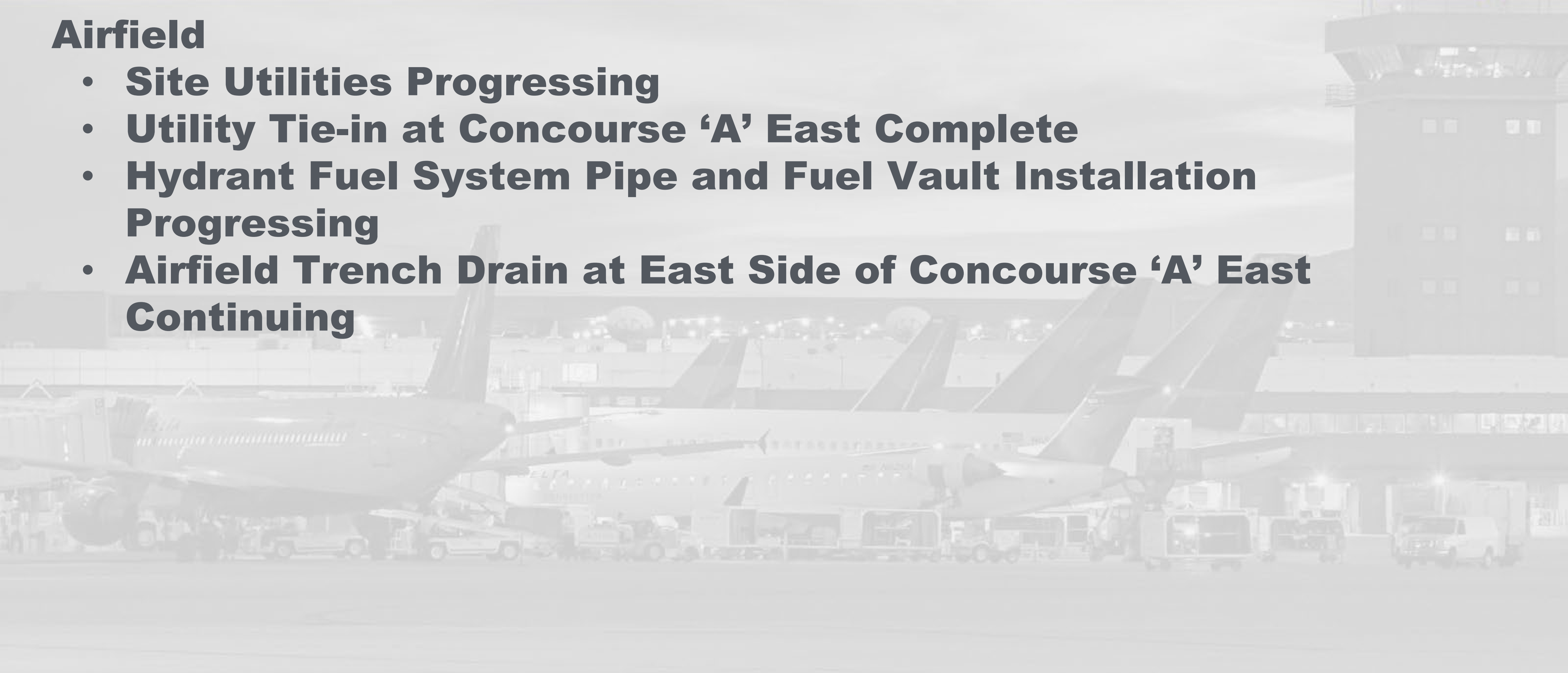
- **Mechanical, Electrical and Plumbing Rough-in Progressing**
- **Baggage Handling System Conveyor Installation Continuing**
- **Spray-on Insulation and Fire Proofing Continuing**
- **Exterior Studs, Sheathing and Vapor Carrier Progressing**
- **Exterior Curtainwall Installation Continuing**
- **Moving Walk Installation Continuing**
- **Electrical and Telecom Priority Room Construction Progressing**

Concourse 'A' East/ Central Tunnel/Airfield



Airfield

- **Site Utilities Progressing**
- **Utility Tie-in at Concourse 'A' East Complete**
- **Hydrant Fuel System Pipe and Fuel Vault Installation Progressing**
- **Airfield Trench Drain at East Side of Concourse 'A' East Continuing**

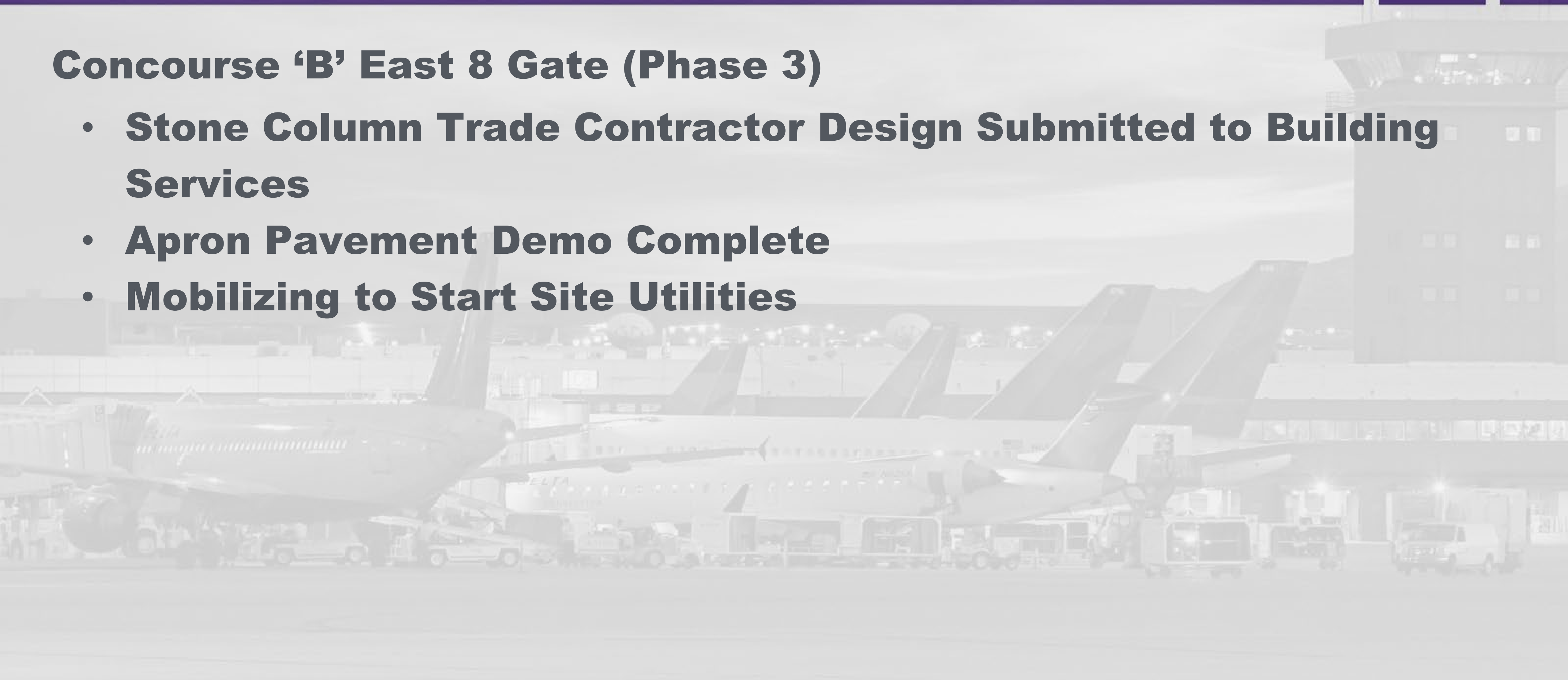


Concourse 'B' East (Phase 3)

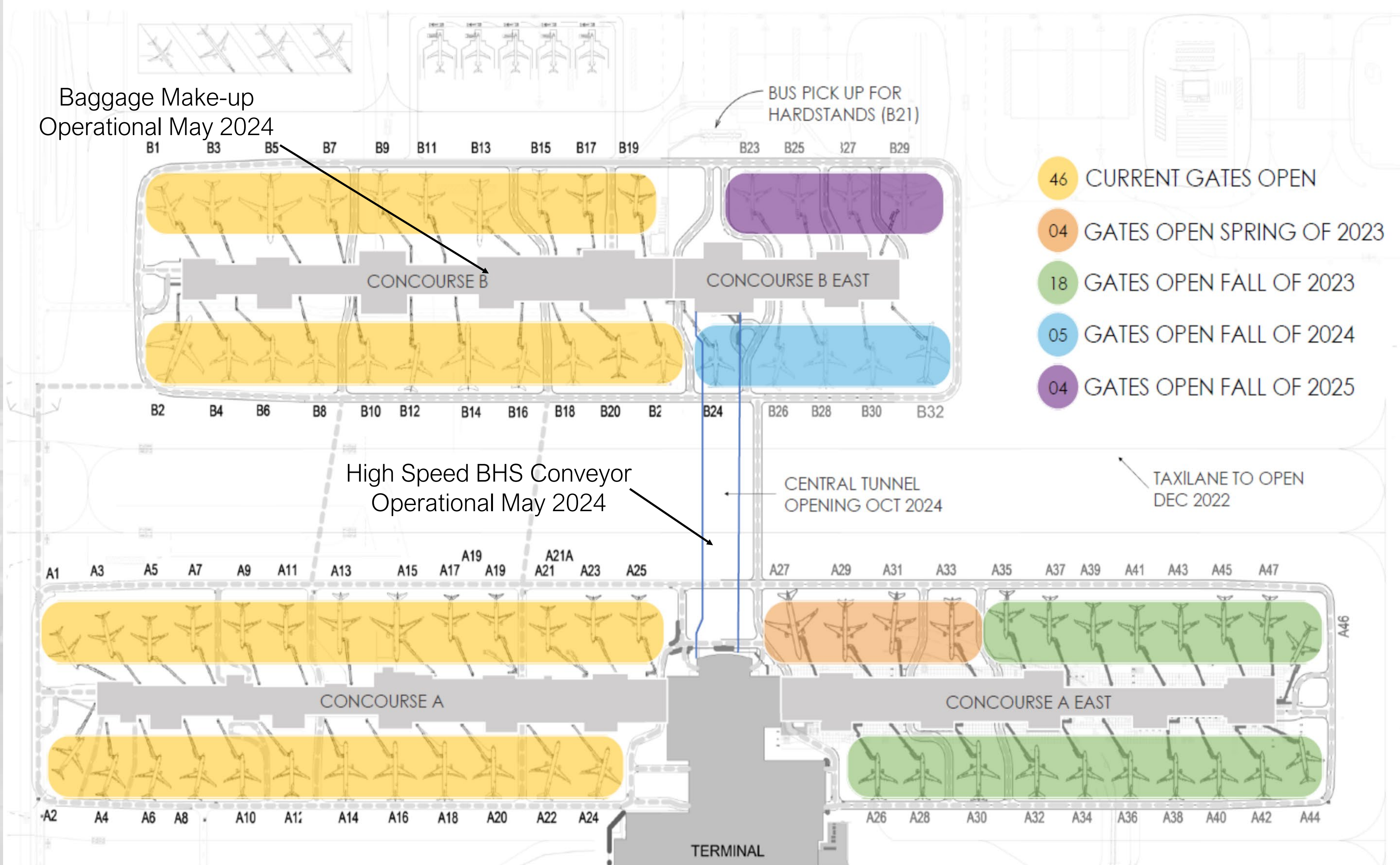


Concourse 'B' East 8 Gate (Phase 3)

- **Stone Column Trade Contractor Design Submitted to Building Services**
- **Apron Pavement Demo Complete**
- **Mobilizing to Start Site Utilities**



Overall Phase 2 and Phase 3 Phased Delivery

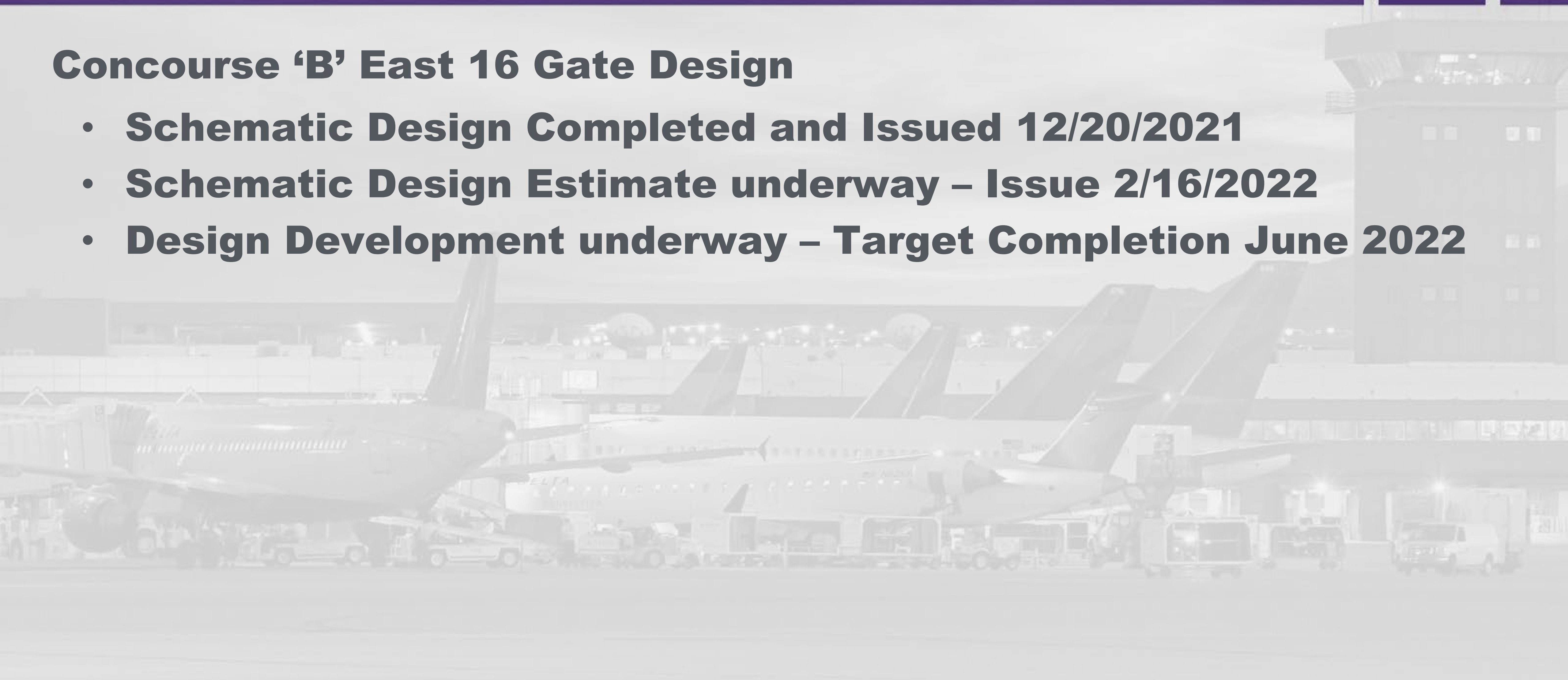


Phase 4 (Concourse 'B' East 16 Gate) Design



Concourse 'B' East 16 Gate Design

- **Schematic Design Completed and Issued 12/20/2021**
- **Schematic Design Estimate underway – Issue 2/16/2022**
- **Design Development underway – Target Completion June 2022**



Concourse A and Airfield



Central Tunnel



Central Tunnel Backfill at Plaza



Terminal and New Construction



Concourse 'A' East



Level 2 Area B Hydronic Piping



Level 2 Area C Moving Walkways

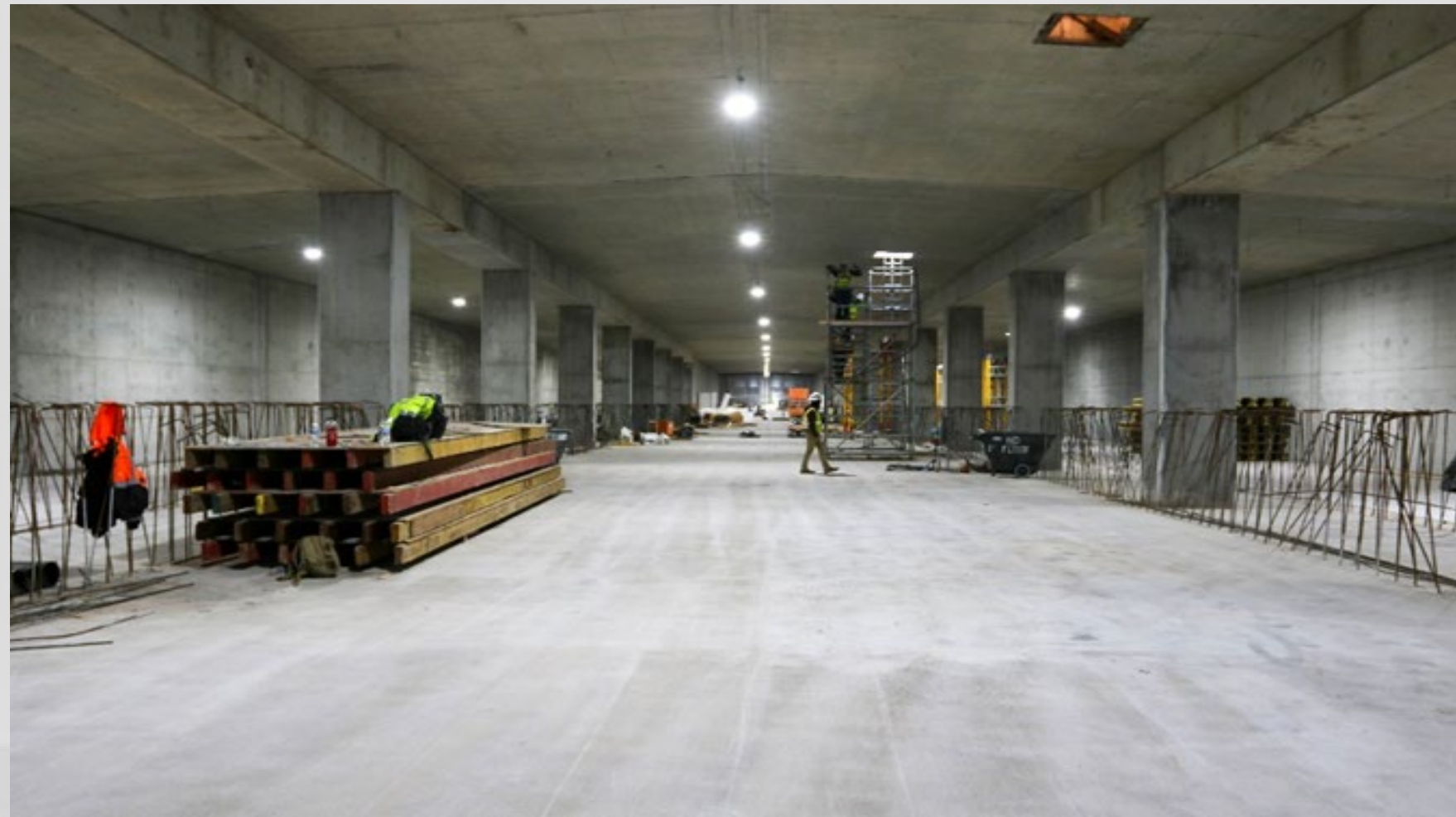


Level 1 Area C Interior Masonry

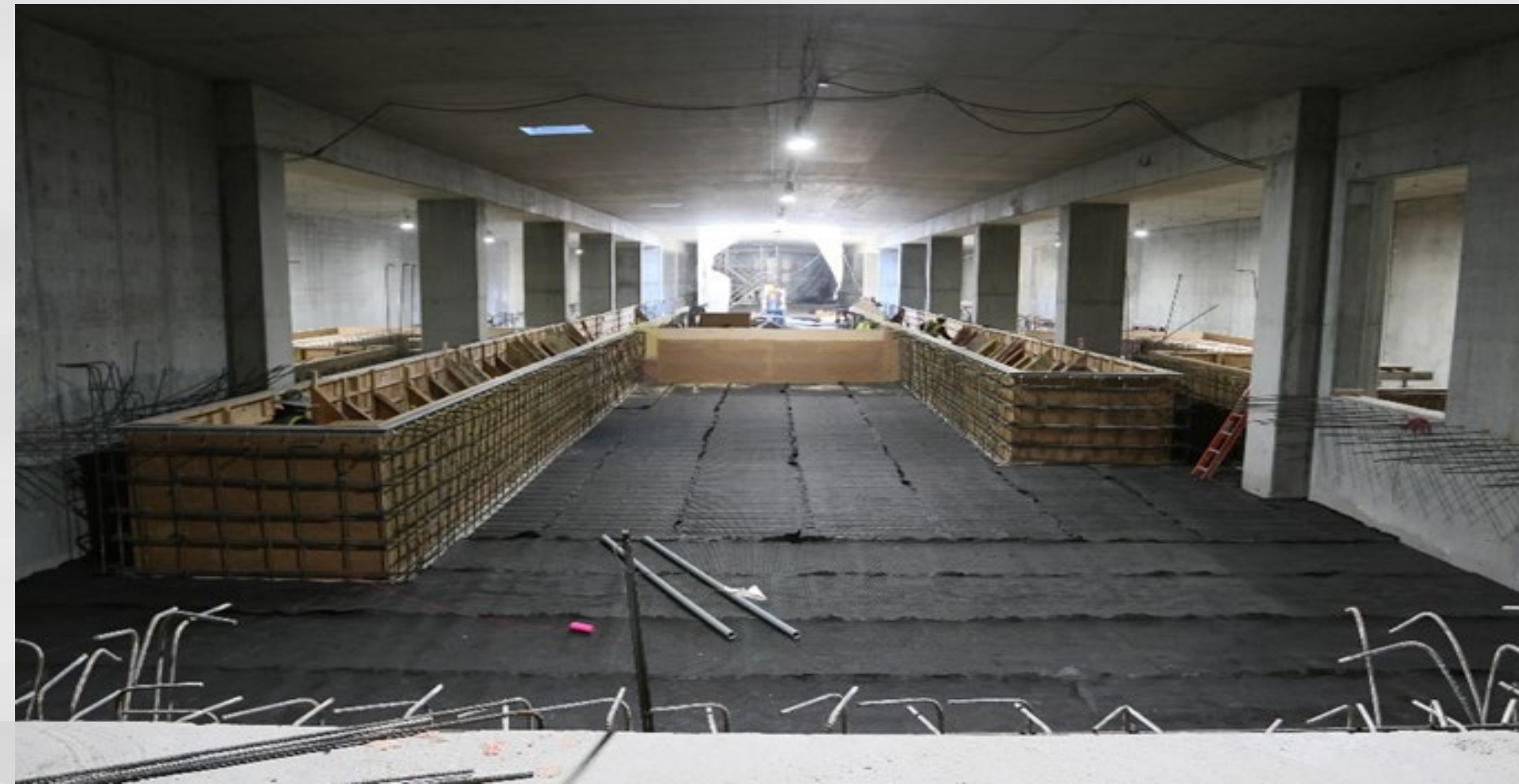


Area D Rooftop Cooling Towers

Central Tunnel Interior



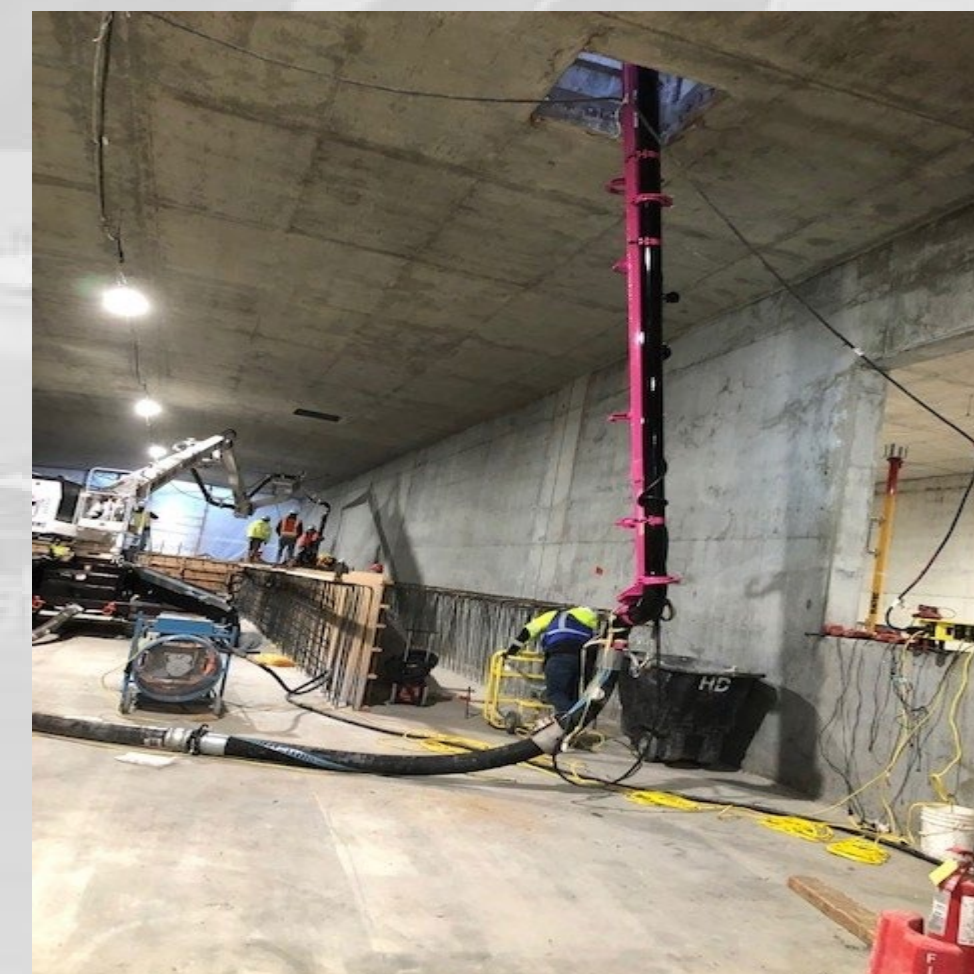
Area A Passenger Circulation Cell



Area D Passenger Circulation Cell



APM Platform Concrete Placement



Concrete Hose from Truck into Tunnel to Spider

AGENDA: DISCUSSION ITEM (C)
DATE: 16 February 2022
TO: Airport Advisory Board
FROM: Bill Wyatt, Executive Director
SUBJECT: **SVA/ TVY Master Plans Presentation**

Peter Maiman, Kelsey Reeves, Michael Becker and Steve Domino from RS&H will present an update on the master plans for SVA and TVY (presentation on file.)



U42/TVY MASTER PLANS

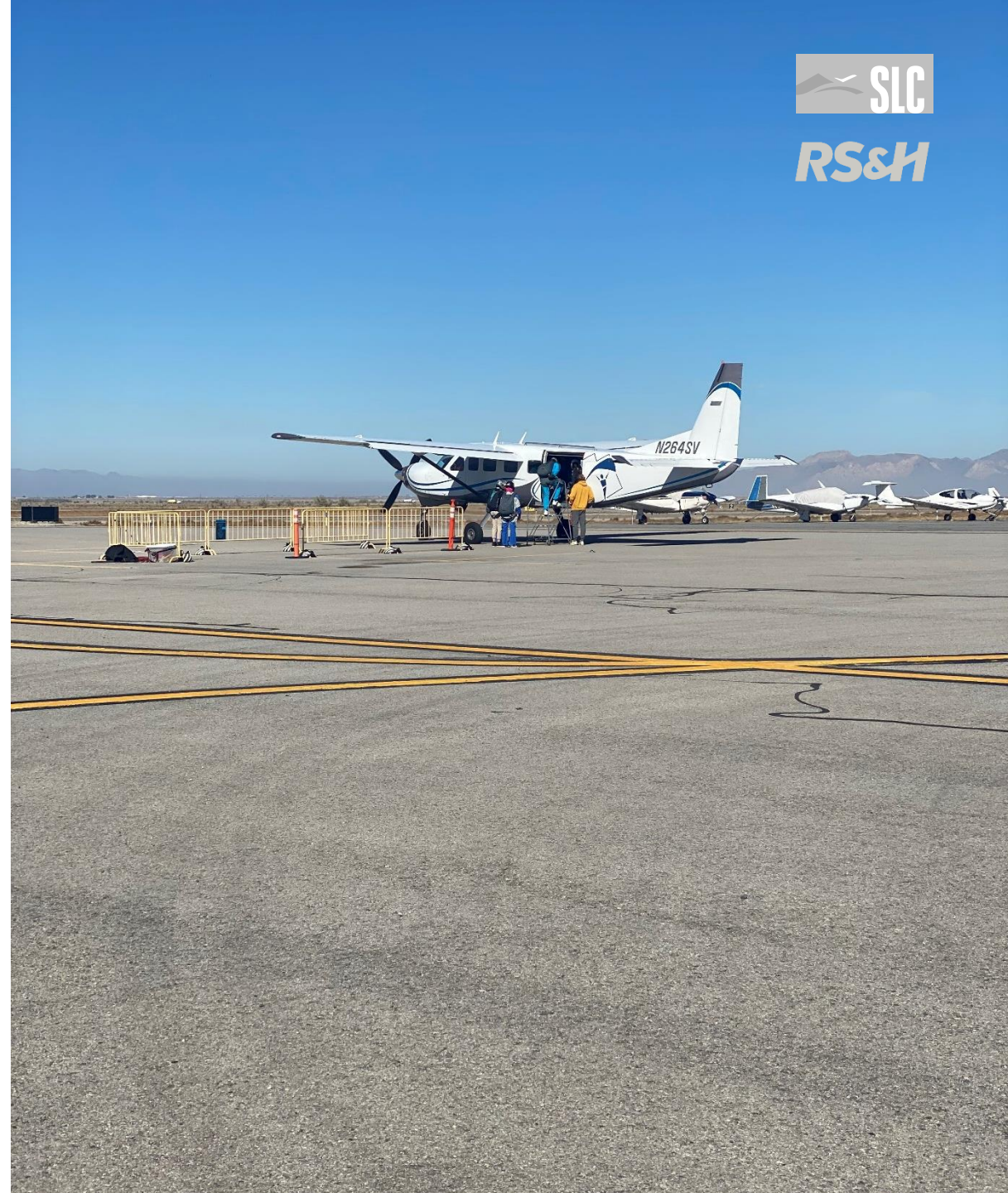
PROJECT UPDATE 2.16.2022



DEPARTMENT OF AIRPORTS

Agenda

- » Master Plans Project Overview
- » Visioning Summary
- » Tenant Survey
- » Forecast
- » Next Steps



2021

2022

2023

J A S O N D J F M A M J J A S O N D J F M A M J J A

Investigation Phase

Solutions Phase

Implementation Phase

Visioning

Aviation Activity Forecast

Existing Conditions

Public Communication Plan

Working Paper One
Inventory

Facility Requirements

Working Paper Two
Forecast

FAA Review

Working Paper Three
Facility Requirements

Alternatives

Identify Alternatives

Evaluate Alternatives

Select Alternatives

AGIS

Minimum Standards

Utilities

Airspace

Environmental Analysis

Working Paper Five
Environmental Documentation

Financial Feasibility

Working Paper Six
Financial Feasibility

Facilities
Implementation Plan

Working Paper Seven
CIP

Airport Layout Plan
Set

Airport Layout Plan & Exhibit A

FAA Review

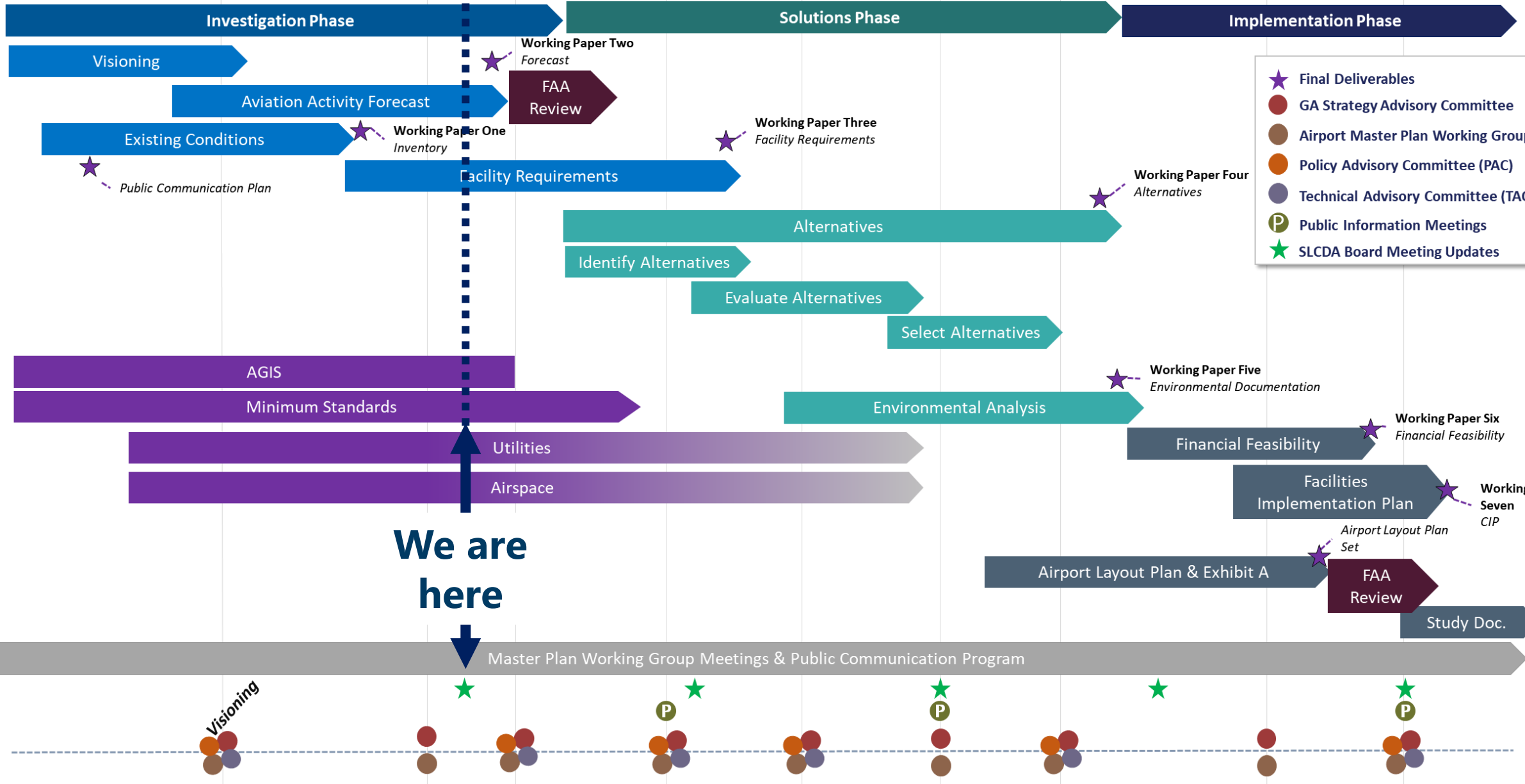
Study Doc.

We are here

Master Plan Working Group Meetings & Public Communication Program

Visioning

- ★ Final Deliverables
- GA Strategy Advisory Committee
- Airport Master Plan Working Group
- Policy Advisory Committee (PAC)
- Technical Advisory Committee (TAC)
- Ⓟ Public Information Meetings
- ★ SLCDA Board Meeting Updates



Visioning Exercise – Hybrid Virtual/In-Person

TVY & U42 SLCD A AIRPORT WORKING GROUP VISIONING

TVY

Training Airport - need will become similar to SVR- need facility

Students at can depart they are train unlike U42, have to fly to TVY

TOOELE VALLEY AIRPORT VISIONING

AIRSIDE FACILITIES

U42

During races - 3 jets at times. Falcon 50. Walmart Lear - more jet traffic. With Jet-A onsite more jets probable

Runway strength for more ops, jet ops etc.

More ramp - Jet focused facilities

SUPPORT FACILITIES

TVY

Jet-A fuel services for BLM and others

Nature Fiber optic

Need utilities!

if you build it they will come

U42

Get out of the FBO Businesses

Trailers from "top" can be used for offices (high schools)

Infrastructure for electric aircraft

SUPPORT FACILITIES

North ramp running out of space - Richy (no Junctions and Runway aviation ops)

Future FBO

Support for training ops

On-site airport maintenance - winter ops

Fuel station and public restrooms are on opposite sides

Pilot lounge facility - skydive center currently adhoc filling that function

BLM and Skydive ops separation is good

BLM - king air, 3-4 attack, helicopter crew at least 2 seats onsite. Up to 6-8 seats loading

Jet A on site important for BLM ops

Transit to/from TVY for flyins. FBO car, Uber, etc.

SOUTH VALLEY REGIONAL AIRPORT VISIONING

AIRSIDE FACILITIES

more aircraft parking, tie-downs, hangars

runway shift north to optimize capacity, performance capability, optimum runway length?

Set the airport up for long term development

LANDSIDE FACILITIES

7800 is controlled by West Jordan 9000 is controlled by UDOT

roadway jurisdictional challenges with improvements

recently completed Southwest Salt Lake Transportation Study

improve east west transportation

LAND USE

utility capacity (water, sewer and ground transportation right of way)

WFRIC has been working with the region to identify future land use planning and transportation (road, transit, and bike/bed)

Making sure zoning and airport overlay is adequate and protects airport in future

aeronautical and aviation compatible non-aeronautical, especially on east side

Land use and development to make U42 profitable

SUPPORT FACILITIES

deicing, corporate traffic need

updated fuel farm, 2 self serve too

Possibility to support BLM forest service ops

air cargo and future tech for transport

vertical takeoff

Updated fuel farm. Not only tanks, but more capacity, and possibly (2) self serve areas.

inland port satellite campus

SUSTAINABILITY & ENVIRONMENT

Incorporate resiliency for community

rapid growing population

TENANTS & INDUSTRY TRENDS

understanding of process to develop facilities (tie-downs, hangars)

Integration between helicopter student tenants (not guard) and fixed wing ops- FAA regulations

New SOPs

mechanic shortage issue, events to get community excited about aviation; connect to educational programs

Down the road but something to consider is the impacts of electrified aviation and how to accommodate charging

COMMUNITY

challenge - late night aircraft noise, maint engine runups, etc.; reduce/eliminate late night noise

U42 airport as part of a system of airports; general aviation rollover role

noise abatement - good neighbors

AIRPORT FINANCES

revenue generation, return on

make airport attractive to investors and economic

AIRSPACE

non-standard traffic pattern

Hill AFB

U42 EXISTING AIRPORT LAYOUT PLAN (2007)



U42 Stakeholder Visioning Comments

- » More tie-downs and hangars
- » Deicing for corporate aircraft
- » Fuel farm enhancements (self-fuel and capacity)
- » Land use & development to make U42 profitable (East Side development)
- » Update zoning and airport overlay to protect airport
- » Evaluate runway for optimization (length and airspace)
- » Next-Gen readiness (electrification)
- » Continued efforts to be a “good neighbor” (soccer fields, noise)
- » Amenities (museum, stem facility, restaurant, hotel etc.)

TVY Stakeholder Visioning Comments

- » Utilities are needed for growth (water, sewer, fiber, and power upgrades)
- » Additional vehicle parking
- » Improved jet facilities (apron space, runway strength, Jet A fuel, FBO)
- » Additional radar coverage to support growth
- » Facility for flight training businesses to operate
- » Roadway improvements (Erda Way, north access, realign airport road)
- » Land acquisition
- » Community compatibility (overlay zone, economic development)

GA Tenant Survey - 195 Total Responses

Validated Responses Overview

57

Own/lease at Salt Lake City International Airport (SLC)

76

Own/lease at South Valley Regional Airport (U42)

9

Own/lease at Tooele Valley Regional Airport (TVY)

53

Not a tenant with Salt Lake Department of Airports
(SLCDA)

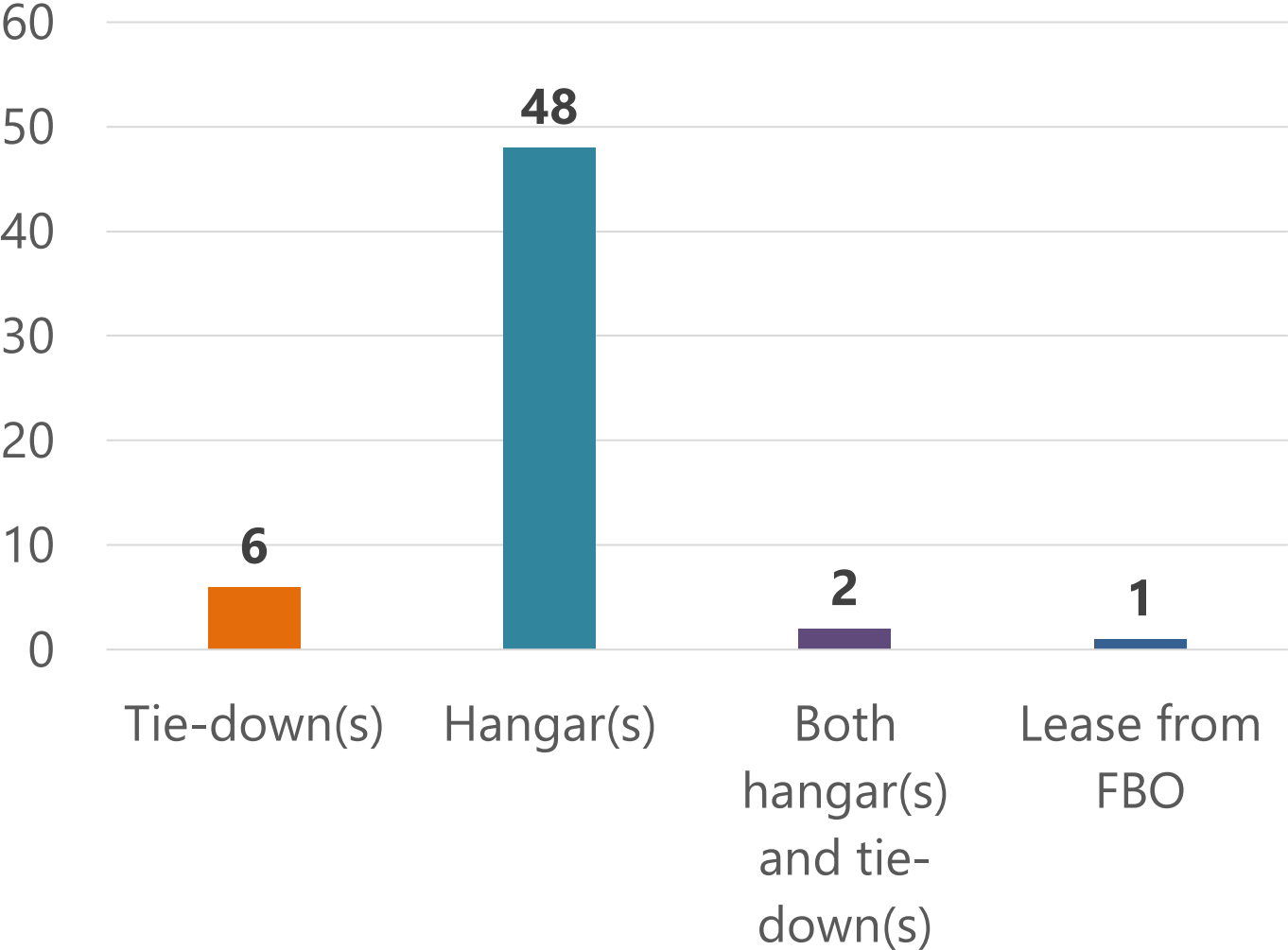
SLC - 57 Tenant Responses

 Tie-down tenants

 Hangar tenants

 Tenants with both a tie-down and hangar

 Tenants with an FBO lease



SLC Tenant Responses

57

Responses

40

Willing to relocate

Potential Demand

U42

46

Hangars

TVY

3

Hangars

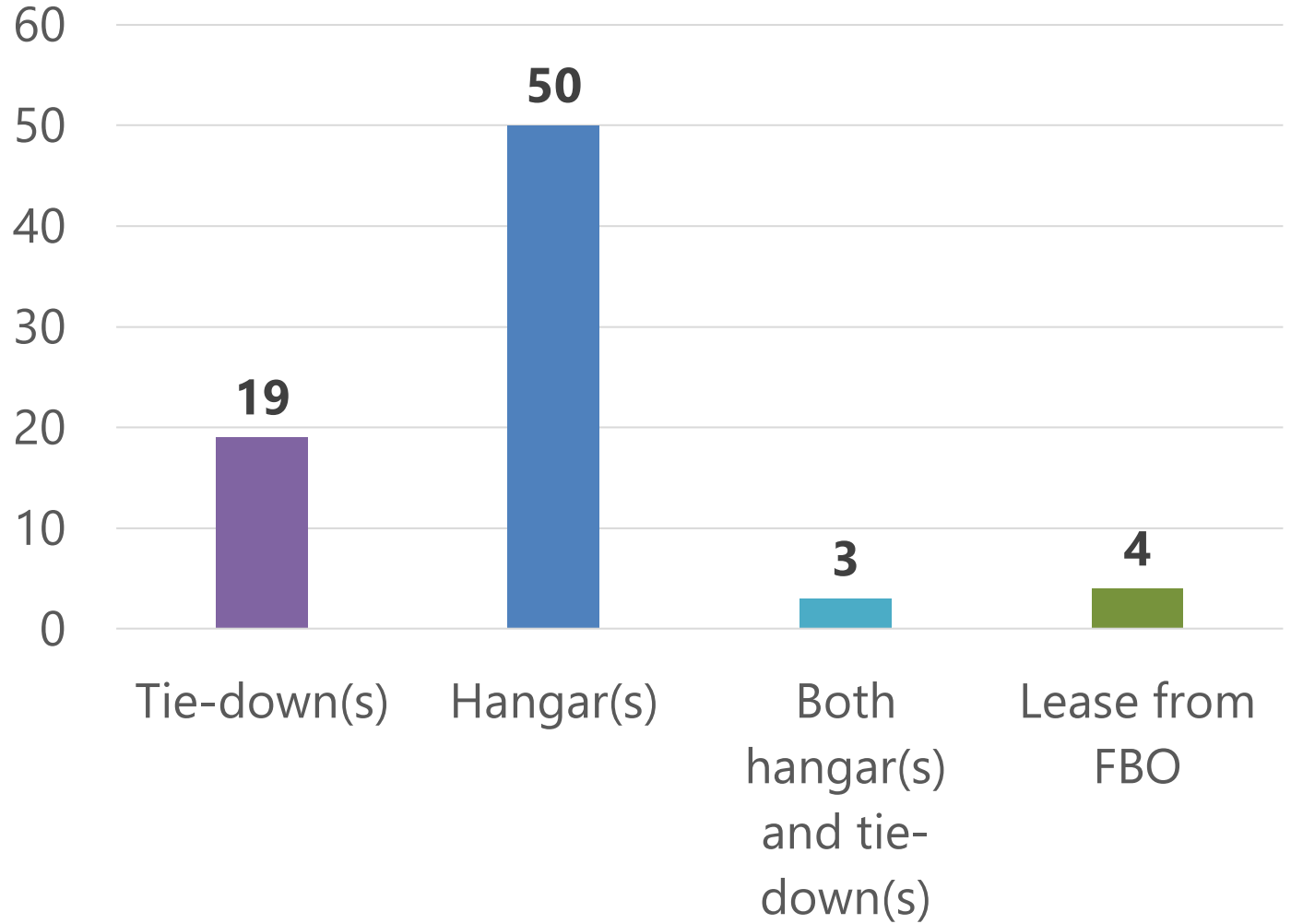
U42 – 76 Tenant Responses

 Tie-Down tenants

 Hangar tenants

 Tenants with both a tie-down and hangar

 Tenants with an FBO lease



U42 Tenant Responses

76

Responses

32

Want a hangar


Potential Demand


54

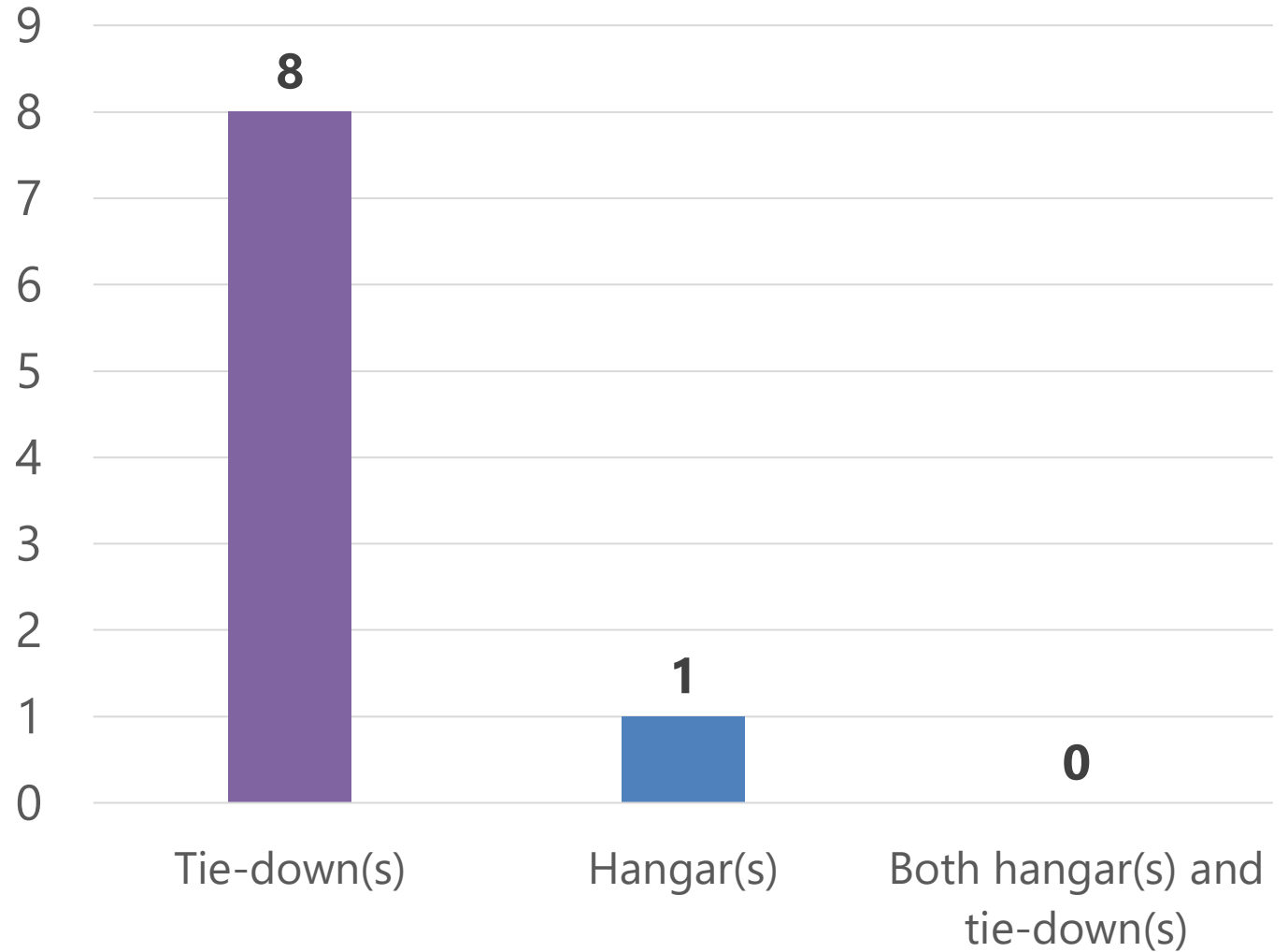
Hangars

TVY – 9 Tenant Responses

 Tie-Down tenants

 Hangar tenants

 Tenants with both a tie-down and hangar



SALT LAKE CITY (SLC)

SOUTH VALLEY (U42)

TOOELE VALLEY (TVY)

NON-TENANT

SUMMARY

TVY Tenant Responses

8

Responses

7

Want a hangar(s)

Potential Demand

U42

3

Hangars

TVY

5

Hangars

SALT LAKE CITY (SLC)

SOUTH VALLEY (U42)

TOOELE VALLEY (TVY)

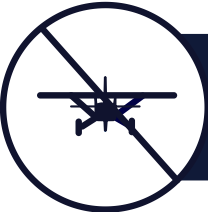
NON-TENANT

SUMMARY

53 Non-Tenant Responses



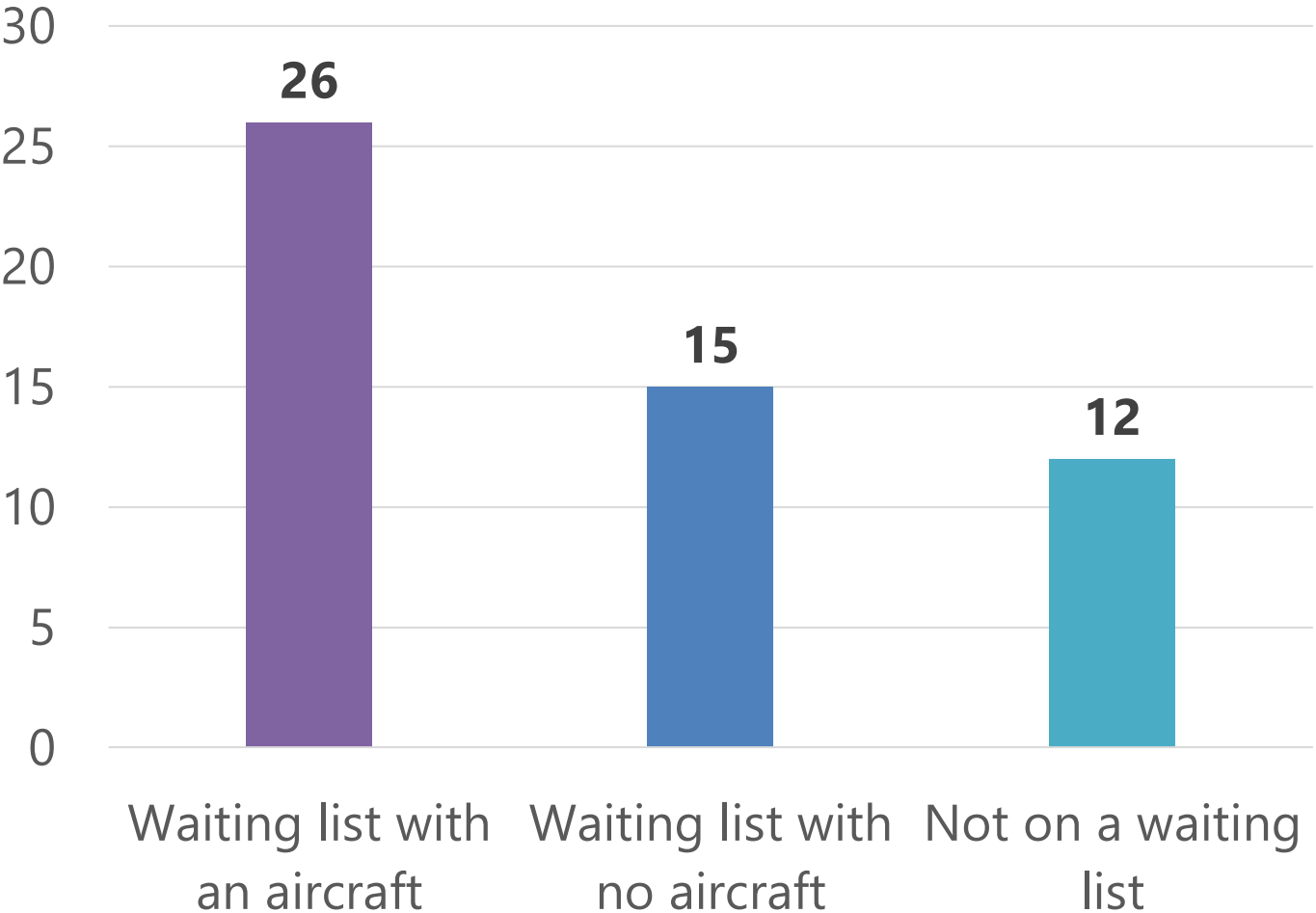
Waiting list with an aircraft



Waiting list with no aircraft



Not on a waiting list



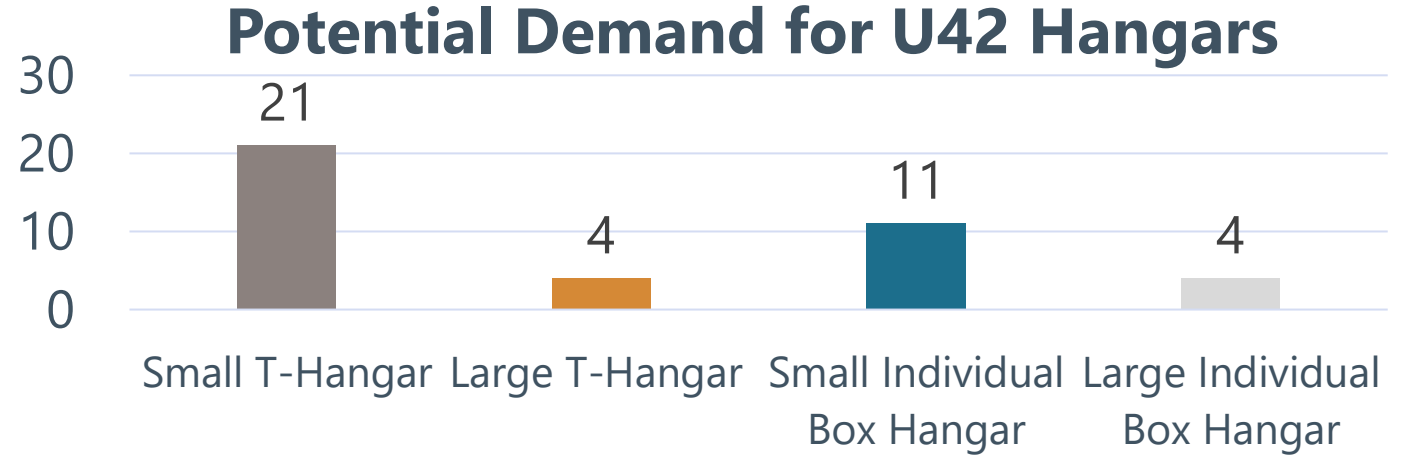
Non-Tenant Respondents

40

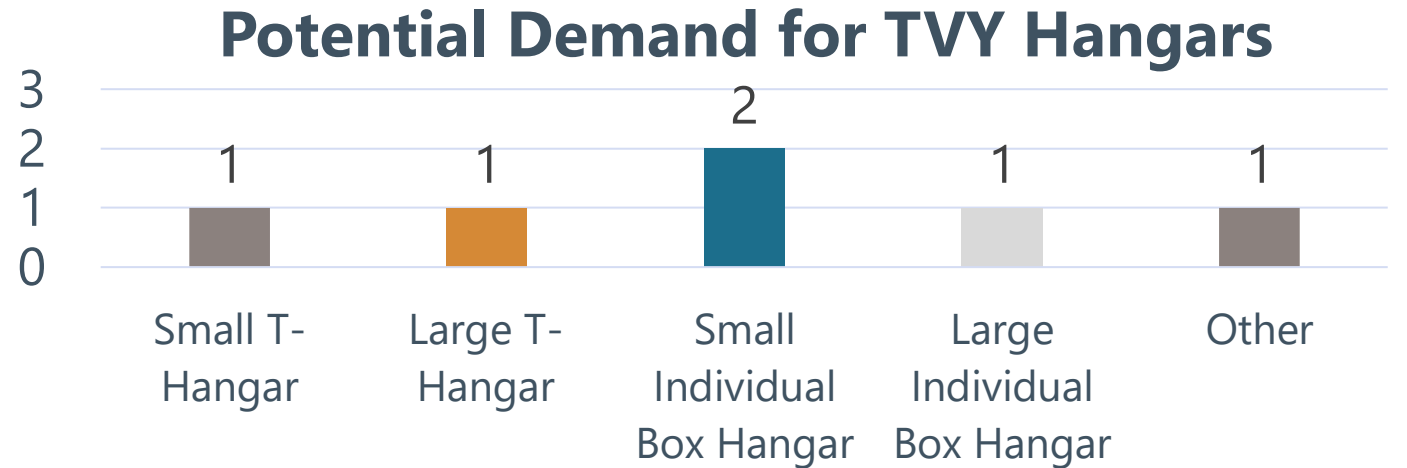
U42
hangars

53

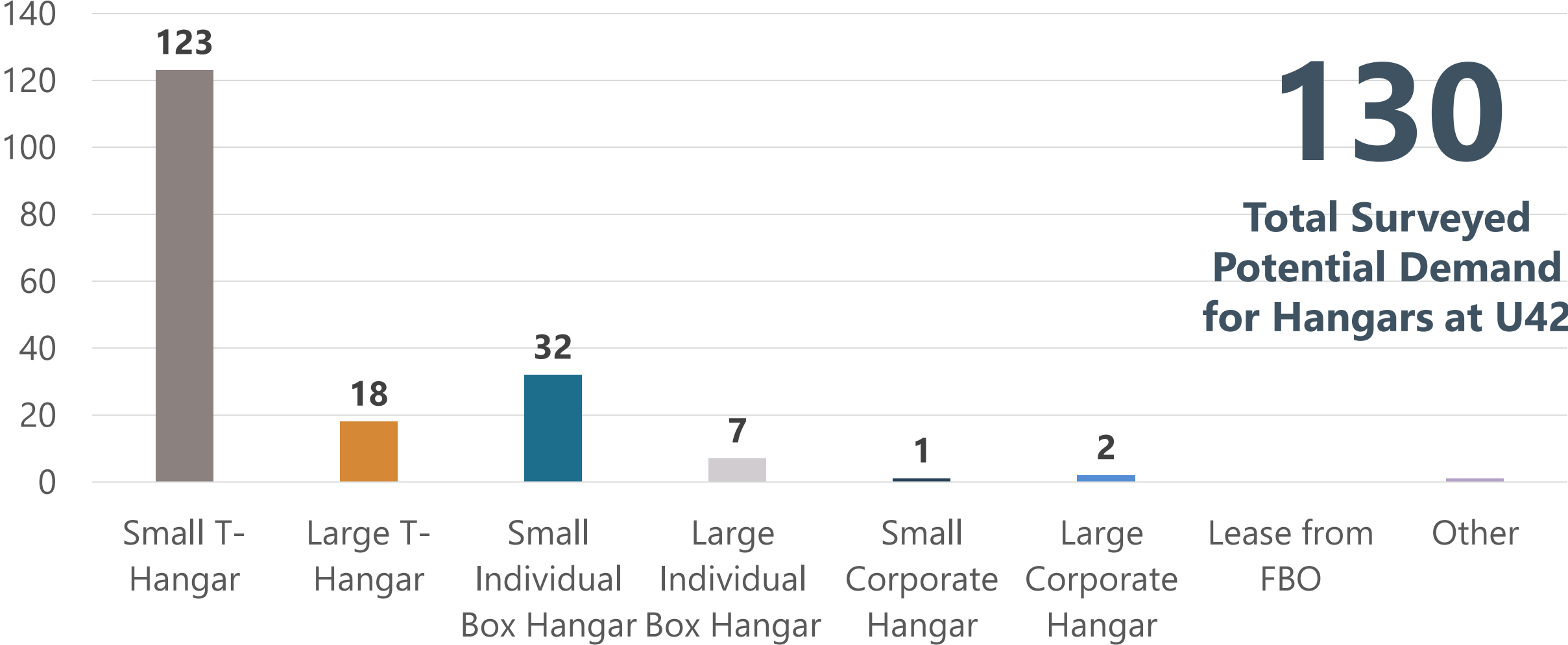
Number of
responses



5
TVY
hangars



U42 Potential Demand by Hangar Type



130
Total Surveyed
Potential Demand
for Hangars at U42

SALT LAKE CITY (SLC)

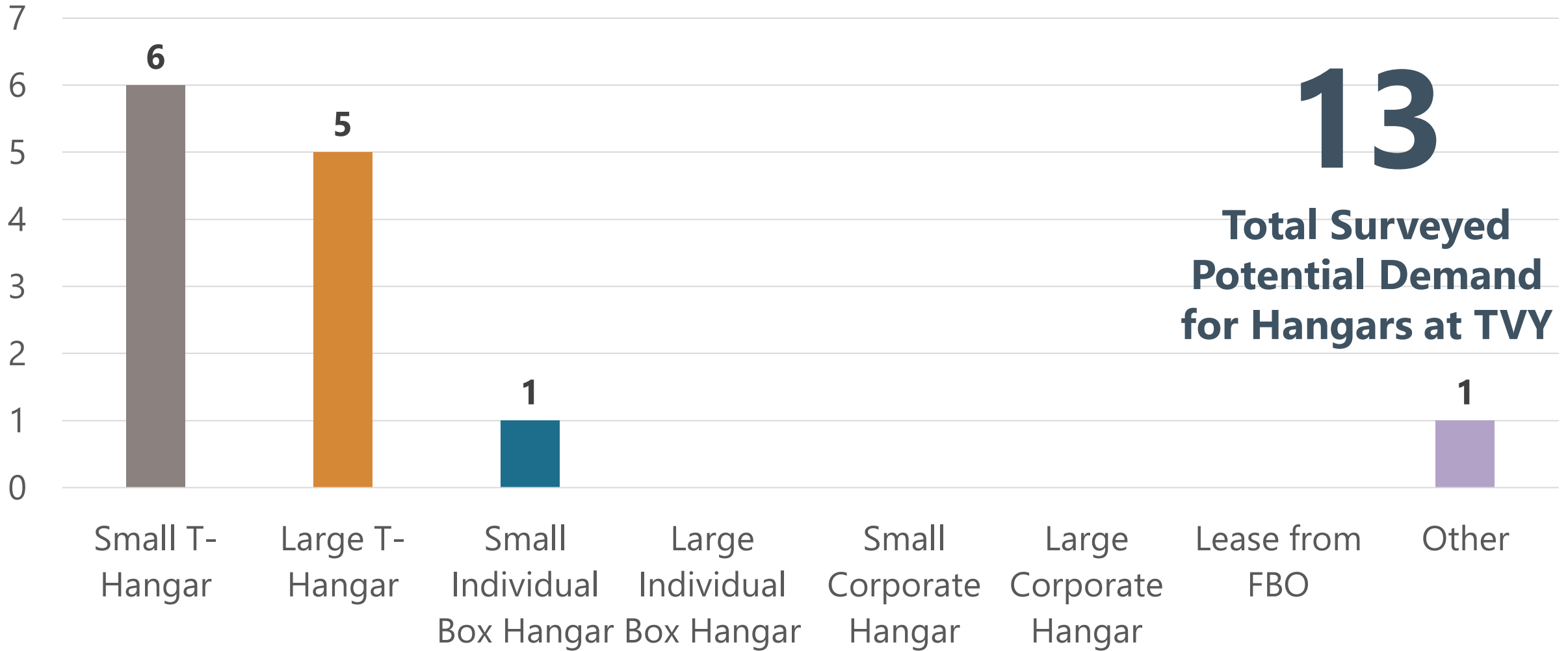
SOUTH VALLEY (U42)

TOOELE VALLEY (TVY)

NON-TENANT

SUMMARY

TVY Potential Demand by Hangar Type



SALT LAKE CITY (SLC)

SOUTH VALLEY (U42)

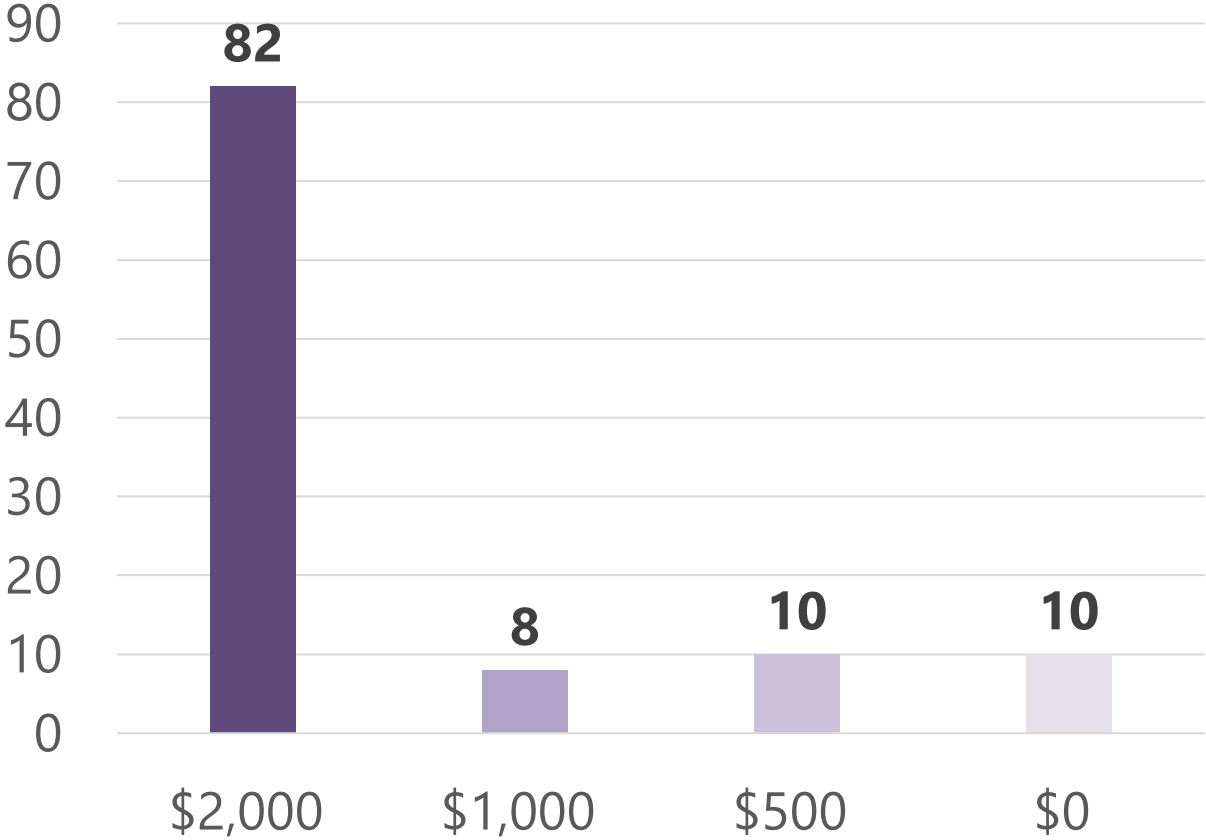
TOOELE VALLEY (TVY)

NON-TENANT

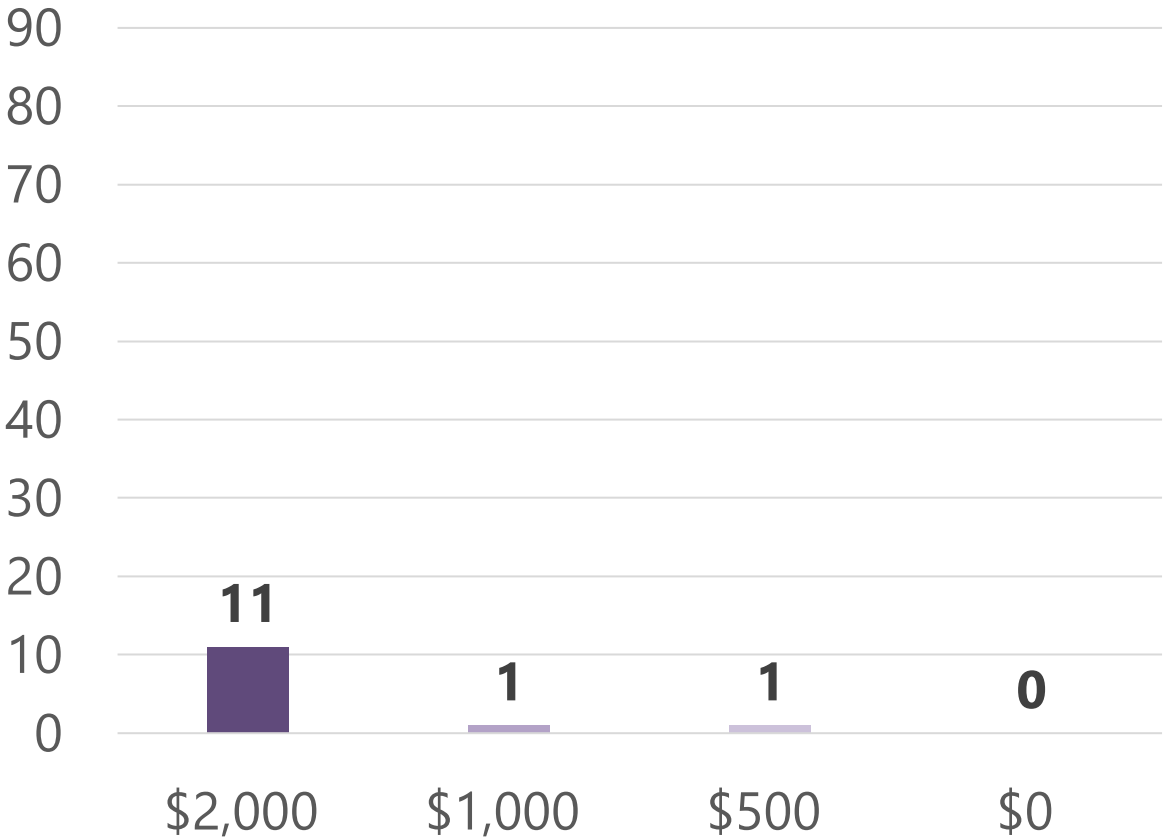
SUMMARY

Deposits by Airport

Responses for Hangars at U42



Responses for Hangars at TVY



SALT LAKE CITY (SLC)

SOUTH VALLEY (U42)

TOOELE VALLEY (TVY)

NON-TENANT

SUMMARY

U42 Based Aircraft Projections

Year		Single-Engine	Multi-Engine	Jet	Helicopter	Total
Inventory		190	12	1	3	206
Demand Survey Results		Plus 130 Hangars (1 AC/Hangar)				336
Scenario 1	+ 5 years	282	22	1	8	313
Scenario 1	+ 20 years	294	39	2	10	345
Scenario 2	+ 5 years	243	15	1	6	265
Scenario 2	+ 20 years	261	27	2	10	300

Data from survey validates GA Strategy Plan scenarios

TVY Based Aircraft Projections

Year		Single-Engine	Multi-Engine	Jet	Helicopter	Total
Inventory		20	0	0	0	20
Demand Survey Results		Plus 13 Hangars (1 AC/Hangar)				33
Scenario 1	+ 5 years	28	2	0	0	30
Scenario 1	+ 20 years	33	4	1	0	38
Scenario 2	+ 5 years	20	1	0	0	21
Scenario 2	+ 20 years	26	2	1	0	29

Data from survey validates GA Strategy Plan scenarios

Conclusions

- GA Strategy Plan scenarios validated
- Demand for hangars is present and strong at U42 and TVY



Next Steps

- » Finalize Forecast of Aviation Demand
 - Incorporate findings of GA Tenant Survey
- » Facility Requirements
- » Continue special emphasis studies
 - Airport GIS
 - Minimum standards
 - Utilities
 - Airspace
- » PAC/TAC/GASAC/Working group in person meetings
 - March/April timeframe

THANK YOU

ANY QUESTIONS?





Advisory Board
Meeting

February 16, 2022

Information

SALT LAKE CITY DEPARTMENT OF AIRPORTS
(An Enterprise Fund of Salt Lake City Corporation)
Statements of Net Position (Unaudited)
(Amounts in Thousands)

<i>As of December 31,</i>	2021	2020
ASSETS		
Current Assets		
Cash and cash equivalents	\$ 311,328	\$ 71,096
Restricted cash and cash equivalents	473,256	30,791
Restricted investments	30,290	21,021
Airline and rental fees receivable	28,195	22,771
Loans receivable	7,347	5,440
Other assets	7,153	(1,660)
Total current assets	857,569	149,459
Noncurrent Assets		
Restricted cash and cash equivalents	186,250	112,969
Restricted investments	129,956	61,040
Investments	1	921
Loans receivable	31,895	28,238
Other assets	2,948	877
Total noncurrent assets and investments	351,050	204,045
Capital assets		
Land	111,696	111,696
Building and improvements	3,445,892	1,419,993
Equipment	341,458	169,490
Construction in progress	526,871	2,669,135
Total capital assets - at cost	4,425,917	4,370,314
Less accumulated depreciation	912,430	1,109,403
Net capital assets	3,513,487	3,260,911
Total noncurrent assets	3,864,537	3,464,956
Total Assets	4,722,106	3,614,415
Deferred Outflows of Resources	4,413	4,521
Total Assets and Deferred Outflows of Resources	\$ 4,726,519	\$ 3,618,936

SALT LAKE CITY DEPARTMENT OF AIRPORTS
(An Enterprise Fund of Salt Lake City Corporation)
Statements of Net Position (Unaudited)
(Amounts in Thousands)

<i>As of December 31,</i>	2021	2020
LIABILITIES		
Current Liabilities		
Accounts payable	\$ 29,865	\$ 4,448
Accrued compensation	2,067	1,625
Interest payable	63,899	46,389
Other accrued liabilities	17,864	46,934
Current bonds payable	20,345	-
Total current liabilities	134,040	99,396
Noncurrent Liabilities		
Revenue bonds payable	3,149,935	2,036,540
Noncurrent compensation liability	4,360	3,801
Net pension liability	1,152	8,431
Other accrued liabilities	24,114	50,033
Total noncurrent liabilities	3,179,561	2,098,805
Total Liabilities	3,313,601	2,198,201
Deferred Inflows of Resources		
Deferred inflows - revenue collected in advance	6,592	5,897
Deferred inflows - pension	8,944	4,993
Total Deferred Inflows of Resources	15,536	10,890
NET POSITION		
Net investment in capital assets	1,125,777	1,393,893
Restricted for		
Capital projects	37,185	56,286
Debt service	323,659	176,227
Unrestricted	(89,239)	(216,561)
Net Position	1,397,382	1,409,845
Total Liabilities, Deferred Inflows of Resources, and Net Position	\$ 4,726,519	\$ 3,618,936

SALT LAKE CITY DEPARTMENT OF AIRPORTS**(An Enterprise fund of Salt Lake City Corporation)****Statements of Revenues, Expenses, and Changes in Fund Net Position (Unaudited)****(Amounts in Thousands)**

<i>for the Six month period ended December,</i>	2021	2020
Operating Revenues		
Airline revenue	\$ 82,662	\$ 56,410
Terminal concessions	11,210	3,393
Landside concessions	43,384	17,204
Lease revenue	4,596	3,505
General aviation	1,602	1,465
State aviation tax	1,531	521
Other revenue	2,660	2,443
Operating revenues	147,645	84,941
Less airline revenue sharing	(6,759)	(2,870)
Total operating revenues	140,886	82,071
Operating Expenses		
Salaries and benefits	27,469	25,559
Materials and supplies	5,546	3,378
Maintenance contracts	7,906	4,946
Charges and services	12,514	11,219
Utilities	2,877	2,028
Inter-governmental	8,512	7,449
Other expenses	3,201	2,912
Total operating expenses before depreciation	68,025	57,491
Operating Income Before Depreciation	72,861	24,580
Depreciation Expense	98,435	28,649
Operating Loss	(25,574)	(4,069)
Non-Operating Revenues (Expenses)		
Passenger facility charges	24,320	10,942
Customer facility charges	6,006	3,005
Interest income	1,080	781
Interest expense	(61,174)	(48,778)
Bond issuance costs	(4,150)	-
Contribution of capital assets	239	-
Other revenue (expenses), net	3,888	(36)
Net non-operating loss	(29,791)	(34,086)
Capital Contributions		
Contributions and grants	36,525	17,428
Total capital contributions	36,525	17,428
Net Position		
Decrease in net position	(18,841)	(20,727)
Net Position, beginning of period	1,416,222	1,430,572
Net Position, end of period	\$ 1,397,382	\$ 1,409,845

SALT LAKE CITY DEPARTMENT OF AIRPORTS

(An Enterprise fund of Salt Lake City Corporation)

OPERATING REVENUES AND EXPENDITURES TO BUDGET (Unaudited)

(Amounts in Thousands)

	Jul 2021 - Dec 2021 ACTUALS	Jul 2021 - Dec 2021 BUDGET	SURPLUS/ DEFICIT	PERCENT CHANGE
Revenues				
Landing Fees	\$ 32,086	\$ 28,600	\$ 3,486	12.2%
Fuel Farm	1,028	900	128	14.2%
Aircraft Remain Overnight Fees	260	227	33	14.5%
Cargo Bldg. & Ramp Use Fee	863	888	(25)	-2.8%
Security Charges to TSA	142	170	(28)	-16.7%
Extraordinary Service Charges	28	27	1	5.4%
Passenger Boarding Bridges	756	872	(116)	-13.3%
Tenant Telephone Fees	30	31	(1)	-2.0%
Terminal Rents	46,998	47,401	(403)	-0.8%
General Aviation Hangars	566	599	(33)	-5.5%
FBO Hangars/Fuel Oil Royalty	325	272	53	19.4%
Flight Kitchens	1,059	676	383	56.7%
Other Buildings & Office Space	2,908	2,953	(45)	-1.5%
Food Service & Vending	6,809	4,841	1,968	40.7%
News/Gift Shop	4,076	2,441	1,635	67.0%
Car Rental	17,238	13,256	3,982	30.0%
Leased Site Areas	2,227	1,940	287	14.8%
Auto Parking/Ground Transportation	26,122	16,084	10,038	62.4%
Advertising	326	125	201	160.7%
State Aviation Fuel Tax	1,531	990	541	54.7%
Military	100	78	22	27.5%
Glycol Recycling Sales	158	120	38	32.0%
Auxiliary Airport Fuel Sales	711	665	46	7.0%
Other	1,298	1,268	30	2.3%
Less: Airline Revenue Sharing	(6,759)	(1,188)	(5,571)	468.82%
Total Operating Revenues	140,886	124,236	16,650	13.4%
Expenses				
Salary & Wages	19,239	20,295	1,056	5.2%
Employee Benefits	8,823	9,035	212	2.4%
Maintenance Supplies	3,290	4,281	991	23.1%
Automotive Supplies	1,647	2,001	354	17.7%
Other Supplies	609	1,200	591	49.2%
Insurance Premiums	2,539	1,972	(567)	-28.7%
Janitorial Service	5,051	7,103	2,052	28.9%
Maintenance Contracts	2,856	3,738	882	23.6%
Other Contractual Services	5,320	8,064	2,744	34.0%
Professional & Tech Services	7,194	11,751	4,557	38.8%
Utilities	2,877	3,768	891	23.6%
Administrative Service Fee	1,318	766	(552)	-72.0%
Aircraft Rescue Fire Fighting	2,920	2,920	-	0.0%
Police Services	4,275	4,275	0	0.0%
Other Expenses	663	1,174	511	43.5%
Contingency Reserve	-	500	500	100.0%
Operating Expenses Before Capitalized Salaries	68,621	82,843	14,222	17.2%
Capitalized Salaries	596	596	-	0.0%
Total Operating Expenses	68,025	82,247	14,222	17.3%
Operating Income	\$ 72,861	\$ 41,989	\$ 30,872	73.5%

SALT LAKE CITY DEPARTMENT OF AIRPORTS

(An Enterprise fund of Salt Lake City Corporation)

OPERATING REVENUES AND EXPENDITURES TO PRIOR YEAR (Unaudited)

(Amounts in Thousands)

	Jul 2021 - Dec 2021	Jul 2020 - Dec 2020	DOLLAR CHANGE	PERCENT CHANGE
Revenues				
Landing Fees	\$ 32,086	\$ 24,058	\$ 8,028	33.4%
Fuel Farm	1,028	397	631	159.1%
Aircraft Remain Overnight Fees	260	227	33	14.5%
Cargo Bldg. & Ramp Use Fee	863	869	(6)	-0.7%
Security Charges to TSA	142	378	(236)	-62.6%
Extraordinary Service Charges	28	71	(43)	-60.7%
Passenger Boarding Bridges	756	665	91	13.7%
Tenant Telephone Fees	30	80	(50)	-61.9%
Terminal Rents	46,998	28,353	18,645	65.8%
General Aviation Hangars	566	621	(55)	-8.9%
FBO Hangars/Fuel Oil Royalty	325	254	71	27.8%
Flight Kitchens	1,059	468	591	126.3%
Other Buildings & Office Space	2,908	2,974	(66)	-2.2%
Food Service & Vending	6,809	2,265	4,544	200.6%
News/Gift Shops	4,076	947	3,129	330.4%
Car Rental	17,238	9,220	8,018	87.0%
Leased Site Areas	2,227	2,044	183	9.0%
Auto Parking/Ground Transportation	26,122	7,976	18,146	227.5%
Advertising	326	181	145	80.4%
State Aviation Fuel Tax	1,531	521	1,010	193.8%
Military	100	78	22	27.5%
Glycol Recycling Sales	158	117	41	34.9%
Auxiliary Airport Fuel Sales	711	590	121	20.5%
Other	1,298	1,587	(289)	-18.2%
Less: Airline Revenue Sharing	(6,759)	(2,870)	(3,889)	135.5%
Operating Revenues	140,886	82,071	58,815	71.7%
Expenses				
Salary & Wages	\$ 19,239	\$ 18,027	\$ 1,212	6.7%
Employee Benefits	8,823	8,142	681	8.4%
Maintenance Supplies	3,290	1,808	1,482	82.0%
Automotive Supplies	1,647	1,064	583	54.8%
Other Supplies	609	505	104	20.5%
Insurance Premiums	2,539	2,520	19	0.7%
Janitorial Service	5,051	4,161	890	21.4%
Maintenance Contracts	2,856	785	2,071	263.8%
Other Contractual Services	5,320	4,921	399	8.1%
Professional & Tech Service	7,194	6,298	896	14.2%
Utilities	2,877	2,028	849	41.9%
Administrative Service Fee	1,318	668	650	97.3%
Aircraft Rescue Fire Fighting	2,920	2,631	289	11.0%
Police Services	4,275	4,150	125	3.0%
Other Expenses	663	392	271	69.1%
Operating Expenses Before Capitalized Salaries	68,621	58,100	10,521	18.1%
Capitalized Salaries	596	609	(13)	-2.1%
Total Operating Expenses	68,025	57,491	10,534	18.3%
Operating Income	\$ 72,861	\$ 24,580	\$ 48,281	196.4%

SALT LAKE CITY DEPARTMENT OF AIRPORTS
(An Enterprise fund of Salt Lake City Corporation)
Statements of Cash Flows (Unaudited)
(Amounts in Thousands)

<i>for the month ended December 31,</i>	2021	2020
Cash Flows from Operating Activities		
Cash received from providing services	\$ 150,960	\$ 83,868
Cash paid for services for intra-governmental charges	(2,207)	(2,631)
Cash paid to suppliers	(43,597)	(35,587)
Cash paid to employees	(27,027)	(25,283)
Net cash from operating activities	78,128	20,368
Cash Flows from Investing Activities		
Cash paid for investments	(192,474)	(187,953)
Cash proceeds from investments	130,074	316,915
Interest received on investments and concession loans	796	1,465
Payments for concession loans	(1,345)	(33,678)
Payments received on concession loans	7,350	-
Net cash from investing activities	(55,599)	96,749
Cash Flows from Capital and Related Financing Activities		
Purchase of capital equipment	(1,856)	(5,057)
Payments for acquisition and construction of capital assets	(253,283)	(350,536)
Proceeds from issuance of revenue bonds payable	1,139,949	-
Payment for capital assets contributed to TSA	(239)	-
Payment on line of credit	(268,094)	-
Interest paid on bonds and line of credit	(46,389)	(46,389)
Bond issuance costs	(1,418)	-
Passenger facility charges	24,693	9,258
Customer facility charges	7,486	4,239
Proceeds from sale of capital assets and equipment	70	(77)
Contributions and grants	54,593	30,783
Other financing	-	41
Net cash used for capital and related financing activities	655,512	(357,737)
Net (Decrease) in Cash and Cash Equivalents	678,041	(240,620)
Cash and Cash Equivalents - Beginning of Year	292,793	455,477
Cash and Cash Equivalents - End of Year	\$ 970,834	\$ 214,856

SALT LAKE CITY DEPARTMENT OF AIRPORTS
(An Enterprise fund of Salt Lake City Corporation)
Statements of Cash Flows (Unaudited)
(Amounts in Thousands)

<i>for the Six month period ended December,</i>	2021	2020
Reconciliation of Operating Income to Net		
Cash from Operating Activities		
Operating loss	\$ (25,574)	\$ (4,069)
Adjustments to reconcile operating loss to net cash from operating activities		
Depreciation	98,435	28,649
Changes in assets and liabilities		
Airline and rental fee receivable	19,197	11,628
Other assets	832	(7,154)
Deferred outflows	-	-
Accounts payable	(12,205)	(9,155)
Accrued compensation	-	-
Other accrued liabilities	(1,942)	(266)
Deferred inflows	(686)	742
Deposits and advance rentals	71	(7)
Net cash from operating activities	78,128	20,368
Schedule of Non-cash Transactions Affecting Net Position		
Contributions and grants	(18,067)	(13,355)
Passenger facility charges (includes interest)	(3,843)	1
Customer facility charges (includes interest)	(2,465)	(1,824)
Bond issuance costs	(3,361)	-
Contributions of capital assets	(239)	-
Total Noncash Transactions Affecting Net Position	\$ (27,976)	\$ (15,179)



**SALT LAKE CITY INTERNATIONAL AIRPORT
AIR TRAFFIC STATISTICS AND ACTIVITY REPORT
TWELVE MONTHS ENDED DECEMBER 2021**

	December 2021	CHANGE	YTD 2021	CHANGE	12 MO ROLLING Ending 12/2021	CHANGE
PASSENGERS						
<i>DOMESTIC</i>						
Enplaned - Local	666,912	86.92%	7,046,285	75.53%	7,046,285	75.53%
Enplaned - Connections	338,974	84.84%	4,135,655	82.09%	4,135,655	82.09%
Less International Enplaned	-33,282		-290,663		-290,663	
	972,604	86.19%	10,891,277	77.80%	10,891,277	77.80%
Deplaned - Local	692,974	86.27%	7,061,394	76.43%	7,061,394	76.43%
Deplaned - Connection	338,974	84.84%	4,135,655	82.09%	4,135,655	82.09%
Less International Deplaned	-32,014		-293,031		-293,031	
	999,934	85.32%	10,904,018	78.69%	10,904,018	78.69%
TOTAL DOMESTIC	1,972,538	85.75%	21,795,295	78.25%	21,795,295	78.25%
<i>INTERNATIONAL</i>						
Enplaned	33,282	86.94%	290,663	81.68%	290,663	81.68%
Deplaned	32,014	102.12%	293,031	70.94%	293,031	70.94%
TOTAL INTERNATIONAL	65,296	94.08%	583,694	76.12%	583,694	76.12%
TOTAL PASSENGERS	2,037,834	86.00%	22,378,989	78.19%	22,378,989	78.19%
LANDED WEIGHT						
Air Carriers	1,163,371,934	11.55%	14,617,723,463	37.29%	14,617,723,463	37.29%
Cargo Carriers	171,954,148	-2.90%	1,331,114,541	-0.38%	1,331,114,541	-0.38%
TOTAL LANDED WEIGHT (LBS)	1,335,326,082	9.45%	15,948,838,004	33.09%	15,948,838,004	33.09%
MAIL						
Enplaned	2,078,751	46.48%	33,670,240	0.37%	33,670,240	0.37%
Deplaned	1,520,229	46.14%	16,901,496	-16.54%	16,901,496	-16.54%
TOTAL MAIL (LBS)	3,598,980	46.34%	50,571,736	-5.99%	50,571,736	-5.99%
CARGO						
Enplaned	21,316,273	-10.28%	207,933,066	-1.34%	207,933,066	-1.34%
Deplaned	21,948,494	0.40%	204,603,053	-2.24%	204,603,053	-2.24%
TOTAL CARGO (LBS)	43,264,767	-5.16%	412,536,119	-1.79%	412,536,119	-1.79%
MAIL & CARGO						
Enplaned	10,658	-10.28%	103,967	-1.34%	103,967	-1.34%
Deplaned	10,974	0.40%	102,302	-2.24%	102,302	-2.24%
TOTAL MAIL & CARGO (TONS)	21,632	-5.16%	206,269	-1.79%	206,269	-1.79%
AIRCRAFT OPERATIONS						
Passenger Aircraft	19,530	5.85%	249,018	32.52%	249,018	32.52%
All-Cargo Aircraft	2,290	-1.46%	20,824	0.57%	20,824	0.57%
General Aviation	6,039	10.62%	69,842	7.23%	69,842	7.23%
Military	174	-20.55%	2,835	-4.99%	2,835	-4.99%
TOTAL AIRCRAFT OPERATIONS	28,033	5.98%	342,519	23.77%	342,519	23.77%

**SALT LAKE CITY INTERNATIONAL AIRPORT
PASSENGER TRAFFIC REPORT
TWELVE MONTHS ENDED DECEMBER 2021**

	December 2020	December 2021	% CHANGE	YTD 2020	YTD 2021	% CHANGE	12 MO ROLLING Ending 12/2021	% CHANGE
ENPLANED PASSENGERS								
AEROMEXICO	-	2,876	100.0%	11,436	5,692	-50.2%	5,692	-50.2%
ALASKA	1,137	10,062	785.0%	48,209	111,955	132.2%	111,955	132.2%
Horizon Air / Alaska	1,908	1,119	-41.4%	11,866	25,738	116.9%	25,738	116.9%
Skywest / Alaska	7,708	11,708	51.9%	79,324	142,447	79.6%	142,447	79.6%
AMERICAN	30,981	47,759	54.2%	342,342	564,912	65.0%	564,912	65.0%
Compass	-	-	0.0%	6,563	-	-100.0%	-	-100.0%
Envoy Air	-	1,940	100.0%	733	25,750	3413.0%	25,750	3413.0%
American/Mesa Air	103	159	54.4%	921	10,842	1077.2%	10,842	1077.2%
Republic	-	-	0.0%	816	5,201	537.4%	5,201	537.4%
SkyWest (American)	6,693	6,712	0.3%	62,027	93,333	50.5%	93,333	50.5%
DELTA	284,615	580,077	103.8%	3,382,631	6,213,734	83.7%	6,213,734	83.7%
SkyWest (Delta Connection)	102,351	159,468	55.8%	1,142,707	1,927,118	68.6%	1,927,118	68.6%
FRONTIER	16,863	16,548	-1.9%	145,038	231,296	59.5%	231,296	59.5%
JETBLUE	7,005	17,365	147.9%	116,597	195,084	67.3%	195,084	67.3%
SOUTHWEST	53,437	106,250	98.8%	629,305	1,124,163	78.6%	1,124,163	78.6%
UNITED	9,626	14,917	55.0%	133,865	189,873	41.8%	189,873	41.8%
Express Jet	-	-	0.0%	600	-	-100.0%	-	-100.0%
Mesa Airlines (United Express)	97	952	881.4%	5,747	10,115	76.0%	10,115	76.0%
Republic Airways (United)	589	435	-26.1%	2,542	4,194	65.0%	4,194	65.0%
SkyWest (United Express)	17,058	27,539	61.4%	161,928	300,266	85.4%	300,266	85.4%
Charters	-	-	0.0%	255	227	-11.0%	227	-11.0%
West Coast Charters	-	0	0.0%	-	0	0.0%	0	0.0%
TOTAL ENPLANED PASSENGERS	540,171	1,005,886	86.2%	6,285,452	11,181,940	77.9%	11,181,940	77.9%
DEPLANED PASSENGERS								
AeroMexico	-	3,437	100.0%	11,393	6,637	-41.7%	6,637	-41.7%
ALASKA AIR	979	9,985	919.9%	46,574	114,228	145.3%	114,228	145.3%
Horizon Air / Alaska	1,941	1,035	-46.7%	12,015	25,774	114.5%	25,774	114.5%
Skywest / Alaska	7,944	12,741	60.4%	82,709	141,241	70.8%	141,241	70.8%
AMERICAN	32,022	49,198	53.6%	334,993	568,968	69.8%	568,968	69.8%
Compass	-	-	0.0%	6,494	-	-100.0%	-	-100.0%
Envoy Air (American)	-	1,831	100.0%	722	25,152	3383.7%	25,152	3383.7%
Mesa Air	120	159	32.5%	997	10,541	957.3%	10,541	957.3%
Republic	-	-	0.0%	766	4,901	539.8%	4,901	539.8%
SkyWest (American)	7,427	6,816	-8.2%	62,902	93,543	48.7%	93,543	48.7%
DELTA	292,571	598,888	104.7%	3,389,508	6,220,143	83.5%	6,220,143	83.5%
SkyWest (Delta Connection)	102,739	158,744	54.5%	1,138,216	1,925,777	69.2%	1,925,777	69.2%
FRONTIER	17,105	16,892	-1.2%	146,898	233,004	58.6%	233,004	58.6%
JETBLUE	7,676	18,371	139.3%	118,974	192,056	61.4%	192,056	61.4%
SOUTHWEST	54,456	108,185	98.7%	619,382	1,116,846	80.3%	1,116,846	80.3%
UNITED	12,082	15,196	25.8%	131,167	192,917	47.1%	192,917	47.1%
Express Jet	-	-	0.0%	582	-	-100.0%	-	-100.0%
Mesa Airlines / United Express	113	959	748.7%	5,710	11,555	102.4%	11,555	102.4%
Republic Airways (United)	765	383	-49.9%	2,802	4,019	43.4%	4,019	43.4%
SkyWest (United Express)	17,484	29,127	66.6%	160,579	309,394	92.7%	309,394	92.7%
Charters	-	1	100.0%	191	353	84.8%	353	84.8%
West Coast Charters	-	-	0.0%	-	-	0.0%	-	0.0%
TOTAL DEPLANED PASSENGERS	555,424	1,031,948	85.8%	6,273,574	11,197,049	78.5%	11,197,049	78.5%
TOTAL PASSENGERS*	1,095,595	2,037,834	86.0%	12,559,026	22,378,989	78.2%	22,378,989	78.2%
INTERNATIONAL - ENPLANED								
AEROMEXICO	-	2,876	100.0%	11,436	5,692	-50.2%	5,692	-50.2%
DELTA	17,804	28,583	60.5%	142,728	280,700	96.7%	280,700	96.7%
SkyWest (Delta Connection)	-	1,823	100.0%	5,736	4,269	-25.6%	4,269	-25.6%
KLM ROYAL DUTCH AIRLINES	-	-	0.0%	-	-	0.0%	-	0.0%
Charters	-	-	0.0%	82	-	-100.0%	-	-100.0%
TOTAL ENPLANED INTERNATIONAL	17,804	33,282	86.9%	159,982	290,661	81.7%	290,661	81.7%
INTERNATIONAL - DEPLANED								
AEROMEXICO	-	3,437	100.0%	11,393	6,637	-41.7%	6,637	-41.7%
DELTA	15,839	26,972	70.3%	150,745	282,112	87.1%	282,112	87.1%
SkyWest (Delta Connection)	-	1,605	100.0%	9,289	4,280	-53.9%	4,280	-53.9%
KLM ROYAL DUTCH AIRLINES	-	-	0.0%	-	-	0.0%	-	0.0%
Charters	-	-	0.0%	-	-	0.0%	-	0.0%
TOTAL DEPLANED INTERNATIONAL	15,839	32,014	102.1%	171,427	293,029	70.9%	293,029	70.9%
TOTAL INTERNATIONAL PASSENGERS	33,643	65,296	94.1%	331,409	583,690	76.1%	583,690	76.1%

*Includes International

**SALT LAKE CITY INTERNATIONAL AIRPORT
TWELVE MONTHS ENDED DECEMBER 2021
Based on Total Enplanements**

MARKET SHARE

	December 2020	MARKET SHARE	December 2021	MARKET SHARE	YTD 2020	MARKET SHARE	YTD 2021	MARKET SHARE	12 MO ROLLING Ending 12/2020	12 MO ROLLING Ending 12/2021	MARKET SHARE
AEROMEXICO	-	0.00%	2,876	0.29%	11,436	0.18%	5,692	0.05%	11,436	5,692	0.05%
ALASKA	10,753	1.99%	22,889	2.28%	139,399	2.22%	280,140	2.51%	139,399	280,140	2.51%
AMERICAN	37,777	6.99%	56,570	5.62%	413,402	6.58%	700,038	6.26%	413,402	700,038	6.26%
DELTA	386,966	71.64%	739,545	73.52%	4,525,338	72.00%	8,140,852	72.80%	4,525,338	8,140,852	72.80%
FRONTIER	16,863	3.12%	16,548	1.65%	145,038	2.31%	231,296	2.07%	145,038	231,296	2.07%
JETBLUE	7,005	1.30%	17,365	1.73%	116,597	1.86%	195,084	1.74%	116,597	195,084	1.74%
SOUTHWEST	53,437	9.89%	106,250	10.56%	629,305	10.01%	1,124,163	10.05%	629,305	1,124,163	10.05%
UNITED	27,370	5.07%	43,843	4.36%	304,682	4.85%	504,448	4.51%	304,682	504,448	4.51%
Charters	-	0.00%	-	0.00%	255	0.00%	227	0.00%	255	227	0.00%
TOTAL ENPLANEMENTS	540,171	100%	1,005,886	100%	6,285,452	100%	11,181,940	100%	6,285,452	11,181,940	100%

PERCENT CHANGE YOY

	December 2020	December 2021	PERCENT CHANGE	YTD 2020	YTD 2021	PERCENT CHANGE	12 MO ROLLING Ending 12/2020	12 MO ROLLING Ending 12/2021	PERCENT CHANGE
AEROMEXICO	-	2,876	100.00%	11,436	5,692	100.00%	11,436	5,692	-50.23%
ALASKA	10,753	22,889	112.86%	139,399	280,140	100.96%	139,399	280,140	100.96%
AMERICAN	37,777	56,570	49.75%	413,402	700,038	69.34%	413,402	700,038	69.34%
DELTA	386,966	739,545	91.11%	4,525,338	8,140,852	79.89%	4,525,338	8,140,852	79.89%
FRONTIER	16,863	16,548	-1.87%	145,038	231,296	59.47%	145,038	231,296	59.47%
JETBLUE	7,005	17,365	147.89%	116,597	195,084	67.31%	116,597	195,084	67.31%
SOUTHWEST	53,437	106,250	98.83%	629,305	1,124,163	78.64%	629,305	1,124,163	78.64%
UNITED	27,370	43,843	60.19%	304,682	504,448	65.57%	304,682	504,448	65.57%
Charters	-	-	#DIV/0!	255	227	-10.98%	255	227	-10.98%
TOTAL ENPLANEMENTS	540,171	1,005,886	86.2%	6,285,452	11,181,940	77.9%	6,285,452	11,181,940	77.9%

**SALT LAKE CITY INTERNATIONAL AIRPORT
LANDING ACTIVITY
TWELVE MONTHS ENDED DECEMBER 2021**

	December 2020	December 2021	CHANGE	YTD 2020	YTD 2021	CHANGE	12 MO ROLLING Ending 12/2021	% CHANGE
TOTAL NUMBER OF LANDINGS								
SCHEDULED CARRIERS								
AEROMEXICO	-	31	100.0%	109	61	-44.0%	61	-44.0%
ALASKA	21	87	314.3%	464	939	102.4%	939	102.4%
Horizon Air / Alaska	47	15	-68.1%	256	471	84.0%	471	84.0%
Skywest / Alaska	201	197	-2.0%	1,861	2,549	37.0%	2,549	37.0%
AMERICAN	223	300	34.5%	2,711	3,977	46.7%	3,977	46.7%
Compass (American)	-	-	0.0%	102	-	-100.0%	-	-100.0%
Mesa Air (American)	2	2	0.0%	16	167	943.8%	167	943.8%
Envoy Air (American)	-	28	100.0%	14	377	2592.9%	377	2592.9%
Republic/ (American)	-	-	0.0%	12	37	208.3%	37	208.3%
SkyWest (American)	145	109	-24.8%	1,269	1,763	38.9%	1,763	38.9%
DELTA	3,798	4,180	10.1%	38,329	50,454	31.6%	50,454	31.6%
SkyWest (Delta Connection)	3,399	2,792	-17.9%	32,699	40,437	23.7%	40,437	23.7%
Compass (Delta Connection)	-	-	0.0%	1	-	-100.0%	-	-100.0%
FRONTIER	127	105	-17.3%	1,107	1,642	48.3%	1,642	48.3%
JETBLUE	85	137	61.2%	1,229	1,696	38.0%	1,696	38.0%
SOUTHWEST	464	825	77.8%	6,994	9,512	36.0%	9,512	36.0%
UNITED	118	108	-8.5%	1,183	1,607	35.8%	1,607	35.8%
GoJet	-	-	0.0%	-	-	0.0%	-	0.0%
Express Jet	-	-	0.0%	10	-	-100.0%	-	-100.0%
Mesa / United Express	2	13	550.0%	100	293	193.0%	293	193.0%
Republic Airways Holdings	12	6	-50.0%	44	63	43.2%	63	43.2%
SkyWest (United Express)	352	478	35.8%	3,225	5,377	66.7%	5,377	66.7%
Trans States	-	-	0.0%	-	-	0.0%	-	0.0%
SUBTOTAL SCHEDULED CARRIERS:	8,996	9,413	4.6%	91,735	121,422	32.4%	121,422	32.4%
CHARTER CARRIERS								
ALLEGIAN AIR	-	-	0.0%	-	-	0.0%	-	0.0%
BOMBARDIER BUSINESS JETS	62	76	22.6%	512	679	32.6%	679	32.6%
BOUTIQUE AIR	-	-	0.0%	-	-	0.0%	-	0.0%
DELTA PRIVATE JETS	-	-	0.0%	-	-	0.0%	-	0.0%
EXECUTIVE JET MANAGEMENT	-	-	0.0%	-	-	0.0%	-	0.0%
FLIGHT OPTIONS	-	-	0.0%	-	-	0.0%	-	0.0%
KALITTA CHARTERS	7	6	-14.3%	66	79	19.7%	79	19.7%
KEYLIME AIR	-	-	0.0%	2	4	100.0%	4	100.0%
NETJETS	167	234	40.1%	1,485	2,196	47.9%	2,196	47.9%
SUNSET AVIATION	-	-	0.0%	-	-	0.0%	-	0.0%
SWIFT AIR	-	-	0.0%	-	-	0.0%	-	0.0%
VIRGIN AMERICA	-	-	0.0%	-	-	0.0%	-	0.0%
XOJET	-	39	100.0%	213	196	-8.0%	196	-8.0%
OTHER CHARTER	-	2	100.0%	5	12	140.0%	12	140.0%
SUBTOTAL CHARTER CARRIERS:	236	357	51.3%	2,283	3,166	38.7%	3,166	38.7%
CARGO CARRIERS								
AERO CHARTER & TRANSPORT	-	-	0.0%	-	-	0.0%	-	0.0%
AIRNET 11 LLC	-	8	100.0%	-	61	100.0%	61	100.0%
ALPINE AVIATION	151	245	62.3%	2,056	2,307	12.2%	2,307	12.2%
AMERIFLIGHT	178	24	-86.5%	1,488	993	-33.3%	993	-33.3%
AMERIJET INTERTIONAL	-	17	100.0%	-	29	100.0%	29	100.0%
CORPORATE AIR (BILLINGS)	156	156	0.0%	1,428	1,667	16.7%	1,667	16.7%
EMPIRE	20	21	5.0%	190	217	14.2%	217	14.2%
FEDERAL EXPRESS	231	203	-12.1%	1,918	1,824	-4.9%	1,824	-4.9%
GEM AIR	115	131	13.9%	714	763	6.9%	763	6.9%
NORTHERN AIR CARGO	-	26	100.0%	-	170	100.0%	170	100.0%
SOUTHERN AIR	-	-	0.0%	137	-	-100.0%	-	-100.0%
UPS	274	250	-8.8%	2,048	1,942	-5.2%	1,942	-5.2%
WESTERN AIR EXPRESS	28	53	89.3%	287	344	19.9%	344	19.9%
OTHER CARGO	2	6	200.0%	22	16	-27.3%	16	-27.3%
SUBTOTAL CARGO CARRIERS:	1,155	1,140	-1.3%	10,288	10,333	0.4%	10,333	0.4%
TOTAL LANDINGS	10,387	10,910	5.0%	104,306	134,921	29.4%	134,921	29.4%
TOTAL LANDED WEIGHT								
SCHEDULED CARRIERS								
AEROMEXICO	-	2,938,738	100.0%	10,355,000	5,782,678	-44.2%	5,782,678	-44.2%
ALASKA	3,116,600	13,534,014	334.3%	70,390,124	143,035,508	103.2%	143,035,508	103.2%
Horizon Air / Alaska	3,522,979	1,124,355	-68.1%	19,188,992	35,304,747	84.0%	35,304,747	84.0%
Skywest / Alaska	15,066,357	14,766,529	-2.0%	139,494,977	191,065,393	37.0%	191,065,393	37.0%
AMERICAN	35,324,044	47,306,982	33.9%	404,366,302	643,678,528	59.2%	643,678,528	59.2%
Compass	-	-	0.0%	7,644,900	-	-100.0%	-	-100.0%
Envoy Air (American)	-	2,098,600	100.0%	1,049,300	28,250,870	2592.4%	28,250,870	2592.4%
American/Mesa Air	150,200	147,000	-2.1%	1,193,600	12,356,110	935.2%	12,356,110	935.2%
Republic (American)	-	-	0.0%	899,400	2,773,150	208.3%	2,773,150	208.3%
SkyWest (American)	9,715,000	7,390,450	-23.9%	85,023,000	119,413,950	40.4%	119,413,950	40.4%
DELTA	610,666,227	677,172,850	10.9%	5,985,300,348	8,249,645,183	37.8%	8,249,645,183	37.8%
SkyWest (Delta Connection)	226,602,714	188,926,744	-16.6%	2,199,144,507	2,686,260,383	22.2%	2,686,260,383	22.2%
Compass (Delta Connection)	-	-	0.0%	75,177	-	-100.0%	-	-100.0%
FRONTIER	18,352,346	16,631,350	-9.4%	157,292,676	244,764,942	55.6%	244,764,942	55.6%
JETBLUE	12,087,000	19,481,400	61.2%	174,763,800	241,171,200	38.0%	241,171,200	38.0%

**SALT LAKE CITY INTERNATIONAL AIRPORT
LANDING ACTIVITY
TWELVE MONTHS ENDED DECEMBER 2021**

	December 2020	December 2021	CHANGE	YTD 2020	YTD 2021	CHANGE	12 MO ROLLING Ending 12/2021	% CHANGE
SCHEDULED CARRIERS								
SOUTHWEST	60,464,000	111,905,600	85.1%	920,768,000	1,285,732,800	39.6%	1,285,732,800	39.6%
UNITED	16,818,380	15,528,820	-7.7%	168,210,960	227,326,060	35.1%	227,326,060	35.1%
GoJet	-	-	0.0%	-	-	0.0%	-	0.0%
Express Jet	-	-	0.0%	750,000	-	-100.0%	-	-100.0%
Mesa / United Express	150,000	975,000	550.0%	7,500,000	21,975,000	193.0%	21,975,000	193.0%
Republic Airways Holdings	878,400	444,600	-49.4%	3,197,386	4,667,961	46.0%	4,667,961	46.0%
SkyWest (United Express)	22,983,572	31,091,379	35.3%	220,375,238	374,799,688	70.1%	374,799,688	70.1%
Trans States	-	-	0.0%	-	-	0.0%	-	0.0%
SUBTOTAL SCHEDULED CARRIERS:	1,035,897,819	1,151,464,411	11.2%	10,576,983,687	14,518,004,151	37.3%	14,518,004,151	37.3%
CHARTER CARRIERS								
ALLEGIAN AIR	-	-	0.0%	-	-	0.0%	-	0.0%
BOEING COMMERCIAL AIRPLANE	-	163,900	100.0%	-	163,900	100.0%	163,900	100.0%
BOMBARDIER	2,036,084	2,805,293	37.8%	17,003,405	22,913,314	34.8%	22,913,314	34.8%
BOUTIQUE AIR	-	-	0.0%	-	-	0.0%	-	0.0%
DELTA PRIVATE JETS	-	-	0.0%	-	-	0.0%	-	0.0%
EXECUTIVE JET MANAGEMENT	-	-	0.0%	-	-	0.0%	-	0.0%
FLIGHT OPTIONS	-	-	0.0%	-	-	0.0%	-	0.0%
KALITTA CHARTERS	496,300	253,850	-48.9%	1,686,540	2,351,960	39.5%	2,351,960	39.5%
KEYLIME AIR	-	-	0.0%	63,448	131,526	107.3%	131,526	107.3%
MIAMI AIR	-	-	0.0%	438,900	-	-100.0%	-	-100.0%
NETJETS	5,013,651	7,271,630	45.0%	44,602,240	68,240,632	53.0%	68,240,632	53.0%
SIERRA PACIFIC	-	-	0.0%	220,000	330,000	50.0%	330,000	50.0%
SUN COUNTRY	-	-	0.0%	-	-	0.0%	-	0.0%
SWIFT AIR	-	-	0.0%	-	-	0.0%	-	0.0%
VIRGIN AMERICA	-	-	0.0%	-	-	0.0%	-	0.0%
XOJET	-	1,514,100	100.0%	7,855,200	7,694,850	-2.0%	7,694,850	-2.0%
OTHER CHARTER	-	-	0.0%	-	-	0.0%	-	0.0%
SUBTOTAL CHARTER CARRIERS:	7,546,035	12,008,773	59.1%	71,869,733	101,826,182	41.7%	101,826,182	41.7%
CARGO CARRIERS								
ABX AIR INC	-	566,000	100.0%	-	1,937,000	-	1,937,000	100.0%
AIRNET 11	-	125,900	100.0%	-	947,300	100.0%	947,300	100.0%
ALPINE AVIATION	2,306,300	3,471,300	50.5%	28,957,200	32,129,900	11.0%	32,129,900	11.0%
AMERIFLIGHT	2,235,400	386,400	-82.7%	21,083,950	13,436,776	-36.3%	13,436,776	-36.3%
AMERJET INTERNATIONAL	-	4,624,000	100.0%	-	7,888,000	100.0%	7,888,000	100.0%
AMERISTAR	-	326,800	100.0%	299,700	381,400	27.3%	381,400	27.3%
ATLAS AIR	544,000	-	-100.0%	4,981,000	870,000	-82.5%	870,000	-82.5%
CORPORATE AIR (BILLINGS)	1,326,000	1,326,000	0.0%	12,138,000	14,169,500	16.7%	14,169,500	16.7%
EMPIRE	941,360	988,428	5.0%	7,284,144	9,454,185	29.8%	9,454,185	29.8%
FEDEX EXPRESS	77,176,000	69,604,000	-9.8%	639,260,100	624,907,800	-2.2%	624,907,800	-2.2%
GEM AIR	949,000	1,055,000	11.2%	5,986,500	6,388,000	6.7%	6,388,000	6.7%
NORTHERN AIR CARGO	-	3,146,000	100.0%	-	20,570,000	100.0%	20,570,000	100.0%
SOUTHERN AIR INC	-	-	0.0%	16,634,980	-	-100.0%	-	-100.0%
UPS	90,757,300	85,526,080	-5.8%	594,097,040	591,367,320	-0.5%	591,367,320	-0.5%
WESTERN AIR EXPRESS	357,200	707,000	97.9%	3,736,200	4,560,500	22.1%	4,560,500	22.1%
OTHER CARGO	-	(10)	100.0%	-	(10)	100.0%	(10)	100.0%
SUBTOTAL CARGO CARRIERS:	176,592,560	171,852,898	-2.7%	1,334,458,814	1,329,007,671	-0.4%	1,329,007,671	-0.4%
TOTAL LANDED WEIGHT	1,220,036,414	1,335,326,082	9.4%	11,983,312,234	15,948,838,004	33.1%	15,948,838,004	33.1%

**SALT LAKE CITY INTERNATIONAL AIRPORT
CARGO ACTIVITY REPORT
TWELVE MONTHS ENDED DECEMBER 2021**

	December 2020	December 2021	CHANGE	YTD 2020	YTD 2021	CHANGE	12 MO ROLLING Ending 12/2021	% CHANGE
ENPLANED CARGO								
PASSENGER CARRIERS								
ALASKA	8,488	4,975	-41.39%	113,252	98,209	-13.28%	98,209	-13.28%
Horizon Air / Alaska	1,048	-	-100.00%	18,156	10,492	-42.21%	10,492	-42.21%
Skywest / Alaska	8,288	1,916	-76.88%	126,209	30,178	-76.09%	30,178	-76.09%
AMERICAN	4,396	4,279	-2.66%	103,937	58,748	-43.48%	58,748	-43.48%
American Eagle/Republic	-	-	0.00%	-	140	100.00%	140	100.00%
Compass	-	-	0.00%	120	-	-100.00%	-	-100.00%
Envoy Air (American)	-	-	0.00%	-	464	100.00%	464	100.00%
Mesa	-	-	0.00%	-	293	100.00%	293	100.00%
SkyWest (American)	1,927	700	-63.67%	408,996	13,397	-96.72%	13,397	-96.72%
DELTA	403,259	557,971	38.37%	4,456,391	7,028,033	57.71%	7,028,033	57.71%
SOUTHWEST	166,707	248,539	49.09%	2,288,086	3,639,021	59.04%	3,639,021	59.04%
UNITED	9,012	13,231	46.82%	64,297	101,083	57.21%	101,083	57.21%
Others	12,553	7,832	-37.61%	56,846	127,531	124.34%	127,531	124.34%
CARGO CARRIERS								
FEDEX EXPRESS*	12,632,723	10,427,623	-17.46%	120,129,315	115,302,618	-4.02%	115,302,618	-4.02%
GEM AIR	118,783	76,432	-35.65%	973,562	783,006	-19.57%	783,006	-19.57%
SOUTHERN AIR	-	-	0.00%	251,000	-	-100.00%	-	-100.00%
UPS	9,235,880	8,589,920	-6.99%	69,900,167	67,354,705	-3.64%	67,354,705	-3.64%
MISC CARGO	1,154,423	1,382,855	19.79%	11,858,752	13,385,148	12.87%	13,385,148	12.87%
ABX AIR	-	44,884	100.00%	-	126,177	100.00%	126,177	100.00%
TOTAL ENPLANED CARGO	23,757,487	21,316,273	-10.28%	210,749,086	207,933,066	-1.34%	207,933,066	-1.34%
DEPLANED CARGO								
PASSENGER CARRIERS								
ALASKA	2,027	14,944	637.25%	64,237	168,171	161.80%	168,171	161.80%
Horizon Air / Alaska	1,526	265	-82.63%	26,295	17,699	-32.69%	17,699	-32.69%
Skywest / Alaska	6,708	4,548	-32.20%	94,886	80,580	-15.08%	80,580	-15.08%
AMERICAN	22,031	27,168	23.32%	279,812	356,134	27.28%	356,134	27.28%
American Eagle/Republic	-	-	0.00%	-	7	100.00%	7	100.00%
Compass	-	-	0.00%	187	-	-100.00%	-	-100.00%
Envoy	-	300	100.00%	-	2,294	100.00%	2,294	100.00%
Mesa (American)	-	-	0.00%	-	378	100.00%	378	100.00%
SkyWest (American)	2,460	1,027	-58.25%	13,055	12,201	-6.54%	12,201	-6.54%
DELTA	517,388	867,335	67.64%	6,047,854	10,397,803	71.93%	10,397,803	71.93%
SOUTHWEST	370,085	412,561	11.48%	3,385,133	4,829,039	42.65%	4,829,039	42.65%
UNITED	19,667	26,032	32.36%	150,295	337,103	124.29%	337,103	124.29%
Others	93,589	-	-100.00%	242,820	228,517	-5.89%	228,517	-5.89%
CARGO CARRIERS								
FEDEX EXPRESS*	10,731,330	10,068,059	-6.18%	103,544,331	105,177,787	1.58%	105,177,787	1.58%
GEM AIR	21,282	17,206	-19.15%	261,130	254,648	-2.48%	254,648	-2.48%
SOUTHERN AIR	-	-	0.00%	1,688,688	-	-100.00%	-	-100.00%
UPS	9,396,579	8,979,435	-4.44%	88,280,286	74,894,391	-15.16%	74,894,391	-15.16%
MISC CARGO	675,663	1,529,614	126.39%	5,209,756	7,846,301	50.61%	7,846,301	50.61%
ABX AIR	-	85,105	100.00%	-	401,471	100.00%	401,471	100.00%
TOTAL DEPLANED CARGO	21,860,335	21,948,494	0.40%	209,288,765	204,603,053	-2.24%	204,603,053	-2.24%
TOTAL CARGO	45,617,822	43,264,767	-5.16%	420,037,851	412,536,119	-1.79%	412,536,119	-1.79%

*FEDEX EXPRESS includes mail



Salt Lake City
Department of Airports

COMPARISON OF ON TIME OPERATIONS
November 2021

ARRIVALS

Airport	Flights	% On Time	Rank
CLT CHARLOTTE DOUGLAS	18,821	89.9	1
SLC SALT LAKE CITY INTL	9,360	89.8	2
ATL HARTSFIELD-JACKSON ATLANTA INTL	26,602	89.6	3
MSP MINNEAPOLIS-ST. PAUL INTL	10,373	89.2	4
HNL HONOLULU	4,281	88.5	5
PHL PHILADELPHIA INTL	9,040	87.6	6
IAH HOUSTON GEORGE BUSH	13,600	87.2	7
SFO SAN FRANCISCO INTL	9,918	86.7	8
IAD WASHINGTON DULLES	7,037	86.6	9
DEN DENVER INTL	22,629	86.4	10
ORD CHICAGO O HARE	25,770	86.4	11
BOS BOSTON LOGAN INTL	10,286	86.2	12
LAX LOS ANGELES INTL	16,177	86.1	13
DTW DETROIT METRO WAYNE CNTY	11,307	85.9	14
DFW DALLAS-FT. WORTH REGIONAL	23,322	85.5	15
BWI BALTIMORE/WASHINGTON INTL	6,825	84.7	16
PHX PHOENIX SKY HARBOR INTL	14,688	84.2	17
SEA SEATTLE-TACOMA INTL	13,481	84.1	18
LAS LAS VEGAS MCCARRAN INTL	12,925	83.9	19
MDW CHICAGO MIDWAY	5,332	83.3	20
SAN SAN DIEGO LINDBERGH FIELD	5,766	83.1	21
LGA NEW YORK LAGUARDIA	13,258	82.9	22
DCA RONALD REAGAN NATIONAL	11,539	82.8	23
PDX PORTLAND INTL	4,773	82.6	24
JFK NEW YORK JFK INTL	10,127	81.7	25
TPA TAMPA INTL	6,399	80.9	26
FLL FT. LAUDERDALE	7,031	79.8	27
MCO ORLANDO INTL	11,815	79.7	28
EWR NEWARK LIBERTY INTERNATIONAL	12,827	76.6	29
MIA MIAMI INTL	9,488	76.2	30
AVERAGES	12,160	84.6	

DEPARTURES

Airport	Flights	% On Time	Rank
HNL HONOLULU	4,281	91.5	1
MSP MINNEAPOLIS-ST. PAUL INTL	10,372	89.6	2
SLC SALT LAKE CITY INTL	9,359	89.3	3
BOS BOSTON LOGAN INTERNATIONAL	10,171	88.4	4
ATL HARTSFIELD-JACKSON ATLANTA INTL	26,605	88.0	5
CLT CHARLOTTE DOUGLAS	16,725	87.4	6
IAD WASHINGTON DULLES	5,009	87.2	7
PHL PHILADELPHIA INTL	7,062	86.4	8
PDX PORTLAND INTERNATIONAL	4,772	86.0	9
DTW DETROIT METRO WAYNE CNTY	11,180	84.9	10
SFO SAN FRANCISCO INTL	9,915	84.9	11
IAH HOUSTON GEORGE BUSH	11,238	84.3	12
ORD CHICAGO O HARE	22,613	84.3	13
TPA TAMPA INTERNATIONAL	6,396	84.3	14
JFK NEW YORK JFK INTL	10,123	84.2	15
DCA RONALD REAGAN NATIONAL	11,058	84.0	16
LAX LOS ANGELES INTL	16,170	83.8	17
SEA SEATTLE-TACOMA INTL	13,480	83.6	18
SAN SAN DIEGO LINDBERGH FIELD	5,767	83.2	19
LGA NEW YORK LAGUARDIA	13,210	82.2	20
DFW DALLAS-FT. WORTH REGIONAL	23,352	82.0	21
FLL FT. LAUDERDALE	7,031	80.8	22
DEN DENVER INTERNATIONAL	21,731	80.0	23
MCO ORLANDO INTL	11,816	79.2	24
LAS LAS VEGAS MCCARRAN INTL	12,922	78.5	25
PHX PHOENIX SKY HARBOR INTL	14,688	77.3	26
EWR NEWARK LIBERTY INTERNATIONAL	10,823	75.6	27
MIA MIAMI INTL	9,464	74.3	28
BWI BALTIMORE/WASHINGTON INTL	6,822	73.8	29
MDW CHICAGO MIDWAY	5,332	72.8	30
AVERAGES	11,650	83.1	

ON TIME ARRIVAL PERFORMANCE AT SLC

By Carrier

Air Carrier	Flights	% On Time
AA AMERICAN	475	82.3%
AS ALASKA	318	78.0%
B6 JETBLUE	120	80.0%
DL DELTA	6,939	92.5%
F9 FRONTIER	105	92.4%
UA UNITED	554	86.5%
WN SOUTHWEST	849	79.0%
	9,360	89.8%

Source: DOT Air Travel Consumer Report

DESIGN AND CONSTRUCTION REPORT

TABLE OF CONTENTS

- I. Area Map of Project Locations
- II. Project Schedule
- III. Construction Analysis
- IV. Design and Construction Report

SALT LAKE CITY DEPARTMENT OF AIRPORTS
February 8, 2022



Salt Lake City
International Airport

2021 - 2022 Project Legend

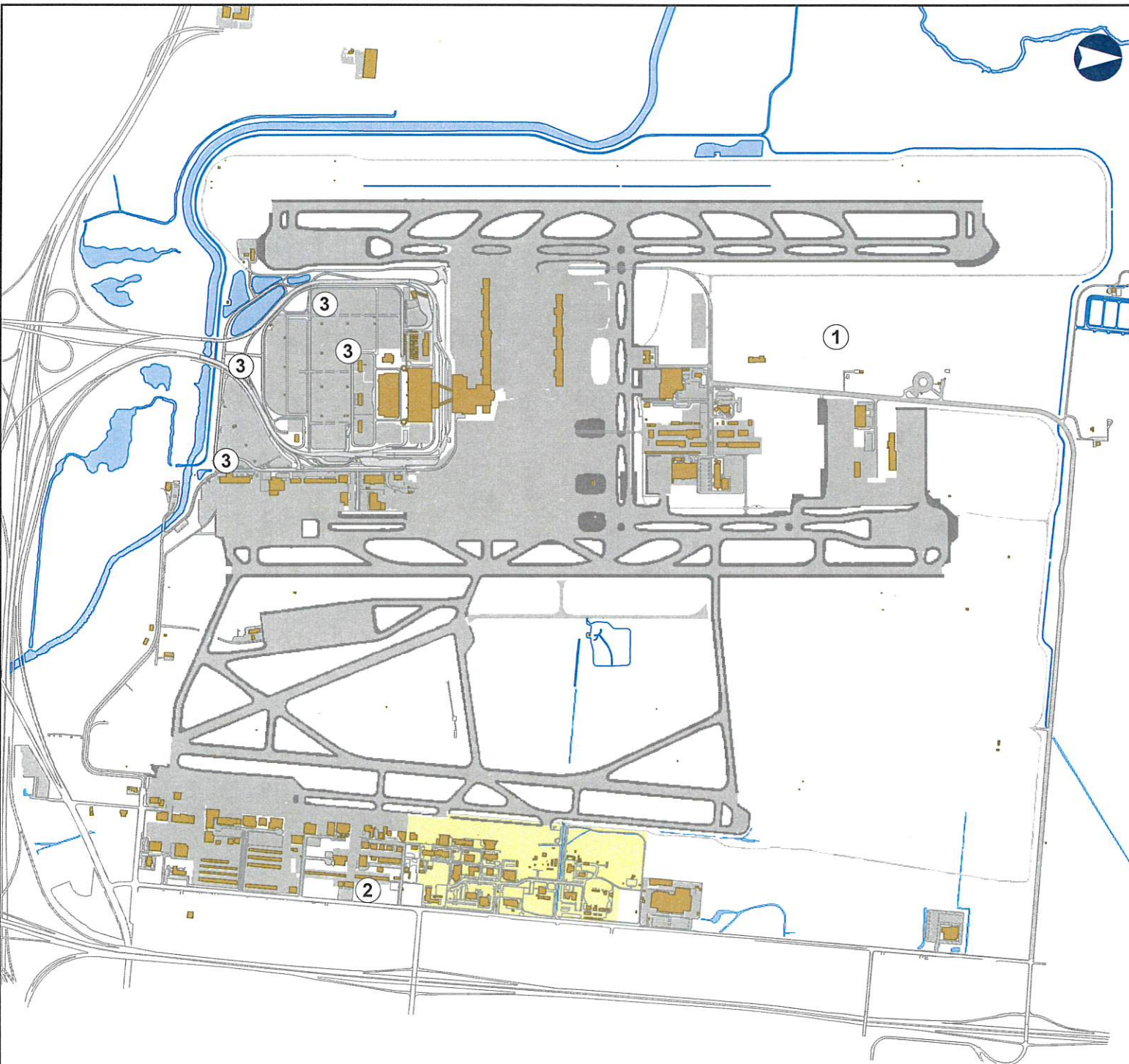
Airfield

1. North Cargo Apron Site Development

Landside

2. GA Zone 3 Corporate Hangar Site
Development

3. Landside Lighting Wire Replacement



SALT LAKE CITY INTERNATIONAL AIRPORT
CONSTRUCTION PROGRAM
2021/2022 Construction Schedule

ID	Task Name	Start	Finish	Nov '21	Dec '21	Jan '22	Feb '22	Mar '22	Apr '22	May '22	Jun '22	Jul '22
1	Project Title	Mon 8/23/21	Fri 9/16/22									
2	(1) North Cargo Apron Site Development	Mon 8/23/21	Fri 9/16/22									
3	(2) GA Zone 3 Corporate Hangar Site Development	Wed 12/8/21	Wed 4/20/22									
4	(3) Landside Lighting Wire Replacement	Mon 4/11/22	Wed 9/7/22									

Project: Microsoft Project (latest) Date: Tue 2/8/22	DESIGN		Inactive Milestone		Manual Summary	
	CONSTRUCTION		Inactive Summary		Start-only	
	SCOPING		Manual Task		Finish-only	
	SUMMARY		Duration-only		Deadline	
	Inactive Task		Manual Summary Rollup			

SALT LAKE CITY DEPARTMENT OF AIRPORTS
CONSTRUCTION PROJECT STATUS 2021 - 2022

#	PROJECT NAME	ENGINEER'S ESTIMATE	BID AMOUNT	APPROVED CHANGE ORDERS TO DATE	% OF COST INCREASE TO DATE	STATUS	CONTRACTOR
	CONSTRUCTION						
1	North Cargo Apron Site Development	\$ 25,763,000	\$ 22,141,148	\$ (15,000)	-0.07%	on schedule	Ames Construction
2	GA Zone 3 Corporate Hangar Site Development	\$ 1,213,237	\$ 1,169,378			on schedule	Ames Construction
3	Landside Lighting Wire Replacement	\$ 1,353,672	\$ 815,689			on schedule	Prime Power & Electric, Inc.
	Total	\$ 28,329,909	\$ 24,126,215	\$ (15,000)	-0.06%		
Budget amount, Engineer's estimate, and Bid amount is based on construction cost only.							

CONSTRUCTION REPORT

CONSTRUCTION

- (1) **North Cargo Apron Site Development** - The Contractor has completed most of the sanitary sewer and future roadway storm water drainage system. Work will continue on site grading and the water system as weather permits.
- (2) **GA Zone 3 Corporate Hangar Site Development** - The Contractor was issued a notice to proceed on December 8, 2022. Submittals are currently being submitted for review and approval by SLCDA. Construction is anticipated to begin February 23, 2022 with utility work.
- (3) **Landside Lighting Wire Replacement** - The Contractor was issued an administrative notice to proceed on February 1, 2022. Submittals are currently being submitted for review and approval by SLCDA. Construction is anticipated to begin in the Spring of 2022.



Advisory Board
Meeting

February 16, 2022

Media Clippings

<https://slcairport.com/assets/pdfDocuments/AABoard/FebBoardPacket2022.pdf>

Compiled by the Communication & Marketing Dept.