



Advisory Board  
Meeting

January 17, 2023

Agenda



## Advisory Board Meeting

January 17, 2024

Pursuant to City Code 2.14.060(A) and Utah Code section 52-4-207(2), the Airport Advisory Board adopted a rule permitting electronic meetings for this Board, regardless of whether a quorum is present at an anchor location, so long as such meetings comply with the Open and Public Meetings Act.

To access the meeting please visit:

<https://saltlakecity.webex.com/saltlakecity/j.php?MTID=m0764c10d6f8b2f3520d13dd65ff93704>



## ADVISORY BOARD MEETING AGENDA

17 January 2024

9:00 A.M.

### CONSENT

- A. Minutes of the 15 November 2023 Meeting

### DISCUSSION

- A. Director's Report – Bill Wyatt, Executive Director, SLCDCA
- B. Airport Redevelopment Program (ARP) Update – Mike Williams, Airport Redevelopment Program (ARP) Director, SLCDCA
- C. Air Service Development Update – Nate Lavin, Air Service Development Manager, SLCDCA

### MEDIA CLIPPINGS

Media Clippings – January 2024

### INFORMATION ITEMS

Air Traffic Statistics –October / November 2023

Construction Report –January 2024

The next meeting will be held on **Wednesday, February 21, 2024**, at 9:00 a.m. Meetings are usually held in the Board Room, located on the third level of the airport terminal and via Web-ex unless otherwise posted. People with disabilities may make requests for reasonable accommodation no later than 48 hours in advance in order to attend this Airport Advisory Board Meeting. Accommodations may include alternate formats, interpreters, and other auxiliary aids. This is an accessible facility. For questions or additional information, please contact Brett Christensen at 801-575-2042.



Advisory Board  
Meeting

January 17, 2024

Minutes

# **SALT LAKE CITY DEPARTMENT OF AIRPORTS MINUTES OF ADVISORY BOARD MEETING**

November 15, 2023

Members Present:           John Bradshaw  
                                      Steve Price  
                                      Hoang Nguyen  
                                      Dirk Burton  
                                      Roger Boyer  
                                      Jess Bird\*

City Council                 Sam Owen\*  
                                      Rachel Otto

Department of Airports:    Bill Wyatt, Executive Director  
                                      Brett Christensen, Executive Assistant  
                                      Eddie Clayson, Director of Maintenance  
                                      Medardo Gomez, ORAT Director  
                                      Brady Fredrickson, Director of Planning and Environmental  
                                      Pete Higgins, Chief Operations Officer  
                                      Brian Butler, Chief Financial Officer  
                                      Mike Williams, ARP Program Director  
                                      Nancy Volmer, Communication and Marketing Director  
                                      Melyssa Trnavskis, Director of Design and Construction Mgmt.  
                                      Treber Anderson, Director of Operations  
                                      Shane Andreasen, Director of Admin/Comm  
                                      TJ Roskelley, Anderson & Kreiger LLP

John Bradshaw called the meeting, held in-person at the SLCDA Admin Offices Board Room and via Webex, to order at 9:04 a.m. (\* indicates the party attended virtually)

## **AGENDA**

### **A. Minutes**

A motion was made by Tye Hoffman and seconded by Jess Bird to approve the minutes of October 18, 2023 as presented. All votes were affirmative; motion passed.

## **B. Director's Report**

Bill Wyatt, Executive Director, updated the Airport Advisory Board regarding current events.

- With the completion of Phase 2 the hard stand is rarely used
- The Peaks dedication was held on November 8<sup>th</sup>.
- The Peaks mimic the Wasatch Mountains and reflect the five Tribes of Utah. The tallest peak standing at 90 feet tall
- Passenger volumes are strong. TSA is anticipating multiple 30,000 passenger days over the Holidays.
- Due to the rigorous FAA inspection program, they've found Pratt and Whitney have some defects with powder metal that can cause cracks in their engines. This could affect 1,000 planes and take 300 days to fix each engine.
- Budget process has begun, expect an increase in the O&M budget.
  - A bigger plant means more janitors, technicians, airfield operators and so on.
- We do not have a lot of finance information for the Airport in this month's packets. The City is in the process of implementing Workday

## **C. Airport Redevelopment Program (ARP) Update – Mike Williams, ARP Director, SLCDA**

Mike Williams, Airport Redevelopment Program (ARP) Director, presented an update on the

- Safety, Statistics and Schedule
  - 12.9 million trade hours
  - 792 trade workers (week ending 11/03/2023)
- Near Term Schedule Milestones
- Airport Redevelopment Program Overall Budget
- Concourse 'A' East/Central Tunnel/Airfield
- Airfield
  - Airfield Paving at Terminal Eyebrow Completed
- Concourse 'B' East – 8 Gates (Phase 3)
- Concourse 'B' East – 16 Gates (Phase 4)
- Overall Phase 2, Phase 3 and Phase 4 Phased Delivery
- Baggage Handling System Update
  - EBS 'Go Live' date August 2024
  - Con B is on schedule for March 2023 load testing.
- Baggage Handling System - TSA Future Capacity Discussion

John Bradshaw asked if there is a time advantage once the bag system goes live? Mike Williams explained that it makes the process of getting the bags ready to go on the plane more efficient.

Dirk Burton inquired about how many restaurants are on the unsecure and secure side. Going on to suggest the restaurants set up booths to sell samples on the unsecure side so everyone can sample what the Airport has to offer. Shane Andreasen explained the Airport will have 147

concessions when phase 4 is complete, of that 70% are food only. We will also be doing some Taste Utah interviews.

#### **D. Revenue Diversion – TJ Roskelley, Anderson & Kreiger LLP**

TJ Roskelley presented an update on Revenue Diversion. Main points included were,

- Statutory Restrictions on the Use of Airport Revenue
  - Airport sponsors can only use airport revenue for the capital and operating costs of, the Airport, the local Airport system and other facilities which are owned or operated by the Airport owner
- Statutory Obligation to be Financially Self-Sustaining
- 1994 Legislation
- Permitted Uses
  - Section V of the Policy / 64 Fed. Reg. 7718-20
  - Airport capital and operating expenses
  - Some costs of airport ground access projects
- Cost Allocations
  - Indirect costs of sponsor services
- Standards of Documentation
  - Reimbursements of direct and indirect costs
- Prohibited Uses
  - Payments for services >costs
  - Improper cost allocations
- Sanctions/Administrative Enforcement
- Sources of Complaints/Enforcement

Roger Boyer asked about the future of Wingpoint Golf Course. Wyatt explained that with TSA moving to 100% employee screening in the next four years we will be developing a remote screening facility, a provision was approved in last year's budget.

John Bradshaw adjourned the meeting at 10:36 a.m

\_\_\_\_\_  
Theresa Foxley, Chair

\_\_\_\_\_  
Date

\_\_\_\_\_  
Erin Mendenhall, Mayor

\_\_\_\_\_  
Date



Advisory Board  
Meeting

January 17, 2024

Discussion Items



**AGENDA:** DISCUSSION ITEM (A)  
**DATE:** 17 January 2024  
**TO:** Airport Advisory Board  
**FROM:** Bill Wyatt, Executive Director  
**SUBJECT:** Executive Director's Report

---

---

Bill Wyatt, Executive Director, will present a monthly informational report to the Board, which may include:

1. ARP progress
2. Ground transportation update
3. Concessions and rental cars
4. Airport safety and security
5. Airport facilities and operations
6. General aviation
7. Passenger and airport users
8. Environmental matters
9. Financial condition
10. Legislative issues
11. Airlines
12. Communications and marketing

**AGENDA:** DISCUSSION ITEM (B)  
**DATE:** 17 January 2024  
**TO:** Airport Advisory Board  
**FROM:** Bill Wyatt, Executive Director  
**SUBJECT:** Airport Redevelopment Program Update

---

Mike Williams, Airport Redevelopment Program (ARP) Director, will present an update on the SLC Airport Redevelopment Program (presentation on file).



# AIRPORT REDEVELOPMENT PROGRAM

Status Update 01/17/2024



# Safety, Statistics and Schedule



## **Safety Statistics**

### **Numbers for April**

- **OSHA National Average**
  - **Lost Time Rate 1.60    Recordable Rate 2.50**
- **HDJV Metrics**
  - **10,903,967 Total Trade Hours worked**
  - **Lost Time Rate 0.24    Recordable Rate 2.37**

### **Trade Hours for the Program Overall**

- **ARP Metrics (HDJV+AOJV)**
  - **13,065,461 Total Trade Hours worked**

### **Trade Workers on Site**

- **545 Trade Workers (week ending 01/05/2024)**

### **Schedule Status and Critical Path**

- **Phase 3 – Completion of Building Skin for Building Dry-in**
- **Phase 3 – Completion of Level 1 West Baggage Make-up Room Reinstallation and Start-up for May 2024**
- **Phase 4 – Completion of MEP Underground Installations and Start of Slab-on-Grade Placement**
- **Overall Program is on Schedule**

# Near Term Schedule Milestones



Target Date	Current Date	Description
01/05/24	Complete	Concourse B East (Phase 4) - Complete Area K Grade Beams
01/22/24	01/22/24	Concourse B East (Phase 4) - Start Shallow Area K Shallow MEP
01/25/24	01/25/24	Terminal Level 3 Ticket Counter Expansion - Construction Dust Walls in Place
01/31/24	01/31/24	Concourse B East (Phase 3) - Permanent Power Available
02/02/24	02/02/24	Concourse B East (Phase 4) - Deicing Building Demo Complete
02/09/24	02/09/24	Central Tunnel - Start Art Audio System Testing
02/10/24	02/10/24	Central Tunnel - Start Art (River Tunnel) Installation
02/19/24	02/19/24	Concourse B East (Phase 4) - Start Grading for Lean Concrete Paving
02/27/24	02/27/24	Concourse B West - Alaska Ramp Space Ready for Move-in

# Airport Redevelopment Program Overall Budget



	Budget 12/14/23 FOC	Committed Nov-23	Commitments Dec-23	Revised Commitments	Earned to Date	Estimate at Completion
Closed TRP CGMPs 1, 2, 2A-2D, 3-7, 9, 09A, 12	\$1,933,090,276	\$1,933,090,276	\$0	\$1,933,090,276	\$1,933,090,276	\$1,933,090,276
Closed NCP CGMPs 13, 14, 15, 16, 17, 18 & 19	\$487,852,444	\$487,852,444	\$0	\$487,852,444	\$487,852,444	\$487,852,444
CGMP 2E & F CMAR General Conditions/Services	\$99,720,169	\$99,720,169	\$0	\$99,720,169	\$63,057,857	\$99,720,169
CGMP 2G CMAR Preconstruction Phase 4	\$46,780,829	\$46,780,828	\$0	\$46,780,828	\$5,264,896	\$46,780,829
CGMP 10 South Concourse East/Tunnel Shell	\$567,787,263	\$562,969,284	\$0	\$562,969,284	\$537,929,314	\$567,787,263
CGMP 11, 11A & 11B Apron Paving & Fueling	\$288,621,400	\$288,621,400	\$0	\$288,621,400	\$199,253,026	\$288,621,400
CGMP 19A Phase 3 NCP/Tunnel Buildout	\$370,537,208	\$366,822,245	\$0	\$366,822,245	\$240,602,963	\$370,537,208
CGMP 20 NCP Phase 2 Airfield Paving & Jet Fuel	\$78,108,685	\$77,645,774	\$0	\$77,645,774	\$18,882,197	\$78,108,685
CGMP 22 & 22F Phase 4 Concourse	\$476,403,380	\$476,403,380	\$0	\$476,403,380	\$42,625,691	\$476,403,380
CGMP 24 Phase 4 Airfield	\$62,627,532	\$62,627,532	\$0	\$62,627,532	\$13,993,397	\$62,627,532
<b>Total Program Construction</b>	<b>\$4,411,529,186</b>	<b>\$4,402,533,332</b>	<b>\$0</b>	<b>\$4,402,533,332</b>	<b>\$3,542,552,061</b>	<b>\$4,411,529,186</b>
TRP Owner Procurement	\$6,241,169	\$6,184,169	\$57,000	\$6,241,169	\$5,520,063	\$6,241,169
NCP Owner Procurement	\$3,078,615	\$3,039,266	\$39,349	\$3,078,615	\$1,860,182	\$3,078,615
Security Checkpoint Equipment	\$12,751,472	\$11,751,472	\$0	\$11,751,472	\$7,848,061	\$12,751,472
Automated Security Exit Door Equipment	\$917,430	\$914,453	\$0	\$914,453	\$914,453	\$917,430
TRP Soft Cost	\$385,252,918	\$353,045,815	\$609,208	\$353,655,023	\$335,377,368	\$385,252,918
NCP Soft Cost Phases 1&3	\$185,554,445	\$149,972,085	\$305,511	\$150,277,596	\$131,470,017	\$185,554,445
NCP Soft Cost Phase 4	\$67,295,769	\$29,258,529	\$1,970,887	\$31,229,416	\$23,157,814	\$67,295,769
<b>Total Program Soft Cost</b>	<b>\$661,091,818</b>	<b>\$554,165,789</b>	<b>\$2,981,955</b>	<b>\$557,147,744</b>	<b>\$506,147,958</b>	<b>\$661,091,818</b>
TRP Owner Reserve	\$7,827,197	\$0	\$0	\$0	\$0	\$7,827,197
NCP Owner Reserve	\$54,524,861	\$0	\$0	\$0	\$0	\$54,524,861
<b>Total Program Owner Reserve</b>	<b>\$62,352,058</b>	<b>\$0</b>	<b>\$0</b>	<b>\$0</b>	<b>\$0</b>	<b>\$62,352,058</b>
<b>Total ARP Program Budget</b>	<b>\$5,134,973,062</b>	<b>\$4,956,699,121</b>	<b>\$2,981,955</b>	<b>\$4,959,681,076</b>	<b>\$4,048,700,019</b>	<b>\$5,134,973,062</b>

# Central Tunnel and Airfield



## Central Tunnel

- **Passenger Cell Moving Walk Start-up and Testing Initiated**
- **Passenger Cell Final Paint and Trim-out Started**
- **High Speed Baggage Conveyor Control Wiring Progressing**

## Airfield

- **Preparation and Underground underway for Spring Paving**
- **Phase 4 Site Paving Demo Continues at Former Hardstand Site**
- **Started Deicing Building Demo**

# Concourse 'B' East - 8 Gates (Phase 3)



## **Concourse 'B' East 8 Gates (Phase 3)**

- **Area G Mechanical, Electrical, Plumbing and Special Systems**
- **Area G Mini-Plaza Drywall Underway**
- **Area G Mini-Plaza Terrazzo Prep Started**
- **Area J – Holdroom Carpet Started**
- **BHS Level 1 Installation Progressing**
- **Phase 1 BHS Reinstallation/Final Mech Installation Complete**
- **Restroom Wall Tile Installation Progressing**
- **Ceiling Grid and Device Installation Progressing in 8-Gate Area**



# Concourse 'B' East – 16 Gates (Phase 4)



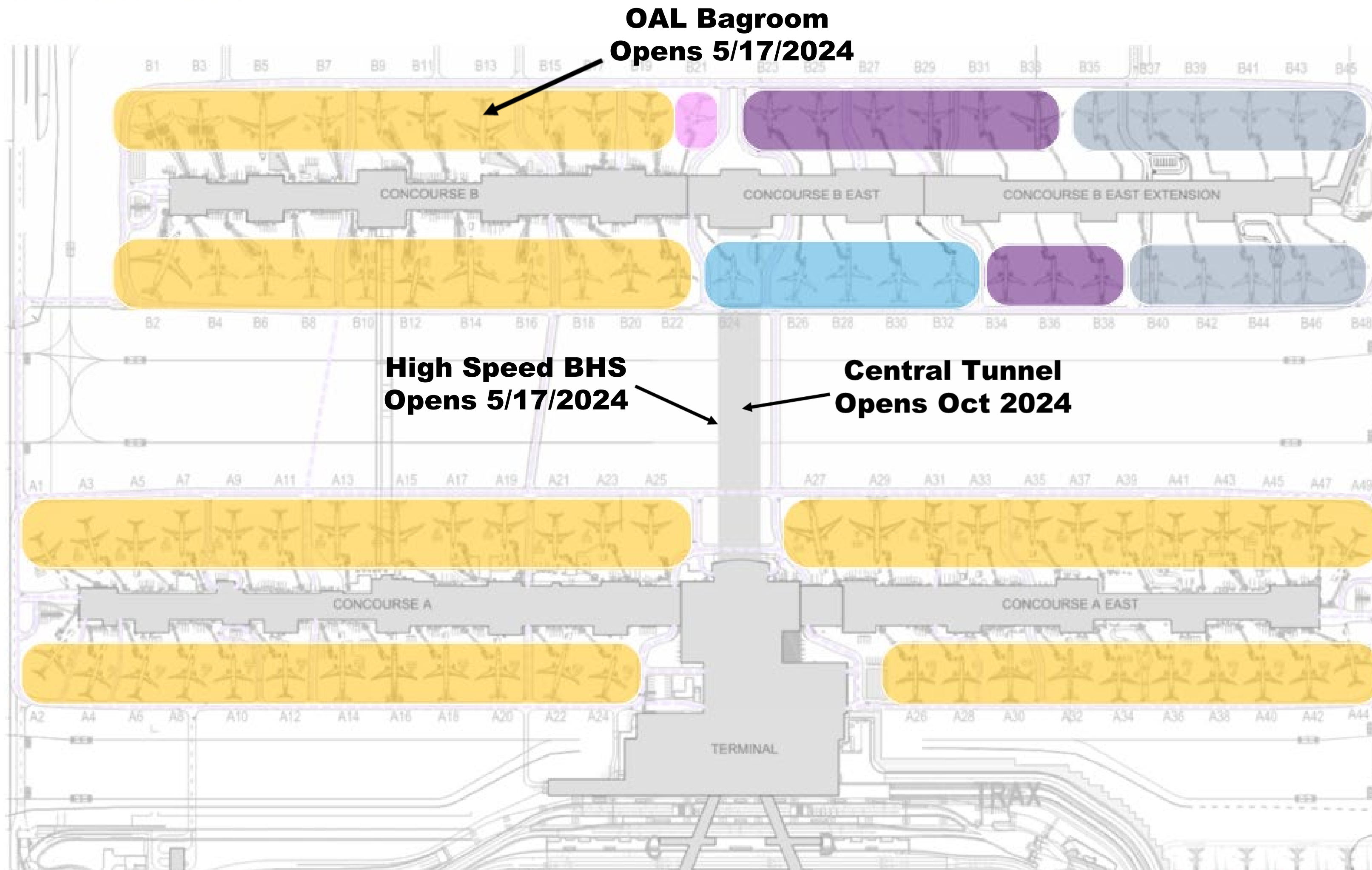
## **Concourse 'B' East 16 Gates (Phase 4)**

- Stone Column (Ground Improvement) Complete**
- Driven Pile Nearing Completion**
- Deep and Shallow MEP Underground in Progress**
- Started Piles Caps and Foundations**

# Overall Phase 2, Phase 3 and Phase 4 Phased Delivery



- 68 CURRENT GATES OPEN
- 05 GATES OPEN OCT OF 2024
- 09 GATES OPEN OCT OF 2025
- 01 GATES OPEN OCT OF 2025
- 11 GATES OPEN OCT OF 2026



# Baggage Handling System Update - EBS & Concourse B



## **Early Bag Storage (EBS) Update:**

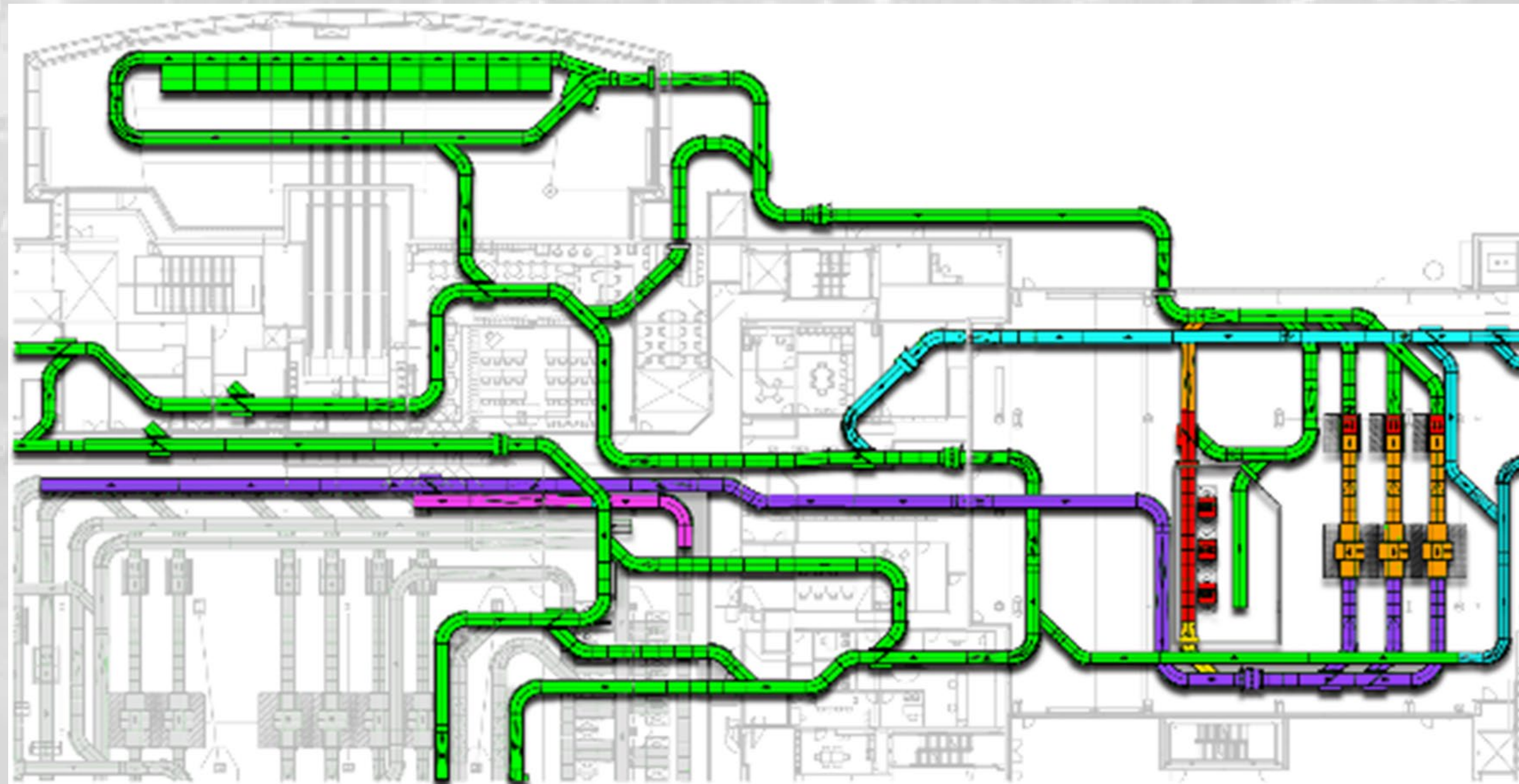
- **On Schedule for June 2024 EBS load testing**
- **EBS 'Go Live' date August 2024**

## **Concourse B – Bagroom and High Speed Conveyor Concourse A to Concourse B:**

- **On Schedule for March 2024 Load Testing**
- **On Schedule to start migrating Airline Carriers to Concourse B May 2024**

# Baggage Handling System – Future Capacity

- **Received TSA authorization to move forward with the A-Nub CBIS project, Introba has been contracted to formally move forward with completing and packaging the combined Pre-Design/Schematic Design submittal**
- **TSA Submittal targeted for end of February 2024 with a goal of receiving TSA comments end of March 2024**
- **Once TSA and SLCDA formally agree to move forward, an implementation schedule will be finalized to support completion by end of Phase 4**



# Baggage Handling System



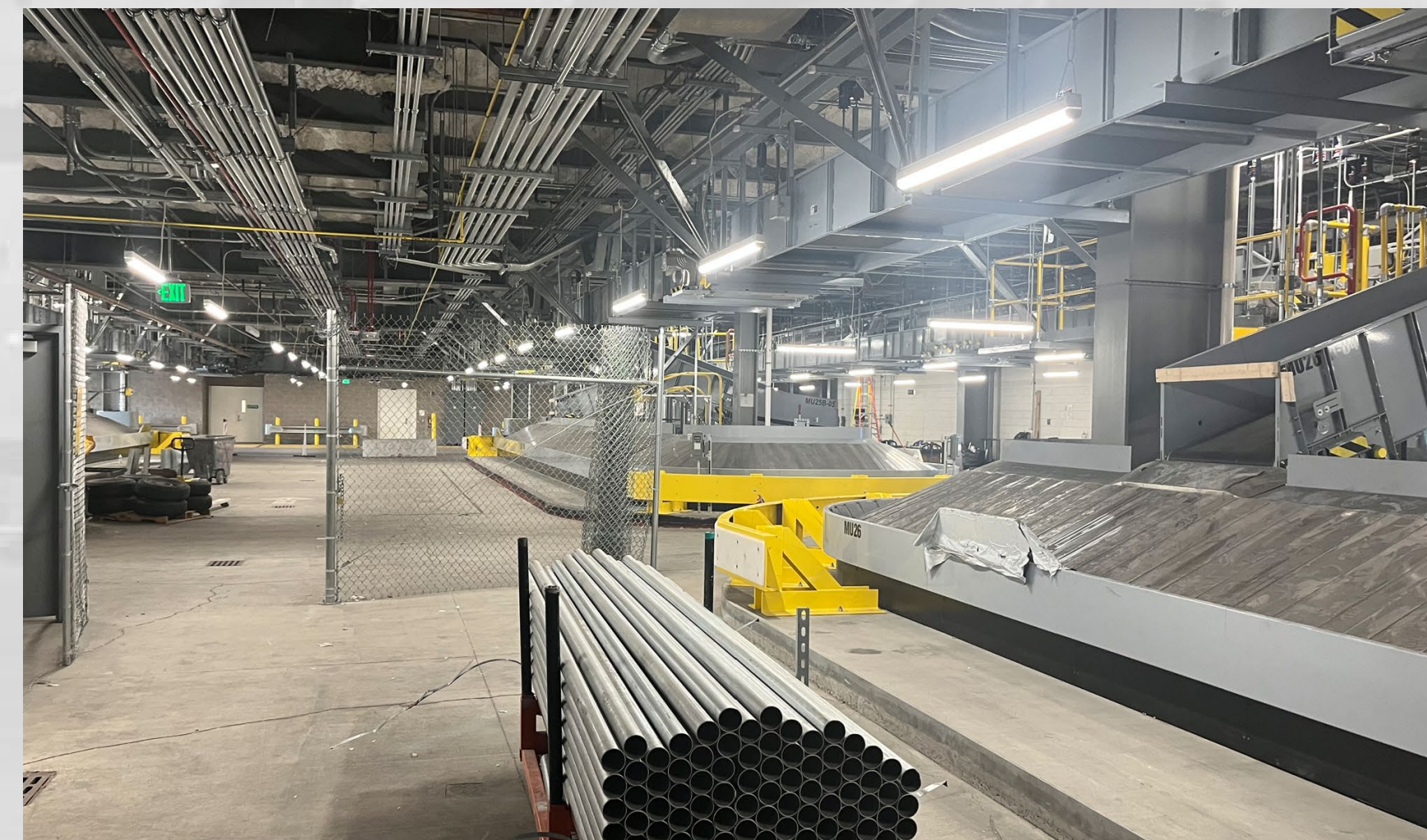
**Early Bag Storage**



**Early Bag Storage**



**High Speed Conveyor**

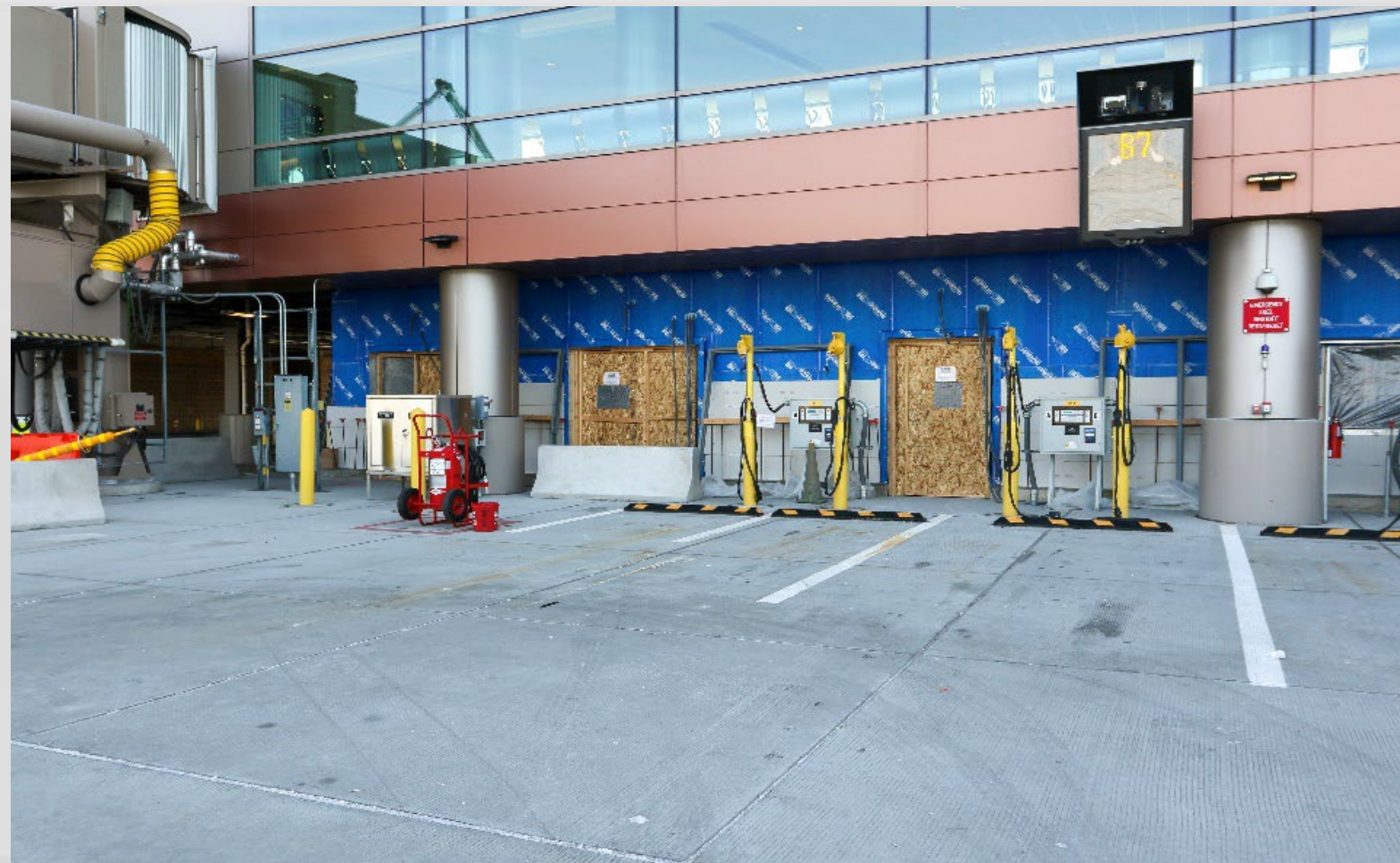


**Concourse B West Baggage Makeup**

# Central Tunnel



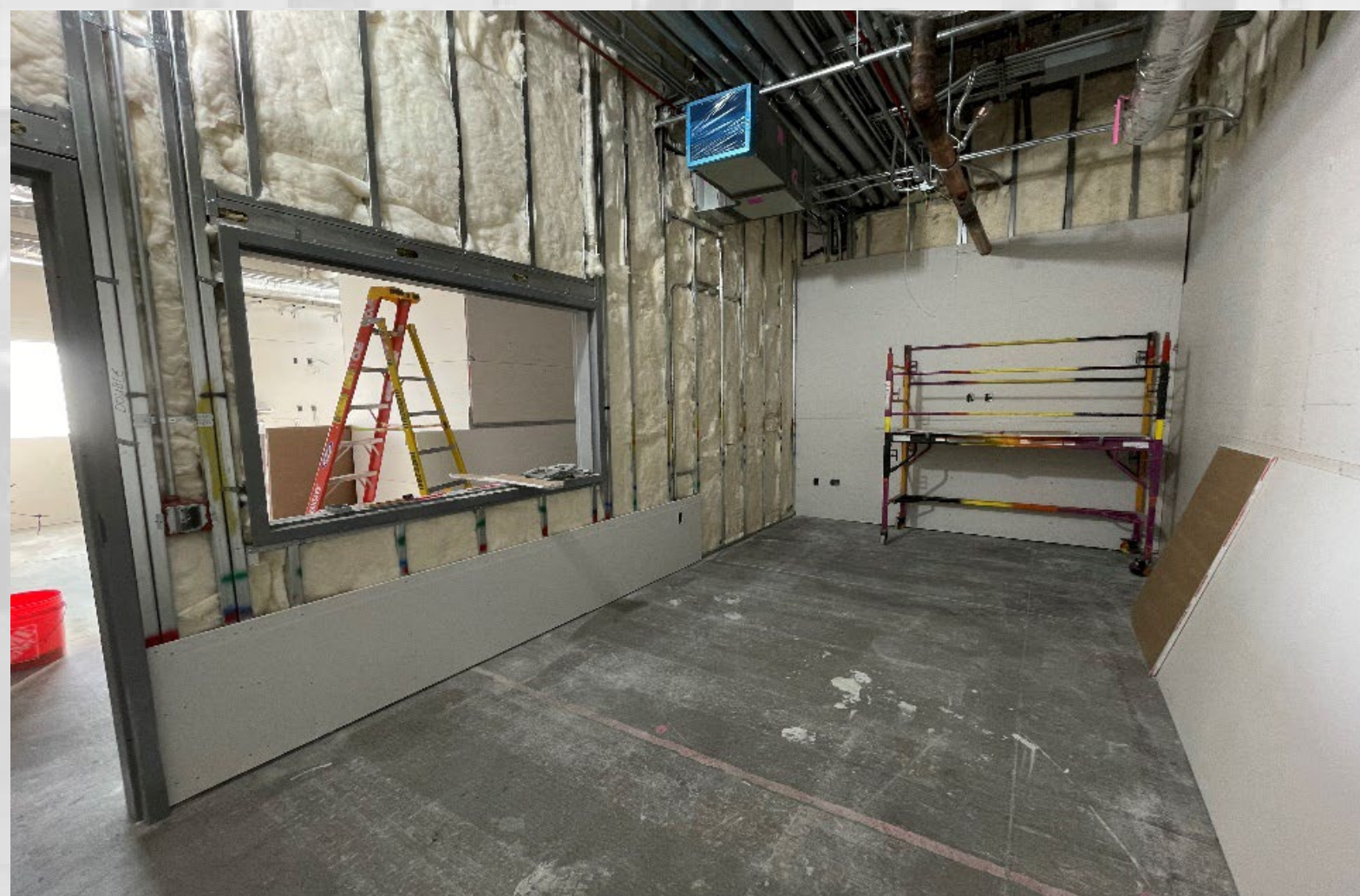
# Concourse B West - Covered and Unenclosed Build-Out



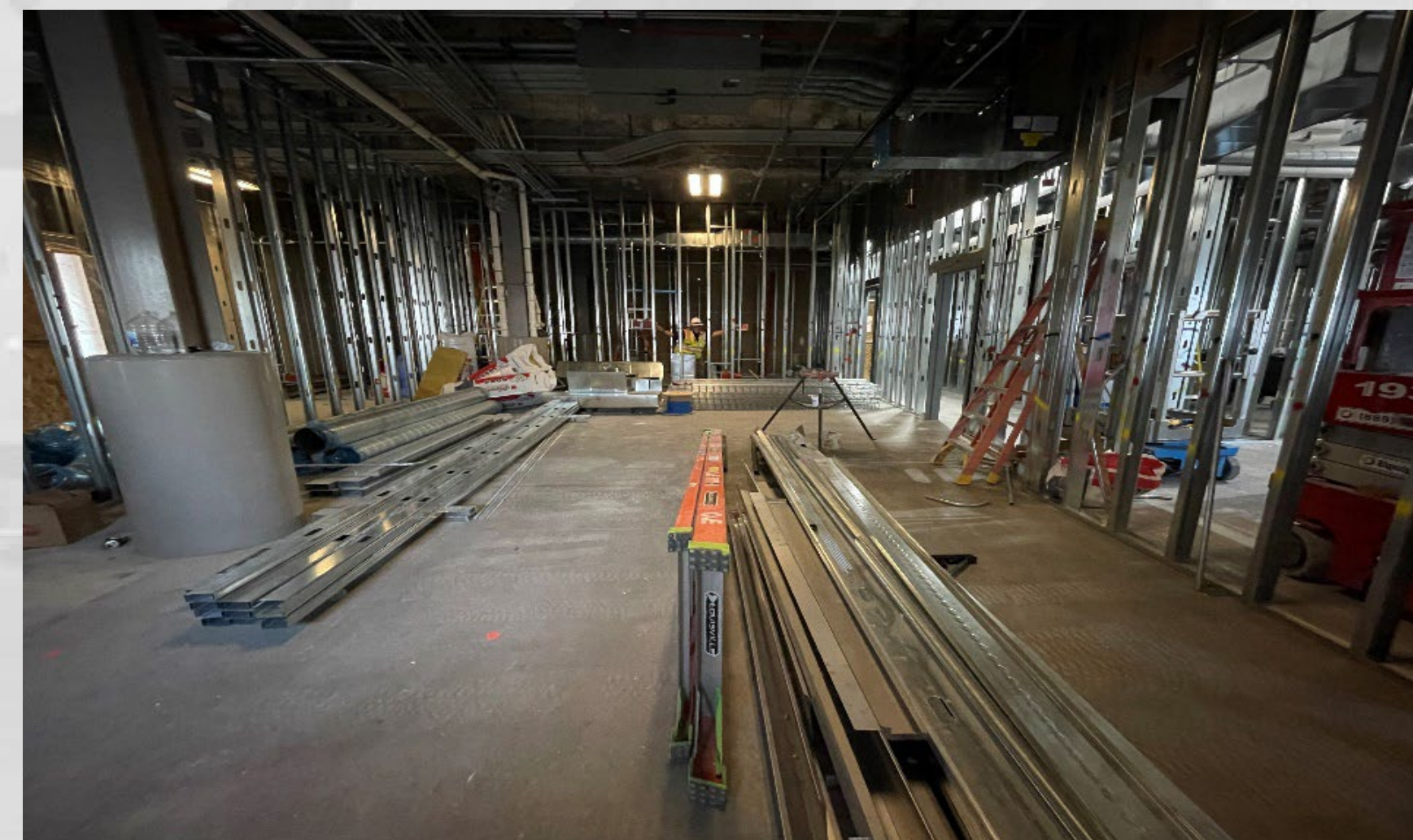
**Ramp Level Operations Space**



**Interior Stud Framing**



**Interior Drywall**



**Interior Stud Framing**

# Concourse B East (Phase 3)



**Level 2 Area J Holdroom Ready for Carpet**



**Level 2 Looking West**



**Level 3 Area G Sky Club**



**Area G Level 2 In-Slab Radiant Heating**



# Concourse B East (Phase 3)



**Phase 3 South Elevation**



**Phase 3 North Elevation**

# Concourse B East (Phase 4)



**Pile Cap Excavation**



**Pile Cut-off Underway**



**Underground MEP**



**Start of Foundations**

# The New SLC



**AGENDA:** DISCUSSION ITEM (C)  
**DATE:** 17 January 2024  
**TO:** Airport Advisory Board  
**FROM:** Bill Wyatt, Executive Director  
**SUBJECT:** Air Service Development Update

---

Nate Lavin, Air Service Development Manager, will present an update on Air Service Development Update (presentation on file).



# AIR SERVICE DEVELOPMENT UPDATE

Nate Lavin

# Air Service Portfolio 2024



26M

Passengers  
2022

98

Destinations

326

Departures

13

Carriers

4th

Largest Delta  
Hub



SLC will welcome Hawaiian Airlines in 2024, in addition to new flights on Aeromexico and Delta.



Daily flights to Honolulu begin May 16!

# ALOHA!



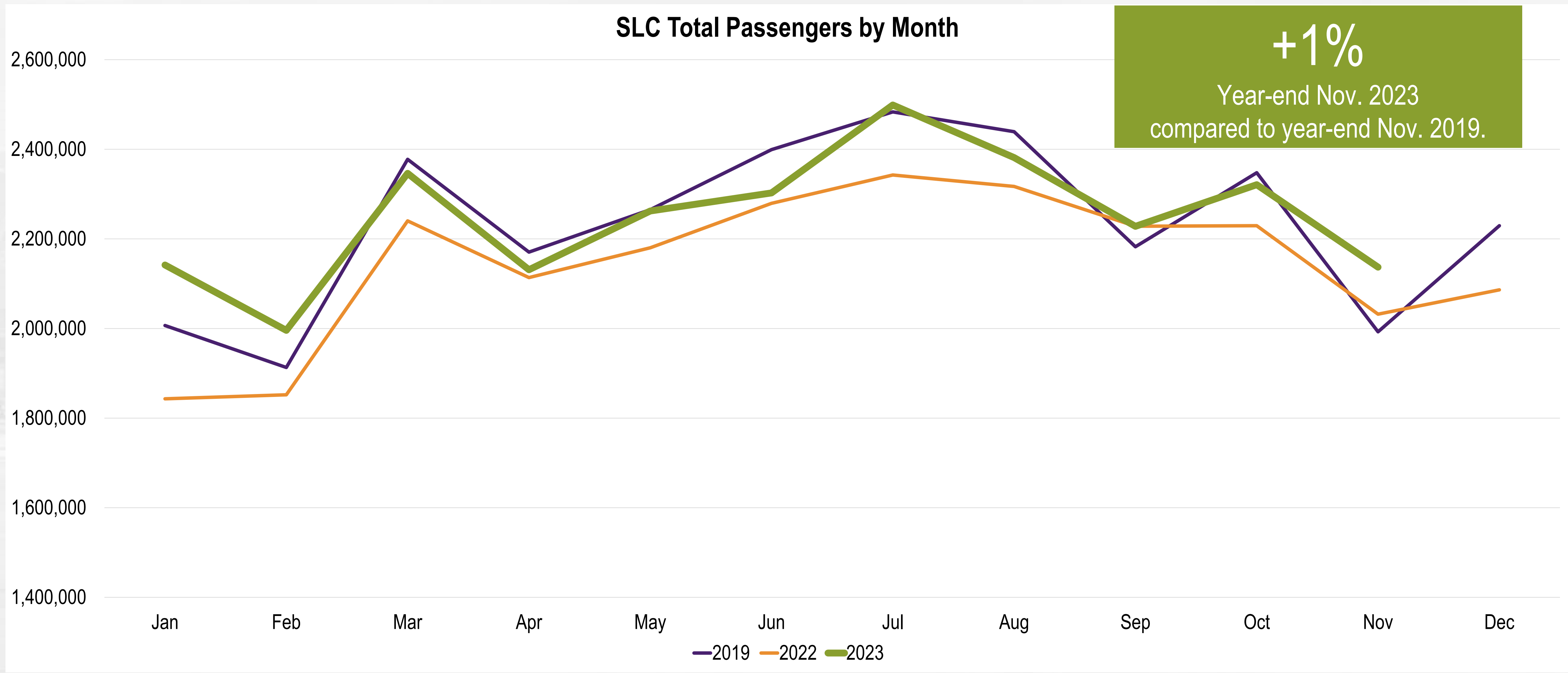
MORE FLIGHTS TO  
MORE DESTINATIONS IN

# MEXICO

MONTERREY (MTY) & MEXICO CITY (MEX)



SLC experienced record passengers for its fiscal year-ending June 2023 and expects its calendar year to follow suit.



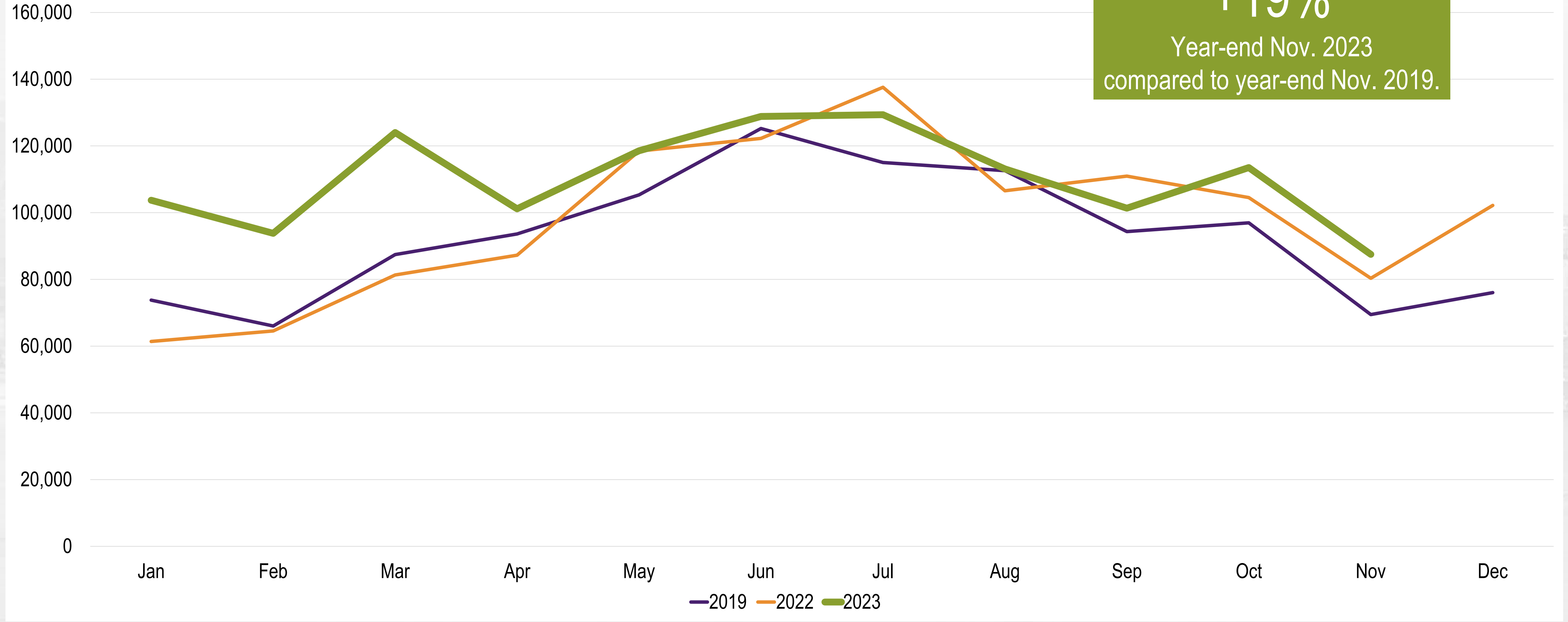
Source: SLC Airport



SLC is seeing notable growth in international traffic, especially after many border restrictions were lifted.



SLC International Passengers by Month



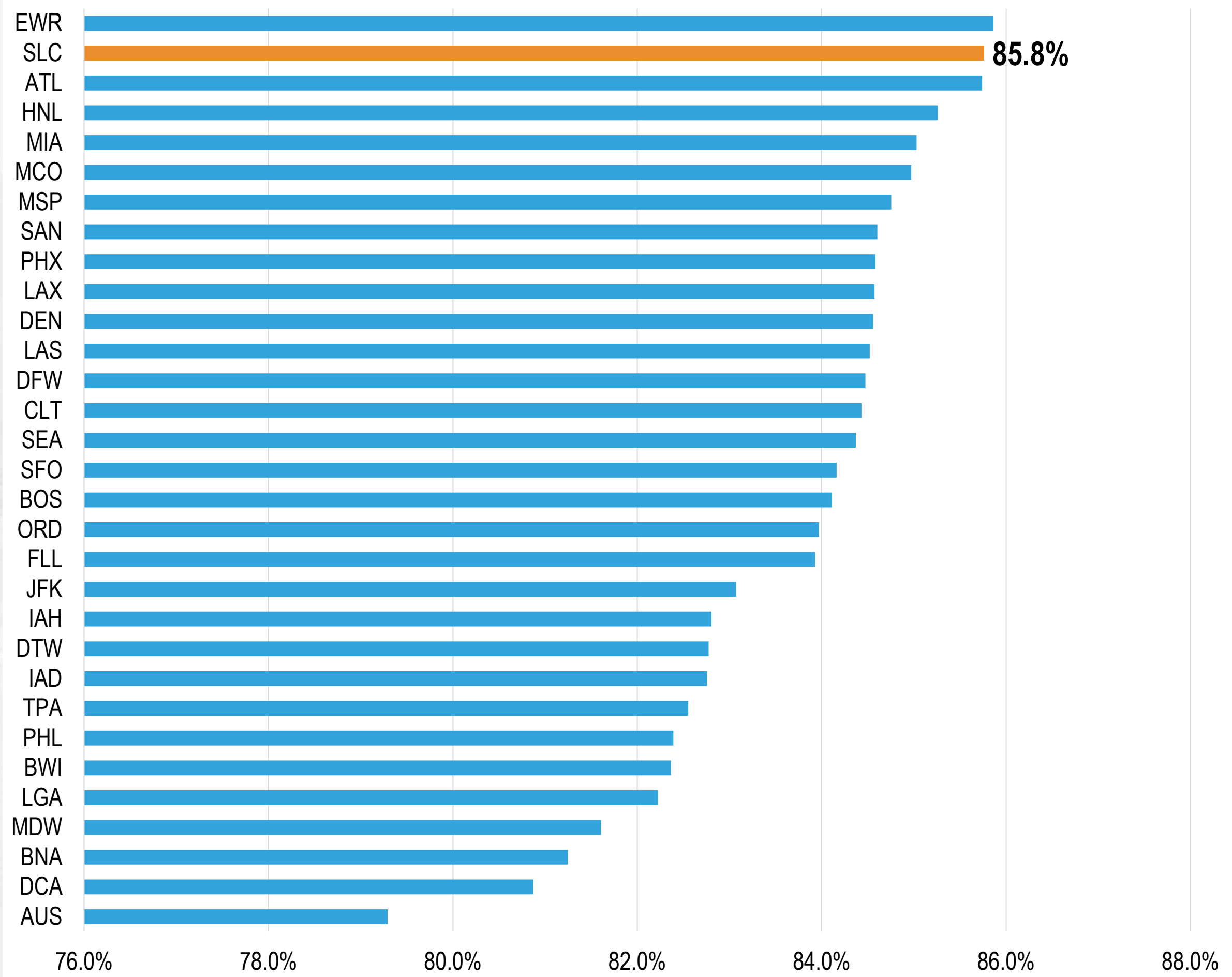
**+19%**  
Year-end Nov. 2023  
compared to year-end Nov. 2019.

Source: SLC Airport

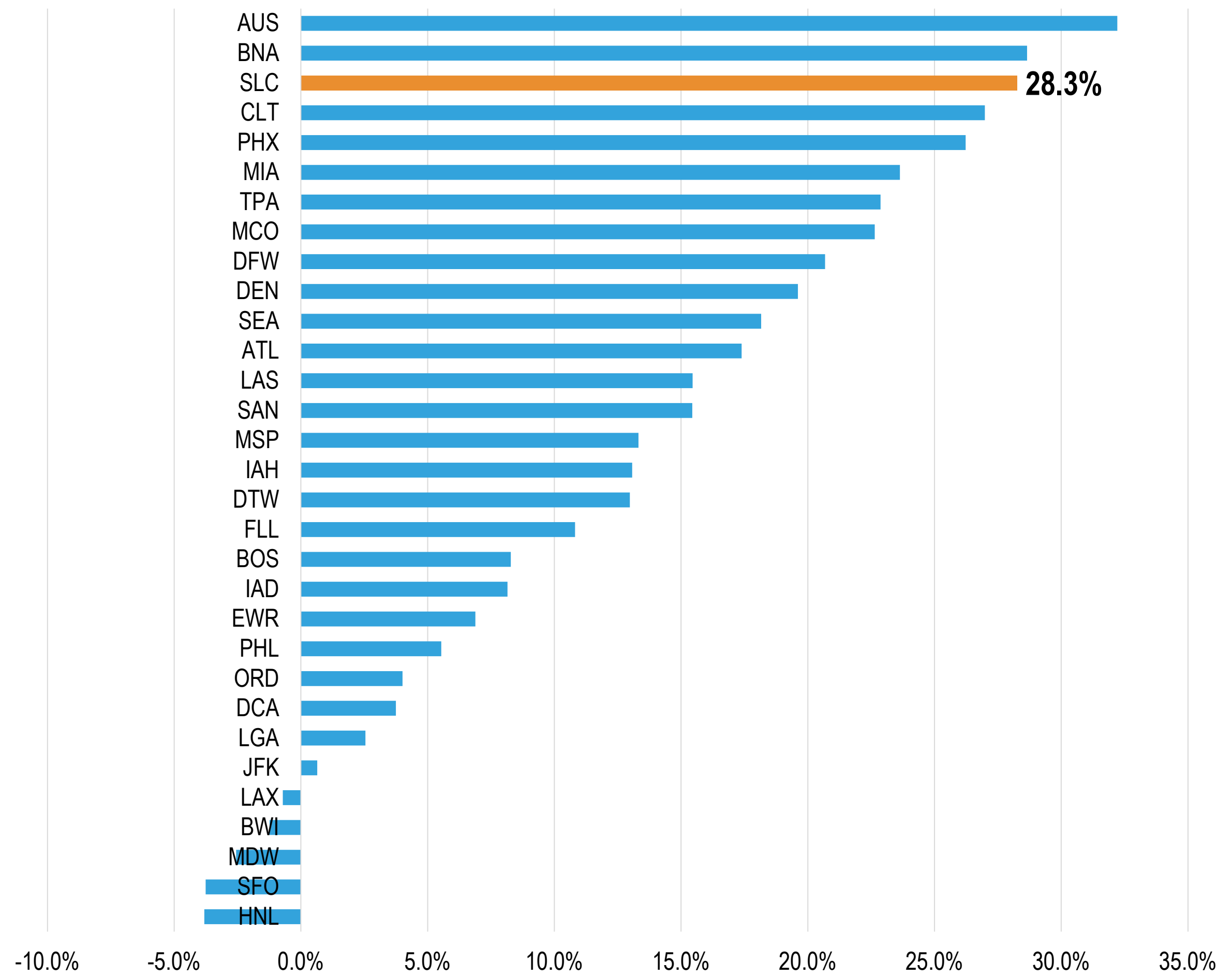
SLC's airline performance is leading the nation with one the highest average load factors and airline revenue growth among all U.S. large hubs.



**U.S. Large Hub Load Factors**  
YE September 2023



**U.S. Large Hub Revenue Change**  
YE Sep. 2023 vs. YE Sep. 2019



Source: U.S. DOT T-100 and FMdg data via Cirium

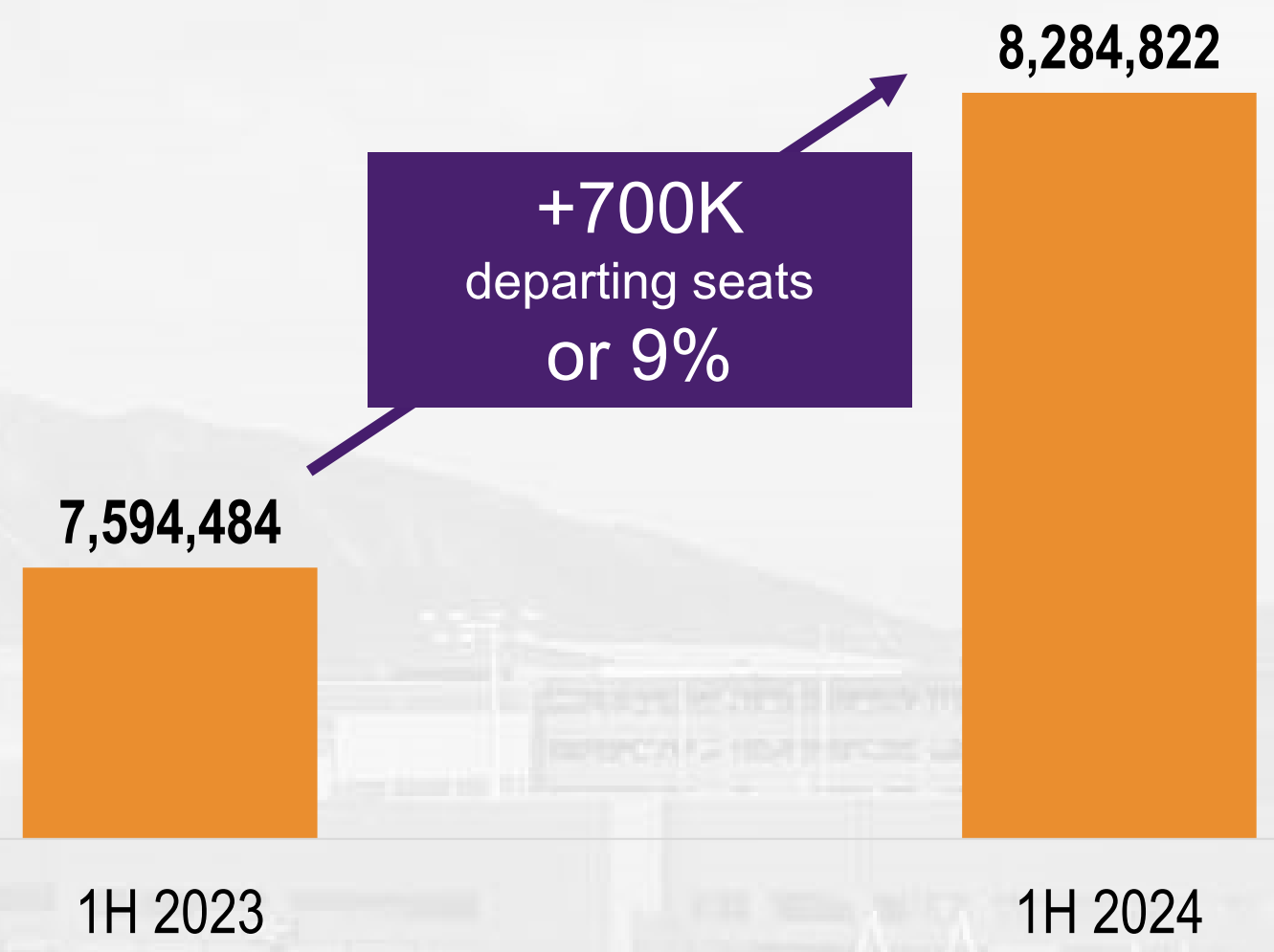
Every airline operating at SLC will add seat capacity to the market in 2024 for the first time since the pandemic.



**SLC Seat Change by Carrier**  
1H 2024 vs. 1H 2023



**SLC Total Seat Change**  
1H 2024 vs. 1H 2023



Source: Schedule data via Cirium

The aviation industry remains a volatile one, which requires SLC to be constantly vigilant of and adapt to the changes.



## The Washington Post

TRANSPORTATION

Alaska Airlines reaches deal to buy Hawaiian Airlines for \$1.9 billion

## Northeastern Global News

JetBlue's \$3.8B merger with Spirit goes to court. Who will win?

## TRAVEL WEEKLY

AVIATION

Aircraft delivery delays keep limiting airlines' capacity growth

## Investopedia

JetBlue Reports Loss, Cuts Outlook on Overwhelming Operational Expenses

## TRAVEL WEEKLY

AVIATION

Pilot shortage eases, but regional carriers bear brunt

## Investopedia

Southwest Slumps on Higher Fuel Cost Forecast and Lower Capacity Outlook

## FlightGlobal

Engines

P&W to recall 1,200 PW1000Gs for inspections in latest blow to airline operations

## The New York Times

Smaller Airlines Seek Mergers to Compete With Industry Giants

With the ongoing construction of The New SLC, the airport is positioning itself as the Premier Global Hub of the Intermountain West.



## SLC Air Service Strategic Initiatives

Strengthen and Grow Delta's Hub Operation

Expand Global Reach to New International Destinations

Increase Presence of Low-Cost Carriers

# Long-Term International Strategy





Advisory Board  
Meeting

January 17, 2024

Media Clippings

<https://slcairport.com/assets/pdfDocuments/AABoard/Jan2024ClippingPacket.pdf>

Compiled by the Communication & Marketing Dept.



Advisory Board  
Meeting

January 17, 2024

Information



# **CONSTRUCTION REPORT**

## **TABLE OF CONTENTS**

- I. Area Map of Project Locations
- II. Project Schedule
- III. Construction Analysis
- IV. Construction Report

**SALT LAKE CITY DEPARTMENT OF AIRPORTS**

January 10, 2024



DEPARTMENT OF AIRPORTS

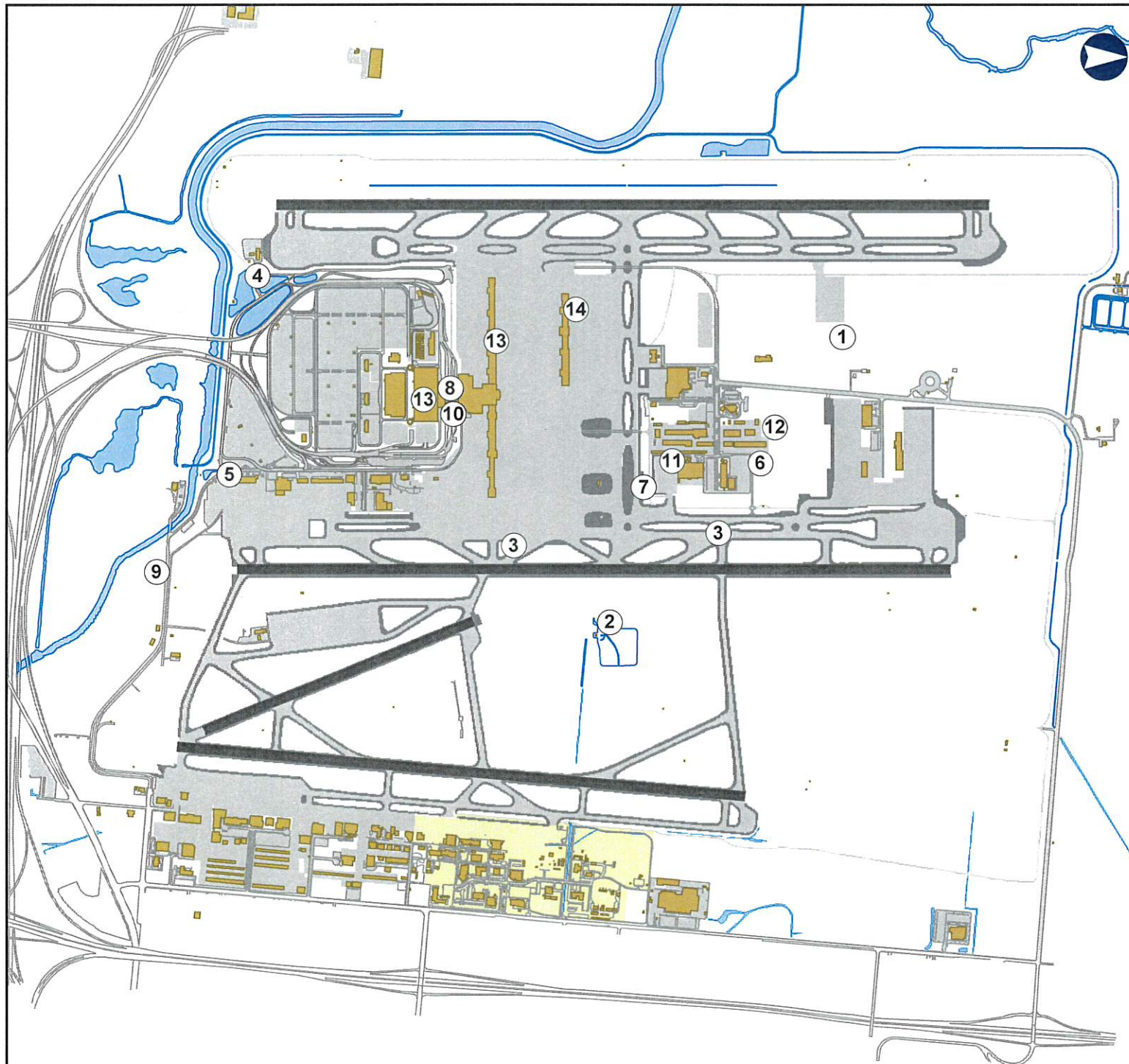
## 2023 - 2024 Project Legend

### Airfield

1. North Cargo Apron Site Development
2. Pump House #5 Renovations
3. Glycol E. and Intermediate E. Pumpstation Rehabilitation
4. Pumpstation #9 Renovations
5. Electrical Vehicle Charging Stations (FY23)
6. Equipment Storage Bldg.
7. Taxiway F Reconstruction (G-F1)

### Landside

8. Gateway Building Restroom Renovations
9. Electrical & Communication Duct Bank AOC to Gate 7
10. Gateway Sustainability Display
11. Replace PVC Roof - NS1
12. Replace PVC Roof - NS14
13. Toilet Carriers Upgrades
14. Concourse B Maintenance T.I.



SALT LAKE CITY INTERNATIONAL AIRPORT  
CONSTRUCTION PROGRAM  
2023/2024 Construction Schedule

ID	Task Name	Start	Finish	December 2023	January 2024	February 2024	March 2024	April 2024	May 2024
1	<b>Project Title</b>	<b>Mon 8/23/21</b>	<b>Fri 3/14/25</b>						
2	(1) North Cargo Apron Site Development	Mon 8/23/21	Sun 12/31/23						
3	(2) Pump House No. 5 Renovations	Wed 3/1/23	Fri 2/23/24						
4	(3) Glycol E. & Intermediate E. Pumpstation Rehabilitation	Mon 8/21/23	Tue 4/30/24						
5	(4) Pump Station #9 Renovations	Tue 8/8/23	Fri 3/14/25						
6	(5) Electrical Vehicle Charging Stations (FY23)	Mon 9/25/23	Wed 11/27/24						
7	(6) Equipment Storage Building	Mon 9/25/23	Mon 3/10/25						
8	(7) T/W F Reconstruction (G-F1)	Mon 4/15/24	Mon 9/30/24						
9	(8) Gateway Building Restroom Renovations	Tue 3/22/22	Fri 11/17/23						
10	(9) Electrical & Communication Duct Bank from AOC to Gate 7	Mon 5/1/23	Tue 1/2/24						
11	(10) Gateway Sustainability Display	Fri 1/13/23	Fri 12/22/23						
12	(11) Replace PVC Roof - NS1	Mon 7/31/23	Wed 4/24/24						
13	(12) Replace PVC Roof - NS14	Mon 7/31/23	Wed 4/24/24						
14	(13) Toilet Carriers Upgrades	Mon 9/11/23	Thu 5/2/24						
15	(14) Concourse B Maintenance T.I.	Mon 1/22/24	Mon 5/6/24						

Project: Microsoft Project (latest)  
Date: Tue 1/9/24

CONSTRUCTION

**SALT LAKE CITY DEPARTMENT OF AIRPORTS  
CONSTRUCTION PROJECT STATUS 2023 - 2024**

#	PROJECT NAME	ENGINEER'S ESTIMATE	BID AMOUNT	APPROVED CHANGE ORDERS TO DATE	% OF COST INCREASE TO DATE	STATUS	CONTRACTOR
<b>CONSTRUCTION</b>							
1	North Cargo Apron Site Development	\$ 25,763,000	\$ 22,141,148	\$ 163,046	0.74%	on schedule	Ames Construction
2	Pump House No. 5 Renovations	\$ 841,630	\$ 1,630,000	\$ 26,672	1.64%	on schedule	Saunders Construction
3	Glycol E. and Intermediate E. Pumpstation Rehab.	\$ 794,862	\$ 358,508			on schedule	IPW LLC
4	Pump Station #9 Renovations	\$ 956,629	\$ 2,255,819			on schedule	Crescent Construction
5	Electrical Vehicle Charging Stations (FY23)	\$ 570,367	\$ 620,745	\$ 5,000	0.81%	on schedule	Apex Electric LLC
6	Equipment Storage Building	\$ 4,482,931	\$ 4,070,100			on schedule	Paulsen Construction
7	Taxiway F Reconstruction (G-F1)	\$ 11,347,940	\$ 11,197,743			award process	Granite Construction
8	Gateway Building Restroom Renovations	\$ 405,898	\$ 403,636	\$ 125,256	31.03%	on schedule	Paulsen Construction
9	Electrical & Communications Duct Bank AOC to Gate 7	\$ 3,371,053	\$ 3,517,988	\$ 124,274	3.53%	on schedule	Americom Technology LLC
10	Gateway Sustainability Display	\$ 190,000	\$ 223,950			on schedule	Paulsen Construction
11	Replace PVC Roof Membrane on NS1	\$ 676,591	\$ 415,600			on schedule	Heritage Roofing
12	Replace PVC Roof Membrane on NS14	\$ 203,656	\$ 185,850			on schedule	Heritage Roofing
13	Toilet Carriers Upgrades	\$ 2,213,106	\$ 1,387,841	\$ 23,132	1.67%	on schedule	Paulsen Construction
14	Concourse B Maintenance T.I.	\$ 2,151,320	\$ 1,248,800			award process	AIS Commercial
	<b>Total</b>	<b>\$ 53,968,983</b>	<b>\$ 49,657,728</b>	<b>\$ 467,379</b>	<b>0.94%</b>		
Engineer's estimate and Bid amount is based on construction cost only.							

## CONSTRUCTION REPORT

### CONSTRUCTION

- (1) **North Cargo Apron Site Development** - The Contractor is currently finishing the last of the punch list items. Long lead electrical items took longer than anticipated complicated by the holiday season delaying the Rocky Mountain Power service for the roadway lighting on 1580 North. Work is progressing and is scheduled to be completed by end of January 2024.
- (2) **Pump House No. 5 Renovation** - The Contractor is nearing completion with the plumbing and electrical work. Control panel installation and programming to the BAS system is on-going. The project completion is anticipated for February 23, 2024.
- (3) **Glycol East and Intermediate East Pumpstation Rehabilitation** - Construction in the Glycol East station has been completed with only a few minor punch list items remaining. Modifications to the Intermediate East Pumpstation will be done in the Spring of 2024 due to pending weather and deicing operations.
- (4) **Pump Station #9 Renovations** - Electrical and mechanical submittals are 95% completed. The Contractor mobilized in mid-November 2023 and is currently working on the underground flow meter vault. Completion date for this project is anticipated for March 2025.
- (5) **Electrical Vehicle Charging Stations (FY23)** - The submittal process has been completed. Site mobilization is scheduled to begin in January of 2024. Substantial completion is anticipated for November 27, 2024.
- (6) **Equipment Storage Building** - The Contractor has completed the concrete footings and foundations. Structural steel joists, decks, and masonry CMU/rebar has been delivered to the project site. The project is approximately 10% complete. Substantial completion is anticipated for April 2025.
- (7) **Taxiway F Reconstruction (G-F1)** - The bid opening for this project was held on November 30, 2023. The apparent low bidder is Granite Construction. SLCDCA is currently waiting for grant approval from the FAA.
- (8) **Gateway Building Restroom Renovations** - The Contractor was issued substantial completion on November 17, 2023. Punch list items are currently being completed.
- (9) **Electrical & Communication Duct Bank from AOC to Gate 7** - The Contractor has completed the installation of the duct bank to the existing RMP vault tie-in on the south end of Runway 17/35. The project is in winter shutdown. Work will commence in the spring to complete the finish grading and seeding.
- (10) **Gateway Sustainability Display** - The Contractor was issued substantial completion on December 22, 2023. Punch list items are currently being completed.
- (11) **Replace PVC Roof Membrane on NS1** - The Contractor anticipates starting the roofing membrane work by January 22, 2024. Completion date for this project is April 24, 2024.
- (12) **Replace PVC Roof Membrane & Greenhouse Panels on NS14** - The Contractor anticipates starting the roofing membrane work by January 22, 2024. Completion date for this project is April 24, 2024.
- (13) **Toilet Carriers Upgrades** - The Contractor continues with work on the secure side of the terminal. The project is 85% complete. The anticipated completion date for this project is May 2, 2024.
- (14) **Concourse B Maintenance T.I.** - The bid opening for this project was held on November 16, 2023. The apparent low bidder is AIS Commercial. Contract documents are currently being executed.



**SALT LAKE CITY INTERNATIONAL AIRPORT  
AIR TRAFFIC STATISTICS AND ACTIVITY REPORT  
TEN MONTHS ENDED OCTOBER 2023**

	October 2023	CHANGE	Year to date 2023	CHANGE	12 MO ROLLING Ending 10/2023	CHANGE
<b>PASSENGERS</b>						
<i>DOMESTIC</i>						
Enplaned - Local	780,599	7.57%	7,619,296	6.47%	8,983,591	6.60%
Enplaned - Connections	386,149	1.87%	3,643,048	-1.10%	4,309,515	-2.53%
Less International Enplaned	-61,286 1,105,462	 4.89%	-560,947 10,701,397	 3.45%	-655,780 12,637,326	 2.83%
Deplaned - Local	768,245	3.02%	7,704,324	8.35%	9,125,530	8.54%
Deplaned - Connection	386,149	1.87%	3,643,048	-1.10%	4,309,515	-2.53%
Less International Deplaned	-52,234 1,102,160	 2.91%	-566,477 10,780,895	 4.89%	-654,149 12,780,896	 4.33%
<b>TOTAL DOMESTIC</b>	<b>2,207,622</b>	<b>3.89%</b>	<b>21,482,292</b>	<b>4.17%</b>	<b>25,418,222</b>	<b>3.58%</b>
<i>INTERNATIONAL</i>						
Enplaned	61,286	20.80%	560,947	13.24%	655,780	17.20%
Deplaned	52,234	-2.87%	566,477	9.83%	654,149	13.04%
<b>TOTAL INTERNATIONAL</b>	<b>113,520</b>	<b>8.62%</b>	<b>1,127,424</b>	<b>11.50%</b>	<b>1,309,929</b>	<b>15.08%</b>
<b>TOTAL PASSENGERS</b>	<b>2,321,142</b>	<b>4.11%</b>	<b>22,609,716</b>	<b>4.51%</b>	<b>26,728,151</b>	<b>4.09%</b>
<b>LANDED WEIGHT</b>						
Air Carriers	1,293,599,663	8.94%	12,397,635,972	4.39%	14,684,852,505	3.32%
Cargo Carriers	78,112,624	-18.76%	842,418,753	-17.59%	1,085,903,109	-16.87%
<b>TOTAL LANDED WEIGHT (LBS)</b>	<b>1,371,712,287</b>	<b>6.87%</b>	<b>13,240,054,725</b>	<b>2.65%</b>	<b>15,770,755,614</b>	<b>1.62%</b>
<b>MAIL</b>						
Enplaned	779,664	-69.97%	14,336,459	-45.74%	18,621,882	-40.29%
Deplaned	397,542	-76.00%	9,170,072	-39.12%	12,238,066	-31.80%
<b>TOTAL MAIL (LBS)</b>	<b>1,177,206</b>	<b>-72.32%</b>	<b>23,506,531</b>	<b>-43.34%</b>	<b>30,859,948</b>	<b>-37.19%</b>
<b>CARGO</b>						
Enplaned	13,420,923	-8.41%	133,067,307	-13.70%	168,619,495	-12.24%
Deplaned	14,040,447	-15.33%	136,269,855	-17.34%	172,630,142	-15.54%
<b>TOTAL CARGO (LBS)</b>	<b>27,461,370</b>	<b>-12.08%</b>	<b>269,337,162</b>	<b>-15.58%</b>	<b>341,249,637</b>	<b>-13.94%</b>
<b>MAIL &amp; CARGO</b>						
Enplaned	6,710	-8.42%	66,534	-13.70%	84,310	-12.24%
Deplaned	7,020	-15.33%	68,135	-17.34%	86,315	-15.54%
<b>TOTAL MAIL &amp; CARGO (TONS)</b>	<b>13,730</b>	<b>-12.09%</b>	<b>134,669</b>	<b>-15.58%</b>	<b>170,625</b>	<b>-13.94%</b>
<b>AIRCRAFT OPERATIONS</b>						
Passenger Aircraft	20,276	5.10%	196,228	0.17%	232,788	-0.92%
All-Cargo Aircraft	1,332	-4.45%	13,218	-14.45%	16,454	-15.41%
General Aviation	5,032	-14.74%	53,214	-7.10%	63,763	-7.51%
Military	259	12.61%	4,029	45.56%	4,304	36.03%
<b>TOTAL AIRCRAFT OPERATIONS</b>	<b>26,899</b>	<b>0.30%</b>	<b>266,689</b>	<b>-1.73%</b>	<b>317,309</b>	<b>-2.82%</b>

**SALT LAKE CITY INTERNATIONAL AIRPORT  
PASSENGER TRAFFIC REPORT  
TEN MONTHS ENDED OCTOBER 2023**

	October 2022	October 2023	% CHANGE	Year to date 2022	Year to date 2023	% CHANGE	12 MO ROLLING Ending 10/2023	% CHANGE
<b>ENPLANED PASSENGERS</b>								
AEROMEXICO	2,818	-	-100.0%	25,682	19,215	-25.2%	24,775	-21.0%
AIR CANADA	978	1,224	25.2%	5,820	8,211	41.1%	9,960	71.1%
ALASKA	15,096	17,330	14.8%	113,806	145,332	27.7%	170,239	27.4%
Horizon Air / Alaska	-	-	0.0%	8,609	146	-98.3%	146	-98.9%
Skywest / Alaska	8,261	4,288	-48.1%	127,810	94,060	-26.4%	107,605	-27.9%
AMERICAN	48,832	46,006	-5.8%	445,991	498,873	11.9%	597,530	12.1%
Envoy Air	-	-	0.0%	4,990	3,092	-38.0%	3,092	-63.5%
American/Mesa Air	1,048	-	-100.0%	13,607	6,460	-52.5%	6,460	-53.3%
Republic	-	-	0.0%	-	-	0.0%	-	0.0%
SkyWest (American)	4,247	5,746	35.3%	43,437	42,915	-1.2%	42,915	-29.3%
DELTA	638,777	685,650	7.3%	6,324,751	6,627,861	4.8%	7,843,002	4.6%
SkyWest (Delta Connection)	155,574	139,727	-10.2%	1,540,741	1,305,635	-15.3%	1,569,297	-15.8%
EUROWINGS DISCOVER	560	-	-100.0%	10,654	7,700	-27.7%	7,700	-27.7%
FRONTIER	17,051	31,341	83.8%	159,176	217,993	37.0%	257,527	35.0%
JETBLUE	22,075	24,406	10.6%	239,917	264,558	10.3%	308,478	13.2%
KLM ROYAL DUTCH AIRLINES	2,915	3,756	28.9%	29,944	30,979	3.5%	30,979	3.5%
SOUTHWEST	121,231	127,310	5.0%	1,146,617	1,222,757	6.6%	1,428,644	5.7%
SPIRIT	19,102	19,717	3.2%	95,277	186,083	95.3%	214,277	124.9%
UNITED	16,760	40,414	141.1%	218,622	370,126	69.3%	410,463	68.5%
Mesa Airlines (United Express)	2,150	1,925	-10.5%	17,394	3,827	-78.0%	3,827	-79.1%
Republic Airways (United)	-	-	0.0%	345	-	-100.0%	-	-100.0%
SkyWest (United Express)	26,579	17,490	-34.2%	264,673	203,609	-23.1%	252,670	-20.9%
Charters	645	418	-35.2%	2,146	2,912	35.7%	3,520	63.9%
West Coast Charters	-	0	0.0%	-	0	0.0%	0	0.0%
<b>TOTAL ENPLANED PASSENGERS</b>	<b>1,104,699</b>	<b>1,166,748</b>	<b>5.6%</b>	<b>10,840,009</b>	<b>11,262,344</b>	<b>3.9%</b>	<b>13,293,106</b>	<b>3.5%</b>
AeroMexico	3,210	-	-100.0%	35,691	30,405	-14.8%	36,464	-13.9%
AIR CANADA	1,194	1,633	36.8%	6,049	8,327	37.7%	10,087	66.8%
ALASKA AIR	15,418	17,911	16.2%	115,382	140,771	22.0%	166,744	23.1%
Horizon Air / Alaska	-	-	0.0%	8,519	136	-98.4%	136	-99.0%
Skywest / Alaska	7,966	3,877	-51.3%	124,747	90,308	-27.6%	104,136	-29.4%
AMERICAN	47,063	45,399	-3.5%	438,502	498,405	13.7%	598,814	13.8%
Envoy Air (American)	-	-	0.0%	5,744	3,320	-42.2%	3,320	-63.5%
Mesa Air	1,042	-	-100.0%	14,154	6,403	-54.8%	6,403	-55.5%
Republic	-	-	0.0%	-	-	0.0%	-	0.0%
SkyWest (American)	4,113	5,608	36.3%	43,199	42,125	-2.5%	42,125	-30.2%
DELTA	661,966	674,881	2.0%	6,273,091	6,704,546	6.9%	7,967,669	6.7%
SkyWest (Delta Connection)	158,772	141,504	-10.9%	1,554,589	1,316,101	-15.3%	1,582,107	-15.6%
EUROWINGS DISCOVER	483	-	-100.0%	11,773	8,074	-31.4%	8,074	-31.4%
FRONTIER	16,930	31,782	87.7%	159,299	219,957	38.1%	259,029	35.6%
JETBLUE	21,179	24,264	14.6%	233,176	266,234	14.2%	311,141	16.7%
KLM ROYAL DUTCH AIRLINES	4,161	4,462	7.2%	36,239	33,110	-8.6%	33,110	-8.6%
SOUTHWEST	116,852	124,007	6.1%	1,135,520	1,217,381	7.2%	1,424,352	6.1%
SPIRIT	18,591	19,868	6.9%	96,381	189,128	96.2%	217,671	125.8%
UNITED	16,282	39,960	145.4%	216,368	364,558	68.5%	405,829	68.0%
Mesa Airlines / United Express	2,314	1,924	-16.9%	18,709	3,922	-79.0%	3,922	-80.1%
Republic Airways (United)	-	-	0.0%	317	-	-100.0%	-	-100.0%
SkyWest (United Express)	26,446	17,307	-34.6%	264,269	201,913	-23.6%	250,924	-21.9%
Charters	780	7	-99.1%	2,621	2,248	-14.2%	2,988	14.0%
West Coast Charters	-	0	0.0%	-	0	0.0%	0	0.0%
<b>TOTAL DEPLANED PASSENGERS</b>	<b>1,124,762</b>	<b>1,154,394</b>	<b>2.6%</b>	<b>10,794,339</b>	<b>11,347,372</b>	<b>5.1%</b>	<b>13,435,045</b>	<b>4.7%</b>
<b>TOTAL PASSENGERS*</b>	<b>2,229,461</b>	<b>2,321,142</b>	<b>4.1%</b>	<b>21,634,348</b>	<b>22,609,716</b>	<b>4.5%</b>	<b>26,728,151</b>	<b>4.1%</b>
<b>INTERNATIONAL - ENPLANED</b>								
AEROMEXICO	2,818	-	-100.0%	25,682	19,215	-25.2%	24,775	-21.0%
AIR CANADA	978	1,224	25.2%	5,820	8,211	41.1%	9,960	71.1%
DELTA	43,462	53,116	22.2%	405,744	464,625	14.5%	551,118	19.5%
SkyWest (Delta Connection)	-	3,190	100.0%	17,398	30,203	73.6%	31,234	51.6%
EUROWINGS DISCOVER	560	-	-100.0%	10,654	7,700	-27.7%	7,700	-27.7%
KLM ROYAL DUTCH AIRLINES	2,915	3,756	28.9%	29,944	30,979	3.5%	30,979	3.5%
Charters	-	-	0.0%	-	-	0.0%	-	0.0%
<b>TOTAL ENPLANED INTERNATIONAL</b>	<b>50,733</b>	<b>61,286</b>	<b>20.8%</b>	<b>495,242</b>	<b>560,933</b>	<b>13.3%</b>	<b>655,766</b>	<b>17.2%</b>
AEROMEXICO	3,210	-	-100.0%	35,691	30,405	-14.8%	36,464	-13.9%
AIR CANADA	1,194	1,633	36.8%	6,049	8,327	37.7%	10,087	66.8%
DELTA	44,732	42,516	-5.0%	405,346	457,025	12.7%	535,816	16.8%
SkyWest (Delta Connection)	-	3,623	100.0%	20,552	29,532	43.7%	30,594	29.7%
EUROWINGS DISCOVER	483	-	-100.0%	11,773	8,074	-31.4%	8,074	-31.4%
KLM ROYAL DUTCH AIRLINES	4,161	4,462	7.2%	36,239	33,110	-8.6%	33,110	-8.6%
Charters	-	-	0.0%	-	-	0.0%	-	0.0%
<b>TOTAL DEPLANED INTERNATIONAL</b>	<b>53,780</b>	<b>52,234</b>	<b>-2.9%</b>	<b>515,650</b>	<b>566,473</b>	<b>9.9%</b>	<b>654,145</b>	<b>13.1%</b>
<b>TOTAL INTERNATIONAL PASSENGERS</b>	<b>104,513</b>	<b>113,520</b>	<b>8.6%</b>	<b>1,010,892</b>	<b>1,127,406</b>	<b>11.5%</b>	<b>1,309,911</b>	<b>15.1%</b>

\*Includes International

**SALT LAKE CITY INTERNATIONAL AIRPORT**  
**TEN MONTHS ENDED OCTOBER 2023**  
Based on Total Enplanements

**MARKET SHARE**

	October 2022	MARKET SHARE	October 2023	MARKET SHARE	Year to date 2022	MARKET SHARE	Year to date 2023	MARKET SHARE	12 MO ROLLING Ending 10/2022	12 MO ROLLING Ending 10/2023	MARKET SHARE
AEROMEXICO	2,818	0.26%	-	0.00%	25,682	0.24%	19,215	0.17%	31,374	24,775	0.19%
ALASKA	23,357	2.11%	21,618	1.85%	250,225	2.31%	239,538	2.13%	296,383	277,990	2.09%
AMERICAN	54,127	4.90%	51,752	4.44%	508,025	4.69%	551,340	4.90%	616,104	649,997	4.89%
DELTA	794,351	71.91%	825,377	70.74%	7,865,492	72.56%	7,933,496	70.44%	9,363,665	9,412,299	70.81%
EUROWINGS DISCOVER	560	0.05%	-	0.00%	10,654	0.10%	7,700	0.07%	10,654	7,700	0.06%
FRONTIER	17,051	1.54%	31,341	2.69%	159,176	1.47%	217,993	1.94%	190,698	257,527	1.94%
JETBLUE	22,075	2.00%	24,406	2.09%	239,917	2.21%	264,558	2.35%	272,532	308,478	2.32%
KLM ROYAL DUTCH	2,915	0.26%	3,756	0.32%	29,944	0.28%	30,979	0.28%	29,944	30,979	0.23%
SOUTHWEST	121,231	10.97%	127,310	10.91%	1,146,617	10.58%	1,222,757	10.86%	1,351,805	1,428,644	10.75%
SPIRIT	19,102	1.73%	19,717	1.69%	95,277	0.88%	186,083	1.65%	95,277	214,277	1.61%
UNITED	45,489	4.12%	59,829	5.13%	501,034	4.62%	577,562	5.13%	582,788	666,960	5.02%
Charters	645	0.06%	418	0.04%	2,146	0.02%	2,912	0.03%	2,147	3,520	0.03%
<b>TOTAL ENPLANEMENTS</b>	<b>1,104,699</b>	<b>100%</b>	<b>1,166,748</b>	<b>100%</b>	<b>10,840,009</b>	<b>100%</b>	<b>11,262,344</b>	<b>100%</b>	<b>12,849,191</b>	<b>13,293,106</b>	<b>100%</b>

**PERCENT CHANGE YOY**

	October 2022	October 2023	PERCENT CHANGE	YTD 2022	YTD 2023	PERCENT CHANGE	12 MO ROLLING Ending 10/2022	12 MO ROLLING Ending 10/2023	PERCENT CHANGE
AEROMEXICO	2,818	-	-100.00%	25,682	19,215	-25.18%	31,374	24,775	-21.03%
ALASKA	23,357	21,618	-7.45%	250,225	239,538	-4.27%	296,383	277,990	-6.21%
AMERICAN	54,127	51,752	-4.39%	508,025	551,340	8.53%	616,104	649,997	5.50%
DELTA	794,351	825,377	3.91%	7,865,492	7,933,496	0.86%	9,363,665	9,412,299	0.52%
EUROWINGS DISCOVER	560	-	-100.00%	10,654	7,700	-27.73%	10,654	7,700	-27.73%
FRONTIER	17,051	31,341	83.81%	159,176	217,993	36.95%	190,698	257,527	35.04%
JETBLUE	22,075	24,406	10.56%	239,917	264,558	10.27%	272,532	308,478	13.19%
KLM ROYAL DUTCH	2,915	3,756	0.00%	29,944	30,979	0.00%	29,944	30,979	3.46%
SOUTHWEST	121,231	127,310	5.01%	1,146,617	1,222,757	6.64%	1,351,805	1,428,644	5.68%
SPIRIT	19,102	19,717	3.22%	95,277	186,083	95.31%	95,277	214,277	124.90%
UNITED	45,489	59,829	31.52%	501,034	577,562	15.27%	582,788	666,960	14.44%
Charters	645	418	-35.19%	2,146	2,912	35.69%	2,147	3,520	63.95%
<b>TOTAL ENPLANEMENTS</b>	<b>1,104,699</b>	<b>1,166,748</b>	<b>5.6%</b>	<b>10,840,009</b>	<b>11,262,344</b>	<b>3.9%</b>	<b>12,849,191</b>	<b>13,293,106</b>	<b>3.5%</b>



**SALT LAKE CITY INTERNATIONAL AIRPORT  
LANDING ACTIVITY  
TEN MONTHS ENDED OCTOBER 2023**

	October 2022	October 2023	CHANGE	Year to date 2022	Year to date 2023	CHANGE	12 MO ROLLING Ending 10/2023	% CHANGE
<b>TOTAL NUMBER OF LANDINGS</b>								
<b>SCHEDULED CARRIERS</b>								
AEROMEXICO	30	-	-100.0%	302	221	-26.8%	282	-22.3%
AIR CANADA	13	12	-7.7%	65	72	10.8%	98	50.8%
ALASKA	116	118	1.7%	828	982	18.6%	1,182	16.8%
Horizon Air / Alaska	-	-	0.0%	121	2	-98.3%	2	-98.8%
Skywest / Alaska	120	64	-46.7%	1,948	1,333	-31.6%	1,544	-33.3%
AMERICAN	292	270	-7.5%	2,656	2,994	12.7%	3,713	15.4%
Mesa Air (American)	14	-	-100.0%	189	71	-62.4%	71	-63.0%
Envoy Air (American)	-	-	0.0%	86	44	-48.8%	44	-67.6%
Republic/ (American)	-	-	0.0%	-	-	0.0%	-	0.0%
SkyWest (American)	68	88	29.4%	718	712	-0.8%	712	-29.7%
DELTA	4,251	4,761	12.0%	43,375	46,208	6.5%	54,723	5.5%
SkyWest (Delta Connection)	2,640	2,346	-11.1%	26,585	22,155	-16.7%	26,692	-17.2%
EUROWINGS DISCOVER	4	-	-100.0%	47	36	-23.4%	36	-23.4%
FRONTIER	104	184	76.9%	1,031	1,299	26.0%	1,537	24.6%
JETBLUE	146	179	22.6%	1,584	1,909	20.5%	2,213	20.1%
KLM ROYAL DUTCH AIRLINES	12	12	0.0%	91	93	2.2%	93	2.2%
SOUTHWEST	911	1,045	14.7%	8,907	9,934	11.5%	11,649	10.1%
SPIRIT	120	120	0.0%	628	1,202	91.4%	1,390	121.3%
UNITED	125	298	138.4%	1,584	2,655	67.6%	2,941	65.8%
Mesa / United Express	33	29	-12.1%	263	58	-77.9%	58	-79.0%
Republic Airways Holdings	-	-	0.0%	5	-	-100.0%	-	-100.0%
SkyWest (United Express)	406	297	-26.8%	4,126	3,164	-23.3%	3,931	-22.6%
Trans States	-	-	0.0%	-	-	0.0%	-	0.0%
<b>SUBTOTAL SCHEDULED CARRIERS:</b>	<b>9,405</b>	<b>9,823</b>	<b>4.4%</b>	<b>95,139</b>	<b>95,144</b>	<b>0.0%</b>	<b>112,911</b>	<b>-1.1%</b>
<b>CHARTER CARRIERS</b>								
ALLEGiant AIR	6	-	-100.0%	8	2	-75.0%	6	-25.0%
BOMBARDIER BUSINESS JETS	44	135	206.8%	629	731	16.2%	817	11.0%
BOUTIQUE AIR	-	-	0.0%	-	-	0.0%	-	0.0%
DELTA PRIVATE JETS	-	-	0.0%	-	-	0.0%	-	0.0%
EXECUTIVE JET MANAGEMENT	-	-	0.0%	-	-	0.0%	-	0.0%
FLIGHT OPTIONS	-	-	0.0%	-	-	0.0%	-	0.0%
KALITTA CHARTERS	2	1	-50.0%	20	13	-35.0%	16	-48.4%
KEYLIME AIR	-	-	0.0%	8	-	-100.0%	2	-75.0%
NETJETS	178	170	-4.5%	1,848	2,084	12.8%	2,482	12.2%
SUNSET AVIATION	-	-	0.0%	-	-	0.0%	-	0.0%
SWIFT AIR	-	-	0.0%	-	-	0.0%	-	0.0%
SUN COUNTRY	5	8	60.0%	36	63	75.0%	65	80.6%
XOJET	-	-	0.0%	251	82	-67.3%	96	-68.2%
OTHER CHARTER	-	-	0.0%	2	5	150.0%	5	66.7%
<b>SUBTOTAL CHARTER CARRIERS:</b>	<b>235</b>	<b>314</b>	<b>33.6%</b>	<b>2,802</b>	<b>2,980</b>	<b>6.4%</b>	<b>3,489</b>	<b>4.6%</b>
<b>CARGO CARRIERS</b>								
ABX AIR INC	1	2	100.0%	13	7	-46.2%	8	-46.7%
AIRNET 11 LLC	10	11	10.0%	49	56	14.3%	71	12.7%
ALPINE AVIATION	174	208	19.5%	2,049	1,968	-4.0%	2,367	-6.1%
AMERIFLIGHT	21	22	4.8%	226	219	-3.1%	262	-3.7%
AMERIJET INTERTIONAL	19	-	-100.0%	144	5	-96.5%	44	-74.6%
CORPORATE AIR (BILLINGS)	124	130	4.8%	1,277	1,254	-1.8%	1,503	-4.0%
EMPIRE	16	18	12.5%	169	172	1.8%	209	1.5%
FEDERAL EXPRESS	131	126	-3.8%	1,388	1,264	-8.9%	1,573	-9.2%
GEM AIR	37	33	-10.8%	534	278	-47.9%	346	-53.7%
GLOBAL CROSSING AIRLINES	-	-	0.0%	-	111	100.0%	111	100.0%
NORTHERN AIR CARGO	23	20	-13.0%	251	110	-56.2%	158	-47.2%
UPS	121	95	-21.5%	1,361	1,105	-18.8%	1,447	-17.7%
WESTERN AIR EXPRESS	20	-	-100.0%	231	26	-88.7%	83	-74.8%
OTHER CARGO	6	2	-66.7%	37	24	-35.1%	39	-7.1%
<b>SUBTOTAL CARGO CARRIERS:</b>	<b>703</b>	<b>667</b>	<b>-5.1%</b>	<b>7,729</b>	<b>6,599</b>	<b>-14.6%</b>	<b>8,221</b>	<b>-15.4%</b>
<b>TOTAL LANDINGS</b>	<b>10,343</b>	<b>10,804</b>	<b>4.5%</b>	<b>105,670</b>	<b>104,723</b>	<b>-0.9%</b>	<b>124,621</b>	<b>-2.0%</b>
<b>TOTAL LANDED WEIGHT</b>								
<b>SCHEDULED CARRIERS</b>								
AEROMEXICO	2,843,940	-	-100.0%	28,628,996	20,950,358	-26.8%	26,733,036	-22.3%
AIR CANADA	2,002,000	1,848,000	-7.7%	9,982,000	11,088,000	11.1%	15,092,000	51.2%
ALASKA	17,683,396	18,442,100	4.3%	124,004,148	151,627,400	22.3%	182,127,302	19.6%
Horizon Air / Alaska	-	-	0.0%	9,069,797	149,914	-98.3%	149,914	-98.8%
Skywest / Alaska	8,994,840	4,797,248	-46.7%	146,016,236	99,917,681	-31.6%	115,733,608	-33.3%
AMERICAN	46,822,500	44,988,992	-3.9%	428,536,670	489,265,806	14.2%	595,283,670	15.1%
Envoy Air (American)	-	-	0.0%	6,440,420	3,297,800	-48.8%	3,297,800	-67.6%
American/Mesa Air	1,043,400	-	-100.0%	14,064,300	5,304,900	-62.3%	5,304,900	-62.9%
Republic (American)	-	-	0.0%	-	-	0.0%	-	0.0%
SkyWest (American)	4,556,000	6,325,300	38.8%	48,586,850	49,659,700	2.2%	49,659,700	-27.9%
DELTA	678,009,818	746,779,739	10.1%	6,866,643,545	7,218,307,493	5.1%	8,569,571,620	4.0%
SkyWest (Delta Connection)	185,138,088	171,463,662	-7.4%	1,830,708,635	1,588,952,364	-13.2%	1,909,666,785	-13.7%
EUROWINGS DISCOVER	1,645,600	-	-100.0%	19,192,800	14,634,400	-23.8%	14,634,400	-23.8%
FRONTIER	14,847,232	27,905,168	87.9%	151,297,338	190,076,274	25.6%	224,623,078	22.4%
JETBLUE	20,761,200	25,571,076	23.2%	225,244,800	271,041,155	20.3%	314,269,955	20.0%

**SALT LAKE CITY INTERNATIONAL AIRPORT  
LANDING ACTIVITY  
TEN MONTHS ENDED OCTOBER 2023**

	October 2022	October 2023	CHANGE	Year to date 2022	Year to date 2023	CHANGE	12 MO ROLLING Ending 10/2023	% CHANGE
KLM ROYAL DUTCH AIRLINES	5,143,524	5,227,501	1.6%	38,864,180	39,771,584	2.3%	39,771,584	2.3%
SOUTHWEST	123,551,300	144,296,900	16.8%	1,209,383,300	1,356,359,900	12.2%	1,592,554,100	10.9%
SPIRIT	17,063,760	17,063,760	0.0%	89,300,344	170,904,360	91.4%	197,637,584	121.3%
UNITED	17,603,700	45,048,300	155.9%	228,782,900	390,097,500	70.5%	431,851,000	68.9%
Mesa / United Express	2,475,000	2,175,000	-12.1%	19,725,000	4,288,020	-78.3%	4,288,020	-79.3%
Republic Airways Holdings	-	-	0.0%	364,200	-	-100.0%	-	-100.0%
SkyWest (United Express)	27,859,422	20,102,873	-27.8%	285,518,589	222,607,165	-22.0%	276,232,944	-20.6%
Trans States	-	-	0.0%	-	-	0.0%	-	0.0%
<b>SUBTOTAL SCHEDULED CARRIERS:</b>	<b>1,178,044,720</b>	<b>1,282,035,619</b>	<b>8.8%</b>	<b>11,780,355,048</b>	<b>12,298,301,774</b>	<b>4.4%</b>	<b>14,568,483,000</b>	<b>3.3%</b>
<b>CHARTER CARRIERS</b>								
ALLEGIAN AIR	843,265	0	-100.0%	1,134,275	279,986	-75.3%	850,982	-25.0%
AMERISTAR	-	-	0.0%	107,000	-	-100.0%	-	-100.0%
BOEING COMMERCIAL AIRPLANE	-	-	0.0%	-	-	0.0%	-	-100.0%
BOMBARDIER	1,609,934	5,025,527	212.2%	21,863,900	25,088,572	14.7%	28,145,737	9.6%
BOUTIQUE AIR	-	-	0.0%	-	-	0.0%	-	0.0%
DELTA PRIVATE JETS	-	-	0.0%	-	-	0.0%	-	0.0%
EXECUTIVE JET MANAGEMENT	-	-	0.0%	-	-	0.0%	-	0.0%
FLIGHT OPTIONS	-	-	0.0%	-	-	0.0%	-	0.0%
KALITTA CHARTERS	285,000	15,300	-94.6%	710,300	213,020	-70.0%	365,320	-67.7%
KEYLIME AIR	-	-	0.0%	301,500	-	-100.0%	63,448	-79.0%
MIAMI AIR	-	-	0.0%	-	-	0.0%	-	0.0%
NETJETS	5,050,122	5,080,117	0.6%	54,182,314	60,308,840	11.3%	71,757,338	9.5%
SIERRA PACIFIC	-	-	0.0%	110,000	550,000	400.0%	550,000	400.0%
SUN COUNTRY	731,500	1,170,400	60.0%	5,215,500	9,165,600	75.7%	9,458,200	81.3%
SWIFT AIR	-	-	0.0%	-	-	0.0%	-	0.0%
VIRGIN AMERICA	-	-	0.0%	-	-	0.0%	-	0.0%
XOJET	-	-	0.0%	9,242,800	3,637,200	-60.6%	4,231,800	-62.4%
OTHER CHARTER	-	-	0.0%	-	-	0.0%	-	0.0%
<b>SUBTOTAL CHARTER CARRIERS:</b>	<b>8,519,821</b>	<b>11,291,344</b>	<b>32.5%</b>	<b>92,867,589</b>	<b>99,243,218</b>	<b>6.9%</b>	<b>115,422,825</b>	<b>4.3%</b>
<b>CARGO CARRIERS</b>								
ABX AIR INC	272,000	544,000	100.0%	3,602,000	1,915,000	-47.5%	2,187,000	-47.5%
AIRNET 11	155,100	169,000	9.0%	761,600	867,300	13.9%	1,098,900	12.2%
ALPINE AVIATION	2,359,400	2,844,400	20.6%	28,220,500	27,046,400	-4.2%	32,685,100	-6.2%
AMERIFLIGHT	338,100	334,400	-1.1%	3,621,888	3,480,900	-3.9%	4,154,000	-4.9%
AMERIJET INTERNATIONAL	5,168,000	-	-100.0%	39,222,000	1,360,000	-96.5%	11,968,000	-74.6%
AMERISTAR	-	-	0.0%	81,700	463,100	466.8%	1,116,700	173.4%
ATLAS AIR	-	-	0.0%	-	1,260,000	100.0%	1,260,000	286.5%
CORPORATE AIR (BILLINGS)	1,054,000	1,105,000	4.8%	10,854,500	10,659,000	-1.8%	12,775,500	-4.0%
EMPIRE	753,088	847,224	12.5%	7,943,579	8,035,302	1.2%	9,776,818	0.9%
FEDEX EXPRESS	45,316,400	42,213,400	-6.8%	474,840,400	419,972,700	-11.6%	523,163,900	-11.8%
GEM AIR	314,500	262,900	-16.4%	4,518,000	2,279,400	-49.5%	2,857,400	-54.3%
GLOBAL CROSSING AIRLINES	-	-	0.0%	-	19,862,691	100.0%	19,862,691	100.0%
NORTHERN AIR CARGO	2,763,000	2,420,000	-12.4%	30,351,000	13,910,500	-54.2%	19,714,500	-45.5%
SWIFT AIR	864,000	288,000	-66.7%	5,184,000	2,114,000	-59.2%	3,122,000	-39.8%
UPS	37,388,400	27,357,000	-26.8%	412,782,420	328,943,440	-20.3%	440,012,280	-19.8%
WESTERN AIR EXPRESS	266,000	-	-100.0%	3,004,480	340,000	-88.7%	1,095,000	-74.6%
OTHER CARGO	-	-	0.0%	-	-	0.0%	-	0.0%
<b>SUBTOTAL CARGO CARRIERS:</b>	<b>97,011,988</b>	<b>78,385,324</b>	<b>-19.2%</b>	<b>1,024,988,067</b>	<b>842,509,733</b>	<b>-17.8%</b>	<b>1,086,849,789</b>	<b>-17.0%</b>
<b>TOTAL LANDED WEIGHT</b>	<b>1,283,576,529</b>	<b>1,371,712,287</b>	<b>6.9%</b>	<b>12,898,210,704</b>	<b>13,240,054,725</b>	<b>2.7%</b>	<b>15,770,755,614</b>	<b>1.6%</b>

**SALT LAKE CITY INTERNATIONAL AIRPORT  
CARGO ACTIVITY REPORT  
TEN MONTHS ENDED OCTOBER 2023**

	October 2022	October 2023	CHANGE	Year to date 2022	Year to date 2023	CHANGE	12 MO ROLLING Ending 10/2023	% CHANGE
<b>ENPLANED CARGO</b>								
<b>PASSENGER CARRIERS</b>								
ALASKA	10,154	12,816	26.22%	84,492	111,365	31.81%	124,552	29.84%
Horizon Air / Alaska	-	-	0.00%	4,118	-	-100.00%	-	-100.00%
Skywest / Alaska	548	-	-100.00%	18,192	19,427	6.79%	21,479	3.51%
AMERICAN	8,346	3,274	-60.77%	72,515	59,823	-17.50%	75,155	-10.21%
American Eagle/Republic	-	-	0.00%	-	-	0.00%	-	0.00%
Envoy Air (American)	-	-	0.00%	-	-	0.00%	-	0.00%
Mesa	-	-	0.00%	-	251	100.00%	251	100.00%
SkyWest (American)	266	637	139.47%	6,022	6,219	3.27%	6,219	-25.46%
DELTA	434,244	750,023	72.72%	6,865,393	7,245,118	5.53%	8,727,862	9.17%
EW DISCOVER GMBH	-	-	-	-	181,535	100.00%	181,535	100.00%
FRONTIER	-	-	0.00%	-	-	0.00%	-	0.00%
KLM ROYAL DUTCH	104,275	103,592	-0.65%	892,138	671,955	-24.68%	671,955	-24.68%
SOUTHWEST	426,866	442,568	3.68%	3,659,581	4,342,396	18.66%	5,110,455	19.16%
UNITED	11,046	5,775	-47.72%	76,753	50,417	-34.31%	101,187	-0.92%
Others	47,061	-	-100.00%	71,758	-	-100.00%	17,203	-80.64%
<b>CARGO CARRIERS</b>								
FEDEX EXPRESS*	7,772,262	7,036,323	-9.47%	82,182,379	71,119,558	-13.46%	88,961,216	-12.37%
GEM AIR	22,865	14,143	-38.15%	468,813	143,255	-69.44%	186,161	-70.06%
GLOBAL CROSSING	-	-	0.00%	-	26,306	100.00%	26,306	100.00%
SWIFT AIR	18,814	-	-100.00%	145,396	29,676	-79.59%	35,109	-75.85%
UPS	4,766,092	4,193,964	-12.00%	48,975,210	40,801,265	-16.69%	53,817,542	-14.63%
MISC CARGO	1,030,577	857,808	-16.76%	10,667,841	8,258,741	-22.58%	10,555,308	-20.13%
<b>TOTAL ENPLANED CARGO (LBS)</b>	<b>14,653,416</b>	<b>13,420,923</b>	<b>-8.41%</b>	<b>154,190,601</b>	<b>133,067,307</b>	<b>-13.70%</b>	<b>168,619,495</b>	<b>-12.24%</b>
<b>DEPLANED CARGO</b>								
<b>PASSENGER CARRIERS</b>								
ALASKA	19,748	31,411	59.06%	169,560	162,050	-4.43%	194,595	-0.29%
Horizon Air / Alaska	-	-	0.00%	5,716	-	-100.00%	-	-100.00%
Skywest / Alaska	1,032	609	-40.99%	24,108	31,142	29.18%	38,445	23.88%
AMERICAN	38,200	24,420	-36.07%	369,031	294,222	-20.27%	378,161	-11.89%
American Eagle/Republic	-	-	0.00%	-	-	0.00%	-	0.00%
Envoy	-	-	0.00%	9	255	2733.33%	255	-61.31%
Mesa (American)	-	-	0.00%	933	559	-40.09%	559	-40.09%
SkyWest (American)	269	272	1.12%	4,654	2,847	-38.83%	2,847	-59.57%
DELTA	1,179,438	1,210,453	2.63%	10,730,952	9,567,855	-10.84%	11,705,097	-6.05%
SkyWest (Delta Connection)	-	-	0.00%	-	-	0.00%	-	0.00%
Compass (Delta Connection)	-	-	0.00%	-	-	0.00%	-	0.00%
EW DISCOVER GMBH	-	-	0.00%	-	131,425	100.00%	131,425	100.00%
KLM ROYAL DUTCH	245,191	133,821	-45.42%	1,565,124	848,120	-45.81%	848,120	-45.81%
SOUTHWEST	335,650	358,470	6.80%	3,581,563	3,504,023	-2.16%	4,190,783	-5.29%
UNITED	26,120	41,961	60.65%	249,405	262,986	5.45%	299,827	-7.10%
Others	30,901	-	-100.00%	67,977	5,522	-91.88%	33,979	-63.24%
<b>CARGO CARRIERS</b>								
FEDEX EXPRESS*	8,150,837	7,167,302	-12.07%	81,911,969	71,773,772	-12.38%	89,054,266	-11.50%
GEM AIR	2,111	900	-57.37%	100,318	11,300	-88.74%	15,124	-88.77%
GLOBAL CROSSING	-	-	0.00%	-	18,597	100.00%	18,597	100.00%
SWIFT AIR	144,743	50,657	-65.00%	911,730	342,897	-62.39%	515,301	-43.48%
UPS	5,456,530	4,646,992	-14.84%	55,878,125	45,480,275	-18.61%	59,195,032	-16.95%
MISC CARGO	951,356	373,179	-60.77%	9,281,206	3,832,008	-58.71%	6,007,729	-49.49%
ABX AIR	1,235	25,973	2003.08%	576,438	221,799	-61.52%	253,191	-61.73%
<b>TOTAL DEPLANED CARGO (LBS)</b>	<b>16,582,126</b>	<b>14,040,447</b>	<b>-15.33%</b>	<b>164,852,380</b>	<b>136,269,855</b>	<b>-17.34%</b>	<b>172,630,142</b>	<b>-15.54%</b>
<b>TOTAL CARGO LBS</b>	<b>31,235,542</b>	<b>27,461,370</b>	<b>-12.08%</b>	<b>319,042,981</b>	<b>269,337,162</b>	<b>-15.58%</b>	<b>341,249,637</b>	<b>-13.94%</b>

\*FEDEX EXPRESS includes mail



**SALT LAKE CITY INTERNATIONAL AIRPORT  
AIR TRAFFIC STATISTICS AND ACTIVITY REPORT  
ELEVEN MONTHS ENDED NOVEMBER 2023**

	November 2023	CHANGE	Year to date 2023	CHANGE	12 MO ROLLING Ending 11/2023	CHANGE
<b>PASSENGERS</b>						
<i>DOMESTIC</i>						
Enplaned - Local	636,179	-1.58%	8,255,475	5.80%	8,973,351	5.94%
Enplaned - Connections	412,144	13.59%	4,055,192	0.22%	4,358,829	-0.60%
Less International	-44,889		-605,836		-657,500	
Enplaned	1,003,434	3.87%	11,704,831	3.48%	12,674,680	3.19%
Deplaned - Local	676,437	2.49%	8,380,761	7.85%	9,141,995	8.01%
Deplaned - Connection	412,144	13.59%	4,055,192	0.22%	4,358,829	-0.60%
Less International	-42,617		-609,094		-659,592	
Deplaned	1,045,964	6.12%	11,826,859	5.00%	12,841,232	4.71%
<b>TOTAL DOMESTIC</b>	<b>2,049,398</b>	<b>5.01%</b>	<b>23,531,690</b>	<b>4.24%</b>	<b>25,515,912</b>	<b>3.95%</b>
<i>INTERNATIONAL</i>						
Enplaned	44,889	3.98%	605,836	12.50%	657,500	14.99%
Deplaned	42,617	14.64%	609,094	10.15%	659,592	12.76%
<b>TOTAL INTERNATIONAL</b>	<b>87,506</b>	<b>8.92%</b>	<b>1,214,930</b>	<b>11.31%</b>	<b>1,317,092</b>	<b>13.86%</b>
<b>TOTAL PASSENGERS</b>	<b>2,136,904</b>	<b>5.16%</b>	<b>24,746,620</b>	<b>4.56%</b>	<b>26,833,004</b>	<b>4.39%</b>
<b>LANDED WEIGHT</b>						
Air Carriers	1,208,868,163	6.97%	13,606,504,135	4.62%	14,763,635,031	4.19%
Cargo Carriers	85,479,828	-17.69%	927,898,581	-17.60%	1,067,537,073	-17.76%
<b>TOTAL LANDED WEIGHT (LBS)</b>	<b>1,294,347,991</b>	<b>4.90%</b>	<b>14,534,402,716</b>	<b>2.85%</b>	<b>15,831,172,104</b>	<b>2.35%</b>
<b>MAIL</b>						
Enplaned	664,411	-72.92%	15,000,870	-48.05%	16,833,225	-45.62%
Deplaned	387,474	-76.95%	9,557,546	-42.92%	10,944,877	-40.07%
<b>TOTAL MAIL (LBS)</b>	<b>1,051,885</b>	<b>-74.55%</b>	<b>24,558,416</b>	<b>-46.16%</b>	<b>27,778,102</b>	<b>-43.56%</b>
<b>CARGO</b>						
Enplaned	14,436,299	-10.30%	147,503,606	-13.38%	166,962,309	-12.86%
Deplaned	15,283,883	-8.60%	151,553,738	-16.53%	171,192,637	-15.89%
<b>TOTAL CARGO (LBS)</b>	<b>29,720,182</b>	<b>-9.43%</b>	<b>299,057,344</b>	<b>-15.01%</b>	<b>338,154,946</b>	<b>-14.42%</b>
<b>MAIL &amp; CARGO</b>						
Enplaned	7,218	-10.30%	73,752	-13.38%	83,481	-12.86%
Deplaned	7,642	-8.60%	75,777	-16.53%	85,596	-15.89%
<b>TOTAL MAIL &amp; CARGO (TONS)</b>	<b>14,860</b>	<b>-9.43%</b>	<b>149,529</b>	<b>-15.01%</b>	<b>169,077</b>	<b>-14.42%</b>
<b>AIRCRAFT OPERATIONS</b>						
Passenger Aircraft	18,870	4.22%	215,098	0.51%	233,552	0.01%
All-Cargo Aircraft	1,374	-6.02%	14,592	-13.72%	16,366	-14.77%
General Aviation	4,831	0.10%	58,045	-6.54%	63,768	-6.43%
Military	276	122.58%	4,305	48.86%	4,456	45.34%
<b>TOTAL AIRCRAFT OPERATIONS</b>	<b>25,351</b>	<b>3.40%</b>	<b>292,040</b>	<b>-1.31%</b>	<b>318,142</b>	<b>-1.79%</b>

**SALT LAKE CITY INTERNATIONAL AIRPORT  
PASSENGER TRAFFIC REPORT  
ELEVEN MONTHS ENDED NOVEMBER 2023**

	November 2022	November 2023	% CHANGE	Year to date 2022	Year to date 2023	% CHANGE	12 MO ROLLING Ending 11/2023	% CHANGE
<b>ENPLANED PASSENGERS</b>								
AEROMEXICO	2,833	-	-100.0%	28,515	19,215	-32.6%	21,942	-30.1%
AIR CANADA	804	-	-100.0%	6,624	8,211	24.0%	9,156	38.2%
ALASKA	12,869	14,082	9.4%	126,675	159,414	25.8%	171,452	25.4%
Horizon Air / Alaska	-	-	0.0%	8,609	146	-98.3%	146	-98.5%
Skywest / Alaska	6,981	4,506	-35.5%	134,791	98,566	-26.9%	105,130	-28.2%
AMERICAN	43,787	41,729	-4.7%	489,778	540,602	10.4%	595,472	10.8%
Envoy Air	-	-	0.0%	4,990	3,092	-38.0%	3,092	-55.4%
American/Mesa Air	-	-	0.0%	13,607	6,460	-52.5%	6,460	-53.1%
Republic	-	-	0.0%	-	-	0.0%	-	0.0%
SkyWest (American)	-	9,119	100.0%	43,437	52,034	19.8%	52,034	3.8%
DELTA	604,035	624,175	3.3%	6,928,786	7,252,036	4.7%	7,863,142	4.7%
SkyWest (Delta Connection)	138,372	123,195	-11.0%	1,679,113	1,428,830	-14.9%	1,554,120	-15.5%
EUROWINGS DISCOVER	-	-	0.0%	10,654	7,700	-27.7%	7,700	-27.7%
FRONTIER	19,717	28,946	46.8%	178,893	246,939	38.0%	266,756	36.5%
JETBLUE	20,453	21,814	6.7%	260,370	286,372	10.0%	309,839	11.6%
KLM ROYAL DUTCH AIRLINES	-	-	0.0%	29,944	30,979	3.5%	30,979	3.5%
SOUTHWEST	106,989	114,308	6.8%	1,253,606	1,337,065	6.7%	1,435,963	5.6%
SPIRIT	14,053	15,792	12.4%	109,330	201,875	84.6%	216,016	97.6%
UNITED	12,292	31,011	152.3%	230,914	401,137	73.7%	429,182	74.6%
Mesa Airlines (United Express)	-	3,414	100.0%	17,394	7,241	-58.4%	7,241	-60.5%
Republic Airways (United)	-	-	0.0%	345	-	-100.0%	-	-100.0%
SkyWest (United Express)	25,456	15,997	-37.2%	290,129	219,606	-24.3%	243,211	-23.4%
Charters	608	235	-61.3%	2,754	3,147	14.3%	3,147	14.3%
West Coast Charters	-	0	0.0%	-	0	0.0%	0	0.0%
<b>TOTAL ENPLANED PASSENGERS</b>	<b>1,009,249</b>	<b>1,048,323</b>	<b>3.9%</b>	<b>11,849,258</b>	<b>12,310,667</b>	<b>3.9%</b>	<b>13,332,180</b>	<b>3.7%</b>
AeroMexico	2,874	-	-100.0%	38,565	30,405	-21.2%	33,590	-20.0%
AIR CANADA	810	-	-100.0%	6,859	8,327	21.4%	9,277	35.3%
ALASKA AIR	13,541	14,321	5.8%	128,923	155,092	20.3%	167,524	20.6%
Horizon Air / Alaska	-	-	0.0%	8,519	136	-98.4%	136	-98.6%
Skywest / Alaska	6,932	4,154	-40.1%	131,679	94,462	-28.3%	101,358	-29.8%
AMERICAN	43,773	40,058	-8.5%	482,275	538,463	11.7%	595,099	12.0%
Envoy Air (American)	-	-	0.0%	5,744	3,320	-42.2%	3,320	-56.2%
Mesa Air	-	-	0.0%	14,154	6,403	-54.8%	6,403	-55.3%
Republic	-	-	0.0%	-	-	0.0%	-	0.0%
SkyWest (American)	-	39,196	100.0%	43,199	81,321	88.2%	81,321	62.6%
DELTA	617,953	638,359	3.3%	6,891,044	7,342,905	6.6%	7,988,075	6.7%
SkyWest (Delta Connection)	138,980	124,262	-10.6%	1,693,569	1,440,363	-15.0%	1,567,389	-15.4%
EUROWINGS DISCOVER	-	-	0.0%	11,773	8,074	-31.4%	8,074	-31.4%
FRONTIER	19,017	28,644	50.6%	178,316	248,601	39.4%	268,656	37.6%
JETBLUE	20,453	21,491	5.1%	253,629	287,725	13.4%	312,179	14.8%
KLM ROYAL DUTCH AIRLINES	-	-	0.0%	36,239	33,110	-8.6%	33,110	-8.6%
SOUTHWEST	105,986	112,436	6.1%	1,241,506	1,329,817	7.1%	1,430,802	6.0%
SPIRIT	14,075	15,502	10.1%	110,456	204,630	85.3%	219,098	98.4%
UNITED	12,157	30,388	150.0%	228,525	394,946	72.8%	424,060	74.0%
Mesa Airlines / United Express	-	3,398	100.0%	18,709	7,320	-60.9%	7,320	-62.8%
Republic Airways (United)	-	-	0.0%	317	-	-100.0%	-	-100.0%
SkyWest (United Express)	25,511	15,989	-37.3%	289,780	217,902	-24.8%	241,402	-24.3%
Charters	740	383	-48.2%	3,361	2,631	-21.7%	2,631	-21.7%
West Coast Charters	-	-	0.0%	-	-	0.0%	-	0.0%
<b>TOTAL DEPLANED PASSENGERS</b>	<b>1,022,802</b>	<b>1,088,581</b>	<b>6.4%</b>	<b>11,817,141</b>	<b>12,435,953</b>	<b>5.2%</b>	<b>13,500,824</b>	<b>5.1%</b>
<b>TOTAL PASSENGERS*</b>	<b>2,032,051</b>	<b>2,136,904</b>	<b>5.2%</b>	<b>23,666,399</b>	<b>24,746,620</b>	<b>4.6%</b>	<b>26,833,004</b>	<b>4.4%</b>
<b>INTERNATIONAL - ENPLANED</b>								
AEROMEXICO	2,833	-	-100.0%	28,515	19,215	-32.6%	21,492	-31.5%
AIR CANADA	804	-	-100.0%	6,624	8,211	24.0%	9,156	38.2%
DELTA	39,532	42,081	6.4%	445,276	506,706	13.8%	553,667	16.8%
SkyWest (Delta Connection)	-	2,808	100.0%	17,398	33,011	89.7%	34,042	77.1%
EUROWINGS DISCOVER	-	-	0.0%	10,654	7,700	-27.7%	7,700	-27.7%
KLM ROYAL DUTCH AIRLINES	-	-	0.0%	29,944	30,979	3.5%	30,979	3.5%
Charters	-	-	0.0%	-	-	0.0%	-	0.0%
<b>TOTAL ENPLANED INTERNATIONAL</b>	<b>43,169</b>	<b>44,889</b>	<b>4.0%</b>	<b>538,411</b>	<b>605,822</b>	<b>12.5%</b>	<b>657,036</b>	<b>14.9%</b>
AEROMEXICO	2,874	-	-100.0%	38,565	30,405	-21.2%	33,590	-20.0%
AIR CANADA	810	-	-100.0%	6,859	8,327	21.4%	9,277	35.3%
DELTA	33,490	39,558	18.1%	438,836	496,583	13.2%	541,884	16.3%
SkyWest (Delta Connection)	-	3,059	100.0%	20,552	32,591	58.6%	33,653	51.9%
EUROWINGS DISCOVER	-	-	0.0%	11,773	8,074	-31.4%	8,074	-31.4%
KLM ROYAL DUTCH AIRLINES	-	-	0.0%	36,239	33,110	-8.6%	33,110	-8.6%
Charters	-	-	0.0%	-	-	0.0%	-	0.0%
<b>TOTAL DEPLANED INTERNATIONAL</b>	<b>37,174</b>	<b>42,617</b>	<b>14.6%</b>	<b>552,824</b>	<b>609,090</b>	<b>10.2%</b>	<b>659,588</b>	<b>12.8%</b>
<b>TOTAL INTERNATIONAL PASSENGERS</b>	<b>80,343</b>	<b>87,506</b>	<b>8.9%</b>	<b>1,091,235</b>	<b>1,214,912</b>	<b>11.3%</b>	<b>1,316,624</b>	<b>13.8%</b>

\*Includes International

**SALT LAKE CITY INTERNATIONAL AIRPORT  
ELEVEN MONTHS ENDED NOVEMBER 2023  
Based on Total Enplanements**

**MARKET SHARE**

	<b>Noeember 2022</b>	<b>MARKET SHARE</b>	<b>November 2023</b>	<b>MARKET SHARE</b>	<b>Year to date 2022</b>	<b>MARKET SHARE</b>	<b>Year to date 2023</b>	<b>MARKET SHARE</b>	<b>12 MO ROLLING Ending 11/2022</b>	<b>12 MO ROLLING Ending 11/2023</b>	<b>MARKET SHARE</b>
AEROMEXICO	2,833	0.28%	-	0.00%	28,515	0.24%	19,215	0.16%	31,391	21,942	0.16%
ALASKA	19,850	1.97%	18,588	1.77%	270,075	2.28%	258,126	2.10%	292,964	276,728	2.08%
AMERICAN	43,787	4.34%	50,848	4.85%	551,812	4.66%	602,188	4.89%	608,382	657,058	4.93%
DELTA	742,407	73.56%	747,370	71.29%	8,607,899	72.65%	8,680,866	70.51%	9,347,444	9,417,262	70.64%
EUROWINGS DISCOVER	-	0.00%	-	0.00%	10,654	0.09%	7,700	0.06%	10,654	7,700	0.06%
FRONTIER	19,717	1.95%	28,946	2.76%	178,893	1.51%	246,939	2.01%	195,441	266,756	2.00%
JETBLUE	20,453	2.03%	21,814	2.08%	260,370	2.20%	286,372	2.33%	277,735	309,839	2.32%
KLM ROYAL DUTCH	-	0.00%	-	0.00%	29,944	0.25%	30,979	0.25%	29,944	30,979	0.23%
SOUTHWEST	106,989	10.60%	114,308	10.90%	1,253,606	10.58%	1,337,065	10.86%	1,359,856	1,435,963	10.77%
SPIRIT	14,053	1.39%	15,792	1.51%	109,330	0.92%	201,875	1.64%	109,330	216,016	1.62%
UNITED	37,748	3.74%	50,422	4.81%	538,782	4.55%	627,984	5.10%	582,625	679,634	5.10%
Charters	608	0.06%	235	0.02%	2,754	0.02%	3,147	0.03%	2,754	3,147	0.02%
<b>TOTAL ENPLANEMENTS</b>	<b>1,009,249</b>	<b>100%</b>	<b>1,048,323</b>	<b>100%</b>	<b>11,849,258</b>	<b>100%</b>	<b>12,310,667</b>	<b>100%</b>	<b>12,855,144</b>	<b>13,332,180</b>	<b>100%</b>

**PERCENT CHANGE YOY**

	<b>Noeember 2022</b>	<b>November 2023</b>	<b>PERCENT CHANGE</b>	<b>YTD 2022</b>	<b>YTD 2023</b>	<b>PERCENT CHANGE</b>	<b>12 MO ROLLING Ending 11/2022</b>	<b>12 MO ROLLING Ending 11/2023</b>	<b>PERCENT CHANGE</b>
AEROMEXICO	2,833	-	-100.00%	28,515	19,215	-32.61%	31,391	21,942	-30.10%
ALASKA	19,850	18,588	-6.36%	270,075	258,126	-4.42%	292,964	276,728	-5.54%
AMERICAN	43,787	50,848	16.13%	551,812	602,188	9.13%	608,382	657,058	8.00%
DELTA	742,407	747,370	0.67%	8,607,899	8,680,866	0.85%	9,347,444	9,417,262	0.75%
EUROWINGS DISCOVER	-	-	#DIV/0!	10,654	7,700	-27.73%	10,654	7,700	-27.73%
FRONTIER	19,717	28,946	46.81%	178,893	246,939	38.04%	195,441	266,756	36.49%
JETBLUE	20,453	21,814	6.65%	260,370	286,372	9.99%	277,735	309,839	11.56%
KLM ROYAL DUTCH	-	-	0.00%	29,944	30,979	0.00%	29,944	30,979	3.46%
SOUTHWEST	106,989	114,308	6.84%	1,253,606	1,337,065	6.66%	1,359,856	1,435,963	5.60%
SPIRIT	14,053	15,792	12.37%	109,330	201,875	84.65%	109,330	216,016	97.58%
UNITED	37,748	50,422	33.58%	538,782	627,984	16.56%	582,625	679,634	16.65%
Charters	608	235	-61.35%	2,754	3,147	14.27%	2,754	3,147	14.27%
<b>TOTAL ENPLANEMENTS</b>	<b>1,009,249</b>	<b>1,048,323</b>	<b>3.9%</b>	<b>11,849,258</b>	<b>12,310,667</b>	<b>3.9%</b>	<b>12,855,144</b>	<b>13,332,180</b>	<b>3.7%</b>

**SALT LAKE CITY INTERNATIONAL AIRPORT  
LANDING ACTIVITY  
ELEVEN MONTHS ENDED NOVEMBER 2023**

	November 2022	November 2023	CHANGE	Year to date 2022	Year to date 2023	CHANGE	12 MO ROLLING Ending 11/2023	% CHANGE
<b>TOTAL NUMBER OF LANDINGS</b>								
<b>SCHEDULED CARRIERS</b>								
AEROMEXICO	30	-	-100.0%	332	221	-33.4%	252	-30.6%
AIR CANADA	13	-	-100.0%	78	72	-7.7%	85	9.0%
ALASKA	109	99	-9.2%	937	1,081	15.4%	1,172	14.5%
Horizon Air / Alaska	-	-	0.0%	121	2	-98.3%	2	-98.5%
Skywest / Alaska	110	70	-36.4%	2,058	1,403	-31.8%	1,504	-33.3%
AMERICAN	330	259	-21.5%	2,986	3,253	8.9%	3,642	10.8%
Mesa Air (American)	-	-	0.0%	189	71	-62.4%	71	-62.8%
Envoy Air (American)	-	-	0.0%	86	44	-48.8%	44	-61.4%
Republic/ (American)	-	-	0.0%	-	-	0.0%	-	0.0%
SkyWest (American)	-	172	100.0%	718	884	23.1%	884	6.9%
DELTA	4,175	4,529	8.5%	47,550	50,737	6.7%	55,077	6.5%
SkyWest (Delta Connection)	2,381	2,097	-11.9%	28,966	24,252	-16.3%	26,408	-16.8%
EUROWINGS DISCOVER	-	-	0.0%	47	36	-23.4%	36	-23.4%
FRONTIER	117	176	50.4%	1,148	1,475	28.5%	1,596	27.4%
JETBLUE	137	171	24.8%	1,721	2,080	20.9%	2,247	20.9%
KLM ROYAL DUTCH AIRLINES	-	-	0.0%	91	93	2.2%	93	2.2%
SOUTHWEST	888	1,005	13.2%	9,795	10,939	11.7%	11,766	10.8%
SPIRIT	95	101	6.3%	723	1,303	80.2%	1,396	93.1%
UNITED	86	237	175.6%	1,670	2,892	73.2%	3,092	73.9%
Mesa / United Express	-	50	100.0%	263	108	-58.9%	108	-60.9%
Republic Airways Holdings	-	-	0.0%	5	-	-100.0%	-	-100.0%
SkyWest (United Express)	394	275	-30.2%	4,520	3,439	-23.9%	3,812	-23.7%
Trans States	-	-	0.0%	-	-	0.0%	-	0.0%
<b>SUBTOTAL SCHEDULED CARRIERS:</b>	<b>8,865</b>	<b>9,241</b>	<b>4.2%</b>	<b>104,004</b>	<b>104,385</b>	<b>0.4%</b>	<b>113,287</b>	<b>-0.1%</b>
<b>CHARTER CARRIERS</b>								
ALLEGiant AIR	4	3	-25.0%	12	5	-58.3%	5	-58.3%
BOMBARDIER BUSINESS JETS	38	-	-100.0%	667	731	9.6%	779	4.8%
BOUTIQUE AIR	-	-	0.0%	-	-	0.0%	-	0.0%
DELTA PRIVATE JETS	-	-	0.0%	-	-	0.0%	-	0.0%
EXECUTIVE JET MANAGEMENT	-	-	0.0%	-	-	0.0%	-	0.0%
FLIGHT OPTIONS	-	-	0.0%	-	-	0.0%	-	0.0%
KALITTA CHARTERS	3	1	-66.7%	23	14	-39.1%	14	-53.3%
KEYLIME AIR	2	-	-100.0%	10	-	-100.0%	2	-80.0%
NETJETS	139	166	19.4%	1,987	2,250	13.2%	2,509	13.0%
SUNSET AVIATION	-	-	0.0%	-	-	0.0%	-	0.0%
SWIFT AIR	-	-	0.0%	-	-	0.0%	-	0.0%
SUN COUNTRY	2	3	50.0%	38	66	73.7%	66	73.7%
XOJET	-	-	0.0%	251	82	-67.3%	96	-66.9%
OTHER CHARTER	-	-	0.0%	2	5	150.0%	3	0.0%
<b>SUBTOTAL CHARTER CARRIERS:</b>	<b>188</b>	<b>173</b>	<b>-8.0%</b>	<b>2,990</b>	<b>3,153</b>	<b>5.5%</b>	<b>3,474</b>	<b>3.8%</b>
<b>CARGO CARRIERS</b>								
ABX AIR INC	1	-	-100.0%	14	7	-50.0%	7	-56.3%
AIRNET 11 LLC	5	8	60.0%	54	64	18.5%	74	19.4%
ALPINE AVIATION	182	208	14.3%	2,231	2,176	-2.5%	2,393	-3.4%
AMERIFLIGHT	23	34	47.8%	249	253	1.6%	273	0.0%
AMERIJET INTERTIONAL	21	-	-100.0%	165	5	-97.0%	23	-87.4%
CORPORATE AIR (BILLINGS)	115	123	7.0%	1,392	1,377	-1.1%	1,511	-2.4%
EMPIRE	18	16	-11.1%	187	188	0.5%	207	-0.5%
FEDERAL EXPRESS	142	135	-4.9%	1,530	1,399	-8.6%	1,566	-9.6%
GEM AIR	34	37	8.8%	568	315	-44.5%	349	-50.1%
GLOBAL CROSSING AIRLINES	-	-	0.0%	-	111	100.0%	111	100.0%
NORTHERN AIR CARGO	25	14	-44.0%	276	124	-55.1%	147	-51.3%
SWIFT AIR	-	22	100.0%	39	37	-5.1%	41	100.0%
UPS	131	111	-15.3%	1,492	1,216	-18.5%	1,427	-18.1%
WESTERN AIR EXPRESS	31	-	-100.0%	262	26	-90.1%	52	-83.5%
OTHER CARGO	3	-	-100.0%	1	9	800.0%	17	-61.4%
<b>SUBTOTAL CARGO CARRIERS:</b>	<b>731</b>	<b>708</b>	<b>-3.1%</b>	<b>8,460</b>	<b>7,307</b>	<b>-13.6%</b>	<b>8,198</b>	<b>-14.6%</b>
<b>TOTAL LANDINGS</b>	<b>9,784</b>	<b>10,122</b>	<b>3.5%</b>	<b>115,454</b>	<b>114,845</b>	<b>-0.5%</b>	<b>124,959</b>	<b>-1.1%</b>
<b>TOTAL LANDED WEIGHT</b>								
<b>SCHEDULED CARRIERS</b>								
AEROMEXICO	2,843,940	-	-100.0%	31,472,936	20,950,358	-33.4%	23,889,096	-30.6%
AIR CANADA	2,002,000	-	-100.0%	11,984,000	11,088,000	-7.5%	13,090,000	9.2%
ALASKA	16,710,498	15,276,500	-8.6%	140,714,646	166,903,900	18.6%	180,693,304	17.1%
Horizon Air / Alaska	-	-	0.0%	9,069,797	149,914	-98.3%	149,914	-98.5%
Skywest / Alaska	8,245,270	5,246,990	-36.4%	154,261,506	105,164,671	-31.8%	112,735,328	-33.3%
AMERICAN	48,524,710	42,276,624	-12.9%	477,061,380	531,542,430	11.4%	589,035,584	12.3%
Envoy Air (American)	-	-	0.0%	6,440,420	3,297,800	-48.8%	3,297,800	-61.4%
American/Mesa Air	-	-	0.0%	14,064,300	5,304,900	-62.3%	5,304,900	-62.7%
Republic (American)	-	-	0.0%	-	-	0.0%	-	0.0%
SkyWest (American)	-	12,008,950	100.0%	48,586,850	61,668,650	26.9%	61,668,650	10.2%
DELTA	665,598,371	708,757,975	6.5%	7,532,241,916	7,927,065,468	5.2%	8,612,731,224	4.9%
SkyWest (Delta Connection)	167,010,390	154,187,546	-7.7%	1,997,719,025	1,743,139,910	-12.7%	1,896,843,941	-13.3%
EUROWINGS DISCOVER	-	-	0.0%	19,192,800	14,634,400	-23.8%	14,634,400	-23.8%
FRONTIER	17,076,966	26,616,336	55.9%	168,374,304	216,692,610	28.7%	234,162,448	26.6%

**SALT LAKE CITY INTERNATIONAL AIRPORT  
LANDING ACTIVITY  
ELEVEN MONTHS ENDED NOVEMBER 2023**

	November 2022	November 2023	CHANGE	Year to date 2022	Year to date 2023	CHANGE	12 MO ROLLING Ending 11/2023	% CHANGE
JETBLUE	19,481,400	24,404,157	25.3%	244,726,200	295,445,312	20.7%	319,192,712	20.8%
KLM ROYAL DUTCH AIRLINES	-	-	0.0%	38,864,180	39,771,584	2.3%	39,771,584	2.3%
SOUTHWEST	122,249,900	139,787,600	14.3%	1,331,633,200	1,496,147,500	12.4%	1,610,091,800	11.5%
SPIRIT	13,508,810	14,361,998	6.3%	102,809,154	185,266,358	80.2%	198,490,772	93.1%
UNITED	12,729,300	35,354,000	177.7%	241,512,200	425,451,500	76.2%	454,475,700	76.8%
Mesa / United Express	-	3,750,000	100.0%	19,725,000	8,038,020	-59.2%	8,038,020	-61.2%
Republic Airways Holdings	-	-	0.0%	364,200	-	-100.0%	-	-100.0%
SkyWest (United Express)	27,472,626	18,063,711	-34.2%	312,991,215	240,670,876	-23.1%	266,824,029	-22.5%
Trans States	-	-	0.0%	-	-	0.0%	-	0.0%
<b>SUBTOTAL SCHEDULED CARRIERS:</b>	<b>1,123,454,181</b>	<b>1,200,092,387</b>	<b>6.8%</b>	<b>12,903,809,229</b>	<b>13,498,394,161</b>	<b>4.6%</b>	<b>14,645,121,206</b>	<b>4.2%</b>
<b>CHARTER CARRIERS</b>								
ALLEGiant AIR	570,996	425,491	-25.5%	1,705,271	705,477	-58.6%	705,477	-58.6%
AMERISTAR	-	-	0.0%	107,000	-	-100.0%	-	-100.0%
BOEING COMMERCIAL AIRPLANE	-	-	0.0%	-	-	0.0%	-	-100.0%
BOMBARDIER	1,427,497	-	-100.0%	23,291,397	25,088,572	7.7%	26,718,240	2.4%
BOUTIQUE AIR	-	-	0.0%	-	-	0.0%	-	0.0%
DELTA PRIVATE JETS	-	-	0.0%	-	-	0.0%	-	0.0%
EXECUTIVE JET MANAGEMENT	-	-	0.0%	-	-	0.0%	-	0.0%
FLIGHT OPTIONS	-	-	0.0%	-	-	0.0%	-	0.0%
KALITTA CHARTERS	152,300	15,300	-90.0%	862,600	228,320	-73.5%	228,320	-79.5%
KEYLIME AIR	63,448	-	-100.0%	364,948	-	-100.0%	-	-100.0%
MIAMI AIR	-	-	0.0%	-	-	0.0%	-	0.0%
NETJETS	3,844,915	4,743,385	23.4%	58,027,229	65,052,225	12.1%	72,655,808	11.3%
SIERRA PACIFIC	-	-	0.0%	110,000	550,000	400.0%	550,000	400.0%
SUN COUNTRY	292,600	438,900	50.0%	5,508,100	9,604,500	74.4%	9,604,500	74.4%
SWIFT AIR	-	-	0.0%	-	-	0.0%	-	0.0%
VIRGIN AMERICA	-	-	0.0%	-	-	0.0%	-	0.0%
XOJET	-	-	0.0%	9,242,800	3,637,200	-60.6%	4,231,800	-60.7%
OTHER CHARTER	-	-	0.0%	-	-	0.0%	-	0.0%
<b>SUBTOTAL CHARTER CARRIERS:</b>	<b>6,351,756</b>	<b>5,623,076</b>	<b>-11.5%</b>	<b>99,219,345</b>	<b>104,866,294</b>	<b>5.7%</b>	<b>114,694,145</b>	<b>3.1%</b>
<b>CARGO CARRIERS</b>								
ABX AIR INC	272,000	-	-100.0%	3,874,000	1,915,000	-50.0%	1,915,000	-56.9%
AIRNET 11	76,500	123,100	60.9%	838,100	990,400	18.2%	1,145,500	18.8%
ALPINE AVIATION	2,529,800	2,938,000	16.1%	30,750,300	29,984,400	-2.5%	33,093,300	-3.3%
AMERIFLIGHT	351,100	542,600	54.5%	3,972,988	4,023,500	1.3%	4,345,500	-0.3%
AMERIJET INTERNATIONAL	5,712,000	-	-100.0%	44,934,000	1,360,000	-97.0%	6,256,000	-87.4%
AMERISTAR	-	-	0.0%	81,700	463,100	466.8%	1,116,700	173.4%
ATLAS AIR	-	-	0.0%	-	1,260,000	100.0%	1,260,000	100.0%
CORPORATE AIR (BILLINGS)	977,500	1,045,500	7.0%	11,832,000	11,704,500	-1.1%	12,843,500	-2.4%
EMPIRE	847,224	753,088	-11.1%	8,790,803	8,788,390	0.0%	9,682,682	-1.0%
FEDEX EXPRESS	47,896,700	44,442,300	-7.2%	522,737,100	464,415,000	-11.2%	519,709,500	-12.3%
GEM AIR	289,000	314,500	8.8%	4,807,000	2,593,900	-46.0%	2,882,900	-50.8%
GLOBAL CROSSING AIRLINES	-	-	0.0%	-	19,862,691	100.0%	19,862,691	100.0%
NORTHERN AIR CARGO	3,021,000	1,694,000	-43.9%	33,372,000	15,604,500	-53.2%	18,387,500	-49.6%
SWIFT AIR	432,000	3,168,000	633.3%	5,616,000	5,282,000	-5.9%	5,858,000	4.3%
UPS	41,305,740	33,611,440	-18.6%	454,088,160	362,554,880	-20.2%	432,317,980	-19.9%
WESTERN AIR EXPRESS	415,000	-	-100.0%	3,419,480	340,000	-90.1%	680,000	-83.5%
OTHER CARGO	-	-	0.0%	-	-	0.0%	-	0.0%
<b>SUBTOTAL CARGO CARRIERS:</b>	<b>104,125,564</b>	<b>88,632,528</b>	<b>-14.9%</b>	<b>1,129,113,631</b>	<b>931,142,261</b>	<b>-17.5%</b>	<b>1,071,356,753</b>	<b>-17.6%</b>
<b>TOTAL LANDED WEIGHT</b>	<b>1,233,931,501</b>	<b>1,294,347,991</b>	<b>4.9%</b>	<b>14,132,142,205</b>	<b>14,534,402,716</b>	<b>2.8%</b>	<b>15,831,172,104</b>	<b>2.4%</b>



**SALT LAKE CITY INTERNATIONAL AIRPORT  
CARGO ACTIVITY REPORT  
ELEVEN MONTHS ENDED NOVEMBER 2023**

	Noevember 2022	November 2023	CHANGE	Year to date 2022	Year to date 2023	CHANGE	12 MO ROLLING Ending 11/2023	% CHANGE
<b>ENPLANED CARGO</b>								
<b>PASSENGER CARRIERS</b>								
ALASKA	7,663	10,446	36.32%	92,155	121,811	32.18%	127,335	31.10%
Horizon Air / Alaska	-	-	0.00%	4,118	-	-100.00%	-	-100.00%
Skywest / Alaska	1,810	250	-86.19%	20,002	19,677	-1.62%	19,919	-9.12%
AMERICAN	6,445	5,920	-8.15%	78,960	65,743	-16.74%	74,630	-10.34%
American Eagle/Republic	-	-	0.00%	-	-	0.00%	-	0.00%
Envoy Air (American)	-	-	0.00%	-	-	0.00%	-	0.00%
Mesa	-	-	0.00%	-	251	100.00%	251	100.00%
SkyWest (American)	-	846	100.00%	6,022	7,065	17.32%	7,065	5.10%
DELTA	725,843	825,099	13.67%	7,591,236	8,070,217	6.31%	8,827,118	8.32%
EW DISCOVER GMBH	-	-	-	-	181,535	100.00%	181,535	100.00%
FRONTIER	-	-	0.00%	-	-	0.00%	-	0.00%
KLM ROYAL DUTCH	-	-	0.00%	892,138	671,955	-24.68%	671,955	-24.68%
SOUTHWEST	504,600	454,062	-10.02%	4,164,181	4,796,458	15.18%	5,059,917	14.67%
UNITED	12,576	6,990	-44.42%	89,329	57,407	-35.74%	95,601	-6.79%
Others	17,203	-	-100.00%	88,961	-	-100.00%	-	-100.00%
<b>CARGO CARRIERS</b>								
FEDEX EXPRESS*	8,509,161	7,700,190	-9.51%	90,691,540	78,819,748	-13.09%	88,152,245	-12.82%
GEM AIR	21,453	22,797	6.26%	490,266	166,052	-66.13%	187,505	-66.91%
GLOBAL CROSSING	-	-	0.00%	-	26,306	100.00%	26,306	100.00%
SWIFT AIR	1,795	131,518	7226.91%	147,191	161,194	9.51%	164,832	11.99%
UPS	5,222,275	4,452,185	-14.75%	54,197,485	45,253,450	-16.50%	53,047,452	-15.51%
MISC CARGO	1,062,661	825,996	-22.27%	11,730,502	9,084,737	-22.55%	10,318,643	-21.31%
<b>TOTAL ENPLANED CARGO (LBS)</b>	<b>16,093,485</b>	<b>14,436,299</b>	<b>-10.30%</b>	<b>170,284,086</b>	<b>147,503,606</b>	<b>-13.38%</b>	<b>166,962,309</b>	<b>-12.86%</b>
<b>DEPLANED CARGO</b>								
<b>PASSENGER CARRIERS</b>								
ALASKA	19,319	10,480	-45.75%	188,879	172,530	-8.66%	185,756	-8.86%
Horizon Air / Alaska	-	-	0.00%	5,716	-	-100.00%	-	-100.00%
Skywest / Alaska	3,566	30	-99.16%	27,674	31,172	12.64%	34,909	8.34%
AMERICAN	51,438	19,871	-61.37%	420,469	314,093	-25.30%	346,594	-22.57%
American Eagle/Republic	-	-	0.00%	-	-	0.00%	-	0.00%
Envoy	-	-	0.00%	9	255	2733.33%	255	-17.48%
Mesa (American)	-	-	0.00%	933	559	-40.09%	559	-40.09%
SkyWest (American)	-	689	100.00%	4,654	3,536	-24.02%	3,536	-37.76%
DELTA	1,051,570	1,499,152	42.56%	11,782,522	11,067,007	-6.07%	12,152,679	-3.93%
SkyWest (Delta Connection)	-	-	0.00%	-	-	0.00%	-	0.00%
Compass (Delta Connection)	-	-	0.00%	-	-	0.00%	-	0.00%
EW DISCOVER GMBH	-	-	0.00%	-	131,425	100.00%	131,425	100.00%
KLM ROYAL DUTCH	-	-	0.00%	1,565,124	848,120	-45.81%	848,120	-45.81%
SOUTHWEST	378,649	380,389	0.46%	3,960,212	3,884,412	-1.91%	4,192,523	-4.12%
UNITED	15,388	57,021	270.55%	264,793	320,007	20.85%	341,460	17.41%
Others	28,457	-	-100.00%	96,434	5,522	-94.27%	5,522	-94.27%
<b>CARGO CARRIERS</b>								
FEDEX EXPRESS*	8,119,316	7,502,288	-7.60%	90,031,285	79,276,060	-11.95%	88,437,238	-11.65%
GEM AIR	1,912	1,541	-19.40%	102,230	12,841	-87.44%	14,753	-87.65%
GLOBAL CROSSING	-	-	0.00%	-	18,597	100.00%	18,597	100.00%
SWIFT AIR	72,216	609,702	744.28%	983,946	952,599	-3.19%	1,052,787	7.00%
UPS	5,904,760	4,856,620	-17.75%	61,782,885	50,336,895	-18.53%	58,146,892	-17.83%
MISC CARGO	1,074,797	346,100	-67.80%	10,356,003	4,178,108	-59.66%	5,279,032	-55.58%
ABX AIR	31,392	-	-100.00%	607,830	221,799	-63.51%	221,799	-67.99%
<b>TOTAL DEPLANED CARGO (LBS)</b>	<b>16,721,388</b>	<b>15,283,883</b>	<b>-8.60%</b>	<b>181,573,768</b>	<b>151,553,738</b>	<b>-16.53%</b>	<b>171,192,637</b>	<b>-15.89%</b>
<b>TOTAL CARGO LBS</b>	<b>32,814,873</b>	<b>29,720,182</b>	<b>-9.43%</b>	<b>351,857,854</b>	<b>299,057,344</b>	<b>-15.01%</b>	<b>338,154,946</b>	<b>-14.42%</b>

\*FEDEX EXPRESS includes mail



Salt Lake City  
Department of Airports

**COMPARISON OF ON TIME OPERATIONS**  
September 2023

**ARRIVALS**

Airport	Flights	% On Time	Rank
<b>SLC SALT LAKE CITY INTL</b>	<b>9,167</b>	<b>87.4</b>	<b>1</b>
ATL HARTSFIELD-JACKSON ATLANTA INTL	28,368	87.0	7
MSP MINNEAPOLIS-ST. PAUL INTL	10,402	86.5	3
DTW DETROIT METRO WAYNE CNTY	10,934	84.4	4
SEA SEATTLE-TACOMA INTL	16,483	84.3	5
MDW CHICAGO MIDWAY	7,103	82.7	6
CLT CHARLOTTE DOUGLAS	18,954	82.4	7
DEN DENVER INTL	25,597	82.4	8
PHX PHOENIX SKY HARBOR INTL	14,435	82.0	9
IAH HOUSTON GEORGE BUSH	12,878	81.5	10
BNA NASHVILLE INTL	8,127	81.1	11
LAX LOS ANGELES INTL	16,340	81.1	12
BWI BALTIMORE/WASHINGTON INTL	8,013	80.9	13
ORD CHICAGO O HARE	25,335	80.7	14
DFW DALLAS-FT. WORTH REGIONAL	24,665	80.5	15
IAD WASHINGTON DULLES	6,432	80.3	16
AUS AUSTIN	7,863	79.4	17
SFO SAN FRANCISCO INTL	11,792	79.3	18
SAN SAN DIEGO LINDBERGH FIELD	7,706	79.2	19
DCA RONALD REAGAN NATIONAL	11,720	78.5	20
TPA TAMPA INTL	5,698	77.5	21
PHL PHILADELPHIA INTL	9,759	76.6	22
LAS LAS VEGAS MCCARRAN INTL	16,209	75.1	23
MIA MIAMI INTL	7,548	74.8	24
FLL FT. LAUDERDALE	6,569	74.0	25
EWR NEWARK LIBERTY INTERNATIONAL	12,278	73.8	26
MCO ORLANDO INTL	12,258	73.6	27
LGA NEW YORK LAGUARDIA	13,596	73.4	28
JFK NEW YORK JFK INTL	10,761	68.7	29
BOS BOSTON LOGAN INTL	11,836	65.9	30
<b>AVERAGES</b>	<b>12,961</b>		

**DEPARTURES**

Airport	Flights	% On Time	Rank
<b>SLC SALT LAKE CITY INTL</b>	<b>9,166</b>	<b>86.7</b>	<b>1</b>
MSP MINNEAPOLIS-ST. PAUL INTL	10,226	85.2	2
ATL HARTSFIELD-JACKSON ATLANTA INTL	28,344	84.2	3
DTW DETROIT METRO WAYNE CNTY	10,819	83.9	4
SFO SAN FRANCISCO INTL	11,543	83.4	5
SAN SAN DIEGO LINDBERGH FIELD	7,612	82.9	6
LAX LOS ANGELES INTL	16,152	82.7	7
SEA SEATTLE-TACOMA INTL	15,041	82.6	8
PHX PHOENIX SKY HARBOR INTL	14,285	82.5	9
TPA TAMPA INTERNATIONAL	5,700	81.0	10
BNA NASHVILLE INTL	8,064	80.9	11
IAD WASHINGTON DULLES	4,278	80.3	12
DCA RONALD REAGAN NATIONAL	11,513	80.2	13
AUS AUSTIN	7,831	79.8	14
ORD CHICAGO O HARE	22,384	79.8	15
IAH HOUSTON GEORGE BUSH	9,283	79.6	16
CLT CHARLOTTE DOUGLAS	16,175	79.4	17
DFW DALLAS-FT. WORTH REGIONAL	24,533	78.2	18
PHL PHILADELPHIA INTL	8,331	77.9	19
DEN DENVER INTERNATIONAL	24,738	77.0	20
MDW CHICAGO MIDWAY	7,109	76.1	21
EWR NEWARK LIBERTY INTERNATIONAL	11,373	74.9	22
LAS LAS VEGAS MCCARRAN INTL	16,110	74.1	23
LGA NEW YORK LAGUARDIA	13,372	73.8	24
MCO ORLANDO INTL	12,265	73.4	25
MIA MIAMI INTL	7,554	73.2	26
BWI BALTIMORE/WASHINGTON INTL	8,012	72.8	27
JFK NEW YORK JFK INTL	10,760	70.6	28
FLL FT. LAUDERDALE	6,571	70.3	29
BOS BOSTON LOGAN INTERNATIONAL	11,742	69.3	30
<b>AVERAGES</b>	<b>12,363</b>		

**ON TIME ARRIVAL PERFORMANCE AT SLC**

By Carrier

Air Carrier	Flights	% On Time
OO SKYWEST	2,250	95.4%
DL DELTA	<b>4,311</b>	<b>88.1%</b>
WN SOUTHWEST	999	81.9%
UA UNITED	551	81.3%
AS ALASKA	238	81.1%
F9 FRONTIER	173	78.0%
NK SPIRIT	123	77.2%
AA AMERICAN	344	76.5%
B6 JETBLUE	178	64.6%
	<b>9,167</b>	<b>84.4%</b>

Source: DOT Air Travel Consumer Report



Salt Lake City  
Department of Airports

**COMPARISON OF ON TIME OPERATIONS**  
**October 2023**

**ARRIVALS**

Airport	Flights	% On Time	Rank
IAD WASHINGTON DULLES	6,556	89.9	1
EWR NEWARK LIBERTY INTERNATIONAL	12,763	89.5	7
ATL HARTSFIELD-JACKSON ATLANTA INTL	29,264	89.3	3
LGA NEW YORK LAGUARDIA	14,126	89.2	4
<b>SLC SALT LAKE CITY INTL</b>	<b>9,446</b>	<b>88.9</b>	<b>5</b>
DTW DETROIT METRO WAYNE CNTY	11,306	88.8	6
MSP MINNEAPOLIS-ST. PAUL INTL	10,787	88.0	7
CLT CHARLOTTE DOUGLAS	20,430	86.8	8
SEA SEATTLE-TACOMA INTL	15,733	86.8	9
DCA RONALD REAGAN NATIONAL	12,317	86.1	10
PHL PHILADELPHIA INTL	9,732	86.1	11
ORD CHICAGO O HARE	25,908	85.7	12
BWI BALTIMORE/WASHINGTON INTL	8,780	84.6	13
IAH HOUSTON GEORGE BUSH	13,904	84.0	14
MIA MIAMI INTL	8,156	83.5	15
BNA NASHVILLE INTL	9,033	83.3	16
JFK NEW YORK JFK INTL	10,913	83.3	17
MDW CHICAGO MIDWAY	7,654	83.0	18
LAX LOS ANGELES INTL	16,986	82.8	19
SFO SAN FRANCISCO INTL	12,022	82.6	20
TPA TAMPA INTL	6,608	82.6	21
BOS BOSTON LOGAN INTL	12,469	82.5	22
DEN DENVER INTL	26,508	82.2	23
MCO ORLANDO INTL	13,936	81.9	24
PHX PHOENIX SKY HARBOR INTL	15,648	81.4	25
FLL FT. LAUDERDALE	7,290	80.4	26
SAN SAN DIEGO LINDBERGH FIELD	8,079	80.1	27
DFW DALLAS-FT. WORTH REGIONAL	25,949	79.4	28
AUS AUSTIN	8,397	78.7	29
LAS LAS VEGAS MCCARRAN INTL	17,646	78.5	30
<b>AVERAGES</b>	<b>13,612</b>		

**DEPARTURES**

Airport	Flights	% On Time	Rank
<b>SLC SALT LAKE CITY INTL</b>	<b>9,414</b>	<b>89.2</b>	<b>1</b>
IAD WASHINGTON DULLES	4,527	88.8	2
DTW DETROIT METRO WAYNE CNTY	11,213	88.4	3
EWR NEWARK LIBERTY INTERNATIONAL	11,805	88.1	4
LGA NEW YORK LAGUARDIA	13,861	87.7	5
MSP MINNEAPOLIS-ST. PAUL INTL	10,650	87.5	6
ATL HARTSFIELD-JACKSON ATLANTA INTL	29,251	87.1	7
DCA RONALD REAGAN NATIONAL	12,110	87.0	8
SEA SEATTLE-TACOMA INTL	14,313	86.7	9
ORD CHICAGO O HARE	22,812	85.4	10
TPA TAMPA INTERNATIONAL	6,607	85.0	11
SFO SAN FRANCISCO INTL	11,784	84.8	12
PHL PHILADELPHIA INTL	8,449	84.7	13
CLT CHARLOTTE DOUGLAS	17,372	84.5	14
LAX LOS ANGELES INTL	16,823	83.9	15
IAH HOUSTON GEORGE BUSH	9,918	83.4	16
JFK NEW YORK JFK INTL	10,920	83.3	17
BNA NASHVILLE INTL	8,923	83.2	18
MIA MIAMI INTL	8,159	83.2	19
BOS BOSTON LOGAN INTERNATIONAL	12,369	82.3	20
PHX PHOENIX SKY HARBOR INTL	15,503	81.1	21
SAN SAN DIEGO LINDBERGH FIELD	8,026	81.0	22
MCO ORLANDO INTL	13,927	80.5	23
DFW DALLAS-FT. WORTH REGIONAL	25,786	78.9	24
AUS AUSTIN	8,357	78.8	25
DEN DENVER INTERNATIONAL	25,543	77.6	26
MDW CHICAGO MIDWAY	7,653	76.9	27
FLL FT. LAUDERDALE	7,290	76.0	28
LAS LAS VEGAS MCCARRAN INTL	17,503	75.8	29
BWI BALTIMORE/WASHINGTON INTL	8,784	74.7	30
<b>AVERAGES</b>	<b>12,988</b>		

**ON TIME ARRIVAL PERFORMANCE AT SLC**  
**By Carrier**

Air Carrier	Flights	% On Time
DL DELTA	6,770	92.7%
AS ALASKA	173	85.0%
UA UNITED	612	82.7%
NK SPIRIT	123	80.5%
AA AMERICAN	361	80.1%
WN SOUTHWEST	1,045	78.4%
B6 JETBLUE	178	73.6%
F9 FRONTIER	184	71.7%
<b>AVERAGES</b>	<b>9,446</b>	<b>84.4%</b>

Source: DOT Air Travel Consumer Report