



Advisory Board
Meeting

November 18, 2020

Agenda



Advisory Board Meeting

November 18, 2020

This meeting will be an electronic meeting pursuant to Title 52, Chapter 4, as amended June 25, 2020, without an anchor location, based on the attached written statement from Board Chair Cyndy Miller.

To access the meeting please visit:

<https://saltlakecity.webex.com/saltlakecity/onstage/g.php?MTID=e7f42f4dd183526133dbec9c7a83eec02>



ADVISORY BOARD MEETING AGENDA

18 November 2020

8:00 A.M.

CONSENT

- A. Minutes of the 21 October 2020 Meeting

DISCUSSION

- A. Director's Report – Bill Wyatt, Executive Director, SLCDA
- B. Airport Redevelopment Program (ARP) Update – Mike Williams, ARP Director, SLCDA
- C. Update on Master Plan – Brady Frederickson, Planning Director, SLCDA
- D. Nominations for Chair and Vice Chair – Cyndy Miller, Board Chair

INFORMATION ITEMS

Financial Report – September 2020
Air Traffic Statistics – September 2020
Construction Report – October 2020

MEDIA CLIPPINGS

Media Clippings – September 2020

The next meeting will be held on **Wednesday, January 20, 2021**, at 8:00 a.m. Meetings are usually held in the Board Room unless otherwise posted. People with disabilities may make requests for reasonable accommodations no later than 48 hours in advance in order to attend this [Airport Advisory Board Meeting](#). Accommodations may include alternate formats, interpreters, and other auxiliary aids. This is an accessible facility. For questions or additional information, please contact [Tina Nee](#) at [801-575-2042](tel:801-575-2042).



I, Cynthia D. Miller, Chair of the Salt Lake City Airport Advisory Board, hereby determine that conducting the Airport Advisory Board meeting at an anchor location presents a substantial risk to the health and safety of those who may be present at the anchor location. The World Health Organization, the President of the United States, the Governor of Utah, the Salt Lake County Health Department, Salt Lake County Mayor, and the Mayor of Salt Lake City have all recognized a global pandemic exists related to the new strain of the coronavirus, SARS- CoV-2.

Due to the state of emergency caused by the global pandemic, I find that conducting a meeting at an anchor location under the current state of public health emergency constitutes a substantial risk to the health and safety of those who may be present at the location.

Dated this 10th day of November, 2020.



Cynthia D. Miller
Chair, Salt Lake City Airport Advisory Board



Advisory Board
Meeting

November 18, 2020

Minutes

SALT LAKE CITY DEPARTMENT OF AIRPORTS MINUTES OF ADVISORY BOARD MEETING

October 21, 2020

Members Present: Cyndy Miller, Chair
 Larry Pinnock
 Theresa Foxley
 Arlyn Bradshaw
 J.T. Martin
 Karen Mayne
 Roger Boyer
 Dirk Burton
 Shawn Milne

Mayor's Office: Rachel Otto

City Council Office: James Rogers
 Russell Weeks

Department of Airports: Bill Wyatt, Executive Director
 Tina Nee, Administration
 Brian Butler, Chief Financial Officer
 Treber Anderson, Acting Director of Operations
 Ed Clayson, Director of Maintenance
 Shane Andreasen, Director Admin and Commercial Services
 Medardo Gomez, ORAT Director
 Brady Fredrickson, Director of Planning and Environmental
 Pete Higgins, Chief Operations Officer
 Mike Williams, ARP Program Director
 Nancy Volmer, Communication and Marketing Director
 Catherine Brabson, City Attorney
 Marco Kunz, City Attorney
 Shaun Anderson, Finance
 Lorin Rollins, Finance
 Joel Nelson, Admin and Commercial Services
 Nate Lavin, Communication and Marketing
 Jasen Asay, Communication and Marketing

Other: Paul Skeen Eide Bailly
 Robert Bergman, Lobbyist
 Andy Crawford
 Ann Thorvik, Chrysalis
 Andrew Scanlon, Kimley-Horn
 Paul Coates, City of West Jordan
 Brian Bangerter, HNTB

Kory Cox, HDR, Inc.
Fox 13 News

Cyndy Miller called the meeting, held via Web-Ex to order at 8:02 a.m.

AGENDA

A. Minutes

A motion was made by Larry Pinnock and seconded by Karen Mayne to approve the minutes of September 23, 2020 as presented. All votes were affirmative; motion passed.

B. Director's Report

Bill Wyatt, Executive Director, updated the Airport Advisory Board regarding current events.

Bill Wyatt provided a brief update on passenger volumes, financial position, and construction.

There were no questions for Mr. Wyatt.

C. Airport Redevelopment Program (ARP) Update – Mike Williams, ARP Director, SLCDA

Mike Williams, Airport Redevelopment Program (ARP) Director, presented an update on the ARP (presentation on file). Main points included were:

- Project statistics
- Safety and Schedule Stats, and Cost Summary
- Project statistics
- CGMP #5 – Terminal/South Concourse West/Gateway status
- CGMP #6 – Roadways/Parking Garage/Central Utility Plant status
- CGMP #7 – Baggage Handling System status
- CGMP #9A – SCW Apron Paving and Hydrant Fueling status
- CGMP #16 – NCP Phase 1
- CGMP #17 – NCP Baggage Handling System Phases 1 & 2 status
- CGMP #18 – NCP Apron Paving/ Hydrant Fueling
- Tracking Budget
- Job progress photos

James Rogers asked if the delays with the Automatic Screening Lanes (ASLs) was due to COVID-19.

Mike Williams replied no; the ASLs came from Spain and were shipped before March 2020. The current delays are due to program and software issues.

Karen Mayne was complimentary of Mike Williams and his efforts to take care of a concern with Comcast.

D. Presentation of Financial Audit Results – Paul Skeen, Eide Bailly and Brian Butler, Finance Director, SLCDA

Brian Butler, SLCDA Finance Director, presented the results of the FY2020 audited financial statements (presentation on file.) Main points included were:

- Financial and Operational Highlights
- Enplaned Passenger Traffic
- Cost per Enplaned Passenger (CPE) FY 2019
- CPE Ten Year History
- Budget Comparison
- Dash Cash on Hand
- Airline Use Agreement Rates and Charges
- Comparison of Actual Airline Revenue
- Comparison of Actual None-Airline Revenue
- Comparison of Actual Operating Expense

Cyndy Miller asked if CARES Act funding was included in Dash Cash on Hand. Brian Butler indicated no, it is not.

James Rogers asked for an update on CPE numbers after the B Concourse opens. Brian Butler will provide an update after meetings with the rating agencies.

Roger Boyer inquired about the projected budget; initial thought is it is not conservative enough. Will an amendment be made? Brian Butler indicated yes, just last week SLCDA submitted a formal budget amendment to the City Council for approval.

Cyndy Miller adjourned the meeting at 9:12 a.m.

The next board meeting will be held November 18, 2020.

Cynthia Miller, Chair

Date

Erin Mendenhall, Mayor

Date



Advisory Board
Meeting

November 18, 2020

Discussion Items

AGENDA: DISCUSSION ITEM (A)
DATE: 18 November 2020
TO: Airport Advisory Board
FROM: Bill Wyatt, Executive Director
SUBJECT: **Director's Report**

Bill Wyatt, Executive Director, will present a monthly informational report to the Board, which may include:

1. Communication and marketing
2. ARP progress
3. Ground transportation update
4. Concessions and rental cars
5. Airport safety and security
6. Airport facilities and operations
7. General aviation
8. Passenger and airport users
9. Environmental matters
10. Financial condition
11. Legislative issues
12. Airlines

AGENDA: DISCUSSION ITEM (B)
DATE: 18 November 2020
TO: Airport Advisory Board
FROM: Bill Wyatt, Executive Director
SUBJECT: **Airport Redevelopment Program Update**

Mike Williams, Airport Redevelopment Program (ARP) Director, will present an update on the SLC Airport Redevelopment Program (presentation on file.)

Airport Redevelopment Program

Status Update: 11-18-2020



Salt Lake City International Airport



Safety, Schedule Status and Cost Summary

Safety (Numbers for the Current Month)

- **OSHA National Average**
 - Lost Time Rate 1.80 Recordable Rate 3.10
- **TRP Metrics**
 - 8,165,098 Total Manhours worked
 - Lost Time Rate 0.24 Recordable Rate 2.35
- **NCP Metrics**
 - 2,148,549 Total Manhours worked
 - Lost Time Rate 0.09 Recordable Rate 1.21

Schedule – Construction Activity on Critical Path

- P1/P2 Hardstand Electrical, Storm Drain, PCC Paving & Striping
- Hardstand Operational Support Trailers Substantial Completion
- Completion of State Inspections for Elevators, Escalators & Moving Walkways
- MEP/HVAC & Special Systems completion & commissioning
- Overall Program is on schedule

Airport Redevelopment Program Budget Summary Status

- Total ARP Budget: \$ 4,072,259,659
- ARP Budget Commitment: \$ 3,459,817,433
- ARP Estimate At Completion: \$ 4,072,259,659
- ARP Invoiced to date: \$ 2,645,986,591



Project Statistics

TRP/NCP Trade Staffing					
Trade Workers 472 on 11/10/2020 (188 Nights and 284 Days)					
10,313,647 Hours Worked as of 10/31/2020					
Contract Local/Non-Local Awarded Statistics					
Local Trades		Dollar Value		Trade Count	
				Percentage	
Total Local (Wasatch Front) Contractors		\$1,310,865,986		123	
Total Out of State Contractors		\$652,754,809		29	
Total Contract Awards		\$1,963,620,795		152	
Contract Union/Merit Shop Awarded Statistics					
Union Trades		Dollar Value		Trade Count	
				Percentage	
Total Union Contractors		\$649,835,786		35	
Total Merit Shop Contractors		\$1,313,785,009		117	
Total Contract Awards		\$1,963,620,795		152	

Concourse 'B' Opening Day Status

– Opening Day

- Opened with 21 Contact Gates
- Opened with 14 of 19 Hardstand Aircraft Parking Positions
- Opened with Bus Holdroom Departures and Arrivals Ramps and Bus Shelters

– Post Opening Day

- Opened Last 5 Hardstand Aircraft Parking Positions on 11/9/2020 bringing total to 19 Hardstand Aircraft Parking Positions



Phase 2 Capture and Demolition

- **Concourse D and IAB**

- Ready to Start Demolition
- IAB Demolition Target Complete 12/16/2020
- Concourse 'D' Demolition Target Complete 2/12/2021

- **Parking Garage**

- Demolition is progressing
- Demolition Complete 3/1/2021

- **Terminal 1 and Terminal 2**

- Capture and Site Fencing Underway
- Salvage Period ended 11/11/2020
- Abatement underway
- Terminal 1 Demolition Complete 2/28/2021
- Terminal 2 Demolition Complete 3/16/2021

- **Concourse C, F and G**

- Capture and Fencing Underway
- Salvage Period ended 11/11/2020



Landside and Airside

- **TRAX Platform**

- Concrete underway to bring Platform for Terminal
- Platform Canopy Relocated from Former Platform to New Platform

- **Roadway and Sitework East of Terminal**

- Airside Wall Foundation Underway
- Sitework to Complete Service Roads Underway

- **Central Tunnel**

- Driving Sheet Piling to Prepare for Excavation

- **Fuel System**

- Installing Fuel Vault in Front of Former IAB



Overall Airport Redevelopment Program Tracking Budget

Construction Budget October 2020	Budget 09/10/20 FOC	Committed Sep-20	Commitments Oct-20	Revised Commitments	Earned to Date	Estimate at Completion
Closed CGMPs 01, 03, 04, 09 & 15	\$217,279,720	\$217,279,720	\$0	\$217,279,720	\$217,279,720	\$217,279,720
CGMP 02 HDJV General Conditions Services	\$139,951,933	\$133,551,933	\$0	\$133,551,933	\$88,377,504	\$139,951,933
CGMP 05 Terminal/SCW/Gateway	\$1,014,907,690	\$1,014,907,690	\$0	\$1,014,907,690	\$985,587,340	\$1,014,907,690
CGMP 06 Parking Garage, Roadways, CUP	\$407,348,093	\$407,348,093	\$0	\$407,348,093	\$378,931,208	\$407,348,093
CGMP 07 TRP Baggage Handling System	\$108,094,181	\$108,094,181	\$0	\$108,094,181	\$93,142,428	\$108,094,181
CGMP 09A Apron Paving & Fueling/SCW	\$79,748,407	\$79,748,407	\$0	\$79,748,407	\$73,560,704	\$79,748,407
CGMP 10 South Concourse East/Tunnel Shell	\$398,207,572	\$397,310,540	\$0	\$397,310,540	\$7,610,225	\$398,207,572
CGMP 11 Apron Paving & Fueling SCE	\$228,238,061	\$121,393,261	\$0	\$121,393,261	\$5,071,513	\$228,238,061
CGMP 12 Existing Structure Demolition	\$28,914,775	\$28,902,767	\$0	\$28,902,767	\$2,996,313	\$28,914,775
CGMP 13 AOJV Preconstruction Services	\$16,235,519	\$16,235,518	\$0	\$16,235,518	\$13,549,514	\$16,235,519
CGMP 14 AOJV General Conditions Ph 1	\$93,384,788	\$47,006,676	\$0	\$47,006,676	\$42,284,069	\$93,384,788
CGMP 16 North Concourse & Mid-Tunnel Ph 1	\$298,672,058	\$298,672,058	\$0	\$298,672,058	\$287,462,296	\$298,672,058
CGMP 17 NCP Baggage Handling System	\$52,756,826	\$52,756,826	\$0	\$52,756,826	\$25,876,765	\$52,756,826
CGMP 18 NCP Apron Paving & Fueling Ph 1	\$91,949,310	\$91,949,310	\$0	\$91,949,310	\$72,338,584	\$91,949,310
CGMP 19 North Concourse & C-Tunnel Ph 2	\$262,438,048	\$28,647,982	\$0	\$28,647,982	\$1,433,782	\$262,438,048
CGMP 20 NCP Apron Paving & Jet Fuel Ph 2	\$49,841,299	\$0	\$0	\$0	\$0	\$49,841,299
Security Checkpoint Equipment	\$11,751,472	\$11,751,472	\$0	\$11,751,472	\$6,908,600	\$11,751,472
Reduntant Fuel Main	\$12,500,000	\$0	\$0	\$0	\$0	\$12,500,000
Taxilane X-X Construction	\$23,856,270	\$0	\$0	\$0	\$0	\$23,856,270
Total Program Construction	\$3,536,076,022	\$3,055,556,434	\$0	\$3,055,556,434	\$2,302,410,565	\$3,536,076,022
TRP Owner Procurement	\$5,215,472	\$5,215,472	\$0	\$5,215,472	\$4,808,421	\$5,215,472
NCP Owner Procurement	\$2,655,266	\$2,655,266	\$0	\$2,655,266	\$1,860,182	\$2,655,266
TRP Soft Cost	\$340,424,371	\$277,288,343	(\$113,851)	\$277,174,492	\$257,233,083	\$340,424,371
NCP Soft Cost	\$170,729,546	\$119,311,045	(\$95,276)	\$119,215,769	\$79,674,340	\$170,729,546
Total Program Soft Cost	\$519,024,655	\$404,470,126	(\$209,127)	\$404,260,999	\$343,576,026	\$519,024,655
TRP Owner Reserve	\$13,503,562					\$13,503,562
NCP Owner Reserve	\$3,655,420					\$3,655,420
Total Program Owner Reserve	\$17,158,982	\$0	\$0	\$0	\$0	\$17,158,982
Total ARP Program Budget	\$4,072,259,659	\$3,460,026,560	(\$209,127)	\$3,459,817,433	\$2,645,986,591	\$4,072,259,659



Concourse B Opens



First Southwest Departure from Concourse B

North Concourse Apron Activities & Construction



Gate B16 United Test Fit



Gate B13 American Test Fit



Bus Holdroom Passenger Ramp Installation



Hardstand Bus Shelters Installation

North Concourse Final Prep for Opening Day



Final Sweeping of North Apron



North Concourse FOD Walk



Bus Holdrooms IT Installation



North Concourse Holdrooms

North Concourse Concessions Final Prep



Uinta Brewing Company



Wasatch Pub



Hip & Humble



Salt Lake Tribune

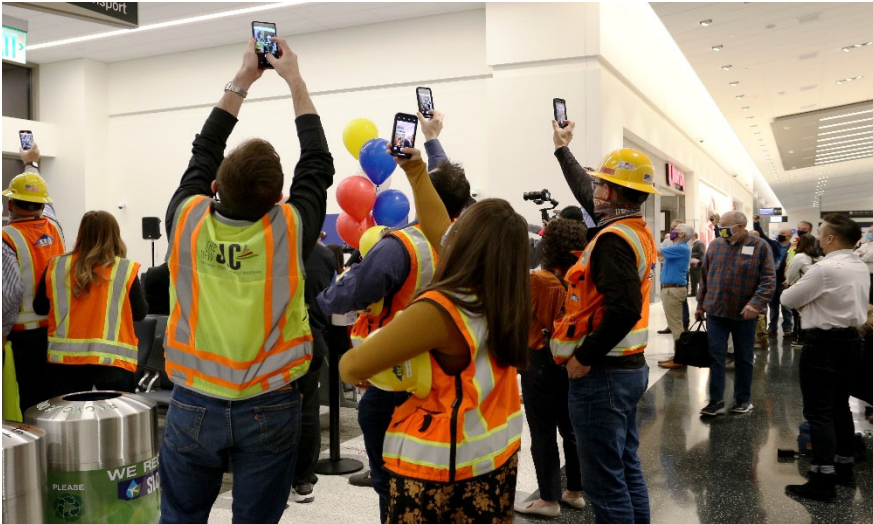
North Concourse First Departure Celebration



Passenger Media Interviews



Passenger Media Interviews



Catching the Moment

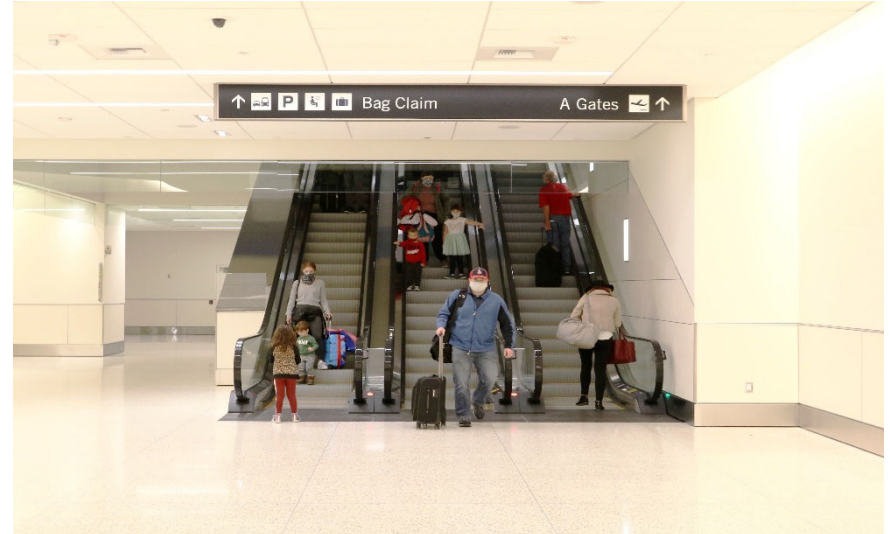


First Departure Passenger Boarding

Adding to the Passenger Experience



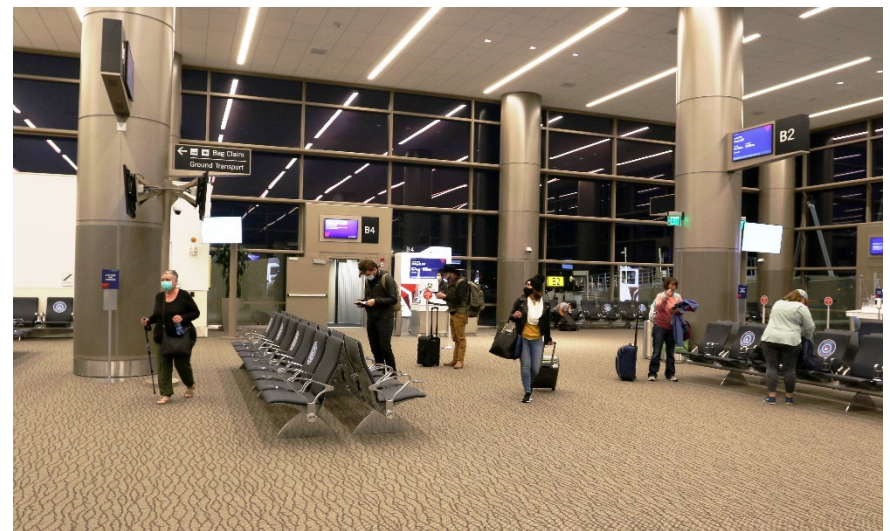
Concourse 'A' Connection to Concourse 'B'



Escalators into the Mid-Concourse Tunnel from Concourse 'A'



Mid-Concourse Tunnel



Gate B4 Arriving Passengers

Construction & Demolition Activities



Concourse 'D' Jet Bridge & Pavement Demolition



Terminal 1 Salvage & Abatement



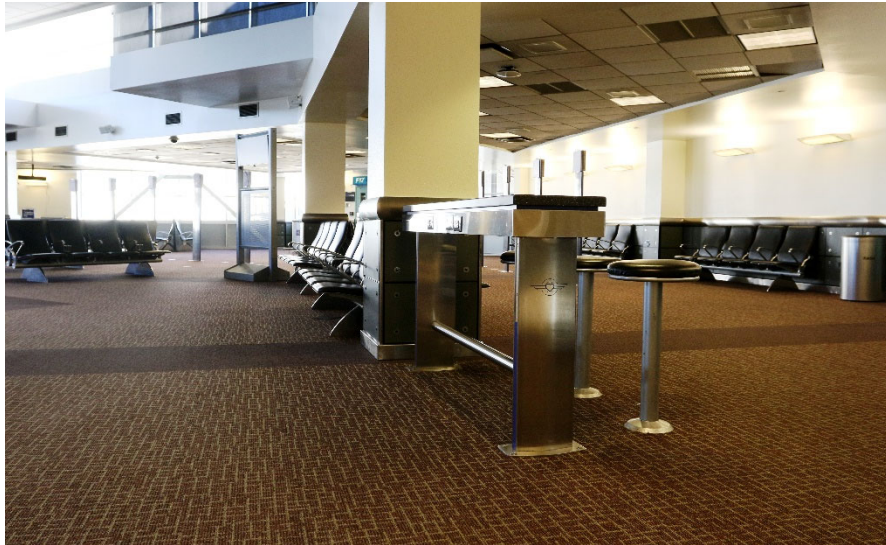
Parking Garage East Side Demolition



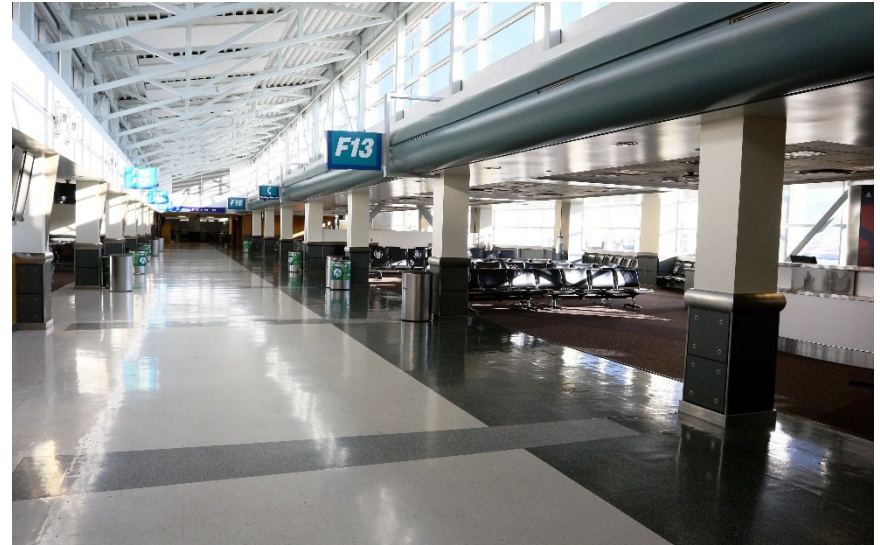
Central Tunnel Sheet Piles



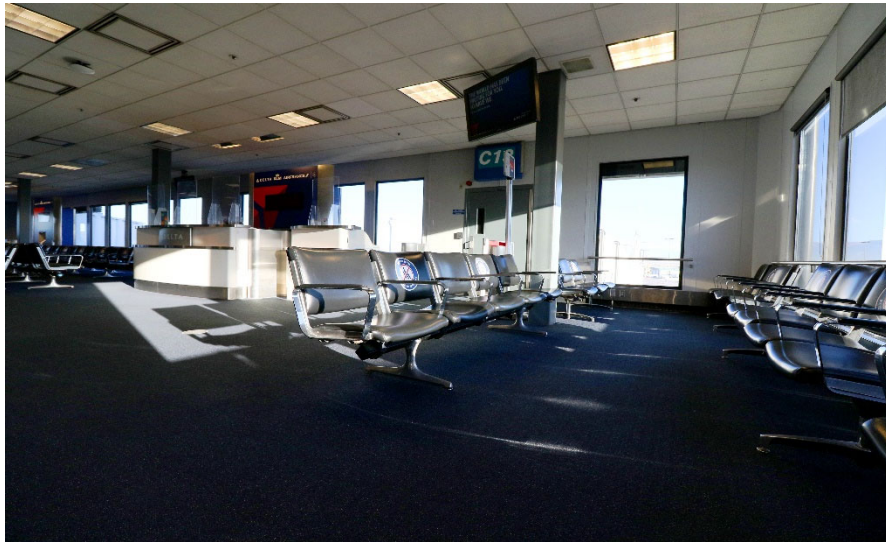
Remaining Existing Facilities Closed



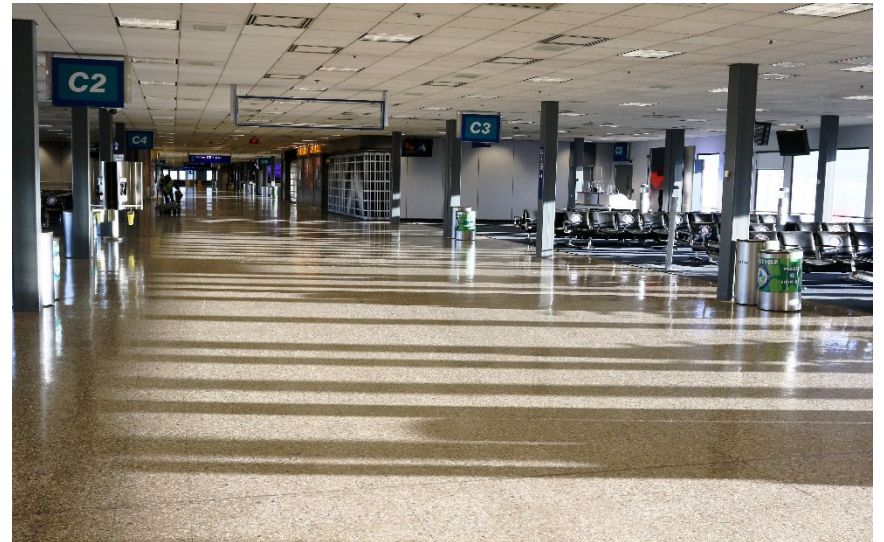
Concourse 'F' Southwest Nub



Concourse 'F'



Gate C18 Holdroom



Concourse 'C'



AGENDA: DISCUSSION ITEM (C)
DATE: 18 November 2020
TO: Airport Advisory Board
FROM: Bill Wyatt, Executive Director
SUBJECT: **Presentation of Update on Master Plan**

Brady Frederickson, SLCDA Planning Director, will present an update on the Master Plan (presentation on file).



Salt Lake City International Airport

Airport Board Update

November, 18th 2020



Agenda

Status Update

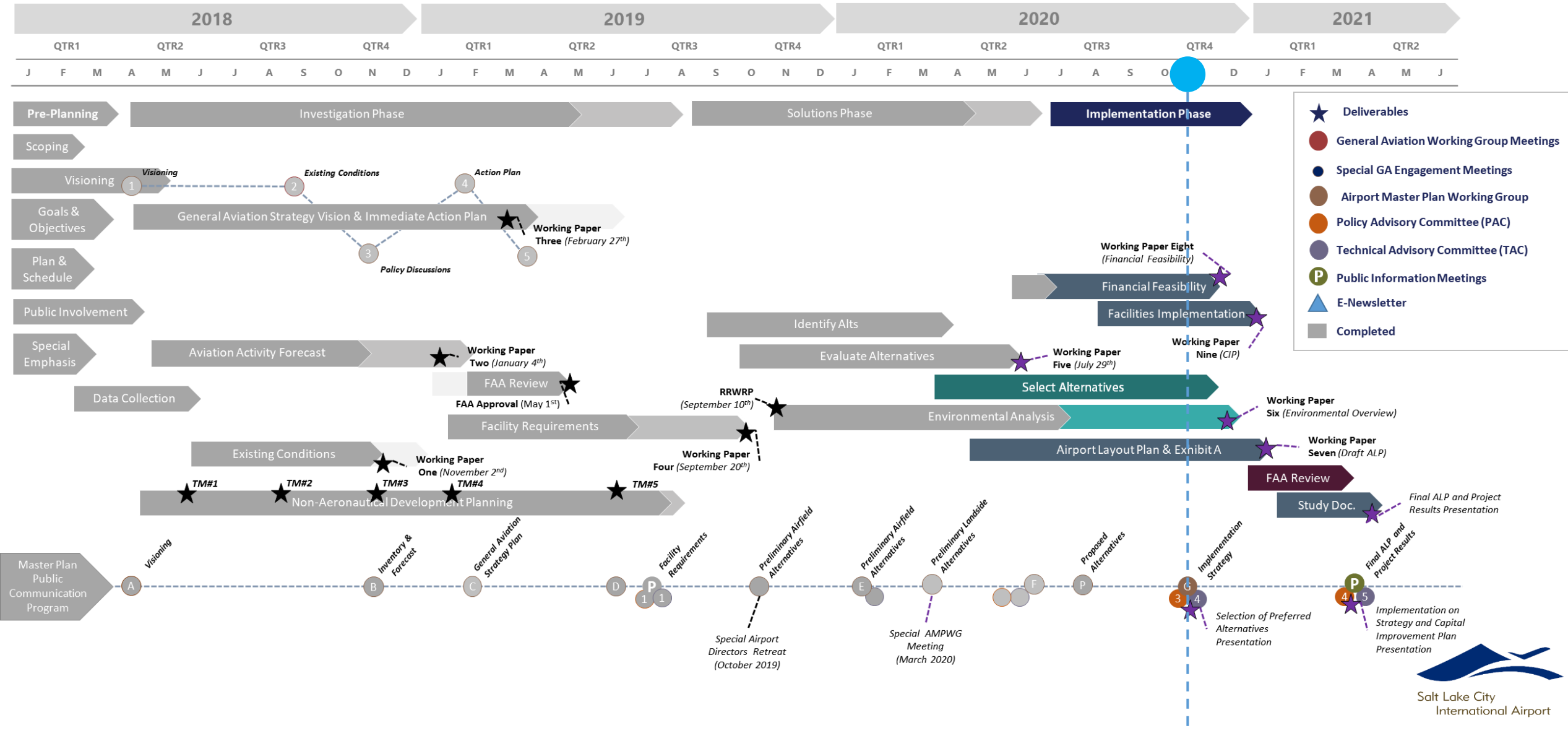
Facility Requirements Review

Solutions

Next Steps

Master Plan Schedule

● = We Are Here

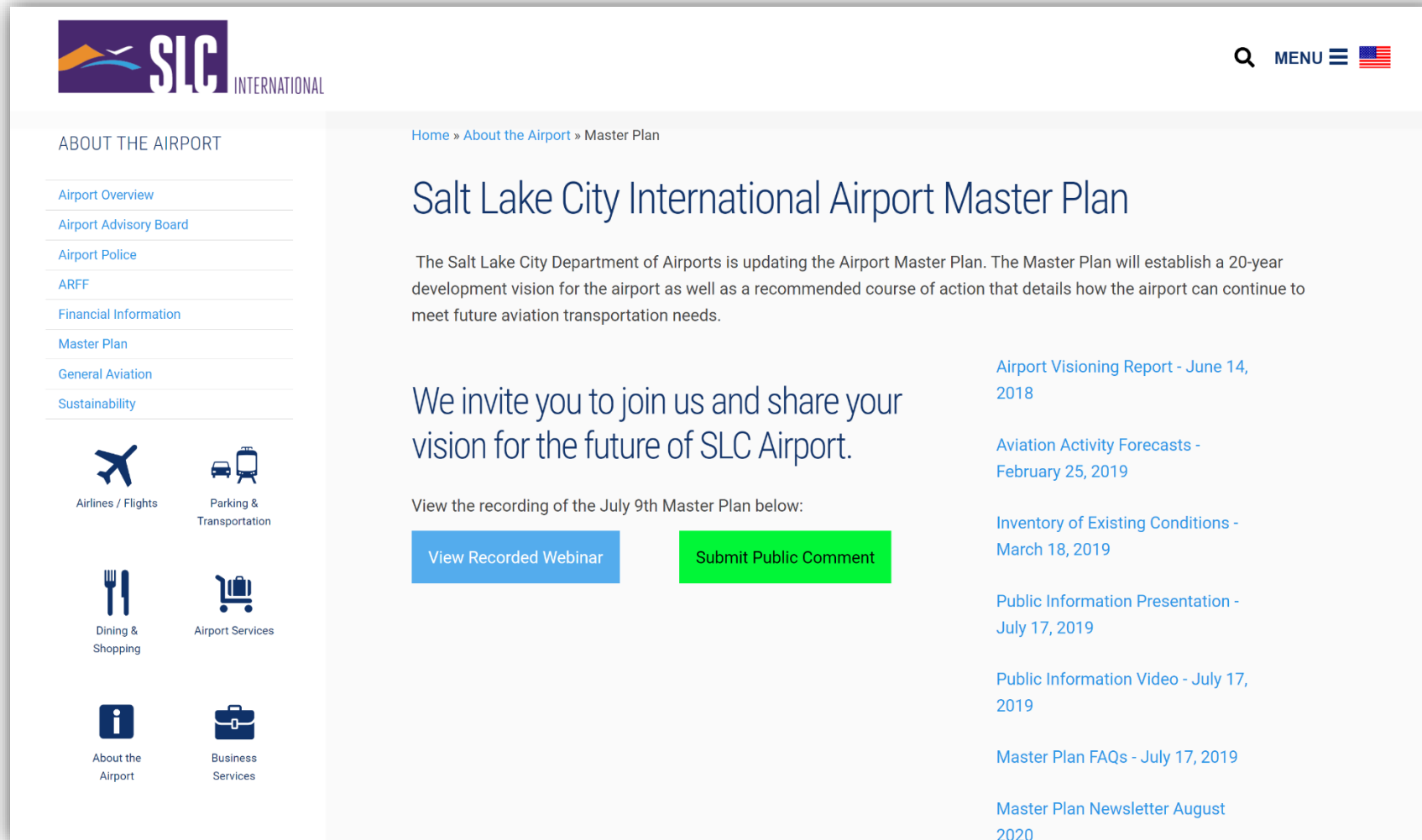


July's Virtual Public Information Meeting

- » 340 people registered
- » 290 unique views
- » 200 active attendees
- » 68 questions



July's Virtual Public Information Meeting



The screenshot shows the Salt Lake City International Airport website. The header features the SLC International logo on the left and search, menu, and US flag icons on the right. A left sidebar lists navigation options: ABOUT THE AIRPORT, Airport Overview, Airport Advisory Board, Airport Police, ARFF, Financial Information, Master Plan, General Aviation, and Sustainability. Below the sidebar are icons for Airlines / Flights, Parking & Transportation, Dining & Shopping, Airport Services, About the Airport, and Business Services. The main content area has a breadcrumb trail: Home » About the Airport » Master Plan. The title is "Salt Lake City International Airport Master Plan". The text states: "The Salt Lake City Department of Airports is updating the Airport Master Plan. The Master Plan will establish a 20-year development vision for the airport as well as a recommended course of action that details how the airport can continue to meet future aviation transportation needs." Below this is an invitation: "We invite you to join us and share your vision for the future of SLC Airport." Two buttons are present: "View Recorded Webinar" (blue) and "Submit Public Comment" (green). A list of documents is on the right: Airport Visioning Report - June 14, 2018; Aviation Activity Forecasts - February 25, 2019; Inventory of Existing Conditions - March 18, 2019; Public Information Presentation - July 17, 2019; Public Information Video - July 17, 2019; Master Plan FAQs - July 17, 2019; and Master Plan Newsletter August 2020.

<https://slcairport.com/about-the-airport/master-plan/>

July's Virtual Public Information Meeting



**SALT LAKE CITY INTERNATIONAL
AIRPORT MASTER PLAN UPDATE**
Public Information Meeting | Q&A Followup | July 9, 2020



SLC
INTERNATIONAL

MASTER PLAN QUESTIONS AND ANSWERS

How will bicycles transit the site? Is there any bicycle parking in the main garage?

Bicycle access to the new terminal remains unchanged. The main bicycle parking will be located on the UTA TRAX platform.

How is the airport considering the needs of people that commute by bike or walk to the industrial park to work as the airfield expands?

As airport facilities are developed that impact the bike path, the airport will work with the FAA and bicycle community to ensure a safe route to the airport and International Center is provided.

If you're always looking to be more sustainable, why aren't solar panels being installed?

SLCDA is always evaluating ways to increase sustainability. Although there are no plans to install solar panels on the parking structure, SLCDA has installed solar panels on ARFF Fire Stations 11 and 12 in the past year. These solar panels are providing the majority of the energy needs for each building.

Is the parking structure built for easier future expansion?

The parking structure was built with the ability to expand to the east and the west when demand warrants.

Will other major airlines start more routes with the new airport to hopefully lower passenger costs?

Agenda

Status Update

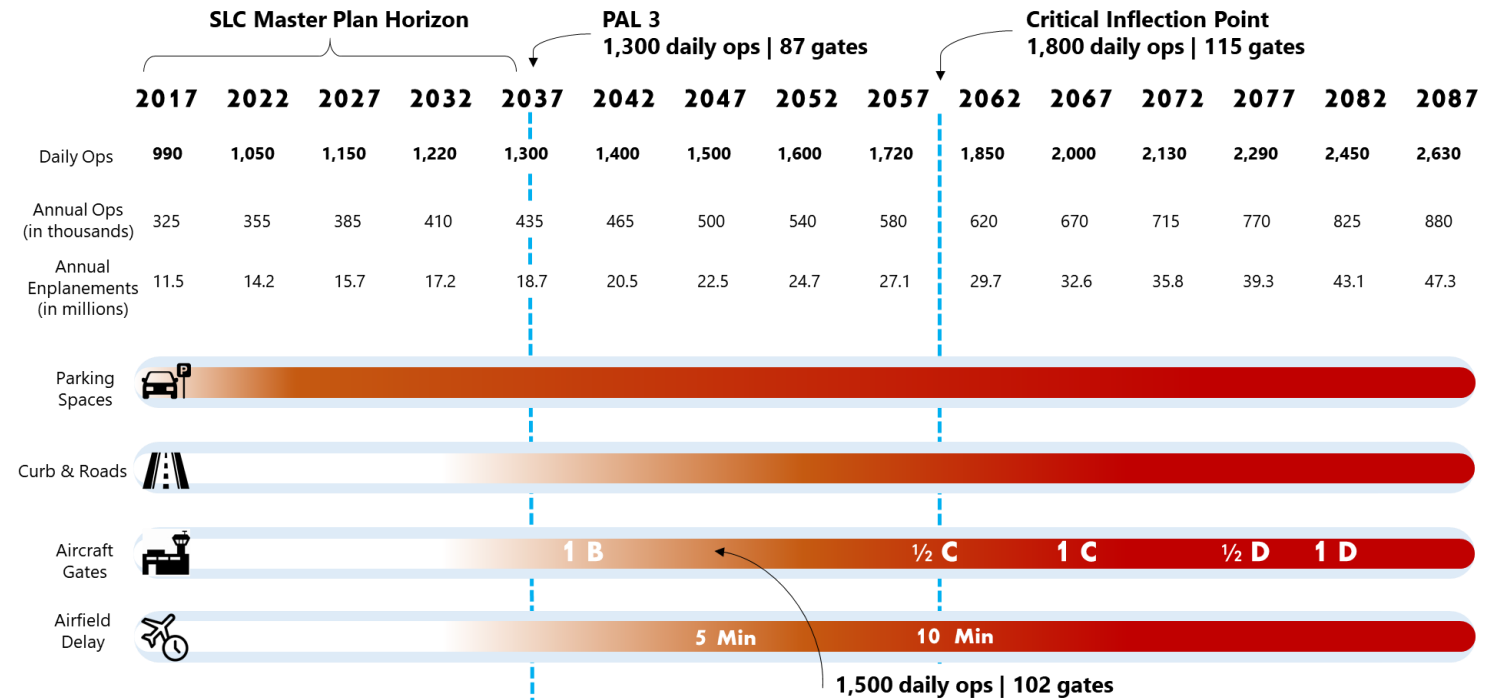
*Facility Requirements
Review*

Solutions

Next Steps

SLC Long Range Proportional Requirements

- » Additional parking needed within planning period
- » Current airfield capacity supports a full Concourse B
- » Airfield capacity need to support 1/2 built Concourse C
- » Capacity may never be able to support Concourse D
 - Existing facilities, Air Traffic Control Tower can remain in area
 - Land beyond Concourse C can have other uses

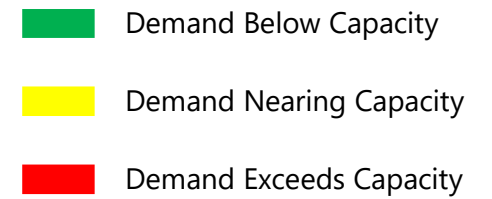
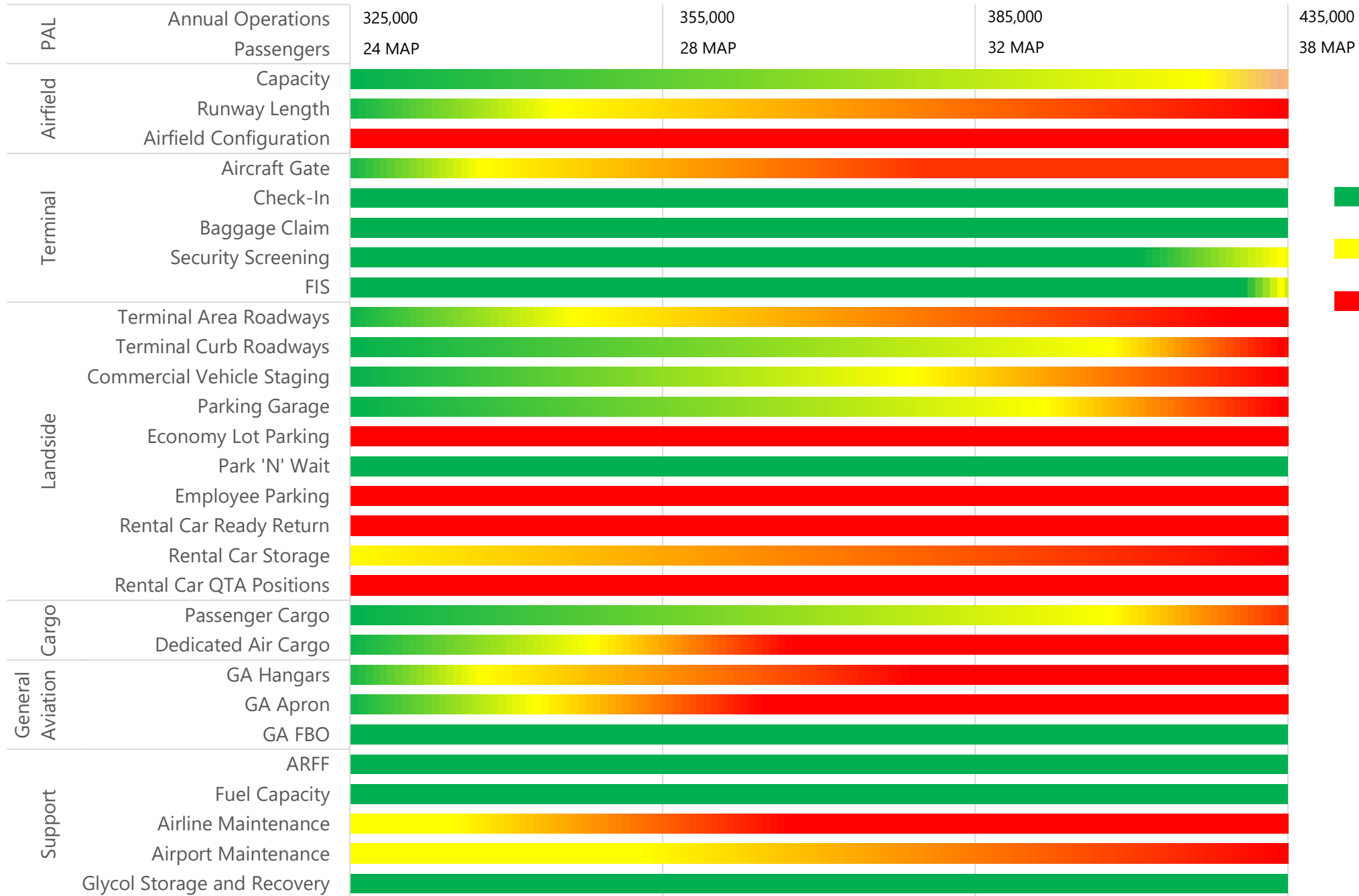


2017

PAL 1

PAL 2

PAL 3





Agenda

Status Update

Facility Requirements Review

Solutions

Next Steps

Which landside areas will have issues

Terminal Roadways

Traffic Count Location	PAL 1	PAL 2	PAL 3
1 - Inbound Terminal Dr.	C	C	C
2 - Outbound Terminal Dr.	B	B	C
3 - Exit to 3700 W	C	D	D
4 - Park 'n' Wait Entrance	B	B	C
5 - Park 'n' Wait Exit	B	C	C
6 - Terminal Ramp Return	A	B	B
7 - All Parking Exit	B	C	C
8 - Garage Exit	A	A	B
9 - Rental Car Return	C	C	D
10 - Rental Car Exit	D	D	E
11 - Terminal Curb Approach	C	C	D
12 - Terminal Approach	C	D	E
13 - Inbound Weave	C	C	D

Rental Car Space

Use	Base	PAL 1	PAL 2	PAL 3
QTA Fuel Positions	62	84	94	115
QTA Area (sf)	232k	314k	352k	430k
Storage	900	1,226	1,706	2,259
Ready Return	1,122	1,438	1,610	1,958

Parking Space

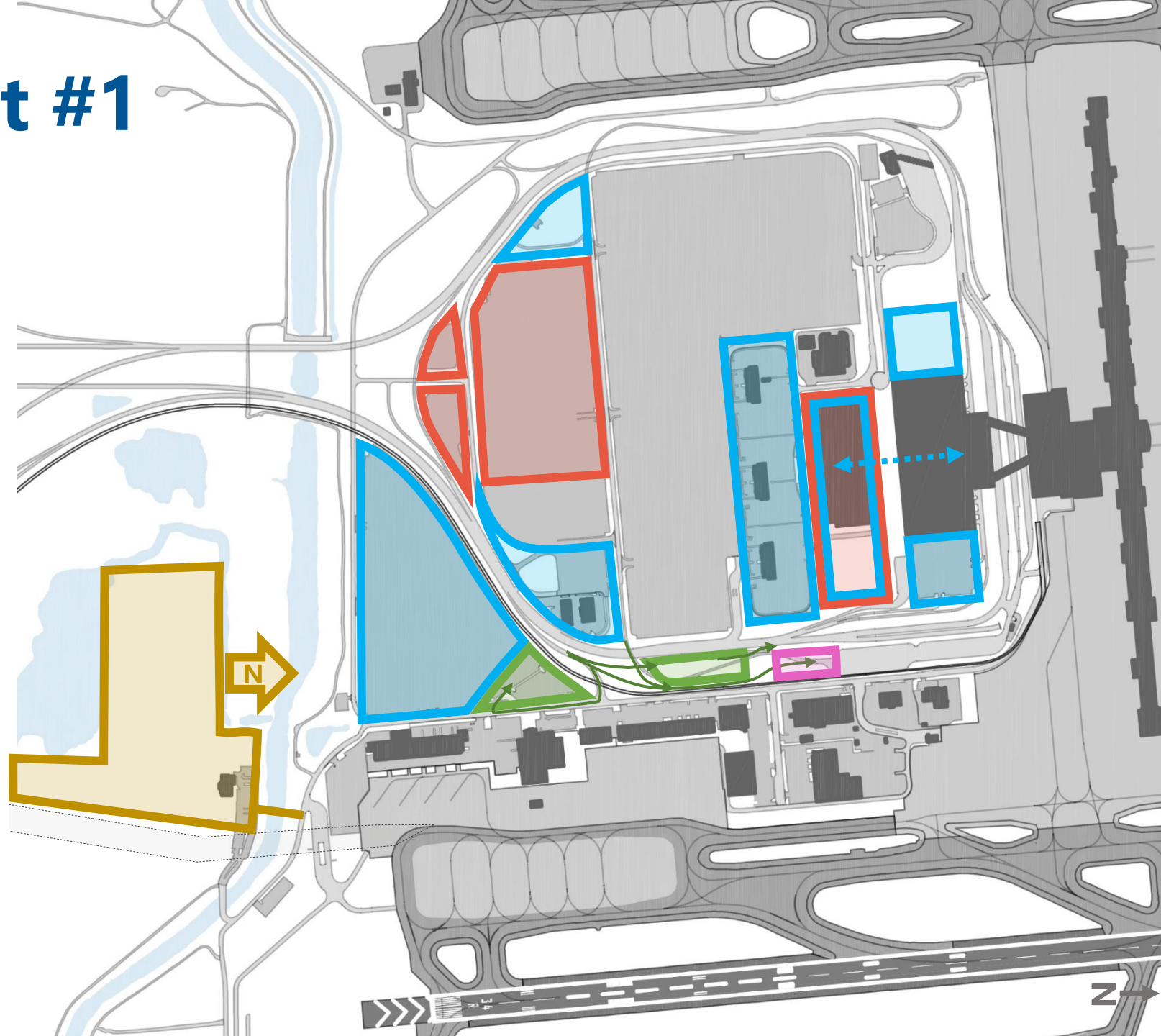
Use	Base	PAL 1	PAL 2	PAL 3
Surface Parking	10,463	12,629	14,326	16,931
Garage Parking	3,600	2,851	3,195	3,884
Park 'n' Wait Lot	131	70	78	95
Service Center	31	42	47	58
Employee Parking	3,200	3,508	3,800	4,589
CV Staging	113	103	115	141

Terminal Curb

	PAL 1	PAL 2	PAL 3
Departures Road	A	A	A
Inner Arrivals Road	A	A	A
Center Arrivals	A	A	D
Outer Arrivals	A	A	A

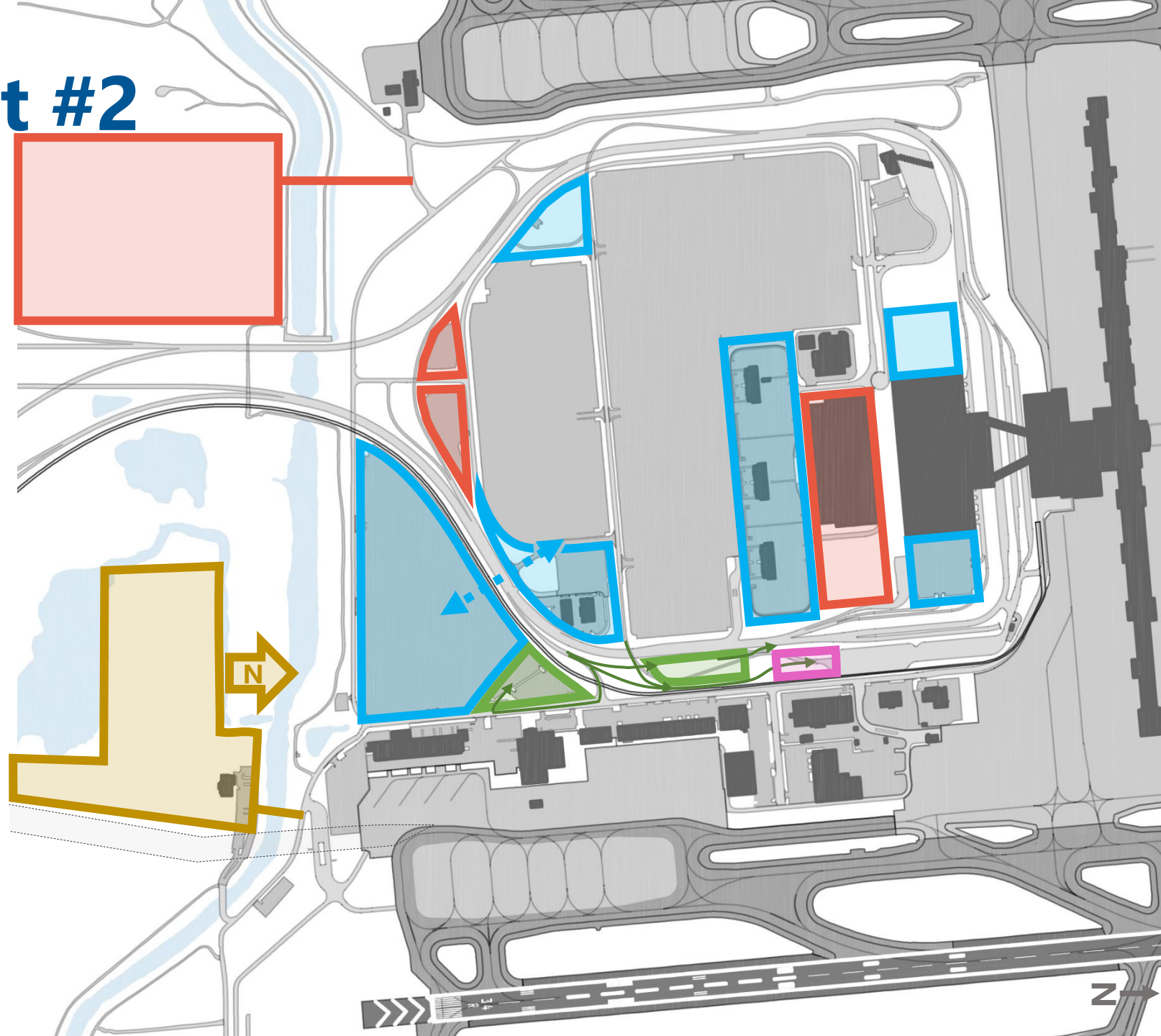
Landside Concept #1 Summary

Use	PAL 3	#1
Surface Parking	16,931	13,150
Garage Parking	3,884	7,700
<i>All Public Parking</i>	<i>20,815</i>	<i>20,850</i>
RAC Ready Return	1,958	2,000
RAC Storage	2,259	2,500
RAC QTA (sf)	430k	430k
Park 'n' Wait Lot	95	100
Service Center	58	60
Employee Parking	4,500	4,500
CV Staging	141	141



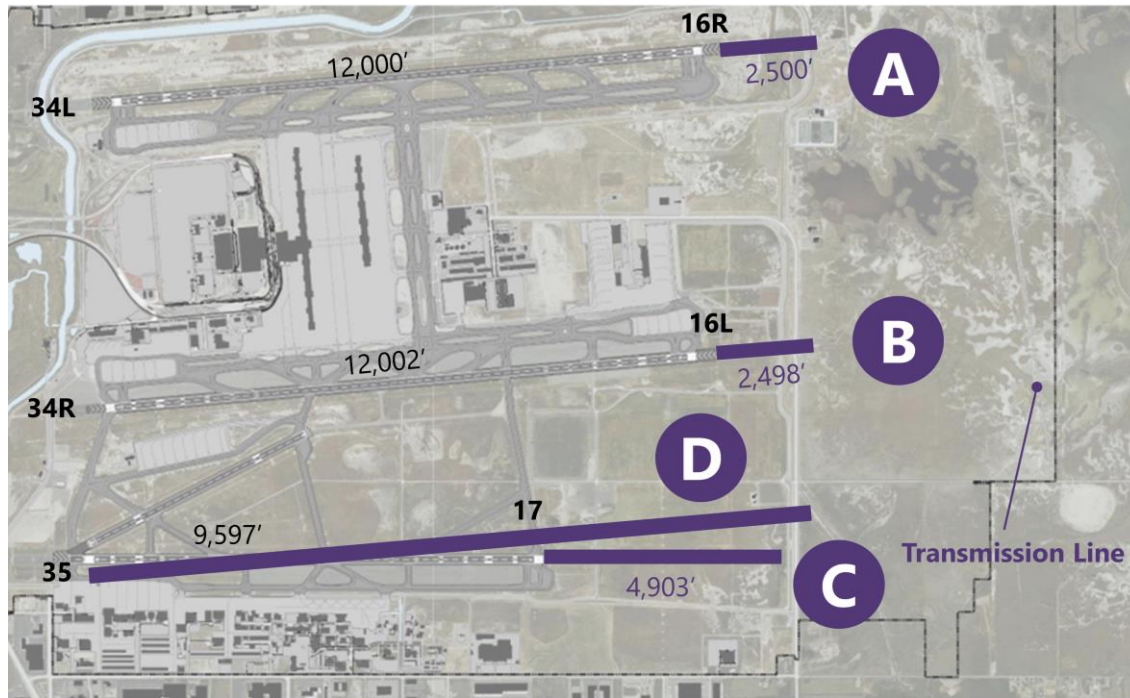
Landside Concept #2 Summary

Use	PAL 3	#2
Surface Parking	16,931	16,100
Garage Parking	3,884	5,600
<i>All Public Parking</i>	<i>20,815</i>	<i>21,700</i>
RAC Ready Return	1,958	2,000
RAC Storage	2,259	2,300
RAC QTA (sf)	430k	430k
Park 'n' Wait Lot	95	100
Service Center	58	60
Employee Parking	4,500	4,500
CV Staging	141	141

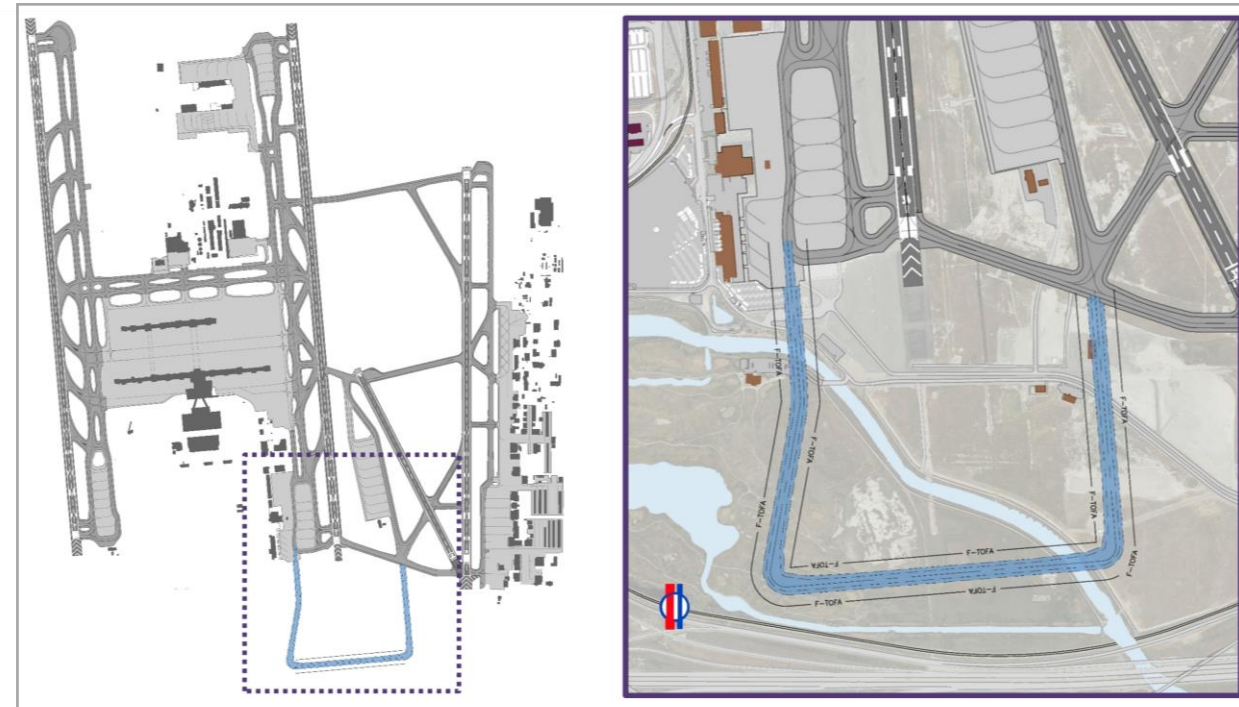


Airfield Enhancements Examined

Runway Extension

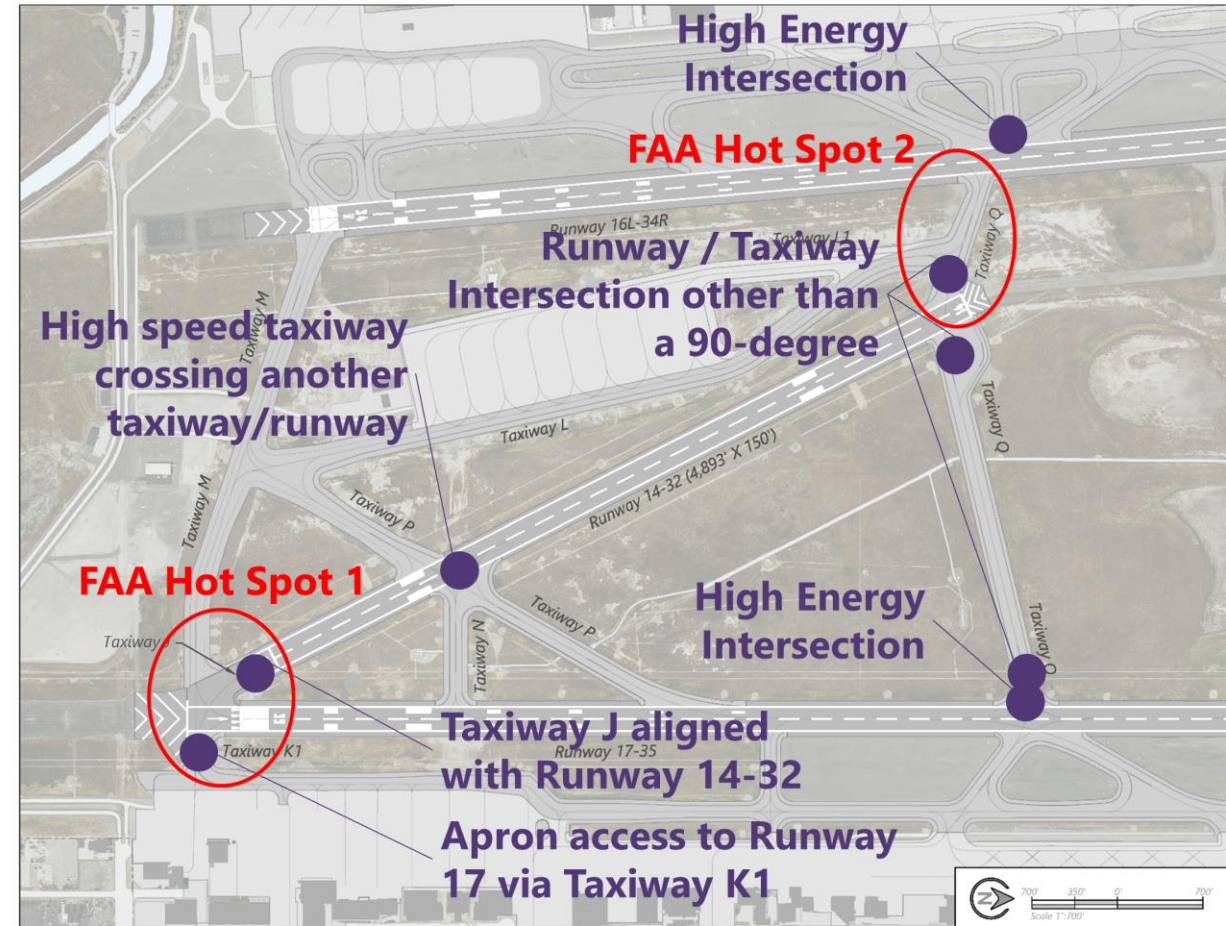


End Around Taxiway



Runway 14-32 Deficiency Solutions Examined

- » Potential Solutions Examined:
 - Bring up to standards
 - Shorten Runway 14-32
 - Close Runway 14-32



Runway 17-35 Enhancements

Runway 17-35 Approach Procedures

Incorporate NextGEN technologies and possibly enhance decision altitudes and visibility minimums

Obstacle Mitigation

Existing vegetation, transmission line, and roadway signs can impact Runway 17-35 approaches

Optimal High-Speed Taxiway Exits

Optimizing high-speed taxiways may qualify Runway 17-35 for reduced final approach spacing

Runway 35 Threshold Shift

Shifting runway north may allow for enhanced scanning by Air Traffic Control

Extend Runway 17-35

Extension beyond 9,597' allow aircraft to reach east coast during hottest days and increase flexibility

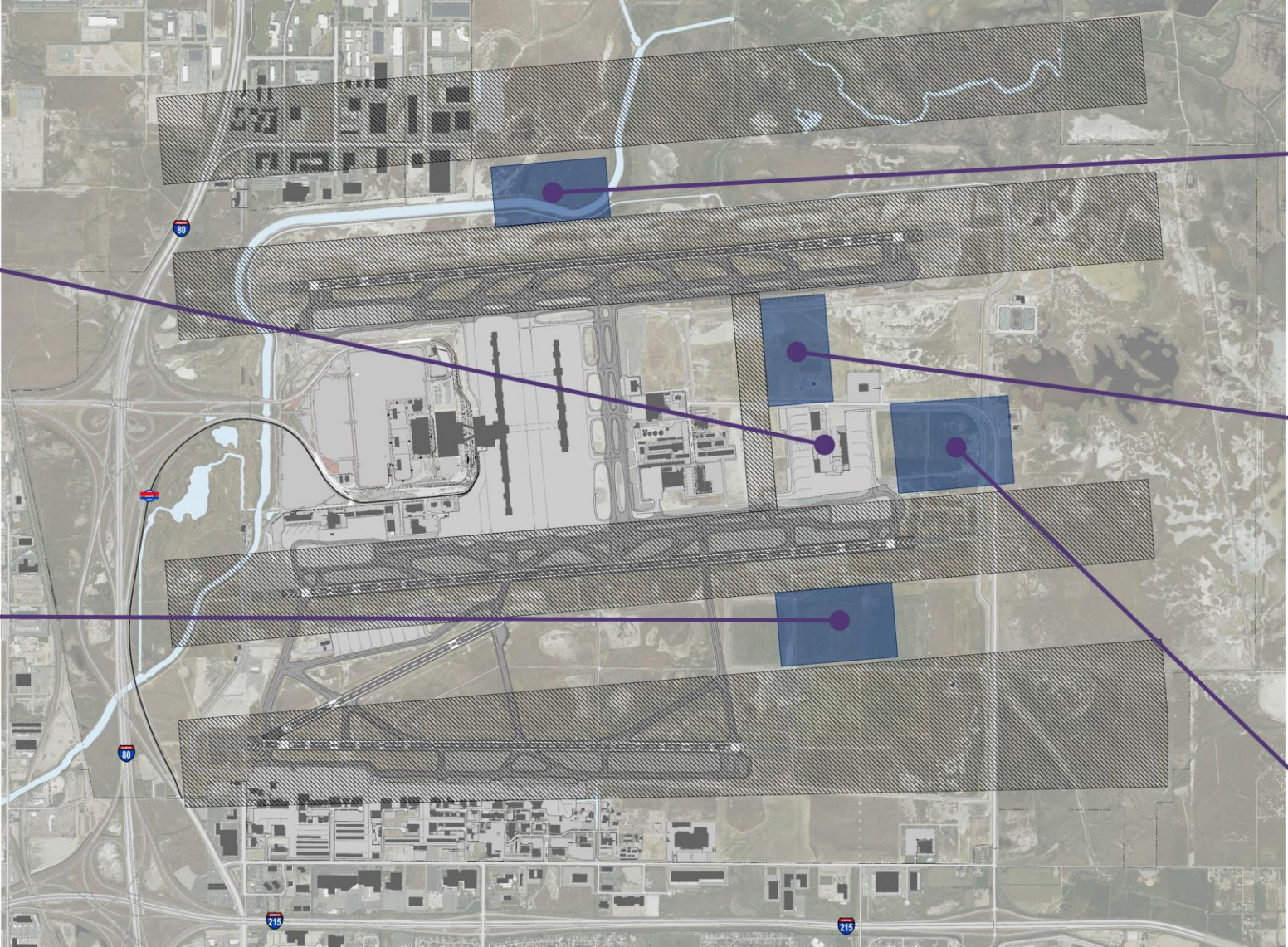
Realign Runway 17-35

Realigning Runway 17-35 provides increased capacity and delay need for west runway

Cargo Site Alternatives

Existing Cargo

Option 4
Available space,
minimal existing
infrastructure



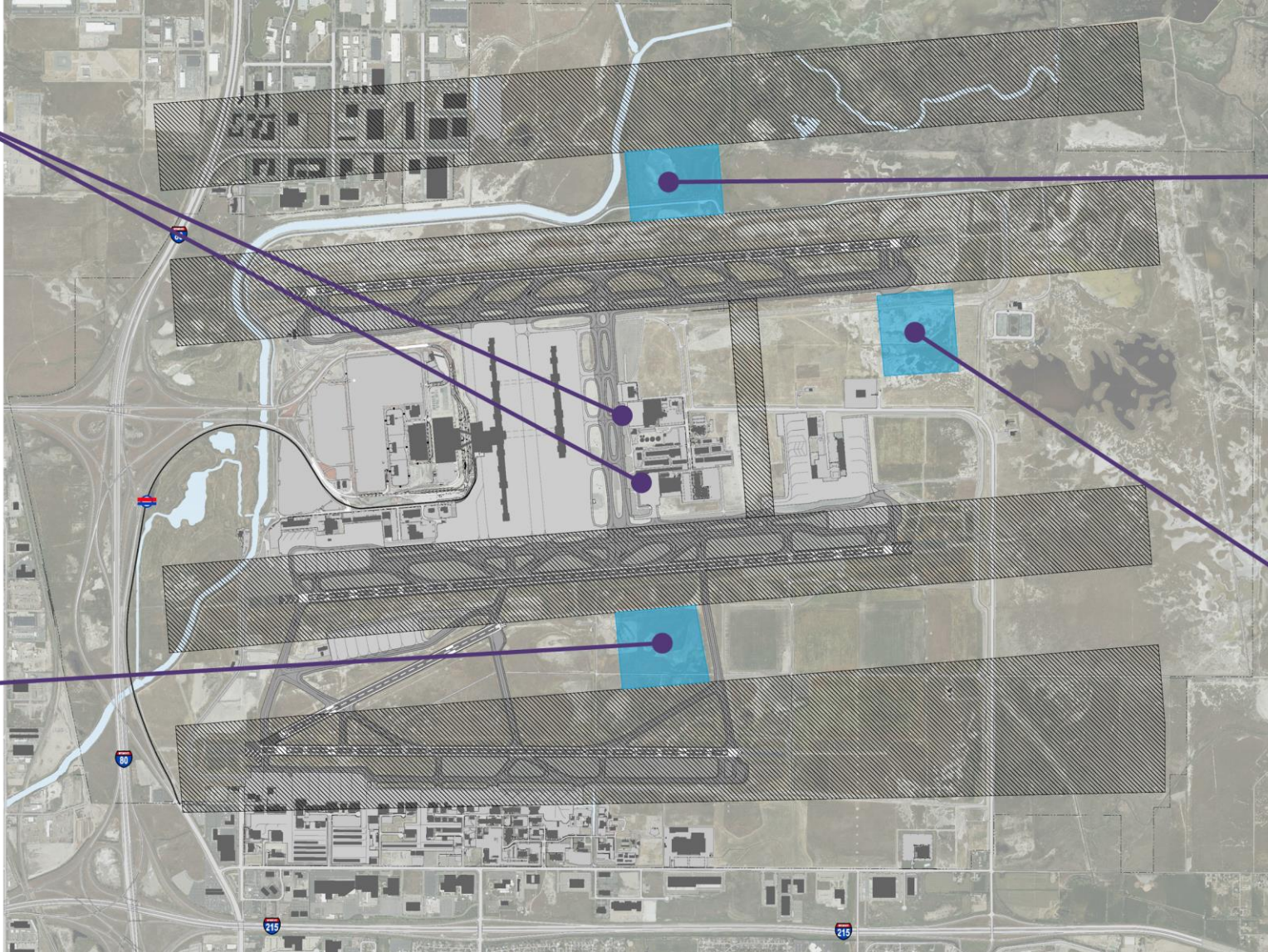
Option 1
Connectivity to NW
Quadrant, increased
wetland impact &
runway crossings

Option 2
Immediate
expandability,
connectivity to
taxiway system

Option 3
On current Airport
Layout Plan, requires
taxiway extension

Airline Maintenance Site Alternatives

Existing Airline Maintenance, impacted by Concourse C



Option 1
Runway crossing to access terminal, wetland impacts, minimal existing infrastructure

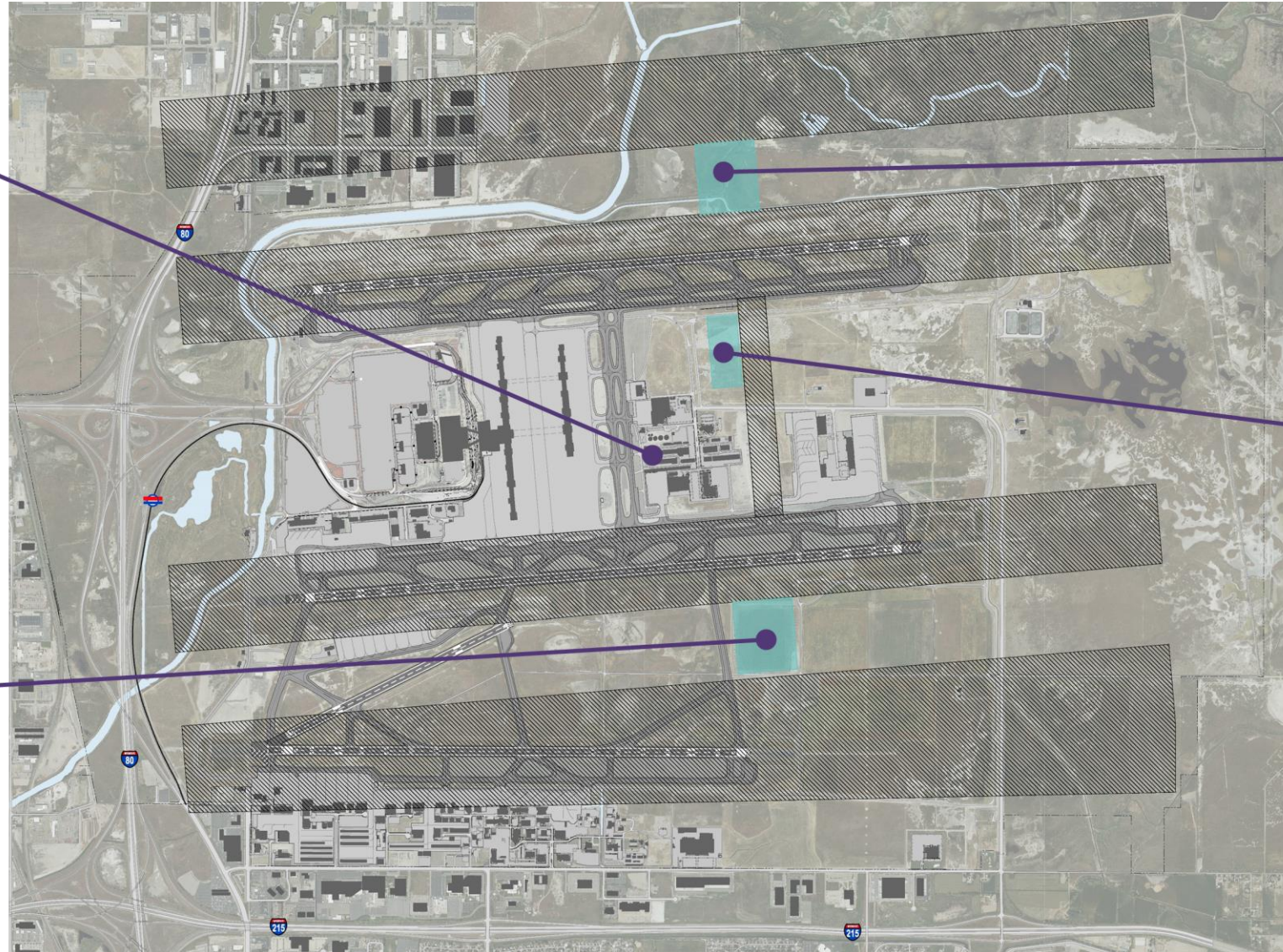
Option 2
Easy access to terminal, some wetland impacts

Option 3
Available space, minimal existing infrastructure, runway crossing required to access terminal

Airport Maintenance Site Alternatives

Existing site partially impacted by $\frac{3}{4}$ Concourse C, potential future airside/landside split for screening

Option 3
On current Airport Layout Plan, entire campus can be relocated, minimal existing infrastructure



Option 1
Wetland impacts, not centrally located, minimal existing infrastructure

Option 2
Facilities not impacted by Concourse C remain, centrally located



Agenda

Status Update

Facility Requirements Review

Solutions

Next Steps

Next Steps

- » Finalize alternative concepts
- » Select preferred alternatives
- » Begin developing Implementation Strategy
- » Board update
- » Continue Public Communication Program
 - Last Public Open House 1st Quarter 2021
- » Final documentation end of 1st Quarter 2021

SALT LAKE CITY AIRPORT BOARD

AGENDA: DISCUSSION ITEM (D)
DATE: 18 NOVEMBER 2020
TO: Airport Board
FROM: Bill Wyatt, Executive Director
SUBJECT: **Nominations for Board Chair and Vice-Chair**

The Board will be asked to make nominations for a new Board Chair and Vice-Chair. Voting will be conducted at the January 2021 meeting.

Airport Advisory Board Nominations and Elections Protocol

Nominations for Officers

Nominations are made during the last scheduled Board meeting of that calendar year, typically in November or December.

First, the Board Chair opens the floor to nominations for Chair:

“Nominations are now open for Board Chair for Calendar Year _____”

After nominations are complete or appear to be complete, a Board Member should make this motion:

“I move that nominations for Board Chair be closed.”

The Board Chair then asks for consent:

“A motion has been made to close the floor to nominations for Chair. All in favor say ‘aye.’ Opposed? The motion carries.”

Next, the Board Chair opens the floor to nominations for Vice-Chair:

“Nominations are now open for Board Vice-Chair for Calendar Year _____”

After nominations are complete or appear to be complete, a Board Member should make this motion:

“I move that nominations for Board Vice-Chair be closed.”

The Board Chair then asks for consent:

“A motion has been made to close the floor to nominations for Vice-Chair. All in favor say ‘aye.’ Opposed? The motion carries.”

The Board Chair should then state that elections will be held at the regularly scheduled January Board meeting.

Elections

At the January meeting, the Board Chair calls for a vote, reminding members of who was nominated. If only one person was nominated for Chair and one for Vice-Chair, the Board Chair only needs to ask for a **“Vote by Acclamation.”** If more than one person was nominated for either office, the Board Chair calls for a vote. The new Chair and Vice-Chair take office at the February meeting.



Advisory Board
Meeting

November 18, 2020

Information

SALT LAKE CITY DEPARTMENT OF AIRPORTS
(An Enterprise Fund of Salt Lake City Corporation)
Statements of Net Position (Unaudited)
(Amounts in Thousands)

<i>As of September 30,</i>	2020	2019
ASSETS		
Current Assets		
Cash and cash equivalents	\$ 86,372	\$ 274,496
Restricted cash and cash equivalents	29,744	392,679
Restricted investments	21,760	-
Investments	102,091	12,599
Airline and rental fees receivable	22,844	27,134
Other assets	153	4,220
Total current assets	262,964	711,128
Noncurrent Assets		
Restricted cash and cash equivalents	107,553	16,550
Restricted investments	65,322	462,522
Investments	20,702	33,872
Loans receivable	23,193	-
Other assets	1,367	254
Total noncurrent assets and investments	218,137	513,198
Capital assets		
Land	111,696	105,129
Building and improvements	1,419,993	1,415,726
Equipment	169,490	152,311
Construction in progress	2,516,839	1,741,014
Total capital assets - at cost	4,218,018	3,414,180
Less accumulated depreciation	1,095,079	1,049,988
Net capital assets	3,122,939	2,364,192
Total noncurrent assets	3,341,076	2,877,390
Total Assets	3,604,040	3,588,518
Deferred Outflows of Resources	4,521	7,002
Total Assets and Deferred Outflows of Resources	\$ 3,608,561	\$ 3,595,520

SALT LAKE CITY DEPARTMENT OF AIRPORTS
(An Enterprise Fund of Salt Lake City Corporation)
Statements of Net Position (Unaudited)
(Amounts in Thousands)

<i>As of September 30,</i>	2020	2019
LIABILITIES		
Current Liabilities		
Accounts payable	\$ 28,545	\$ 15,562
Accrued compensation	2,469	1,983
Interest payable	23,194	23,194
Other accrued liabilities	44,167	8,267
Total current liabilities	98,375	49,006
Noncurrent Liabilities		
Revenue bonds payable	2,038,302	2,045,658
Noncurrent compensation liability	3,801	3,556
Net pension liability	8,431	17,737
Other accrued liabilities	49,574	53,517
Total noncurrent liabilities	2,100,108	2,120,468
Total Liabilities	2,198,483	2,169,474
Deferred Inflows of Resources		
Deferred inflows - revenue collected in advance	5,893	4,314
Deferred inflows - pension	4,993	652
Total Deferred Inflows of Resources	10,886	4,966
NET POSITION		
Net investment in capital assets	1,260,835	1,042,574
Restricted for		
Capital projects	48,170	54,935
Debt service	175,833	263,310
Unrestricted	(85,646)	60,261
Net Position	1,399,192	1,421,080
Total Liabilities, Deferred Inflows of Resources, and Net Position	\$ 3,608,561	\$ 3,595,520

SALT LAKE CITY DEPARTMENT OF AIRPORTS

(An Enterprise fund of Salt Lake City Corporation)

Statements of Revenues, Expenses, and Changes in Fund Net Position (Unaudited)

(Amounts in Thousands)

<i>for the Three month period ended September,</i>	2020	2019
Operating Revenues		
Airline revenue	\$ 25,123	\$ 22,161
Terminal concessions	1,730	5,601
Landside concessions	8,576	19,087
Lease revenue	1,437	1,793
General aviation	801	854
State aviation tax	465	818
Other revenue	839	1,031
Operating revenues	38,971	51,345
Less airline revenue sharing	(1,435)	(3,658)
Total operating revenues	37,536	47,687
Operating Expenses		
Salaries and benefits	12,606	12,048
Materials and supplies	1,736	1,985
Maintenance contracts	2,049	2,781
Charges and services	3,203	2,108
Utilities	879	1,089
Inter-governmental	3,734	4,099
Other expenses	1,706	1,839
Total operating expenses before depreciation	25,913	25,949
Operating Income Before Depreciation	11,623	21,738
Depreciation Expense	14,324	16,545
Operating Income (Loss)	(2,701)	5,193
Non-Operating Revenues (Expenses)		
Passenger facility charges	4,825	12,622
Customer facility charges	1,045	4,195
Interest income	29	5,911
Interest expense	(27,345)	(21,507)
Other revenue (expenses), net	41	1,382
Net non-operating income (loss)	(21,405)	2,603
Capital Contributions		
Contributions and grants	(7,274)	(3,868)
Total capital contributions	(7,274)	(3,868)
Net Position		
Increase (decrease) in net position	(31,380)	3,928
Net Position, beginning of period	1,430,572	1,417,152
Net Position, end of period	\$ 1,399,192	\$ 1,421,080

SALT LAKE CITY DEPARTMENT OF AIRPORTS
(An Enterprise fund of Salt Lake City Corporation)
OPERATING REVENUES AND EXPENDITURES TO BUDGET (Unaudited)
(Amounts in Thousands)

	Jul 2020 - Sep 2020 ACTUALS	Jul 2020 - Sep 2020 BUDGET	SURPLUS/ DEFICIT	PERCENT CHANGE
Revenues				
Landing Fees	\$ 11,524	\$ 14,667	\$ (3,143)	-21.4%
Fuel Farm	135	135	-	0.0%
Aircraft Remain Overnight Fees	111	56	55	96.8%
Cargo Bldg. & Ramp Use Fee	435	413	22	5.3%
Security Charges to TSA	160	195	(35)	-18.0%
Extraordinary Service Charges	57	10	47	451.1%
Passenger Boarding Bridges	375	478	(103)	-21.5%
Tenant Telephone Fees	67	59	8	14.1%
Terminal Rents	11,481	19,252	(7,771)	-40.4%
General Aviation Hangars	342	310	32	10.5%
FBO Hangars/Fuel Oil Royalty	130	108	22	20.3%
Flight Kitchens	270	292	(22)	-7.7%
Other Buildings & Office Space	1,476	1,407	69	4.9%
Food Service & Vending	1,107	2,216	(1,109)	-50.0%
News/Gift Shop	602	1,275	(673)	-52.8%
Car Rental	4,645	5,170	(525)	-10.2%
Leased Site Areas	752	711	41	5.8%
Auto Parking/Ground Transportation	3,928	8,396	(4,468)	-53.2%
Advertising	21	190	(169)	-88.9%
State Aviation Fuel Tax	465	462	3	0.6%
Military	39	39	-	0.0%
Glycol Recycling Sales	57	32	25	79.4%
Auxiliary Airport Fuel Sales	328	422	(94)	-22.3%
Other	464	2,130	(1,666)	-78.2%
Less: Airline Revenue Sharing	(1,435)	(2,020)	585	-28.98%
Total Operating Revenues	37,536	56,405	(18,869)	-33.5%
Expenses				
Salary & Wages	8,673	11,481	2,808	24.5%
Employee Benefits	4,232	5,536	1,304	23.6%
Maintenance Supplies	969	2,068	1,099	53.1%
Automotive Supplies	571	761	190	25.0%
Other Supplies	196	1,251	1,055	84.3%
Insurance Premiums	1,469	952	(517)	-54.3%
Janitorial Service	1,493	3,135	1,642	52.4%
Maintenance Contracts	557	1,037	480	46.3%
Other Contractual Services	1,610	4,544	2,934	64.6%
Professional & Tech Services	1,593	1,453	(140)	-9.7%
Utilities	879	1,904	1,025	53.8%
Administrative Service Fee	344	460	116	25.2%
Aircraft Rescue Fire Fighting	1,315	1,315	(0)	0.0%
Police Services	2,075	2,075	(0)	0.0%
Other Expenses	237	731	494	67.5%
Contingency Reserve	-	250	250	100.0%
Operating Expenses Before Capitalized Salaries	26,213	38,953	12,740	32.7%
Capitalized Salaries	300	300	-	0.0%
Total Operating Expenses	25,913	38,653	12,740	33.0%
Operating Income	\$ 11,623	\$ 17,752	\$ (6,129)	-34.5%

SALT LAKE CITY DEPARTMENT OF AIRPORTS

(An Enterprise fund of Salt Lake City Corporation)

OPERATING REVENUES AND EXPENDITURES TO PRIOR YEAR (Unaudited)

(Amounts in Thousands)

	Jul 2020 - Sep 2020		Jul 2019 - Sep 2019		DOLLAR CHANGE	PERCENT CHANGE
Revenues						
Landing Fees	\$	11,524	\$	10,673	\$ 851	8.0%
Fuel Farm		135		135	-	0.0%
Aircraft Remain Overnight Fees		111		61	50	83.2%
Cargo Bldg. & Ramp Use Fee		435		404	31	7.6%
Security Charges to TSA		160		154	6	4.2%
Extraordinary Service Charges		57		4	53	1372.0%
Passenger Boarding Bridges		375		458	(83)	-18.1%
Tenant Telephone Fees		67		68	(1)	-0.8%
Terminal Rents		11,481		9,942	1,539	15.5%
General Aviation Hangars		342		340	2	0.5%
FBO Hangars/Fuel Oil Royalty		130		108	22	20.2%
Flight Kitchens		270		483	(213)	-44.0%
Other Buildings & Office Space		1,476		1,398	78	5.6%
Food Service & Vending		1,107		3,339	(2,232)	-66.8%
News/Gift Shops		602		1,984	(1,382)	-69.7%
Car Rental		4,645		8,410	(3,765)	-44.8%
Leased Site Areas		752		708	44	6.2%
Auto Parking/Ground Transportation		3,928		10,667	(6,739)	-63.2%
Advertising		21		279	(258)	-92.5%
State Aviation Fuel Tax		465		818	(354)	-43.3%
Military		39		38	1	1.4%
Glycol Recycling Sales		57		32	25	79.4%
Auxiliary Airport Fuel Sales		328		406	(78)	-19.2%
Other		464		436	28	6.5%
Less: Airline Revenue Sharing		(1,435)		(3,658)	2,223	-60.8%
Operating Revenues		37,536		47,687	(10,151)	-21.3%
Expenses						
Salary & Wages	\$	8,673	\$	8,332	\$ 341	4.1%
Employee Benefits		4,232		4,031	201	5.0%
Maintenance Supplies		969		1,062	(93)	-8.7%
Automotive Supplies		571		677	(106)	-15.6%
Other Supplies		196		247	(51)	-20.6%
Insurance Premiums		1,469		1,478	(9)	-0.6%
Janitorial Service		1,493		2,233	(740)	-33.2%
Maintenance Contracts		557		547	10	1.9%
Other Contractual Services		1,610		1,510	100	6.6%
Professional & Tech Service		1,593		597	996	166.7%
Utilities		879		1,089	(210)	-19.2%
Administrative Service Fee		344		2,822	(2,478)	-87.8%
Aircraft Rescue Fire Fighting		1,315		1,277	38	3.0%
Police Services		2,075		-	2,075	0.0%
Other Expenses		237		362	(125)	-34.5%
Operating Expenses Before Capitalized Salaries		26,213		26,264	(51)	-0.2%
Capitalized Salaries		300		315	(15)	-4.9%
Total Operating Expenses		25,913		25,949	(36)	-0.1%
Operating Income	\$	11,623	\$	21,738	\$ (10,115)	-46.5%



**SALT LAKE CITY INTERNATIONAL AIRPORT
AIR TRAFFIC STATISTICS AND ACTIVITY REPORT
NINE MONTHS ENDED SEPTEMBER 2020**

	September 2020	CHANGE	YTD 2020	CHANGE	12 MO ROLLING Ending 09/2020	CHANGE
PASSENGERS						
<i>DOMESTIC</i>						
Enplaned	486,064	-53.79%	4,581,690	-52.73%	7,734,695	-38.93%
Deplaned	484,834	-53.21%	4,558,001	-52.88%	7,732,367	-38.98%
TOTAL DOMESTIC	970,898	-53.51%	9,139,691	-52.80%	15,467,062	-38.95%
<i>INTERNATIONAL</i>						
Enplaned	5,583	-88.05%	121,046	-71.84%	240,467	-55.08%
Deplaned	5,463	-88.53%	136,533	-69.21%	259,583	-52.80%
TOTAL INTERNATIONAL	11,046	-88.29%	257,579	-70.51%	500,050	-53.92%
TOTAL PASSENGERS	981,944	-55.01%	9,397,270	-53.57%	15,967,112	-39.57%
LANDED WEIGHT						
Air Carriers	900,976,295	-23.29%	7,637,769,782	-29.92%	11,260,684,716	-21.42%
Cargo Carriers	104,527,120	19.80%	932,122,165	8.74%	1,283,176,687	7.01%
TOTAL LANDED WEIGHT (LBS)	1,005,503,415	-20.31%	8,569,891,947	-27.10%	12,543,861,403	-19.23%
MAIL						
Enplaned	3,520,611	78.66%	24,996,192	25.32%	31,792,204	24.44%
Deplaned	2,274,225	97.69%	14,374,115	33.06%	18,410,690	27.49%
TOTAL MAIL (LBS)	5,794,836	85.67%	39,370,307	28.04%	50,202,894	25.54%
CARGO						
Enplaned	17,768,914	24.11%	150,713,761	4.96%	203,865,311	3.50%
Deplaned	17,877,923	17.00%	151,617,131	1.43%	207,408,181	-0.44%
TOTAL CARGO (LBS)	35,646,837	20.44%	302,330,892	3.16%	411,273,492	1.47%
MAIL & CARGO						
Enplaned	8,884	24.11%	75,357	4.96%	101,933	3.50%
Deplaned	8,939	17.00%	75,809	1.43%	103,704	-0.44%
TOTAL MAIL & CARGO (TONS)	17,823	20.44%	151,166	3.16%	205,637	1.47%
AIRCRAFT OPERATIONS						
Passenger Aircraft	15,990	-22.92%	135,014	-30.07%	198,404	-22.12%
All-Cargo Aircraft	1,358	-10.78%	14,922	0.44%	20,450	-0.26%
General Aviation	6,331	17.76%	49,462	0.93%	64,169	2.84%
Military	319	17.28%	2,277	-35.82%	2,797	-42.88%
TOTAL AIRCRAFT OPERATIONS	23,998	-14.03%	201,675	-22.58%	285,820	-16.56%

**SALT LAKE CITY INTERNATIONAL AIRPORT
PASSENGER TRAFFIC REPORT
NINE MONTHS ENDED SEPTEMBER 2020**

	September 2019	September 2020	% CHANGE	YTD 2019	YTD 2020	% CHANGE	12 MO ROLLING Ending 09/2020	% CHANGE
ENPLANED PASSENGERS								
AEROMEXICO	3,865	-	-100.0%	37,572	11,436	-69.6%	23,549	-52.6%
ALASKA	13,100	1	-100.0%	138,216	42,893	-69.0%	68,461	-61.6%
Horizon Air / Alaska	2,012	1,544	-23.3%	2,301	6,608	187.2%	12,070	424.6%
Skywest / Alaska	12,043	7,129	-40.8%	112,664	62,296	-44.7%	104,522	-31.0%
AMERICAN	45,096	27,000	-40.1%	477,846	262,851	-45.0%	404,666	-33.3%
Compass	1,969	-	-100.0%	18,231	6,563	-64.0%	13,298	-43.6%
Envoy Air	-	344	100.0%	-	733	100.0%	733	932.4%
American/Mesa Air	1,801	-	-100.0%	6,137	-	-100.0%	146	-97.6%
Republic	-	629	100.0%	-	629	100.0%	629	100.0%
SkyWest (American)	6,575	5,918	-10.0%	63,080	37,805	-40.1%	56,502	-38.2%
DELTA	603,410	276,908	-54.1%	5,404,892	2,519,489	-53.4%	4,378,760	-37.4%
SkyWest (Delta Connection)	174,273	96,298	-44.7%	1,533,468	829,482	-45.9%	1,361,201	-33.1%
Compass (Delta Connection)	19,344	-	-100.0%	354,609	-	-100.0%	32,979	-92.9%
FRONTIER	22,457	13,128	-41.5%	179,224	98,191	-45.2%	164,183	-33.7%
JETBLUE	29,623	3,369	-88.6%	288,462	100,373	-65.2%	193,025	-47.4%
KLM ROYAL DUTCH AIRLINES	3,260	-	-100.0%	17,889	-	-100.0%	2,393	-88.1%
SOUTHWEST	108,549	40,594	-62.6%	1,006,419	495,949	-50.7%	787,777	-40.0%
UNITED	16,590	6,231	-62.4%	186,570	106,243	-43.1%	145,318	-42.8%
GoJet Airlines	3,269	-	-100.0%	14,736	-	-100.0%	1,180	-92.3%
Express Jet	-	-	0.0%	3,710	600	-83.8%	3,120	-17.0%
Mesa Airlines (United Express)	3,888	-	-100.0%	13,728	5,650	-58.8%	13,987	-39.1%
Republic Airways (United)	5,733	-	-100.0%	45,655	1,953	-95.7%	12,699	-75.1%
SkyWest (United Express)	21,724	12,554	-42.2%	215,473	112,737	-47.7%	193,309	-34.0%
Trans States	-	-	0.0%	-	-	0.0%	0	0.0%
Charters	45	-	-100.0%	935	255	-72.7%	655	-53.5%
West Coast Charters	-	0	0.0%	-	0	0.0%	0	0.0%
TOTAL ENPLANED PASSENGERS	1,098,626	491,647	-55.2%	10,121,817	4,702,736	-53.5%	7,975,162	-39.6%
DEPLANED PASSENGERS								
AeroMexico	3,654	-	-100.0%	38,796	11,393	-70.6%	22,952	-54.2%
ALASKA AIR	12,954	1	-100.0%	129,548	41,585	-67.9%	67,176	-60.2%
Horizon Air / Alaska	2,158	1,598	-25.9%	2,509	6,818	171.7%	12,243	388.0%
Skywest / Alaska	12,023	7,630	-36.5%	114,613	65,636	-42.7%	107,999	-29.8%
AMERICAN	42,851	26,918	-37.2%	493,298	257,133	-47.9%	404,481	-35.5%
Compass	1,974	-	-100.0%	18,165	6,494	-64.2%	13,797	-41.4%
Envoy Air (American)	-	278	100.0%	-	722	100.0%	722	916.9%
Mesa Air	1,801	-	-100.0%	5,257	-	-100.0%	142	-97.3%
Republic	-	583	100.0%	-	583	100.0%	583	100.0%
SkyWest (American)	6,933	6,004	-13.4%	67,551	39,017	-42.2%	58,964	-39.7%
DELTA	598,018	275,118	-54.0%	5,400,073	2,528,935	-53.2%	4,404,739	-37.1%
SkyWest (Delta Connection)	174,984	96,082	-45.1%	1,533,709	824,592	-46.2%	1,361,008	-33.3%
Compass (Delta Connection)	18,235	-	-100.0%	341,997	-	-100.0%	31,933	-93.0%
FRONTIER	22,183	13,426	-39.5%	178,554	100,251	-43.9%	167,138	-32.3%
JETBLUE	26,290	3,090	-88.2%	285,530	101,821	-64.3%	195,371	-46.7%
KLM ROYAL DUTCH AIRLINES	5,707	-	-100.0%	30,965	-	-100.0%	4,485	-87.4%
SOUTHWEST	105,391	40,344	-61.7%	1,000,721	487,441	-51.3%	774,249	-40.8%
UNITED	14,584	6,510	-55.4%	185,129	101,975	-44.9%	139,286	-45.6%
GoJet Airlines	3,396	-	-100.0%	14,786	-	-100.0%	1,109	-92.8%
Express Jet	-	-	0.0%	3,640	582	-84.0%	2,792	-24.1%
Mesa Airlines / United Express	3,746	-	-100.0%	13,245	5,597	-57.7%	13,774	-38.6%
Republic Airways (United)	6,159	-	-100.0%	47,373	2,037	-95.7%	13,115	-75.0%
SkyWest (United Express)	20,866	12,715	-39.1%	209,934	111,732	-46.8%	193,207	-32.2%
Trans States	-	-	0.0%	-	-	0.0%	0	0.0%
Charters	2	-	-100.0%	962	190	-80.2%	685	-52.2%
West Coast Charters	-	-	0.0%	-	-	0.0%	-	0.0%
TOTAL DEPLANED PASSENGERS	1,083,909	490,297	-54.8%	10,116,355	4,694,534	-53.6%	7,991,950	-39.6%
TOTAL PASSENGERS*	2,182,535	981,944	-55.0%	20,238,172	9,397,270	-53.6%	15,967,112	-39.6%
INTERNATIONAL - ENPLANED								
AEROMEXICO	3,865	-	-100.0%	37,572	11,436	-69.6%	23,549	-52.6%
DELTA	33,670	5,583	-83.4%	325,794	103,792	-68.1%	191,711	-52.9%
SkyWest (Delta Connection)	5,931	-	-100.0%	17,196	5,736	-66.6%	12,575	-44.9%
Compass	-	-	0.0%	31,459	-	-100.0%	10,157	-71.7%
KLM ROYAL DUTCH AIRLINES	3,260	-	-100.0%	17,889	-	-100.0%	2,393	-88.1%
Charters	-	-	0.0%	-	82	100.0%	82	100.0%
TOTAL ENPLANED INTERNATIONAL	46,726	5,583	-88.1%	429,910	121,046	-71.8%	240,467	-55.1%
DEPLANED INTERNATIONAL								
AEROMEXICO	3,654	-	-100.0%	38,796	11,393	-70.6%	22,952	-54.2%
DELTA	32,332	5,463	-83.1%	325,792	115,851	-64.4%	201,555	-50.4%
SkyWest (Delta Connection)	5,919	-	-100.0%	16,997	9,289	-45.3%	20,572	-8.2%
Compass	-	-	0.0%	30,920	-	-100.0%	10,019	-71.8%
KLM ROYAL DUTCH AIRLINES	5,707	-	-100.0%	30,965	-	-100.0%	4,485	-87.4%
Charters	-	-	0.0%	-	-	0.0%	-	0.0%
TOTAL DEPLANED INTERNATIONAL	47,612	5,463	-88.5%	443,470	136,533	-69.2%	259,583	-52.8%
TOTAL INTERNATIONAL PASSENGERS	94,338	11,046	-88.3%	873,380	257,579	-70.5%	500,050	-53.9%

*Includes International

**SALT LAKE CITY INTERNATIONAL AIRPORT
NINE MONTHS ENDED SEPTEMBER 2020
Based on Total Enplanements**

MARKET SHARE

	September 2019	MARKET SHARE	September 2020	MARKET SHARE	YTD 2019	MARKET SHARE	YTD 2020	MARKET SHARE	12 MO ROLLING Ending 09/2019	12 MO ROLLING Ending 09/2020	MARKET SHARE
AEROMEXICO	3,865	0.35%	-	0.00%	37,572	0.37%	11,436	0.24%	49,632	23,549	0.30%
ALASKA	27,155	2.47%	8,674	1.77%	253,181	2.50%	111,797	2.38%	332,071	185,053	2.32%
AMERICAN	55,441	5.05%	33,262	6.77%	565,294	5.58%	307,952	6.55%	727,640	475,345	5.96%
DELTA	797,027	72.55%	373,206	76.01%	7,292,969	72.05%	3,348,971	71.22%	9,500,845	5,772,940	72.39%
FRONTIER	22,457	2.04%	13,128	2.67%	179,224	1.77%	98,191	2.09%	247,753	164,183	2.06%
JETBLUE	29,623	2.70%	3,369	0.69%	288,462	2.85%	100,373	2.13%	366,961	193,025	2.42%
KLM ROYAL DUTCH	3,260	0.30%	-	0.00%	17,889	0.18%	-	0.00%	20,086	2,393	0.03%
SOUTHWEST	108,549	9.88%	40,594	8.27%	1,006,419	9.94%	495,949	10.55%	1,313,639	787,777	9.88%
UNITED	51,204	4.66%	18,785	3.83%	479,872	4.74%	227,183	4.83%	640,199	369,613	4.63%
Charters	45	0.00%	-	0.00%	935	0.01%	255	0.01%	1,410	655	0.01%
TOTAL ENPLANEMENTS	1,098,626	100%	491,018	100%	10,121,817	100%	4,702,107	100%	13,200,236	7,974,533	100%

PERCENT CHANGE YOY

	September 2019	September 2020	PERCENT CHANGE	YTD 2019	YTD 2020	PERCENT CHANGE	12 MO ROLLING Ending 09/2019	12 MO ROLLING Ending 09/2020	PERCENT CHANGE
AEROMEXICO	3,865	-	100.00%	37,572	11,436	100.00%	49,632	23,549	-52.55%
ALASKA	27,155	8,674	-68.06%	253,181	111,797	-55.84%	332,071	185,053	-44.27%
AMERICAN	55,441	33,262	-40.00%	565,294	307,952	-45.52%	727,640	475,345	-34.67%
DELTA	797,027	373,206	-53.18%	7,292,969	3,348,971	-54.08%	9,500,845	5,772,940	-39.24%
FRONTIER	22,457	13,128	-41.54%	179,224	98,191	-45.21%	247,753	164,183	-33.73%
JETBLUE	29,623	3,369	-88.63%	288,462	100,373	-65.20%	366,961	193,025	-47.40%
KLM ROYAL DUTCH	3,260	-	0.00%	17,889	-	0.00%	20,086	2,393	-88.09%
SOUTHWEST	108,549	40,594	-62.60%	1,006,419	495,949	-50.72%	1,313,639	787,777	-40.03%
UNITED	51,204	18,785	-63.31%	479,872	227,183	-52.66%	640,199	369,613	-42.27%
Charters	45	-	-100.00%	935	255	-72.73%	1,410	655	-53.55%
TOTAL ENPLANEMENTS	1,098,626	491,018	-55.3%	10,121,817	4,702,107	-53.5%	13,200,236	7,974,533	-39.6%

**SALT LAKE CITY INTERNATIONAL AIRPORT
LANDING ACTIVITY
NINE MONTHS ENDED SEPTEMBER 2020**

	September 2019	September 2020	CHANGE	YTD 2019	YTD 2020	CHANGE	12 MO ROLLING Ending 09/2020	% CHANGE
TOTAL NUMBER OF LANDINGS								
SCHEDULED CARRIERS								
AEROMEXICO	30	-	-100.0%	272	109	-59.9%	201	-44.8%
ALASKA	90	-	-100.0%	985	394	-60.0%	593	-53.9%
Horizon Air / Alaska	30	30	0.0%	35	138	294.3%	217	520.0%
Skywest / Alaska	180	151	-16.1%	1,680	1,407	-16.3%	2,059	-10.3%
AMERICAN	321	201	-37.4%	3,385	2,118	-37.4%	3,134	-28.8%
Compass	29	-	-100.0%	262	102	-61.1%	209	-41.0%
American/Mesa Air	24	-	-100.0%	83	-	-100.0%	2	-97.6%
Envoy Air (American)	-	5	100.0%	-	14	100.0%	15	1400.0%
Republic/ (American)	-	9	100.0%	-	9	100.0%	9	100.0%
SkyWest (American)	110	103	-6.4%	1,049	791	-24.6%	1,121	-28.9%
DELTA	4,163	3,531	-15.2%	37,157	27,186	-26.8%	40,405	-16.7%
SkyWest (Delta Connection)	3,089	2,929	-5.2%	27,430	22,925	-16.4%	32,442	-11.4%
Compass (Delta Connection)	272	-	-100.0%	5,126	1	-100.0%	489	-92.8%
FRONTIER	129	92	-28.7%	1,078	748	-30.6%	1,156	-22.6%
JETBLUE	217	43	-80.2%	2,109	1,025	-51.4%	1,729	-36.9%
KLM ROYAL DUTCH AIRLINES	13	-	-100.0%	75	-	-100.0%	11	-87.2%
SOUTHWEST	889	447	-49.7%	8,251	5,569	-32.5%	7,959	-26.8%
UNITED	120	56	-53.3%	1,432	901	-37.1%	1,204	-38.9%
GoJet	49	-	-100.0%	224	-	-100.0%	83	-64.5%
Express Jet	-	-	0.0%	55	10	-81.8%	50	-10.7%
Mesa / United Express	53	-	-100.0%	192	98	-49.0%	213	-35.5%
Republic Airways Holdings	84	-	-100.0%	701	32	-95.4%	198	-74.6%
SkyWest (United Express)	354	222	-37.3%	3,291	2,250	-31.6%	3,542	-21.3%
Trans States	-	-	0.0%	-	-	0.0%	-	0.0%
SUBTOTAL SCHEDULED CARRIERS:	10,246	7,819	-23.7%	94,872	65,827	-30.6%	97,041	-22.6%
CHARTER CARRIERS								
ALLEGiant AIR	-	-	0.0%	8	-	-100.0%	1	-91.7%
BOMBARDIER BUSINESS JETS	22	27	22.7%	339	395	16.5%	490	23.4%
BOUTIQUE AIR	-	-	0.0%	-	-	0.0%	-	0.0%
DELTA PRIVATE JETS	-	-	0.0%	-	-	0.0%	-	0.0%
EXECUTIVE JET MANAGEMENT	-	-	0.0%	-	-	0.0%	-	0.0%
FLIGHT OPTIONS	-	-	0.0%	-	-	0.0%	-	0.0%
KALITTA CHARTERS	8	4	-50.0%	53	47	-11.3%	63	5.0%
KEYLIME AIR	-	-	0.0%	8	2	-75.0%	8	-27.3%
NETJETS	89	123	38.2%	1,173	1,108	-5.5%	1,453	-0.6%
SUNSET AVIATION	-	-	0.0%	-	-	0.0%	-	0.0%
SWIFT AIR	-	-	0.0%	-	-	0.0%	-	0.0%
VIRGIN AMERICA	-	-	0.0%	-	-	0.0%	-	0.0%
XOJET	13	26	100.0%	117	169	44.4%	201	47.8%
OTHER CHARTER	1	-	-100.0%	5	5	0.0%	6	0.0%
SUBTOTAL CHARTER CARRIERS:	133	180	35.3%	1,703	1,726	1.4%	2,222	6.6%
CARGO CARRIERS								
ABX AIR	0	-	0.0%	1	-	-100.0%	0	-100.0%
AERO CHARTER & TRANSPORT	-	-	0.0%	-	-	0.0%	-	0.0%
AIR TRANSPORT INTERNATIONAL	-	-	0.0%	-	-	0.0%	-	0.0%
ALPINE AVIATION	187	175	-6.4%	1,626	1,576	-3.1%	2,137	-0.8%
AMERIFLIGHT	129	101	-21.7%	1,332	1,090	-18.2%	1,616	-13.5%
CORPORATE AIR (BILLINGS)	117	-	-100.0%	1,140	1,008	-11.6%	1,413	-7.6%
EMPIRE	15	-	-100.0%	154	137	-11.0%	172	-16.5%
FEDERAL EXPRESS	129	152	17.8%	1,269	1,376	8.4%	1,848	4.8%
GEM AIR	48	50	4.2%	469	472	0.6%	668	-6.7%
SOUTHERN AIR	19	-	-100.0%	270	137	-49.3%	201	-50.2%
UPS	111	174	56.8%	1,052	1,410	34.0%	1,888	30.8%
WESTERN AIR EXPRESS	4	23	475.0%	53	192	262.3%	202	137.6%
OTHER CARGO	(4)	-	-100.0%	22	17	-22.7%	19	-51.3%
SUBTOTAL CARGO CARRIERS:	755	675	-10.6%	7,388	7,415	0.4%	10,164	-0.4%
TOTAL LANDINGS	11,134	8,674	-22.1%	103,963	74,968	-27.9%	109,427	-20.5%
TOTAL LANDED WEIGHT								
SCHEDULED CARRIERS								
AEROMEXICO	2,850,000	-	-100.0%	25,840,000	10,355,000	-59.9%	19,095,000	-44.8%
ALASKA	13,696,800	-	-100.0%	146,602,696	60,052,080	-59.0%	89,960,922	-53.1%
Horizon Air / Alaska	2,248,710	2,248,710	0.0%	2,623,495	10,344,066	294.3%	16,265,669	520.0%
Skywest / Alaska	13,492,260	11,318,507	-16.1%	125,927,760	105,464,499	-16.3%	154,336,463	-10.3%
AMERICAN	46,852,316	31,058,692	-33.7%	495,015,472	313,783,474	-36.6%	462,735,656	-28.3%
Compass	2,173,550	-	-100.0%	19,636,900	7,644,900	-61.1%	15,664,550	-41.0%
Envoy Air (American)	-	374,750	100.0%	-	1,049,300	100.0%	1,124,250	1400.0%
American/Mesa Air	1,781,600	-	-100.0%	6,158,100	-	-100.0%	148,600	-97.6%
Republic (American)	-	674,550	100.0%	-	674,550	100.0%	674,550	100.0%
SkyWest (American)	7,370,000	6,901,000	-6.4%	70,283,000	52,997,000	-24.6%	75,107,000	-28.9%
DELTA	635,657,606	537,493,702	-15.4%	5,737,280,161	4,207,050,144	-26.7%	6,249,322,238	-16.5%
SkyWest (Delta Connection)	198,856,566	202,501,917	1.8%	1,744,229,061	1,533,805,787	-12.1%	2,149,732,935	-7.4%

**SALT LAKE CITY INTERNATIONAL AIRPORT
LANDING ACTIVITY
NINE MONTHS ENDED SEPTEMBER 2020**

	September 2019	September 2020	CHANGE	YTD 2019	YTD 2020	CHANGE	12 MO ROLLING Ending 09/2020	% CHANGE
Compass (Delta Connection)	20,448,144	-	-100.0%	385,357,302	75,177	-100.0%	36,761,553	-92.8%
FRONTIER	19,735,466	13,111,536	-33.6%	159,881,578	105,950,394	-33.7%	166,974,680	-25.0%
JETBLUE	30,857,400	6,114,600	-80.2%	299,899,800	145,755,000	-51.4%	245,863,800	-36.9%
KLM ROYAL DUTCH AIRLINES	5,523,414	-	-100.0%	32,010,505	-	-100.0%	4,673,658	-87.3%
SOUTHWEST	114,944,000	60,224,000	-47.6%	1,079,238,400	732,928,000	-32.1%	1,044,704,000	-26.5%
UNITED	17,051,620	7,684,960	-54.9%	201,367,000	128,434,760	-36.2%	171,627,280	-38.4%
GoJet	3,283,000	-	-100.0%	15,008,000	-	-100.0%	5,561,000	-64.5%
Express Jet	-	-	0.0%	4,103,100	750,000	-81.7%	3,750,000	-9.6%
Mesa / United Express	3,975,000	-	-100.0%	14,400,000	7,350,000	-49.0%	15,975,000	-35.5%
Republic Airways Holdings	6,151,500	-	-100.0%	51,220,299	2,318,986	-95.5%	14,484,123	-74.6%
SkyWest (United Express)	23,626,174	16,066,260	-32.0%	229,260,894	156,892,168	-31.6%	246,617,683	-21.4%
Trans States	-	-	0.0%	-	-	0.0%	-	0.0%
SUBTOTAL SCHEDULED CARRIERS:	1,170,575,126	895,773,184	-23.5%	10,845,343,523	7,583,675,285	-30.1%	11,191,160,610	-21.6%
CHARTER CARRIERS								
ALLEGiant AIR	-	-	0.0%	1,075,848	-	-100.0%	142,198	-91.2%
BOMBARDIER	752,645	873,503	16.1%	11,430,978	13,355,892	16.8%	16,685,687	24.4%
BOUTIQUE AIR	-	-	0.0%	-	-	0.0%	-	0.0%
DELTA PRIVATE JETS	-	-	0.0%	-	-	0.0%	-	0.0%
EXECUTIVE JET MANAGEMENT	-	-	0.0%	-	-	0.0%	-	0.0%
FLIGHT OPTIONS	-	-	0.0%	-	-	0.0%	-	0.0%
KALITTA CHARTERS	265,100	73,220	-72.4%	1,129,920	893,740	-20.9%	1,356,640	1.4%
KEYLIME AIR	-	-	0.0%	247,862	63,448	-74.4%	253,792	-26.0%
MIAMI AIR	146,300	-	-100.0%	585,200	438,900	-25.0%	585,200	-20.0%
NETJETS	2,637,372	3,623,358	37.4%	35,140,410	33,778,657	-3.9%	44,251,279	1.3%
SIERRA PACIFIC	-	-	0.0%	110,000	220,000	100.0%	220,000	100.0%
SUN COUNTRY	-	-	0.0%	-	-	0.0%	-	0.0%
SWIFT AIR	-	-	0.0%	-	-	0.0%	-	0.0%
VIRGIN AMERICA	-	-	0.0%	-	-	0.0%	-	0.0%
XOJET	431,000	706,250	63.9%	3,819,750	6,222,300	62.9%	7,355,350	65.5%
OTHER CHARTER	-	-	0.0%	-	-	0.0%	-	0.0%
SUBTOTAL CHARTER CARRIERS:	4,232,417	5,276,331	24.7%	53,539,968	54,972,937	2.7%	70,850,146	7.9%
CARGO CARRIERS								
ABX AIR INC	-	-	0.0%	283,000	-	-100.0%	0	-100.0%
AERO CHARTER & TRANSPORT	-	-	0.0%	-	-	0.0%	-	0.0%
AIR TRANSPORT INTERNATIONAL	-	-	0.0%	-	-	0.0%	-	0.0%
ALPINE AVIATION	2,561,500	2,453,500	-4.2%	22,866,200	22,050,800	-3.6%	29,944,100	-1.3%
AMERIFLIGHT	1,925,480	1,360,500	-29.3%	19,221,510	15,871,950	-17.4%	23,453,030	-14.0%
AMERISTAR	-	-	0.0%	121,500	299,700	146.7%	299,700	146.7%
ATLAS AIR	-	-	0.0%	4,486,000	3,621,000	-19.3%	4,165,000	-56.4%
CORPORATE AIR (BILLINGS)	994,500	-	-100.0%	9,690,000	8,568,000	-11.6%	12,010,500	-7.6%
EMPIRE	542,325	-	-100.0%	5,769,388	4,953,235	-14.1%	6,447,833	-18.1%
FEDEX EXPRESS	44,309,900	49,808,700	12.4%	438,885,100	457,557,500	4.3%	622,911,800	2.7%
GEM AIR	408,000	425,000	4.2%	3,973,000	3,973,000	0.0%	5,619,500	-5.6%
KALITTA AIR	-	-	0.0%	1,304,000	-	-100.0%	-	-100.0%
SOUTHERN AIR INC	2,322,192	-	-100.0%	33,116,446	16,634,980	-49.8%	24,425,364	-50.7%
UPS	33,902,280	50,107,200	47.8%	315,951,940	395,217,560	25.1%	549,947,820	23.5%
WESTERN AIR EXPRESS	52,000	299,000	475.0%	689,000	2,496,000	262.3%	2,626,000	137.6%
OTHER CARGO	-	-	0.0%	-	-	0.0%	(380,000)	100.0%
SUBTOTAL CARGO CARRIERS:	87,018,177	104,453,900	20.0%	856,357,084	931,243,725	8.7%	1,281,470,647	7.0%
TOTAL LANDED WEIGHT	1,261,825,720	1,005,503,415	-20.3%	11,755,240,575	8,569,891,947	-27.1%	12,543,861,403	-19.2%

**SALT LAKE CITY INTERNATIONAL AIRPORT
CARGO ACTIVITY REPORT
NINE MONTHS ENDED SEPTEMBER 2020**

	September 2019	September 2020	CHANGE	YTD 2019	YTD 2020	CHANGE	12 MO ROLLING Ending 09/2020	% CHANGE
ENPLANED CARGO								
PASSENGER CARRIERS								
ALASKA	21,069	-	-100.00%	205,233	77,072	-62.45%	138,226	-43.87%
Horizon Air / Alaska	277	4,756	1616.97%	277	12,232	4315.88%	13,292	4698.56%
Skywest / Alaska	1,974	21,184	973.15%	11,111	105,311	847.81%	112,441	911.98%
AMERICAN	26,251	3,690	-85.94%	267,810	94,499	-64.71%	192,830	-41.78%
American Eagle/Republic	-	-	0.00%	-	-	0.00%	-	0.00%
Compass	-	-	0.00%	30	120	300.00%	434	1346.67%
Envoy Air (American)	-	-	0.00%	-	-	0.00%	-	0.00%
Mesa	-	-	0.00%	-	-	0.00%	-	0.00%
SkyWest (American)	1,321	487	-63.13%	5,387	402,828	7377.78%	406,211	7440.58%
DELTA	425,997	239,502	-43.78%	5,717,998	3,467,124	-39.36%	5,351,086	-35.66%
KLM ROYAL DUTCH	178,703	-	-100.00%	905,872	-	-100.00%	135,365	-87.54%
SOUTHWEST	283,576	180,455	-36.36%	2,909,493	1,669,064	-42.63%	2,538,307	-35.11%
UNITED	6,074	2,697	-55.60%	45,233	44,340	-1.97%	77,372	-6.56%
Others	-	-	0.00%	1,100	21,579	1861.73%	60,819	5429.00%
CARGO CARRIERS								
FEDEX EXPRESS*	7,994,195	10,277,351	28.56%	78,136,543	86,970,535	11.31%	115,720,471	9.85%
GEM AIR	67,650	92,898	37.32%	559,733	683,780	22.16%	858,699	9.83%
SOUTHERN AIR	29,325	-	-100.00%	1,615,892	251,000	-84.47%	297,738	-89.70%
UPS	4,396,563	6,216,512	41.39%	44,305,381	48,197,495	8.78%	66,158,786	10.23%
MISC CARGO	883,990	729,382	-17.49%	8,907,976	8,716,782	-2.15%	11,803,234	-15.35%
ABX AIR	-	-	0.00%	-	-	0.00%	-	-100.00%
TOTAL ENPLANED CARGO	14,316,965	17,768,914	24.11%	143,595,069	150,713,761	4.96%	203,865,311	3.50%
DEPLANED CARGO								
PASSENGER CARRIERS								
ALASKA	19,293	-	-100.00%	242,061	40,808	-83.14%	82,394	-72.82%
Horizon Air / Alaska	39	4,943	12574.36%	890	19,855	2130.90%	24,795	2685.96%
Skywest / Alaska	2,543	21,665	751.95%	32,230	83,146	157.98%	101,570	215.14%
AMERICAN	17,486	24,770	41.66%	213,479	197,990	-7.26%	261,383	-14.98%
American Eagle/Republic	-	-	0.00%	-	-	0.00%	-	0.00%
Compass	5	-	-100.00%	286	187	-34.62%	337	17.83%
Envoy Air (American)	-	-	0.00%	-	-	0.00%	-	0.00%
SkyWest (American)	340	1,833	439.12%	3,931	7,253	84.51%	8,788	27.05%
DELTA	612,473	360,403	-41.16%	8,066,262	4,726,508	-41.40%	7,342,862	-39.98%
KLM ROYAL DUTCH	141,135	-	-100.00%	1,030,651	-	-100.00%	222,888	-81.84%
SOUTHWEST	382,816	304,650	-20.42%	3,766,085	2,392,709	-36.47%	3,615,557	-27.54%
UNITED	27,962	10,576	-62.18%	315,497	97,940	-68.96%	208,814	-52.89%
Others	2,723	5,406	98.53%	28,079	105,422	275.45%	181,290	521.09%
CARGO CARRIERS								
FEDEX EXPRESS*	7,430,774	8,860,114	19.24%	73,911,868	74,902,506	1.34%	100,564,391	-1.31%
GEM AIR	25,893	25,071	-3.17%	222,766	195,747	-12.13%	234,851	-17.13%
SOUTHERN AIR	126,150	-	-100.00%	2,251,917	1,688,688	-25.01%	2,329,304	-41.12%
UPS	6,153,044	8,072,195	31.19%	55,971,194	63,610,536	13.65%	87,352,728	15.25%
MISC CARGO	337,410	186,297	-44.79%	3,419,810	3,547,836	3.74%	4,876,229	-28.49%
ABX AIR	-	-	0.00%	5,745	-	-100.00%	-	-100.00%
AERO CHARTER & TRANSPORT	-	-	0.00%	-	-	0.00%	-	0.00%
AIR TRANSPORT INTERNATIONAL	-	-	0.00%	-	-	0.00%	-	0.00%
AIRNET SYSTEMS	-	-	0.00%	-	-	0.00%	-	0.00%
ALPINE AVIATION	105,523	141,519	34.11%	835,075	934,666	11.93%	1,248,703	9.89%
AMERIFLIGHT	62,954	36,921	-41.35%	601,943	419,523	-30.31%	645,534	-23.57%
AMERIFLIGHT, INC.	-	-	0.00%	-	-	0.00%	-	0.00%
AMERISTAR	-	-	0.00%	265	-	-100.00%	-	-100.00%
ATLAS AIR	-	-	0.00%	646,829	790,851	22.27%	983,667	-68.09%
CORPORATE AIR (BILLINGS)	83,938	-	-100.00%	652,865	608,183	-6.84%	860,808	0.86%
EMPIRE	84,995	-	-100.00%	676,948	764,930	13.00%	1,099,013	29.20%
KITTY HAWK INTERNATIONAL INC	-	-	0.00%	-	-	0.00%	-	0.00%
NATIONAL AIRLINES	-	-	0.00%	-	-	0.00%	-	0.00%
OTHERS	-	-	0.00%	-	-	0.00%	-	0.00%
WESTERN AIR EXPRESS	-	7,857	100.00%	140	29,683	21102.14%	38,504	2384.13%
TOTAL DEPLANED CARGO	15,280,086	17,877,923	17.00%	149,477,006	151,617,131	1.43%	207,408,181	-0.44%
TOTAL CARGO	29,597,051	35,646,837	20.44%	293,072,075	302,330,892	3.16%	411,273,492	1.47%

*FEDEX EXPRESS includes mail



Salt Lake City
Department of Airports

COMPARISON OF ON TIME OPERATIONS
July 2020

ARRIVALS

Airport	Flights	% On Time	Rank
MDW CHICAGO MIDWAY	5,595	94.5	1
LAX LOS ANGELES INTL	8,792	94.1	2
LAS LAS VEGAS MCCARRAN INTL	8,828	93.8	3
PHX PHOENIX SKY HARBOR INTL	8,623	93.7	4
SAN SAN DIEGO LINDBERGH FIELD	4,175	93.6	5
SFO SAN FRANCISCO INTL	6,354	93.4	6
SEA SEATTLE-TACOMA INTL	10,221	93.2	7
PDX PORTLAND INTL	3,562	92.8	8
BWI BALTIMORE/WASHINGTON INTL	6,594	92.3	9
MSP MINNEAPOLIS-ST. PAUL INTL	6,943	92.3	10
ORD CHICAGO O HARE	16,300	91.5	11
DTW DETROIT METRO WAYNE CNTY	8,090	91.2	12
MIA MIAMI INTL	4,788	91.2	13
TPA TAMPA INTL	4,025	91.0	14
ATL HARTSFIELD-JACKSON ATLANTA INTL	18,257	90.6	15
HNL HONOLULU	2,481	90.6	16
DEN DENVER INTL	15,378	90.5	17
DCA RONALD REAGAN NATIONAL	4,873	90.1	18
BOS BOSTON LOGAN INTL	5,347	90.0	19
LGA NEW YORK LAGUARDIA	4,197	90.0	20
CLT CHARLOTTE DOUGLAS	13,467	89.6	21
FLL FT. LAUDERDALE	4,731	89.6	22
MCO ORLANDO INTL	7,520	89.5	23
SLC SALT LAKE CITY INTL	7,360	89.1	24
PHL PHILADELPHIA INTL	7,478	89.0	25
EWR NEWARK LIBERTY INTERNATIONAL	5,005	88.8	26
IAD WASHINGTON DULLES	3,847	88.0	27
IAH HOUSTON GEORGE BUSH	6,648	87.6	28
JFK NEW YORK JFK INTL	3,343	87.0	29
DFW DALLAS-FT. WORTH REGIONAL	18,763	86.1	30
AVERAGES	7,720	90.8	

DEPARTURES

Airport	Flights	% On Time	Rank
SAN SAN DIEGO LINDBERGH FIELD	4,135	94.6	1
PDX PORTLAND INTERNATIONAL	2,573	94.3	2
LAX LOS ANGELES INTL	8,701	94.0	3
PHX PHOENIX SKY HARBOR INTL	8,547	94.0	4
MSP MINNEAPOLIS-ST. PAUL INTL	6,959	93.5	5
SFO SAN FRANCISCO INTL	6,146	93.3	6
TPA TAMPA INTERNATIONAL	4,015	93.1	7
SEA SEATTLE-TACOMA INTL	7,482	92.9	8
MIA MIAMI INTL	4,774	92.7	9
LAS LAS VEGAS MCCARRAN INTL	8,767	92.6	10
BOS BOSTON LOGAN INTERNATIONAL	5,341	92.5	11
DTW DETROIT METRO WAYNE CNTY	8,099	92.5	12
LGA NEW YORK LAGUARDIA	4,190	92.2	13
IAH HOUSTON GEORGE BUSH	6,686	92.1	14
MDW CHICAGO MIDWAY	5,602	91.9	15
DCA RONALD REAGAN NATIONAL	4,763	91.6	16
DEN DENVER INTERNATIONAL	15,418	91.6	17
ORD CHICAGO O HARE	14,675	91.3	18
PHL PHILADELPHIA INTL	6,121	91.0	19
ATL HARTSFIELD-JACKSON ATLANTA INTL	18,326	90.9	20
BWI BALTIMORE/WASHINGTON INTL	6,593	90.6	21
FLL FT. LAUDERDALE	4,741	90.4	22
HNL HONOLULU	2,269	89.9	23
CLT CHARLOTTE DOUGLAS	12,492	89.6	24
DFW DALLAS-FT. WORTH REGIONAL	18,785	89.5	25
SLC SALT LAKE CITY INTL	7,366	89.5	26
EWR NEWARK LIBERTY INTERNATIONAL	5,010	89.1	27
MCO ORLANDO INTL	7,513	88.4	28
JFK NEW YORK JFK INTL	3,348	88.2	29
IAD WASHINGTON DULLES	2,959	87.7	30
AVERAGES	7,413	91.5	

ON TIME ARRIVAL PERFORMANCE AT SLC
By Carrier

Air Carrier	Flights	% On Time
WN SOUTHWEST	687	93.2%
UA UNITED	275	91.3%
B6 JETBLUE	114	90.4%
DL DELTA	5,706	88.7%
F9 FRONTIER	88	88.6%
AA AMERICAN	286	88.1%
AS ALASKA	204	84.8%
	7,360	89.1%

Source: DOT Air Travel Consumer Report

DESIGN AND CONSTRUCTION REPORT

TABLE OF CONTENTS

- I. Area Map of Project Locations
- II. Project Schedule
- III. Construction Analysis
- IV. Design and Construction Report

SALT LAKE CITY DEPARTMENT OF AIRPORTS

November 12, 2020



Salt Lake City
International Airport

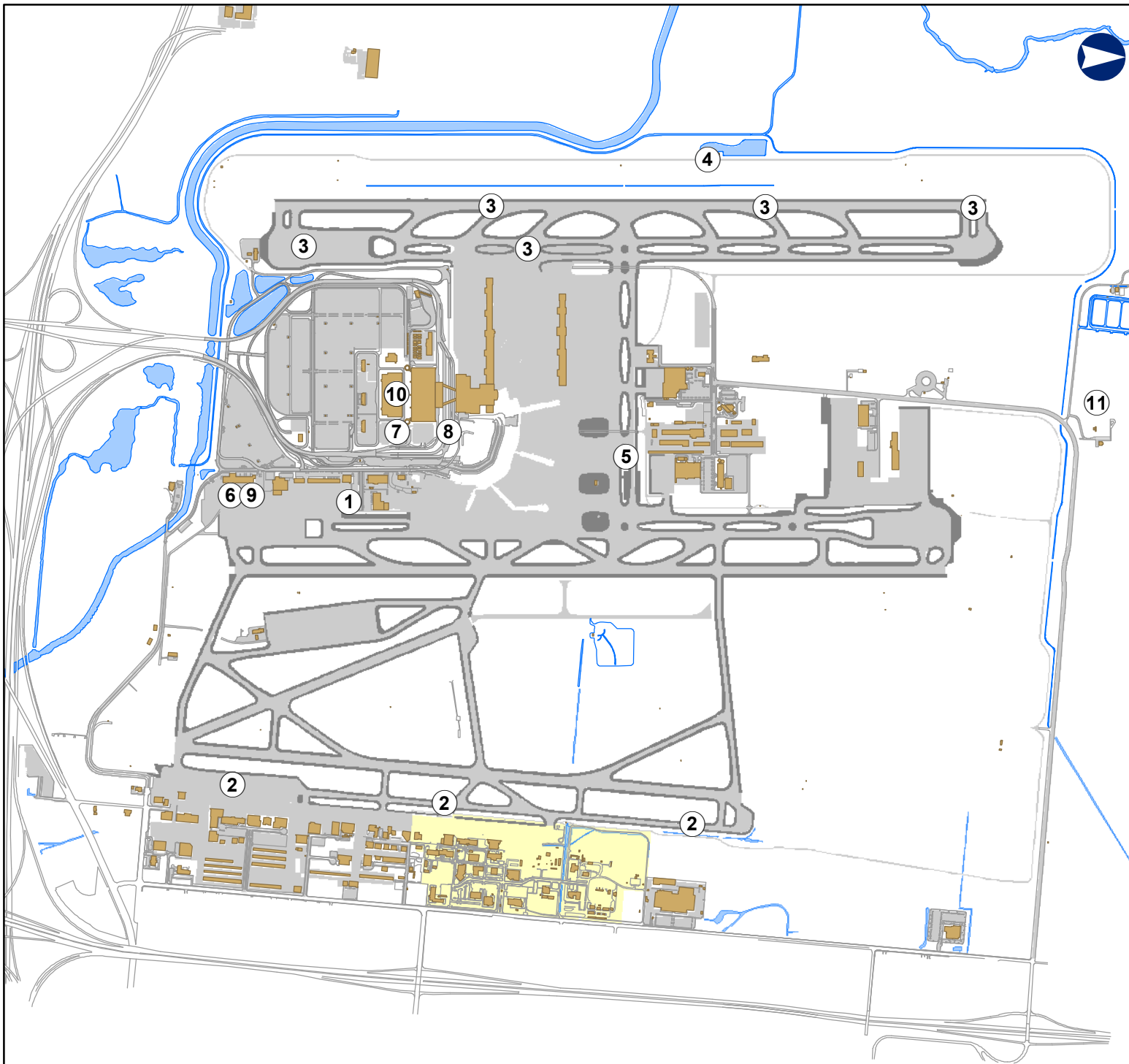
2020 - 2021 Project Legend

Airfield






1. Central Screening Warehouse
2. Taxiway K Pavement Rehabilitation
3. Airfield Lighting Wiring Phase 4
4. Pump House No. 1 Reconstruction
5. Taxiway E Reconstruction
6. Relocate Gate 10 and 11






Landside

7. Parking Lot E (South)
8. Parking Lot E Pedestrian Canopy
9. Airport Operations Center Canopy
10. QTA Deck Coating
11. Glycol Plant & Wildlife Services Office Bldg.



SALT LAKE CITY INTERNATIONAL AIRPORT
CONSTRUCTION PROGRAM
2020/2021 Construction Schedule

ID	Task Name	Start	Finish	November 21		December 11			January 1			January 21		
				11/29	12/6	12/13	12/20	12/27	1/3	1/10	1/17	1/24	1/31	
1	Project Title	Mon 7/22/19	Thu 4/29/21											
2	(1) Central Screening Warehouse	Fri 9/20/19	Mon 11/30/20											
3	(2) Taxiway K Pavement Rehabilitation	Mon 7/22/19	Sat 10/31/20											
4	(3) Airfield Lighting Wiring Phase 4	Fri 5/1/20	Fri 10/16/20											
5	(4) Pump House No. 1 Reconstruction	Wed 2/5/20	Sat 11/14/20											
6	(5) Taxiway E Reconstruction	Mon 5/4/20	Mon 11/30/20											
7	(6) Relocate Gate 10 & 11	Tue 5/26/20	Fri 11/6/20											
8	(7) Parking Lot E (South)	Mon 4/6/20	Fri 11/6/20											
9	(8) Parking Lot E Pedestrian Canopy	Fri 6/12/20	Tue 12/1/20											
10	(9) Airport Operations Center Canopy	Fri 6/12/20	Fri 11/20/20											
11	(10) Quick Turn Around (QTA) Deck Coating	Thu 10/1/20	Fri 12/4/20											
12	(11) Glycol Plant & Wildlife Services Office Bldg.	Thu 9/17/20	Thu 4/29/21											

Project: Microsoft Project - 3-13-2 Date: Thu 11/12/20	DESIGN		Inactive Milestone		Manual Summary	
	CONSTRUCTION		Inactive Summary		Start-only	
	SCOPING		Manual Task		Finish-only	
	SUMMARY		Duration-only		Deadline	
	Inactive Task		Manual Summary Rollup			

**SALT LAKE CITY DEPARTMENT OF AIRPORTS
CONSTRUCTION PROJECT STATUS 2020 - 2021**

#	PROJECT NAME	ENGINEER'S ESTIMATE	BID AMOUNT	APPROVED CHANGE ORDERS TO DATE	% OF COST INCREASE TO DATE	STATUS	CONTRACTOR
CONSTRUCTION							
1	Central Screening Warehouse	\$ 4,771,730	\$ 4,237,990	\$ 602,867	14.23%	complete	Paulsen Construction
2	Taxiway K Pavement Rehabilitation	\$ 5,587,395	\$ 4,769,400	\$ 437,602	9.18%	complete	Staker Parson Companies
3	Airfield Lighting Wiring Phase 4	\$ 2,597,232	\$ 2,198,198			complete	Royal Electric Company
4	Pump House No. 1 Reconstruction	\$ 1,331,479	\$ 1,980,000	\$ 4,325	0.22%	on schedule	Pine Tree Construction
5	Taxiway E Reconstruction	\$ 6,554,905	\$ 6,811,270	\$ 15,765	0.23%	on schedule	Ames Construction
6	Relocate Gate 10 & 11	\$ 3,034,523	\$ 3,573,858	\$ 56,634	1.58%	complete	Staker Parson Companies
7	Parking Lot E (South)	\$ 1,504,910	\$ 1,430,585	\$ 29,795	2.08%	on schedule	Staker Parson Companies
8	Parking Lot E Pedestrian Canopy	\$ 1,054,886	\$ 1,304,933	\$ 26,798	2.05%	on schedule	Crescent Construction
9	Airport Operations Canopy	\$ 681,000	\$ 626,628	\$ 106,650	17.02%	on schedule	Crescent Construction
10	Quick Turn Around (QTA) Deck Coating	\$ 1,500,000	\$ 1,080,628	\$ 15,456	1.43%	on schedule	Paulsen Construction
11	Glycol Plant & Wildlife Services Office Bldg.	\$ 3,106,683	\$ 3,335,000			on schedule	Cal Wadsworth Construction
	Total	\$ 31,724,743	\$ 31,348,490	\$ 1,295,892	4.13%		
Budget amount, Engineer's estimate, and Bid amount is based on construction cost only.							

DESIGN AND CONSTRUCTION REPORT

CONSTRUCTION

- (1) **Central Screening Warehouse** - The Contractor has finished up minor punch list items for the Central Screening Warehouse. Construction has been completed for the building tenant, Bradford Logistics. Close-out documents are currently being prepared.
- (2) **Taxiway K Pavement Rehabilitation** - Substantial completion for this project was issued on October 31, 2020. The Contractor is currently working on punch list items.
- (3) **Airfield Lighting Wiring Phase 4** - The Contractor was issued substantial completion on October 16, 2020. All punch list items have been completed and close-out documents are currently being prepared.
- (4) **Pump House No. 1 Reconstruction** - The new pumps have been installed. Testing of pumps has started. Installation of electrical gear will be delayed due to supply chain issues at the manufacturing plant.
- (5) **Taxiway E Reconstruction** - Paving for this project has been completed. The Contractor is currently finishing up lighting and wiring work. Substantial completion is anticipated for the end of November 2020.
- (6) **Relocate Gate 10 & 11** - Substantial completion for this project was issued on November 6, 2020. The Contractor is currently working on punch list items.
- (7) **Parking Lot E (South)** - The curb and gutter and sidewalk have been completed. The remaining work to be done includes installation of the gate arm and card reader for the emergency gate, covers for the light pole bases, and replacing the catch basin grates.
- (8) **Parking Lot E Pedestrian Canopy** - Final painting and roofing is currently taking place. The Contractor is completing lighting and wiring work. A final walk through will take place in late November 2020.
- (9) **Airport Operations Center Canopy** - The Contractor has completed all of the concrete footings for the canopy structure. All steel fabrication has been completed and erected including the metal roof decking. Painting of the structure has started and is approximately 60% completed. Roofing material installation will begin this week.
- (10) **Quick Turn Around (QTA) Deck Coating** - The Contractor has completed the deck coating work. The structural repair work on the underside of the deck will be delayed a few weeks due to Covid-19 issues.
- (11) **Glycol Plant and Wildlife Services Office Building** - The Contractor has completed the foundation and footing work and the floor slabs have been poured. Rough-in utility work is on-going. Submittal review and approval for the project is continuing.



Advisory Board
Meeting

November 18, 2020

Media Clippings

<https://slcairport.com/assets/pdfDocuments/AABoard/10Nov2020ClippingPacket.pdf>

Compiled by the Communication & Marketing Dept.