



Advisory Board  
Meeting

January 19, 2022

Agenda



## Advisory Board Meeting

January 19, 2022

**This meeting will be an electronic meeting pursuant to the attached written statement from Board Chair Steve Price.**  
To access the meeting please visit:

<https://saltlakecity.webex.com/saltlakecity/onstage/g.php?MTID=e4c6bb415d866a165e62a314dba4dbc70>



I, J. Steven Price, Chair of The Salt Lake City Airport Advisory Board, hereby determine that conducting public meetings at an anchor location presents a substantial risk to the health and safety of those who may be present at the anchor location. The decision to meet electronically without an anchor location follows a local increase in COVID-19 cases in the City and elsewhere and will be re-evaluated before the next Advisory Board meeting. The change in meeting attendance is a precautionary measure for the safety of the public and City employees based on the latest reports from the Centers for Disease Control and the Salt Lake County Health Department. The Advisory Board will return with hybrid or in-person meetings when appropriate.

Dated this 17 day of January 2022.

A handwritten signature in blue ink, appearing to read "J. Steven Price", is written over a horizontal line.

J. Steven Price

Chair, Salt Lake City Airport Advisory Board



## **ADVISORY BOARD MEETING AGENDA**

19 January 2022

8:00 A.M.

### CONSENT

- A. Minutes of the 17 November 2021 Meeting

### DISCUSSION

- A. Director's Report – Bill Wyatt, Executive Director, SLCDA
- B. Airport Redevelopment Program (ARP) Update – Mike Williams, ARP Director, SLCDA
- C. Winter Operations – Treber Andersen, Director of Operations and Dusty Bills, Assistant Maintenance Director, SLCDA
- D. Election of Board Chair and Vice-Chair

### INFORMATION ITEMS

Financial Report – November 2022  
Air Traffic Statistics – November 2022  
Construction Report – January 2022

### MEDIA CLIPPINGS

Media Clippings – January 2022

The next meeting will be held on **Wednesday, February 16, 2022**, at 8:00 a.m. Meetings are usually held in the Board Room unless otherwise posted. People with disabilities may make requests for reasonable accommodations no later than 48 hours in advance in order to attend this Airport Advisory Board Meeting. Accommodations may include alternate formats, interpreters, and other auxiliary aids. This is an accessible facility. For questions or additional information, please contact Tina Nee at 801-575-2042.



Advisory Board  
Meeting

January 19, 2022

Minutes

# SALT LAKE CITY DEPARTMENT OF AIRPORTS MINUTES OF ADVISORY BOARD MEETING

November 17, 2021

Members Present: Steve Price, Chair  
Cyndy Miller\*  
Larry Pinnock\*  
Theresa Foxley\*  
Arlyn Bradshaw\*  
Roger Boyer\*  
Dirk Burton

Mayor's Office: Rachel Otto\*

Department of Airports: Bill Wyatt, Executive Director  
Tina Nee, Administration  
Kevin Robins, Director of Engineering\*  
Treber Anderson, Acting Director of Operations  
Ed Cherry, Director of IT \*  
Ed Clayson, Director of Maintenance  
Shane Andreasen, Director Admin and Commercial Services  
Medardo Gomez, ORAT Director  
Brady Fredrickson, Director of Planning and Environmental  
Pete Higgins, Chief Operations Officer  
Mike Williams, ARP Program Director  
Stefhan Bennett, SLC Police Captain\*  
Rick Stratton, SLCFD Battalion Chief\*  
Nancy Volmer, Communication and Marketing Director  
Catherine Brabson, City Attorney\*  
Megan DePaulis, City Attorney\*  
Nate Lavin, Communication and Marketing  
Elenor Gomberg, Communication and Marketing

Other: Andrew Scanlon, Kimley-Horn  
Paul Coates, City of West Jordan  
Brian Bangerter, HNTB  
Andy C  
Shawn Milne, Tooele County  
David Chipman  
Jurphy Murphy  
Jeremy Harris, KUTV  
Jim Lohse, FFKR

Steve Price called the meeting, held in-person at the SLCD Admin Offices Board Room and via Web-Ex to order at 8:07 a.m. (\* indicates the party attended virtually)

## AGENDA

### **A. Minutes**

A motion was made by Mayor Dirk Burton and seconded by Cyndy Miller to approve the minutes of October 20, 2021 as presented. All votes were affirmative; motion passed.

### **B. Director's Report**

Bill Wyatt, Executive Director, updated the Airport Advisory Board regarding current events.

Bill Wyatt provided a brief update on passenger volumes and mobility, financial position, air service development, and construction.

Larry Pinnock asked for continued updates to the board regarding customer complaints and other issues.

Bill Wyatt indicated if board members receive requests/ complaints they can't answer to, to please email for help. A report will be provided at the next meeting.

Larry Pinnock asked for an update on the central tunnel and how that is being communicated to passengers.

Bill Wyatt explained the newsletter, "Volmer Vision", news reports and advertising processes.

Mayor Dirk Burton asked if bike racks were added to the UTA platform.

The team indicated that they were and took Mayor Burton to see them after the meeting.

Steve Price asked how many employees are at the airport.

Bill Wyatt indicated there are about 17,000 badge employees with a projection of 20,000 by 2024.

### **C. Airport Redevelopment Program (ARP) Update – Mike Williams, ARP Director, SLCDA**

Mike Williams, Airport Redevelopment Program (ARP) Director, presented an update on the ARP (presentation on file). Main points included were:

- Project statistics
- Safety and Schedule Stats, and Cost Summary
- Project statistics
- CGMP #5 – Terminal/South Concourse West/Gateway status
- CGMP #6 – Roadways/Parking Garage/Central Utility Plant status
- CGMP #7 – Baggage Handling System status
- CGMP #9A – SCW Apron Paving and Hydrant Fueling status

- CGMP #16 – NCP Phase 1
- CGMP #17 – NCP Baggage Handling System Phases 1 & 2 status
- CGMP #18 – NCP Apron Paving/ Hydrant Fueling
- Tracking Budget
- Job progress photos

Mayor Dirk Burton asked for the numbers were for local vs. out of state contractors; merit shops vs. out of state unions.

Mike Williams indicated he would send the information to the board after the meeting.

#### **D. Preliminary Budget Briefing – Brian Butler, Finance Director**

Brian Butler, Finance Director, presented a Preliminary Budget Briefing (presentation on file). Main points included were:

- FY2023 Budget Goals and Objectives – Budget Drivers
- FY2023 Budget Key Dates
- What Drives the Budget? – Enplanements, Landed Weights, Airline Use Agreement, and the Plan of Finance

Cyndy Miller recommended a Finance Subcommittee Meeting in February.

Mayor Dirk Burton asked if landing weight is more of a benefit to the airlines.

Brian Butler explained the total cost of airfield expenses, regardless of actual weight.

#### **E. Concessions Program Update – Shane Andreasen, Director of Administration and Commercial Services**

Shane Andreasen, Director of Administration and Commercial Services provided an update to the Concessions Program (presentation on file). Main points included were:

- Performance
- Open and Operating
- Under Construction and Design Review/ Permitting
- Phase II Request for Proposals

There were no questions for Shane Andreasen.

Bill Wyatt provided a brief update to the Unruly Passenger situation.

Tye Hoffman asked why fines could not be given when they disembark.

Bill Wyatt explained how an individual needed to press charges for fines to be incurred.



Therese Foxley added the Wall Street Journal provided an excellent article and felt SLCDA is providing a good stance to the situation.

**F. Nominations of Board Chair and Vice-Chair**

Steve Price opened the floor for nominations for Chair.

Cyndy Miller nominated Steve Price as Airport Advisory Board Chair for 2022. A motion was made by Larry Pinnock and seconded by Mayor Dirk Burton that nominations for Board Chair be closed. All votes were affirmative; motion passed.

Steve Price opened the floor for nominations for Vice-Chair.

Cyndy Miller nominated Theresa Foxley as Airport Advisory Board Vice-Chair for 2022. A motion was made by Larry Pinnock and seconded by Roger Boyer that nominations or Board Vice-Chair be closed. All votes were affirmative; motion passed.

Voting by acclamation will be conducted at the January Advisory Board meeting, scheduled for 19 January 2022.

Steve Price adjourned the meeting at 9:33 a.m.

\_\_\_\_\_  
Steve Price, Chair

\_\_\_\_\_  
Date

\_\_\_\_\_  
Erin Mendenhall, Mayor

\_\_\_\_\_  
Date



Advisory Board  
Meeting

January 19, 2022

Discussion Items

**AGENDA:** DISCUSSION ITEM (A)

**DATE:** 19 January 2022

**TO:** Airport Advisory Board

**FROM:** Bill Wyatt, Executive Director

**SUBJECT:** **Executive Director's Report**

---

---

Bill Wyatt will present a monthly informational report to the Board, which may include:

1. ARP progress
2. Ground transportation update
3. Concessions and rental cars
4. Airport safety and security
5. Airport facilities and operations
6. General aviation
7. Passenger and airport users
8. Environmental matters
9. Financial condition
10. Legislative issues
11. Airlines
12. Communications and marketing

**AGENDA:** DISCUSSION ITEM (B)  
**DATE:** 19 January 2022  
**TO:** Airport Advisory Board  
**FROM:** Bill Wyatt, Executive Director  
**SUBJECT:** **Airport Redevelopment Program Update**

---

Mike Williams, Airport Redevelopment Program (ARP) Director, will present an update on the SLC Airport Redevelopment Program (presentation on file).



# AIRPORT REDEVELOPMENT PROGRAM

Status Update 01/19/2022



# Safety and Schedule



## **Safety Statistics**

### **Numbers for the Current Month**

- **OSHA National Average**
  - **Lost Time Rate 1.80 Recordable Rate 3.10**
- **HDJV Metrics**
  - **9,048,320 Total Trade Hours worked**
  - **Lost Time Rate 0.24 Recordable Rate 2.29**

### **Numbers for the Program Overall**

- **ARP Metrics (HDJV+AOJV)**
  - **11,209,354 Total Trade Hours worked**

### **Schedule Status - Critical Path**

- **Continuation of Concourse 'A' East Exterior Curtainwall and Roofing Installation**
- **Continuation of Concourse 'A' East Overhead MEP Installations**
- **Completion of Taxiway 'G' P-501 Concrete Paving**
- **Completion of Central Tunnel Waterproofing and Backfill**
- **Overall Program is on schedule**

# Near Term Schedule Milestones



Target Date	Current Date	Description
01/10/22	01/10/22	Concourse B East Start Apron Paving Demo
01/10/22	01/10/22	Central Tunnel Place Area G2 Bottom Mat Slab
01/14/22	01/14/22	Concourse A East Area B Dry-in
01/17/22	01/17/22	Concourse A East Baggage Installation Area B
01/25/22	01/25/22	Central Tunnel Area G Pour 2,3 Install Steel Columns
01/27/22	01/27/22	Concourse A East Install Area A Level 3 Mechanical Room Equipment
02/28/22	02/28/22	Concourse A East Area C Dry-in
03/02/22	03/02/22	Concourse A East Area A Level 2 Start Drywall
03/14/22	03/14/22	Taxiway G South Punchlist
04/01/22	04/01/22	Concourse A East Start Terrazzo Area A Level 2

# Airport Redevelopment Program Overall Budget



Construction Budget December 2021	Budget 1/13/22 FOC	Committed Nov-21	Commitments Dec-21	*Pending Commitments	Revised Commitments	Earned to Date	Estimate at Completion
Closed TRP CGMPs 1, 2, 2A-2D, 3, 4, 9, 09A, 12	\$394,334,804	\$400,284,798	\$0	(\$5,949,994)	\$394,334,804	\$393,627,123	\$394,334,804
Closed NCP CGMPs 13, 14, 15, 16, 17, 18 & 19	\$487,882,444	\$487,852,444	\$0	\$0	\$487,852,444	\$487,852,444	\$487,882,444
CGMP 2E,F&H CMAR General Conditions/Services	\$107,642,170	\$50,309,279	\$50,100,891	\$0	\$100,410,170	\$18,786,103	\$107,642,170
CGMP 05 Terminal/SCW/Gateway	\$1,042,507,452	\$1,042,670,036	\$0	(\$162,584)	\$1,042,507,452	\$1,042,104,392	\$1,042,507,452
CGMP 06 Parking Garage, Roadways, CUP	\$403,477,666	\$405,856,439	\$0	(\$2,378,773)	\$403,477,666	\$400,954,396	\$403,477,666
CGMP 07 TRP Baggage Handling System	\$96,289,987	\$96,289,987	\$0	\$0	\$96,289,987	\$96,289,987	\$96,289,987
CGMP 10 South Concourse East/Tunnel Shell	\$540,188,144	\$540,188,144	\$0	\$0	\$540,188,144	\$235,865,224	\$540,188,144
CGMP 11, 11A & 11B Apron Paving & Fueling	\$275,423,126	\$203,341,893	\$0	\$0	\$203,341,893	\$92,343,390	\$275,423,126
CGMP 19A Phase 3 NCP/Tunnel Buildout	\$332,870,248	\$58,900,309	\$273,969,939	\$0	\$332,870,248	\$1,929,103	\$332,870,248
CGMP 20 NCP Phase 2 Airfield Paving & Jet Fuel	\$77,645,774	\$77,645,774	\$0	\$0	\$77,645,774	\$231,144	\$77,645,774
<b>Total Program Construction</b>	<b>\$3,758,261,815</b>	<b>\$3,363,339,103</b>	<b>\$324,070,830</b>	<b>(\$8,491,351)</b>	<b>\$3,678,918,582</b>	<b>\$2,769,983,306</b>	<b>\$3,758,261,815</b>
TRP Owner Procurement	\$5,465,472	\$5,335,714	\$0	\$0	\$5,335,714	\$4,808,421	\$5,465,472
NCP Owner Procurement	\$2,655,266	\$2,655,266	\$0	\$0	\$2,655,266	\$1,860,182	\$2,655,266
Security Checkpoint Equipment	\$12,751,472	\$11,751,472	\$0	\$0	\$11,751,472	\$7,848,061	\$12,751,472
Automated Security Exit Door Equipment	\$672,000	\$0	\$0	\$0	\$0	\$0	\$672,000
TRP Soft Cost	\$379,256,065	\$305,375,062	\$1,347,750	\$0	\$306,722,812	\$285,335,921	\$379,256,065
NCP Soft Cost	\$185,593,794	\$128,630,172	\$2,240	\$0	\$128,632,412	\$96,687,038	\$185,593,794
<b>Total Program Soft Cost</b>	<b>\$586,394,069</b>	<b>\$453,747,686</b>	<b>\$1,349,990</b>	<b>\$0</b>	<b>\$455,097,676</b>	<b>\$396,539,623</b>	<b>\$586,394,069</b>
CGMP 2G CMAR Preconstruction Phase 4	\$1,414,757	\$1,414,757	\$0	\$0	\$1,414,757	\$159,869	\$1,414,757
NCP Soft Cost Phase 4	\$15,840,094	\$12,885,438	\$2,954,656	\$0	\$15,840,094	\$854,336	\$15,840,094
<b>Total Phase 4 Planning Cost</b>	<b>\$17,254,851</b>	<b>\$14,300,195</b>	<b>\$2,954,656</b>	<b>\$0</b>	<b>\$17,254,851</b>	<b>\$1,014,205</b>	<b>\$17,254,851</b>
TRP Owner Reserve	\$38,924,662	\$0	\$0	\$0	\$0	\$0	\$38,924,662
NCP Owner Reserve	\$51,137,665	\$0	\$0	\$0	\$0	\$0	\$51,137,665
<b>Total Program Owner Reserve</b>	<b>\$90,062,327</b>	<b>\$0</b>	<b>\$0</b>	<b>\$0</b>	<b>\$0</b>	<b>\$0</b>	<b>\$90,062,327</b>
<b>Total ARP Program Budget</b>	<b>\$4,451,973,062</b>	<b>\$3,831,386,984</b>	<b>\$328,375,476</b>	<b>(\$8,491,351)</b>	<b>\$4,151,271,109</b>	<b>\$3,167,537,134</b>	<b>\$4,451,973,062</b>

\*Pending Commitments for Final/Closeout Revisions to CGMPs 5, 6, 09A & 12 will reduce the CGMPs values/commitments to the 09/02/21 Budget



# Project Statistics Update



**TRP/NCP Trade Staffing**  
**Trade Workers 510 (01/07/2022)**  
**11,209,354 Hours Worked as of 12/31/2021**

## Contract Local/Non-Local Awarded Statistics

<b>Local Trades</b>	<b>Dollar Value</b>	<b>Trade Count</b>	<b>Percentage</b>
<b>Total Local (Wasatch Front) Contractors</b>	<b>\$1,538,140,821</b>	<b>142</b>	<b>66.49%</b>
<b>Total Out of State Contractors</b>	<b>\$775,133,467</b>	<b>36</b>	<b>33.51%</b>
<b>Total Contract Awards</b>	<b>\$2,313,274,288</b>	<b>178</b>	<b>100.00%</b>

## Contract Union/Merit Shop Awarded Statistics

<b>Union Trades</b>	<b>Dollar Value</b>	<b>Trade Count</b>	<b>Percentage</b>
<b>Total Union Contractors</b>	<b>\$771,349,699</b>	<b>43</b>	<b>33.34%</b>
<b>Total Merit Shop Contractors</b>	<b>\$1,541,924,589</b>	<b>135</b>	<b>66.66%</b>
<b>Total Contract Awards</b>	<b>\$2,313,274,288</b>	<b>178</b>	<b>100.00%</b>

# Concourse 'A' East/ Central Tunnel/Airfield



## **Central Tunnel Concrete Structure**

- **Concrete Mat (Bottom) Slab Concrete Placement Continuing**
- **Lid Concrete Placement Continuing**
- **Wall Waterproofing and Protection Board Continuing**
- **Wall Backfill Progressing**

## **Concourse 'A' East**

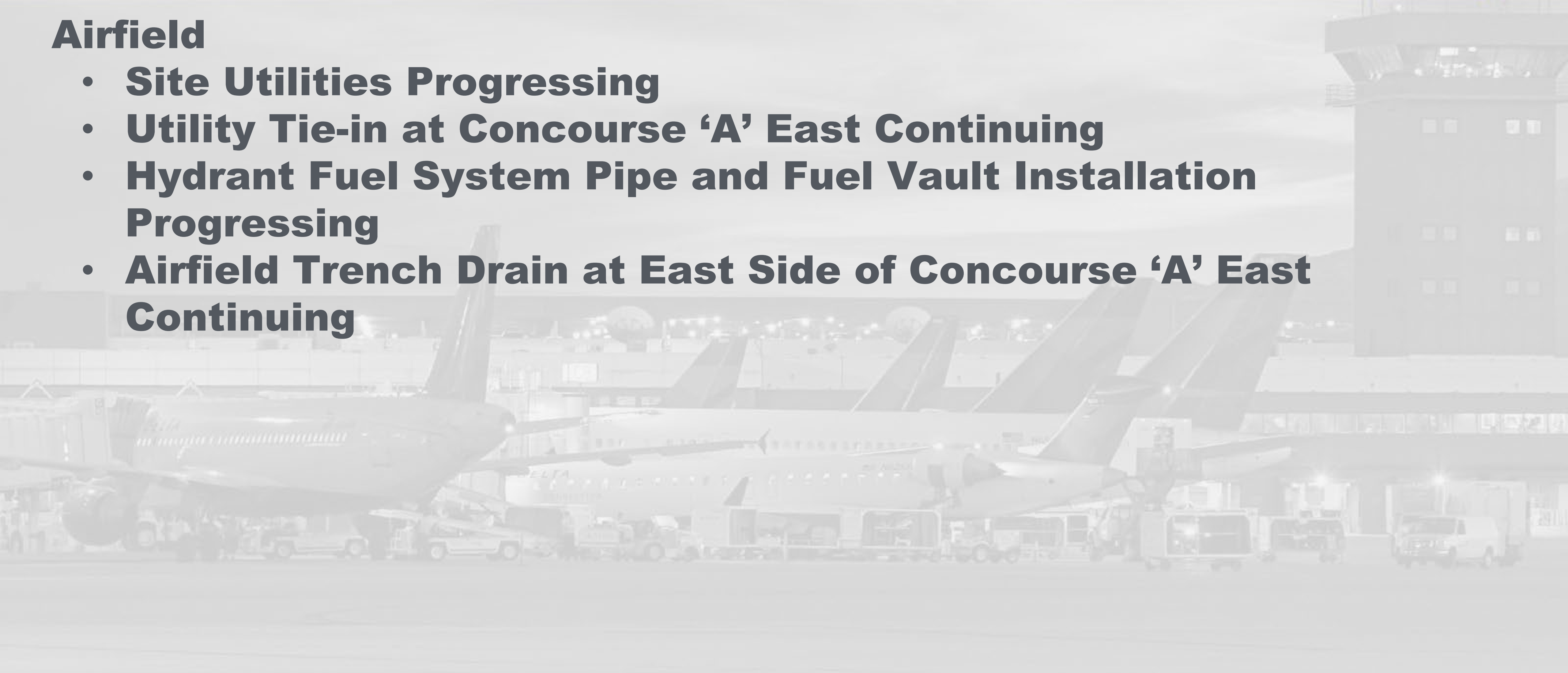
- **Elevated Concrete Slab Placement Complete**
- **Mechanical, Electrical and Plumbing Rough-in Progressing**
- **Baggage Handling System Conveyor Installation Continuing**
- **Spray-on Insulation and Fire Proofing Continuing**
- **Exterior Studs, Sheathing and Vapor Carrier Progressing**
- **Exterior Curtainwall Installation Continuing**

# Concourse 'A' East/ Central Tunnel/Airfield



## **Airfield**

- **Site Utilities Progressing**
- **Utility Tie-in at Concourse 'A' East Continuing**
- **Hydrant Fuel System Pipe and Fuel Vault Installation Progressing**
- **Airfield Trench Drain at East Side of Concourse 'A' East Continuing**



# Concourse 'B' East (Phase 3)



## **Phase 3 (Concourse 'B' East 8 Gate) Procurement**

- **CGMP 20 for Apron Paving and Fueling Approved – CGMP NTE value is \$4 million under the Estimate and the \$4 million has been returned to Owner Reserve**
- **CGMP 19A for Building Trades Approved 12/16/2021- CGMP NTE value is \$14.5 million under the Estimate and the \$14.5 million has been returned to Owner Reserve**

## **Phase 3 (Concourse 'B' East) Construction**

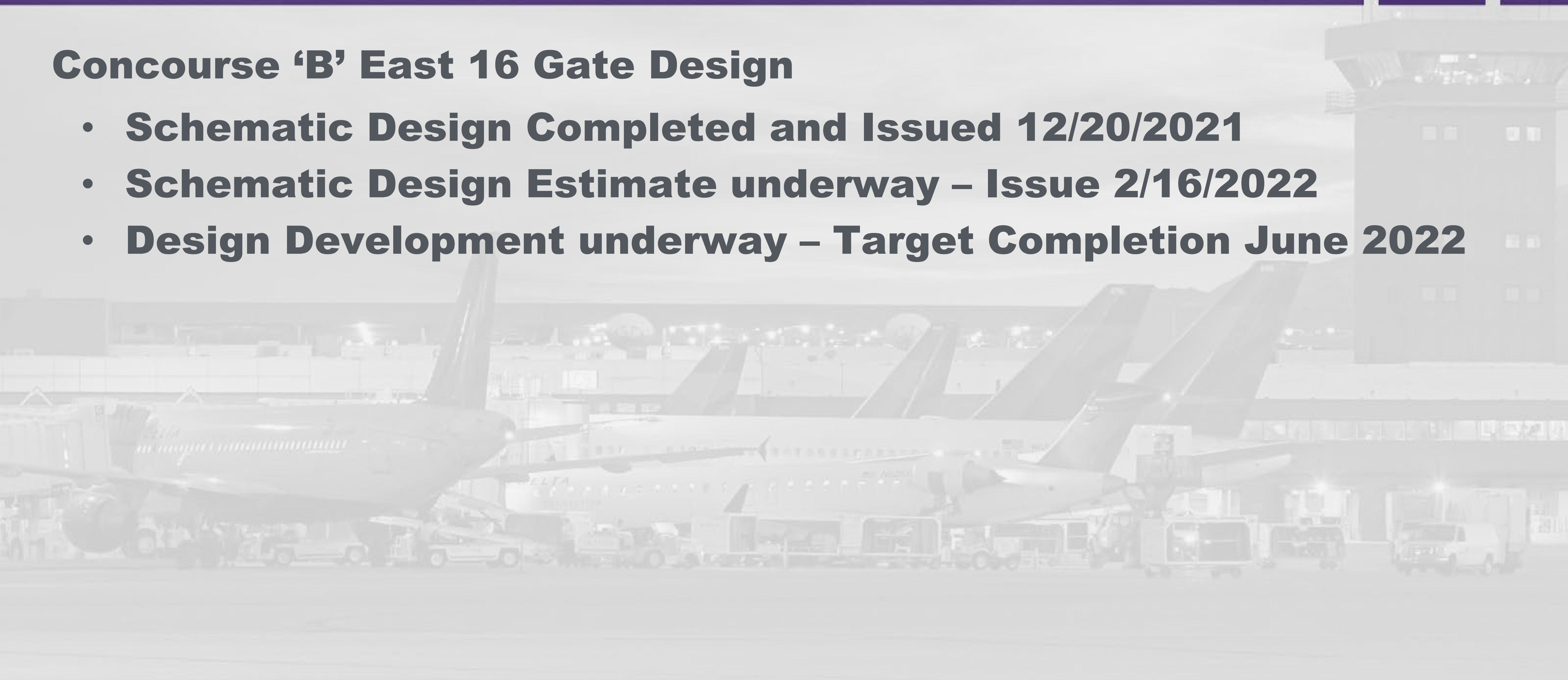
- **Started Apron Pavement Demo 1/10/2022**

# Phase 4 (Concourse 'B' East 16 Gate) Design

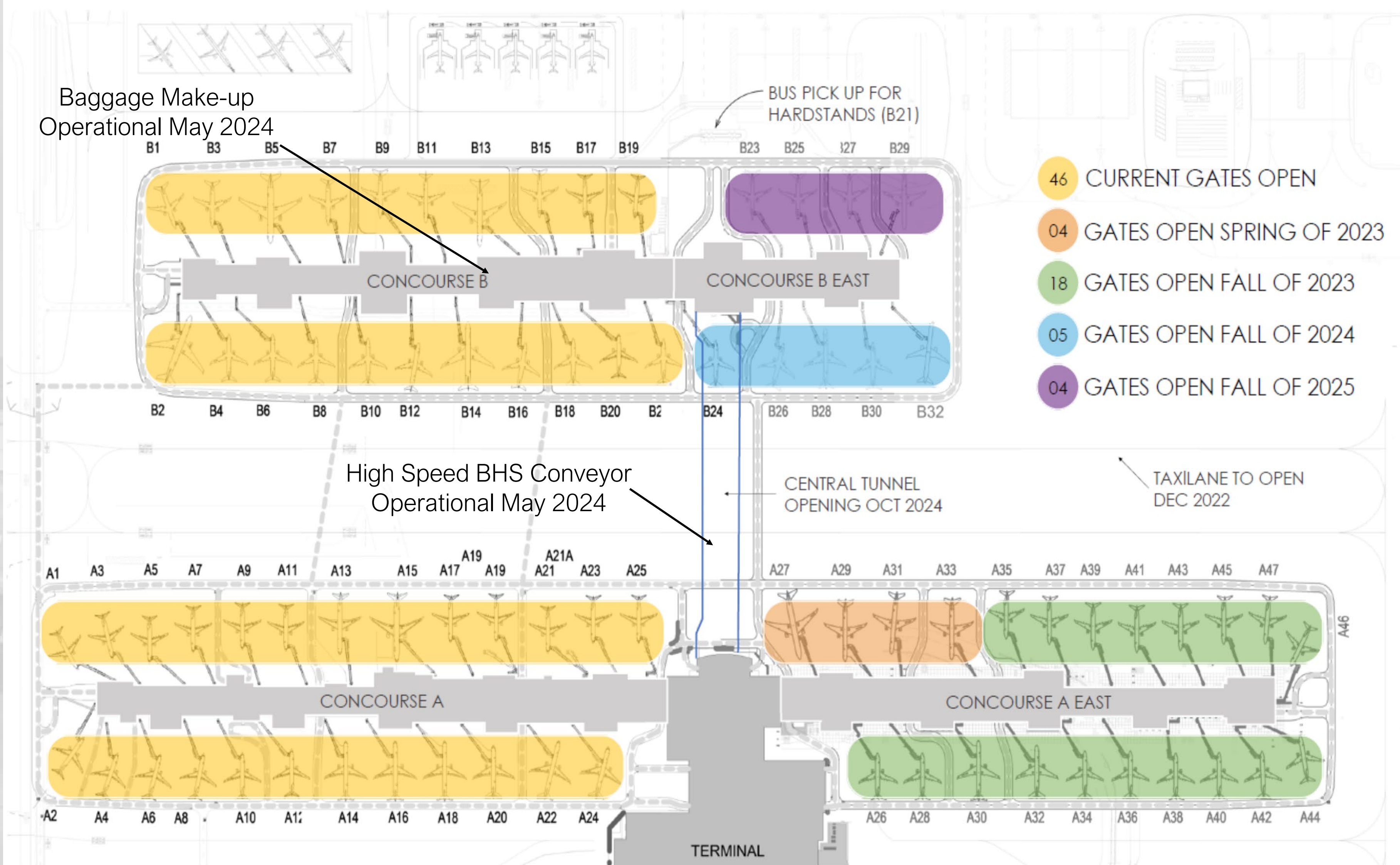


## **Concourse 'B' East 16 Gate Design**

- **Schematic Design Completed and Issued 12/20/2021**
- **Schematic Design Estimate underway – Issue 2/16/2022**
- **Design Development underway – Target Completion June 2022**



# Overall Phase 2 and Phase 3 Phased Delivery

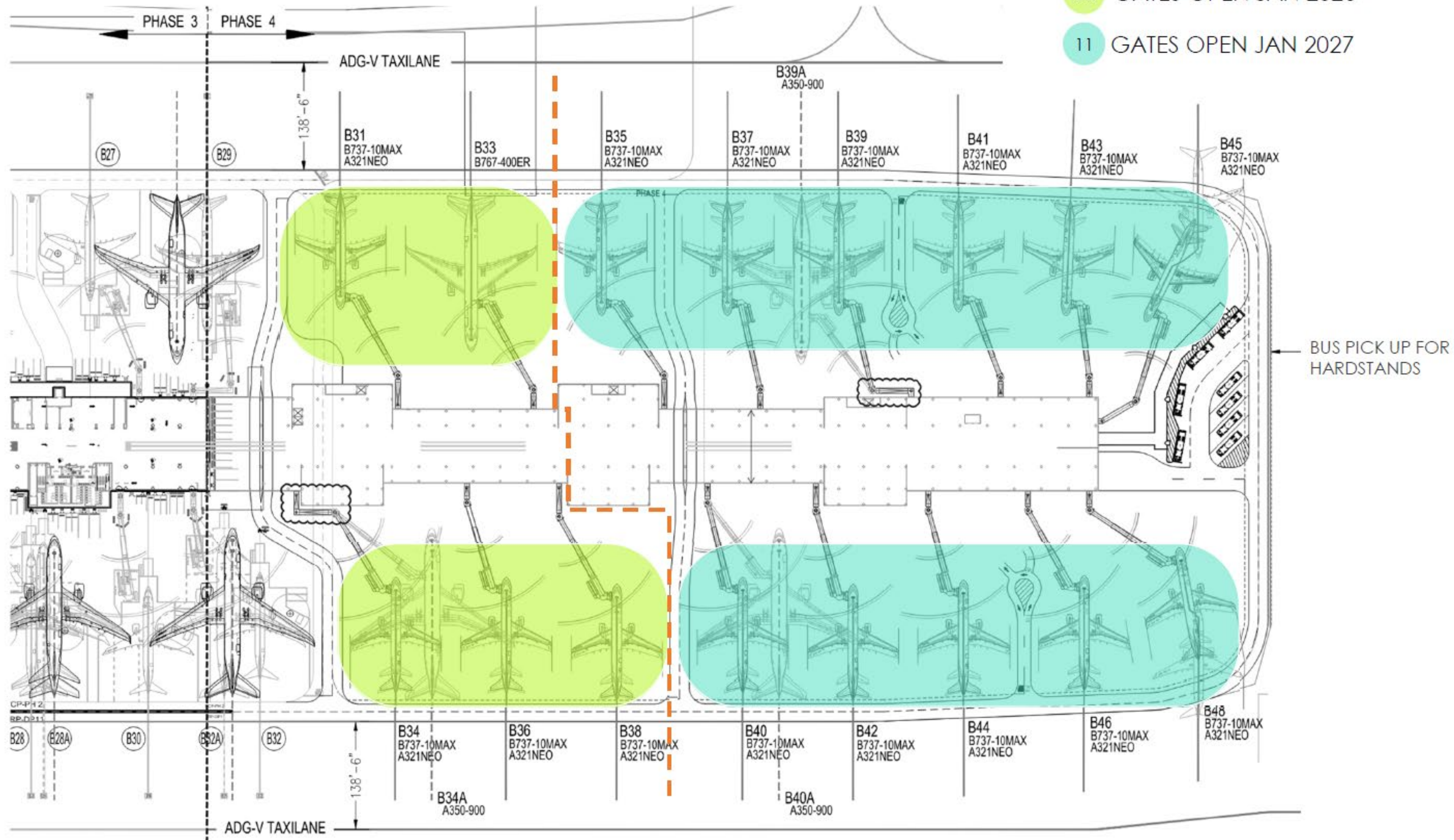


- 46 CURRENT GATES OPEN
- 04 GATES OPEN SPRING OF 2023
- 18 GATES OPEN FALL OF 2023
- 05 GATES OPEN FALL OF 2024
- 04 GATES OPEN FALL OF 2025

# Phase 4 Gate Delivery



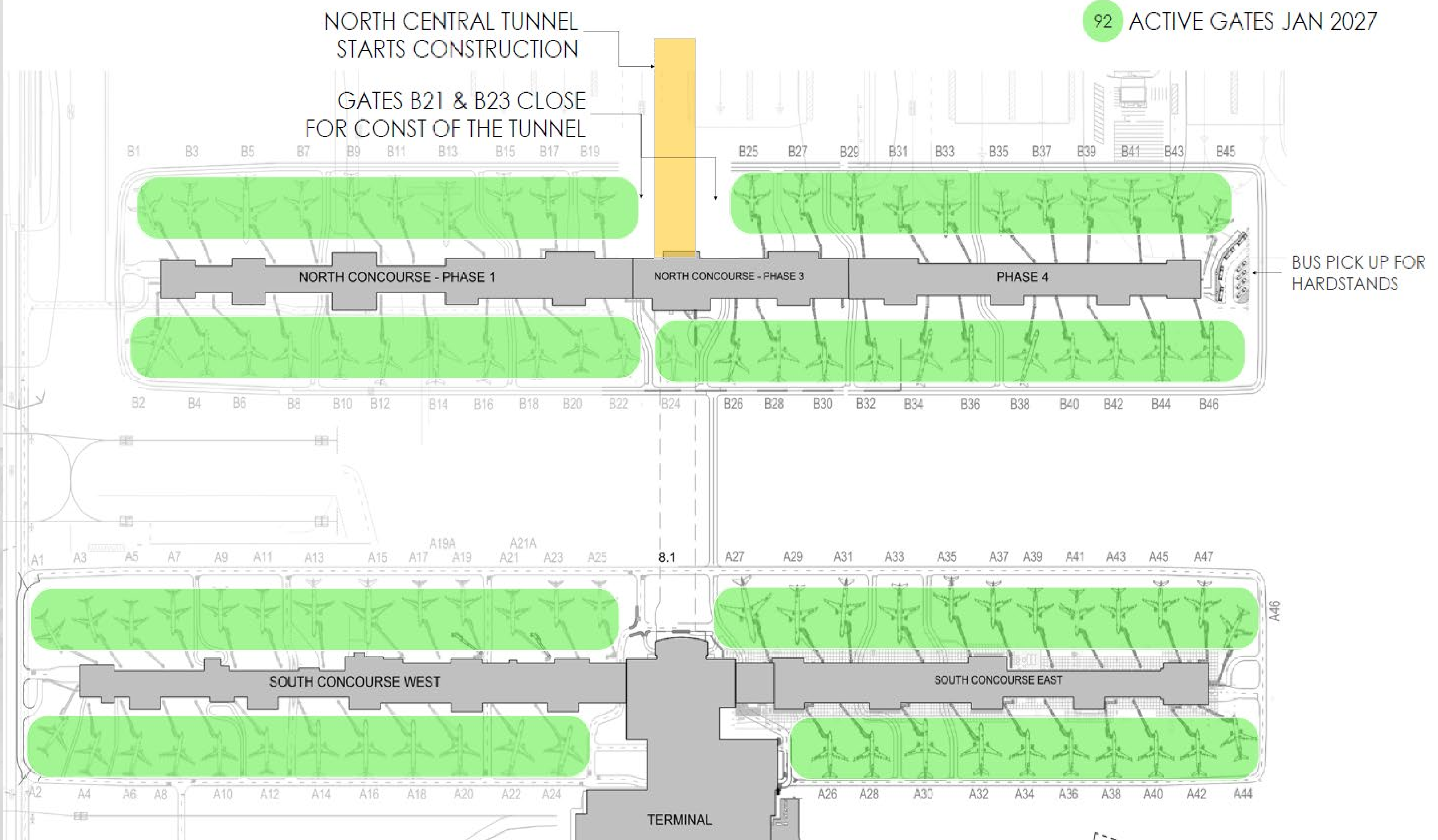
- 05 GATES OPEN JAN 2026
- 11 GATES OPEN JAN 2027



# Phase 2, Phase 3 and Phase 4 Gate Delivery



92 ACTIVE GATES JAN 2027





# East Apron Paving



# Taxilane 2E Looking West



# Concourse 'A' East



**Area B Glazing north**



**Area B Glazing north**

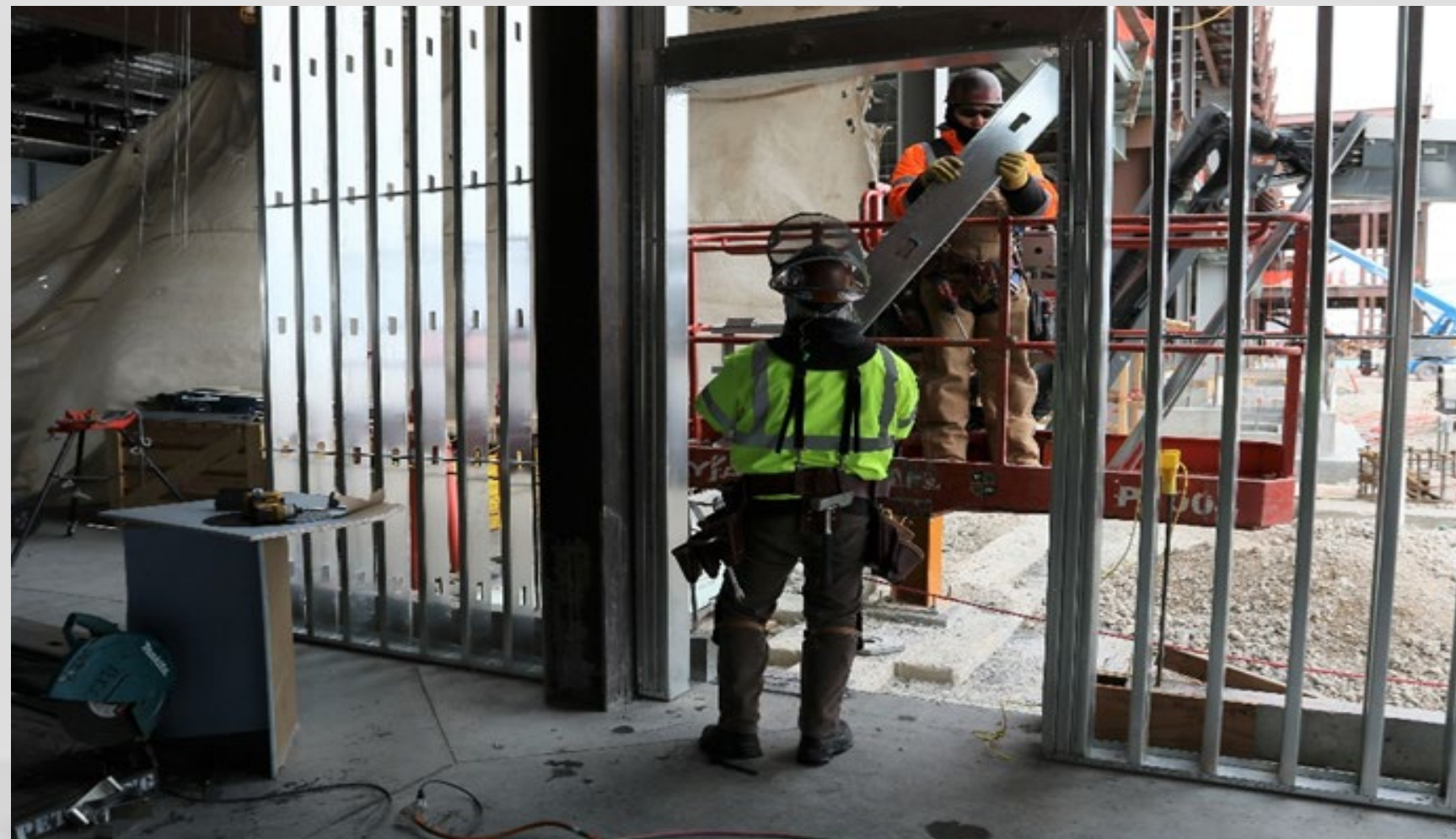


**Area A Metal Panels South**



**Area C Exterior Sheathing**

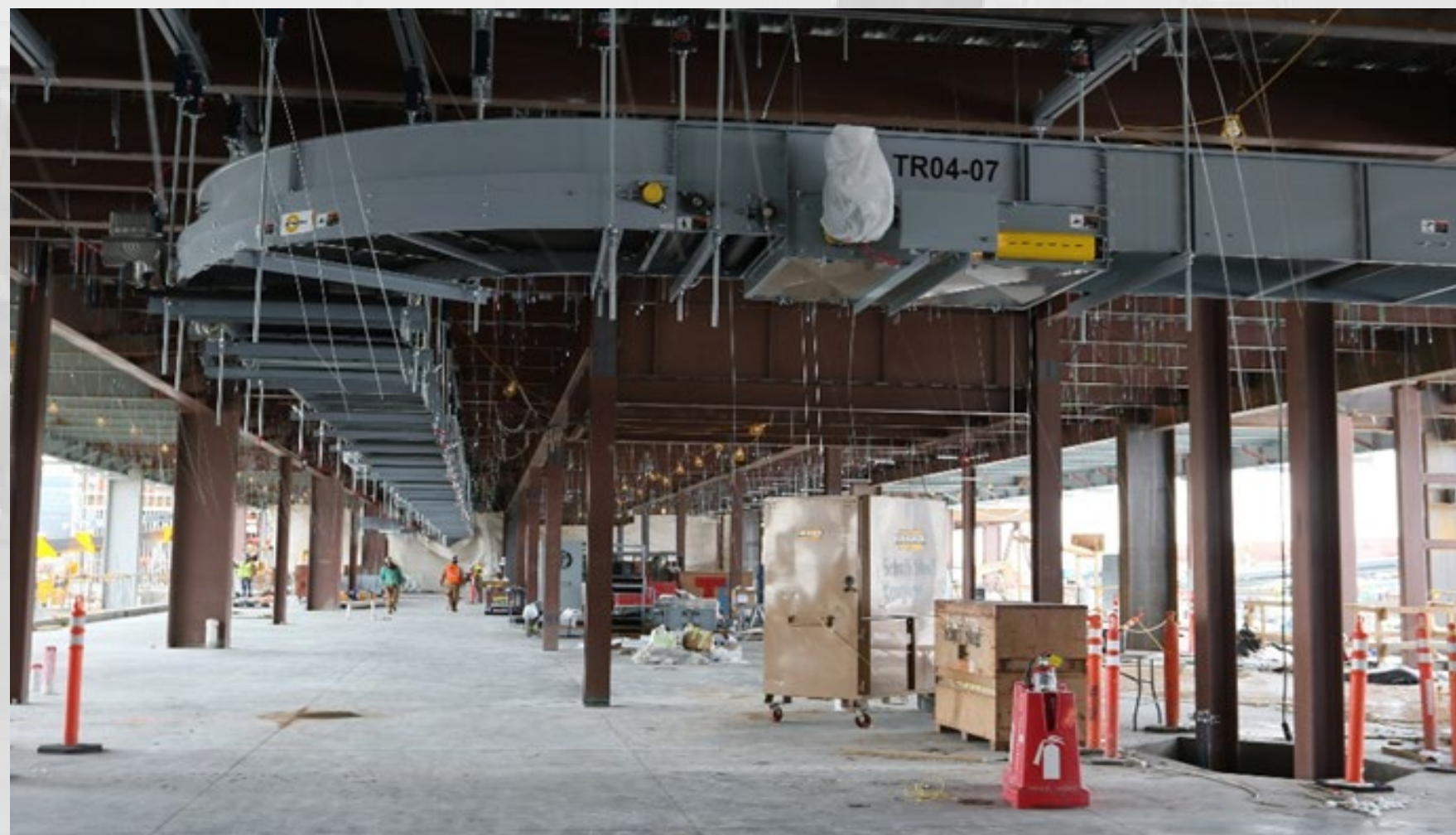
# Concourse 'A' East



**Area C Level 1 Interior Stud Framing**



**Area D Level 1 Spray Insulation**



**Area E Level 1 Baggage Conveyor**



**Area F (End of Building) Egress Stair**

# Central Tunnel



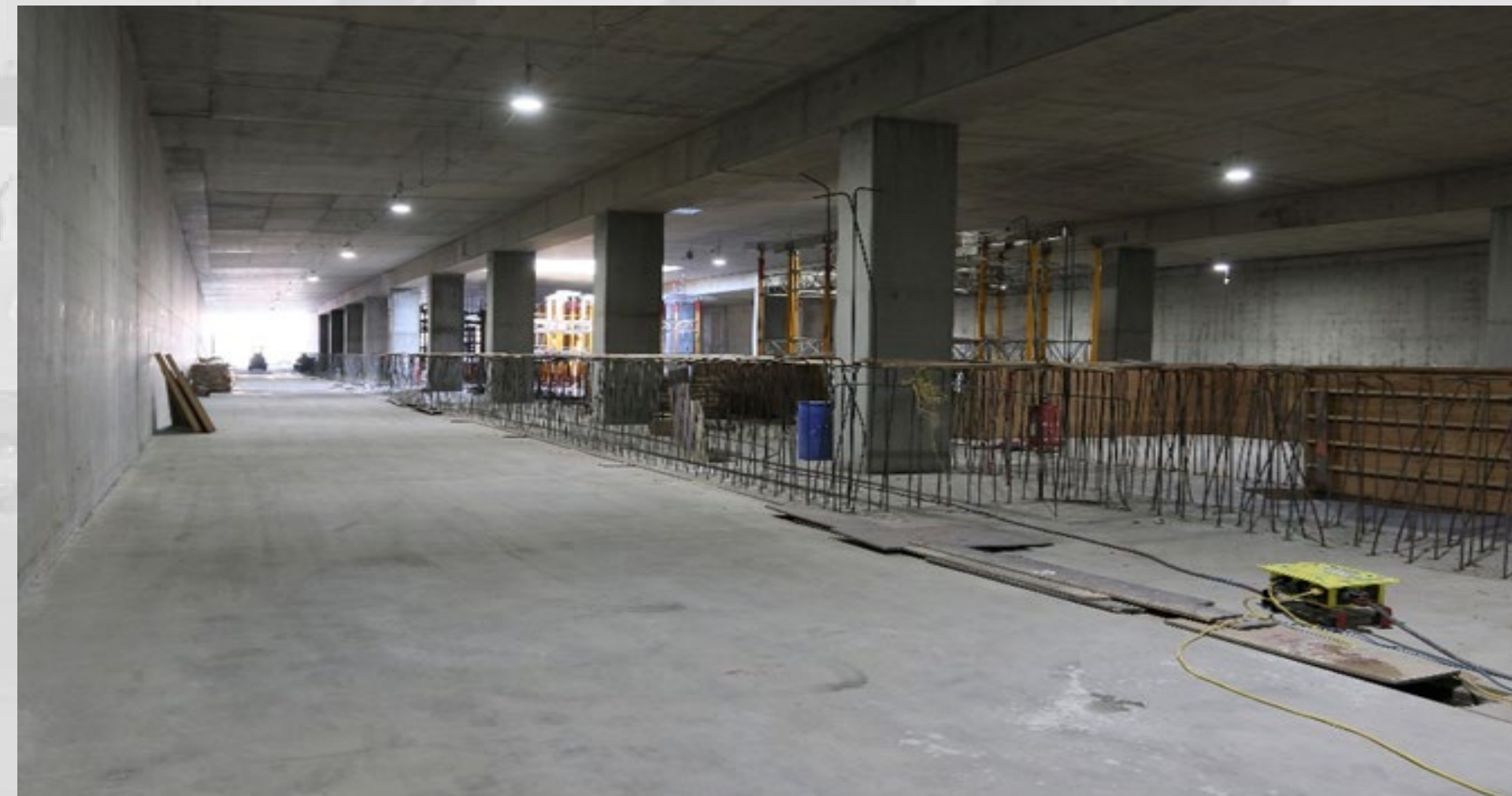
**Lid Rebar and Formwork**



**Lid Waterproofing**



**Wall Formwork**



**APM Cell Looking North**

**AGENDA:** DISCUSSION ITEM (C)  
**DATE:** 19 January 2022  
**TO:** Airport Advisory Board  
**FROM:** Bill Wyatt, Executive Director  
**SUBJECT:** **Winter Operations Presentation**

---

Treber Andersen, Airport Director of Operations and Dusty Bills, Assistant Maintenance Director will present on Winter Operations (presentation on file.)

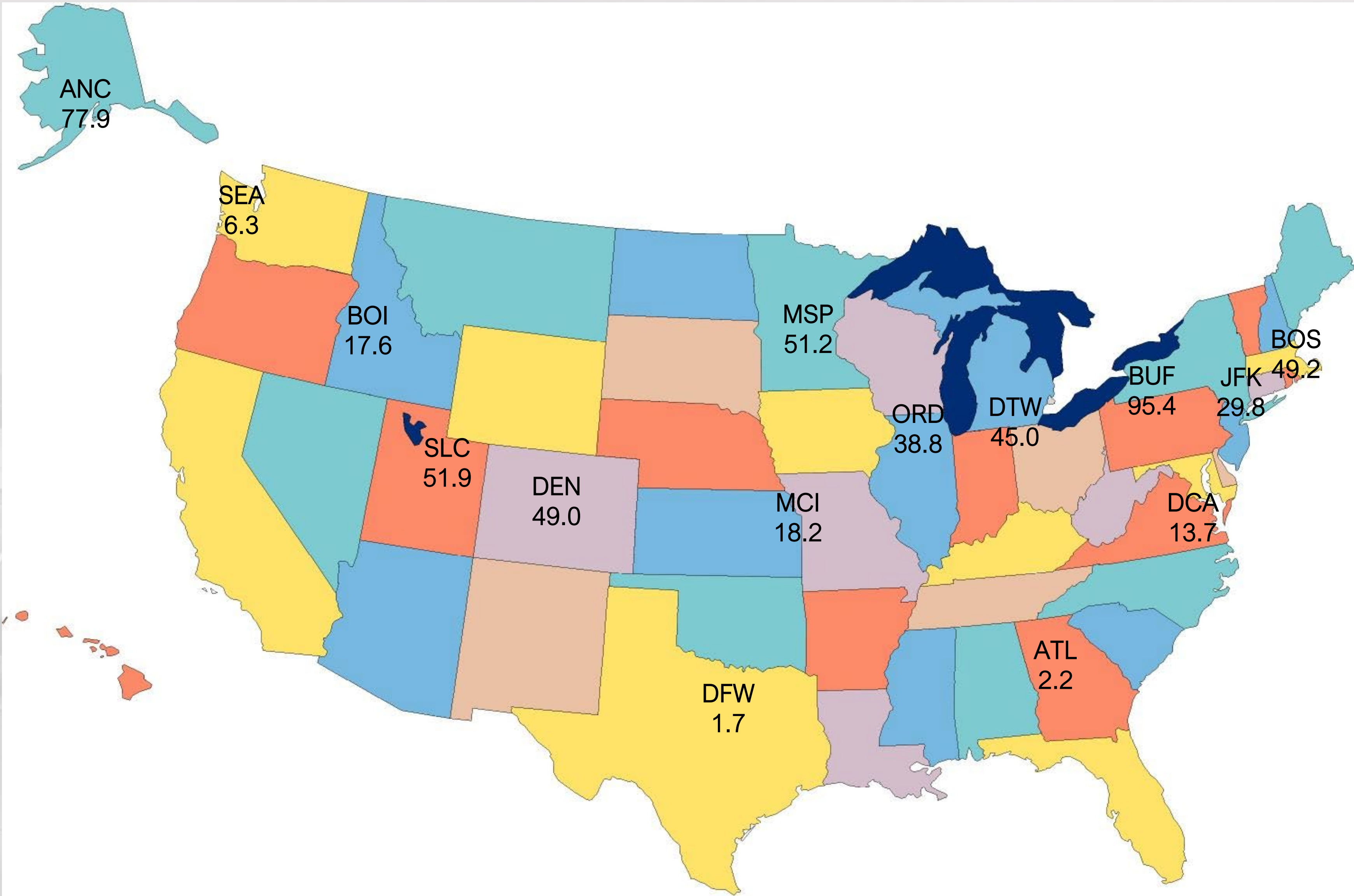


# WINTER OPERATIONS

01/19/2022



# Average Snowfall in Inches – Select airports 1991 to 2020





# Annual Snowfall Salt Lake City



Snowfall (Inches)



Average Season Snowfall 51.9"

# Snow and Ice Control Plan – Required by FAA



Must include procedures for:

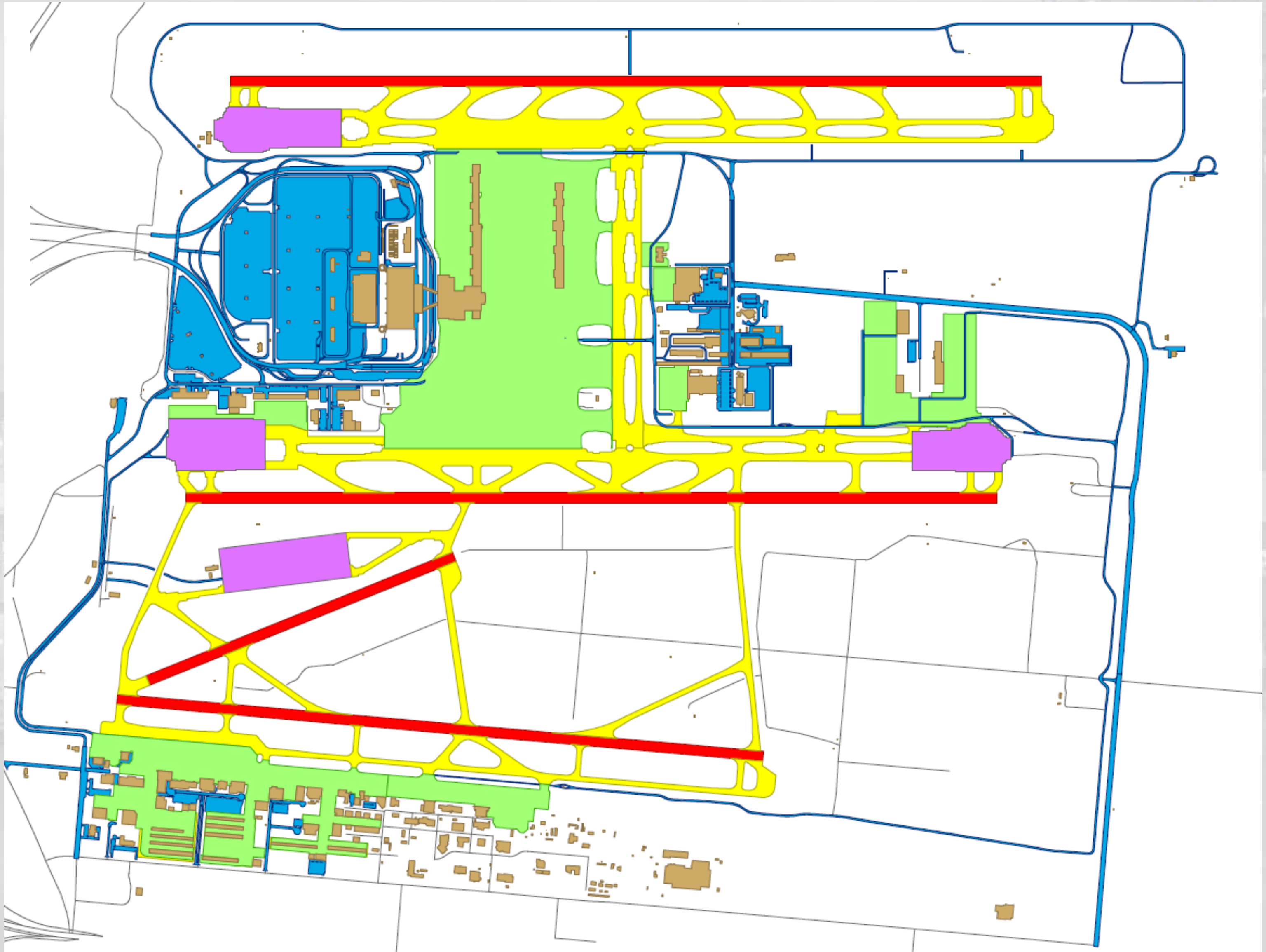
- Prompt Removal of Snow, Ice, and Slush
- Application of Chemicals for Snow and Ice Control
- Positioning of Snowbanks or Drifts Away from Aircraft Movement Areas
- Prompt Notification to Airport Users on Pavement Conditions


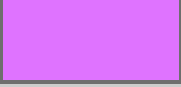





# Airport Snow Removal Areas



58,951,551 Sq. Ft.  
or  
1,353 Acres  
of Pavement



<u>LEGEND</u>	<u>AREA</u>	<u>ACRE</u>
 APRON	18,380,713.95	421.96
 DEICING PAD	4,334,432.81	99.51
 ROAD/PARKING	15,544,675.81	356.88
 RUNWAY	5,774,349.55	132.56
 TAXIWAY	14,917,378.90	342.46

# Snow Removal Team



Fully Staffed Team of Equipment Operators  
Per 12 Hour Shift:

52

Additional Support Staffing Includes

- Fleet Mechanics
- Contractor Teams (Snow Hauling)
- Airport Operations Personnel
- Airfield Electricians



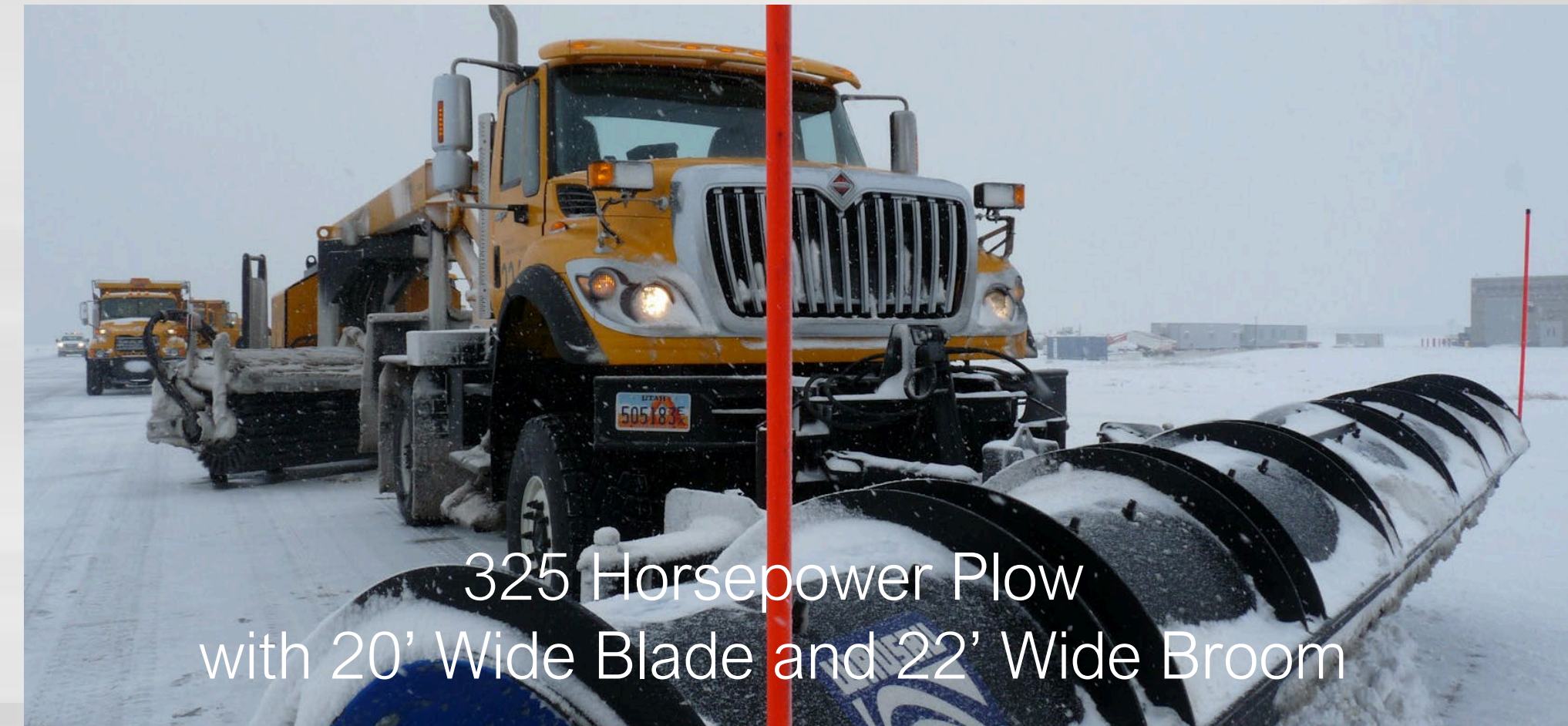
# Airfield Snow and Ice Removal Equipment

## Runway/Taxiway Equipment

- Runway Plows and Brooms
- Snow Blowers
- Liquid/Solid Deice Dispensers
- Sand Dispensers

## Ramp Equipment

- Front End Loaders



# Airfield Snow and Ice Removal Equipment

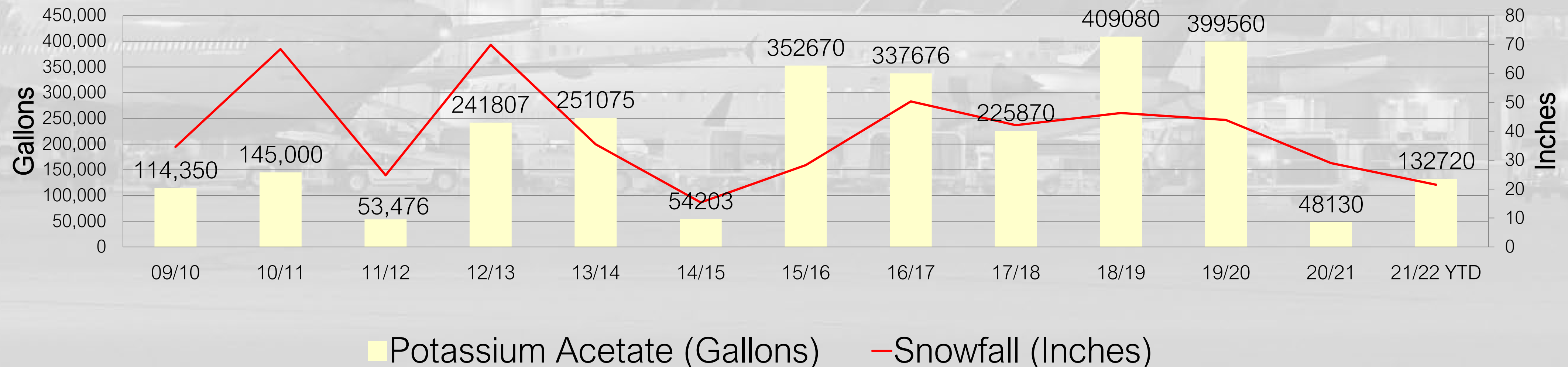
## Potassium Acetate (E36) – Liquid Anti-icer and Deicer

- Prevents Adhesion of Ice and Snow to the Pavement
- Effective to -25°F



4,000 Gallon Liquid Deice Truck  
with 75' Wide Spray Boom

### SLC Potassium Acetate Usage



# Airfield Snow and Ice Removal Equipment

## FAA Approved Solid Deice Chemicals

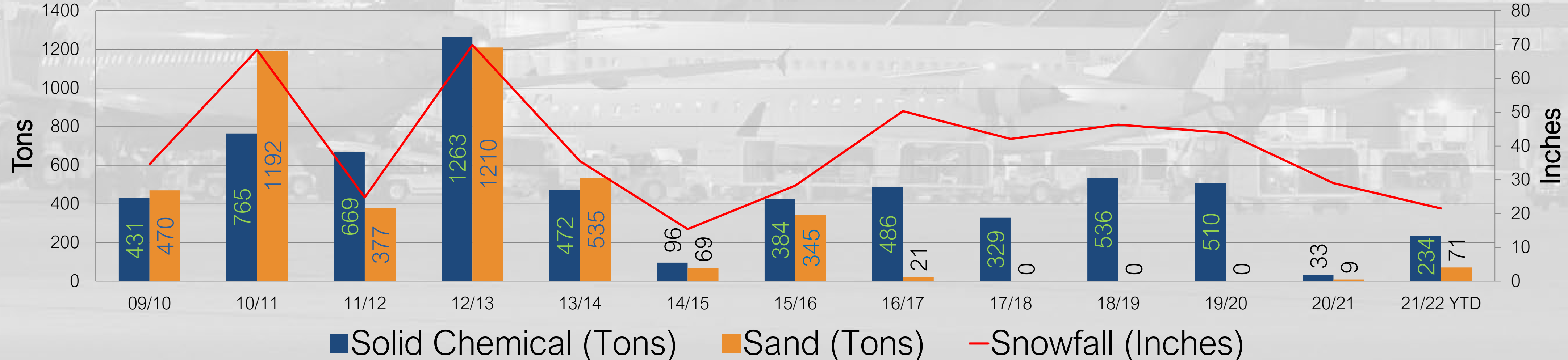
- NAAC, NAAF, Ice Care
- Effective to 0°F



12 Yard Sand and Solid Deice Truck with 50' Spreader

## FAA Approve Airfield Sand

### SLC Solid Chemical and Sand Usage



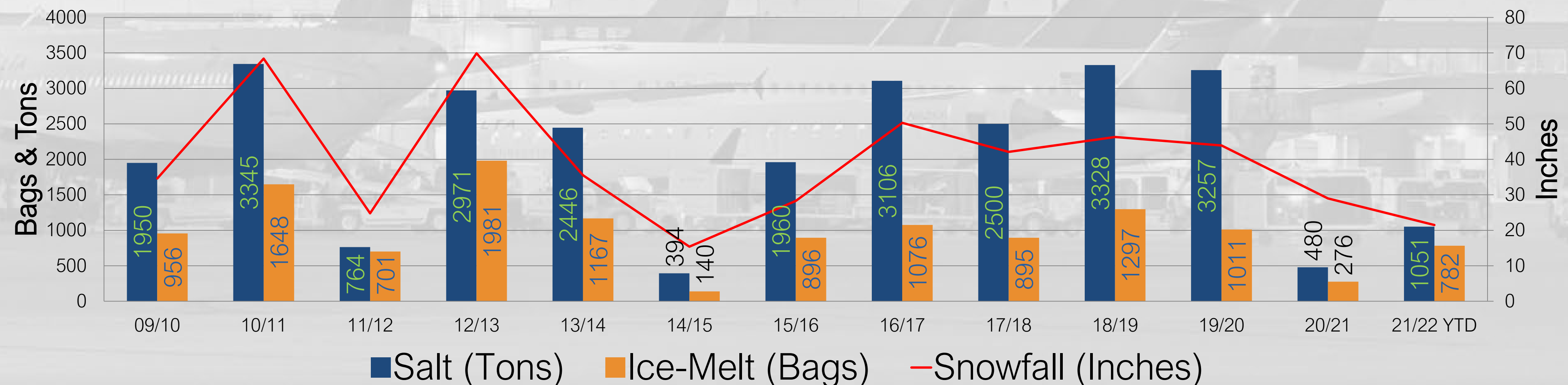
# Landside Snow and Ice Removal

## Joint Effort Between Airport Maintenance & Contracted Teams

- 55 Miles of Public Roadways
- Parking Lots and Sidewalks



### SLC Road Salt & Ice Melt Usage



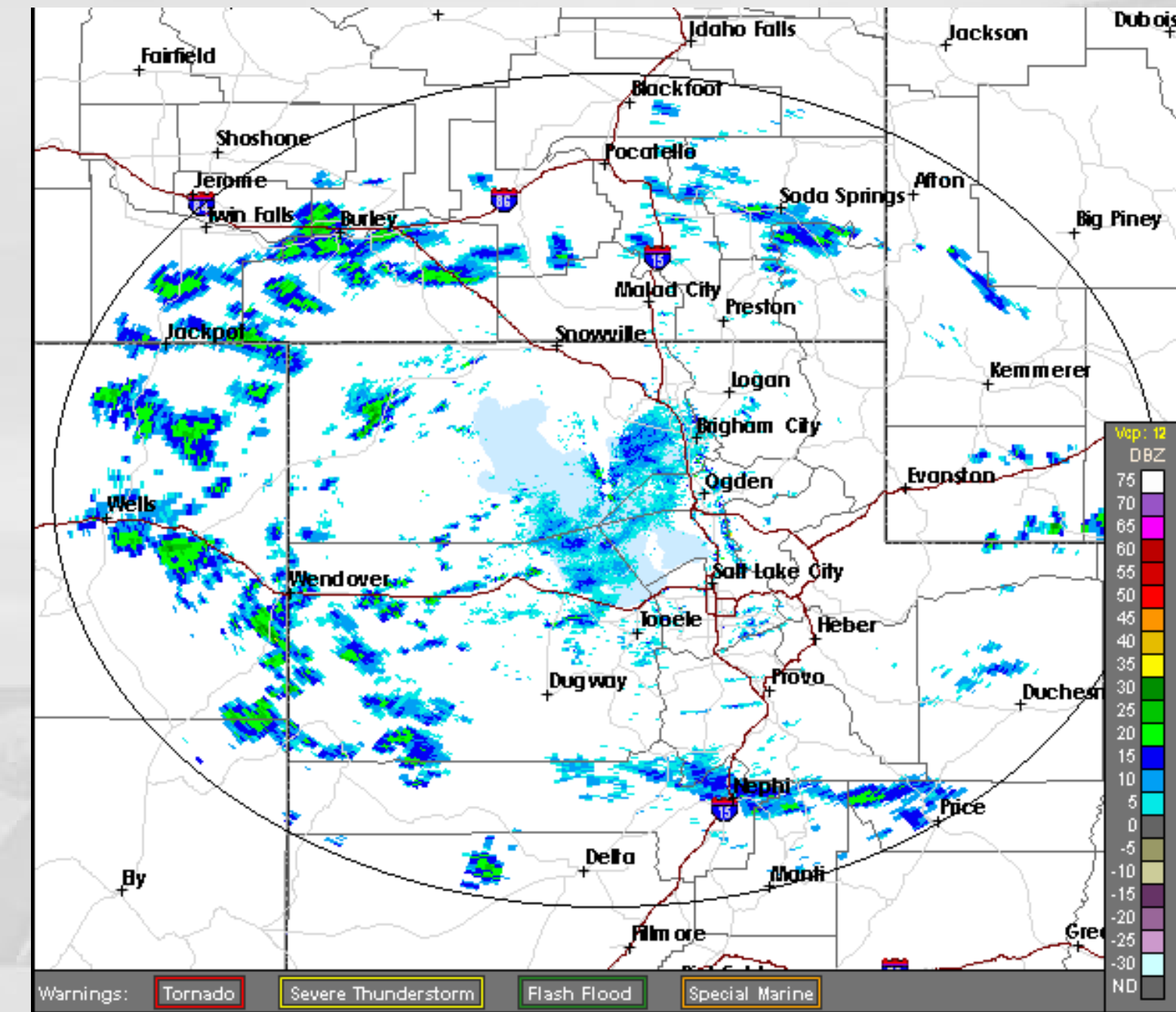


# Snow Operations – Behind the Scenes



## Pre-storm Planning

- Pre-storm Phone Briefings with Weather Forecasters, Airport Maintenance, Airport Operations, Airlines, Deice Providers, and Other Stakeholders
- Review Pavement Forecast
- Determine Labor Required
- Identify and Initiate Chemical Pretreatment of Runways and Taxiways When Appropriate



# Snow Operations – Behind the Scenes



## Establish Storm Action Plan with Snow Management Team

- Begin Snow Removal Operations at Onset of Accumulation
- Analyze Current and Ongoing Conditions
- Review Incoming/Outgoing Flights
- Focus on Priority 1 Surfaces
- Examine Type and Amount of Chemicals to be Applied
- Communicate Plan with ATCT and Stakeholders

Periodically Re-examine the Action Plan During the Snow Event and Initiate Adjustments



### Priority 1 Surfaces

Runways and High-speed Turn-offs  
Taxiways Connecting to Ramp Parking  
Air Carrier Ramps  
ARFF Ramp Areas  
Mutual Aid Access Points

# Snow Operations – Behind the Scenes

## Active Snow Removal Operations

- Coordinate with FAA Air Traffic Control
  - Moving Snow Removal Crews Around the Airfield
  - Opening and Closing Surfaces for Snow Removal
  - Receive Braking Action Reports from Flight Crews
- Monitor Airfield Conditions
  - Clean Airfield Signs
  - Snow Depths – Runways Close when ½” slush or 2” of dry snow is present
  - Snow Drifts – Runways, Taxiways, and Ramps
  - Tenant Snow Removal Activities
  - Aircraft Deicing Operations



# Snow Operations – Behind the Scenes

## Snow Desk

- Communicating and Coordinating the Snow Removal Plan
- Maintain Records (Snow Log)
  - Plan Execution
  - Runway Closure/Opening Times
  - Areas Plowed and Chemicals Applied
- Information Dissemination
  - Coordinating the Plan and Providing Updates
  - Issuing NOTAMS – Runway/Taxiway Conditions, Closures, and Problematic Areas

## NOTAM Example

!SLC 01/235 SLC RWY 34L FICON 4/4/4 30 PCT  
 COMPACTED SN DEICED LIQUID 100FT WID  
 OBS AT 2201071819. 2201071819-2201081819

Assessment Criteria	
Runway Condition Description	Code
<ul style="list-style-type: none"> <li>• Dry</li> </ul>	6
<ul style="list-style-type: none"> <li>• Frost</li> <li>• Wet (Includes Damp and 1/8 inch depth or less of water)</li> </ul> <p><b>1/8 inch (3mm) depth or less of:</b></p> <ul style="list-style-type: none"> <li>• Slush</li> <li>• Dry Snow</li> <li>• Wet Snow</li> </ul>	5
<p><b>5° F (-15°C) and Colder outside air temperature:</b></p> <ul style="list-style-type: none"> <li>• Compacted Snow</li> </ul>	4
<ul style="list-style-type: none"> <li>• Slippery When Wet (wet runway)</li> <li>• Dry Snow or Wet Snow (Any depth) over Compacted Snow</li> </ul> <p><b>Greater than 1/8 inch (3mm) depth of:</b></p> <ul style="list-style-type: none"> <li>• Dry Snow</li> <li>• Wet Snow</li> </ul> <p><b>Warmer than 5° F (-15°C) outside air temperature:</b></p> <ul style="list-style-type: none"> <li>• Compacted Snow</li> </ul>	3
<p><b>Greater than 1/8 (3mm) inch depth of:</b></p> <ul style="list-style-type: none"> <li>• Water</li> <li>• Slush</li> </ul>	2
<ul style="list-style-type: none"> <li>• Ice <sup>2</sup></li> </ul>	1
<ul style="list-style-type: none"> <li>• Wet Ice <sup>2</sup></li> <li>• Slush over Ice</li> <li>• Water over Compacted Snow <sup>2</sup></li> <li>• Dry Snow or Wet Snow over Ice <sup>2</sup></li> </ul>	0

# Behind the Scenes – After the Storm



## Post Event Debrief

- Involve All Stakeholders
- Brief on Storm Totals and Snow Removal Activities
- What Went Well?
- What Didn't Go Well?





Questions

**AGENDA:** DISCUSSION ITEM (D)  
**DATE:** 19 January 2022  
**TO:** Airport Advisory Board  
**FROM:** Bill Wyatt, Executive Director  
**SUBJECT:** **Election of Board Chair and Vice-Chair**

---

---

The Board will be asked to elect the Chair and Vice-Chair for 2022. At the last meeting, the Board nominated Steve Price as Chair and Theresa Foxley as Vice-Chair.

## **Airport Advisory Board Nominations and Elections Protocol**

### Nominations for Officers

Nominations are made during the last scheduled Board meeting of that calendar year, typically in November or December.

First, the Board Chair opens the floor to nominations for Chair:

**“Nominations are now open for Board Chair for Calendar Year \_\_\_\_\_”**

After nominations are complete or appear to be complete, a Board Member should make this motion:

**“I move that nominations for Board Chair be closed.”**

The Board Chair then asks for consent:

**“A motion has been made to close the floor to nominations for Chair. All in favor say ‘aye.’ Opposed? The motion carries.”**

Next, the Board Chair opens the floor to nominations for Vice-Chair:

**“Nominations are now open for Board Vice-Chair for Calendar Year \_\_\_\_\_”**

After nominations are complete or appear to be complete, a Board Member should make this motion:

**“I move that nominations for Board Vice-Chair be closed.”**

The Board Chair then asks for consent:

**“A motion has been made to close the floor to nominations for Vice-Chair. All in favor say ‘aye.’ Opposed? The motion carries.”**

The Board Chair should then state that elections will be held at the regularly scheduled January Board meeting.

### **Elections**

At the January meeting, the Board Chair calls for a vote, reminding members of who was nominated. If only one person was nominated for Chair and one for Vice-Chair, the Board Chair only needs to ask for a **“Vote by Acclamation.”** If more than one person was nominated for either office, the Board Chair calls for a vote. The new Chair and Vice-Chair take office at the February meeting.





Advisory Board  
Meeting

January 19, 2022

Information

**SALT LAKE CITY DEPARTMENT OF AIRPORTS**  
**(An Enterprise Fund of Salt Lake City Corporation)**  
**Statements of Net Position (Unaudited)**  
**(Amounts in Thousands)**

<i>As of November 30,</i>	<b>2021</b>	<b>2020</b>
<b>ASSETS</b>		
<b>Current Assets</b>		
Cash and cash equivalents	\$ 193,789	\$ 23,188
Restricted cash and cash equivalents	615,732	35,485
Restricted investments	31,516	19,008
Airline and rental fees receivable	17,080	22,080
Loans receivable	7,347	-
Other assets	6,613	(1,631)
<b>Total current assets</b>	<b>872,077</b>	<b>98,130</b>
<b>Noncurrent Assets</b>		
Restricted cash and cash equivalents	185,730	110,701
Restricted investments	129,037	65,061
Investments	921	122,793
Loans receivable	31,895	23,193
Other assets	2,909	6,492
<b>Total noncurrent assets and investments</b>	<b>350,492</b>	<b>328,240</b>
<b>Capital assets</b>		
Land	111,696	111,696
Building and improvements	3,445,889	1,419,993
Equipment	341,458	169,490
Construction in progress	493,856	2,622,281
<b>Total capital assets - at cost</b>	<b>4,392,899</b>	<b>4,323,460</b>
Less accumulated depreciation	896,024	1,104,628
<b>Net capital assets</b>	<b>3,496,875</b>	<b>3,218,832</b>
<b>Total noncurrent assets</b>	<b>3,847,367</b>	<b>3,547,072</b>
<b>Total Assets</b>	<b>4,719,444</b>	<b>3,645,202</b>
<b>Deferred Outflows of Resources</b>	<b>4,413</b>	<b>4,521</b>
<b>Total Assets and Deferred Outflows of Resources</b>	<b>\$ 4,723,857</b>	<b>\$ 3,649,723</b>

**SALT LAKE CITY DEPARTMENT OF AIRPORTS**  
**(An Enterprise Fund of Salt Lake City Corporation)**  
**Statements of Net Position (Unaudited)**  
**(Amounts in Thousands)**

<i>As of November 30,</i>	<b>2021</b>	<b>2020</b>
<b>LIABILITIES</b>		
<b>Current Liabilities</b>		
Accounts payable	\$ 40,070	\$ 38,729
Accrued compensation	1,699	1,275
Interest payable	52,664	38,657
Other accrued liabilities	19,389	46,855
Current bonds payable	20,345	-
<b>Total current liabilities</b>	<b>134,167</b>	<b>125,516</b>
<b>Noncurrent Liabilities</b>		
Revenue bonds payable	3,150,548	2,037,127
Noncurrent compensation liability	4,360	3,801
Net pension liability	1,152	8,431
Other accrued liabilities	24,560	50,849
<b>Total noncurrent liabilities</b>	<b>3,180,620</b>	<b>2,100,208</b>
<b>Total Liabilities</b>	<b>3,314,787</b>	<b>2,225,724</b>
<b>Deferred Inflows of Resources</b>		
Deferred inflows - revenue collected in advance	7,238	5,469
Deferred inflows - pension	8,944	4,993
<b>Total Deferred Inflows of Resources</b>	<b>16,182</b>	<b>10,462</b>
<b>NET POSITION</b>		
Net investment in capital assets	1,225,685	1,358,040
Restricted for		
Capital projects	62,316	53,909
Debt service	323,446	175,966
Unrestricted	(218,559)	(174,378)
<b>Net Position</b>	<b>1,392,888</b>	<b>1,413,537</b>
<b>Total Liabilities, Deferred Inflows of Resources, and Net Position</b>	<b>\$ 4,723,857</b>	<b>\$ 3,649,723</b>

**SALT LAKE CITY DEPARTMENT OF AIRPORTS**

(An Enterprise fund of Salt Lake City Corporation)

**Statements of Revenues, Expenses, and Changes in Fund Net Position (Unaudited)**

(Amounts in Thousands)

<i>for the Five month period ended November,</i>	<b>2021</b>	<b>2020</b>
<b>Operating Revenues</b>		
Airline revenue	\$ 68,568	\$ 45,537
Terminal concessions	9,438	3,022
Landside concessions	36,243	14,035
Lease revenue	3,828	2,493
General aviation	1,379	1,243
State aviation tax	1,289	524
Other revenue	1,992	3,434
Operating revenues	122,737	70,288
Less airline revenue sharing	(5,632)	(2,391)
Total operating revenues	117,105	67,897
<b>Operating Expenses</b>		
Salaries and benefits	22,835	21,456
Materials and supplies	4,229	3,173
Maintenance contracts	8,056	3,937
Charges and services	10,999	8,372
Utilities	2,219	1,723
Inter-governmental	6,878	6,200
Other expenses	3,350	2,861
Total operating expenses before depreciation	58,566	47,722
<b>Operating Income Before Depreciation</b>	58,539	20,175
<b>Depreciation Expense</b>	82,029	23,874
<b>Operating Loss</b>	(23,490)	(3,699)
<b>Non-Operating Revenues (Expenses)</b>		
Passenger facility charges	20,485	9,158
Customer facility charges	5,021	2,443
Interest income	977	440
Interest expense	(50,553)	(41,634)
Bond issuance costs	(4,150)	-
Contribution of capital assets	239	-
Other revenue (expenses), net	3,888	(36)
Net non-operating loss	(24,093)	(29,629)
<b>Capital Contributions</b>		
Contributions and grants	24,249	16,293
Total capital contributions	24,249	16,293
<b>Net Position</b>		
Decrease in net position	(23,334)	(17,035)
Net Position, beginning of period	1,416,222	1,430,572
Net Position, end of period	\$ 1,392,888	\$ 1,413,537

**SALT LAKE CITY DEPARTMENT OF AIRPORTS**

(An Enterprise fund of Salt Lake City Corporation)

**OPERATING REVENUES AND EXPENDITURES TO BUDGET (Unaudited)**

(Amounts in Thousands)

	<b>Jul 2021 - Nov 2021</b>	<b>Jul 2021 - Nov 2021</b>	<b>SURPLUS/ DEFICIT</b>	<b>PERCENT CHANGE</b>
	<b>ACTUALS</b>	<b>BUDGET</b>		
<b>Revenues</b>				
Landing Fees	\$ 26,997	\$ 23,794	\$ 3,203	13.5%
Fuel Farm	878	750	128	17.1%
Aircraft Remain Overnight Fees	225	190	35	18.3%
Cargo Bldg. & Ramp Use Fee	709	730	(21)	-2.8%
Security Charges to TSA	107	141	(34)	-24.0%
Extraordinary Service Charges	20	20	(0)	-2.3%
Passenger Boarding Bridges	618	727	(109)	-15.0%
Tenant Telephone Fees	25	26	(1)	-5.2%
Terminal Rents	38,575	39,501	(926)	-2.3%
General Aviation Hangars	479	505	(26)	-5.1%
FBO Hangars/Fuel Oil Royalty	280	226	54	24.0%
Flight Kitchens	878	558	320	57.4%
Other Buildings & Office Space	2,428	2,466	(38)	-1.6%
Food Service & Vending	5,604	4,001	1,603	40.1%
News/Gift Shop	3,565	2,022	1,543	76.3%
Car Rental	14,633	11,439	3,194	27.9%
Leased Site Areas	1,865	1,610	255	15.8%
Auto Parking/Ground Transportation	21,593	13,362	8,231	61.6%
Advertising	268	104	164	157.4%
State Aviation Fuel Tax	1,289	830	459	55.3%
Military	78	78	-	0.0%
Glycol Recycling Sales	128	100	28	27.9%
Auxiliary Airport Fuel Sales	620	579	41	7.2%
Other	875	1,067	(192)	-18.0%
Less: Airline Revenue Sharing	(5,632)	(991)	(4,641)	468.54%
<b>Total Operating Revenues</b>	<b>117,105</b>	<b>103,835</b>	<b>13,270</b>	<b>12.8%</b>
<b>Expenses</b>				
Salary & Wages	16,034	17,133	1,099	6.4%
Employee Benefits	7,299	7,650	351	4.6%
Maintenance Supplies	2,418	3,761	1,343	35.7%
Automotive Supplies	1,320	1,669	349	20.9%
Other Supplies	491	1,096	605	55.2%
Insurance Premiums	2,539	1,722	(817)	-47.4%
Janitorial Service	5,938	5,911	(27)	-0.5%
Maintenance Contracts	2,118	3,078	960	31.2%
Other Contractual Services	4,876	6,735	1,859	27.6%
Professional & Tech Services	6,123	9,793	3,670	37.5%
Utilities	2,219	3,142	923	29.4%
Administrative Service Fee	883	766	(117)	-15.3%
Aircraft Rescue Fire Fighting	2,433	2,434	1	0.0%
Police Services	3,562	3,562	0	0.0%
Other Expenses	811	1,008	197	19.6%
Contingency Reserve	-	417	417	100.0%
Operating Expenses Before Capitalized Salaries	59,064	69,877	10,813	15.5%
Capitalized Salaries	498	498	-	0.0%
<b>Total Operating Expenses</b>	<b>58,566</b>	<b>69,379</b>	<b>10,813</b>	<b>15.6%</b>
<b>Operating Income</b>	<b>\$ 58,539</b>	<b>\$ 34,456</b>	<b>\$ 24,083</b>	<b>69.9%</b>

**SALT LAKE CITY DEPARTMENT OF AIRPORTS**

(An Enterprise fund of Salt Lake City Corporation)

**OPERATING REVENUES AND EXPENDITURES TO PRIOR YEAR (Unaudited)**

(Amounts in Thousands)

	<b>Jul 2021 - Nov 2021</b>	<b>Jul 2020 - Nov 2020</b>	<b>DOLLAR CHANGE</b>	<b>PERCENT CHANGE</b>
<b>Revenues</b>				
Landing Fees	\$ 26,997	\$ 19,509	\$ 7,488	38.4%
Fuel Farm	878	225	653	290.9%
Aircraft Remain Overnight Fees	225	183	42	23.0%
Cargo Bldg. & Ramp Use Fee	709	715	(6)	-0.8%
Security Charges to TSA	107	285	(178)	-62.4%
Extraordinary Service Charges	20	64	(44)	-69.7%
Passenger Boarding Bridges	618	587	31	5.3%
Tenant Telephone Fees	25	74	(49)	-66.8%
Terminal Rents	38,575	22,709	15,866	69.9%
General Aviation Hangars	479	529	(50)	-9.4%
FBO Hangars/Fuel Oil Royalty	280	201	79	39.3%
Flight Kitchens	878	370	508	137.3%
Other Buildings & Office Space	2,428	2,479	(51)	-2.1%
Food Service & Vending	5,604	1,948	3,656	187.7%
News/Gift Shops	3,565	980	2,585	263.8%
Car Rental	14,633	7,323	7,310	99.8%
Leased Site Areas	1,865	1,303	562	43.1%
Auto Parking/Ground Transportation	21,593	6,707	14,886	222.0%
Advertising	268	94	174	185.8%
State Aviation Fuel Tax	1,289	524	765	146.0%
Military	78	78	0	0.0%
Glycol Recycling Sales	128	84	44	52.3%
Auxiliary Airport Fuel Sales	620	513	107	20.8%
Other	875	2,804	(1,929)	-68.8%
Less: Airline Revenue Sharing	(5,632)	(2,391)	(3,241)	135.5%
<b>Operating Revenues</b>	<b>117,105</b>	<b>67,897</b>	<b>49,208</b>	<b>72.5%</b>
<b>Expenses</b>				
Salary & Wages	\$ 16,034	\$ 15,172	\$ 862	5.7%
Employee Benefits	7,299	6,796	503	7.4%
Maintenance Supplies	2,418	1,829	589	32.2%
Automotive Supplies	1,320	947	373	39.4%
Other Supplies	491	397	94	23.8%
Insurance Premiums	2,539	2,520	19	0.7%
Janitorial Service	5,938	3,271	2,667	81.5%
Maintenance Contracts	2,118	666	1,452	217.9%
Other Contractual Services	4,876	3,500	1,376	39.3%
Professional & Tech Service	6,123	4,871	1,252	25.7%
Utilities	2,219	1,723	496	28.8%
Administrative Service Fee	883	549	334	60.7%
Aircraft Rescue Fire Fighting	2,433	2,192	241	11.0%
Police Services	3,562	3,458	104	3.0%
Other Expenses	811	341	470	137.9%
Operating Expenses Before Capitalized Salaries	59,064	48,232	10,832	22.5%
Capitalized Salaries	498	510	(12)	-2.4%
<b>Total Operating Expenses</b>	<b>58,566</b>	<b>47,722</b>	<b>10,844</b>	<b>22.7%</b>
<b>Operating Income</b>	<b>\$ 58,539</b>	<b>\$ 20,175</b>	<b>\$ 38,364</b>	<b>190.2%</b>

# SALT LAKE CITY DEPARTMENT OF AIRPORTS

(An Enterprise fund of Salt Lake City Corporation)

## Statements of Cash Flows

(Amounts in Thousands)

<i>For the month ended September 30,</i>	<b>2021</b>	<b>2020</b>
<b>Cash Flows from Operating Activities</b>		
Cash received from providing services	\$ 69,020	\$ 38,908
Cash paid for services for intra-governmental charges	(1,834)	(1,315)
Cash paid to suppliers	(23,527)	(19,412)
Cash paid to employees	(12,061)	(11,172)
<b>Net cash from operating activities</b>	<b>31,598</b>	<b>7,009</b>
<b>Cash Flows from Investing Activities</b>		
Cash paid for investments	(106,468)	(163,587)
Cash proceeds from investments	4,450	178,937
Interest received on investments and concession loans	10	442
Payments for concession loans	(593)	(15,181)
Payments received on concession loans	1,952	-
<b>Net cash from investing activities</b>	<b>(100,649)</b>	<b>610</b>
<b>Cash Flows from Capital and Related Financing Activities</b>		
Purchase of capital equipment	(1,557)	(3,636)
Payments for acquisition and construction of capital assets	(138,802)	(200,836)
Proceeds from issuance of revenue bonds payable	1,139,949	-
Payment for capital assets contributed to TSA	(239)	-
Payment on line of credit	(267,600)	-
Interest paid on bonds and line of credit	(46,389)	(46,389)
Bond issuance costs	(1,418)	-
Passenger facility charges	12,800	3,325
Customer facility charges	4,116	2,026
Proceeds from sale of capital assets and equipment	52	-
Contributions and grants	27,554	6,082
<b>Net cash used for capital and related financing activities</b>	<b>728,465</b>	<b>(239,428)</b>
<b>Net (Decrease) in Cash and Cash Equivalents</b>	<b>659,414</b>	<b>(231,809)</b>
<b>Cash and Cash Equivalents - Beginning of Year</b>	<b>292,793</b>	<b>455,477</b>
<b>Cash and Cash Equivalents - End of Year</b>	<b>\$ 952,207</b>	<b>\$ 223,669</b>

## SALT LAKE CITY DEPARTMENT OF AIRPORTS

(An Enterprise fund of Salt Lake City Corporation)

### Statements of Cash Flows (Unaudited)

(Amounts in Thousands)

<i>for the Three month period ended September,</i>	<b>2021</b>	<b>2020</b>
<b>Reconciliation of Operating Income to Net</b>		
<b>Cash from Operating Activities</b>		
Operating loss	\$ (9,607)	\$ (2,701)
Adjustments to reconcile operating loss to net cash from operating activities		
Depreciation	49,217	14,324
Changes in assets and liabilities		
Airline and rental fee receivable	2,265	4,374
Other assets	960	(5,256)
Deferred outflows	-	-
Accounts payable	(11,776)	(5,487)
Accrued compensation	-	-
Other accrued liabilities	334	1,024
Deferred inflows	136	738
Deposits and advance rentals	69	(7)
<b>Net cash from operating activities</b>	<b>31,598</b>	<b>7,010</b>
<b>Schedule of Non-cash Transactions Affecting Net Position</b>		
Contributions and grants	(30,304)	(13,355)
Passenger facility charges (includes interest)	(3,844)	-
Customer facility charges (includes interest)	(2,460)	(1,788)
Bond issuance costs	(1,592)	-
Contributions of capital assets	(239)	-
<b>Total Noncash Transactions Affecting Net Position</b>	<b>\$ (38,439)</b>	<b>\$ (15,143)</b>





**SALT LAKE CITY INTERNATIONAL AIRPORT  
AIR TRAFFIC STATISTICS AND ACTIVITY REPORT  
ELEVEN MONTHS ENDED NOVEMBER 2021**

	November 2021	CHANGE	YTD 2021	CHANGE	12 MO ROLLING Ending 11/2021	CHANGE
<b>PASSENGERS</b>						
<i>DOMESTIC</i>						
Enplaned - Local	601,421	105.84%	6,379,373	74.42%	6,736,155	57.12%
Enplaned - Connections	399,073	97.57%	3,796,681	81.85%	3,980,070	55.71%
Less International	-30,909		-257,381		-275,185	
Enplaned	969,585	101.94%	9,918,673	77.02%	10,441,040	56.71%
Deplaned - Local	599,827	113.88%	6,368,420	75.42%	6,740,455	56.99%
Deplaned - Connection	399,073	97.57%	3,796,681	81.85%	3,980,070	55.71%
Less International	-30,903		-261,017		-276,856	
Deplaned	967,997	105.87%	9,904,084	78.05%	10,443,669	56.89%
<b>TOTAL DOMESTIC</b>	<b>1,937,582</b>	<b>103.89%</b>	<b>19,822,757</b>	<b>77.53%</b>	<b>20,884,709</b>	<b>56.80%</b>
<i>INTERNATIONAL</i>						
Enplaned	30,909	120.23%	257,381	81.03%	275,185	52.30%
Deplaned	30,903	152.02%	261,017	67.76%	276,856	43.35%
<b>TOTAL INTERNATIONAL</b>	<b>61,812</b>	<b>135.05%</b>	<b>518,398</b>	<b>74.10%</b>	<b>552,041</b>	<b>47.67%</b>
<b>TOTAL PASSENGERS</b>	<b>1,999,394</b>	<b>104.72%</b>	<b>20,341,155</b>	<b>77.44%</b>	<b>21,436,750</b>	<b>56.55%</b>
<b>LANDED WEIGHT</b>						
Air Carriers	1,173,559,449	18.24%	13,454,351,529	40.09%	14,497,299,083	33.87%
Cargo Carriers	112,030,662	4.24%	1,159,160,393	0.01%	1,336,249,253	1.93%
<b>TOTAL LANDED WEIGHT (LBS)</b>	<b>1,285,590,111</b>	<b>16.87%</b>	<b>14,613,511,922</b>	<b>35.77%</b>	<b>15,833,548,336</b>	<b>30.42%</b>
<b>MAIL</b>						
Enplaned	2,686,359	-6.85%	31,591,489	-1.67%	33,010,612	-1.98%
Deplaned	1,362,832	-31.75%	15,381,267	-19.93%	16,421,498	-19.34%
<b>TOTAL MAIL (LBS)</b>	<b>4,049,191</b>	<b>-17.04%</b>	<b>46,972,756</b>	<b>-8.50%</b>	<b>49,432,110</b>	<b>-8.52%</b>
<b>CARGO</b>						
Enplaned	16,621,470	-2.94%	186,616,793	-0.20%	210,374,280	1.26%
Deplaned	17,585,406	3.32%	182,654,559	-2.55%	204,514,894	-1.65%
<b>TOTAL CARGO (LBS)</b>	<b>34,206,876</b>	<b>0.18%</b>	<b>369,271,352</b>	<b>-1.38%</b>	<b>414,889,174</b>	<b>-0.20%</b>
<b>MAIL &amp; CARGO</b>						
Enplaned	8,311	-2.94%	93,308	-0.20%	105,187	1.26%
Deplaned	8,793	3.31%	91,327	-2.55%	102,257	-1.65%
<b>TOTAL MAIL &amp; CARGO (TONS)</b>	<b>17,104</b>	<b>0.18%</b>	<b>184,635</b>	<b>-1.38%</b>	<b>207,444</b>	<b>-0.20%</b>
<b>AIRCRAFT OPERATIONS</b>						
Passenger Aircraft	19,534	12.51%	229,488	35.43%	247,938	29.77%
All-Cargo Aircraft	1,712	2.03%	18,534	0.83%	20,858	1.86%
General Aviation	5,618	21.68%	63,803	6.92%	69,262	7.07%
Military	222	24.72%	2,661	-3.76%	2,880	-0.83%
<b>TOTAL AIRCRAFT OPERATIONS</b>	<b>27,086</b>	<b>13.64%</b>	<b>314,486</b>	<b>25.65%</b>	<b>340,938</b>	<b>22.14%</b>

**SALT LAKE CITY INTERNATIONAL AIRPORT  
PASSENGER TRAFFIC REPORT  
ELEVEN MONTHS ENDED NOVEMBER 2021**

	November 2020	November 2021	% CHANGE	YTD 2020	YTD 2021	% CHANGE	12 MO ROLLING Ending 11/2021	% CHANGE
<b>ENPLANED PASSENGERS</b>								
AEROMEXICO	-	2,816	100.0%	11,436	2,816	-75.4%	2,816	-81.7%
ALASKA	1,601	9,712	506.6%	47,072	101,893	116.5%	103,030	84.7%
Horizon Air / Alaska	1,740	1,459	-16.1%	9,958	24,619	147.2%	26,527	140.9%
Skywest / Alaska	4,308	10,167	136.0%	71,616	130,739	82.6%	138,447	59.9%
AMERICAN	20,042	39,317	96.2%	311,361	517,153	66.1%	548,134	49.7%
Compass	-	-	0.0%	6,563	-	-100.0%	-	-100.0%
Envoy Air	-	1,530	100.0%	733	23,810	3148.3%	23,810	3148.3%
American/Mesa Air	818	77	-90.6%	818	10,683	1206.0%	10,786	1218.6%
Republic	-	-	0.0%	816	5,201	537.4%	5,201	537.4%
SkyWest (American)	7,969	10,585	32.8%	55,334	86,621	56.5%	93,314	51.9%
DELTA	276,123	595,030	115.5%	3,098,016	5,633,657	81.8%	5,918,272	60.1%
SkyWest (Delta Connection)	100,239	163,598	63.2%	1,040,356	1,767,650	69.9%	1,870,001	50.4%
Compass (Delta Connection)	-	-	0.0%	-	-	0.0%	-	-100.0%
FRONTIER	14,088	14,103	0.1%	128,175	214,748	67.5%	231,611	54.5%
JETBLUE	4,247	15,250	259.1%	109,592	177,719	62.2%	184,724	30.7%
SOUTHWEST	39,204	98,938	152.4%	575,868	1,017,913	76.8%	1,071,350	59.5%
UNITED	8,450	10,111	19.7%	124,239	174,956	40.8%	184,582	30.8%
GoJet Airlines	-	-	0.0%	-	-	0.0%	-	-100.0%
Express Jet	-	-	0.0%	600	-	-100.0%	-	-100.0%
Mesa Airlines (United Express)	-	-	0.0%	5,650	9,163	62.2%	9,260	2.2%
Republic Airways (United)	-	575	100.0%	1,953	3,759	92.5%	4,348	14.2%
SkyWest (United Express)	15,346	27,225	77.4%	144,870	272,727	88.3%	289,785	65.0%
Charters	-	1	100.0%	255	227	-11.0%	227	-41.2%
West Coast Charters	-	0	0.0%	-	0	0.0%	0	0.0%
<b>TOTAL ENPLANED PASSENGERS</b>	<b>494,175</b>	<b>1,000,494</b>	<b>102.5%</b>	<b>5,745,281</b>	<b>10,176,054</b>	<b>77.1%</b>	<b>10,716,225</b>	<b>56.6%</b>
AeroMexico	-	3,200	100.0%	11,393	3,200	-71.9%	3,200	-79.4%
ALASKA AIR	1,566	10,094	544.6%	45,595	104,243	128.6%	105,222	92.9%
Horizon Air / Alaska	1,626	1,549	-4.7%	10,074	24,739	145.6%	26,680	139.0%
Skywest / Alaska	3,934	9,378	138.4%	74,765	128,500	71.9%	136,444	51.3%
AMERICAN	18,671	38,524	106.3%	302,971	519,770	71.6%	551,792	53.6%
Compass	-	-	0.0%	6,494	-	-100.0%	-	-100.0%
Envoy Air (American)	-	1,512	100.0%	722	23,321	3130.1%	23,321	3130.1%
Mesa Air	877	69	-92.1%	877	10,382	1083.8%	10,502	1097.5%
Republic	-	-	0.0%	766	4,901	539.8%	4,901	539.8%
SkyWest (American)	7,155	10,376	45.0%	55,475	86,727	56.3%	94,154	50.9%
DELTA	269,460	596,692	121.4%	3,096,937	5,621,255	81.5%	5,913,826	59.0%
SkyWest (Delta Connection)	100,302	162,122	61.6%	1,035,477	1,767,033	70.6%	1,869,772	50.8%
Compass (Delta Connection)	-	-	0.0%	-	-	0.0%	-	-100.0%
FRONTIER	14,007	13,756	-1.8%	129,793	216,112	66.5%	233,217	53.7%
JETBLUE	4,596	15,073	228.0%	111,298	173,685	56.1%	181,361	25.2%
SOUTHWEST	37,337	98,309	163.3%	564,926	1,008,661	78.5%	1,063,117	60.5%
UNITED	7,893	10,012	26.8%	119,085	177,721	49.2%	189,803	39.4%
GoJet Airlines	-	-	0.0%	-	-	0.0%	-	-100.0%
Express Jet	-	-	0.0%	582	-	-100.0%	-	-100.0%
Mesa Airlines / United Express	-	-	0.0%	5,597	10,596	89.3%	10,709	17.3%
Republic Airways (United)	-	525	100.0%	2,037	3,636	78.5%	4,401	6.0%
SkyWest (United Express)	15,026	27,709	84.4%	143,095	280,267	95.9%	297,751	69.7%
Charters	-	-	0.0%	191	352	84.3%	352	8.3%
West Coast Charters	-	-	0.0%	-	-	0.0%	-	0.0%
<b>TOTAL DEPLANED PASSENGERS</b>	<b>482,450</b>	<b>998,900</b>	<b>107.0%</b>	<b>5,718,150</b>	<b>10,165,101</b>	<b>77.8%</b>	<b>10,720,525</b>	<b>56.5%</b>
<b>TOTAL PASSENGERS*</b>	<b>976,625</b>	<b>1,999,394</b>	<b>104.7%</b>	<b>11,463,431</b>	<b>20,341,155</b>	<b>77.4%</b>	<b>21,436,750</b>	<b>56.6%</b>
<b>INTERNATIONAL - ENPLANED</b>								
AEROMEXICO	-	2,816	100.0%	11,436	2,816	-75.4%	2,816	-81.7%
DELTA	14,035	26,706	90.3%	124,924	252,117	101.8%	269,921	75.1%
SkyWest (Delta Connection)	-	1,387	100.0%	5,736	2,446	-57.4%	2,446	-77.1%
Compass	-	-	0.0%	-	-	0.0%	-	-100.0%
KLM ROYAL DUTCH AIRLINES	-	-	0.0%	-	-	0.0%	-	0.0%
Charters	-	-	0.0%	82	-	-100.0%	-	-100.0%
<b>TOTAL ENPLANED INTERNATIONAL</b>	<b>14,035</b>	<b>30,909</b>	<b>120.2%</b>	<b>142,178</b>	<b>257,379</b>	<b>81.0%</b>	<b>275,183</b>	<b>52.3%</b>
AEROMEXICO	-	3,200	100.0%	11,393	3,200	-71.9%	3,200	-79.4%
DELTA	12,262	26,270	114.2%	134,906	255,140	89.1%	270,979	66.2%
SkyWest (Delta Connection)	-	1,433	100.0%	9,289	2,675	-71.2%	2,675	-80.8%
Compass	-	-	0.0%	-	-	0.0%	-	-100.0%
KLM ROYAL DUTCH AIRLINES	-	-	0.0%	-	-	0.0%	-	0.0%
Charters	-	-	0.0%	-	-	0.0%	-	0.0%
<b>TOTAL DEPLANED INTERNATIONAL</b>	<b>12,262</b>	<b>30,903</b>	<b>152.0%</b>	<b>155,588</b>	<b>261,015</b>	<b>67.8%</b>	<b>276,854</b>	<b>43.3%</b>
<b>TOTAL INTERNATIONAL PASSENGERS</b>	<b>26,297</b>	<b>61,812</b>	<b>135.1%</b>	<b>297,766</b>	<b>518,394</b>	<b>74.1%</b>	<b>552,037</b>	<b>47.7%</b>

\*Includes International

**SALT LAKE CITY INTERNATIONAL AIRPORT  
ELEVEN MONTHS ENDED NOVEMBER 2021  
Based on Total Enplanements**

**MARKET SHARE**

	November 2020	MARKET SHARE	November 2021	MARKET SHARE	YTD 2020	MARKET SHARE	YTD 2021	MARKET SHARE	12 MO ROLLING Ending 11/2020	12 MO ROLLING Ending 11/2021	MARKET SHARE
AEROMEXICO	-	0.00%	2,816	0.28%	11,436	0.20%	2,816	0.03%	15,352	2,816	0.03%
ALASKA	7,649	1.55%	21,338	2.13%	128,646	2.24%	257,251	2.53%	153,407	268,004	2.50%
AMERICAN	28,829	5.83%	51,509	5.15%	375,625	6.54%	643,468	6.32%	439,479	681,245	6.36%
DELTA	376,362	76.16%	758,628	75.83%	4,138,372	72.03%	7,401,307	72.73%	4,941,020	7,788,273	72.68%
FRONTIER	14,088	2.85%	14,103	1.41%	128,175	2.23%	214,748	2.11%	149,885	231,611	2.16%
JETBLUE	4,247	0.86%	15,250	1.52%	109,592	1.91%	177,719	1.75%	141,359	184,724	1.72%
SOUTHWEST	39,204	7.93%	98,938	9.89%	575,868	10.02%	1,017,913	10.00%	671,817	1,071,350	10.00%
UNITED	23,796	4.82%	37,911	3.79%	277,312	4.83%	460,605	4.53%	330,608	487,975	4.55%
Charters	-	0.00%	1	0.00%	255	0.00%	227	0.00%	386	227	0.00%
<b>TOTAL ENPLANEMENTS</b>	<b>494,175</b>	<b>100%</b>	<b>1,000,494</b>	<b>100%</b>	<b>5,745,281</b>	<b>100%</b>	<b>10,176,054</b>	<b>100%</b>	<b>6,843,313</b>	<b>10,716,225</b>	<b>100%</b>

**PERCENT CHANGE YOY**

	November 2020	November 2021	PERCENT CHANGE	YTD 2020	YTD 2021	PERCENT CHANGE	12 MO ROLLING Ending 11/2020	12 MO ROLLING Ending 11/2021	PERCENT CHANGE
AEROMEXICO	-	2,816	100.00%	11,436	2,816	100.00%	15,352	2,816	-81.66%
ALASKA	7,649	21,338	178.96%	128,646	257,251	99.97%	153,407	268,004	74.70%
AMERICAN	28,829	51,509	78.67%	375,625	643,468	71.31%	439,479	681,245	55.01%
DELTA	376,362	758,628	101.57%	4,138,372	7,401,307	78.85%	4,941,020	7,788,273	57.62%
FRONTIER	14,088	14,103	0.11%	128,175	214,748	67.54%	149,885	231,611	54.53%
JETBLUE	4,247	15,250	259.08%	109,592	177,719	62.16%	141,359	184,724	30.68%
SOUTHWEST	39,204	98,938	152.37%	575,868	1,017,913	76.76%	671,817	1,071,350	59.47%
UNITED	23,796	37,911	59.32%	277,312	460,605	66.10%	330,608	487,975	47.60%
Charters	-	1	#DIV/0!	255	227	-10.98%	386	227	-41.19%
<b>TOTAL ENPLANEMENTS</b>	<b>494,175</b>	<b>1,000,494</b>	<b>102.5%</b>	<b>5,745,281</b>	<b>10,176,054</b>	<b>77.1%</b>	<b>6,843,313</b>	<b>10,716,225</b>	<b>56.6%</b>

**SALT LAKE CITY INTERNATIONAL AIRPORT  
LANDING ACTIVITY  
ELEVEN MONTHS ENDED NOVEMBER 2021**

	November 2020	November 2021	CHANGE	YTD 2020	YTD 2021	CHANGE	12 MO ROLLING Ending 11/2021	% CHANGE
<b>TOTAL NUMBER OF LANDINGS</b>								
<b>SCHEDULED CARRIERS</b>								
AEROMEXICO	-	30	100.0%	109	30	-72.5%	30	-78.6%
ALASKA	21	97	361.9%	443	852	92.3%	873	72.9%
Horizon Air / Alaska	40	24	-40.0%	209	456	118.2%	503	124.6%
Skywest / Alaska	126	169	34.1%	1,660	2,352	41.7%	2,553	35.2%
AMERICAN	164	262	59.8%	2,488	3,677	47.8%	3,900	35.8%
Compass (American)	-	-	0.0%	102	-	-100.0%	-	-100.0%
Mesa Air (American)	14	1	-92.9%	14	165	1078.6%	167	1092.9%
Envoy Air (American)	-	22	100.0%	14	349	2392.9%	349	2226.7%
Republic/ (American)	-	-	0.0%	12	37	208.3%	37	208.3%
SkyWest (American)	162	186	14.8%	1,124	1,654	47.2%	1,799	45.8%
DELTA	3,703	4,312	16.4%	34,531	46,274	34.0%	50,072	29.3%
SkyWest (Delta Connection)	3,236	2,859	-11.7%	29,300	37,645	28.5%	41,044	24.7%
Compass (Delta Connection)	-	-	0.0%	1	-	-100.0%	-	-100.0%
FRONTIER	118	98	-16.9%	980	1,537	56.8%	1,664	48.8%
JETBLUE	60	121	101.7%	1,144	1,559	36.3%	1,644	18.3%
SOUTHWEST	516	850	64.7%	6,530	8,687	33.0%	9,151	25.8%
UNITED	84	82	-2.4%	1,065	1,499	40.8%	1,617	35.3%
GoJet	-	-	0.0%	-	-	0.0%	-	-100.0%
Express Jet	-	-	0.0%	10	-	-100.0%	-	-100.0%
Mesa / United Express	-	-	0.0%	98	280	185.7%	282	93.2%
Republic Airways Holdings	-	8	100.0%	32	57	78.1%	69	11.3%
SkyWest (United Express)	311	472	51.8%	2,873	4,899	70.5%	5,251	55.4%
Trans States	-	-	0.0%	-	-	0.0%	-	0.0%
<b>SUBTOTAL SCHEDULED CARRIERS:</b>	<b>8,555</b>	<b>9,593</b>	<b>12.1%</b>	<b>82,739</b>	<b>112,009</b>	<b>35.4%</b>	<b>121,005</b>	<b>29.7%</b>
<b>CHARTER CARRIERS</b>								
ALLEGIAN AIR	-	-	0.0%	-	-	0.0%	-	-100.0%
BOMBARDIER BUSINESS JETS	21	31	47.6%	450	603	34.0%	665	32.2%
BOUTIQUE AIR	-	-	0.0%	-	-	0.0%	-	0.0%
DELTA PRIVATE JETS	-	-	0.0%	-	-	0.0%	-	0.0%
EXECUTIVE JET MANAGEMENT	-	-	0.0%	-	-	0.0%	-	0.0%
FLIGHT OPTIONS	-	-	0.0%	-	-	0.0%	-	0.0%
KALITTA CHARTERS	5	4	-20.0%	59	80	35.6%	80	21.2%
KEYLIME AIR	-	-	0.0%	2	4	100.0%	4	100.0%
NETJETS	88	130	47.7%	1,318	1,962	48.9%	2,129	43.5%
SUNSET AVIATION	-	-	0.0%	-	-	0.0%	-	0.0%
SWIFT AIR	-	-	0.0%	-	-	0.0%	-	0.0%
VIRGIN AMERICA	-	-	0.0%	-	-	0.0%	-	0.0%
XOJET	17	12	-29.4%	213	157	-26.3%	157	-32.0%
OTHER CHARTER	-	-	0.0%	5	3	-40.0%	10	42.9%
<b>SUBTOTAL CHARTER CARRIERS:</b>	<b>131</b>	<b>177</b>	<b>35.1%</b>	<b>2,047</b>	<b>2,809</b>	<b>37.2%</b>	<b>3,045</b>	<b>32.9%</b>
<b>CARGO CARRIERS</b>								
AERO CHARTER & TRANSPORT	-	-	0.0%	-	-	0.0%	-	0.0%
AIRNET 11 LLC	-	6	100.0%	-	53	100.0%	53	100.0%
ALPINE AVIATION	154	226	46.8%	1,905	2,062	8.2%	2,213	5.9%
AMERIFLIGHT	113	22	-80.5%	1,310	969	-26.0%	1,147	-23.4%
AMERIJET INTERTIONAL	-	12	100.0%	-	-	0.0%	12	100.0%
CORPORATE AIR (BILLINGS)	120	132	10.0%	1,272	1,511	18.8%	1,667	18.0%
EMPIRE	15	16	6.7%	170	196	15.3%	216	16.8%
FEDERAL EXPRESS	152	142	-6.6%	1,687	1,621	-3.9%	1,852	-1.3%
GEM AIR	73	82	12.3%	599	632	5.5%	747	9.4%
NORTHERN AIR CARGO	-	22	100.0%	-	144	100.0%	144	100.0%
SOUTHERN AIR	-	-	0.0%	137	-	-100.0%	-	-100.0%
UPS	166	147	-11.4%	1,774	1,692	-4.6%	1,966	-1.4%
WESTERN AIR EXPRESS	39	45	15.4%	259	291	12.4%	319	21.8%
OTHER CARGO	2	1	-50.0%	20	22	10.0%	12	-40.0%
<b>SUBTOTAL CARGO CARRIERS:</b>	<b>834</b>	<b>853</b>	<b>2.3%</b>	<b>9,133</b>	<b>9,193</b>	<b>0.7%</b>	<b>10,348</b>	<b>1.7%</b>
<b>TOTAL LANDINGS</b>	<b>9,520</b>	<b>10,623</b>	<b>11.6%</b>	<b>93,919</b>	<b>124,011</b>	<b>32.0%</b>	<b>134,398</b>	<b>27.1%</b>
<b>TOTAL LANDED WEIGHT</b>								
<b>SCHEDULED CARRIERS</b>								
AEROMEXICO	-	2,843,940	100.0%	10,355,000	2,843,940	-72.5%	2,843,940	-78.6%
ALASKA	3,239,900	14,710,324	354.0%	67,273,524	129,501,494	92.5%	132,618,094	73.0%
Horizon Air / Alaska	2,998,280	1,798,968	-40.0%	15,666,013	34,180,392	118.2%	37,703,371	124.6%
Skywest / Alaska	9,444,582	12,667,733	34.1%	124,428,620	176,298,864	41.7%	191,365,221	35.2%
AMERICAN	24,627,176	41,508,536	68.5%	369,042,258	596,371,546	61.6%	631,695,590	48.4%
Compass	-	-	0.0%	7,644,900	-	-100.0%	-	-100.0%
Envoy Air (American)	-	1,646,260	100.0%	1,049,300	26,152,270	2392.4%	26,152,270	2226.2%
American/Mesa Air	1,043,400	73,500	-93.0%	1,043,400	12,209,100	1070.1%	12,359,300	1084.5%
Republic (American)	-	-	0.0%	899,400	2,773,150	208.3%	2,773,150	208.3%
SkyWest (American)	10,854,000	12,879,250	18.7%	75,308,000	112,023,500	48.8%	121,738,500	47.2%
DELTA	590,724,252	696,722,615	17.9%	5,374,634,121	7,572,472,333	40.9%	8,183,138,560	35.4%
SkyWest (Delta Connection)	221,084,270	192,487,142	-12.9%	1,972,541,793	2,497,333,639	26.6%	2,723,936,353	23.3%
Compass (Delta Connection)	-	-	0.0%	75,177	-	-100.0%	-	-100.0%
FRONTIER	16,779,364	15,548,004	-7.3%	138,940,330	228,133,592	64.2%	246,485,938	54.6%
JETBLUE	8,532,000	17,206,200	101.7%	162,676,800	221,689,800	36.3%	233,776,800	18.3%

**SALT LAKE CITY INTERNATIONAL AIRPORT  
LANDING ACTIVITY  
ELEVEN MONTHS ENDED NOVEMBER 2021**

	November 2020	November 2021	CHANGE	YTD 2020	YTD 2021	CHANGE	12 MO ROLLING Ending 11/2021	% CHANGE
SOUTHWEST	67,360,000	114,874,400	70.5%	860,304,000	1,173,827,200	36.4%	1,234,291,200	28.8%
UNITED	11,907,260	11,301,960	-5.1%	151,392,580	211,797,240	39.9%	228,615,620	34.6%
GoJet	-	-	0.0%	-	-	0.0%	-	-100.0%
Express Jet	-	-	0.0%	750,000	-	-100.0%	-	-100.0%
Mesa / United Express	-	-	0.0%	7,350,000	21,000,000	185.7%	21,150,000	93.2%
Republic Airways Holdings	-	600,000	100.0%	2,318,986	4,223,361	82.1%	5,101,761	13.1%
SkyWest (United Express)	20,346,034	31,105,723	52.9%	197,391,666	343,708,309	74.1%	366,691,881	58.1%
Trans States	-	-	0.0%	-	-	0.0%	-	0.0%
<b>SUBTOTAL SCHEDULED CARRIERS:</b>	<b>988,940,518</b>	<b>1,167,974,555</b>	<b>18.1%</b>	<b>9,541,085,868</b>	<b>13,366,539,730</b>	<b>40.1%</b>	<b>14,402,437,549</b>	<b>33.9%</b>
<b>CHARTER CARRIERS</b>								
ALLEGIAN AIR	-	-	0.0%	-	-	0.0%	-	-100.0%
BOMBARDIER	591,259	1,022,153	72.9%	14,967,321	20,108,021	34.3%	22,144,105	31.5%
BOUTIQUE AIR	-	-	0.0%	-	-	0.0%	-	0.0%
DELTA PRIVATE JETS	-	-	0.0%	-	-	0.0%	-	0.0%
EXECUTIVE JET MANAGEMENT	-	-	0.0%	-	-	0.0%	-	0.0%
FLIGHT OPTIONS	-	-	0.0%	-	-	0.0%	-	0.0%
KALITTA CHARTERS	77,900	168,300	116.0%	1,190,240	2,098,120	76.3%	2,594,420	71.3%
KEYLIME AIR	-	-	0.0%	63,448	131,526	107.3%	131,526	107.3%
MIAMI AIR	-	-	0.0%	438,900	-	-100.0%	-	-100.0%
NETJETS	2,439,332	4,060,141	66.4%	39,588,589	60,969,002	54.0%	65,982,653	47.7%
SIERRA PACIFIC	-	-	0.0%	220,000	330,000	50.0%	330,000	50.0%
SUN COUNTRY	-	-	0.0%	-	-	0.0%	-	0.0%
SWIFT AIR	-	-	0.0%	-	-	0.0%	-	0.0%
VIRGIN AMERICA	-	-	0.0%	-	-	0.0%	-	0.0%
XOJET	561,300	487,300	-13.2%	7,855,200	6,180,750	-21.3%	6,180,750	-27.6%
OTHER CHARTER	-	-	0.0%	-	-	0.0%	-	0.0%
<b>SUBTOTAL CHARTER CARRIERS:</b>	<b>3,669,791</b>	<b>5,737,894</b>	<b>56.4%</b>	<b>64,323,698</b>	<b>89,817,419</b>	<b>39.6%</b>	<b>97,363,454</b>	<b>34.4%</b>
<b>CARGO CARRIERS</b>								
ABX AIR INC	-	-	0.0%	-	1,371,000		1,371,000	100.0%
AIRNET 11	-	91,800	100.0%	-	821,400	100.0%	821,400	100.0%
ALPINE AVIATION	2,177,800	3,149,800	44.6%	26,650,900	28,658,600	7.5%	30,964,900	5.8%
AMERIFLIGHT	1,476,500	359,094	-75.7%	18,848,550	13,050,376	-30.8%	15,285,776	-29.1%
AMERIJET INTERNATIONAL	-	3,264,000	100.0%	-	3,264,000	100.0%	3,264,000	100.0%
AMERISTAR	-	-	0.0%	299,700	54,600	-81.8%	54,600	-81.8%
ATLAS AIR	544,000	326,000	-40.1%	4,437,000	870,000	-80.4%	1,414,000	-68.1%
CORPORATE AIR (BILLINGS)	1,020,000	1,122,000	10.0%	10,812,000	12,843,500	18.8%	14,169,500	18.0%
EMPIRE	695,107	753,088	8.3%	6,342,784	8,465,757	33.5%	9,407,117	33.7%
FEDEX EXPRESS	50,556,600	48,845,700	-3.4%	562,084,100	555,303,800	-1.2%	632,479,800	1.0%
GEM AIR	605,500	682,000	12.6%	5,037,500	5,333,000	5.9%	6,282,000	9.6%
NORTHERN AIR CARGO	-	2,662,000	100.0%	-	17,424,000	100.0%	17,424,000	100.0%
SOUTHERN AIR INC	-	-	0.0%	16,634,980	-	-100.0%	-	-100.0%
UPS	49,807,620	50,024,180	0.4%	503,339,740	505,841,240	0.5%	596,598,540	2.8%
WESTERN AIR EXPRESS	512,000	598,000	16.8%	3,379,000	3,853,500	14.0%	4,210,700	23.2%
OTHER CARGO	-	-	0.0%	-	-	0.0%	-	0.0%
<b>SUBTOTAL CARGO CARRIERS:</b>	<b>107,395,127</b>	<b>111,877,662</b>	<b>4.2%</b>	<b>1,157,866,254</b>	<b>1,157,154,773</b>	<b>-0.1%</b>	<b>1,333,747,333</b>	<b>1.9%</b>
<b>TOTAL LANDED WEIGHT</b>	<b>1,100,005,436</b>	<b>1,285,590,111</b>	<b>16.9%</b>	<b>10,763,275,820</b>	<b>14,613,511,922</b>	<b>35.8%</b>	<b>15,833,548,336</b>	<b>30.4%</b>

**SALT LAKE CITY INTERNATIONAL AIRPORT  
CARGO ACTIVITY REPORT  
ELEVEN MONTHS ENDED NOVEMBER 2021**

	November 2020	November 2021	CHANGE	YTD 2020	YTD 2021	CHANGE	12 MO ROLLING Ending 11/2021	% CHANGE
<b>ENPLANED CARGO</b>								
<b>PASSENGER CARRIERS</b>								
ALASKA	6,000	6,461	7.68%	104,764	93,234	-11.01%	101,722	-18.50%
Horizon Air / Alaska	1,427	-	-100.00%	17,108	10,492	-38.67%	11,540	-33.16%
Skywest / Alaska	5,455	939	-82.79%	117,921	28,262	-76.03%	36,550	-69.38%
AMERICAN	2,966	6,908	132.91%	99,541	54,469	-45.28%	58,865	-50.41%
American Eagle/Republic	-	-	0.00%	-	140	100.00%	140	100.00%
Compass	-	-	0.00%	120	-	-100.00%	-	-100.00%
Envoy Air (American)	-	-	0.00%	-	464	100.00%	464	100.00%
Mesa	-	-	0.00%	-	293	100.00%	293	100.00%
SkyWest (American)	1,898	1,621	-14.59%	407,069	12,697	-96.88%	14,624	-96.42%
DELTA	310,578	571,374	83.97%	4,053,132	6,470,062	59.63%	6,873,321	42.36%
SOUTHWEST	260,288	380,522	46.19%	2,121,379	3,390,482	59.82%	3,557,189	51.14%
UNITED	6,298	12,147	92.87%	55,285	87,852	58.91%	96,864	35.13%
Others	-	9,257	100.00%	44,293	119,699	170.24%	132,252	58.32%
<b>CARGO CARRIERS</b>								
FEDEX EXPRESS*	9,716,496	8,914,790	-8.25%	107,496,592	104,874,995	-2.44%	117,507,718	-0.57%
GEM AIR	80,944	76,432	-5.57%	854,779	706,574	-17.34%	825,357	-13.31%
SOUTHERN AIR	-	-	0.00%	251,000	-	-100.00%	-	-100.00%
UPS	5,794,625	5,476,444	-5.49%	60,664,287	58,764,785	-3.13%	68,000,665	-0.72%
MISC CARGO	938,593	1,164,575	24.08%	10,704,329	12,002,293	12.13%	13,156,716	11.92%
ABX AIR	-	-	0.00%	-	81,293	100.00%	81,293	100.00%
<b>TOTAL ENPLANED CARGO</b>	<b>17,125,568</b>	<b>16,621,470</b>	<b>-2.94%</b>	<b>186,991,599</b>	<b>186,616,793</b>	<b>-0.20%</b>	<b>210,374,280</b>	<b>1.26%</b>
<b>DEPLANED CARGO</b>								
<b>PASSENGER CARRIERS</b>								
ALASKA	5,161	10,656	106.47%	62,210	153,227	146.31%	155,254	112.27%
Horizon Air / Alaska	2,394	1,525	-36.30%	24,769	17,434	-29.61%	18,960	-23.73%
Skywest / Alaska	2,865	3,039	6.07%	88,178	76,032	-13.77%	82,740	-15.26%
AMERICAN	39,416	32,994	-16.29%	257,781	328,966	27.61%	350,997	26.08%
American Eagle/Republic	-	-	0.00%	-	7	100.00%	7	100.00%
Compass	-	-	0.00%	187	-	-100.00%	-	-100.00%
Envoy	-	350	100.00%	-	1,994	100.00%	1,994	100.00%
Mesa (American)	-	-	0.00%	-	378	100.00%	378	100.00%
SkyWest (American)	1,532	1,360	-11.23%	10,595	11,174	5.46%	13,634	22.27%
DELTA	417,895	861,050	106.04%	5,530,466	9,530,468	72.33%	10,047,856	55.37%
SOUTHWEST	311,454	430,568	38.24%	3,015,048	4,416,478	46.48%	4,786,563	40.55%
UNITED	15,796	47,310	199.51%	130,628	311,071	138.14%	330,738	86.37%
Others	7,919	24,457	208.84%	149,231	228,517	53.13%	322,106	48.92%
<b>CARGO CARRIERS</b>								
FEDEX EXPRESS*	8,604,178	8,650,512	0.54%	92,813,001	95,109,728	2.47%	105,841,058	3.88%
GEM AIR	19,305	17,206	-10.87%	239,848	237,442	-1.00%	258,724	2.38%
SOUTHERN AIR	-	-	0.00%	1,688,688	-	-100.00%	-	-100.00%
UPS	7,080,724	6,420,315	-9.33%	78,883,707	65,914,956	-16.44%	75,311,535	-14.67%
MISC CARGO	512,442	1,084,064	111.55%	4,534,093	6,316,687	39.32%	6,992,350	42.44%
ABX AIR	-	-	0.00%	-	316,366	100.00%	316,366	100.00%
<b>TOTAL DEPLANED CARGO</b>	<b>17,021,081</b>	<b>17,585,406</b>	<b>3.32%</b>	<b>187,428,430</b>	<b>182,654,559</b>	<b>-2.55%</b>	<b>204,514,894</b>	<b>-1.65%</b>
<b>TOTAL CARGO</b>	<b>34,146,649</b>	<b>34,206,876</b>	<b>0.18%</b>	<b>374,420,029</b>	<b>369,271,352</b>	<b>-1.38%</b>	<b>414,889,174</b>	<b>-0.20%</b>

\*FEDEX EXPRESS includes mail



Salt Lake City  
Department of Airports

**COMPARISON OF ON TIME OPERATIONS**  
October 2021

**ARRIVALS**

Airport	Flights	% On Time	Rank
MSP MINNEAPOLIS-ST. PAUL INTL	11,038	88.0	1
ATL HARTSFIELD-JACKSON ATLANTA INTL	27,978	87.8	2
LGA NEW YORK LAGUARDIA	9,481	87.8	3
CLT CHARLOTTE DOUGLAS	20,411	87.3	4
HNL HONOLULU	4,374	86.7	5
DTW DETROIT METRO WAYNE CNTY	11,683	85.2	6
DCA RONALD REAGAN NATIONAL	8,538	85.0	7
JFK NEW YORK JFK INTL	7,830	85.0	8
SEA SEATTLE-TACOMA INTL	15,072	84.8	9
BOS BOSTON LOGAN INTL	9,888	83.9	10
PHL PHILADELPHIA INTL	10,283	83.6	11
<b>SLC SALT LAKE CITY INTL</b>	<b>10,578</b>	<b>82.8</b>	<b>12</b>
PDX PORTLAND INTL	5,081	81.3	13
IAH HOUSTON GEORGE BUSH	14,818	80.8	14
DEN DENVER INTL	24,194	80.7	15
MIA MIAMI INTL	8,289	80.2	16
EWB NEWARK LIBERTY INTERNATIONAL	10,624	79.6	17
IAD WASHINGTON DULLES	8,244	79.3	18
SFO SAN FRANCISCO INTL	10,322	78.9	19
TPA TAMPA INTL	5,662	78.9	20
MCO ORLANDO INTL	11,691	78.8	21
FLL FT. LAUDERDALE	7,174	78.4	22
ORD CHICAGO O HARE	29,759	78.1	23
DFW DALLAS-FT. WORTH REGIONAL	24,972	77.9	24
LAX LOS ANGELES INTL	17,026	77.8	25
SAN SAN DIEGO LINDBERGH FIELD	6,397	77.3	26
BWI BALTIMORE/WASHINGTON INTL	7,088	76.4	27
PHX PHOENIX SKY HARBOR INTL	14,746	76.2	28
LAS LAS VEGAS MCCARRAN INTL	14,213	73.9	29
MDW CHICAGO MIDWAY	6,119	73.4	30
<b>AVERAGES</b>	<b>12,452</b>	<b>81.2</b>	

**DEPARTURES**

Airport	Flights	% On Time	Rank
HNL HONOLULU	4,375	91.3	1
MSP MINNEAPOLIS-ST. PAUL INTL	11,032	88.4	2
LGA NEW YORK LAGUARDIA	9,476	87.6	3
JFK NEW YORK JFK INTL	7,838	86.9	4
DCA RONALD REAGAN NATIONAL	8,345	86.0	5
BOS BOSTON LOGAN INTERNATIONAL	9,789	85.9	6
PDX PORTLAND INTERNATIONAL	5,082	85.7	7
PHL PHILADELPHIA INTL	8,474	85.5	8
DTW DETROIT METRO WAYNE CNTY	11,491	85.3	9
ATL HARTSFIELD-JACKSON ATLANTA INTL	27,970	84.7	10
CLT CHARLOTTE DOUGLAS	18,457	84.7	11
SEA SEATTLE-TACOMA INTL	15,068	84.2	12
IAD WASHINGTON DULLES	5,601	83.6	13
<b>SLC SALT LAKE CITY INTL</b>	<b>10,581</b>	<b>83.1</b>	<b>14</b>
TPA TAMPA INTERNATIONAL	5,659	81.5	15
SFO SAN FRANCISCO INTL	10,324	80.8	16
IAH HOUSTON GEORGE BUSH	12,658	79.0	17
EWB NEWARK LIBERTY INTERNATIONAL	9,006	78.8	18
SAN SAN DIEGO LINDBERGH FIELD	6,393	78.4	19
MIA MIAMI INTL	8,285	77.6	20
ORD CHICAGO O HARE	25,293	77.6	21
LAX LOS ANGELES INTL	17,041	76.9	22
MCO ORLANDO INTL	11,690	76.6	23
FLL FT. LAUDERDALE	7,167	76.3	24
DFW DALLAS-FT. WORTH REGIONAL	24,963	74.8	25
DEN DENVER INTERNATIONAL	23,502	73.3	26
PHX PHOENIX SKY HARBOR INTL	14,748	70.3	27
LAS LAS VEGAS MCCARRAN INTL	14,208	68.2	28
BWI BALTIMORE/WASHINGTON INTL	7,090	62.0	29
MDW CHICAGO MIDWAY	6,121	60.1	30
<b>AVERAGES</b>	<b>11,924</b>	<b>79.8</b>	

**ON TIME ARRIVAL PERFORMANCE AT SLC**

By Carrier

Air Carrier	Flights	% On Time
DL DELTA	7,731	86.8%
F9 FRONTIER	113	85.8%
UA UNITED	662	81.3%
B6 JETBLUE	153	78.4%
AS ALASKA	315	77.5%
AA AMERICAN	646	69.0%
WN SOUTHWEST	958	62.4%
	<b>9,416</b>	<b>91.9%</b>

Source: DOT Air Travel Consumer Report

# **DESIGN AND CONSTRUCTION REPORT**

## TABLE OF CONTENTS

- I. Area Map of Project Locations
- II. Project Schedule
- III. Construction Analysis
- IV. Design and Construction Report





Salt Lake City  
International Airport

### 2021 - 2022 Project Legend

#### Airfield

1. T/W G Centerline PCC Panel Replacement
2. North Cargo Apron Site Development

#### Landside

3. Electric Vehicle Charging Stations
4. Economy Parking Lot Bus Route Reconfiguration
5. GA Zone 3 Corporate Hangar Site Development
6. Landside Lighting Wire Replacement



SALT LAKE CITY INTERNATIONAL AIRPORT  
CONSTRUCTION PROGRAM  
2021/2022 Construction Schedule

ID	Task Name	Start	Finish	Sep '21	Oct '21	Nov '21	Dec '21	Jan '22	Feb '22	Mar '22	Apr '22	M
1	<b>Project Title</b>	<b>Sun 6/16/19</b>	<b>Fri 9/16/22</b>									
2	(1) T/W G Centerline PCC Panel Replacement	Mon 5/24/21	Mon 11/22/21									
3	(2) North Cargo Apron Site Development	Mon 8/23/21	Fri 9/16/22									
4	(3) Electric Vehicle Charging Stations	Sun 6/16/19	Wed 11/10/21									
5	(4) Economy Parking Lot Bus Route Reconfiguraion	Mon 5/17/21	Mon 11/29/21									
6	(5) GA Zone 3 Corportate Hangar Site Development	Sat 1/8/22	Mon 6/6/22									
7	(6) Landside Lighting Wire Replacement	Mon 4/11/22	Wed 9/7/22									

Project: Microsoft Project (latest) Date: Tue 1/11/22	DESIGN		Inactive Milestone		Manual Summary	
	CONSTRUCTION		Inactive Summary		Start-only	
	SCOPING		Manual Task		Finish-only	
	SUMMARY		Duration-only		Deadline	
	Inactive Task		Manual Summary Rollup			

SALT LAKE CITY DEPARTMENT OF AIRPORTS  
CONSTRUCTION PROJECT STATUS 2021 - 2022

#	PROJECT NAME	ENGINEER'S ESTIMATE	BID AMOUNT	APPROVED CHANGE ORDERS TO DATE	% OF COST INCREASE TO DATE	STATUS	CONTRACTOR
<b>CONSTRUCTION</b>							
1	Taxiway G Centerline PCC Panel Replacement	\$ 2,235,325	\$ 2,347,930	\$ 40,218	1.71%	complete	Ames Construction
2	North Cargo Apron Site Development	\$ 25,763,000	\$ 22,141,148	\$ (15,000)	-0.07%	on schedule	Ames Construction
3	Electric Vehicle Charging Stations	\$ 291,764	\$ 360,000	\$ 4,275	1.19%	complete	Saunders Construction
4	Economy Parking Lot Bus Route Reconfiguration	\$ 1,824,590	\$ 1,775,112	\$ (250,764)	-14.13%	complete	Cal Wadsworth Construction
5	GA Zone 3 Corporate Hangar Site Development	\$ 1,213,237	\$ 1,169,378			on schedule	Ames Construction
6	Landside Lighting Wire Replacement	\$ 1,353,672	\$ 815,689			award process	Prime Power & Electric, Inc.
	<b>Total</b>	<b>\$ 32,681,588</b>	<b>\$ 28,609,257</b>	<b>\$ (221,271)</b>	<b>-0.77%</b>		
Budget amount, Engineer's estimate, and Bid amount is based on construction cost only.							

## CONSTRUCTION REPORT

### CONSTRUCTION

- (1) **Taxiway G Centerline PCC Panel Replacement** - The Contractor was issued substantial completion on November 22, 2021. Punch list work is weather and temperature dependent and will require being completed in the spring.
- (2) **North Cargo Apron Site Development** - The Contractor has placed engineered fill in the future apron area. Work will continue as acceptable weather allows. Most of the sanitary sewer utility work has been installed and work has begun on the storm water drainage system. Work will continue through the winter months as weather allows.
- (3) **Electric Vehicle Charging Stations** - The Contractor was issued substantial completion on November 10, 2021. All punch list items have been completed.
- (4) **Economy Parking Lot Bus Route Reconfiguration** - The Contractor was issued substantial completion on November 29, 2021. Punch list items are nearing completion.
- (5) **GA Zone 3 Corporate Hangar Site Development** - The Contractor, Ames Construction was issued a notice to proceed on January 8, 2022. A pre-construction meeting is scheduled to take place on January 12, 2022.
- (6) **Landside Lighting Wire Replacement** - The bid opening for this project was held on December 16, 2021. The apparent low bidder is Prime Power and Electric Inc. Contract documents are currently being prepared.



Advisory Board  
Meeting

January 19, 2022

Media Clippings

<https://slcairport.com/assets/pdfDocuments/AABoard/JanuaryClippingPacket2022.pdf>

Compiled by the Communication & Marketing Dept.