



Advisory Board
Meeting

January 20, 2021

Agenda



Advisory Board Meeting

January 21, 2021

This meeting will be an electronic meeting pursuant to Title 52, Chapter 4, as amended June 25, 2020, without an anchor location, based on the attached written statement from Board Chair Cyndy Miller.

To access the meeting please visit:

<https://saltlakecity.webex.com/saltlakecity/onstage/g.php?MTID=e7635fb99680b0773eca5e3671e6a37e9>



ADVISORY BOARD MEETING AGENDA

20 January 2021

8:00 A.M.

CONSENT

- A. Minutes of the 18 November 2020 Meeting

DISCUSSION

- A. Director's Report – Bill Wyatt, Executive Director, SLCDA
- B. Airport Redevelopment Program (ARP) Update – Mike Williams, ARP Director, SLCDA
- C. Airport Revenue Short-Term Revolving Obligations– Brian Butler, Chief Financial Officer, SLCDA
- D. Motion to Approve Audited Financials
- E. Election of Board Chair and Vice-Chair

INFORMATION ITEMS

Financial Report – November 2020
Air Traffic Statistics – November 2020
Construction Report – January 2021

MEDIA CLIPPINGS

Media Clippings – January 2021

The next meeting will be held on **Wednesday, February 17, 2021**, at 8:00 a.m. Meetings are usually held in the Board Room unless otherwise posted. People with disabilities may make requests for reasonable accommodations no later than 48 hours in advance in order to attend this [Airport Advisory Board Meeting](#). Accommodations may include alternate formats, interpreters, and other auxiliary aids. This is an accessible facility. For questions or additional information, please contact [Tina Nee](#) at [801-575-2042](tel:801-575-2042).



Advisory Board
Meeting

January 20, 2021

Minutes

SALT LAKE CITY DEPARTMENT OF AIRPORTS MINUTES OF ADVISORY BOARD MEETING

November 18, 2020

Members Present: Cyndy Miller, Chair
 Steve Price
 Larry Pinnock
 Theresa Foxley
 Arlyn Bradshaw
 Karen Mayne
 Roger Boyer
 Dirk Burton

Mayor's Office: Rachel Otto

City Council Office: James Rogers
 Russell Weeks

Department of Airports: Bill Wyatt, Executive Director
 Tina Nee, Administration
 Kevin Robins, Director of Engineering
 Treber Anderson, Acting Director of Operations
 Ed Cherry, Director of IT
 Ed Clayson, Director of Maintenance
 Shane Andreasen, Director Admin and Commercial Services
 Medardo Gomez, ORAT Director
 Brady Fredrickson, Director of Planning and Environmental
 Pete Higgins, Chief Operations Officer
 Mike Williams, ARP Program Director
 Stefhan Bennett, SLC Police Captain
 Nancy Volmer, Communication and Marketing Director
 Catherine Brabson, City Attorney
 Marco Kunz, City Attorney
 Joel Nelson, Admin and Commercial Services
 Nate Lavin, Communication and Marketing
 Jasen Asay, Communication and Marketing

Other: Steve Domino, RS&H
 Lee Davidson, Salt Lake Tribune
 Robert Bergman, Lobbyist
 Jared Esselman, UDOT
 Ann Thorvik, Chrysalis
 Andrew Scanlon, Kimley-Horn
 Paul Coates, City of West Jordan
 Brian Bangerter, HNTB

Kory Cox, HDR, Inc.
Andy C
Jim Lohse, FFKR
Mike Taylor, Budget Rent-A-Car
Arrin Holt, FKKR

Cyndy Miller called the meeting, held via Web-Ex to order at 8:02 a.m.

AGENDA

A. Minutes

A motion was made by Larry Pinnock and seconded by Dirk Burton to approve the minutes of October 21, 2020 as presented. All votes were affirmative; motion passed.

B. Director's Report

Bill Wyatt, Executive Director, updated the Airport Advisory Board regarding current events.

Bill Wyatt provided a brief update on passenger volumes, financial position, and construction.

Mr. Pinnock inquired to Delta's financial position.

Mr. Wyatt indicated hopefully Delta will be even by the first of the year. They are continuing to block middle seat sales until February 1.

Mr. Boyer stated it is a long walk to the north concourse.

Mr. Wyatt indicated this is a topic of conversation right now. The new airport was designed in 2012/2013 and the decision was made to use moving walks over electric carts. The airline consortium (SLATEC) has a Request for Proposal for a wheelchair provider.

Mayor Burton asked how the TRAX line is currently working.

Mr. Wyatt explained the new platform has been built and it's still about three additional months for the track to be completed. Passenger are exit TRAX at the temporary platform and bus over to the new terminal.

C. Airport Redevelopment Program (ARP) Update – Mike Williams, ARP Director, SLCDA

Mike Williams, Airport Redevelopment Program (ARP) Director, presented an update on the ARP (presentation on file). Main points included were:

- Project statistics
- Safety and Schedule Stats, and Cost Summary

- Project statistics
- CGMP #5 – Terminal/South Concourse West/Gateway status
- CGMP #6 – Roadways/Parking Garage/Central Utility Plant status
- CGMP #7 – Baggage Handling System status
- CGMP #9A – SCW Apron Paving and Hydrant Fueling status
- CGMP #16 – NCP Phase 1
- CGMP #17 – NCP Baggage Handling System Phases 1 & 2 status
- CGMP #18 – NCP Apron Paving/ Hydrant Fueling
- Tracking Budget
- Job progress photos

There were no questions for Mike Williams.

D. Master Plan Update – Brady Fredrickson, Planning Director

Brady Fredrickson, Planning Director, presented an update on the Master Plan (presentation on file). Main points included were:

- Schedule
- Total Operation PALs
- Critical Aircraft
- Runway Length
- Airfield Capacity & Delay
- 2017 Design Day Flight Schedule
- 2037 Design Day Flight Schedule
- Simulations on Runway Use
- Original Runway Use Simulation Findings
- Simulations on Revised Runway Use
- Simulation Findings – Annualized Delays
- Preliminary Airfield Alternatives
- Safety – Runway 14-32 Hot Spots
- LOS Runway Extension to 14,500'
- Increasing Capacity – Runways
- Annual Passenger PALs
- Roads Future LOS
- Curb Roads Future LOS
- Parking Space Requirements
- Rental Car Space Requirements
- Next Steps

Mr. Price inquired to the solutions to Hot Spots 1 and 2.

Mr. Fredrickson answered the FAA has indicated the airport is required to fix the issue and it is the highest priority of the master plan.

E. Nominations of Board Chair and Vice-Chair

Cyndy Miller opened the floor for nominations for Chair.

Roger Boyer nominated Steve Price as Airport Advisory Board Chair for 2021. A motion was made by Larry Pinnock and seconded by Mayor Burton that nominations for Board Chair be closed. All votes were affirmative; motion passed.

Cyndy Miller opened the floor for nominations for Vice-Chair.

Larry Pinnock nominated Theresa Foxley as Airport Advisory Board Vice-Chair for 2021. A motion was made by Roger Boyer and seconded by Steve Price that nominations for Board Vice-Chair be closed. All votes were affirmative; motion passed.

Voting by acclamation will be conducted at the January Advisory Board meeting, scheduled for 20 January 2021.

Cyndy Miller adjourned the meeting at 9:19 a.m.

Cynthia Miller, Chair

Date

Erin Mendenhall, Mayor

Date



Advisory Board
Meeting

January 20, 2021

Discussion Items

Airport Advisory Board Nominations and Elections Protocol

Nominations for Officers

Nominations are made during the last scheduled Board meeting of that calendar year, typically in November or December.

First, the Board Chair opens the floor to nominations for Chair:

“Nominations are now open for Board Chair for Calendar Year _____”

After nominations are complete or appear to be complete, a Board Member should make this motion:

“I move that nominations for Board Chair be closed.”

The Board Chair then asks for consent:

“A motion has been made to close the floor to nominations for Chair. All in favor say ‘aye.’ Opposed? The motion carries.”

Next, the Board Chair opens the floor to nominations for Vice-Chair:

“Nominations are now open for Board Vice-Chair for Calendar Year _____”

After nominations are complete or appear to be complete, a Board Member should make this motion:

“I move that nominations for Board Vice-Chair be closed.”

The Board Chair then asks for consent:

“A motion has been made to close the floor to nominations for Vice-Chair. All in favor say ‘aye.’ Opposed? The motion carries.”

The Board Chair should then state that elections will be held at the regularly scheduled January Board meeting.

Elections

At the January meeting, the Board Chair calls for a vote, reminding members of who was nominated. If only one person was nominated for Chair and one for Vice-Chair, the Board Chair only needs to ask for a **“Vote by Acclamation.”** If more than one person was nominated for either office, the Board Chair calls for a vote. The new Chair and Vice-Chair take office at the February meeting.

AGENDA: DISCUSSION ITEM (A)
DATE: 20 January 2021
TO: Airport Advisory Board
FROM: Bill Wyatt, Executive Director
SUBJECT: **Executive Director's Report**

Bill Wyatt will present a monthly informational report to the Board, which may include:

1. ARP progress
2. Ground transportation update
3. Concessions and rental cars
4. Airport safety and security
5. Airport facilities and operations
6. General aviation
7. Passenger and airport users
8. Environmental matters
9. Financial condition
10. Legislative issues
11. Airlines
12. Communications and marketing

AGENDA: DISCUSSION ITEM (B)
DATE: 20 January 2021
TO: Airport Advisory Board
FROM: Bill Wyatt, Executive Director
SUBJECT: **Airport Redevelopment Program Update**

Mike Williams, Airport Redevelopment Program (ARP) Director, will present an update on the SLC Airport Redevelopment Program (presentation on file).

Airport Redevelopment Program

Status Update: 01-20-2021



Salt Lake City International Airport



Safety, Schedule Status and Cost Summary

Safety (Numbers for the Current Month)

- **OSHA National Average**
 - Lost Time Rate 1.80 Recordable Rate 3.10
- **TRP Metrics**
 - 8,212,172 Total Manhours worked
 - Lost Time Rate 0.24 Recordable Rate 2.11
- **NCP Metrics**
 - 2,161,034 Total Manhours worked
 - Lost Time Rate 0.09 Recordable Rate 1.11

Schedule – Construction Activity on Critical Path

- Excavation of the Central Tunnel and Tie-Back Installation
- Existing Facility Demolition and Debris Removal
- Start of South Concourse East Foundation Stone Column and Pile Driving Activities
- Overall Program is on schedule

Airport Redevelopment Program Budget Summary Status

- Total ARP Budget: \$ 4,100,509,714
- ARP Budget Commitment: \$ 3,578,463,003
- ARP Estimate At Completion: \$ 4,100,509,714
- ARP Invoiced to date: \$ 2,751,784,333



Project Statistics

TRP/NCP Trade Staffing					
Trade Workers 382 on -1/08/2021 (102 Nights and 280 Days)					
10,373,206 Hours Worked as of 12/31/2020					

Contract Local/Non-Local Awarded Statistics

Local Trades	Dollar Value	Trade Count	Percentage
Total Local (Wasatch Front) Contractors	\$1,359,453,965	124	67%
Total Out of State Contractors	\$672,091,052	29	33%
Total Contract Awards	\$2,031,545,017	153	100%

Contract Union/Merit Shop Awarded Statistics

Union Trades	Dollar Value	Trade Count	Percentage
Total Union Contractors	\$698,423,765	36	34%
Total Merit Shop Contractors	\$1,333,121,252	117	66%
Total Contract Awards	\$2,031,545,017	153	100%



Post Opening Day Special Projects

- **Passenger Board Bridge Comfort**
 - Scope is to Temper the Air with both Heating and Cooling at all Gates
 - Installation May through July
- **Passenger Boarding Bridge Motorized Baggage Conveyors**
 - Motorized Baggage Conveyors that Replace the Manual Slides and the ‘Bag Buddies’ (Elevators for Planeside Bags) at all Gates
 - Installation May through June
- **Wayfinding Signage**
 - Roadway Overhead Signs – Complete
 - Roadway Digital Signs – 01/31/2021
 - Rental Car Return and other Related Signage – 01/31/2021
 - Terminal/Concourses – First Round Complete 02/15/2021
 - Terminal Concourses – Second Round – Identified on Walk 01/08/2021
- **Concourse ‘A’ Trailers for Breakroom Space (due to Rephasing)**
 - Mobilization – 02/22/2021
 - Operational - 03/19/2021



Legacy Airport Demolition – CGMP# 12 - \$35.8 mil

- **Accelerated Program**
- Original Program – Phased 55 Month Demolition Schedule with 29.5 months of Active Demolition
- Accelerated Program – All Facility Demolition Complete in 8 Months
- **Concourse D and IAB**
 - IAB Demolition Complete
 - Concourse ‘D’ Demolition Complete
- **Parking Garage**
 - Demolition Target Complete 02/15/2021
- **Terminal 1 and Terminal 2**
 - Terminal 2 Demolition Complete 04/01/2021
 - Terminal 1 Demolition Complete 05/18/2021
- **Concourse C, F and G**
 - Concourse ‘G’ Demolition Complete 03/09/2021
 - Concourse ‘F’ Demolition Complete 03/29/2021
 - Concourse ‘C’ Demolition Complete 04/01/2021



Concourse 'A' East/Central Tunnel – CGMP# 10 - \$397.3 mil

- **Central Tunnel Concrete Structure**

- Excavation Underway
- Current Depth of Excavation 20ft
- Start Subgrade Preparation – 03/05/2021

- **Concourse 'A' East**

- Start Stone Columns – 03/02/2021
- Start Driven Piles – 03/11/2021



Apron and Taxiway Paving – CGMP# 11/11A - \$191.2 mil

– Hydrant Fuel System

- Fuel Pipe along West Side of Central Tunnel underway
- Fuel Vault near Legacy IAB underway

– Apron Paving

- Utility Work underway



Overall Airport Redevelopment Program Tracking Budget

Construction Budget December 2020	Budget 12/17/20 FOC	Committed Nov-20	Commitments Dec-20	Revised Commitments	Earned to Date	Estimate at Completion
Closed CGMPs 01, 03, 04, 09 & 15	\$217,279,720	\$217,279,720	\$0	\$217,279,720	\$217,279,720	\$217,279,720
CGMP 02 HDJV General Conditions Services	\$141,545,451	\$135,145,451	\$0	\$135,145,451	\$92,828,792	\$141,545,451
CGMP 05 Terminal/SCW/Gateway	\$1,037,311,402	\$1,014,907,690	\$22,403,712	\$1,037,311,402	\$1,019,921,684	\$1,037,311,402
CGMP 06 Parking Garage, Roadways, CUP	\$407,348,093	\$407,348,093	\$0	\$407,348,093	\$387,806,284	\$407,348,093
CGMP 07 TRP Baggage Handling System	\$108,094,181	\$108,094,181	\$0	\$108,094,181	\$94,421,949	\$108,094,181
CGMP 09A Apron Paving & Fueling/SCW	\$79,748,407	\$79,748,407	\$0	\$79,748,407	\$76,722,452	\$79,748,407
CGMP 10 South Concourse East/Tunnel Shell	\$398,207,572	\$397,310,540	\$0	\$397,310,540	\$26,148,401	\$398,207,572
CGMP 11 Apron Paving & Fueling SCE	\$233,223,072	\$191,182,465	\$0	\$191,182,465	\$10,044,416	\$233,223,072
CGMP 12 Existing Structure Demolition	\$35,772,132	\$28,902,767	\$6,857,357	\$35,760,124	\$12,038,767	\$35,772,132
CGMP 13 AOJV Preconstruction Services	\$16,235,519	\$16,235,518	\$0	\$16,235,518	\$13,875,914	\$16,235,519
CGMP 14 AOJV General Conditions Ph 1	\$93,384,788	\$47,006,676	\$0	\$47,006,676	\$43,234,388	\$93,384,788
CGMP 16 North Concourse & Mid-Tunnel Ph 1	\$300,786,053	\$300,786,053	\$0	\$300,786,053	\$291,757,281	\$300,786,053
CGMP 17 NCP Baggage Handling System	\$52,756,826	\$52,756,826	\$0	\$52,756,826	\$27,728,186	\$52,756,826
CGMP 18 NCP Apron Paving & Fueling Ph 1	\$91,949,310	\$91,949,310	\$0	\$91,949,310	\$78,843,882	\$91,949,310
CGMP 19 North Concourse & C-Tunnel Ph 2	\$262,438,048	\$28,647,982	\$0	\$28,647,982	\$1,433,782	\$262,438,048
CGMP 20 NCP Apron Paving & Jet Fuel Ph 2	\$44,856,288	\$0	\$0	\$0	\$0	\$44,856,288
Security Checkpoint Equipment	\$11,751,472	\$11,751,472	\$0	\$11,751,472	\$6,908,600	\$11,751,472
Reduntant Fuel Main	\$12,500,000	\$0	\$0	\$0	\$0	\$12,500,000
Taxilane X-X Construction	\$23,856,270	\$0	\$0	\$0	\$0	\$23,856,270
Total Program Construction	\$3,569,044,604	\$3,129,053,151	\$29,261,069	\$3,158,314,220	\$2,400,994,498	\$3,569,044,604
TRP Owner Procurement	\$5,215,472	\$5,215,472	\$0	\$5,215,472	\$4,808,421	\$5,215,472
NCP Owner Procurement	\$2,655,266	\$2,655,266	\$0	\$2,655,266	\$1,860,182	\$2,655,266
TRP Soft Cost	\$340,424,371	\$280,290,744	\$8,040,310	\$288,331,054	\$261,805,928	\$340,424,371
NCP Soft Cost	\$170,729,546	\$119,770,197	\$4,176,794	\$123,946,991	\$82,315,304	\$170,729,546
Total Program Soft Cost	\$519,024,655	\$407,931,679	\$12,217,104	\$420,148,783	\$350,789,835	\$519,024,655
TRP Owner Reserve	\$0					\$0
NCP Owner Reserve	\$12,440,455					\$12,440,455
Total Program Owner Reserve	\$12,440,455	\$0	\$0	\$0	\$0	\$12,440,455
Total ARP Program Budget	\$4,100,509,714	\$3,536,984,830	\$41,478,173	\$3,578,463,003	\$2,751,784,333	\$4,100,509,714



Construction December 2020



Construction - UTA TRAX Station



Moving Old TRAX Platform Canopy into New Station



TRAX Platform Canopy Installation



TRAX Station Looking East



TRAX Station Looking West

Parking Garage Demolition



East Helix Demolition



East Helix Demolition



Parking Garage Demolition Looking Northeast



Parking Garage Building



Concourse F & G Pavement Demolition



Concourse G Ready for Demolition



Concourse F & G Pavement Demolition



Concourse G Pavement Demolition



Concourse G Pavement Demolition

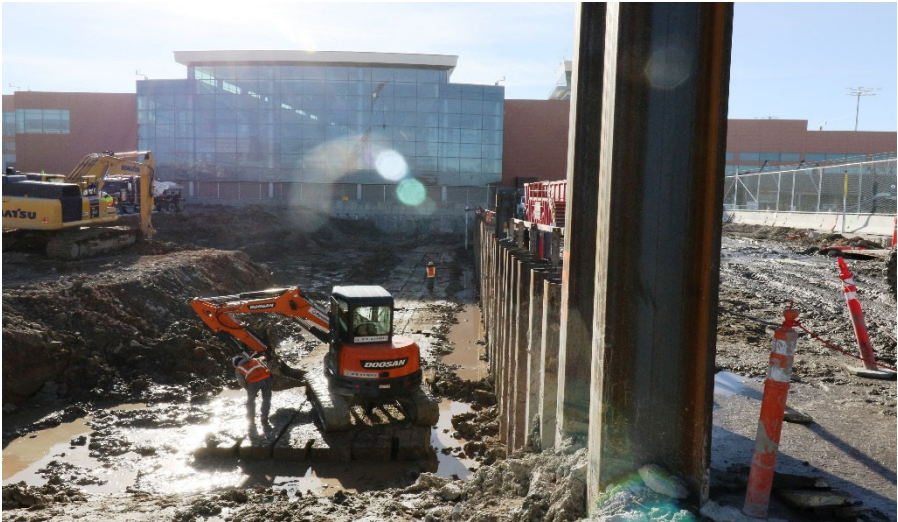
Central Tunnel Construction



Central Tunnel Excavation Looking West



Installation of Central Tunnel Tie-backs

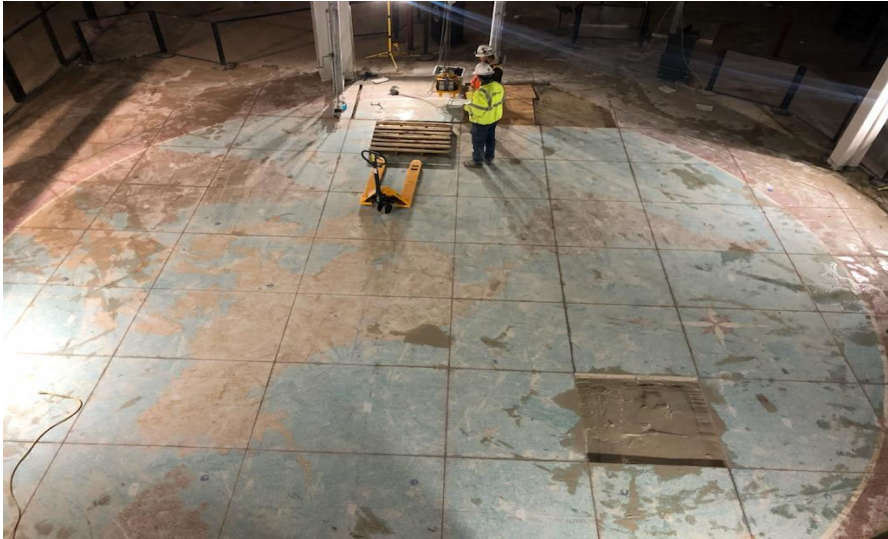


Central Tunnel Pilings & Excavation



Tunnel Excavation Looking North

World Map Salvage



World Map Sections



Hoisting out Sections



Loading Sections & Prep for Storage



Sections Stored for Future Reassembly

Other Construction & Demolition Activities



Garage Demolition Rubble



Demolition Rubble Haul-off



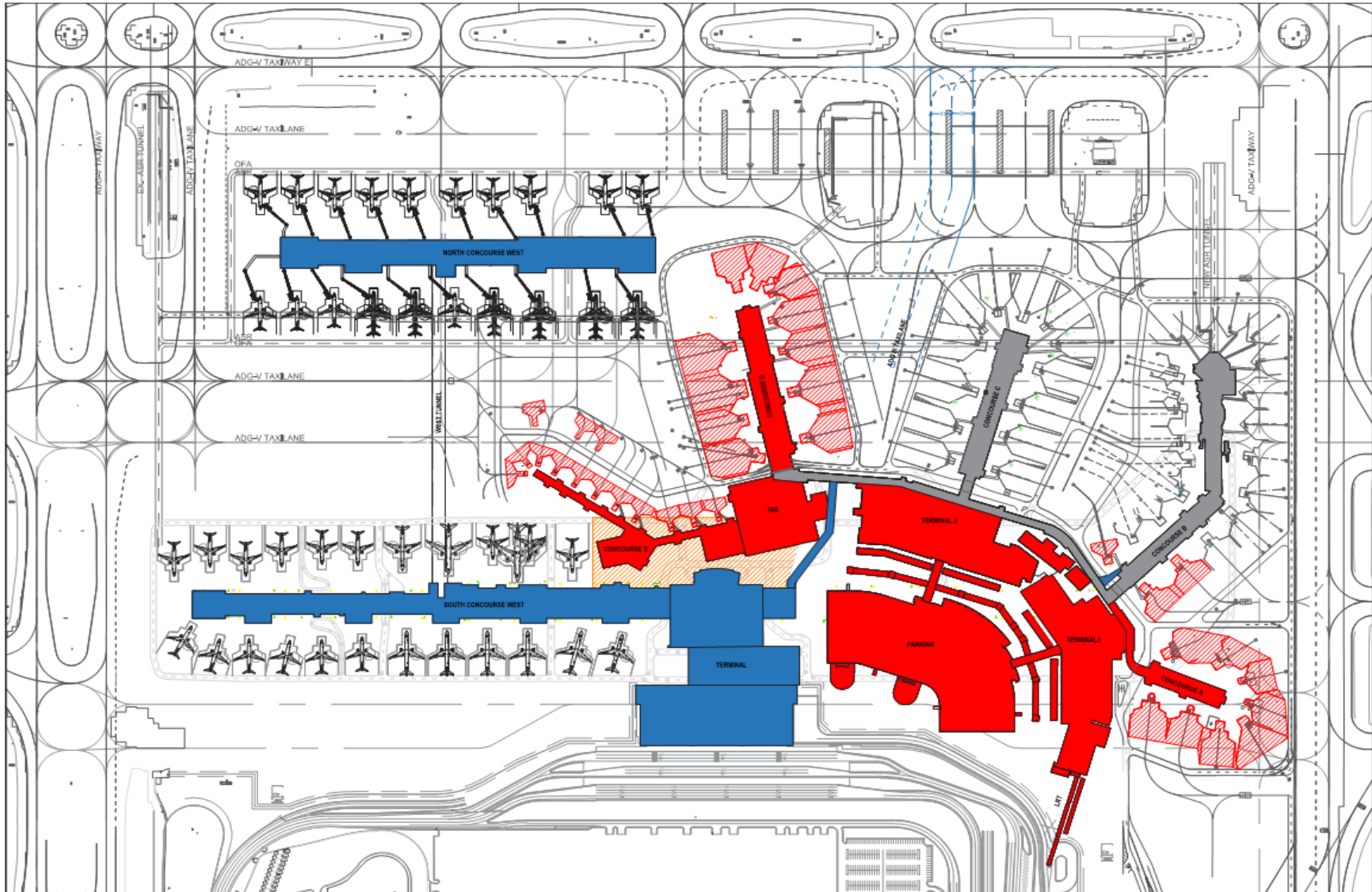
TRAX Track Installation



Start of T2 Demolition

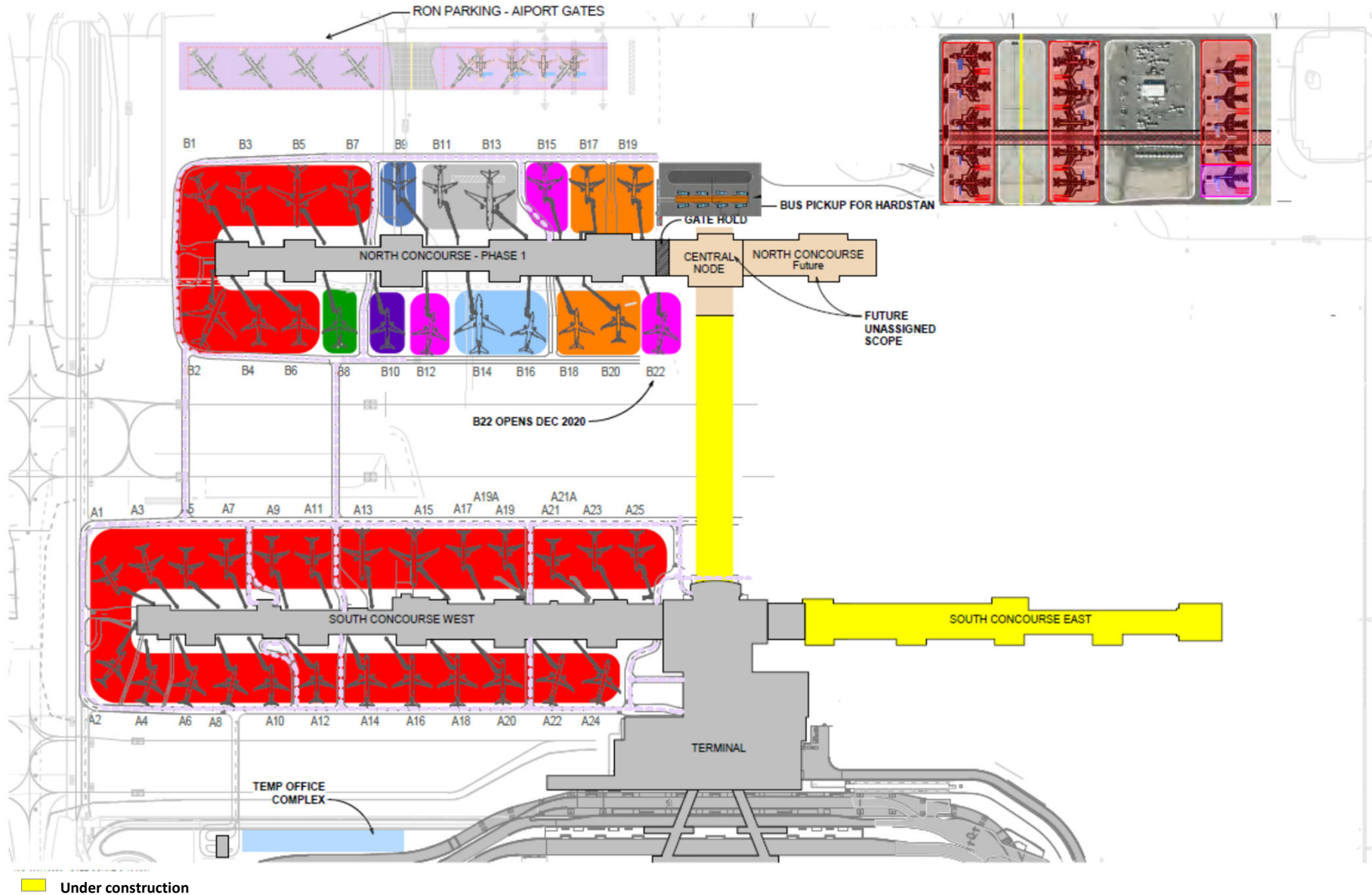


Original Phasing - Phase 1 Complete and Start of Demolition

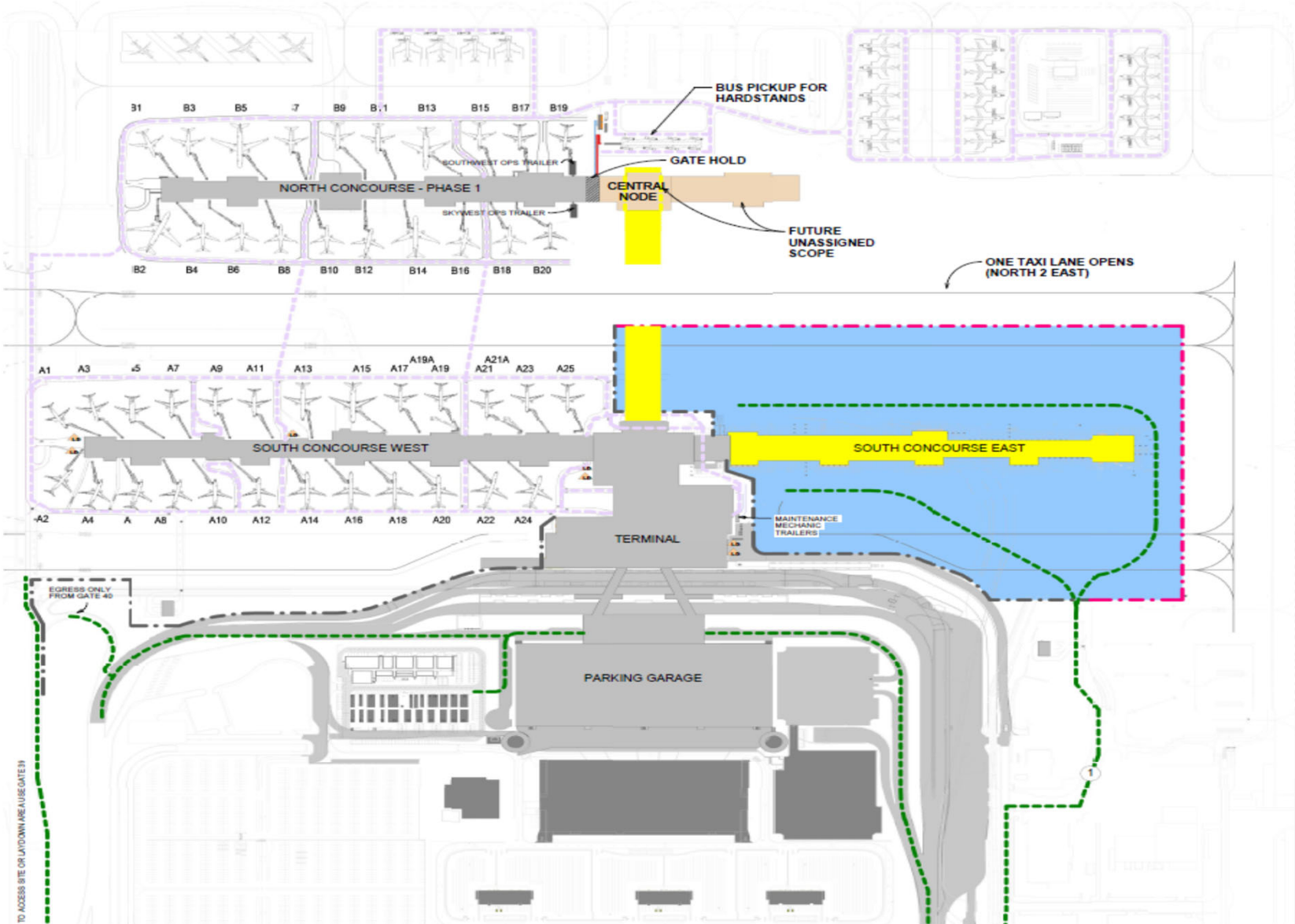


 Demolition  Construction complete

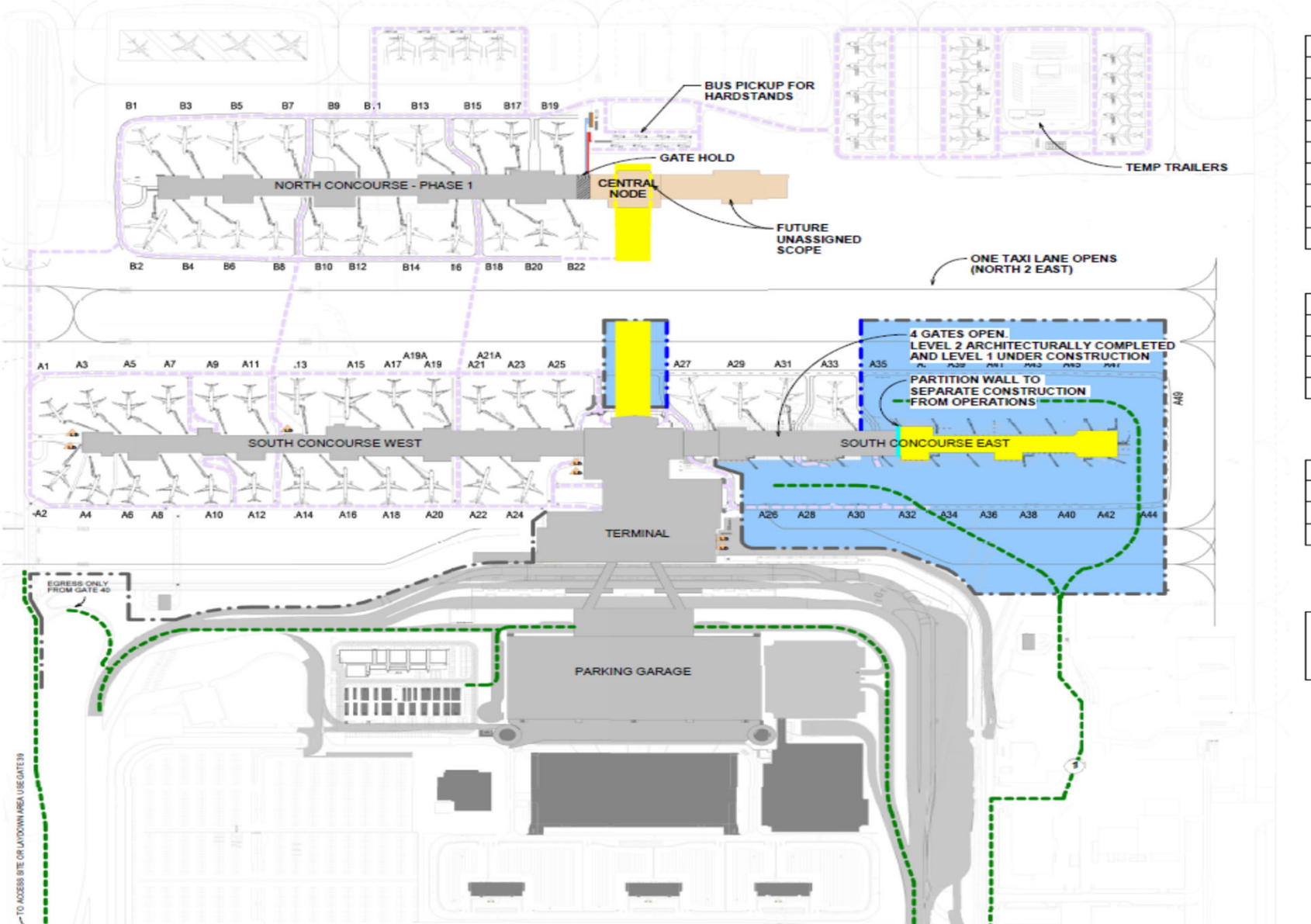
ARP2020 Rephasing – After Phase 1 Opening



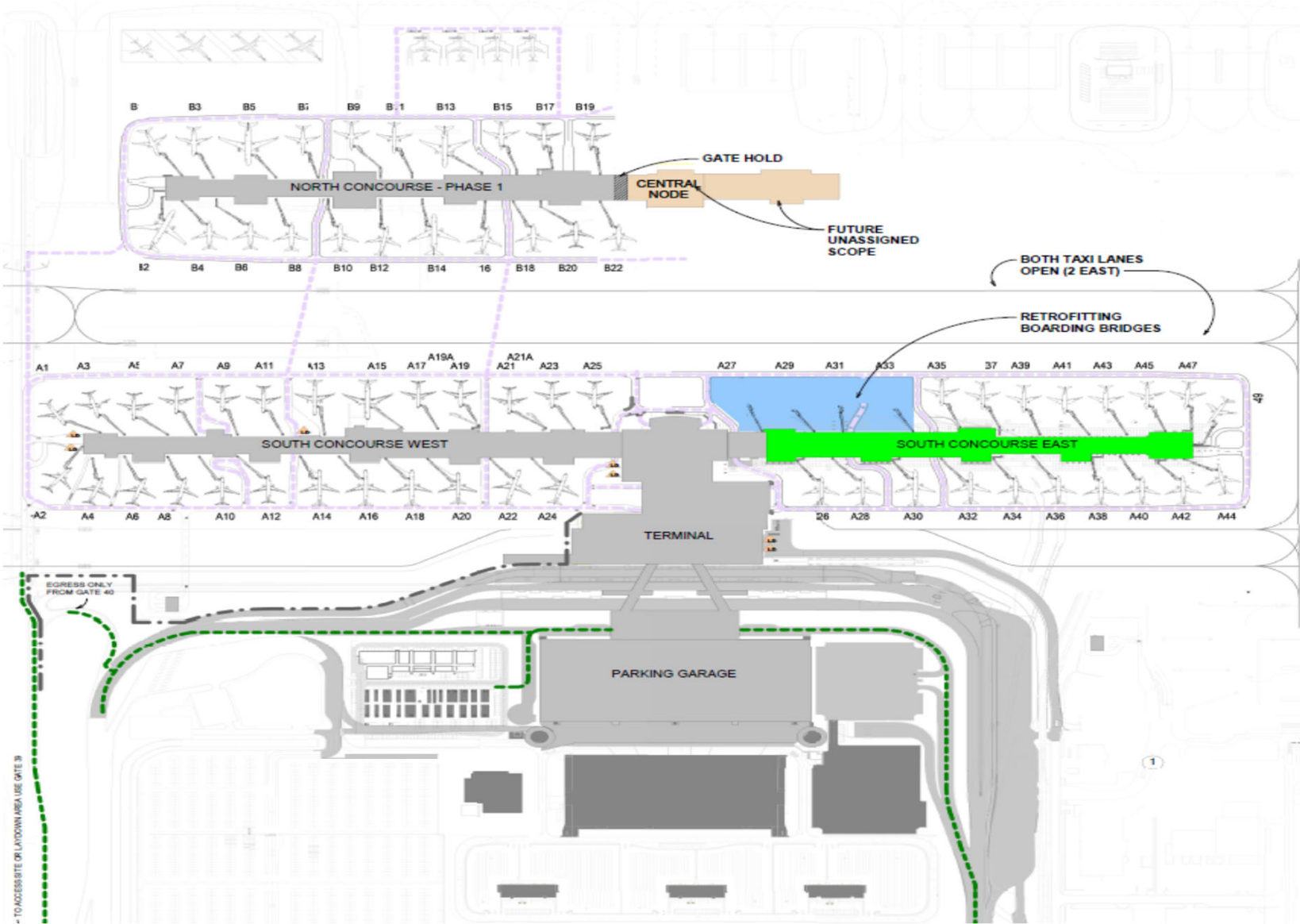
Construction – One East/West Taxilane Opens 12/2022



Construction – Open 4 New Gates May 2023



Construction – Concourse ‘A’ 22 East Gates Target 11/2023



AGENDA: DISCUSSION ITEM (C)
DATE: 20 January 2021
TO: Airport Advisory Board
FROM: Bill Wyatt, Executive Director
SUBJECT: **Airport Revenue Short-Term Revolving Obligations**

Brian Butler, Airport Chief Financial Officer, will present an update on the SLC Airport Revenue Short-Term Revolving Obligations (presentation on file).



Presentation to Airport Advisory Board
on the
Salt Lake City, Utah
Salt Lake City International Airport
Airport Revenue Short-Term Revolving Obligations

January 20, 2021

Financing schedule for the 2021 Revolving Line of Credit shows closing on March 1, 2021.*



Tuesday, January 19	City Council Briefing
Tuesday, January 19	City Council Meeting – Resolution Adoption
Tuesday February 16	Hold Public Hearing
Monday March 1	Closing

* Schedule is subject to change

Key Terms of the Agreement

- Credit Facility (Line of Credit) is up to \$300 million and has a term of three years with JPM Chase. Can be terminated after one year.
 - Unutilized Rate is .7%
 - Utilized Rate 80% 1M Libor + 1% for Tax Exempt (Currently estimated at 1.5%)
 - Utilized Rate 1M Libor + 1.25% for Taxable (Currently estimated at 1.75%)
 - Subordinated Trust Indenture and Rate Covenants
-

Two additional financings are planned to fund the ARP.

	Series 2021	Series 2023
Assumed Issuance Date	July 31, 2021	July 31, 2023
Estimated Principal Amount	\$589.5 million	\$573.1 million
Estimated Project Fund Deposit	\$606.5 million	\$556.5 million
Assumed Bond Yield	4.10%	4.40%
Capitalized Interest Period	Partially through 2024	Partially through 2024
Assumed Final Maturity	7/1/2051	7/1/2052

AGENDA: DISCUSSION ITEM (D)
DATE: 20 January 2021
TO: Airport Advisory Board
FROM: Bill Wyatt, Executive Director
SUBJECT: **Motion to Approve Audited Financials**

Brian Butler, Airport Chief Financial Officer, will ask the Board to accept and approve the audited financials presented by Eide Bailly in October 2020. A formal motion was failed to be obtained.

<https://slcairport.com/assets/pdfDocuments/AABoard/SaltLakeAirportCAFrfY2020.pdf>



Advisory Board
Meeting

January 20, 2021

Information

SALT LAKE CITY DEPARTMENT OF AIRPORTS
(An Enterprise Fund of Salt Lake City Corporation)
Statements of Net Position (Unaudited)
(Amounts in Thousands)

<i>As of November 30,</i>	2020	2019
ASSETS		
Current Assets		
Cash and cash equivalents	\$ 23,188	\$ 137,946
Restricted cash and cash equivalents	35,485	405,092
Restricted investments	19,008	411,786
Investments	-	12,332
Airline and rental fees receivable	22,080	25,379
Other assets	(1,631)	4,449
Total current assets	98,130	996,984
Noncurrent Assets		
Restricted cash and cash equivalents	110,701	13,446
Restricted investments	65,061	56,494
Investments	122,793	34,139
Loans receivable	23,193	-
Other assets	6,492	254
Total noncurrent assets and investments	328,240	104,333
Capital assets		
Land	111,696	105,129
Building and improvements	1,419,993	1,415,726
Equipment	169,490	152,311
Construction in progress	2,622,281	1,912,282
Total capital assets - at cost	4,323,460	3,585,448
Less accumulated depreciation	1,104,628	1,061,018
Net capital assets	3,218,832	2,524,430
Total noncurrent assets	3,547,072	2,628,763
Total Assets	3,645,202	3,625,747
Deferred Outflows of Resources	4,521	7,002
Total Assets and Deferred Outflows of Resources	\$ 3,649,723	\$ 3,632,749

SALT LAKE CITY DEPARTMENT OF AIRPORTS
(An Enterprise Fund of Salt Lake City Corporation)
Statements of Net Position (Unaudited)
(Amounts in Thousands)

<i>As of November 30,</i>	2020	2019
LIABILITIES		
Current Liabilities		
Accounts payable	\$ 38,729	\$ 26,259
Accrued compensation	1,275	825
Interest payable	38,657	38,657
Other accrued liabilities	46,855	7,817
Total current liabilities	125,516	73,558
Noncurrent Liabilities		
Revenue bonds payable	2,037,127	2,044,534
Noncurrent compensation liability	3,801	3,556
Net pension liability	8,431	17,737
Other accrued liabilities	50,849	60,602
Total noncurrent liabilities	2,100,208	2,126,429
Total Liabilities	2,225,724	2,199,987
Deferred Inflows of Resources		
Deferred inflows - revenue collected in advance	5,469	4,242
Deferred inflows - pension	4,993	652
Total Deferred Inflows of Resources	10,462	4,894
NET POSITION		
Net investment in capital assets	1,358,040	1,207,281
Restricted for		
Capital projects	53,909	66,658
Debt service	175,966	264,818
Unrestricted	(174,378)	(110,889)
Net Position	1,413,537	1,427,868
Total Liabilities, Deferred Inflows of Resources, and Net Position	\$ 3,649,723	\$ 3,632,749

SALT LAKE CITY DEPARTMENT OF AIRPORTS

(An Enterprise fund of Salt Lake City Corporation)

Statements of Revenues, Expenses, and Changes in Fund Net Position (Unaudited)

(Amounts in Thousands)

<i>for the Five month period ended November,</i>	2020	2019
Operating Revenues		
Airline revenue	\$ 45,537	\$ 36,793
Terminal concessions	3,022	8,881
Landside concessions	14,035	30,979
Lease revenue	2,493	2,873
General aviation	1,243	1,323
State aviation tax	524	1,263
Other revenue	3,434	1,764
Operating revenues	70,288	83,876
Less airline revenue sharing	(2,391)	(6,096)
Total operating revenues	67,897	77,780
Operating Expenses		
Salaries and benefits	21,456	20,191
Materials and supplies	3,173	3,609
Maintenance contracts	3,937	4,819
Charges and services	8,372	4,276
Utilities	1,723	2,173
Inter-governmental	6,200	5,990
Other expenses	2,861	2,023
Total operating expenses before depreciation	47,722	43,081
Operating Income Before Depreciation	20,175	34,699
Depreciation Expense	23,874	27,575
Operating Income (Loss)	(3,699)	7,124
Non-Operating Revenues (Expenses)		
Passenger facility charges	9,158	21,396
Customer facility charges	2,443	6,609
Interest income	440	10,361
Interest expense	(41,634)	(35,848)
Other revenue (expenses), net	(36)	1,564
Net non-operating income (loss)	(29,629)	4,082
Capital Contributions		
Contributions and grants	16,293	(490)
Total capital contributions	16,293	(490)
Net Position		
Increase (decrease) in net position	(17,035)	10,716
Net Position, beginning of period	1,430,572	1,417,152
Net Position, end of period	\$ 1,413,537	\$ 1,427,868

SALT LAKE CITY DEPARTMENT OF AIRPORTS
(An Enterprise fund of Salt Lake City Corporation)
OPERATING REVENUES AND EXPENDITURES TO BUDGET (Unaudited)
(Amounts in Thousands)

	Jul 2020 - Nov 2020 ACTUALS	Jul 2020 - Nov 2020 BUDGET	SURPLUS/ DEFICIT	PERCENT CHANGE
Revenues				
Landing Fees	\$ 19,509	\$ 24,481	\$ (4,972)	-20.3%
Fuel Farm	225	225	-	0.0%
Aircraft Remain Overnight Fees	183	99	84	85.6%
Cargo Bldg. & Ramp Use Fee	715	692	23	3.3%
Security Charges to TSA	285	325	(40)	-12.3%
Extraordinary Service Charges	64	21	43	204.7%
Passenger Boarding Bridges	587	796	(209)	-26.2%
Tenant Telephone Fees	74	67	7	10.9%
Terminal Rents	22,709	36,790	(14,081)	-38.3%
General Aviation Hangars	529	521	8	1.5%
FBO Hangars/Fuel Oil Royalty	201	177	24	13.7%
Flight Kitchens	370	486	(116)	-23.9%
Other Buildings & Office Space	2,479	2,328	151	6.5%
Food Service & Vending	1,948	3,693	(1,745)	-47.2%
News/Gift Shop	980	2,125	(1,145)	-53.9%
Car Rental	7,323	8,778	(1,455)	-16.6%
Leased Site Areas	1,303	1,184	119	10.0%
Auto Parking/Ground Transportation	6,707	13,993	(7,286)	-52.1%
Advertising	94	316	(222)	-70.3%
State Aviation Fuel Tax	524	770	(246)	-31.9%
Military	78	65	13	20.0%
Glycol Recycling Sales	84	172	(88)	-51.2%
Auxiliary Airport Fuel Sales	513	640	(127)	-19.8%
Other	2,804	3,465	(661)	-19.1%
Less: Airline Revenue Sharing	(2,391)	(3,366)	975	-28.96%
Total Operating Revenues	67,897	98,843	(30,946)	-31.3%
Expenses				
Salary & Wages	15,172	16,996	1,824	10.7%
Employee Benefits	6,796	7,860	1,064	13.5%
Maintenance Supplies	1,829	3,592	1,763	49.1%
Automotive Supplies	947	2,256	1,309	58.0%
Other Supplies	397	1,859	1,462	78.7%
Insurance Premiums	2,520	1,585	(935)	-59.0%
Janitorial Service	3,271	5,232	1,961	37.5%
Maintenance Contracts	666	1,500	834	55.6%
Other Contractual Services	3,500	7,588	4,088	53.9%
Professional & Tech Services	4,871	2,435	(2,436)	-100.0%
Utilities	1,723	3,163	1,440	45.5%
Administrative Service Fee	549	766	217	28.3%
Aircraft Rescue Fire Fighting	2,192	2,192	(0)	0.0%
Police Services	3,458	3,458	(0)	0.0%
Other Expenses	341	1,172	831	70.8%
Contingency Reserve	-	417	417	100.0%
Operating Expenses Before Capitalized Salaries	48,232	62,071	13,839	22.3%
Capitalized Salaries	510	510	-	0.0%
Total Operating Expenses	47,722	61,561	13,839	22.5%
Operating Income	\$ 20,175	\$ 37,282	\$ (17,107)	-45.9%

SALT LAKE CITY DEPARTMENT OF AIRPORTS

(An Enterprise fund of Salt Lake City Corporation)

OPERATING REVENUES AND EXPENDITURES TO PRIOR YEAR (Unaudited)

(Amounts in Thousands)

	Jul 2020 - Nov 2020	Jul 2019 - Nov 2019	DOLLAR CHANGE	PERCENT CHANGE
Revenues				
Landing Fees	\$ 19,509	\$ 17,519	\$ 1,990	11.4%
Fuel Farm	225	225	-	0.0%
Aircraft Remain Overnight Fees	183	100	83	83.2%
Cargo Bldg. & Ramp Use Fee	715	684	31	4.5%
Security Charges to TSA	285	325	(40)	-12.3%
Extraordinary Service Charges	64	12	52	433.7%
Passenger Boarding Bridges	587	839	(252)	-30.1%
Tenant Telephone Fees	74	117	(43)	-36.7%
Terminal Rents	22,709	16,504	6,205	37.6%
General Aviation Hangars	529	547	(18)	-3.4%
FBO Hangars/Fuel Oil Royalty	201	177	24	13.6%
Flight Kitchens	370	782	(412)	-52.7%
Other Buildings & Office Space	2,479	2,309	170	7.4%
Food Service & Vending	1,948	5,391	(3,443)	-63.9%
News/Gift Shops	980	3,060	(2,080)	-68.0%
Car Rental	7,323	12,315	(4,992)	-40.5%
Leased Site Areas	1,303	1,177	126	10.7%
Auto Parking/Ground Transportation	6,707	18,647	(11,940)	-64.0%
Advertising	94	430	(336)	-78.0%
State Aviation Fuel Tax	524	1,263	(739)	-58.5%
Military	78	75	3	4.1%
Glycol Recycling Sales	84	172	(88)	-51.2%
Auxiliary Airport Fuel Sales	513	599	(86)	-14.4%
Other	2,804	607	2,197	362.1%
Less: Airline Revenue Sharing	(2,391)	(6,096)	3,705	-60.8%
Operating Revenues	67,897	77,780	(9,883)	-12.7%
Expenses				
Salary & Wages	\$ 15,172	\$ 14,191	\$ 981	6.9%
Employee Benefits	6,796	6,534	262	4.0%
Maintenance Supplies	1,829	1,980	(151)	-7.6%
Automotive Supplies	947	1,180	(233)	-19.8%
Other Supplies	397	449	(52)	-11.6%
Insurance Premiums	2,520	1,478	1,042	70.5%
Janitorial Service	3,271	3,729	(458)	-12.3%
Maintenance Contracts	666	1,090	(424)	-38.9%
Other Contractual Services	3,500	3,075	425	13.8%
Professional & Tech Service	4,871	1,201	3,670	305.5%
Utilities	1,723	2,173	(450)	-20.7%
Administrative Service Fee	549	3,861	(3,312)	-85.8%
Aircraft Rescue Fire Fighting	2,192	2,129	63	3.0%
Police Services	3,458	-	3,458	0.0%
Other Expenses	341	546	(205)	-37.5%
Operating Expenses Before Capitalized Salaries	48,232	43,616	4,616	10.6%
Capitalized Salaries	510	535	(25)	-4.7%
Total Operating Expenses	47,722	43,081	4,641	10.8%
Operating Income	\$ 20,175	\$ 34,699	\$ (14,524)	-41.9%



**SALT LAKE CITY INTERNATIONAL AIRPORT
AIR TRAFFIC STATISTICS AND ACTIVITY REPORT
ELEVEN MONTHS ENDED November 2020**

	November 2020	CHANGE	YTD 2020	CHANGE	HIDE 12 MO ROLLING Ending 11/2019	12 MO ROLLING Ending 11/2020	CHANGE
PASSENGERS							
<i>DOMESTIC</i>							
Enplaned	480,140	-50.04%	5,603,103	-52.46%	12,749,741	6,662,629	-47.74%
Deplaned	470,188	-51.13%	5,562,562	-52.67%	12,761,404	6,656,517	-47.84%
TOTAL DOMESTIC	950,328	-50.59%	11,165,665	-52.56%	25,511,145	13,319,146	-47.79%
<i>INTERNATIONAL</i>							
Enplaned	14,035	-60.48%	142,178	-72.17%	546,729	180,684	-66.95%
Deplaned	12,262	-63.87%	155,588	-70.59%	563,310	193,138	-65.71%
TOTAL INTERNATIONAL	26,297	-62.13%	297,766	-71.36%	1,110,039	373,822	-66.32%
TOTAL PASSENGERS	976,625	-50.99%	11,463,431	-53.36%	26,621,184	13,692,968	-48.56%
LANDED WEIGHT							
Air Carriers	992,532,409	-11.41%	9,604,234,626	-27.77%	14,442,151,858	10,829,143,212	-25.02%
Cargo Carriers	107,473,027	9.55%	1,159,041,194	9.72%	1,191,973,690	1,310,934,089	9.98%
TOTAL LANDED WEIGHT (LBS)	1,100,005,436	-9.72%	10,763,275,820	-25.01%	15,634,125,548	12,140,077,301	-22.35%
MAIL							
Enplaned	2,883,946	21.85%	32,126,830	27.53%	26,534,265	33,676,163	26.92%
Deplaned	1,996,771	55.75%	19,210,556	40.31%	14,834,486	20,359,106	37.24%
TOTAL MAIL (LBS)	4,880,717	33.76%	51,337,386	32.03%	41,368,751	54,035,269	30.62%
CARGO							
Enplaned	17,125,568	11.14%	186,991,599	6.26%	194,697,069	207,763,521	6.71%
Deplaned	17,021,081	0.92%	187,428,430	1.45%	205,375,074	207,951,506	1.25%
TOTAL CARGO (LBS)	34,146,649	5.80%	374,420,029	3.80%	400,072,143	415,715,027	3.91%
MAIL & CARGO							
Enplaned	8,563	11.14%	93,496	6.26%	97,349	103,882	6.71%
Deplaned	8,511	0.92%	93,714	1.45%	102,688	103,976	1.25%
TOTAL MAIL & CARGO (TONS)	17,074	5.80%	187,210	3.80%	200,037	207,858	3.91%
AIRCRAFT OPERATIONS							
Passenger Aircraft	17,362	-10.83%	169,456	-27.85%	255,858	191,066	-25.32%
All-Cargo Aircraft	1,678	-0.83%	18,382	0.51%	20,336	20,478	0.70%
General Aviation	4,617	-9.88%	59,675	1.66%	63,120	64,689	2.49%
Military	178	29.93%	2,765	-29.63%	4,216	2,904	-31.12%
TOTAL AIRCRAFT OPERATIONS	23,835	-9.79%	250,278	-20.74%	343,530	279,137	-18.74%

**SALT LAKE CITY INTERNATIONAL AIRPORT
PASSENGER TRAFFIC REPORT
ELEVEN MONTHS ENDED November 2020**

	November 2019	November 2020	% CHANGE	YTD 2019	YTD 2020	% CHANGE	12 MO ROLLING Ending 11/2020	% CHANGE
ENPLANED PASSENGERS								
AEROMEXICO	4,020	-	-100.0%	45,769	11,436	-75.0%	15,352	-69.3%
ALASKA	7,852	1,601	-79.6%	155,060	47,072	-69.6%	55,796	-67.0%
Horizon Air / Alaska	1,111	1,740	56.6%	6,709	9,958	48.4%	11,012	64.1%
Skywest / Alaska	12,921	4,308	-66.7%	139,907	71,616	-48.8%	86,599	-43.3%
AMERICAN	39,960	20,042	-49.8%	564,812	311,361	-44.9%	366,210	-39.9%
Compass	1,919	-	-100.0%	22,065	6,563	-70.3%	9,464	-60.2%
Envoy Air	-	-	0.0%	-	733	100.0%	733	932.4%
American/Mesa Air	-	818	100.0%	6,283	818	-87.0%	818	-87.0%
Republic	-	-	0.0%	-	816	100.0%	816	100.0%
SkyWest (American)	5,995	7,969	32.9%	75,673	55,334	-26.9%	61,438	-27.3%
DELTA	577,825	276,123	-52.2%	6,665,279	3,098,016	-53.5%	3,696,900	-48.4%
SkyWest (Delta Connection)	155,203	100,239	-35.4%	1,862,588	1,040,356	-44.1%	1,242,955	-39.3%
Compass (Delta Connection)	13,719	-	-100.0%	386,423	-	-100.0%	1,165	-99.7%
FRONTIER	21,998	14,088	-36.0%	223,506	128,175	-42.7%	149,885	-37.7%
JETBLUE	29,965	4,247	-85.8%	349,347	109,592	-68.6%	141,359	-62.5%
KLM ROYAL DUTCH AIRLINES	-	-	0.0%	20,282	-	-100.0%	0	-100.0%
SOUTHWEST	85,400	39,204	-54.1%	1,202,298	575,868	-52.1%	671,817	-48.4%
UNITED	5,898	8,450	43.3%	208,744	124,239	-40.5%	141,140	-38.8%
GoJet Airlines	70	-	-100.0%	15,797	-	-100.0%	119	-99.3%
Express Jet	1,928	-	-100.0%	5,956	600	-89.9%	874	-85.3%
Mesa Airlines (United Express)	2,193	-	-100.0%	18,652	5,650	-69.7%	9,063	-58.5%
Republic Airways (United)	3,274	-	-100.0%	54,548	1,953	-96.4%	3,806	-93.4%
SkyWest (United Express)	25,138	15,346	-39.0%	265,309	144,870	-45.4%	175,606	-39.6%
Trans States	-	-	0.0%	-	-	0.0%	0	0.0%
Charters	209	-	-100.0%	1,204	255	-78.8%	386	-71.3%
West Coast Charters	-	0	0.0%	-	0	0.0%	0	0.0%
TOTAL ENPLANED PASSENGERS	996,598	494,175	-50.4%	12,296,211	5,745,281	-53.3%	6,843,313	-48.5%
AeroMexico	3,785	-	-100.0%	46,242	11,393	-75.4%	15,506	-69.2%
ALASKA AIR	7,999	1,566	-80.4%	146,181	45,595	-68.8%	54,553	-66.0%
Horizon Air / Alaska	971	1,626	67.5%	6,843	10,074	47.2%	11,165	63.2%
Skywest / Alaska	13,201	3,934	-70.2%	141,559	74,765	-47.2%	90,182	-41.9%
AMERICAN	42,779	18,671	-56.4%	584,458	302,971	-48.2%	359,159	-43.5%
Compass	2,050	-	-100.0%	22,280	6,494	-70.9%	9,682	-59.9%
Envoy Air (American)	-	-	0.0%	-	722	100.0%	722	916.9%
Mesa Air	-	877	100.0%	5,399	877	-83.8%	877	-83.8%
Republic	-	-	0.0%	-	766	100.0%	766	100.0%
SkyWest (American)	6,364	7,155	12.4%	80,575	55,475	-31.2%	62,398	-31.5%
DELTA	576,320	269,460	-53.2%	6,654,585	3,096,937	-53.5%	3,718,229	-48.1%
SkyWest (Delta Connection)	154,170	100,302	-34.9%	1,865,842	1,035,477	-44.5%	1,239,760	-39.6%
Compass (Delta Connection)	13,003	-	-100.0%	372,582	-	-100.0%	1,348	-99.7%
FRONTIER	22,316	14,007	-37.2%	223,466	129,793	-41.9%	151,768	-37.0%
JETBLUE	30,028	4,596	-84.7%	345,536	111,298	-67.8%	144,842	-61.4%
KLM ROYAL DUTCH AIRLINES	-	-	0.0%	35,450	-	-100.0%	0	-100.0%
SOUTHWEST	84,455	37,337	-55.8%	1,189,936	564,926	-52.5%	662,519	-48.8%
UNITED	5,853	7,893	34.9%	205,377	119,085	-42.0%	136,148	-41.0%
GoJet Airlines	65	-	-100.0%	15,767	-	-100.0%	128	-99.2%
Express Jet	1,657	-	-100.0%	5,585	582	-89.6%	847	-84.8%
Mesa Airlines / United Express	2,128	-	-100.0%	17,886	5,597	-68.7%	9,133	-56.9%
Republic Airways (United)	3,296	-	-100.0%	56,337	2,037	-96.4%	4,151	-93.0%
SkyWest (United Express)	25,329	15,026	-40.7%	259,057	143,095	-44.8%	175,447	-38.4%
Trans States	-	-	0.0%	-	-	0.0%	0	0.0%
Charters	240	-	-100.0%	1,323	191	-85.6%	325	-79.1%
West Coast Charters	-	-	0.0%	-	-	0.0%	-	0.0%
TOTAL DEPLANED PASSENGERS	996,009	482,450	-51.6%	12,282,266	5,718,150	-53.4%	6,849,655	-48.6%
TOTAL PASSENGERS*	1,992,607	976,625	-51.0%	24,578,477	11,463,431	-53.4%	13,692,968	-48.6%
INTERNATIONAL - ENPLANED								
AEROMEXICO	4,020	-	-100.0%	45,769	11,436	-75.0%	15,352	-69.3%
DELTA	25,019	14,035	-43.9%	384,485	124,924	-67.5%	154,152	-62.5%
SkyWest (Delta Connection)	454	-	-100.0%	19,104	5,736	-70.0%	10,667	-53.4%
Compass	6,019	-	-100.0%	41,185	-	-100.0%	431	-99.0%
KLM ROYAL DUTCH AIRLINES	-	-	0.0%	20,282	-	-100.0%	0	-100.0%
Charters	-	-	0.0%	-	82	100.0%	82	100.0%
TOTAL ENPLANED INTERNATIONAL	35,512	14,035	-60.5%	510,825	142,178	-72.2%	180,684	-67.0%
AEROMEXICO	3,785	-	-100.0%	46,242	11,393	-75.4%	15,506	-69.2%
DELTA	24,114	12,262	-49.1%	383,310	134,906	-64.8%	163,092	-60.1%
SkyWest (Delta Connection)	453	-	-100.0%	23,618	9,289	-60.7%	13,951	-48.8%
Compass	5,585	-	-100.0%	40,350	-	-100.0%	589	-98.6%
KLM ROYAL DUTCH AIRLINES	-	-	0.0%	35,450	-	-100.0%	0	-100.0%
Charters	-	-	0.0%	-	-	0.0%	-	0.0%
TOTAL DEPLANED INTERNATIONAL	33,937	12,262	-63.9%	528,970	155,588	-70.6%	193,138	-65.7%
TOTAL INTERNATIONAL PASSENGERS	69,449	26,297	-62.1%	1,039,795	297,766	-71.4%	373,822	-66.3%

*Includes International

**SALT LAKE CITY INTERNATIONAL AIRPORT
ELEVEN MONTHS ENDED November 2020
Based on Total Enplanements**

MARKET SHARE

	November 2019	MARKET SHARE	November 2020	MARKET SHARE	YTD 2019	MARKET SHARE	YTD 2020	MARKET SHARE	12 MO ROLLING Ending 11/2019	12 MO ROLLING Ending 11/2020	MARKET SHARE
AEROMEXICO	4,020	0.40%	-	0.00%	45,769	0.37%	11,436	0.20%	50,021	15,352	0.22%
ALASKA	21,884	2.20%	7,649	1.55%	301,676	2.45%	128,646	2.24%	328,680	153,407	2.24%
AMERICAN	47,874	4.80%	28,829	5.83%	668,833	5.44%	375,625	6.54%	723,538	439,479	6.42%
DELTA	746,747	74.93%	376,362	76.16%	8,914,290	72.50%	4,138,372	72.03%	9,631,136	4,941,020	72.20%
FRONTIER	21,998	2.21%	14,088	2.85%	223,506	1.82%	128,175	2.23%	240,437	149,885	2.19%
JETBLUE	29,965	3.01%	4,247	0.86%	349,347	2.84%	109,592	1.91%	376,815	141,359	2.07%
KLM ROYAL DUTCH	-	0.00%	-	0.00%	20,282	0.16%	-	0.00%	20,282	-	0.00%
SOUTHWEST	85,400	8.57%	39,204	7.93%	1,202,298	9.78%	575,868	10.02%	1,301,460	671,817	9.82%
UNITED	38,501	3.86%	23,796	4.82%	569,006	4.63%	277,312	4.83%	622,756	330,608	4.83%
Charters	209	0.02%	-	0.00%	1,204	0.01%	255	0.00%	1,345	386	0.01%
TOTAL ENPLANEMENTS	996,598	100%	494,175	100%	12,296,211	100%	5,745,281	100%	13,296,470	6,843,313	100%

PERCENT CHANGE YOY

	November 2019	November 2020	PERCENT CHANGE	YTD 2019	YTD 2020	PERCENT CHANGE	12 MO ROLLING Ending 11/2019	12 MO ROLLING Ending 11/2020	PERCENT CHANGE
AEROMEXICO	4,020	-	100.00%	45,769	11,436	100.00%	50,021	15,352	-69.31%
ALASKA	21,884	7,649	-65.05%	301,676	128,646	-57.36%	328,680	153,407	-53.33%
AMERICAN	47,874	28,829	-39.78%	668,833	375,625	-43.84%	723,538	439,479	-39.26%
DELTA	746,747	376,362	-49.60%	8,914,290	4,138,372	-53.58%	9,631,136	4,941,020	-48.70%
FRONTIER	21,998	14,088	-35.96%	223,506	128,175	-42.65%	240,437	149,885	-37.66%
JETBLUE	29,965	4,247	-85.83%	349,347	109,592	-68.63%	376,815	141,359	-62.49%
KLM ROYAL DUTCH	-	-	0.00%	20,282	-	0.00%	20,282	-	-100.00%
SOUTHWEST	85,400	39,204	-54.09%	1,202,298	575,868	-52.10%	1,301,460	671,817	-48.38%
UNITED	38,501	23,796	-38.19%	569,006	277,312	-51.26%	622,756	330,608	-46.91%
Charters	209	-	-100.00%	1,204	255	-78.82%	1,345	386	-71.30%
TOTAL ENPLANEMENTS	996,598	494,175	-50.4%	12,296,211	5,745,281	-53.3%	13,296,470	6,843,313	-48.5%

**SALT LAKE CITY INTERNATIONAL AIRPORT
LANDING ACTIVITY
ELEVEN MONTHS ENDED November 2020**

	November 2019	November 2020	CHANGE	YTD 2019	YTD 2020	CHANGE	12 MO ROLLING Ending 11/2020	% CHANGE
TOTAL NUMBER OF LANDINGS								
SCHEDULED CARRIERS								
AEROMEXICO	30	-	-100.0%	333	109	-67.3%	140	-61.5%
ALASKA	64	21	-67.2%	1,122	443	-60.5%	505	-58.7%
Horizon Air / Alaska	15	40	166.7%	99	209	111.1%	224	126.3%
Skywest / Alaska	207	126	-39.1%	2,104	1,660	-21.1%	1,888	-18.3%
AMERICAN	298	164	-45.0%	4,018	2,488	-38.1%	2,871	-34.3%
Compass	31	-	-100.0%	323	102	-68.4%	148	-58.2%
American/Mesa Air	-	14	100.0%	85	14	-83.5%	14	-83.5%
Envoy Air (American)	-	-	0.0%	-	14	100.0%	15	1400.0%
Republic/ (American)	-	-	0.0%	-	12	100.0%	12	100.0%
SkyWest (American)	106	162	52.8%	1,269	1,124	-11.4%	1,234	-14.4%
DELTA	4,120	3,703	-10.1%	46,169	34,531	-25.2%	38,738	-22.1%
SkyWest (Delta Connection)	2,823	3,236	14.6%	33,332	29,300	-12.1%	32,915	-10.4%
Compass (Delta Connection)	199	-	-100.0%	5,595	1	-100.0%	20	-99.7%
FRONTIER	138	118	-14.5%	1,348	980	-27.3%	1,118	-23.4%
JETBLUE	234	60	-74.4%	2,567	1,144	-55.4%	1,390	-50.0%
KLM ROYAL DUTCH AIRLINES	-	-	0.0%	86	-	-100.0%	-	-100.0%
SOUTHWEST	719	516	-28.2%	9,895	6,530	-34.0%	7,276	-32.3%
UNITED	54	84	55.6%	1,605	1,065	-33.6%	1,195	-33.2%
GoJet	67	-	-100.0%	305	-	-100.0%	2	-99.4%
Express Jet	31	-	-100.0%	91	10	-89.0%	14	-84.6%
Mesa / United Express	30	-	-100.0%	259	98	-62.2%	146	-52.6%
Republic Airways Holdings	52	-	-100.0%	837	32	-96.2%	62	-93.0%
SkyWest (United Express)	409	311	-24.0%	4,077	2,873	-29.5%	3,379	-24.6%
Trans States	-	-	0.0%	-	-	0.0%	-	0.0%
SUBTOTAL SCHEDULED CARRIERS:	9,627	8,555	-11.1%	115,519	82,739	-28.4%	93,306	-25.8%
CHARTER CARRIERS								
ALLEGiant AIR	-	-	0.0%	8	-	-100.0%	1	100.0%
BOMBARDIER BUSINESS JETS	17	21	23.5%	381	450	18.1%	503	17.0%
BOUTIQUE AIR	-	-	0.0%	-	-	0.0%	-	0.0%
DELTA PRIVATE JETS	-	-	0.0%	-	-	0.0%	-	0.0%
EXECUTIVE JET MANAGEMENT	-	-	0.0%	-	-	0.0%	-	0.0%
FLIGHT OPTIONS	-	-	0.0%	-	-	0.0%	-	0.0%
KALITTA CHARTERS	4	5	25.0%	62	59	-4.8%	66	6.5%
KEYLIME AIR	4	-	-100.0%	14	2	-85.7%	2	-88.2%
NETJETS	86	88	2.3%	1,352	1,318	-2.5%	1,484	-0.1%
SUNSET AVIATION	-	-	0.0%	-	-	0.0%	-	0.0%
SWIFT AIR	-	-	0.0%	-	-	0.0%	-	0.0%
VIRGIN AMERICA	-	-	0.0%	-	-	0.0%	-	0.0%
XOJET	-	17	100.0%	131	213	62.6%	231	56.1%
OTHER CHARTER	1	-	-100.0%	6	5	-16.7%	5	-66.7%
SUBTOTAL CHARTER CARRIERS:	112	131	17.0%	1,954	2,047	4.8%	2,292	6.3%
CARGO CARRIERS								
ABX AIR	-	-	0.0%	1	-	-100.0%	0	-100.0%
AERO CHARTER & TRANSPORT	-	-	0.0%	-	-	0.0%	-	0.0%
AIR TRANSPORT INTERNATIONAL	-	-	0.0%	-	-	0.0%	-	0.0%
ALPINE AVIATION	173	154	-11.0%	2,002	1,905	-4.8%	2,090	-4.0%
AMERIFLIGHT	178	113	-36.5%	1,671	1,310	-21.6%	1,497	-19.6%
CORPORATE AIR (BILLINGS)	127	120	-5.5%	1,404	1,272	-9.4%	1,413	-7.9%
EMPIRE	17	15	-11.8%	174	170	-2.3%	185	-2.6%
FEDERAL EXPRESS	135	152	12.6%	1,552	1,687	8.7%	1,876	7.9%
GEM AIR	58	73	25.9%	581	599	3.1%	683	0.7%
SOUTHERN AIR	23	-	-100.0%	316	137	-56.6%	155	-56.9%
UPS	127	166	30.7%	1,311	1,774	35.3%	1,993	35.2%
WESTERN AIR EXPRESS	3	39	1200.0%	60	259	331.7%	262	249.3%
OTHER CARGO	1	2	100.0%	24	20	-16.7%	20	-28.6%
SUBTOTAL CARGO CARRIERS:	842	834	-1.0%	9,096	9,133	0.4%	10,174	0.5%
TOTAL LANDINGS	10,581	9,520	-10.0%	126,569	93,919	-25.8%	105,772	-23.4%
TOTAL LANDED WEIGHT								
SCHEDULED CARRIERS								
AEROMEXICO	2,850,000	-	-100.0%	31,635,000	10,355,000	-67.3%	13,300,000	-61.5%
ALASKA	9,512,960	3,239,900	-65.9%	167,121,138	67,273,524	-59.7%	76,663,924	-57.9%
Horizon Air / Alaska	1,124,355	2,998,280	166.7%	7,420,743	15,666,013	111.1%	16,790,368	126.3%
Skywest / Alaska	15,516,099	9,444,582	-39.1%	157,709,528	124,428,620	-21.1%	141,518,816	-18.3%
AMERICAN	43,681,564	24,627,176	-43.6%	587,325,728	369,042,258	-37.2%	425,684,184	-33.4%
Compass	2,323,450	-	-100.0%	24,208,850	7,644,900	-68.4%	11,092,600	-58.2%
Envoy Air (American)	-	-	0.0%	-	1,049,300	100.0%	1,124,250	1400.0%
American/Mesa Air	-	1,043,400	100.0%	6,306,700	1,043,400	-83.5%	1,043,400	-83.5%
Republic (American)	-	-	0.0%	-	899,400	100.0%	899,400	100.0%
SkyWest (American)	7,102,000	10,854,000	52.8%	85,023,000	75,308,000	-11.4%	82,678,000	-14.4%
DELTA	642,248,685	590,724,252	-8.0%	7,111,699,898	5,374,634,121	-24.4%	6,042,486,478	-21.3%
SkyWest (Delta Connection)	180,654,850	221,084,270	22.4%	2,122,891,836	1,972,541,793	-7.1%	2,209,806,166	-5.5%
Compass (Delta Connection)	14,960,223	-	-100.0%	420,615,315	75,177	-100.0%	1,503,540	-99.7%
FRONTIER	20,107,838	16,779,364	-16.6%	200,364,434	138,940,330	-30.7%	159,481,760	-26.2%
JETBLUE	33,274,800	8,532,000	-74.4%	365,027,400	162,676,800	-55.4%	197,658,000	-50.0%

**SALT LAKE CITY INTERNATIONAL AIRPORT
LANDING ACTIVITY
ELEVEN MONTHS ENDED November 2020**

	November 2019	November 2020	CHANGE	YTD 2019	YTD 2020	CHANGE	12 MO ROLLING Ending 11/2020	% CHANGE
KLM ROYAL DUTCH AIRLINES	-	-	0.0%	36,684,163	-	-100.0%	-	-100.0%
SOUTHWEST	94,240,000	67,360,000	-28.5%	1,293,350,400	860,304,000	-33.5%	957,968,000	-31.9%
UNITED	7,702,660	11,907,260	54.6%	226,054,640	151,392,580	-33.0%	169,897,460	-32.7%
GoJet	4,489,000	-	-100.0%	20,435,000	-	-100.0%	134,000	-99.4%
Express Jet	2,325,000	-	-100.0%	6,803,100	750,000	-89.0%	1,050,000	-84.6%
Mesa / United Express	2,250,000	-	-100.0%	19,425,000	7,350,000	-62.2%	10,950,000	-52.6%
Republic Airways Holdings	3,831,639	-	-100.0%	61,194,916	2,318,986	-96.2%	4,509,506	-93.0%
SkyWest (United Express)	28,587,304	20,346,034	-28.8%	284,399,029	197,391,666	-30.6%	231,979,046	-25.8%
Trans States	-	-	0.0%	-	-	0.0%	-	0.0%
SUBTOTAL SCHEDULED CARRIERS:	1,116,782,427	988,940,518	-11.4%	13,235,695,818	9,541,085,868	-27.9%	10,758,218,898	-25.2%
CHARTER CARRIERS								
ALLEGIAN AIR	-	-	0.0%	1,075,848	-	-100.0%	142,198	-86.8%
BOMBARDIER	635,940	591,259	-7.0%	12,888,308	14,967,321	16.1%	16,839,786	15.8%
BOUTIQUE AIR	-	-	0.0%	-	-	0.0%	-	0.0%
DELTA PRIVATE JETS	-	-	0.0%	-	-	0.0%	-	0.0%
EXECUTIVE JET MANAGEMENT	-	-	0.0%	-	-	0.0%	-	0.0%
FLIGHT OPTIONS	-	-	0.0%	-	-	0.0%	-	0.0%
KALITTA CHARTERS	61,200	77,900	27.3%	1,268,320	1,190,240	-6.2%	1,514,740	19.4%
KEYLIME AIR	126,896	-	-100.0%	438,206	63,448	-85.5%	63,448	-88.1%
MIAMI AIR	146,300	-	-100.0%	731,500	438,900	-40.0%	438,900	-50.0%
NETJETS	2,665,880	2,439,332	-8.5%	40,530,239	39,588,589	-2.3%	44,671,382	0.3%
SIERRA PACIFIC	-	-	0.0%	110,000	220,000	100.0%	220,000	100.0%
SUN COUNTRY	-	-	0.0%	-	-	0.0%	-	0.0%
SWIFT AIR	-	-	0.0%	-	-	0.0%	-	0.0%
VIRGIN AMERICA	-	-	0.0%	-	-	0.0%	-	0.0%
XOJET	-	561,300	100.0%	4,274,700	7,855,200	83.8%	8,533,300	76.6%
OTHER CHARTER	-	-	0.0%	-	-	0.0%	-	0.0%
SUBTOTAL CHARTER CARRIERS:	3,636,216	3,669,791	0.9%	61,317,121	64,323,698	4.9%	72,423,754	6.9%
CARGO CARRIERS								
ABX AIR INC	-	-	0.0%	283,000	-	-	0	-100.0%
AERO CHARTER & TRANSPORT	-	-	0.0%	-	-	0.0%	-	0.0%
AIR TRANSPORT INTERNATIONAL	-	-	0.0%	-	-	0.0%	-	0.0%
ALPINE AVIATION	2,447,300	2,177,800	-11.0%	28,155,400	26,650,900	-5.3%	29,255,000	-4.5%
AMERIFLIGHT	2,490,780	1,476,500	-40.7%	24,101,540	18,848,550	-21.8%	21,549,600	-19.8%
AMERISTAR	-	-	0.0%	121,500	299,700	146.7%	299,700	146.7%
ATLAS AIR	272,000	544,000	100.0%	5,030,000	4,437,000	-11.8%	4,437,000	-29.3%
CORPORATE AIR (BILLINGS)	1,079,500	1,020,000	-5.5%	11,934,000	10,812,000	-9.4%	12,010,500	-7.9%
EMPIRE	658,287	695,107	5.6%	6,568,879	6,342,784	-3.4%	7,037,891	-3.9%
FEDEX EXPRESS	49,304,900	50,556,600	2.5%	539,886,200	562,084,100	4.1%	626,437,300	3.9%
GEM AIR	493,000	605,500	22.8%	4,925,000	5,037,500	2.3%	5,732,000	0.5%
KALITTA AIR	-	-	0.0%	1,304,000	-	-100.0%	-	-100.0%
SOUTHERN AIR INC	2,797,495	-	-100.0%	38,723,032	16,634,980	-57.0%	18,818,778	-57.4%
UPS	38,457,640	49,807,620	29.5%	393,583,060	503,339,740	27.9%	580,438,880	28.7%
WESTERN AIR EXPRESS	39,000	512,000	1212.8%	780,000	3,379,000	333.2%	3,418,000	250.6%
OTHER CARGO	-	-	0.0%	-	-	0.0%	(380,000)	-1900100.0%
SUBTOTAL CARGO CARRIERS:	98,039,902	107,395,127	9.5%	1,055,395,611	1,157,866,254	9.7%	1,309,054,649	9.9%
TOTAL LANDED WEIGHT	1,218,458,545	1,100,005,436	-9.7%	14,352,408,550	10,763,275,820	-25.0%	12,140,077,301	-22.3%

**SALT LAKE CITY INTERNATIONAL AIRPORT
CARGO ACTIVITY REPORT
ELEVEN MONTHS ENDED November 2020**

	November 2019	November 2020	CHANGE	YTD 2019	YTD 2020	CHANGE	12 MO ROLLING Ending 11/2020	% CHANGE
ENPLANED CARGO								
PASSENGER CARRIERS								
ALASKA	19,592	6,000	-69.38%	246,339	104,764	-57.47%	124,812	-51.43%
Horizon Air / Alaska	-	1,427	100.00%	1,179	17,108	1351.06%	17,266	1364.46%
Skywest / Alaska	3,017	5,455	80.81%	16,785	117,921	602.54%	119,377	611.21%
AMERICAN	47,810	2,966	-93.80%	346,986	99,541	-71.31%	118,696	-67.82%
American Eagle/Republic	-	-	0.00%	-	-	0.00%	-	0.00%
Compass	14	-	-100.00%	44	120	172.73%	420	854.55%
Envoy Air (American)	-	-	0.00%	-	-	0.00%	-	0.00%
Mesa	-	-	0.00%	-	-	0.00%	-	0.00%
SkyWest (American)	1,770	1,898	7.23%	7,914	407,069	5043.66%	407,925	5054.47%
DELTA	519,289	310,578	-40.19%	6,827,035	4,053,132	-40.63%	4,828,057	-37.04%
KLM ROYAL DUTCH	-	-	0.00%	1,041,237	-	-100.00%	-	-100.00%
SOUTHWEST	318,216	260,288	-18.20%	3,546,521	2,121,379	-40.18%	2,353,594	-38.30%
UNITED	6,883	6,298	-8.50%	61,866	55,285	-10.64%	71,684	5.28%
Others	-	-	0.00%	1,100	44,293	3926.64%	83,533	7493.91%
CARGO CARRIERS								
FEDEX EXPRESS*	8,756,039	9,716,496	10.97%	96,202,221	107,496,592	11.74%	118,180,850	12.24%
GEM AIR	-	80,944	100.00%	637,400	854,779	34.10%	952,031	30.30%
SOUTHERN AIR	15,956	-	-100.00%	1,656,209	251,000	-84.84%	257,421	-87.61%
UPS	4,765,935	5,794,625	21.58%	54,438,917	60,664,287	11.44%	68,492,042	12.23%
MISC CARGO	954,625	938,593	-1.68%	10,942,944	10,704,329	-2.18%	11,755,813	-4.56%
ABX AIR	-	-	0.00%	-	-	0.00%	-	-100.00%
TOTAL ENPLANED CARGO	15,409,146	17,125,568	11.14%	175,974,697	186,991,599	6.26%	207,763,521	6.71%
DEPLANED CARGO								
PASSENGER CARRIERS								
ALASKA	17,175	5,161	-69.95%	272,716	62,210	-77.19%	73,141	-74.22%
Horizon Air / Alaska	959	2,394	149.64%	5,740	24,769	331.52%	24,859	333.08%
Skywest / Alaska	5,578	2,865	-48.64%	41,195	88,178	114.05%	97,637	137.01%
AMERICAN	23,901	39,416	64.91%	256,262	257,781	0.59%	278,391	-2.03%
American Eagle/Republic	-	-	0.00%	-	-	0.00%	-	0.00%
Compass	78	-	-100.00%	366	187	-48.91%	257	-29.78%
Envoy Air (American)	-	-	0.00%	-	-	0.00%	-	0.00%
SkyWest (American)	433	1,532	253.81%	4,910	10,595	115.78%	11,151	75.66%
DELTA	853,198	417,895	-51.02%	9,746,109	5,530,466	-43.25%	6,466,973	-41.32%
KLM ROYAL DUTCH	-	-	0.00%	1,253,539	-	-100.00%	-	-100.00%
SOUTHWEST	414,400	311,454	-24.84%	4,598,266	3,015,048	-34.43%	3,405,715	-32.32%
UNITED	27,338	15,796	-42.22%	379,537	130,628	-65.58%	177,462	-59.24%
Others	4,902	7,919	61.55%	36,889	149,231	304.54%	216,289	486.32%
CARGO CARRIERS								
FEDEX EXPRESS*	7,988,151	8,604,178	7.71%	90,494,590	92,813,001	2.56%	101,892,164	1.91%
GEM AIR	-	19,305	100.00%	249,004	239,848	-3.68%	252,714	-5.06%
SOUTHERN AIR	250,189	-	-100.00%	2,699,557	1,688,688	-37.45%	1,881,664	-41.22%
UPS	6,866,518	7,080,724	3.12%	70,332,922	78,883,707	12.16%	88,264,171	12.96%
MISC CARGO	412,393	512,442	24.26%	4,373,378	4,534,093	3.67%	4,908,918	-8.88%
ABX AIR	-	-	0.00%	5,745	-	-100.00%	-	-100.00%
TOTAL DEPLANED CARGO	16,865,213	17,021,081	0.92%	184,744,980	187,428,430	1.45%	207,951,506	1.25%
TOTAL CARGO	32,274,359	34,146,649	5.80%	360,719,677	374,420,029	3.80%	415,715,027	3.91%

*FEDEX EXPRESS includes mail



Salt Lake City
Department of Airports

COMPARISON OF ON TIME OPERATIONS
August 2020

ARRIVALS

Airport	Flights	% On Time	Rank
LAX LOS ANGELES INTL	9,560	93.9	1
MDW CHICAGO MIDWAY	5,525	93.6	2
PHX PHOENIX SKY HARBOR INTL	9,191	93.6	3
SAN SAN DIEGO LINDBERGH FIELD	4,487	93.6	4
LAS LAS VEGAS MCCARRAN INTL	9,496	93.3	5
SEA SEATTLE-TACOMA INTL	12,345	93.0	6
MSP MINNEAPOLIS-ST. PAUL INTL	8,854	92.9	7
BOS BOSTON LOGAN INTL	4,894	92.8	8
PDX PORTLAND INTL	4,173	92.8	9
ORD CHICAGO O HARE	18,285	92.7	10
DTW DETROIT METRO WAYNE CNTY	9,333	92.6	11
SLC SALT LAKE CITY INTL	8,404	92.3	12
MIA MIAMI INTL	3,605	92.1	13
SFO SAN FRANCISCO INTL	6,715	92.1	14
DEN DENVER INTL	18,168	91.8	15
LGA NEW YORK LAGUARDIA	3,807	91.5	16
DCA RONALD REAGAN NATIONAL	4,473	91.4	17
BWI BALTIMORE/WASHINGTON INTL	6,472	91.3	18
TPA TAMPA INTL	3,662	90.9	19
ATL HARTSFIELD-JACKSON ATLANTA INTL	21,792	90.8	20
MCO ORLANDO INTL	6,465	90.8	21
PHL PHILADELPHIA INTL	8,068	90.3	22
EWR NEWARK LIBERTY INTERNATIONAL	5,364	89.7	23
IAD WASHINGTON DULLES	4,539	89.4	24
JFK NEW YORK JFK INTL	3,440	89.0	25
FLL FT. LAUDERDALE	3,985	88.6	26
IAH HOUSTON GEORGE BUSH	7,747	88.6	27
HNL HONOLULU	2,390	88.5	28
DFW DALLAS-FT. WORTH REGIONAL	19,447	87.4	29
CLT CHARLOTTE DOUGLAS	14,711	87.2	30
AVERAGES	8,313	91.3	

DEPARTURES

Airport	Flights	% On Time	Rank
SAN SAN DIEGO LINDBERGH FIELD	4,392	95.7	1
PDX PORTLAND INTERNATIONAL	2,836	95.1	2
SEA SEATTLE-TACOMA INTL	9,101	94.4	3
PHX PHOENIX SKY HARBOR INTL	9,002	94.2	4
LAX LOS ANGELES INTL	9,445	94.1	5
MSP MINNEAPOLIS-ST. PAUL INTL	8,858	94.1	6
BOS BOSTON LOGAN INTERNATIONAL	4,892	94.0	7
ORD CHICAGO O HARE	16,142	93.8	8
MIA MIAMI INTL	3,607	93.7	9
SFO SAN FRANCISCO INTL	6,493	93.1	10
SLC SALT LAKE CITY INTL	8,348	93.0	11
DCA RONALD REAGAN NATIONAL	4,331	92.8	12
LGA NEW YORK LAGUARDIA	3,810	92.6	13
LAS LAS VEGAS MCCARRAN INTL	9,276	92.4	14
JFK NEW YORK JFK INTL	3,437	92.3	15
DEN DENVER INTERNATIONAL	18,205	92.2	16
PHL PHILADELPHIA INTL	6,646	92.2	17
DTW DETROIT METRO WAYNE CNTY	9,336	92.0	18
MDW CHICAGO MIDWAY	5,520	92.0	19
EWR NEWARK LIBERTY INTERNATIONAL	5,140	91.2	20
ATL HARTSFIELD-JACKSON ATLANTA INTL	21,820	91.1	21
DFW DALLAS-FT. WORTH REGIONAL	19,440	91.1	22
IAD WASHINGTON DULLES	3,495	91.1	23
FLL FT. LAUDERDALE	3,990	90.6	24
TPA TAMPA INTERNATIONAL	3,671	90.4	25
BWI BALTIMORE/WASHINGTON INTL	6,466	90.3	26
IAH HOUSTON GEORGE BUSH	7,750	89.8	27
MCO ORLANDO INTL	6,470	89.7	28
CLT CHARLOTTE DOUGLAS	13,753	89.6	29
HNL HONOLULU	2,175	89.0	30
AVERAGES	7,928	92.3	

ON TIME ARRIVAL PERFORMANCE AT SLC

By Carrier

Air Carrier	Flights	% On Time
WN SOUTHWEST	665	95.5%
UA UNITED	285	94.7%
B6 JETBLUE	88	94.3%
DL DELTA	6,719	92.2%
AA AMERICAN	302	90.1%
AS ALASKA	247	86.2%
F9 FRONTIER	98	85.7%
AVERAGES	8,404	92.3%

Source: DOT Air Travel Consumer Report



Salt Lake City
Department of Airports

COMPARISON OF ON TIME OPERATIONS
September 2020

ARRIVALS

Airport	Flights	% On Time	Rank
LGA NEW YORK LAGUARDIA	3,285	96.2	1
BOS BOSTON LOGAN INTL	3,844	96.0	2
ATL HARTSFIELD-JACKSON ATLANTA INTL	20,185	95.9	3
DCA RONALD REAGAN NATIONAL	3,126	95.8	4
JFK NEW YORK JFK INTL	3,063	95.7	5
BWI BALTIMORE/WASHINGTON INTL	5,267	95.6	6
MSP MINNEAPOLIS-ST. PAUL INTL	8,135	95.3	7
LAX LOS ANGELES INTL	8,354	95.2	8
MDW CHICAGO MIDWAY	4,290	95.1	9
DTW DETROIT METRO WAYNE CNTY	8,514	94.8	10
HNL HONOLULU	1,611	94.8	11
LAS LAS VEGAS MCCARRAN INTL	8,047	94.7	12
PHL PHILADELPHIA INTL	5,403	94.6	13
SFO SAN FRANCISCO INTL	6,042	94.4	14
PHX PHOENIX SKY HARBOR INTL	8,731	94.3	15
ORD CHICAGO O HARE	16,709	94.2	16
EWK NEWARK LIBERTY INTERNATIONAL	4,394	94.1	17
SAN SAN DIEGO LINDBERGH FIELD	3,419	94.0	18
IAD WASHINGTON DULLES	4,339	93.3	19
DEN DENVER INTL	15,985	93.2	20
CLT CHARLOTTE DOUGLAS	14,442	93.0	21
MCO ORLANDO INTL	5,242	92.3	22
SEA SEATTLE-TACOMA INTL	11,348	92.2	23
FLL FT. LAUDERDALE	3,213	92.0	24
IAH HOUSTON GEORGE BUSH	7,195	92.0	25
SLC SALT LAKE CITY INTL	7,727	92.0	26
MIA MIAMI INTL	2,937	91.8	27
TPA TAMPA INTL	2,752	91.7	28
PDX PORTLAND INTL	3,918	89.8	29
DFW DALLAS-FT. WORTH REGIONAL	17,725	84.6	30
AVERAGES	7,308	93.6	

DEPARTURES

Airport	Flights	% On Time	Rank
BOS BOSTON LOGAN INTERNATIONAL	3,857	96.5	1
MSP MINNEAPOLIS-ST. PAUL INTL	8,150	96.3	2
LGA NEW YORK LAGUARDIA	3,286	96.2	3
DCA RONALD REAGAN NATIONAL	2,974	95.9	4
PHL PHILADELPHIA INTL	4,567	95.8	5
JFK NEW YORK JFK INTL	3,066	95.7	6
SAN SAN DIEGO LINDBERGH FIELD	3,303	95.6	7
HNL HONOLULU	1,458	95.3	8
DTW DETROIT METRO WAYNE CNTY	8,449	95.2	9
ATL HARTSFIELD-JACKSON ATLANTA INTL	20,192	95.1	10
EWK NEWARK LIBERTY INTERNATIONAL	3,956	95.0	11
ORD CHICAGO O HARE	13,895	95.0	12
LAX LOS ANGELES INTL	8,264	94.9	13
SEA SEATTLE-TACOMA INTL	8,340	94.9	14
CLT CHARLOTTE DOUGLAS	13,457	94.4	15
PHX PHOENIX SKY HARBOR INTL	8,618	94.3	16
SFO SAN FRANCISCO INTL	5,863	94.0	17
PDX PORTLAND INTERNATIONAL	2,551	93.5	18
IAD WASHINGTON DULLES	3,056	93.2	19
FLL FT. LAUDERDALE	3,209	93.1	20
LAS LAS VEGAS MCCARRAN INTL	7,922	92.9	21
DEN DENVER INTERNATIONAL	15,966	92.8	22
MDW CHICAGO MIDWAY	4,285	92.6	23
IAH HOUSTON GEORGE BUSH	7,180	92.5	24
BWI BALTIMORE/WASHINGTON INTL	5,265	92.3	25
SLC SALT LAKE CITY INTL	7,696	92.1	26
MIA MIAMI INTL	2,940	91.9	27
MCO ORLANDO INTL	5,248	91.8	28
TPA TAMPA INTERNATIONAL	2,750	91.8	29
DFW DALLAS-FT. WORTH REGIONAL	17,709	88.6	30
AVERAGES	6,916	94.0	

ON TIME ARRIVAL PERFORMANCE AT SLC

By Carrier

Air Carrier	Flights	% On Time
UA UNITED	260	96.5%
WN SOUTHWEST	448	94.6%
F9 FRONTIER	92	93.5%
B6 JETBLUE	43	93.0%
DL DELTA	6,388	91.9%
AS ALASKA	180	88.9%
AA AMERICAN	316	88.6%
	8,404	92.3%

Source: DOT Air Travel Consumer Report



Salt Lake City
Department of Airports

COMPARISON OF ON TIME OPERATIONS
October 2020

ARRIVALS

Airport	Flights	% On Time	Rank
MDW CHICAGO MIDWAY	4,454	96.4	1
BWI BALTIMORE/WASHINGTON INTL	5,353	96.1	2
LGA NEW YORK LAGUARDIA	3,286	95.7	3
DCA RONALD REAGAN NATIONAL	2,980	95.1	4
BOS BOSTON LOGAN INTL	4,358	95.0	5
ATL HARTSFIELD-JACKSON ATLANTA INTL	21,414	94.7	6
JFK NEW YORK JFK INTL	3,523	94.3	7
DTW DETROIT METRO WAYNE CNTY	9,018	94.1	8
EWR NEWARK LIBERTY INTERNATIONAL	4,946	93.5	9
SFO SAN FRANCISCO INTL	6,207	93.3	10
LAX LOS ANGELES INTL	9,040	92.9	11
IAD WASHINGTON DULLES	3,374	92.8	12
MCO ORLANDO INTL	6,676	92.7	13
MSP MINNEAPOLIS-ST. PAUL INTL	8,659	92.5	14
PHX PHOENIX SKY HARBOR INTL	9,482	92.1	15
SAN SAN DIEGO LINDBERGH FIELD	3,435	92.1	16
CLT CHARLOTTE DOUGLAS	14,461	92.0	17
TPA TAMPA INTL	3,390	91.7	18
SLC SALT LAKE CITY INTL	8,222	91.6	19
IAH HOUSTON GEORGE BUSH	7,100	91.5	20
LAS LAS VEGAS MCCARRAN INTL	8,998	91.2	21
ORD CHICAGO O HARE	13,549	91.2	22
PHL PHILADELPHIA INTL	4,924	91.1	23
SEA SEATTLE-TACOMA INTL	9,002	90.4	24
PDX PORTLAND INTL	2,901	89.4	25
DEN DENVER INTL	18,067	89.1	26
MIA MIAMI INTL	3,170	88.7	27
FLL FT. LAUDERDALE	4,253	86.8	28
HNL HONOLULU	2,214	81.1	29
DFW DALLAS-FT. WORTH REGIONAL	19,212	81.0	30
AVERAGES	7,522	91.7	

DEPARTURES

Airport	Flights	% On Time	Rank
DCA RONALD REAGAN NATIONAL	2,977	96.7	1
LGA NEW YORK LAGUARDIA	3,288	95.4	2
BOS BOSTON LOGAN INTERNATIONAL	4,362	94.9	3
JFK NEW YORK JFK INTL	3,534	94.9	4
BWI BALTIMORE/WASHINGTON INTL	5,361	94.7	5
DTW DETROIT METRO WAYNE CNTY	9,014	94.5	6
LAX LOS ANGELES INTL	9,041	94.4	7
ATL HARTSFIELD-JACKSON ATLANTA INTL	21,392	94.3	8
MDW CHICAGO MIDWAY	4,449	94.3	9
MSP MINNEAPOLIS-ST. PAUL INTL	8,654	94.2	10
TPA TAMPA INTERNATIONAL	3,390	94.1	11
PDX PORTLAND INTERNATIONAL	2,903	93.9	12
SEA SEATTLE-TACOMA INTL	8,995	93.8	13
CLT CHARLOTTE DOUGLAS	14,467	93.7	14
SAN SAN DIEGO LINDBERGH FIELD	3,437	93.7	15
IAH HOUSTON GEORGE BUSH	7,112	93.6	16
SFO SAN FRANCISCO INTL	6,214	93.6	17
MCO ORLANDO INTL	6,685	93.4	18
PHX PHOENIX SKY HARBOR INTL	9,482	93.4	19
IAD WASHINGTON DULLES	3,378	93.3	20
PHL PHILADELPHIA INTL	4,929	93.3	21
SLC SALT LAKE CITY INTL	8,204	93.3	22
ORD CHICAGO O HARE	13,576	92.6	23
EWR NEWARK LIBERTY INTERNATIONAL	4,960	92.5	24
LAS LAS VEGAS MCCARRAN INTL	8,982	92.0	25
MIA MIAMI INTL	3,163	91.1	26
FLL FT. LAUDERDALE	4,248	89.6	27
DEN DENVER INTERNATIONAL	18,094	89.3	28
DFW DALLAS-FT. WORTH REGIONAL	19,211	85.0	29
HNL HONOLULU	2,209	81.7	30
AVERAGES	7,524	92.8	

ON TIME ARRIVAL PERFORMANCE AT SLC

By Carrier

Air Carrier	Flights	% On Time
WN SOUTHWEST	445	94.6%
UA UNITED	79	92.4%
DL DELTA	3,577	92.0%
B6 JETBLUE	59	89.8%
F9 FRONTIER	114	89.5%
AA AMERICAN	206	86.4%
AS ALASKA	28	78.6%
	8,404	92.3%

Source: DOT Air Travel Consumer Report

DESIGN AND CONSTRUCTION REPORT

TABLE OF CONTENTS

- I. Area Map of Project Locations
- II. Project Schedule
- III. Construction Analysis
- IV. Design and Construction Report

SALT LAKE CITY DEPARTMENT OF AIRPORTS

January 7, 2021



Salt Lake City
International Airport

2020 - 2021 Project Legend

Airfield

1. Pump House No. 1 Reconstruction
2. Taxiway E Reconstruction

Landside

3. Parking Lot E Pedestrian Canopy
4. Airport Operations Center Canopy
5. QTA Deck Coating
6. Glycol Plant & Wildlife Services Office Bldg.

SALT LAKE CITY INTERNATIONAL AIRPORT
CONSTRUCTION PROGRAM
2020/2021 Construction Schedule

ID	Task Name	Start	Finish	November 21			December 11			January 1			Janua
				11/22	11/29	12/6	12/13	12/20	12/27	1/3	1/10	1/17	1/24
1	Project Title	Wed 2/5/20	Thu 4/29/21										
2	(1) Pump House No. 1 Reconstruction	Wed 2/5/20	Sat 11/14/20										
3	(2) Taxiway E Reconstruction	Mon 5/4/20	Wed 11/18/20										
4	(3) Parking Lot E Pedestrian Canopy	Fri 6/12/20	Fri 1/29/21										
5	(4) Airport Operations Center Canopy	Fri 6/12/20	Fri 1/29/21										
6	(5) Quick Turn Around (QTA) Deck Coating	Thu 10/1/20	Fri 12/4/20										
7	(6) Glycol Plant & Wildlife Services Office Bldg.	Thu 9/17/20	Thu 4/29/21										

Project: Microsoft Project - 3-13-2
Date: Tue 1/12/21

DESIGN		Inactive Milestone		Manual Summary	
CONSTRUCTION		Inactive Summary		Start-only	
SCOPING		Manual Task		Finish-only	
SUMMARY		Duration-only		Deadline	
Inactive Task		Manual Summary Rollup			

DESIGN AND CONSTRUCTION REPORT

CONSTRUCTION

- (1) **Pump House No. 1 Reconstruction** - Installation of the electrical gear is currently taking place. Commissioning of the pumps will begin as soon as the electrical equipment has been installed and tested.
- (2) **Taxiway E Reconstruction** - The Contractor was issued substantial completion for this project on November 18, 2020. All punch list items have been completed.
- (3) **Parking Lot E Pedestrian Canopy** - The Contractor is currently installing the glass screen walls. Final painting of the underside of the canopy will be delayed until the spring due to weather. A final walk through will take place mid-January 2021.
- (4) **Airport Operations Center Canopy** - The canopy has been completed and a final walk through will take place mid-January 2021.
- (5) **Quick Turn Around (QTA) Deck Coating** - The Contractor and consultants have determined that the structural repair work is more extensive than previously determined. The structural beams have been shored to prevent any additional damage and the Contractor will continue repair work in spring of 2021.
- (6) **Glycol Plant and Wildlife Services Office Building** - The Contractor is erecting the structure and the main beams. The roof deck is being installed and the exterior materials are on site.



Advisory Board Meeting

January 20, 2021

Media Clippings

<https://slairport.com/assets/pdfDocuments/AABoard/Jan1ClippingPacket2021.pdf>

Compiled by the Communication & Marketing Dept.