

DEPARTMENT OF AIRPORTS  
BOARD MEETING

16 January 2019

AGENDA



Salt Lake City  
Department of Airports

**SALT LAKE CITY DEPARTMENT OF AIRPORTS  
BOARD MEETING AGENDA**

16 January 2019

8:00 A.M.

CONSENT AGENDA

- A. Minutes of the 14 November 2018 Meeting

DISCUSSION ITEMS

- B. Director's Report – Bill Wyatt, Executive Director, SLCDCA
- C. Airport Redevelopment Program (ARP) Update – Mike Williams, ARP Director, SLCDCA
- D. Public Meetings Training - Marco Kunz, Senior City Attorney
- E. Ambassador Program – Nancy Anthon, Operations Manager Customer Service
- F. Election of Board Chair and Vice-Chair

INFORMATION ITEMS

- A. Financial Report – November 2018
- B. Air Traffic Statistics – November 2018
- C. Comparison of On-Time Operations – October 2018
- D. Construction Report – January 2019
- E. Media Clippings – January 2019

The next meeting will be held on **Wednesday, February 20, 2019**, at 8:00 a.m. Meetings are held in the Board Room located on the third level of the short-term parking garage. People with disabilities may make requests for reasonable accommodations no later than 48 hours in advance in order to attend this [Airport Board Meeting](#). Accommodations may include alternate formats, interpreters, and other auxiliary aids. This is an accessible facility. For questions or additional information, please contact [LuJean Christensen](#) at [801-575-2096](tel:801-575-2096).

DEPARTMENT OF AIRPORTS  
BOARD MEETING

16 January 2019

MINUTES

# SALT LAKE CITY DEPARTMENT OF AIRPORTS MINUTES OF ADVISORY BOARD MEETING

November 14, 2018

Members Present:           Cyndy Miller, Acting Chair  
                                  Wade Bitner  
                                  Roger Boyer  
                                  Theresa Foxley  
                                  J.T. Martin  
                                  Steve Price  
                                  Jim Riding

Excused:                    Arlyn Bradshaw  
                                  Theresa Foxley  
                                  Larry Pinnock  
                                  Karen Mayne

Department of Airports:   Bill Wyatt, Executive Director  
                                  Treber Andersen, Operations Superintendent  
                                  Shaun Anderson, Financial Manager  
                                  Phil Bevan, Property Specialist  
                                  John Buckner, Director of Administration & Commercial Services  
                                  Ed Cherry, Chief Information Officer  
                                  LuJean Christensen, Administrative Assistant  
                                  Ed Clayson, Director of Maintenance  
                                  Kristen Elder, Management Analyst  
                                  Elenor Gomberg, Public Relations Marketing Coordinator  
                                  Pete Higgins, Operations  
                                  Dave Korzep, Operations Superintendent  
                                  Marco Kunz, Attorney  
                                  Kevin Robins, Director of Engineering  
                                  Al Stuart, Operations Superintendent  
                                  Ryan Tesch, Director of Planning & Environmental  
                                  Craig Vargo, Police  
                                  Mike Williams, ARP Program Director

Cyndy Miller called the meeting to order at 8:00 am.

## AGENDA

### **A. Minutes**

The motion was made by Roger Boyer and seconded by J.T. Martin to approve the minutes of October 24, 2018 as presented. All votes were affirmative; motion passed.

## AGENDA

### **B. Director's Report**

Bill Wyatt, Executive Director, updated the Airport Advisory Board regarding current events.

- Wyatt informed the Board that the Olympic Selection Committee would be in town today.
- Wyatt informed the Board that the second tranche of bonds had been issued for \$850 million.
- Wyatt stated that the travel website "Points Guy" announced their annual ranking of the "World's Most Punctual Airports" and Salt Lake City ranked second.
- Wyatt stated that the work continues on the expansion and design of the Customs and Border Protection (CBP) area in the TRP.

### **C. Distinguished Service Award Presentation**

Wyatt acknowledged Al Stuart's illustrious 38 year career and contributions to the Airport and the airline industry. Wyatt introduced Jeanne Olivier, Chair, American Association of Airport Executives (AAAE), and Assistant Director of Aviation Security Operations at the Port Authority of New York & New Jersey. Olivier presented the AAAE distinguished service award to Al Stuart, Operations Superintendent, SLCDA. Stuart stated that this was a tremendous honor to receive and he couldn't have accomplish this without the support of the Airport.

### **D. Federal Airport Revenue-Use Rules**

Scott Lewis, Partner, Anderson & Kreiger LLP, presented information regarding the Federal airport revenue-use rules (presentation on file). Main points included were:

- Statutory restrictions on the use of airport revenue
- Statutory obligation to be financially self-sustaining
- 1994 FAA Authorization Act
- USDOT final policy on airport revenue use
- What is "airport revenue"
- Permitted uses for airport revenue
- Cost allocations
- Standards of documentation
- Prohibited uses
- Self-sustaining
- Sanctions/Administrative enforcement
- Current issues at Salt Lake City

Martin wondered if a nonprofit organization requested space to provide flu shots to the traveling public would they have to pay fair market value (FMV) for the space they occupied. Lewis responded that it would have nothing to do with the Airport but would be a public service.

Lewis answered that it would not technically be compliant but if they were here for a week or two, occupying sixty feet of space, serving the public health mission and not making any money, the odds of anyone taking issue would be very small.

Martin asked if the sales tax collected here would be airport revenue. Lewis stated that sales tax would not be classified as airport revenue because they are a tax of general application. The taxes that the City or State collect on jet fuel are fuel taxes which are governed by separated rules and regulations. Fuel taxes are Airport revenue and have to be used for aviation purposes. Parking taxes are a tax on an Airport activity also.

Roger Boyer stated that in October he read an article regarding David Shipley wanting to reopen Wingpointe. The article discussed the expense related to reopening the golf course and wanted to be updated on this issue. Wyatt answered that Wingpointe was a subject of the audit in 2013 by the FAA. As a result of the audit the FAA found that the lease the Airport had with the City was not based on fair market value. In response to the FAA the City stated they couldn't afford to pay FMV. The FAA gave the City 5 years to rectify the situation. The rate the City paid increased every year. The City could not operate the golf course and last year the City terminated the lease. Subsequently the Shipley group got together to raise money to try to reopen Wingpointe. To reopen the golf course would be very expensive. There are two cost issues which hurt the reopening of Wingpointe from a business plan perspective 1) the payment of fair market value for the land and 2) the expense of water. The group went to Congressmen Stewart, who then successfully amended the FAA authorization to address the question of FMV and there is a debate on whether what transpired accomplishes what they wanted to accomplish. A couple of issues that it might not address are the contractual obligation the City signed with the FAA stating that they would pay FMV and that contract goes until 2022. When the original golf course was constructed the City requested authority to alter the levy with the condition the City would fix the levy in a different way and location. The City did the first part but not the second. Since the City altered the levy it is now required to fix the levy which will be \$5 – 7 million to repair. Another issue is the bridge to the Wingpointe property is now weight constrained and is substandard so it will need to be replaced. The cost of replacing the bridge will be expensive.

#### **E. Year-End Financial Audit**

Ryan Tesch, Director of Finance, presented the FY2018 Year-End Audit Financial Report to the Board (presentation on file). Main points included were:

- FY2018 Financial and operational highlights
- Total passenger traffic
- Costs per enplaned passenger
- Budget comparison
- Airline and non-airline revenues
- Sources and uses of funds for the Series 2018 Bonds

Ryan introduced Paul Skeen, audit partner at Eide Bailly, LLP. Skeen reported no findings, no uncorrected misstatements or errors and no disagreements with management for the Airport's Comprehensive Annual Financial Report.

**F. Terminal Redevelopment Program (TRP) Update – Mike Williams, ARP Director, SLCDA**

Mike Williams, Airport Redevelopment Program (ARP) Director, presented an update on the ARP (presentation on file). Main points included were:

- Job Progress Photos – Terminal Building & Gateway
- Job Progress Photos – South Concourse West
- Job Progress Photos – Parking Garage, Roadways, CUP
- Job Progress Photos – Airfield & Fueling
- Job Progress Photos – North Concourse
- Project statistics
- Near term schedule
- Overall Airport Redevelopment Program budget

Martin asked when the work force would start declining on the project. Williams answered that the work force would peak in 2019 and in mid-2020 would start declining.

**G. Nominations for Board Chair and Vice-Chair**

Cyndy Miller opened the floor to nominations for Chair. Roger Boyer nominated Cyndy Miller as Airport Advisory Board Chair for 2019. A motion was made by Roger Boyer and seconded by Jim Riding that nominations for Board Chair be closed. All votes were affirmative; motion passed.

Cyndy Miller opened the floor to nominations for Vice-Chair. Theresa Foxley nominated Steve Price as Airport Advisory Board Vice-Chair for 2019. A motion was made by Theresa Foxley and seconded by Wade Bitner that nominations for Board Vice-Chair be closed. All votes were affirmative; motion passed.

Voting by acclamation will be conducted at the January Advisory Board meeting, scheduled on 16 January 2019.

Cyndy Miller adjourned the meeting at 9:45 a.m.

\_\_\_\_\_  
Larry Pinnock, Chair

\_\_\_\_\_  
Date

\_\_\_\_\_  
Jacqueline M. Biskupski, Mayor

\_\_\_\_\_  
Date

DEPARTMENT OF AIRPORTS  
BOARD MEETING

16 January 2019

DISCUSSION ITEMS



## SALT LAKE CITY AIRPORT BOARD

**AGENDA:** DISCUSSION ITEM (B)  
**DATE:** 16 January 2019  
**TO:** Airport Board  
**FROM:** Bill Wyatt, Executive Director  
**SUBJECT:** **Executive Director's Report**

---

Bill Wyatt will present a monthly informational report to the Board, may include:

1. ARP progress
2. Ground transportation update
3. Concessions and rental cars
4. Airport safety and security
5. Airport facilities and operations
6. General aviation
7. Passenger and airport users
8. Environmental matters
9. Financial condition
10. Legislative issues
11. Airlines
12. Communications and marketing

## SALT LAKE CITY AIRPORT BOARD

**AGENDA:** DISCUSSION ITEM (C)  
**DATE:** 16 January 2019  
**TO:** Airport Board  
**FROM:** Bill Wyatt, Executive Director  
**SUBJECT:** **Airport Redevelopment Program Update**

---

Mike Williams, Airport Redevelopment Program (ARP) Director, will present an update on the SLC Airport Redevelopment Program (presentation on file).

# ***Airport Redevelopment Program***

***Status Update: 01-16-2019***



**Salt Lake City International Airport**



UNIVERSITY • RECREATION • TECHNOLOGY

# CGMP# 4 – Landside and Airside Enabling

**Project: CGMP# 4 - Landside and Airside Enabling**

**CGMP Original NTE: \$81.09M**  
**CGMP Revision: (\$1.57M) NTE: \$79.52M**  
**CGMP Current NTE: \$79.52M EAC: \$76.4M**

**Terminal/South Concourse West/Gateway/Roadways/Airside and Landside Enabling and Central Utility Plant Hydronic Piping**

**Current Status**

Schedule		Recent Milestones Achieved
Activity	Target Date	
Complete Seq 2 Tunnel Excavation	Dec 2016 A	<p><b>* Mid-Concourse Tunnel backfill complete.</b></p> <p><b>* Final CGMP Close-out Dependent on utility scope delayed by tunnel work.</b></p>
Complete SCW Surgecharge	Dec 2016 A	
Complete West Lift Station Pumps	Mar 2017 A	
Complete SCW Ductbank	Mar 2017 A	
Complete Gateway Hydronic Piping	May 2017 A	
Final Completion	Mar 2019	

**Concerns/Issues/Risks**

**\* None at this time**



# CGMP# 5 – Terminal/South Concourse West/Gateway

Project: CGMP# 5 - Terminal/Gateway/SCW

CGMP Original NTE: \$795.35M  
 CGMP Revision: (\$7.00M) NTE: \$788.35M  
 CGMP Revision: \$7.04M NTE: \$795.39M  
 CGMP Revision: \$33.07M EAC: \$828.46M  
 CGMP Current: \$29.9M EAC: \$858.46M

Terminal/Gateway/South Concourse West - Foundations, Structure, Building Envelope and Build-out

## Schedule

Activity	Target Date
Complete Terminal Foundations	Feb 2018 A
Complete Terminal Structural Stl	Jul 2018 A
Complete SCW Temporary Dry-in	Sep 2018 A
Term Mech Rms Ready for Equip	Nov 2018 A
SCW Mech Rms Ready for Equip	Dec 2018 A
Gateway Structure Complete	Apr 2019

## Recent Milestones Achieved

- \* Terminal Roofing nearing completion at south end.
- \* Terminal Glazing and Metal Panel Continues.
- \*SCE (A Nub) Concrete Deck Pours underway.
- \*SCW Terrazzo and Ceiling Grid Progressing.
- \* Terminal Plaza High Bay Ceiling MEP and Finishes Progressing towards January Punchlist.
- \* CBP Expansion Pile Driving started.

## Concerns/Issues/Risks

- \* Impact of Scope Change Changes.
- \* Timely decisions required to support ongoing Construction activities for Ticket Lobby and Gateway Lobby.



# CGMP# 6 – Roadways/Parking Garage/Central Utility Plant

**Project: CGMP# 6 - Parking Garage/Roadways/Central Utility Plant/Project-Wide Special Systems**

**CGMP Original NTE: \$363.86M**  
**CGMP Rev: (\$4.37M) NTE: \$359.49M**  
**CGMP Revision: \$2.49M NTE: \$361.98M**  
**CGMP Current: \$7.76M NTE: \$369.74M**

**Parking Garage/Rental Car Ready Return/Elevated and At-Grade Roadways/Central Utility Plant/Project-Wide IT and Special Systems**

Schedule		Recent Milestones Achieved
Activity	Target Date	
Complete CUP Chiller Installation	Dec 2017 A	<ul style="list-style-type: none"> <li>* Parking Garage South side Concrete placement progressing.</li> <li>* Elevated Roadway Decking underway at Terminal Entrance - Deck pours continue.</li> <li>* CUP Equipment Testing and Commissioning activities continue.</li> <li>* CUP Hydronic Lines Fill/Flush complete.</li> </ul>
CUP Dry-in	Mar 2018 A	
CUP Permanent Power available	Mar 2018 A	
Deliver Elevated Roadway Girders	Mar 2018 A	
CUP Operational for Testing	Jul 2018 A	
Parking Garage Roofing Complete	Aug 2019	
Concerns/Issues/Risks		



# CGMP# 7 – Baggage Handling System

Project: CGMP# 7 - Baggage Handling System including TSA Screening Area

CGMP Original NTE: \$86.09M  
 CGMP Current: \$1.25M NTE: \$87.34M  
 CGMP Pending: \$12.22M NTE: \$99.56M

Terminal/Gateway/South Concourse West and TSA Screening Area Complete Baggage Handling System IT and Special Systems

## Schedule

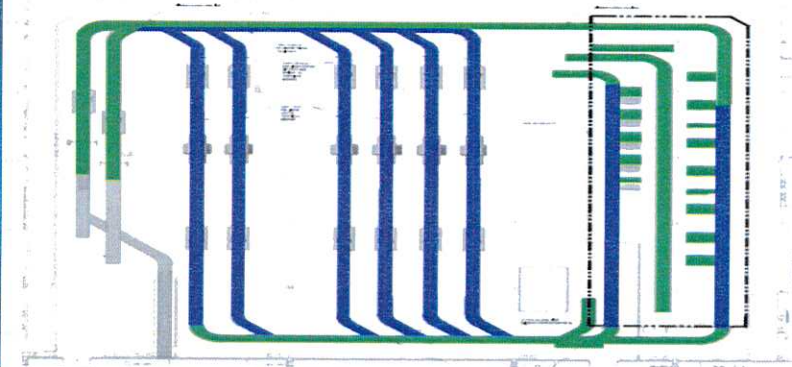
Activity	Target Date
Issue NTP	Sep 2016 A
Start BHS Hanger Installation	Aug 2017 A
Install TSA Provided Equipment	Jun 2019
Start BHS Testing/Commissioning	Nov 2019
Start TSA BHS Acceptance Tests	Mar 2020
BHS Substantial Completion	May 2020

## Recent Milestones Achieved

- \* BHS SCW Make-up Electrical and Controls Installations underway.
- \* BHS Terminal CBIS (TSA Screening) Room Conveyor installation progressing.
- \* Next Major Milestone - Delivery of EDS Machines at the end of March.
- \* Detailed Vanderlande Schedule and Manpower review underway.

## Concerns/Issues/Risks

- \* Electrical installation labor availability.



# CGMP# 9 – Apron Paving – Taxilane 20/21

Project: CGMP# 9 - Apron Paving - Taxilane 20/21 and Taxiway A/B

CGMP Original NTE: \$26.76M  
 CGMP Revision: (\$1.09M) NTE: \$25.67M  
 CGMP Current NTE: \$25.67M EAC: \$22.45M

Initial Portion of Apron Paving that will Utilize \$10 million in AIP Funding and also Support Fence Installation for North Concourse Site.

## Schedule

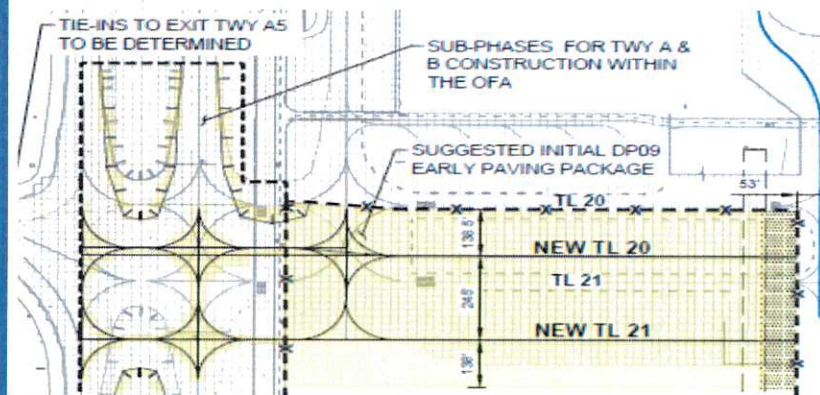
Activity	Target Date
Issue NTP	April 2017 A
Taxiway 'B' Reopens	Sep 2017 A
Taxilane 21 Reopens	Dec 2017 A
Taxiway 'A' Complete	Nov 2017 A
CGMP# 9 Bulletin# 1 Close-out	Mar 2019

## Recent Milestones Achieved

\* CGMP# 9 Final Close-out activities underway.

## Concerns/Issues/Risks

\* None at this time.





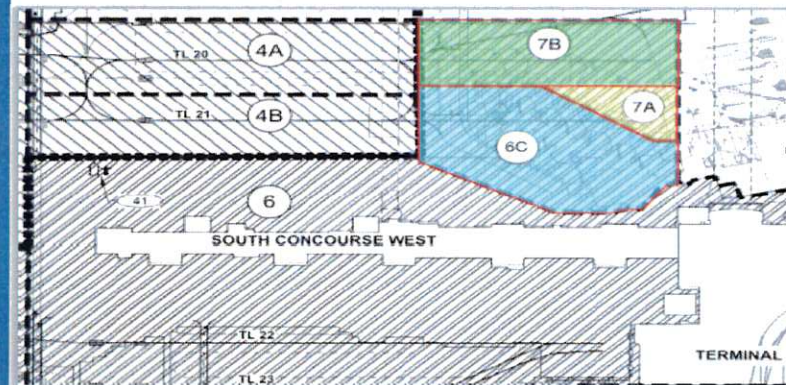
# CGMP# 9A – SCW Apron Paving and Hydrant Fueling

**Project: CGMP# 9A - SCW Apron Paving and Hydrant Fueling**

**CGMP 9A Original NTE: \$76.14M  
CGMP 9A EAC: \$76.14M**

**Apron Paving and Hydrant Fueling that will Support SCW Opening Day.**

Schedule		Recent Milestones Achieved
Activity	Target Date	
Issue NTP	Dec 2017 A	<ul style="list-style-type: none"> <li>* Fueling Trade Contractor welding and installing Fuel Pipe.</li> <li>* Site utilities progressing.</li> <li>* Completion Paving Plan due in January.</li> </ul>
Construction Start - Fueling	Jan 2018 A	
Construction Start - Paving	Apr 2018 A	
Taxiway 'B' Phase 6A Complete	Jul 2018 A	
Taxiway 'B' Phase 6B Complete	Oct 2018 A	
Taxiway 'B' Phase 6 Complete	Jul 2020	
<b>Concerns/Issues/Risks</b>		
* None at this time.		



# CGMP# 15 – NCP Enabling Phase 1

Project: CGMP# 15 - NCP Phase 1 Enabling

CGMP Original NTE: \$28.2M EAC: \$23.33M

North Concourse Phase 1 Enabling Construction including Ground Improvement and Driven Piles.

## Schedule

## Recent Milestones Achieved

Activity	Target Date
Start Enabling Construction	Jan 2018 A
Start Driven Piles	Jun 2018 A
Complete Stone Columns	Jul 2018 A
Complete Driven Piles	Aug 2018 A
Start Outer Ramp Sitework	Aug 2018 A
Substantial Completion	Mar 2019

- \* Mid-Concourse interior waterproofing activities underway.
- \* Trade Contractor Close-out underway.
- \* Final Close-out dependent on end of Dewatering activities.

## Concerns/Issues/Risks

\* None at this time.



# CGMP# 16 – NCP Phase 1

**Project: CGMP# 16 - NCP Phase 1**

**Budget: \$296.0M**  
**CGMP Initial NTE: \$166.70M**  
**CGMP Revision to Add Part 2: \$95.37M**  
**CGMP Part 3 Revision: \$29.88M**  
**CGMP Current NTE: \$291.98M**

**North Concourse Phase 1 including Building Structure, Enclosure and Interior Fit-out for 20 Gates.**

## Schedule

Activity	Target Date
CGMP Increment 1 Executed	Apr 2018 A
CGMP Comprehensive Executed	Aug 2018 A
Start Building Foundations	Jul 2018 A
Start Building Structure	Nov 2018 A
Start Building Enclosure	Feb 2019
Start Building Interior Construction	Mar 2019

## Recent Milestones Achieved

- \* **Structural Steel fabrication underway - Production is behind Schedule with target catch-up in January.**
- \* **Building Foundations and tie-beams complete.**
- \* **Building Slab-on-Grade Concrete underway.**
- \* **Steel Erection progressing.**
- \* **Elevated Slab Metal Decking started.**

## Concerns/Issues/Risks

- \* **Labor availability for upcoming trades.**
- \* **Steel Delivery delayed - no current impact to schedule.**



# CGMP# 17 – NCP Baggage Handling System Ph 1 / Ph 2


Project: CGMP# 17 - NCP Baggage Handling System

CGMP Original NTE: \$52.76M EAC: \$52.76M

North Concourse Phase 1 and Phase 2 Baggage Handling System.

## Schedule

## Recent Milestones Achieved

Activity	Target Date	
<p>Phase 1 installation supports construction of NCP Phase 1. Baggage Handling System is not Functional until completion of Central Tunnel and NCP Phase 2.</p>		<ul style="list-style-type: none"> <li>* BHS Engineering and BIM coordination underway.</li> <li>* Installation of Phase 1 Components next major Milestone.</li> </ul>
<p>Concerns/Issues/Risks</p>		

# CGMP# 18 – NCP Apron Paving / Hydrant Fueling

Project: CGMP# 18 - NCP Apron Paving/Fueling Phase 1

CGMP NTE: \$73.55M EAC: \$73.55M

North Concourse Phase 1 Apron Paving, Hydrant Fueling and Site Utilities.

## Schedule

## Recent Milestones Achieved

Activity	Target Date
Compl Sanitary Sewer Taxiway 'E'	Aug 2018 A
Compl Sanitary Sewer Taxiway 'F'	Oct 2018 A
Start Utility Installation	Oct 2018 A
Start Paving	Nov 2018
Substantial Completion	Jun 2021

- \* Utility Installation underway.
- \* Paving Plan due in January.

## Concerns/Issues/Risks

1. Civil Trade Contractor Resources.



# Job Progress Photos – Terminal Building



Terminal Restroom Level 2



Terminal Service Corridor Level 1



Terminal Basement Level 0 progress



Baggage Handling System in Terminal CBIS



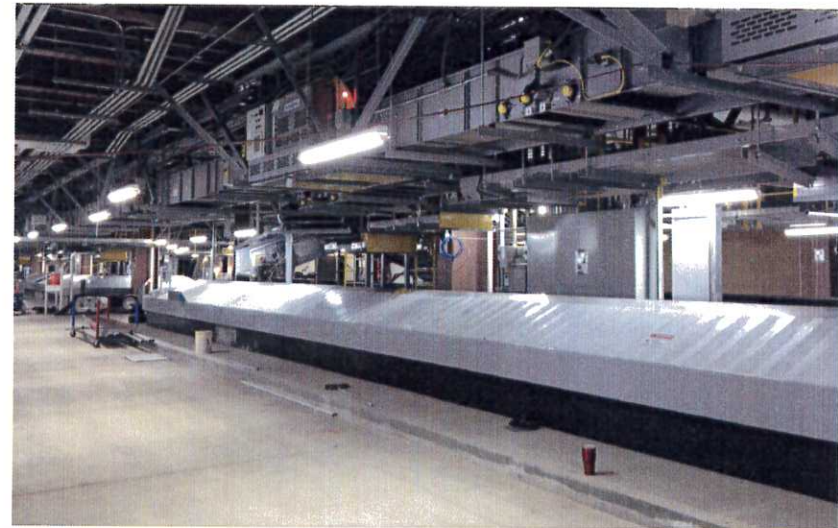
# Job Progress Photos – South Concourse West



SCW Building Exterior – Areas 'A' through 'H', looking north

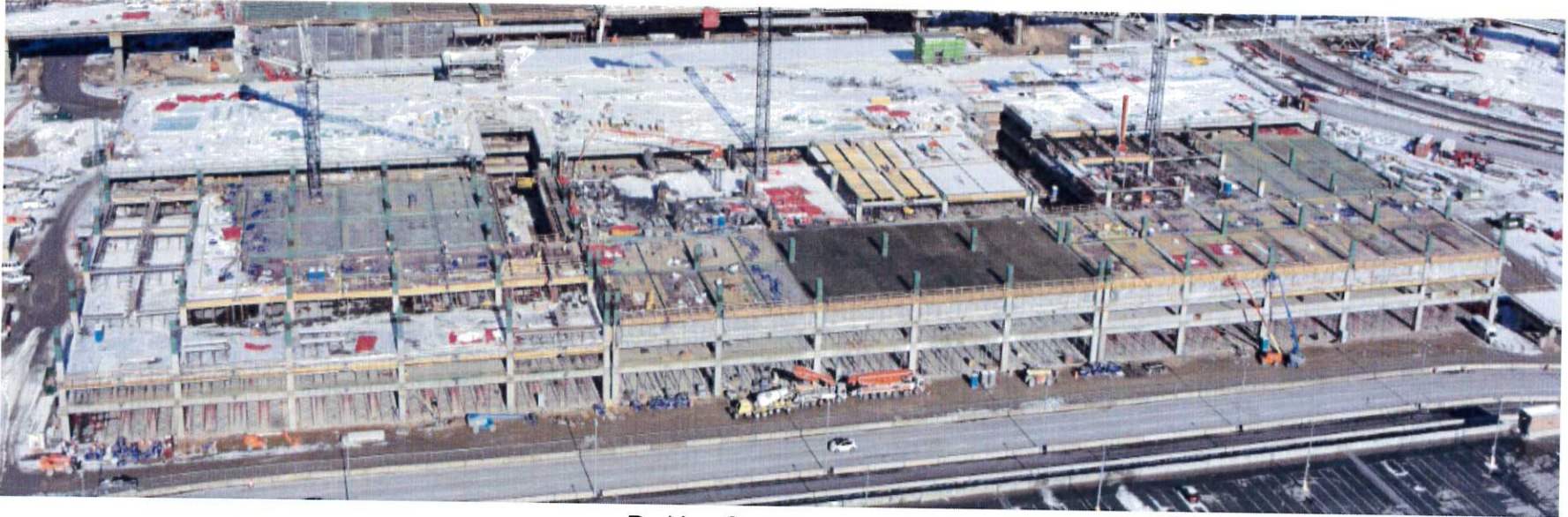


SCW Area 'E' Curtain Wall



Permanent Power for BHS SCW Area 'H'

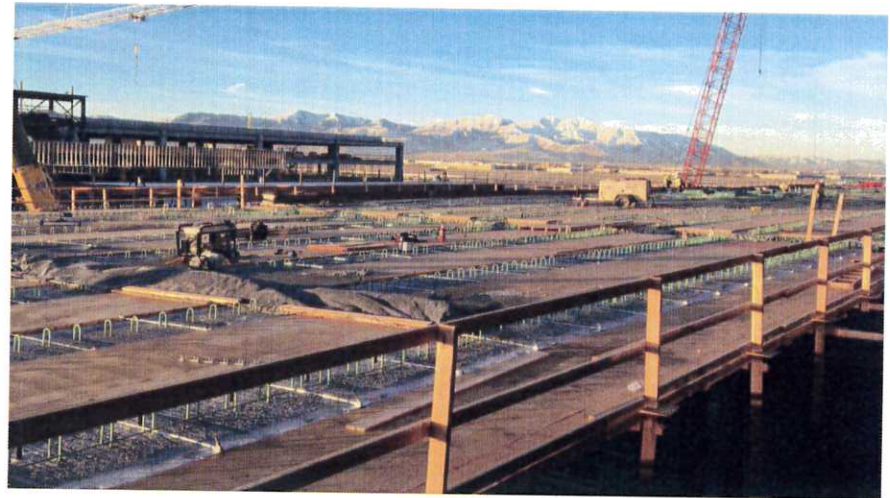
# Job Progress Photos – Parking Garage, Roadways, CUP



Parking Garage looking north



Parking Garage Electrical Rooms



Elevated Roadway Bridge 2 progress



# Job Progress Aerial Photo

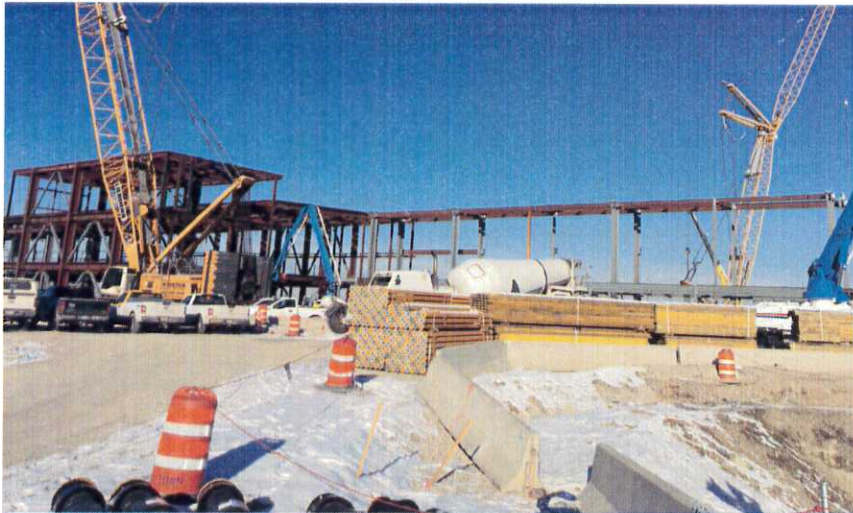


Terminal looking south

# Job Progress Photos – North Concourse



North Concourse Steel erection looking northeast, Sectors 'A' and 'BN'



North Concourse Steel erection Sector 'B'



North Tunnel Basement wall construction



# Job Progress Photos – North Concourse



Mid-Concourse Tunnel Construction Activity



North Concourse Basement End of Mid-Concourse Tunnel



Site Utilities



# Project Statistics

Safety Statistics Through 01/04/2019  
 35 Days without a Lost Time Injury  
 4,704,840 Hours Worked to Date

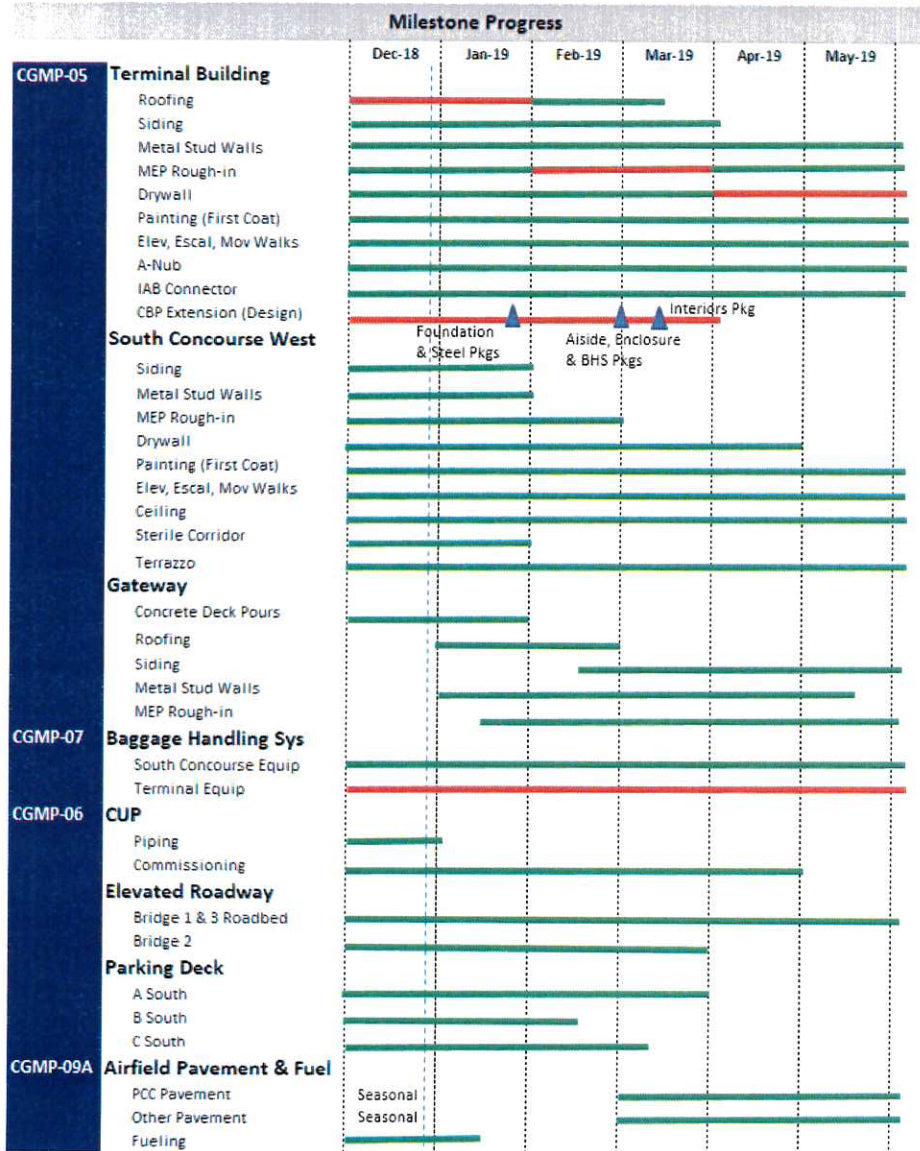
TRP/NCP Trade Staffing 01/04/2019  
 1,722 Trade Workers on Site

Contract Local/Non-Local Awarded Statistics			
Local Trades	Dollar Value	Trade Count	Percentage
Total Local (Wasatch Front) Contractors	\$1,008,482,697	98	68%
Total Out of State Contractors	\$467,663,226	20	32%
<b>Total Contract Awards</b>	<b>\$1,476,145,923</b>	<b>118</b>	<b>100%</b>

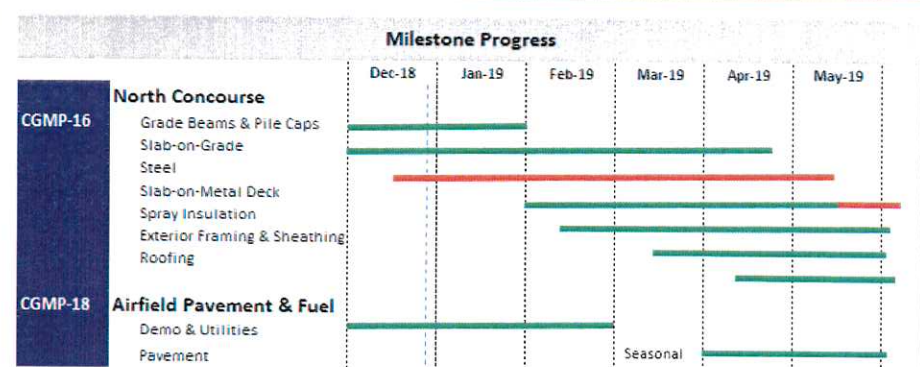
Contract Union/Merit Shop Awarded Statistics			
Union Trades	Dollar Value	Trade Count	Percentage
Total Union Contractors	\$550,272,533	28	37%
Total Merit Shop Contractors	\$925,873,390	90	63%
<b>Total Contract Awards</b>	<b>\$1,476,145,923</b>	<b>118</b>	<b>100%</b>

# Near Term ARP Schedule

## Schedule Overview



## Schedule Overview



## Schedule Milestones

- January 7, 2019 – CGMP-05 Start pouring A-Nub Decks
- January 7, 2019 – CGMP-05 Terrazzo to SCW Area 'B'
- January 10, 2019 – CGMP-06 First of three Concrete pours for Elevated Roadway
- January 8, 2019 – CGMP-05 Mobilize for Piles for CPB
- January 12, 2019 – CGMP-06 Lift Parking Garage Moving Walkways
- January 14, 2019 – CGMP-05 First Install: Sterile Corridor Glass Curtain Wall
- January 15, 2019 – CGMP-06 Second Concrete pour Elevated Roadway
- January 15, 2019 – CGMP-05 First Install: Engine Generators
- January 15, 2019 – CGMP-05 Erect North End of Pedestrian Bridge
- January 21, 2019 – CGMP-05 Pour Concrete at IAB Connector
- January 31, 2019 – CGMP-05 SCW Card Access System Mock-up
- January 31, 2019 – CGMP-06 Final Concrete pour Elevated Roadway
- February 1, 2019 – CGMP-06 Fifth Floor Steel for Parking Garage

This month's schedule is based on December 2018 construction update that indicates that the Overall Program is tracking on schedule.



# Overall ARP Tracking Budget

December 2018	Original Budget	Revisions	Revised Budget	Invoiced to Date	EAC
CGMP 01 - HDJV Preconstruction Services	\$ 11,375,794	\$ (1,800,387)	\$ 9,575,407	\$ 9,575,407	\$ 9,575,407
CGMP 02 - HDJV General Conditions Services	\$ 105,983,964		\$ 105,983,964	\$ 51,821,153	\$ 105,983,964
CGMP 03 - QTA/RSS Site Work, Utilities, Civil Enabling Ph 1	\$ 90,510,278	\$ (1,788,952)	\$ 88,721,326	\$ 88,721,327	\$ 88,721,326
CGMP 04 - Landside/Airside Enabling	\$ 81,096,442	\$ (1,581,372)	\$ 79,515,070	\$ 76,255,929	\$ 79,515,070
CGMP 05 - Terminal/SCW/Gateway	\$ 788,346,442	\$ 70,019,855	\$ 858,366,297	\$ 542,715,239	\$ 858,366,297
CGMP 06 - Parking Garage, Roadways, CUP	\$ 363,855,782	\$ 5,883,353	\$ 369,739,135	\$ 181,314,330	\$ 369,739,135
CGMP 07 - TRP Baggage Handling System	\$ 86,085,766	\$ 13,472,499	\$ 99,558,265	\$ 48,138,638	\$ 99,558,265
CGMP 09 - Taxilanes 20&21/Taxiways A&B	\$ 26,761,608	\$ (1,100,754)	\$ 25,660,854	\$ 22,432,812	\$ 25,660,854
CGMP 09A - Apron Paving & Fueling/SCW	\$ 76,135,399		\$ 76,135,399	\$ 23,978,834	\$ 76,135,399
CGMP 10 - South Concourse East (SCE)	\$ 395,174,615	\$ (12,218,411)	\$ 382,956,204		\$ 382,956,204
CGMP 11 - Apron Paving & Fueling SCE	\$ 201,388,788		\$ 201,388,788		\$ 201,388,788
CGMP 12 - Existing Structure Demolition	\$ 20,788,411		\$ 20,788,411		\$ 20,788,411
CGMP 13 - AOJV Preconstruction Services	\$ 15,483,607		\$ 15,483,607	\$ 10,461,342	\$ 15,483,607
CGMP 14 - AOJV General Conditions Ph 1	\$ 87,131,130		\$ 87,131,130	\$ 9,473,099	\$ 87,131,130
CGMP 15 - NCP Enabling Ph 1	\$ 28,222,187		\$ 28,222,187	\$ 19,422,261	\$ 28,222,187
CGMP 16 - North Concourse Ph 1 & Mid-Concourse Tunnel	\$ 297,192,031	\$ (5,208,469)	\$ 291,983,562	\$ 54,817,482	\$ 291,983,562
CGMP 17 - NCP Baggage Handling System	\$ 56,071,065	\$ (3,314,239)	\$ 52,756,826	\$ 2,363,540	\$ 52,756,826
CGMP 18 - NCP Apron Paving & Fueling Ph 1	\$ 83,323,433	\$ (9,770,630)	\$ 73,552,803	\$ 9,647,786	\$ 73,552,803
CGMP 19 - North Concourse Ph 2 & Central Tunnel	\$ 212,535,351		\$ 212,535,351		\$ 212,535,351
CGMP 20 - NCP Apron Paving & Fueling Ph 2	\$ 42,110,130		\$ 42,110,130		\$ 42,110,130
CGMP 21 - NCP FF&E/Furniture	\$ 4,121,026		\$ 4,121,026		\$ 4,121,026
<b>Total Program Construction</b>	<b>\$ 3,073,693,249</b>	<b>\$ 52,592,493</b>	<b>\$ 3,126,285,742</b>	<b>\$ 1,151,139,179</b>	<b>\$ 3,126,285,742</b>
TRP Soft Cost	\$ 251,316,222	\$ 8,000,000	\$ 259,316,222	\$ 190,396,388	\$ 259,316,222
NCP Soft Cost	\$ 173,950,554	\$ 2,069,655	\$ 176,020,209	\$ 41,273,477	\$ 176,020,209
<b>Total Program Soft Cost</b>	<b>\$ 425,266,776</b>	<b>\$ 10,069,655</b>	<b>\$ 435,336,431</b>	<b>\$ 231,669,865</b>	<b>\$ 435,336,431</b>
Terminal Redevelopment Program (TRP) Owner Reserve	\$ 30,000,000	\$ (22,981,500)	\$ 7,018,500		\$ 7,018,500
North Concourse Program (NCP) Owner Reserve	\$ 47,010,975	\$ (39,680,648)	\$ 7,330,327		\$ 7,330,327
<b>Total Program Owner Reserve</b>	<b>\$ 77,010,975</b>	<b>\$ (62,662,148)</b>	<b>\$ 14,348,827</b>	<b>\$ -</b>	<b>\$ 14,348,827</b>
<b>Total Airport Redevelopment Program</b>	<b>\$ 3,575,971,000</b>	<b>\$ -</b>	<b>\$ 3,575,971,000</b>	<b>\$ 1,382,809,044</b>	<b>\$ 3,575,971,000</b>



## SALT LAKE CITY AIRPORT BOARD

**AGENDA:** DISCUSSION ITEM (D)  
**DATE:** 16 January 2019  
**TO:** Airport Board  
**FROM:** Bill Wyatt, Executive Director  
**SUBJECT:** **Public Meetings Training**

---

Marco Kunz will present the "Open and Public Meetings Training" which is required by State law to the Board.

SALT LAKE CITY DEPARTMENT OF  
AIRPORTS

# Airport Advisory Board Training

2019





# UTAH OPEN AND PUBLIC MEETINGS ACT



Utah Code  
§§52-4-101 through 305

# WHAT DOES THE OPEN MEETINGS ACT DO?



Requires **MEETINGS** of a **PUBLIC BODY** to be open to the public, unless an **EXCEPTION** is available under the Act that allows the meeting to be **CLOSED**.

# PUBLIC BODY

The **AIRPORT BOARD** is a public body for purposes of the Act

## MEETING

- **CONVENING**
- At least a **QUORUM**
- To **DISCUSS, RECEIVE COMMENTS,**  
or **ACT**

# Which gatherings of the Airport Advisory Board are subject to the Act?

## Yes:

- Electronic Meetings
- Retreats, Workshops

## No:

- Chance meetings, group photos, ceremonial events
- No Quorum (Simple majority of all Board members specified by Ordinance)

# WHAT DOES THE ACT REQUIRE?

**Minimal compliance in 3 Basic Areas:**



**NOTICE**



# WHAT **PUBLIC NOTICE** IS REQUIRED?

## Annual Meeting Schedule:

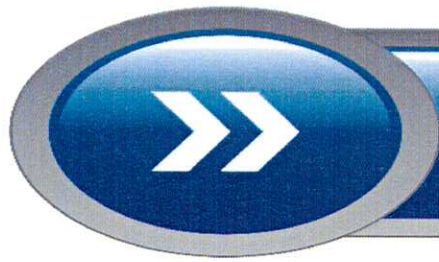
- Scheduled meetings: **date, time, and place**

## Each meeting:

- **TIME:** Not less than 24 hours
- **CONTENT:** **Agenda, Date, Time, Place**
- **POSTED|PUBLISHED**

## Emergency Meetings:

- Best notice practicable
- Attempt to notify all Board members
- **MAJORITY** of Board members must approve holding the meeting.



# Agenda

1. Reasonable Specificity – Each topic

2. Matters Not on the Agenda

Public Comments – No final action

# Does the Act apply to **CLOSED MEETINGS?**

No, **IF**

- The meeting is closed to discuss **certain topics**; and
- It is closed using **Specified Procedures**.



# CLOSED MEETINGS

A meeting may be closed **ONLY** to discuss  
**SPECIFIED TOPICS**

- ◇ An INDIVIDUAL: character, professional competence, physical or mental health
  - ◇ COLLECTIVE BARGAINING strategy;
  - ◇ Pending or reasonably imminent LITIGATION;
  - ◇ REAL PROPERTY purchase, exchange, lease (when it would disclose appraisal or value and prevent transaction) or sale;
  - ◇ Deployment of SECURITY DEVICES
  - ◇ CRIMINAL CONDUCT investigations
- A meeting also may be closed for the Board to receive the ADVICE of its LEGAL COUNSEL.




# CLOSED MEETINGS

## Procedure

1. Quorum present
2. Two-thirds of Board members present approve the closing.
3. Publicly announce and enter in the minutes:
  - (a) General reason for closing meeting
  - (b) Location of meeting
  - (c) Vote by name





What  
**Records**  
are required?

# OPEN MEETING RECORDS

- **WRITTEN** minutes & **RECORDING**  
(SITE VISIT : EITHER, IF NO VOTE TAKEN)
- Minutes must include:
  - Date, Time, Place
  - Names of Board members present and absent
  - Substance of all matters proposed, discussed, or decided;
  - Record of each vote
  - Name of anyone who provided testimony/comments and summary of comments
  - Other information a Board member requests
- **OFFICIAL RECORD = WRITTEN MINUTES**



# CLOSED MEETINGS RECORDS

- **RECORDING** required - Written minutes optional
- **MUST INCLUDE**
  - Date, time, and place of the meeting
  - Names of all present and absent  
(unless disclosure would impair confidentiality necessary for original purpose of closing the meeting)
- **NO RECORD REQUIRED** if discussing
  - Character, professional competence, or physical or mental health of an individual
  - Deployment of security personnel, devices, or systems.  
*NOTE: Person presiding must sign sworn statement affirming sole purpose for closing meeting was to discuss protected matters.*
- **PROTECTED RECORDS** under GRAMA

**CONFIDENTIAL**

# ELECTRONIC MEETINGS RECORDS

Resolution Adopted ✓

## Notice

- Public notice of the meeting in usual way; and
- Post written notice at the anchor location;
- Provide Board members:
  - At least 24 hours notice
  - Description how to connect

## Anchor Locations

- One or more anchor locations for meeting, including Airport Board Room.
- Space for public






Is  
**Public Comment**  
allowed?

# PUBLIC COMMENT/PARTICIPATION



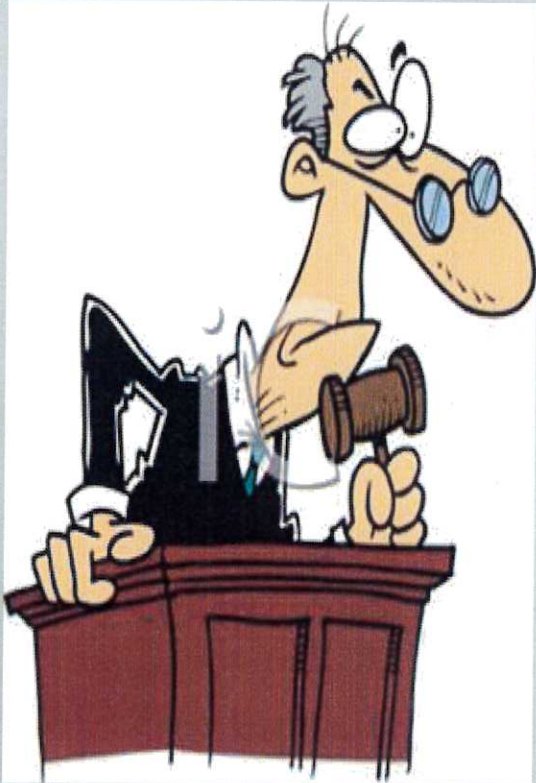
- At **DISCRETION** of Board Chair
- **TIME LIMITS** for each comment
- May limit to **AGENDA**
- No **FINAL ACTION** if not on agenda
- **WILLFULLY DISRUPTS AND**  
orderly conduct of meeting **SERIOUSLY COMPROMISED**  
--May REMOVE from meeting





What are the  
**Penalties**  
for violations of the  
Act?

# VIOLATIONS



## CRIMINAL OFFENSE

to **knowingly violate** the Open and Public Meetings Act

- Enforced by Attorney General and County Attorneys
- Private individuals can bring lawsuit
- Action can be voided, enjoined



# SALT LAKE CITY DEPARTMENT OF AIRPORTS



Salt Lake City  
International Airport

## SALT LAKE CITY AIRPORT BOARD

**AGENDA:** DISCUSSION ITEM (E)  
**DATE:** 16 January 2019  
**TO:** Airport Board  
**FROM:** Bill Wyatt, Executive Director  
**SUBJECT:** **Ambassador Program**

---

Nancy Anthon, Operations Manager Customer Service, will present an overview of the Ambassador Program to the Board (presentation on file).



**AMBASSADOR**

# Volunteer Program



## SLC VOLUNTEER AMBASSADOR PROGRAM

SLC has launched a Volunteer Ambassador Program to assist passengers traveling through the airport. The airport is looking for people who are customer-service oriented to help passengers by answering questions, providing directions and ensuring passengers have an enjoyable experience. Volunteers must commit to at least one shift a week for a four-hour period.



Stacie Whitford and Russ Pack



## STATISTICS:

- ▶ 8 Volunteers
- ▶ 3 In process
- ▶ Of the 8 Volunteers:
  - ▶ 4 are retired Department of Airports employees
  - ▶ 2 are retired Delta Airlines employees
  - ▶ 1 is a Westminster Aviation student
  - ▶ 1 is a Westminster Aviation program employee
- ▶ Logged 162 Volunteer hours as of January 10, 2019





# AMBASSADOR

## RECRUITMENT EFFORTS:

- ▶ Contacted a retired Delta Airlines employee group.
- ▶ Mailing letters to Department of Airports retired employees who retired in the past 5 years.
- ▶ Reached out to Aviation students
- ▶ Word of mouth



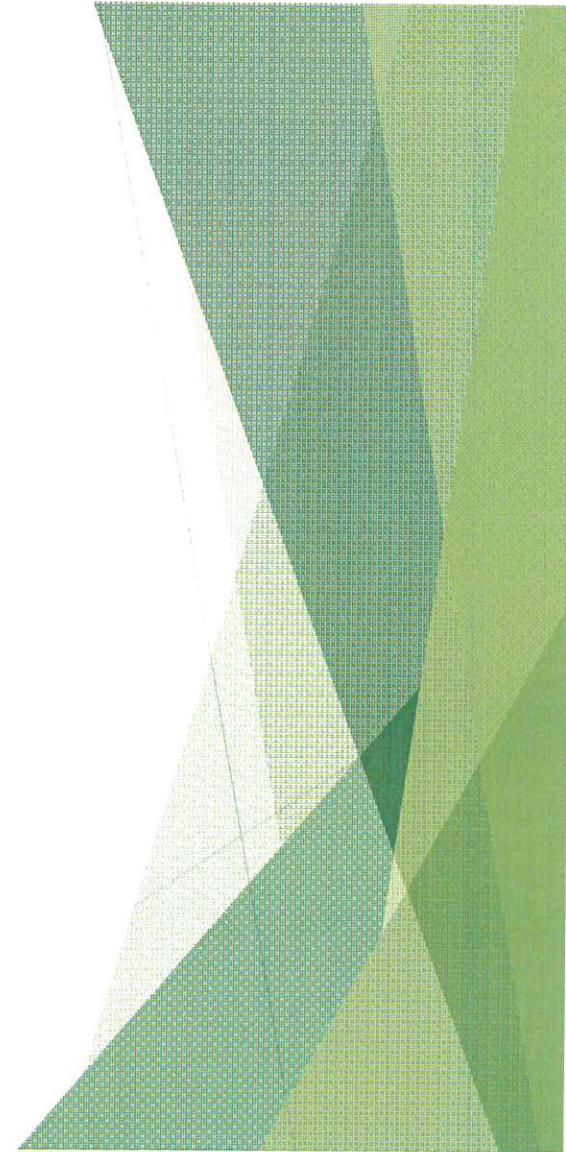
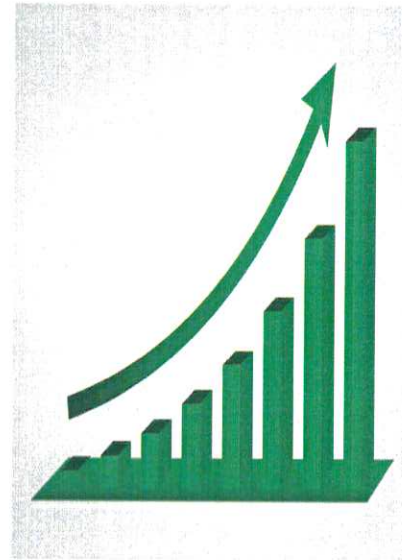




# AMBASSADOR

## GROWTH OF PROGRAM:

- ▶ Goal to have Volunteers scheduled from 7:00 AM - 9:00 PM, 7 days per week.
  - ▶ 75 volunteers by end of 2019 - 10 Volunteers per day, coverage from 7:00 AM until 9:00 PM, 7 days per week.
  - ▶ 115 volunteers by fall 2020 - 14 volunteers per day, coverage from 7:00 AM until 9:00 PM, 7 days per week.





# SLC AMBASSADOR

## TRAINING:

Ambassadors receive 4 hours of classroom training, plus 3 to 6 weeks of on-the-job training with a mentor. Training consists of airport badge training, rules and regulations, customer service training, and an airport tour. Periodic training for updates or changes will be required as necessary.





## AMBASSADOR

### LOCATION OF AMBASSADORS:

Right now, the biggest need for Ambassadors is at the top of Concourses C, D, and F. As the program grows, we will add more locations.

We are building the program in preparation for the opening of the new airport in 2020. We anticipate “way finding” will be the most important function of the Ambassadors.



## AMBASSADOR

### UNIFORMS/APPEARANCE:

It is important that all Volunteers maintain a neat appearance. Volunteers are issued a uniform shirt and jacket with the “Ambassador” logo, which must be worn when on duty. Volunteers should wear black or khaki pants or skirt and comfortable shoes.

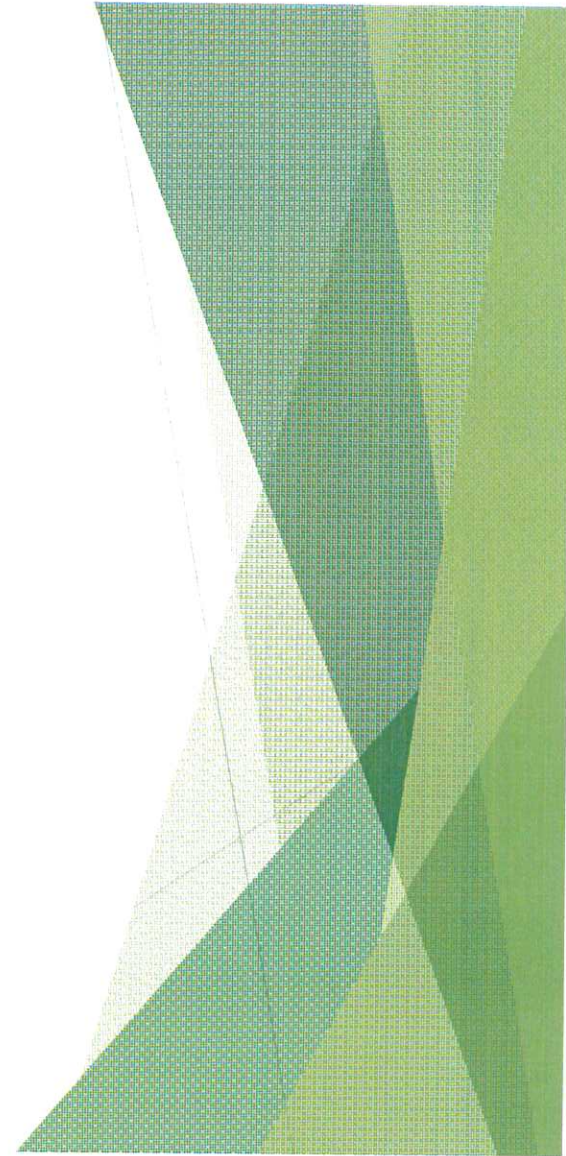




## AMBASSADOR

### REQUIREMENTS:

- ▶ 18 years of age or older.
- ▶ Available to serve at least 16 hours per month.
- ▶ Physically able to stand or use a mobility device throughout a four-hour shift.
- ▶ Able to pass FBI screening and qualify for an Airport security badge.





## AMBASSADOR

### REQUIREMENTS:

- ▶ Able to communicate effectively.
- ▶ Comply with all Airport regulations, assigned Volunteer duties, and requests and directions from staff.
- ▶ Friendly, outgoing, and able to approach customers and initiate conversations to offer assistance.

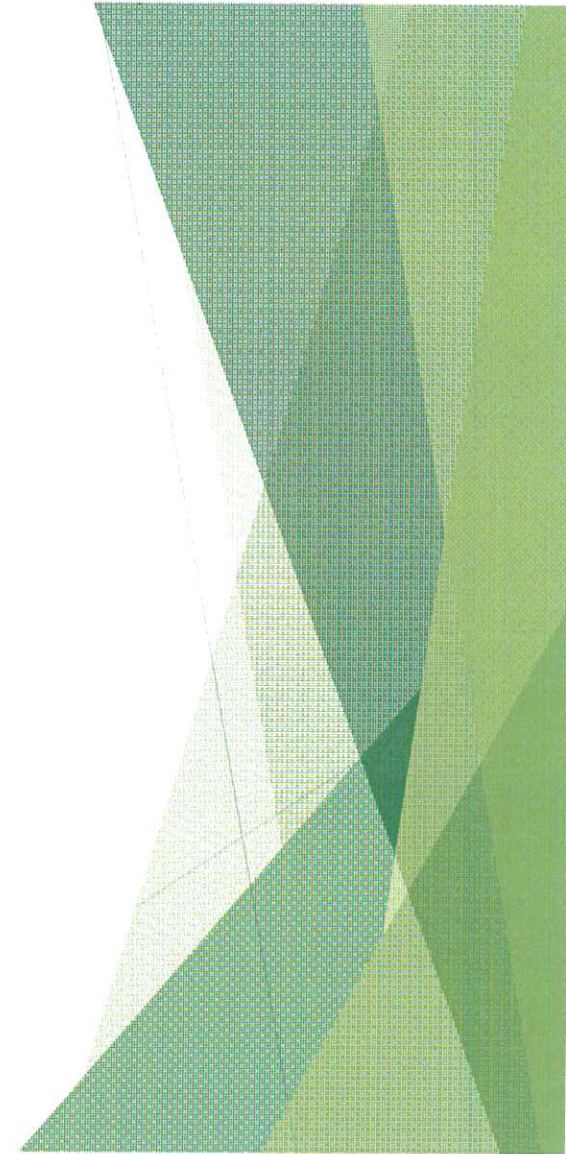


The logo for Salt Lake City International Airport (SLC) features a stylized mountain range and a bird in flight above the letters 'SLC' in a white font on a dark blue background.

# SLC AMBASSADOR

## DUTIES:

- ▶ Answer general questions regarding transportation options; direct customers to ground transportation, car rentals, public transportation.
- ▶ Direct customers to correct boarding gate according to the customer's boarding pass, or to proper baggage claim.





# SLC AMBASSADOR

## DUTIES:

- ▶ Answer questions about where food and beverage, retail establishments, and restrooms are located.
- ▶ Offer great, friendly customer service.
- ▶ Smile.
- ▶ HAVE FUN!





## SALT LAKE CITY AIRPORT BOARD

**AGENDA:** DISCUSSION ITEM (F)  
**DATE:** 16 January 2019  
**TO:** Airport Board  
**FROM:** Bill Wyatt, Executive Director  
**SUBJECT:** **Election of Board Chair and Vice-Chair**

---

The Board will be asked to elect the Chair and Vice-Chair for 2019. At the last meeting, the Board nominated Cynthia Miller as Chair and Steven Price as Vice-Chair.

DEPARTMENT OF AIRPORTS  
BOARD MEETING

16 January 2019

INFORMATIONAL ITEMS

**SALT LAKE CITY DEPARTMENT OF AIRPORTS**  
**(An Enterprise Fund of Salt Lake City Corporation)**  
**Statements of Net Position**  
**(Amounts in Thousands)**

<i>As of November 30,</i>	<b>2018</b>	<b>2017</b>
<b>ASSETS</b>		
<b>Current Assets</b>		
Cash and cash equivalents	\$ 316,896	\$ 262,162
Restricted cash and cash equivalents	96,439	51,841
Restricted investments	379,816	-
Investments	15,888	11,899
Airline and rental fees receivable	17,117	19,523
Other assets	3,934	4,463
<b>Total current assets</b>	<b>830,090</b>	<b>349,888</b>
<b>Noncurrent Assets</b>		
Restricted cash and cash equivalents	795,722	848,572
Restricted investments	48,914	39,465
Investments	29,180	32,765
Other assets	1,901	2,000
<b>Total noncurrent assets and investments</b>	<b>875,717</b>	<b>922,802</b>
<b>Capital assets</b>		
Land	105,129	104,590
Building and improvements	1,419,580	1,369,273
Equipment	148,699	141,313
Construction in progress	1,182,483	579,418
<b>Total capital assets - at cost</b>	<b>2,855,891</b>	<b>2,194,594</b>
Less accumulated depreciation	1,012,399	950,227
<b>Net capital assets</b>	<b>1,843,492</b>	<b>1,244,367</b>
<b>Total noncurrent assets</b>	<b>2,719,209</b>	<b>2,167,169</b>
<b>Total Assets</b>	<b>3,549,299</b>	<b>2,517,057</b>
<b>Deferred Outflows of Resources</b>	<b>6,741</b>	<b>11,948</b>
<b>Total Assets and Deferred Outflows of Resources</b>	<b>\$ 3,556,040</b>	<b>\$ 2,529,005</b>

**SALT LAKE CITY DEPARTMENT OF AIRPORTS**  
**(An Enterprise Fund of Salt Lake City Corporation)**  
**Statements of Net Position**  
**(Amounts in Thousands)**

<i>As of November 30,</i>	<b>2018</b>	<b>2017</b>
<b>LIABILITIES</b>		
<b>Current Liabilities</b>		
Accounts payable	\$ 29,193	\$ 14,566
Accrued compensation	2,802	2,565
Interest payable	24,413	20,833
Other accrued liabilities	4,550	4,363
<b>Total current liabilities</b>	<b>60,958</b>	<b>42,327</b>
<b>Noncurrent Liabilities</b>		
Revenue bonds payable	2,051,863	1,123,247
Noncurrent compensation liability	3,936	3,790
Net pension liability	20,449	27,424
Other accrued liabilities	33,807	14,116
<b>Total noncurrent liabilities</b>	<b>2,110,055</b>	<b>1,168,577</b>
<b>Total Liabilities</b>	<b>2,171,013</b>	<b>1,210,904</b>
<b>Deferred Inflows of Resources</b>	<b>10,747</b>	<b>6,781</b>
<b>NET POSITION</b>		
Net investment in capital assets	554,507	801,594
Restricted for		
Capital projects	35,001	69,901
Debt service	334,147	189,503
Unrestricted	450,625	250,322
<b>Net Position</b>	<b>1,374,280</b>	<b>1,311,320</b>
<b>Total Liabilities, Deferred Inflows of Resources, and Net Position</b>	<b>\$ 3,556,040</b>	<b>\$ 2,529,005</b>

**SALT LAKE CITY DEPARTMENT OF AIRPORTS**  
 (An Enterprise fund of Salt Lake City Corporation)  
**Statements of Revenues, Expenses, and Changes in Fund Net Position**  
 (Amounts in Thousands)

<i>for the five month period ended November.</i>	<b>2018</b>	<b>2017</b>
<b>Operating Revenues</b>		
Airline revenue	\$ 31,848	\$ 30,789
Terminal concessions	8,437	7,754
Landside concessions	30,425	28,566
Lease revenue	2,779	2,505
General aviation	1,300	1,144
State aviation tax	1,249	1,313
Other revenue	2,787	3,096
Operating revenues	78,825	75,167
Less airline revenue sharing	(5,522)	(5,381)
Total operating revenues	73,303	69,786
<b>Operating Expenses</b>		
Salaries and benefits	22,060	21,181
Materials and supplies	3,872	3,688
Maintenance contracts	4,456	3,759
Charges and services	4,054	3,694
Utilities	2,733	2,737
Inter-governmental	1,433	2,601
Other expenses	1,832	1,851
Total operating expenses before depreciation	40,440	39,511
<b>Operating Income Before Depreciation</b>	<b>32,863</b>	<b>30,275</b>
<b>Depreciation Expense</b>	<b>26,657</b>	<b>26,944</b>
<b>Operating Income</b>	<b>6,206</b>	<b>3,331</b>
<b>Non-Operating Revenues (Expenses)</b>		
Passenger facility charges	20,410	20,275
Customer facility charges	6,483	6,353
Interest income	10,444	7,090
Interest expense	(22,518)	(19,268)
Bond issuance costs	(3,127)	-
Gain on disposition of property and equipment	20	37
Net non-operating income	11,712	14,487
<b>Capital Contributions</b>		
Contributions and grants	1,718	5,694
Total capital contributions	1,718	5,694
<b>Net Position</b>		
Increase in net position	19,636	23,512
Net Position, beginning of period	1,354,644	1,287,808
Net Position, end of period	\$ 1,374,280	\$ 1,311,320

**SALT LAKE CITY DEPARTMENT OF AIRPORTS**

(An Enterprise fund of Salt Lake City Corporation)

**OPERATING REVENUES AND EXPENDITURES TO BUDGET (Unaudited)**

(Amounts in Thousands)

	Jul 2018 - Nov 2018 ACTUALS	Jul 2018 - Nov 2018 BUDGET	SURPLUS/ DEFICIT	PERCENT CHANGE
<b>Revenues</b>				
Landing Fees	\$ 14,623	\$ 13,804	\$ 819	5.9%
Fuel Farm	225	225	-	0.0%
Aircraft Remain Overnight Fees	108	134	(26)	-19.8%
Cargo Bldg. & Ramp Use Fee	648	659	(11)	-1.6%
Security Charges to TSA	331	315	16	5.2%
Extraordinary Service Charges	15	28	(13)	-45.0%
Passenger Boarding Bridges	662	696	(34)	-4.9%
Tenant Telephone Fees	131	134	(3)	-2.6%
Terminal Rents	14,774	14,573	201	1.4%
General Aviation Hangars	521	529	(8)	-1.4%
FBO Hangars/Fuel Oil Royalty	163	161	2	1.3%
Flight Kitchens	879	473	406	85.8%
Other Buildings & Office Space	2,200	2,148	52	2.4%
Food Service & Vending	5,113	4,763	350	7.4%
News/Gift Shop	2,886	2,603	283	10.9%
Car Rental	12,465	11,640	825	7.1%
Leased Site Areas	1,118	1,007	111	11.1%
Auto Parking/Ground Transportation	17,944	16,056	1,888	11.8%
Advertising	437	409	28	6.7%
State Aviation Fuel Tax	1,249	1,208	41	3.4%
Military	77	64	13	20.1%
Glycol Recycling Sales	93	175	(82)	-46.7%
Auxiliary Airport Fuel Sales	616	465	151	32.5%
Other	1,547	640	907	141.6%
Less: Airline Revenue Sharing	(5,522)	(5,209)	(313)	6.02%
<b>Total Operating Revenues</b>	<b>73,303</b>	<b>67,700</b>	<b>5,603</b>	<b>8.3%</b>
<b>Expenses</b>				
Salary & Wages	15,268	15,072	(196)	-1.3%
Employee Benefits	7,323	7,490	167	2.2%
Maintenance Supplies	1,856	4,060	2,204	54.3%
Automotive Supplies	1,113	1,042	(71)	-6.8%
Other Supplies	904	837	(67)	-8.0%
Insurance Premiums	1,277	742	(535)	-72.2%
Janitorial Service	3,596	3,675	79	2.1%
Maintenance Contracts	860	978	118	12.1%
Other Contractual Services	2,978	3,084	106	3.4%
Professional & Tech Services	1,076	1,986	910	45.8%
Utilities	2,733	2,953	220	7.4%
Administrative Service Fee	289	673	384	57.0%
Aircraft Rescue Fire Fighting	1,144	1,944	800	41.1%
Other Expenses	555	1,218	663	54.5%
Contingency Reserve	-	400	400	100.0%
Operating Expenses Before Capitalized Salaries	40,972	46,154	5,182	11.2%
Capitalized Salaries	532	532	-	0.0%
<b>Total Operating Expenses</b>	<b>40,440</b>	<b>45,622</b>	<b>5,182</b>	<b>11.4%</b>
<b>Operating Income</b>	<b>\$ 32,863</b>	<b>\$ 22,078</b>	<b>\$ 10,785</b>	<b>48.8%</b>

**SALT LAKE CITY DEPARTMENT OF AIRPORTS**

(An Enterprise fund of Salt Lake City Corporation)

**OPERATING REVENUES AND EXPENDITURES TO PRIOR YEAR (Unaudited)**

(Amounts in Thousands)

	Jul 2018 - Nov 2018	Jul 2017 - Nov 2017	SURPLUS/ (DEFICIT)	PERCENT CHANGE
<b>Revenues</b>				
Landing Fees	\$ 14,623	\$ 13,524	\$ 1,099	8.1%
Fuel Farm	225	223	2	0.8%
Aircraft Remain Overnight Fees	108	134	(26)	-19.7%
Cargo Bldg. & Ramp Use Fee	648	656	(8)	-1.2%
Security Charges to TSA	331	469	(138)	-29.4%
Extraordinary Service Charges	15	24	(9)	-35.9%
Passenger Boarding Bridges	662	690	(28)	-4.0%
Tenant Telephone Fees	131	129	2	1.3%
Terminal Rents	14,774	14,524	250	1.7%
General Aviation Hangars	521	517	4	0.9%
FBO Hangars/Fuel Oil Royalty	163	163	(0)	0.0%
Flight Kitchens	879	789	90	11.4%
Other Buildings & Office Space	2,200	2,257	(57)	-2.5%
Food Service & Vending	5,113	4,673	440	9.4%
News/Gift Shops	2,886	2,692	194	7.2%
Car Rental	12,465	12,609	(144)	-1.1%
Leased Site Areas	1,118	1,018	100	9.8%
Auto Parking/Ground Transportation	17,944	15,940	2,004	12.6%
Advertising	437	388	49	12.6%
State Aviation Fuel Tax	1,249	1,313	(64)	-4.8%
Military	77	77	(0)	0.0%
Glycol Recycling Sales	93	173	(80)	-46.1%
ARFF Training	-	373	(373)	-100.0%
Auxiliary Airport Fuel Sales	616	465	151	32.5%
Other	1,547	1,347	200	14.9%
Less: Airline Revenue Sharing	(5,522)	(5,381)	(141)	2.6%
<b>Operating Revenues</b>	<b>73,303</b>	<b>69,786</b>	<b>3,517</b>	<b>5.0%</b>
<b>Expenses</b>				
Salary & Wages	\$ 15,268	\$ 14,698	\$ 570	3.9%
Employee Benefits	7,323	6,976	347	5.0%
Maintenance Supplies	1,856	1,990	(134)	-6.8%
Automotive Supplies	1,113	1,070	43	4.1%
Other Supplies	904	627	277	44.1%
Insurance Premiums	1,277	1,338	(61)	-4.6%
Janitorial Service	3,596	2,998	598	19.9%
Maintenance Contracts	860	761	99	13.0%
Other Contractual Services	2,978	2,752	226	8.2%
Professional & Tech Service	1,076	942	134	14.3%
Utilities	2,733	2,737	(4)	-0.1%
Administrative Service Fee	289	547	(258)	-47.2%
Aircraft Rescue Fire Fighting	1,144	2,054	(910)	-44.3%
Other Expenses	555	513	42	8.1%
<b>Operating Expenses Before Capitalized Salaries</b>	<b>40,972</b>	<b>40,003</b>	<b>969</b>	<b>2.4%</b>
Capitalized Salaries	532	492	40	8.1%
<b>Total Operating Expenses</b>	<b>40,440</b>	<b>39,511</b>	<b>929</b>	<b>2.4%</b>
<b>Operating Income</b>	<b>\$ 32,863</b>	<b>\$ 30,275</b>	<b>\$ 2,588</b>	<b>8.5%</b>



**SALT LAKE CITY INTERNATIONAL AIRPORT  
AIR TRAFFIC STATISTICS AND ACTIVITY REPORT  
ELEVEN MONTHS ENDED NOVEMBER 2018**

	November 2018	CHANGE	YTD 2018	CHANGE	12 MO ROLLING Ending 11/2018	CHANGE
<b>PASSENGERS</b>						
<i>DOMESTIC</i>						
Enplaned	969,345	6.02%	11,286,095	5.13%	12,203,249	4.89%
Deplaned	960,866	6.01%	11,223,858	5.12%	12,179,831	4.95%
<b>TOTAL DOMESTIC</b>	<b>1,930,211</b>	<b>6.02%</b>	<b>22,509,953</b>	<b>5.13%</b>	<b>24,383,080</b>	<b>4.92%</b>
<i>INTERNATIONAL</i>						
Enplaned	30,975	20.53%	490,213	17.69%	520,395	16.35%
Deplaned	29,842	20.20%	511,513	16.76%	540,881	15.57%
<b>TOTAL INTERNATIONAL</b>	<b>60,817</b>	<b>20.37%</b>	<b>1,001,726</b>	<b>17.21%</b>	<b>1,061,276</b>	<b>15.95%</b>
<b>TOTAL PASSENGERS</b>	<b>1,991,028</b>	<b>6.40%</b>	<b>23,511,679</b>	<b>5.59%</b>	<b>25,444,356</b>	<b>5.34%</b>
<b>LANDED WEIGHT</b>						
Air Carriers	1,105,424,859	5.52%	12,924,576,346	4.29%	14,021,270,859	4.01%
Cargo Carriers	107,135,728	9.55%	1,068,439,362	6.79%	1,194,886,109	6.18%
<b>TOTAL LANDED WEIGHT (LBS)</b>	<b>1,212,560,587</b>	<b>5.87%</b>	<b>13,993,015,708</b>	<b>4.47%</b>	<b>15,216,156,968</b>	<b>4.18%</b>
<b>MAIL</b>						
Enplaned	2,002,333	-0.12%	25,222,928	13.61%	26,497,126	12.74%
Deplaned	1,251,789	4.99%	13,325,150	2.82%	14,460,802	2.55%
<b>TOTAL MAIL (LBS)</b>	<b>3,254,122</b>	<b>1.79%</b>	<b>38,548,078</b>	<b>9.63%</b>	<b>40,957,928</b>	<b>8.92%</b>
<b>CARGO</b>						
Enplaned	17,256,562	12.15%	162,994,982	4.21%	180,074,500	3.99%
Deplaned	19,032,046	3.19%	189,670,549	2.95%	209,688,486	2.79%
<b>TOTAL CARGO (LBS)</b>	<b>36,288,608</b>	<b>7.27%</b>	<b>352,665,531</b>	<b>3.53%</b>	<b>389,762,986</b>	<b>3.34%</b>
<b>MAIL &amp; CARGO</b>						
Enplaned	8,628	12.15%	81,497	4.21%	90,037	3.99%
Deplaned	9,516	3.19%	94,835	2.95%	104,844	2.79%
<b>TOTAL MAIL &amp; CARGO (TONS)</b>	<b>18,144</b>	<b>7.27%</b>	<b>176,332</b>	<b>3.53%</b>	<b>194,881</b>	<b>3.34%</b>
<b>AIRCRAFT OPERATIONS</b>						
Passenger Aircraft	19,638	2.24%	231,762	1.49%	252,414	1.45%
All-Cargo Aircraft	1,788	3.83%	18,696	3.28%	20,734	2.62%
General Aviation	4,417	7.94%	52,924	12.30%	56,702	12.34%
Military	497	-18.66%	6,132	-10.35%	6,519	-10.72%
<b>TOTAL AIRCRAFT OPERATIONS</b>	<b>26,340</b>	<b>2.76%</b>	<b>309,514</b>	<b>3.02%</b>	<b>336,369</b>	<b>2.93%</b>



**SALT LAKE CITY INTERNATIONAL AIRPORT  
PASSENGER TRAFFIC REPORT  
ELEVEN MONTHS ENDED NOVEMBER 2018**

	November 2017	November 2018	% CHANGE	YTD 2017	YTD 2018	% CHANGE	12 MO ROLLING Ending 11/2018	% CHANGE
<b>ENPLANED PASSENGERS</b>								
AEROMEXICO	-	3,887	100.0%	-	39,830	100.0%	40,081	100.0%
AIR CANADA	-	-	0.0%	17,393	-	-100.0%	0	-100.0%
ALASKA	21,045	13,193	-37.3%	267,447	222,895	-16.7%	243,608	-16.4%
Horizon Air / Alaska	1,771	-	-100.0%	32,700	7,174	-78.1%	9,045	-75.1%
SkyWest / Alaska	5,605	12,141	116.6%	68,239	106,805	56.5%	112,171	52.6%
AMERICAN	46,678	38,338	-17.9%	579,823	579,092	-0.1%	632,061	1.0%
Compass	1,873	1,812	-3.3%	34,433	21,754	-36.8%	23,644	-38.6%
Envoy Air	-	-	0.0%	1,137	-	-100.0%	-	-100.0%
American/Mesa Air	-	-	0.0%	-	3,272	100.0%	3,272	100.0%
SkyWest (American)	4,943	9,446	91.1%	86,541	97,016	12.1%	103,025	14.1%
DELTA	498,863	533,735	7.0%	5,850,685	6,137,356	4.9%	6,599,561	4.5%
SkyWest (Delta Connection)	158,772	146,013	-8.0%	1,865,293	1,756,379	-5.8%	1,936,855	-5.5%
Compass (Delta Connection)	15,199	40,953	169.4%	92,159	372,402	304.1%	393,657	308.3%
FRONTIER	21,290	22,590	6.1%	214,132	260,724	21.8%	281,512	20.6%
JETBLUE	26,549	26,673	0.5%	298,184	339,705	13.9%	371,605	16.1%
KLM ROYAL DUTCH AIRLINES	-	-	0.0%	19,955	21,316	6.8%	21,316	6.8%
SOUTHWEST	95,630	100,660	5.3%	1,147,835	1,204,947	5.0%	1,303,764	5.0%
UNITED	13,932	19,142	37.4%	267,251	264,294	-1.1%	283,790	-3.7%
GoJet Airlines	-	-	0.0%	-	12,437	100.0%	13,097	100.0%
Express Jet	-	50	100.0%	31	418	1248.4%	518	1571.0%
Mesa Airlines (United Express)	4,118	3,664	-11.0%	14,773	34,919	136.4%	36,679	133.1%
Republic Airways (United)	1,554	2,019	29.9%	35,981	14,763	-59.0%	15,563	-59.4%
SkyWest (United Express)	21,406	25,898	21.0%	250,229	276,647	10.6%	296,307	9.8%
Trans States	44	-	-100.0%	319	-	-100.0%	0	-100.0%
Charters	697	106	-84.8%	7,179	2,163	-69.9%	2,513	-70.1%
West Coast Charters	-	0	0.0%	-	2	100.0%	2	100.0%
<b>TOTAL ENPLANED PASSENGERS</b>	<b>939,969</b>	<b>1,000,320</b>	<b>6.4%</b>	<b>11,151,719</b>	<b>11,776,308</b>	<b>5.6%</b>	<b>12,723,644</b>	<b>5.3%</b>
<b>DEPLANED PASSENGERS</b>								
AeroMexico	-	3,574	100.0%	-	39,639	100.0%	39,923	100.0%
AIR CANADA	-	-	0.0%	16,789	-	-100.0%	0	-100.0%
ALASKA AIR	20,082	12,671	-36.9%	261,960	215,555	-17.7%	236,962	-17.1%
Horizon Air / Alaska	1,820	-	-100.0%	29,917	7,524	-74.9%	9,473	-71.9%
SkyWest / Alaska	5,826	12,217	109.7%	71,727	106,274	48.2%	111,855	44.8%
AMERICAN	45,720	37,442	-18.1%	571,530	578,437	1.2%	634,480	2.2%
Compass	1,740	1,738	-0.1%	33,912	21,166	-37.6%	23,140	-38.9%
Envoy Air (American)	-	-	0.0%	1,017	-	-100.0%	-	-100.0%
American/Mesa Air	-	-	0.0%	-	3,052	100.0%	3,052	100.0%
SkyWest (American)	4,716	9,423	99.8%	83,348	97,923	17.5%	104,321	19.8%
DELTA	494,530	529,015	7.0%	5,834,809	6,123,023	4.9%	6,603,416	4.6%
SkyWest (Delta Connection)	158,859	146,781	-7.6%	1,855,061	1,749,577	-5.7%	1,937,036	-5.1%
Compass (Delta Connection)	14,627	40,763	178.7%	90,726	362,775	299.9%	385,490	305.7%
FRONTIER	21,262	21,995	3.4%	218,214	260,146	19.2%	281,350	17.9%
JETBLUE	26,246	26,913	2.5%	295,665	339,256	14.7%	372,789	16.9%
KLM ROYAL DUTCH AIRLINES	-	-	0.0%	39,726	38,587	-2.9%	38,587	-2.9%
SOUTHWEST	95,522	98,668	3.3%	1,144,902	1,197,556	4.6%	1,299,845	4.6%
UNITED	12,722	19,597	54.0%	254,576	261,634	2.8%	281,642	-0.1%
GoJet Airlines	-	-	0.0%	-	13,374	100.0%	14,012	100.0%
Express Jet	-	40	100.0%	75	419	458.7%	518	590.7%
Mesa Airlines / United Express	3,978	3,531	-11.2%	15,119	34,777	130.0%	36,483	125.6%
Republic Airways (United)	1,525	1,888	23.8%	37,371	15,516	-58.5%	16,384	-59.3%
SkyWest (United Express)	21,382	24,343	13.8%	250,681	267,085	6.5%	287,345	6.1%
Trans States	53	-	-100.0%	314	-	-100.0%	0	-100.0%
Charters	637	109	-82.9%	7,410	2,076	-72.0%	2,609	-70.1%
West Coast Charters	-	-	0.0%	-	2	100.0%	2	100.0%
<b>TOTAL DEPLANED PASSENGERS</b>	<b>931,247</b>	<b>990,708</b>	<b>6.4%</b>	<b>11,114,849</b>	<b>11,735,371</b>	<b>5.6%</b>	<b>12,720,712</b>	<b>5.4%</b>
<b>TOTAL PASSENGERS*</b>	<b>1,871,216</b>	<b>1,991,028</b>	<b>6.4%</b>	<b>22,266,568</b>	<b>23,511,679</b>	<b>5.6%</b>	<b>25,444,356</b>	<b>5.3%</b>
<b>INTERNATIONAL - ENPLANED</b>								
AEROMEXICO	-	3,887	100.0%	-	39,830	100.0%	40,081	100.0%
AIR CANADA	-	-	0.0%	17,393	-	-100.0%	0	-100.0%
DELTA	18,892	24,922	31.9%	292,446	354,680	21.3%	378,855	19.7%
SkyWest (Delta Connection)	4,615	1,776	-61.5%	77,129	17,896	-76.8%	23,652	-71.5%
Compass	2,050	390	-81.0%	9,469	56,491	496.6%	56,491	496.6%
KLM ROYAL DUTCH AIRLINES	-	-	0.0%	19,955	21,316	6.8%	21,316	6.8%
Charters	141	-	-100.0%	142	-	-100.0%	-	-100.0%
<b>TOTAL ENPLANED INTERNATIONAL</b>	<b>25,698</b>	<b>30,975</b>	<b>20.5%</b>	<b>416,534</b>	<b>490,213</b>	<b>17.7%</b>	<b>520,395</b>	<b>16.3%</b>
<b>DEPLANED INTERNATIONAL</b>								
AEROMEXICO	-	3,574	100.0%	-	39,639	100.0%	39,923	100.0%
AIR CANADA	-	-	0.0%	16,789	-	-100.0%	0	-100.0%
DELTA	18,538	24,179	30.4%	296,656	359,388	21.1%	382,709	19.7%
SkyWest (Delta Connection)	4,295	1,692	-60.6%	75,203	17,696	-76.5%	23,326	-71.2%
Compass	1,994	397	-80.1%	9,705	56,203	479.1%	56,203	479.1%
KLM ROYAL DUTCH AIRLINES	-	-	0.0%	39,726	38,587	-2.9%	38,587	-2.9%
Charters	-	-	0.0%	-	-	0.0%	133	100.0%
<b>TOTAL DEPLANED INTERNATIONAL</b>	<b>24,827</b>	<b>29,842</b>	<b>20.2%</b>	<b>438,079</b>	<b>511,513</b>	<b>16.8%</b>	<b>540,881</b>	<b>15.6%</b>
<b>TOTAL INTERNATIONAL PASSENGERS</b>	<b>50,525</b>	<b>60,817</b>	<b>20.4%</b>	<b>854,613</b>	<b>1,001,726</b>	<b>17.2%</b>	<b>1,061,276</b>	<b>16.0%</b>

\*Includes International

**SALT LAKE CITY INTERNATIONAL AIRPORT  
ELEVEN MONTHS ENDED NOVEMBER 2018**  
Based on Total Enplanements

**MARKET SHARE**

	November 2017	MARKET SHARE	November 2018	MARKET SHARE	YTD 2017	MARKET SHARE	YTD 2018	MARKET SHARE	12 MO ROLLING Ending 11/2017	12 MO ROLLING Ending 11/2018	MARKET SHARE
AEROMEXICO	-	0.00%	3,887	0.39%	-	0.00%	39,830	0.34%	-	40,081	0.32%
AIR CANADA	-	0.00%	-	0.00%	17,393	0.16%	-	0.00%	18,100	-	0.00%
ALASKA	28,421	3.02%	25,334	2.53%	368,386	3.30%	336,874	2.86%	401,365	364,824	2.87%
AMERICAN	53,494	5.69%	49,596	4.96%	701,934	6.29%	701,134	5.95%	758,501	762,002	5.99%
DELTA	672,834	71.58%	720,701	72.05%	7,808,137	70.02%	8,266,137	70.19%	8,460,398	8,930,073	70.18%
FRONTIER	21,290	2.26%	22,590	2.26%	214,132	1.92%	260,724	2.21%	233,512	281,512	2.21%
JETBLUE	26,549	2.82%	26,673	2.67%	298,184	2.67%	339,705	2.88%	320,085	371,605	2.92%
KLM ROYAL DUTCH	-	0.00%	-	0.00%	19,955	0.18%	21,316	0.18%	19,955	21,316	0.17%
SOUTHWEST	95,630	10.17%	100,660	10.06%	1,147,835	10.29%	1,204,947	10.23%	1,241,514	1,303,764	10.25%
UNITED	41,054	4.37%	50,773	5.08%	568,584	5.10%	603,478	5.12%	619,552	645,954	5.08%
Charters	697	0.07%	106	0.01%	7,179	0.06%	2,163	0.02%	8,408	2,513	0.02%
<b>TOTAL ENPLANEMENTS</b>	<b>939,969</b>	<b>100%</b>	<b>1,000,320</b>	<b>100%</b>	<b>11,151,719</b>	<b>100%</b>	<b>11,776,308</b>	<b>100%</b>	<b>12,081,390</b>	<b>12,723,644</b>	<b>100%</b>

**PERCENT CHANGE YOY**

	November 2017	November 2018	PERCENT CHANGE	YTD 2017	YTD 2018	PERCENT CHANGE	12 MO ROLLING Ending 11/2017	12 MO ROLLING Ending 11/2018	PERCENT CHANGE
AEROMEXICO	-	3,887	100.00%	-	39,830	100.00%	-	40,081	100.00%
AIR CANADA	-	-	#DIV/0!	17,393	-	-100.00%	18,100	-	-100.00%
ALASKA	28,421	25,334	-10.86%	368,386	336,874	-8.55%	401,365	364,824	-9.10%
AMERICAN	53,494	49,596	-7.29%	701,934	701,134	-0.11%	758,501	762,002	0.46%
DELTA	672,834	720,701	7.11%	7,808,137	8,266,137	5.87%	8,460,398	8,930,073	5.55%
FRONTIER	21,290	22,590	6.11%	214,132	260,724	21.76%	233,512	281,512	20.56%
JETBLUE	26,549	26,673	0.47%	298,184	339,705	13.92%	320,085	371,605	16.10%
KLM ROYAL DUTCH	-	-	0.00%	19,955	21,316	0.00%	19,955	21,316	6.82%
SOUTHWEST	95,630	100,660	5.26%	1,147,835	1,204,947	4.98%	1,241,514	1,303,764	5.01%
UNITED	41,054	50,773	23.67%	568,584	603,478	6.14%	619,552	645,954	4.26%
Charters	697	106	-84.79%	7,179	2,163	-69.87%	8,408	2,513	-70.11%
<b>TOTAL ENPLANEMENTS</b>	<b>939,969</b>	<b>1,000,320</b>	<b>6.4%</b>	<b>11,151,719</b>	<b>11,776,308</b>	<b>5.6%</b>	<b>12,081,390</b>	<b>12,723,644</b>	<b>5.3%</b>

**SALT LAKE CITY INTERNATIONAL AIRPORT  
LANDING ACTIVITY  
ELEVEN MONTHS ENDED NOVEMBER 2018**

	November 2017	November 2018	CHANGE	YTD 2017	YTD 2018	CHANGE	12 MO ROLLING Ending 11/2018	% CHANGE
<b>TOTAL NUMBER OF LANDINGS</b>								
<b>SCHEDULED CARRIERS</b>								
AEROMEXICO	-	30	100.0%	-	333	100.0%	335	100.0%
AIR CANADA	-	-	0.0%	230	-	-100.0%	-	-100.0%
ALASKA	170	109	-35.9%	2,149	1,711	-20.4%	1,880	-20.3%
Horizon Air / Alaska	30	-	-100.0%	534	140	-73.8%	171	-71.3%
Skywest / Alaska	89	195	119.1%	1,084	1,684	55.4%	1,771	51.0%
AMERICAN	361	301	-16.6%	4,229	4,426	4.7%	4,849	5.6%
Compass	30	30	0.0%	554	346	-37.5%	377	-38.6%
American/Mesa Air	-	-	0.0%	-	47	100.0%	48	4700.0%
Envoy Air (American)	1	-	-100.0%	18	1	-94.4%	2	-96.8%
SkyWest (American)	88	169	92.0%	1,448	1,592	9.9%	1,704	12.9%
DELTA	3,627	3,764	3.8%	42,600	43,778	2.8%	47,281	2.7%
SkyWest (Delta Connection)	2,935	2,690	-8.3%	35,132	32,530	-7.4%	35,809	-7.5%
Compass (Delta Connection)	224	597	166.5%	1,323	5,186	292.0%	5,517	297.2%
FRONTIER	133	137	3.0%	1,276	1,480	16.0%	1,609	15.3%
JETBLUE	222	206	-7.2%	2,268	2,521	11.2%	2,768	12.9%
KLM ROYAL DUTCH AIRLINES	-	-	0.0%	93	93	0.0%	93	0.0%
SOUTHWEST	865	853	-1.4%	10,165	10,111	-0.5%	10,993	0.1%
UNITED	114	149	30.7%	1,968	2,058	4.6%	2,216	1.0%
GoJet	-	-	0.0%	-	203	100.0%	237	100.0%
Express Jet	-	1	100.0%	2	10	400.0%	12	500.0%
Mesa / United Express	55	54	-1.8%	209	497	137.8%	522	134.1%
Republic Airways Holdings	23	30	30.4%	561	225	-59.9%	238	-59.8%
SkyWest (United Express)	353	406	15.0%	4,021	4,200	4.5%	4,626	6.3%
Trans States	1	-	-100.0%	7	-	-100.0%	-	-100.0%
<b>SUBTOTAL SCHEDULED CARRIERS:</b>	<b>9,321</b>	<b>9,721</b>	<b>4.3%</b>	<b>109,871</b>	<b>113,172</b>	<b>3.0%</b>	<b>123,058</b>	<b>2.9%</b>
<b>CHARTER CARRIERS</b>								
ALLEGiant AIR	2	-	-100.0%	10	6	-40.0%	6	-45.5%
BOMBARDIER BUSINESS JETS	10	9	-10.0%	212	177	-16.5%	201	-19.6%
BOUTIQUE AIR	82	-	-100.0%	1,215	205	-83.1%	288	-78.2%
DELTA PRIVATE JETS	13	-	-100.0%	198	185	-6.6%	201	-8.2%
EXECUTIVE JET MANAGEMENT	10	-	-100.0%	115	81	-29.6%	102	-23.9%
FLIGHT OPTIONS	2	-	-100.0%	96	38	-60.4%	51	-52.8%
KEYLIME AIR	-	-	0.0%	8	8	0.0%	9	0.0%
NETJETS	77	83	7.8%	1,191	1,174	-1.4%	1,313	-1.6%
SUNSET AVIATION	1	-	-100.0%	52	31	-40.4%	32	-40.7%
SWIFT AIR	2	-	-100.0%	13	5	-61.5%	5	-73.7%
VIRGIN AMERICA	12	-	-100.0%	52	1	-98.1%	8	-91.5%
XOJET	14	-	-100.0%	173	91	-47.4%	114	-43.6%
OTHER CHARTER	59	9	-84.7%	968	708	-26.9%	820	-22.0%
<b>SUBTOTAL CHARTER CARRIERS:</b>	<b>284</b>	<b>101</b>	<b>-64.4%</b>	<b>4,303</b>	<b>2,710</b>	<b>-37.0%</b>	<b>3,150</b>	<b>-34.5%</b>
<b>CARGO CARRIERS</b>								
AERO CHARTER & TRANSPORT	22	-	-100.0%	240	157	-34.6%	178	-32.1%
AIR TRANSPORT INTERNATIONAL	2	-	-100.0%	8	4	-50.0%	7	-30.0%
ALPINE AVIATION	68	170	150.0%	620	1,605	158.9%	1,673	153.1%
AMERIFLIGHT	272	165	-39.3%	2,918	2,163	-25.9%	2,469	-24.3%
CORPORATE AIR (BILLINGS)	108	124	14.8%	1,200	1,331	10.9%	1,462	9.5%
EMPIRE	18	17	-5.6%	185	191	3.2%	207	2.5%
FEDERAL EXPRESS	136	158	16.2%	1,454	1,476	1.5%	1,641	1.0%
GEM AIR	49	79	61.2%	377	596	58.1%	677	49.4%
SOUTHERN AIR	43	45	4.7%	478	468	-2.1%	510	-3.2%
UPS	123	120	-2.4%	1,213	1,204	-0.7%	1,364	-0.4%
WESTERN AIR EXPRESS	13	7	-46.2%	303	85	-71.9%	105	-68.9%
OTHER CARGO	6	6	0.0%	56	67	19.6%	73	19.7%
<b>SUBTOTAL CARGO CARRIERS:</b>	<b>860</b>	<b>891</b>	<b>3.6%</b>	<b>9,052</b>	<b>9,347</b>	<b>3.3%</b>	<b>10,366</b>	<b>2.6%</b>
<b>TOTAL LANDINGS</b>	<b>10,465</b>	<b>10,713</b>	<b>2.4%</b>	<b>123,226</b>	<b>125,229</b>	<b>1.6%</b>	<b>136,574</b>	<b>1.5%</b>
<b>TOTAL LANDED WEIGHT</b>								
<b>SCHEDULED CARRIERS</b>								
AEROMEXICO	-	2,850,000	100.0%	-	32,060,583	100.0%	32,334,883	100.0%
AIR CANADA	-	-	0.0%	22,310,000	-	-100.0%	-	-100.0%
ALASKA	25,302,100	16,337,590	-35.4%	317,598,800	259,031,790	-18.4%	284,356,790	-18.4%
Horizon Air / Alaska	1,852,500	-	-100.0%	33,502,780	8,645,000	-74.2%	10,559,250	-71.7%
Skywest / Alaska	6,615,259	14,616,615	121.0%	79,652,312	125,780,276	57.9%	132,245,621	53.2%
AMERICAN	51,078,856	44,486,348	-12.9%	619,464,416	648,601,428	4.7%	708,569,008	5.5%
Compass	2,248,500	2,248,500	0.0%	41,522,300	25,932,700	-37.5%	28,256,150	-38.6%
Envoy Air (American)	74,950	-	-100.0%	1,341,150	74,950	-94.4%	141,950	-96.9%
American/Mesa Air	-	-	0.0%	-	3,484,900	100.0%	3,560,000	4743.5%
SkyWest (American)	5,896,000	11,323,000	92.0%	96,836,000	106,584,000	10.1%	114,088,000	13.0%
DELTA	541,958,944	580,287,538	7.1%	6,374,714,155	6,626,456,051	3.9%	7,154,756,611	3.6%
SkyWest (Delta Connection)	176,533,622	167,467,941	-5.1%	2,100,632,686	2,011,614,754	-4.2%	2,210,916,939	-4.5%
Compass (Delta Connection)	16,839,648	44,880,669	166.5%	99,367,459	389,867,922	292.3%	414,751,509	297.6%
FRONTIER	19,781,028	20,590,588	4.1%	193,199,744	231,670,946	19.9%	250,728,864	18.4%

**SALT LAKE CITY INTERNATIONAL AIRPORT  
LANDING ACTIVITY  
ELEVEN MONTHS ENDED NOVEMBER 2018**

	November 2017	November 2018	CHANGE	YTD 2017	YTD 2018	CHANGE	12 MO ROLLING Ending 11/2018	% CHANGE
JETBLUE	31,568,400	29,293,200	-7.2%	322,509,226	358,486,200	11.2%	393,609,600	12.9%
KLM ROYAL DUTCH AIRLINES	-	-	0.0%	39,576,150	39,703,438	0.3%	39,703,438	0.3%
SOUTHWEST	112,527,600	112,355,600	-0.2%	1,318,822,000	1,320,260,800	0.1%	1,435,222,800	0.8%
UNITED	16,123,600	21,320,480	32.2%	285,880,980	295,398,080	3.3%	318,075,320	0.2%
GoJet	-	-	0.0%	-	15,225,000	100.0%	17,775,000	100.0%
Express Jet	-	44,092	100.0%	88,184	440,920	400.0%	529,104	500.0%
Mesa / United Express	4,125,000	4,050,000	-1.8%	15,675,000	37,275,000	137.8%	39,150,000	134.1%
Republic Airways Holdings	1,676,401	2,190,520	30.7%	40,642,637	16,516,185	-59.4%	17,458,886	-59.3%
SkyWest (United Express)	24,259,604	28,110,820	15.9%	276,749,605	294,218,953	6.3%	323,455,579	8.1%
Trans States	53,100	-	-100.0%	326,700	-	-100.0%	-	-100.0%
<b>SUBTOTAL SCHEDULED CARRIERS:</b>	<b>1,038,515,112</b>	<b>1,102,453,501</b>	<b>6.2%</b>	<b>12,280,412,284</b>	<b>12,847,329,876</b>	<b>4.6%</b>	<b>13,930,245,302</b>	<b>4.4%</b>
<b>CHARTER CARRIERS</b>								
ALLEGiant AIR	279,000	134,481	-51.8%	1,395,000	822,929	-41.0%	822,929	-48.3%
BOMBARDIER	413,518	330,706	-20.0%	7,762,790	7,039,998	-9.3%	7,999,120	-11.8%
BOUQUET AIR	957,650	-	-100.0%	13,143,230	2,685,810	-79.6%	3,793,650	-73.5%
DELTA PRIVATE JETS	315,450	-	-100.0%	5,183,850	4,347,950	-16.1%	4,705,650	-19.3%
EXECUTIVE JET MANAGEMENT	403,600	-	-100.0%	5,480,099	3,448,785	-37.1%	4,423,935	-29.2%
FLIGHT OPTIONS	33,730	-	-100.0%	2,085,340	664,790	-68.1%	931,875	-59.8%
KALITTA CHARTERS	27,320	191,920	602.5%	347,440	643,120	85.1%	658,420	26.0%
KEYLIME AIR	-	-	0.0%	253,794	253,792	0.0%	285,516	0.0%
NETJETS	2,403,622	2,391,371	-0.5%	35,707,339	34,272,131	-4.0%	38,515,961	-4.1%
SIERRA PACIFIC	-	-	0.0%	855,000	985,000	15.2%	985,000	15.2%
SUN COUNTRY	146,300	-	-100.0%	2,047,600	877,800	-57.1%	2,340,500	6.7%
SWIFT AIR	242,000	-	-100.0%	1,171,925	598,000	-49.0%	598,000	-68.5%
VIRGIN AMERICA	1,706,376	-	-100.0%	7,404,217	142,198	-98.1%	1,137,584	-91.5%
XOJET	458,850	67,500	-85.3%	5,655,450	2,971,800	-47.5%	3,724,650	-43.5%
OTHER CHARTER	1,702,661	-	-100.0%	23,258,320	17,480,399	-24.8%	20,090,799	-21.9%
<b>SUBTOTAL CHARTER CARRIERS:</b>	<b>9,090,077</b>	<b>3,115,978</b>	<b>-65.7%</b>	<b>111,751,394</b>	<b>77,234,502</b>	<b>-30.9%</b>	<b>91,013,589</b>	<b>-30.5%</b>
<b>CARGO CARRIERS</b>								
AERO CHARTER & TRANSPORT	150,700	-	-100.0%	1,647,070	1,074,950	-34.7%	1,218,800	-32.2%
AIR TRANSPORT INTERNATIONAL	36,000	-	-100.0%	148,500	73,500	-50.5%	129,000	-30.6%
ALPINE AVIATION	1,022,000	2,404,200	135.2%	9,358,000	22,913,800	144.9%	23,930,600	138.9%
AMERIFLIGHT	3,861,650	2,480,068	-35.8%	41,491,800	31,922,584	-23.1%	36,217,428	-21.9%
ATLAS AIR	1,088,000	1,848,000	69.9%	9,928,000	15,834,000	59.5%	17,018,000	71.4%
CORPORATE AIR (BILLINGS)	918,000	1,054,000	14.8%	10,200,000	11,313,500	10.9%	12,427,000	9.5%
EMPIRE	672,616	691,026	2.7%	6,797,805	6,899,031	1.5%	7,591,725	0.8%
FEDEX EXPRESS	47,381,000	53,162,500	12.2%	497,677,700	509,333,200	2.3%	569,338,700	2.3%
GEM AIR	394,000	633,300	60.7%	2,946,380	4,942,300	67.7%	5,584,300	59.0%
SOUTHERN AIR INC	5,249,384	5,520,374	5.2%	58,058,324	57,042,557	-1.7%	62,165,143	-2.9%
UPS	36,681,060	39,106,640	6.6%	356,527,460	405,592,800	13.8%	456,699,060	12.0%
WESTERN AIR EXPRESS	155,400	91,000	-41.4%	3,796,100	1,091,400	-71.2%	1,351,400	-68.2%
OTHER CARGO	163,400	-	-100.0%	2,454,594	417,708	-83.0%	846,921	-68.2%
<b>SUBTOTAL CARGO CARRIERS:</b>	<b>97,773,210</b>	<b>106,991,108</b>	<b>9.4%</b>	<b>1,001,031,733</b>	<b>1,068,451,330</b>	<b>6.7%</b>	<b>1,194,518,077</b>	<b>6.1%</b>
<b>TOTAL LANDED WEIGHT</b>	<b>1,145,378,399</b>	<b>1,212,560,587</b>	<b>5.9%</b>	<b>13,393,787,411</b>	<b>13,993,015,708</b>	<b>4.5%</b>	<b>15,216,156,968</b>	<b>4.2%</b>

**SALT LAKE CITY INTERNATIONAL AIRPORT  
CARGO ACTIVITY REPORT  
ELEVEN MONTHS ENDED NOVEMBER 2018**

	November 2017	November 2018	CHANGE	YTD 2017	YTD 2018	CHANGE	12 MO ROLLING Ending 11/2018	% CHANGE
<b>ENPLANED CARGO</b>								
<b>PASSENGER CARRIERS</b>								
ALASKA	19,800	16,006	-19.16%	164,861	230,556	39.85%	244,619	46.87%
Horizon Air / Alaska	52	-	-100.00%	928	249	-73.17%	344	-62.93%
Skywest / Alaska	-	-	0.00%	1,030	-	-100.00%	-	-100.00%
AMERICAN	50,628	22,093	-56.36%	237,679	438,953	84.68%	482,395	94.77%
American Eagle/Republic	-	-	0.00%	-	-	0.00%	-	0.00%
Compass	-	-	0.00%	-	-	0.00%	-	0.00%
Envoy Air (American)	-	-	0.00%	-	-	0.00%	-	-100.00%
Mesa	-	-	0.00%	-	36	100.00%	36	100.00%
SkyWest (American)	-	-	0.00%	479	-	-100.00%	-	-100.00%
DELTA	1,264,558	875,908	-30.73%	12,171,694	10,446,564	-14.17%	11,759,041	-11.38%
KLM ROYAL DUTCH	-	-	0.00%	400,078	971,393	142.80%	971,393	142.80%
SOUTHWEST	275,848	360,474	30.68%	3,468,613	3,227,472	-6.95%	3,486,835	-6.54%
UNITED	9,625	20,283	110.73%	59,380	111,406	87.62%	115,292	78.79%
Others	-	-	0.00%	9,955	-	-100.00%	-	-100.00%
<b>CARGO CARRIERS</b>								
FEDEX EXPRESS*	7,852,848	8,827,229	12.41%	82,708,225	88,280,731	6.74%	97,070,387	6.34%
GEM AIR	45,415	64,492	42.01%	365,497	598,604	63.78%	681,867	58.71%
SOUTHERN AIR	491,678	413,055	-15.99%	4,207,304	4,481,907	6.53%	4,795,331	5.27%
UPS	4,404,357	4,886,209	10.94%	42,844,102	40,725,723	-4.94%	45,881,151	-4.97%
MISC CARGO	971,676	1,770,813	82.24%	9,772,715	13,481,388	37.95%	14,585,809	36.01%
<b>TOTAL ENPLANED CARGO</b>	<b>15,386,485</b>	<b>17,256,562</b>	<b>12.15%</b>	<b>156,412,540</b>	<b>162,994,982</b>	<b>4.21%</b>	<b>180,074,500</b>	<b>3.99%</b>
<b>DEPLANED CARGO</b>								
<b>PASSENGER CARRIERS</b>								
ALASKA	27,431	14,390	-47.54%	266,404	266,614	0.08%	297,373	2.78%
Horizon Air / Alaska	214	-	-100.00%	5,032	3,176	-36.88%	3,949	-24.91%
Skywest / Alaska	1,273	-	-100.00%	6,800	1,386	-79.62%	1,754	-75.01%
AMERICAN	33,372	18,432	-44.77%	389,318	350,799	-9.89%	370,440	-11.68%
American Eagle/Republic	-	-	0.00%	-	-	0.00%	-	0.00%
Compass	-	-	0.00%	6,826	88	-98.71%	88	-98.71%
Envoy Air (American)	-	-	0.00%	-	-	0.00%	-	-100.00%
SkyWest (American)	49	1,548	3059.18%	6,388	5,663	-11.35%	5,715	-10.54%
DELTA	1,516,070	1,448,665	-4.45%	16,601,481	15,092,190	-9.09%	16,671,100	-8.50%
KLM ROYAL DUTCH	-	-	0.00%	894,108	1,310,703	46.59%	1,310,703	46.59%
SOUTHWEST	346,986	400,811	15.51%	4,255,430	4,016,292	-5.62%	4,411,861	-3.84%
UNITED	29,902	36,252	21.24%	298,533	370,750	24.19%	395,208	18.87%
Others	-	-	0.00%	43,330	1,480	-96.58%	1,480	-97.31%
<b>CARGO CARRIERS</b>								
FEDEX EXPRESS*	8,926,900	9,161,207	2.62%	91,113,345	94,124,658	3.31%	103,752,823	2.92%
GEM AIR	21,834	20,591	-5.69%	200,255	211,909	5.82%	231,347	9.25%
SOUTHERN AIR	537,323	599,794	11.63%	4,836,083	5,262,448	8.82%	5,769,248	5.39%
UPS	6,697,803	6,084,415	-9.16%	61,887,174	62,408,929	0.84%	69,937,696	1.70%
MISC CARGO	303,931	1,245,941	309.94%	3,422,817	6,243,464	82.41%	6,527,701	67.13%
<b>TOTAL DEPLANED CARGO</b>	<b>18,443,088</b>	<b>19,032,046</b>	<b>3.19%</b>	<b>184,233,324</b>	<b>189,670,549</b>	<b>2.95%</b>	<b>209,688,486</b>	<b>2.79%</b>
<b>TOTAL CARGO</b>	<b>33,829,573</b>	<b>36,288,608</b>	<b>7.27%</b>	<b>340,645,864</b>	<b>352,665,531</b>	<b>3.53%</b>	<b>389,762,986</b>	<b>3.34%</b>

\*FEDEX EXPRESS includes mail



Salt Lake City  
Department of Airports

**COMPARISON OF ON TIME OPERATIONS**  
October 2018

**ARRIVALS**

Airport	Flights	% On Time	Rank
SLC SALT LAKE CITY INTL	10,068	89.3	1
HNL HONOLULU	4,476	88.9	2
DTW DETROIT METRO WAYNE CNTY	15,011	88.8	3
BWI BALTIMORE/WASHINGTON INTL	8,921	88.4	4
ATL HARTSFIELD-JACKSON ATLANTA INTL	33,234	88.1	5
IAD WASHINGTON DULLES	8,434	87.1	6
MSP MINNEAPOLIS-ST. PAUL INTL	13,876	87.0	7
MIA MIAMI INTL	6,948	86.4	8
CLT CHARLOTTE DOUGLAS	21,624	86.2	9
FLL FT. LAUDERDALE	7,556	85.8	10
TPA TAMPA INTL	5,736	85.5	11
MDW CHICAGO MIDWAY	7,547	84.8	12
JFK NEW YORK JFK INTL	11,020	84.7	13
PDX PORTLAND INTL	7,247	84.1	14
MCO ORLANDO INTL	11,006	84.0	15
DEN DENVER INTL	23,283	83.7	16
DCA RONALD REAGAN NATIONAL	12,423	82.7	17
LAS LAS VEGAS MCCARRAN INTL	14,351	82.7	18
PHL PHILADELPHIA INTL	13,183	82.4	19
ORD CHICAGO O HARE	34,324	81.8	20
SFO SAN FRANCISCO INTL	15,230	81.8	21
LAX LOS ANGELES INTL	21,118	80.9	22
SAN SAN DIEGO LINDBERGH FIELD	8,189	80.9	23
PHX PHOENIX SKY HARBOR INTL	14,796	80.7	24
IAH HOUSTON GEORGE BUSH	14,920	79.3	25
LGA NEW YORK LAGUARDIA	14,844	76.2	26
BOS BOSTON LOGAN INTL	13,193	76.0	27
DFW DALLAS-FT. WORTH REGIONAL	23,625	73.8	28
SEA SEATTLE-TACOMA INTL	15,479	70.8	29
EWR NEWARK LIBERTY INTERNATIONAL	14,020	69.5	30
<b>AVERAGES</b>	<b>14,189</b>	<b>82.7</b>	

**DEPARTURES**

Airport	Flights	% On Time	Rank
HNL HONOLULU	4,101	92.4	1
SLC SALT LAKE CITY INTL	9,575	89.6	2
DTW DETROIT METRO WAYNE CNTY	13,396	89.4	3
MSP MINNEAPOLIS-ST. PAUL INTL	13,722	88.8	4
IAD WASHINGTON DULLES	6,217	88.6	5
TPA TAMPA INTERNATIONAL	5,734	88.5	6
ATL HARTSFIELD-JACKSON ATLANTA INTL	33,140	88.0	7
PDX PORTLAND INTERNATIONAL	5,195	87.9	8
JFK NEW YORK JFK INTL	11,016	87.7	9
BWI BALTIMORE/WASHINGTON INTL	8,830	86.9	10
FLL FT. LAUDERDALE	7,553	86.7	11
MIA MIAMI INTL	6,936	86.1	12
IAH HOUSTON GEORGE BUSH	14,890	85.4	13
PHL PHILADELPHIA INTL	9,866	84.8	14
DCA RONALD REAGAN NATIONAL	11,827	84.7	15
MCO ORLANDO INTL	10,950	84.6	16
CLT CHARLOTTE DOUGLAS	20,213	84.2	17
SFO SAN FRANCISCO INTL	14,761	83.9	18
ORD CHICAGO O HARE	29,626	83.3	19
SAN SAN DIEGO LINDBERGH FIELD	7,744	83.1	20
LAX LOS ANGELES INTL	18,565	82.4	21
LAS LAS VEGAS MCCARRAN INTL	14,045	82.1	22
PHX PHOENIX SKY HARBOR INTL	14,497	82.0	23
DEN DENVER INTERNATIONAL	20,613	81.9	24
LGA NEW YORK LAGUARDIA	14,848	81.5	25
SEA SEATTLE-TACOMA INTL	11,681	81.0	26
BOS BOSTON LOGAN INTERNATIONAL	13,018	80.2	27
EWR NEWARK LIBERTY INTERNATIONAL	12,424	80.0	28
MDW CHICAGO MIDWAY	7,518	76.5	29
DFW DALLAS-FT. WORTH REGIONAL	23,529	73.6	30
<b>AVERAGES</b>	<b>13,201</b>	<b>84.5</b>	

**ON TIME ARRIVAL PERFORMANCE AT SLC**

By Carrier

Air Carrier	Flights	% On Time
DL DELTA	7,282	92.2%
AS ALASKA	300	85.3%
UA UNITED	638	85.1%
WN SOUTHWEST	906	83.8%
B6 JETBLUE	207	80.7%
AA AMERICAN	568	76.9%
F9 FRONTIER	167	67.7%
<b>AVERAGES</b>	<b>10,068</b>	<b>89.3%</b>

Source: DOT Air Travel Consumer Report

# **DESIGN AND CONSTRUCTION REPORT**

## TABLE OF CONTENTS

- I. Area Map of Project Locations
- II. Project Schedule
- III. Construction Analysis
- IV. Design and Construction Report

SALT LAKE CITY DEPARTMENT OF AIRPORTS  
January 9, 2019



Salt Lake City  
International Airport

## 2018 - 2019 Project Legend

### Airfield

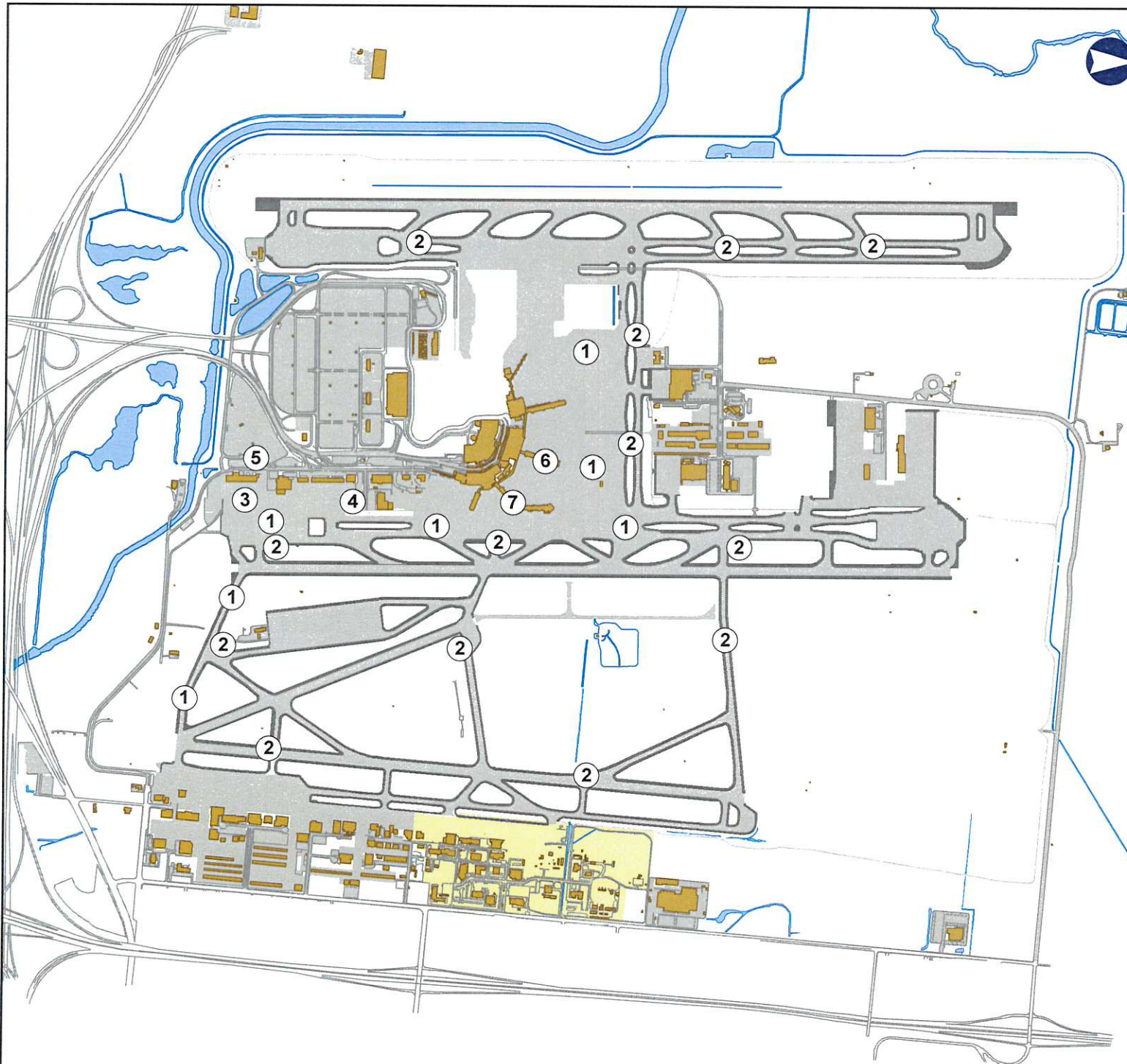
1. Airfield Lighting Wiring Rehabilitation Phases 2 & 3
2. Airfield Signage Replacement
3. Asphalt Overlay Program 2018
4. Central Screening Warehouse

### Landside

5. 3700 W. Realignment/Employee Parking Expansion/AOC Parking Lot

### Terminal









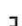





6. Concourse C7 Public Restroom Renovation
7. Concourse B5 Public Restroom Renovation





SALT LAKE CITY INTERNATIONAL AIRPORT  
CONSTRUCTION PROGRAM  
2016/2017 Construction Schedule

ID	Task Name	Start	Finish	2018											
				Sep '18	Oct '18	Nov '18	Dec '18	Jan '19	Feb '19	Mar '19	Apr '19	May '19	Jun '19		
1	<b>Airfield</b>	<b>Tue 8/1/17</b>	<b>Fri 8/30/19</b>												
2	(1) Airfield Lighting Wiring Rehabilitation Phases 2 & 3	Mon 4/1/19	Mon 7/8/19												
3	(2) Airfield Signage Replacement	Tue 8/1/17	Fri 12/21/18												
4	(3) Asphalt Overlay Program 2018	Fri 5/25/18	Fri 11/9/18												
5	(4) Central Screening Warehouse	Thu 1/3/19	Fri 8/30/19												
6	<b>Landside</b>	<b>Mon 4/16/18</b>	<b>Tue 12/11/18</b>												
7	(5) 3700 W Realignment/Emp Parking Expansion/AOC Parking Lot	Mon 4/16/18	Tue 12/11/18												
8	<b>Terminal</b>	<b>Wed 8/8/18</b>	<b>Mon 1/28/19</b>												
9	(6) Concourse B5 Restroom Renovations	Fri 9/21/18	Mon 1/28/19												
10	(7) Concourse C7 Public Restrooms Renovations	Wed 8/8/18	Mon 11/19/18												

Date: Wed 1/9/19	DESIGN		Inactive Milestone		Manual Summary	
	CONSTRUCTION		Inactive Summary		Start-only	
	SCOPING		Manual Task		Finish-only	
	SUMMARY		Duration-only		Deadline	
	Inactive Task		Manual Summary Rollup			

**SALT LAKE CITY DEPARTMENT OF AIRPORTS  
CONSTRUCTION PROJECT STATUS 2018 - 2019**

#	PROJECT NAME	ENGINEER'S ESTIMATE	BID AMOUNT	APPROVED CHANGE ORDERS TO DATE	% OF COST INCREASE TO DATE	STATUS	CONTRACTOR
<b>CONSTRUCTION</b>							
2	Airfield Signage Replacement	\$ 3,916,511	\$ 1,844,679	\$ 7,147	0.39%	complete	Skyline Electric Company
3	Asphalt Overlay Program 2018	\$ 643,705	\$ 896,720			complete	Advanced Paving & Construction
4	Central Screening Warehouse	\$ 4,771,730	\$ 4,237,990			on schedule	Paulsen Construction
5	3700 W Realignment/Emp Parking Expansion/AOC Parking Lot	\$ 2,678,403	\$ 2,865,202	\$ 10,958	0.38%	complete	Geneva Rock Products
6	Concourse C7 Restrooms Renovations	\$ 831,432	\$ 768,800	\$ 135,763*	20.13%	complete	AIS Commerical Inc.
7	Concourse B5 Restrooms Renovations	\$ 1,114,578	\$ 948,800	\$ 129,395**	13.64%	on schedule	AIS Commerical Inc.
	<b>Sub-Total</b>	<b>\$ 13,956,359</b>	<b>\$ 11,562,191</b>	<b>\$ 283,263</b>	<b>2.45%</b>		
<b>DESIGN/BID/AWARD</b>							
1	Airfield Lighting Wiring Rehabilitation Phases 2 & 3	\$ 2,580,000	\$ 2,222,222			award	Royal Electric
	<b>Total</b>	<b>\$ 16,536,359</b>	<b>\$ 13,784,413</b>	<b>\$ 283,263</b>	<b>2.05%</b>		
*Per airline request, contractor overtime has been approved to reduce the restroom closure to 90 days and additional temporary restroom facilities for airline employees have been deployed.							
**Per airline request, additional temporary restroom facilities for airline employees have been deployed.							
Budget amount, Engineer's estimate, and Bid amount is based on construction cost only.							

## DESIGN AND CONSTRUCTION REPORT

### DESIGN/BID/AWARD

- (1) **Airfield Lighting Wiring Rehabilitation Phases 2 & 3** - The Contractor, Royal Electric will begin construction in the spring of 2019 due to the unavailability of construction materials in the fall of 2018. Shipments of wire and other construction materials received by the Contractor during the fourth quarter of 2018 and the first quarter of 2019 are securely stored on SLCDA property.

### CONSTRUCTION

- (2) **Airfield Signage Replacement** - The Contractor was granted substantial completion on December 21, 2018. Punch list items are being completed as weather permits and parts are available.
- (3) **Asphalt Overlay Program 2018** - The Contractor was issued substantial completion for this project on November 9, 2018. All punch list items have been completed. Close-out documents are being prepared.
- (4) **Central Screening Warehouse** - Construction contracts were executed and recorded on December 27, 2018. The demolition permit was issued on January 3, 2019 with the demolition Contractor mobilizing on site and starting building demolition January 7, 2019. SLC building permit comments have been addressed and it is anticipated that the building permit will be issued shortly.
- (5) **3700 West Realignment/Employee Parking Expansion/AOC Parking Lot** - The Contractor was issued substantial completion for this project on December 11, 2018. Punch list items are being completed as weather permits.
- (6) **Concourse C7 Public Restrooms Renovations** - The Contractor was issued substantial completion on November 19, 2018. All punch list items have been completed. Close-out documents are being prepared.
- (7) **Concourse B5 Public Restrooms Renovation** - This project is on schedule and nearing completion. Substantial completion is anticipated for January 27, 2019.



**January 2019  
Media Clippings**

**Advisory Board Meeting**

<https://slcairport.com/assets/pdfDocuments/AABoard/MediaClippingsJan2019.pdf>

**Compiled by P.R. & Marketing Dept.**