

SLC Tops Off the North Concourse

The New SLC Redevelopment Program celebrated another major milestone on March 19, 2019, when one of the last steel beams was placed on top of the North Concourse building.

The North Concourse broke ground in January 2018, and since that time workers have installed thousands of stone columns, poured approximately 16,190 cubic yards of concrete and erected more than 5,000 tons of structural steel.



Topping Out Ceremony. Photo courtesy: Sue Zaybal

The North Concourse was not part of the original Terminal Redevelopment Program, but was announced May 2016. Initially, the airport planned to continue using concourses F, C and D and planned to build the North Concourse at a future date. Tremendous passenger growth and significant facility deficiencies -

that would require costly renovations - moved up the timeline.

The first phase of the North Concourse will include 20 gates in a 465,775 sq. ft. building. The second phase will include 10 gates in a 364,479 sq. ft. building with the ability to add 15 gates to the east for a total of 45 gates. Though the flexible gate layout will serve a mix of aircraft sizes, the North Concourse will be used primarily for narrow-body and small, wide-body aircraft.

The \$850 million North Concourse is being built by Austin Okland, which is a joint venture between Texas-based Austin Commercial and Salt Lake-based Okland Construction.

Public Art Opportunity for The New SLC

The Salt Lake City Department of Airports and the Salt Lake Arts Council have announced an exciting opportunity for artists. When The New SLC opens in fall of 2020, the facilities will feature a number of unique art installations. One of the installations is The New SLC Art Wall, which will be a large art installation (30 x 11 feet) located at the TSA security checkpoint.



Rendering of The New SLC Art Wall location.

The location for the installation is a high-visibility area, which means more than 25 million passengers going through airport screening each year will see the artwork. The two entities are seeking artwork that speaks to the spirit, cultures, people and context of Utah. Artists responding to the Request for Qualifications must demonstrate a proficiency in executing work on a similar scope and scale. The deadline for submissions is April 17, 2019. For more information, [click here](#).

Construction Updates

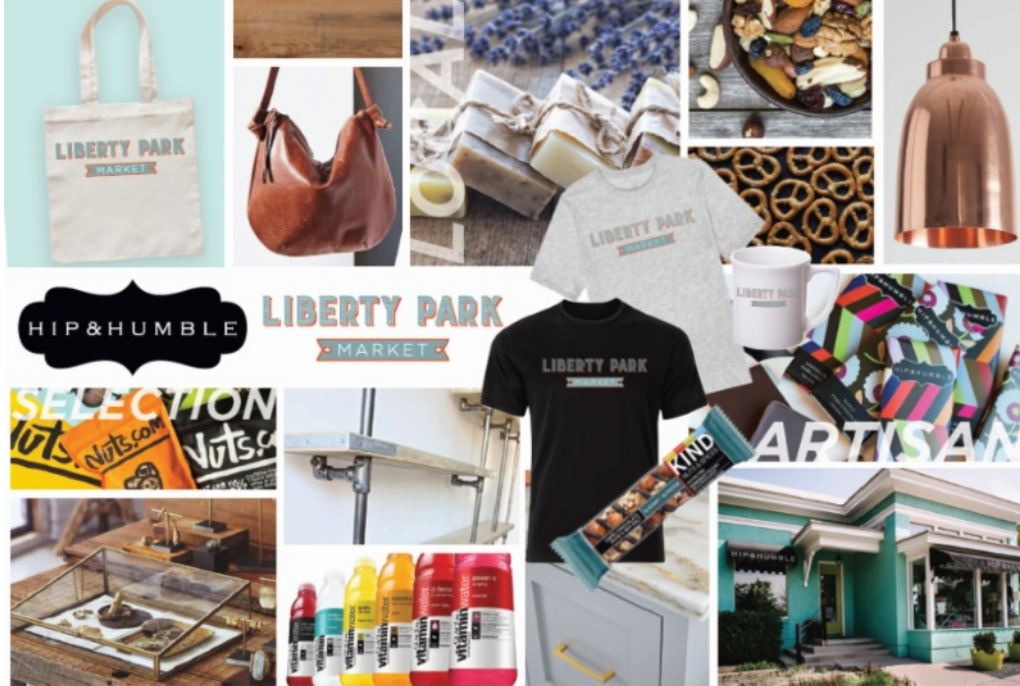
- Elevated roadway taking shape. The final roadway girder was put in place last October. These girders are 105 ft. long and weigh 90,000 lbs. A total of 152 girders have been installed.
- Mid-Concourse Tunnel connected. The 800 ft. tunnel built in 2004 has been connected to both the North and South Concourses.
- Pedestrian bridges installed. The bridges connecting the Gateway to the Terminal building are now in place. Each section of the bridge is 137 feet long and 16 feet high.



Pedestrian bridges installed from the Gateway to the Terminal

New Retail and Restaurants Announced

If you missed the retail and food and beverage announcements, go to www.slairport.com to learn more about the concessions planned in the first phase of The New SLC.



Did You Know?

- The Plaza's curtain glass wall has 65 sections that are 8 x 10 feet each.
- The New SLC will have 1.5 miles of baggage conveyor along with six TSA luggage screening machines.
- The Terminal building and South Concourse-West will have 24 escalators. Each escalator truss weighs 30,000 lbs.

Share Your Story

The New SLC is coming in 2020, but before we bid a fond farewell to the current airport, we want to collect the countless memories and experiences from the many who have traveled through the Salt Lake City International Airport since the early 1960s.

The best stories gathered here will be shared on the slcairport.com website and via the airport's social media channels. Some may even appear in a forthcoming book capturing and celebrating the history of SLC. Don't keep those great stories to yourself. Let us know why SLC is unforgettable at www.slcairport.com/stories. We look forward to reading your story!

Stay Tuned

For updates on the construction progress, go to www.slairport.com/thenewslc or follow us on Twitter, Facebook Instagram and YouTube.



www.slairport.com