

THE NEW SLC

AIRPORT REDEVELOPMENT PROGRAM

PHASE 2 COMING IN 2023–2024

The New SLC Email Alert - Fall 2022

The New SLC Celebrates 2nd Anniversary and 12 Million Craft Hours

In September, the Salt Lake City Department of Airports, Big D and Holder Construction marked the second anniversary of The New SLC by thanking the 700-plus team members currently on site working to build Phases 2 and 3, while acknowledging the work of all those who came before. Since the groundbreaking ceremony in July 2014, 12 million craft hours have gone into building the Airport Redevelopment Program. Now that's taking care of business!

Watch a video highlighting this amazing milestone.



Airport Redevelopment Program workers enjoy a BBQ lunch to celebrate reaching 12 million craft hours on the project, as Concourse B-east takes shape in the distance.

Seeking Shops and Restaurants for Phase 3

The Salt Lake City Department of Airports (SLCDA) is looking for a variety of local, regional and national brands for the 13 retail and restaurant spaces available in Phase 3 – the nine-gate expansion of Concourse B-east.

The Request for Proposal (RFP) information and link to register on Utah Public Procurement Place are available on Salt Lake City Municipal's purchasing webpage at www.slcgov.com/purchasing.

Interested businesses must be registered in order to download the RFP as well as instructions on how to submit a proposal. Deadline for submissions is Jan. 20, 2023.

The New SLC-Phase 3 encompasses 19,261 sq. ft. of restaurant and retail space. A total of six food and beverage locations are planned, including three full-service restaurants with alcohol service, a local or national fast-food or

gourmet/specialty burger brand, a quick serve restaurant, and a dedicated full-service coffee concept. In addition, seven specialty retail and news and gift locations are planned for Phase 3.

Other items SLCDA will consider when selecting concessions are pricing, hours of operation and service standards. The SLCDA selection committee will review all proposals to determine if the submissions meet the minimum requirements. The proposals will then be ranked, and meetings will be scheduled with the top-ranked firms before final selections are made.

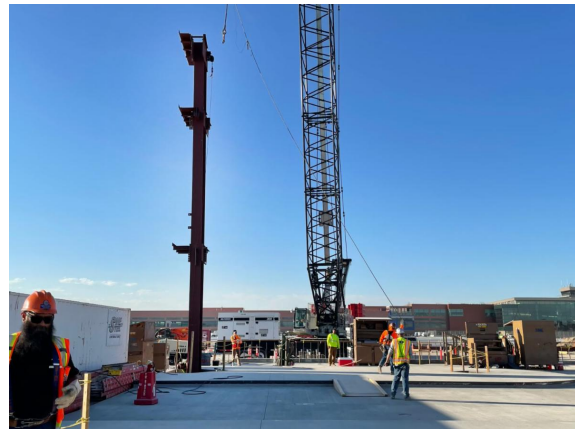
The first five gates of Phase 3 are scheduled to open in fall of 2024, followed by four additional gates in the fall of 2025.

Phase 3 of The New SLC Takes Shape



Last month, the Salt Lake City Department of Airports began erecting the steel structure for the future Concourse B-east. Since the first beam was placed on Sept. 7, the construction crew has made a tremendous amount of progress. Construction on Phase 3 is scheduled to be completed in 2024/2025 adding more gates to more destinations.

For more information on future construction phases, visit slcairport.com.



The first steel beam being placed for Phase 3 on Sept. 7.

SLC Airport Ranked in Top 10 by J.D. Power

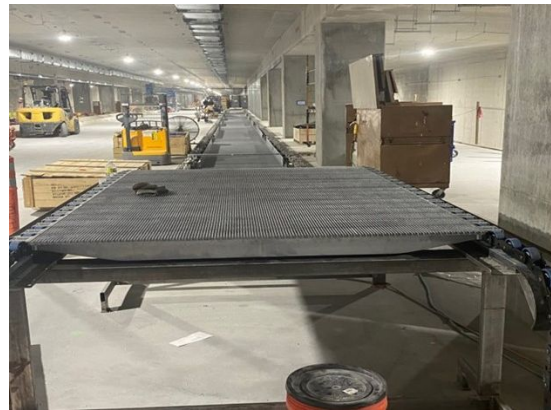


J.D. Power recently ranked SLC International in the top 10 for large airports in its 2022 North America Airport Satisfaction Study. The study measures overall traveler satisfaction by examining terminal facilities, arrival/departure, baggage claim, security screening, check-in/baggage check, as well as food, beverage and retail offerings. **[Learn more about the rankings, travel trends and how other airports fared.](#)**

Central Tunnel Marks Half-way Point



A rendering of “The River Tunnel” – designed by artist Gordon Huether.



Moving walkways being installed in the Central Tunnel in late September.

After 21 months of construction, the Central Tunnel reached its half way point in August. **[Watch this video](#)** to get a behind the scenes look at the tunnel's construction and learn more about The River Tunnel – an immersive art experience designed to create a sense of walking on the floor of a river, with light and natural currents overhead.

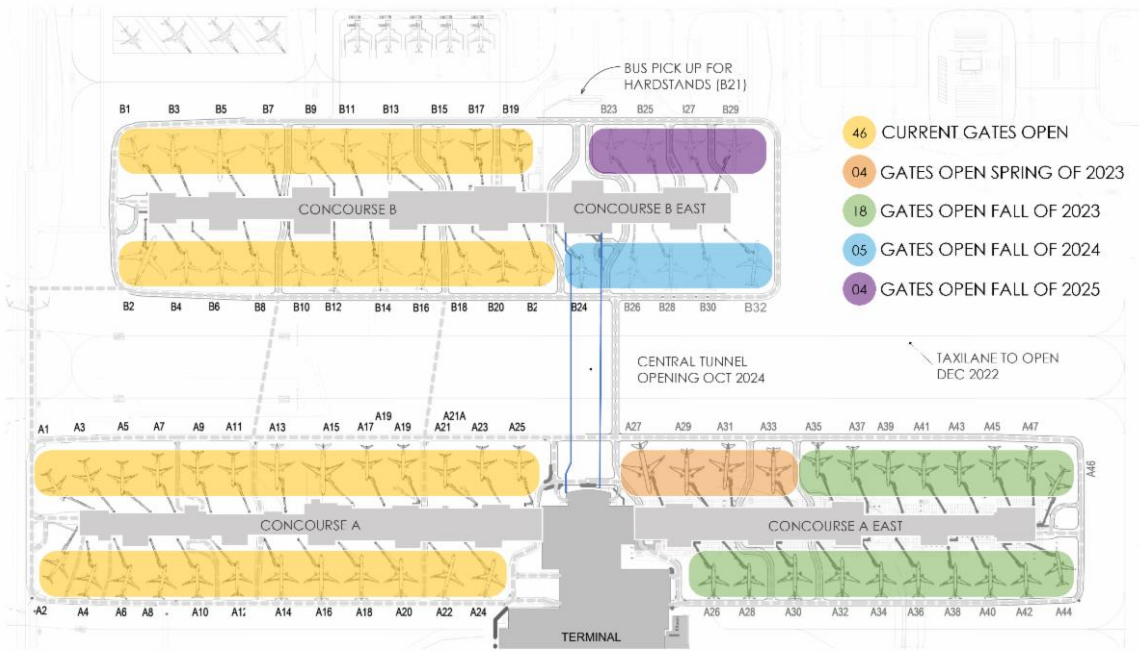
Artist Recognized for Tunnel Murals



Congratulations to Utah Artist Traci O'Very Covey! Her seasonal murals in SLC's Mid-Concourse Tunnel were selected for the 2022 CODAwards Top 100 public art projects from around the world.

O'Very Covey was selected by SLC to paint the Summer and Autumn murals in the Mid-Concourse Tunnel, which were commissioned to help travelers experience the beauty of the four seasons in Utah. Her designs were inspired by her travels through the state and brought to life through her imagination and signature style. [Learn more](#) about the project and the award.

Opening Dates for Phases 2 and 3



This color-coded map shows the timeline for Phases 2 and 3 and when new gates are set to open. The Central Tunnel – which connects concourses A and

B – is scheduled to open in October 2024. In May 2023, the first four gates on Concourse A-east will open followed by 18 gates in the fall.

The New SLC Construction Progress

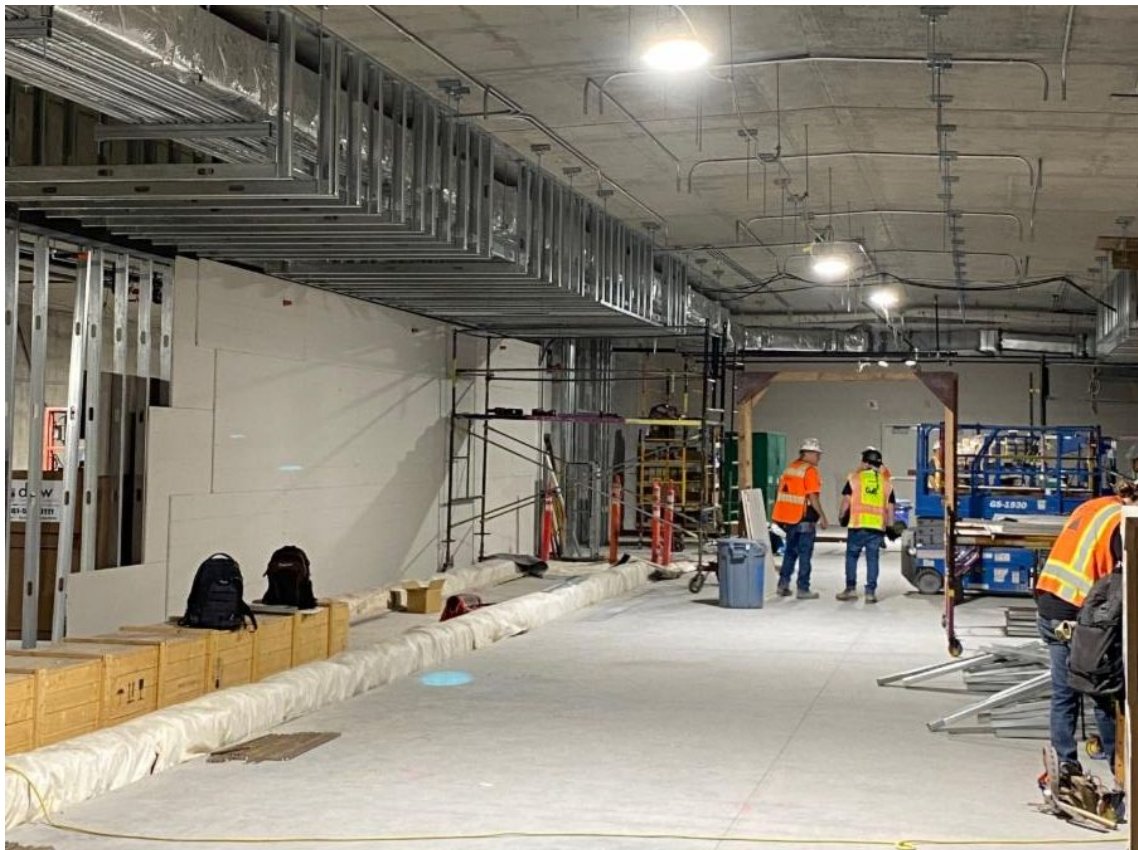
Phases 2 and 3 of The New SLC are taking shape, as work on the Central Tunnel. Phases 2 and 3 include the extension of concourses A and B to the east. The following are a few photos highlighting the work underway.



Erecting steel for Concourse B-east



Sealing the final lid opening of the Central Tunnel



Framing soffits in the Central Tunnel



Installing the early bag storage system

For more updates on the progress of Phase 2, [click here](#).
To watch a new orientation video from level 1, [click here](#).

For more info...

Previous editions of The New SLC newsletter are available [here](#).
For updates on the construction progress, visit the website [here](#) or follow us on Twitter, Facebook, Instagram, LinkedIn and YouTube.

Follow SLC on Social Media

