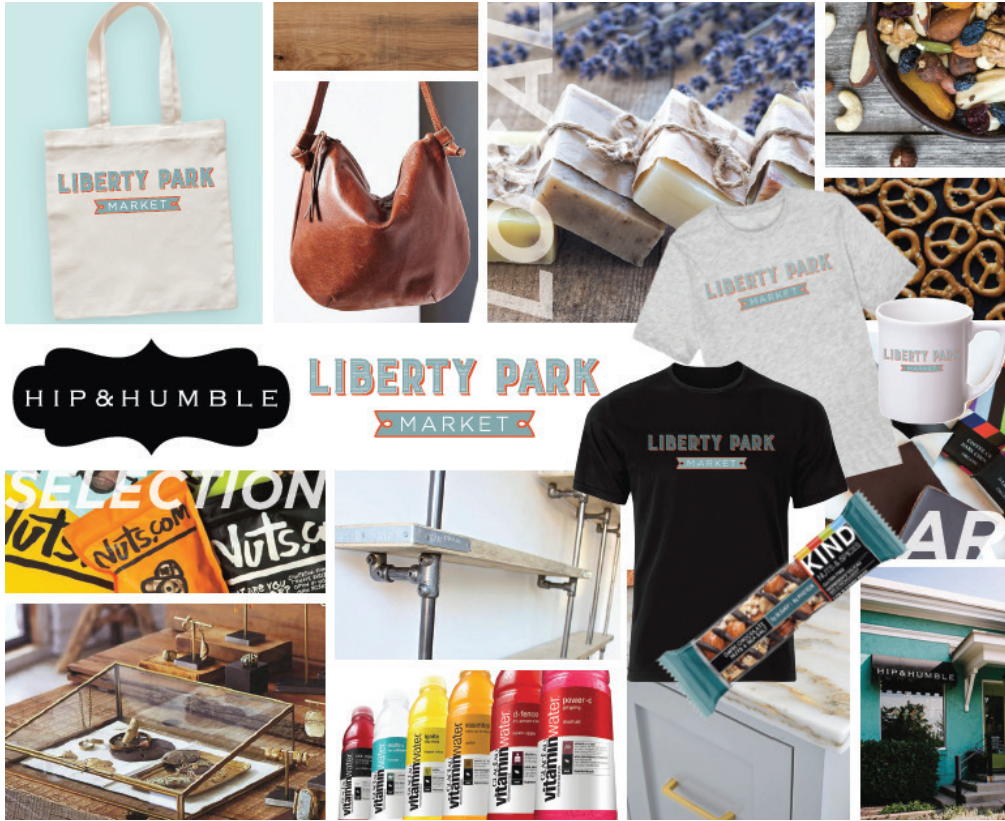


Winter 2019

Elevations



Restaurants for The New SLC Announced

Come fall of 2020, passengers flying through Salt Lake City International Airport (SLC) are going to be wowed not only by a new airport, but by the wide array of food and beverage options to choose from. From American and Asian to Italian and Mexican, passengers' palates will be delighted with the selection.

The first phase of The New SLC will include 23 concepts from Cafe Rio, HMS Host, LaTrelles, OHM, SSP America, Salt Lake Brewing Company and The Grove. The selection includes a number of home-grown options that are local favorites.

"Our passengers are hungry for a variety of food and beverage options," said Bill Wyatt, executive director, Salt Lake City Department of Airports. "Today's traveler expects airports to provide a quality selection of restaurants with affordable pricing. Whether it's casual fare or fine dining they will find it at The New SLC Airport."

Popular options like Cafe Rio, Market Street Grill, Smashburger and Squatters are returning along with new concepts, such as Fillings & Emulsions, Granatos, Pago, Panera Bread, Silver Diner and Shake Shack. All restaurants will offer breakfast, lunch and dinner menus.

A welcome dining option pre-security on the second level will house Blue Lemon and a Starbucks will be located pre-security on level one. Additional food and beverage concepts will be added to the program for the second phase of The New SLC, which is due to open in 2024/25.

Retail Shops Announced for The New SLC

The review process is complete, the selections have been made and the contracts signed. And now the Salt Lake City International Airport (SLC) has announced the retail, news and gift stores for the first phase of The New SLC Redevelopment Program opening in fall of 2020.

Hudson Group, Paradies Lagardère, Sweet Ventures, Inc., XpresSpa—representing 29 stores—have been selected for the first phase of The New SLC. A mix of local, regional and national stores were chosen, including brands new to SLC Airport such as Coach, Frye, King's English, Hip & Humble and MAC. In addition, traditional shops currently located in the airport

are part of the mix, such as Dufry Duty Free, No Boundaries and Utah!

"Our team went through an extensive selection process to get the right combination of local, regional and national brands for those traveling through SLC," said Bill Wyatt, executive director, Salt Lake City Department of Airports. "We are thrilled with the outcome and I think our passengers will be excited with the combination of dynamic shops opening in 2020."

SLC Airport will also implement street pricing in shops located in the new facilities. This means passengers will pay the same price charged at the store locations outside of the airport.

Continued on next page

Continued on next page



New SLC Retail Shops (cont.)

Concourse A/Terminal

- CNBC
- Central Pointe Market
- Coach
- Deseret News
- Dufry Duty Free
- Frye
- Hip & Humble
- iStore
- Johnston & Murphy
- KSL TV/King's English
- Land Speed Depot
- MAC
- No Boundaries
- Rocky Mountain Chocolate Factory
- Something Silver
- Tech on the Go/Wicked
- Trip Advisor/King's English
- Tumi
- Visit Salt Lake
- XpresSpa

Concourse B

- Liberty Park Market with Hip & Humble
- InMotion
- Maverik
- The Salt Lake Tribune
- Tumi
- Utah!
- XpresSpa

Pre-Security

- Hudson News
- Maverick

New SLC Restaurants (cont.)

As with the retail component of The New SLC, street pricing is planned for food and beverage. This means passengers will pay the same price charged at the store locations outside of the airport.

Concourse A/Terminal Plaza

- Beans & Brews
- Bruges Belgian Bistro-Cafe Rio
- California Pizza Kitchen
- Fillings & Emulsions
- Granatos
- Market Street Grill
- Panda Express
- Pago
- Panera Bread
- Pizzeria Limone
- Pulp Lifestyle Kitchen
- Shake Shack
- SLC Life Market/Creminelli Fine Meats
- Squatters Pub
- Starbucks (2)
- White Horse Spirits & Kitchen

Concourse B

- Pick Up Stix
- Silver Diner
- Smashburger
- Uinta Brewing Company
- Wasatch Pub

Pre-Security

- Blue Lemon
- Starbucks (Level One)

SLC Airport Summary Statistics January through December 2018

Passengers

Domestic	
Total Enplaned	12,250,382
Total Deplaned	12,231,902
Total Passengers	24,482,284
International	
Total Enplaned	526,114
Total Deplaned	545,846
Total Passengers	1,071,960

Landed Weight (lbs.)

Air Carrier	14,070,627,335
Cargo	1,204,030,421
Total Landed Weight	15,274,657,756

Mail (lbs.)

Enplaned	26,565,358
Deplaned	14,468,568
Total Mail	41,033,926

Cargo (lbs.)

Enplaned	165,806,179
Deplaned	187,941,565
Total Cargo	353,747,744

Operations

Passenger Aircraft	252,768
All Cargo Aircraft	20,744
General Aviation	52,924
Military	6,132
Total Aircraft Ops	332,568

Airport News & Notes



2019 Owner of the Year Award

The Salt Lake City International Airport (SLC) has received the 2019 Owner of the Year Award from the Associated General Contractors of Utah. The award was presented on Jan. 23 at Little America Hotel in recognition of The New SLC Airport Redevelopment Program.

No Boundaries Named Best Airport Shop for Local Merchandise

SLC's No Boundaries has been named in USA Today 10Best Readers' Choice for 2019. Nominees are chosen by a panel of relevant experts, which includes a combination of editors from USA Today. Voting to the public was open for four weeks. No Boundaries came in ninth place. No Boundaries is located in Terminal 2 outside of security screening. The shop sells high-quality outdoor gear, equipment and apparel.

New Air Service Coming to SLC

Get ready for some surf and sun! Delta Air Lines begins nonstop service between SLC and Santa Barbara on Aug. 12, 2019. In addition, Southwest Airlines has announced additional flights to Houston, Oakland, Sacramento, San Diego and San Jose will begin this summer.