

SAY HELLO TO THE NEW



PHASE 3 COMING IN FALL 2024

The Falls art installation by Gordon Huether

**SAY
HELLO
TO MORE
SPACIOUS
GATE
AREAS**



**SAY
HELLO
TO MORE
FLIGHTS
TO MORE
DESTINATIONS**



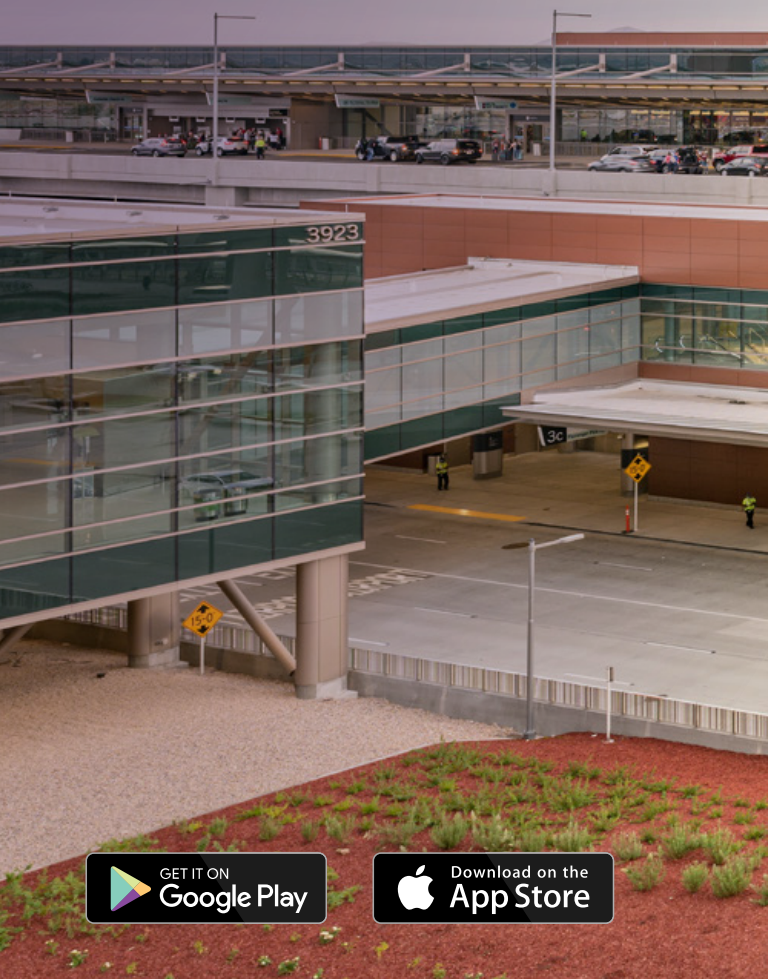
**SAY
HELLO
TO MORE
SHOPS AND
RESTAURANTS**



**SAY
HELLO
TO AN
AIRPORT
FILLED WITH
TECH**



SAY HELLO TO YOUR BIGGER,
BETTER, AND BRAND NEW
SALT LAKE CITY INTERNATIONAL
AIRPORT (SLC), PHASE 3
ARRIVING IN FALL 2024.



GET IT ON
Google Play



Download on the
App Store



INTERNATIONAL



slcairport.com

THE NEW SLC

The New SLC is designed to accommodate 34 million passengers and has replaced the five former concourses with two linear concourses—A and B Concourses—which are connected by a passenger tunnel.

The \$5.1 billion project is being built in phases. The first phase opened in fall of 2020 and the second phase opened in fall 2023. A third phase is slated to open in fall 2024. The first phase included a new terminal, a new parking garage with double the capacity, and portions of the two new concourses. The new concourses are able to accommodate larger planes and all gates have boarding bridges.

The project created more than 24,000 jobs and generated more than \$1 billion in wages over the construction period. The total economic impact of The New SLC Phase 1 is more than \$5.5 billion.



2014-15

- Unveiled design of The New SLC
- Broke ground on The New SLC
- Started construction of Rental Car Service Facilities
- Completed economy parking lot expansion

In accordance with the requirements of Title II of the Americans with Disabilities Act of 1990, Salt Lake City Corporation does not discriminate against qualified individuals with disabilities on the basis of disability in the City's services, programs or activities, or employment practices. Information, comments, and/or complaints concerning the accessibility of Salt Lake City International Airports programs, services or activities as they relate to people with disabilities should be directed to (801) 575-2400.

CONVENIENT



- Separate arrival and departure levels
- Parking garage with 3,600 parking stalls
- On site car rental pick-up and drop-off counters
- One central terminal and security checkpoint
- UTA Airport TRAX line at the terminal—ground level
- Baggage claim on the same level as the parking garage entrance
- Tech friendly with more locations to plug-in
- More shopping and dining options
- Spacious gate areas with plenty of seating
- Easy wayfinding and moving walkways
- Greeting Room area set aside for large groups awaiting arrivals



2016-17

- Opened Rental Car Service Facilities
- Announced addition of Concourse B
- Redirected Terminal Drive to free-up space for terminal construction
- Demolished former rental car service facilities and south leg of Concourse E
- Installed more than 7,000 underground stone columns for seismic stability
- Started Terminal baggage tunnel excavation
- Drove piles for Terminal, Concourse A-west, and Gateway Center
- Started construction on Central Utility Plant, Gateway Center, Parking Garage, Terminal, and Concourse A-west.
- Opened new Park and Wait Lot and Touch n' Go Convenience Store

INSPIRING

- Utah's natural beauty highlighted in the airport interior with The Canyon and Falls art installations
- Local materials, sandstone, copper colors, and native plants used throughout
- Art and elements provide a "sense of place" within the facility
- Windows throughout provide light and views of the mountains
- Plaza area with seating, dining, and a large glass window overlooking the airfield

The Canyon by Artist Gordon Huether



2018-19

- Broke ground on Concourse B-west
- Continued construction on the Central Utility Plant, Gateway Center, Parking Garage, Terminal, and Concourse A-west

2020

- Unveiled Gateway, Parking Garage, Terminal, A and B Concourses-west
- Began demolition of former parking garage, Terminals 1 and 2, and Concourses E and G

SUSTAINABLE

- Seismic upgrades
- Energy efficient and use of natural light
- Goal of LEED Gold Certified
- A “Roadmap to Net Zero” program
- Airline ground service fleets converted to energy efficient vehicles
- Maintain low costs for airlines and airport users

FUNDING

Salt Lake City Dept. of Airports is an enterprise fund of Salt Lake City Corporation, which means the airport is financially self-sustaining. The city's general fund revenues do not support the Airport's operation and no local tax dollars are being spent on The New SLC. The construction of the new facilities are being paid for by Airport cash, federal grants, passenger facility charges, rental car user fees, and revenue bonds.

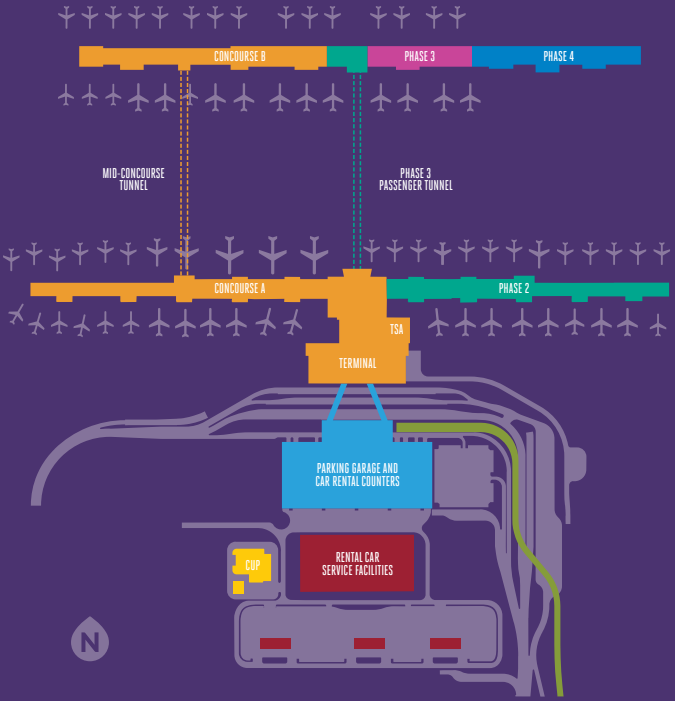


2021

- Demolished former airport garage, remaining terminals and concourses
- Installed stone columns and steel piles for Concourse A-east
- Excavated ground to build the Central Tunnel

2022-24

- Construct Concourse A-east
- Announced new concessions for Concourse A-east
- Continue build out of Central Tunnel connecting A and B Concourses
- Opened Concourse A-east; 5 gates in May 2023, 4 gates in August 2023; 13 gates in October 2023
- Open Concourse B-east; 5 gates in Fall 2024 and the Central Tunnel



- Terminal and Concourses
- Mid-Concourse Tunnel
- Phase 3 - Future Passenger Tunnel
- Phase 2 - Concourse A-east (Opened in 2023)
- Phase 3 - Concourse B Expansion (Opening Fall 2024)
- Phase 4 - Future Concourse B Expansion
- Parking Garage and Car Rental Counters
- Rental Car Service Facilities
- UTA TRAX Line to Terminal
- Central Utility Plant