

DEPARTMENT OF AIRPORTS
BOARD MEETING

21 February 2018

AGENDA



Salt Lake City
Department of Airports

**SALT LAKE CITY DEPARTMENT OF AIRPORTS
BOARD MEETING AGENDA**

21 February 2018
8:00 A.M.

CONSENT AGENDA

- A. Minutes of the 17 January 2018 Meeting

DISCUSSION ITEMS

- B. Director's Report – Bill Wyatt, Executive Director, SLCDCA
- C. Airport Redevelopment Program (ARP) Update – Mike Williams, ARP Director, SLCDCA
- D. Northwest Quadrant Update – Lara Fritts, Economic Development Director, SLC

INFORMATION ITEMS

- A. Financial Report – December 2017
- B. Air Traffic Statistics – December 2017
- C. Comparison of On-Time Operations – November 2017
- D. Construction Report – February 2018
- E. Media Clippings – February 2018

The next meeting will be held on **Wednesday, March 21, 2018**, at 8:00 a.m. Meetings are held in the Board Room located on the third level of the short-term parking garage. People with disabilities may make requests for reasonable accommodations no later than 48 hours in advance in order to attend this Airport Board Meeting. Accommodations may include alternate formats, interpreters, and other auxiliary aids. This is an accessible facility. For questions or additional information, please contact LuJean Christensen at 801-575-2096.

DEPARTMENT OF AIRPORTS
BOARD MEETING

21 February 2018

MINUTES

SALT LAKE CITY DEPARTMENT OF AIRPORTS MINUTES OF ADVISORY BOARD MEETING

17 January 2018

Members Present:	Larry Pinnock, Vice-Chair Igor Best-Devereux Mickey Gallivan Natalie Gochnour Senator Karen Mayne Cyndy Miller Kim Rolfe
Excused:	J.T. Martin, Chair Sam Granato Steven Price
Mayor's Office:	Mayor Jacqueline M. Biskupski Patrick Leary
City Council Office:	James Rogers Russell Weeks
Department of Airports:	Bill Wyatt, Executive Director John Buckner, Director of Administration & Commercial Services Brian Butler, Airport Controller Ed Cherry, Chief Information Officer Eddie Clayson, Director of Maintenance Kristen Elder, Management Analyst Pete Higgins, Director of Operations Marco Kunz, Attorney Allen McCandless, Director of Planning Kevin Robins, Director of Engineering Ryan Tesch, Director of Finance Craig Vargo, Police Chief Nancy Volmer, Director of Public Relations & Marketing Mike Williams, TRP Program Director

Larry Pinnock called the meeting to order at 8:02 a.m. Pinnock welcomed Mayor Jim Riding from West Jordan and thanked former Mayor Kim Rolfe's for his participation on the Board.

AGENDA

A. Minutes

The motion was made by Mickey Gallivan and seconded by Igor Best-Devereux to approve the minutes of October 18, 2017 as presented. All votes were affirmative; motion passed.

B. Director's Report

Bill Wyatt, Executive Director, updated the Airport Advisory Board regarding current events.

- Wyatt summarized the recent power outage at Hartsfield-Jackson Atlanta International Airport (ATL) and the ripple effect it had on airports across the country. Wyatt further explained that while ATL combined utility feeds and backup power systems within the same building, SLC's backup power is distributed throughout the airport campus. Rocky Mountain Power is working very closely with the Airport Redevelopment Program (ARP) team to plan appropriately for the new construction.

James Rogers and Natalie Gochmour arrived at the meeting at 8:05 am.

- Wyatt distributed a copy of the recent New York Times article about the ARP to the Board and emphasized the size and importance of this project to our community at large. Wyatt recognized the vision of Airport staff for the construction of the mid-concourse tunnel nearly two decades ago, which has allowed for current construction to be completed with minimal impact to existing facilities.

Patrick Leary arrived at the meeting at 8:12 a.m.

- Wyatt shared two slides (presentation on file) depicting original and current concept drawings and budgets for the Terminal Redevelopment Program (September 2016) and the Airport Redevelopment Program (December 2017).
 - As the airlines have requested additional capacity, the budget has changed to reflect the project's design and scope changes. The differences between the initial forecasts and the current Contractor Guaranteed Maximum Prices (CGMPs) have contributed to some of the confusion about the total ARP budget, which is now at \$3,575,970,327.
 - The reuse of existing pavement systems for the North Concourse Program (NCP) is not possible, which has resulted in a significant increase from original estimates. These complex reinforcement, fueling, water, electrical and storm water systems require a great deal of strength and redundancy. Another area of cost pressure is the market demand for materials and labor.
 - SLC has received a commitment from Delta's executive team to renegotiate their lease and extend the Airline Use Agreement another 10 years (through 2034). An agreement of this length is uncommon in the industry, and strengthens our position with the rating agencies because it is a clear financial commitment from our largest carrier to the ARP and the community.
 - Upon completion of the ARP, SLC will be in the enviable position of having a brand new airport and one of the lowest costs per passenger of any major airport in the U.S. The airlines are eager to see the project completed as soon as possible.

Best-Devereux expressed concern about inaccurate and conflicting news reports of the project's cost. Wyatt explained that the industry uses metrics to create ballpark estimates before design work begins, as was the case with the late addition of the NCP. These estimates are refined at the 90% design stage and again when the CGMPs are in place. Once it was clear that reconstruction of the apron was necessary for the NCP and would raise the cost, the airlines met with the Airport in December 2017 and agreed to move forward with the project.

Natalie Gochnour wondered how to best answer questions regarding the phased openings of the project. Wyatt outlined that the first phase will open in August of 2020 (the terminal, garage, South Concourse West and the Central Utility Plant) followed by the opening of the South Concourse East and the North Concourse in 2024. Wyatt agreed to present additional details of these phases during a future meeting. Wyatt also remarked that the Airport is meeting every other week with the program management team, the construction management team, and the airlines to make decisions regarding the project. Alternating weeks are spent on transition planning.

Best-Devereux asked if the issuance of additional bonds is contingent upon the 10-year lease extension. Wyatt reported that our financial statements show ourselves being able to do it, but the margin is narrow.

James Rogers announced that the City Council has approved the Community Reinvestment Area for the Northwest Quadrant and encouraged Wyatt to meet with the Colmena Group and build a positive working relationship with them. Wyatt noted that he is looking forward to connecting with them and acknowledged the importance of understanding what the possibilities are related to the airport and air cargo.

C. Airport Redevelopment Program Update

Mike Williams, Airport Redevelopment Program (ARP) Director, presented an update on the ARP (presentation on file). Main points included were:

- CGMP #4 – Landside and Airside Enabling status
- CGMP #5 – Terminal/South Concourse West/Gateway status
- CGMP #6 – Roadways/Parking Garage/Central Utility Plant status
- CGMP #7 – Baggage Handling System status
- CGMP #9 – Apron Paving – Taxilane 20/21 status
- CGMP #9A – SCW Apron Paving and Hydrant Fueling status
- North Concourse Project status
- Project statistics
- Overall program construction and paving sequence
- Near term schedule
- Overall Airport Redevelopment Program Budget
- Job progress photos
- North Concourse secure area
- North Concourse site fencing

Gochmour asked if a lot of people have moved into the State for the ARP. Williams answered that this is true, especially for the construction management, program management and HOK teams. Gochmour commented on reports from the Gardner Policy Institute that the net migration into Utah was 26,000 last year—the third year in a row where the net migration has been over 20,000. Generally seen as a positive economic sign, she added the importance of recognizing the Airport's role in that trend.

Senator Karen Mayne asked if many tradesmen and women are traveling to work on the ARP. Williams replied that while no data exists, the project is hiring local workers as much as possible.

Gallivan questioned what the new gate count will be upon completion of the project. Williams answered 78 contact gates, all with passenger loading bridges. Wyatt added that our existing facilities have just 56 gates with passenger loading bridges.

Best-Devereux asked what the current plan is for the Airport TRAX station. Williams indicated that the redesign of the station will bring it near the terminal with a canopy connecting the open platform to the terminal building.

Best-Devereux inquired about pet relief areas in the new terminal. Williams reported that pet relief areas are in the design, including an indoor area.

Gallivan wondered if there is concern about the owner's reserve budget. Williams stated that while it will need to be managed carefully, some contingency is built into each CGMP for unforeseen items. Significant scope changes are paid by outside funding sources if the owner's reserve is insufficient.

Mayor Biskupski asked about planned upgrades for women who are breastfeeding. Williams indicated that each bank of restrooms will include separate lactation rooms in addition to men's, women's, and companion facilities. Wyatt added that the Airport is working now to create proper lactation rooms by redesigning space within our existing terminals.

Gochmour requested careful and thoughtful design regarding roadways and signage for drivers during construction. Williams acknowledged the importance of this, noting that new overhead signage will be coming soon near the convenience store.

D. Year-End Financial Audit

Ryan Tesch, Director of Finance, presented the FY2017 Year-End Audit Financial Report to the Board (presentation on file). Main points included were:

- FY2017 Financial and operational highlights
- Total passenger traffic
- Costs per enplaned passenger
- Budget comparison
- Airline Use Agreement rates and charges
- Comparison of actual operating revenues

- Airline and non-airline revenues
- Comparison of concession revenue
- Gross sales per enplaned passenger
- Comparison of actual operating expenses
- Sources and uses of funds for the Series 2017 Bonds

Ryan introduced Paul Skeen, audit partner at Eide Bailly, LLP. Skeen reported no findings, no uncorrected misstatements or errors and no disagreements with management for the Airport's Comprehensive Annual Financial Report. Eide Bailly designed new approaches to this year's audit, paying special attention to the expansion.

Karen Mayne left the meeting at 9:31 a.m.

Mayor Biskupski and Larry Pinnock recognized Best-Devereux, Gallivan and Gochnour, who have completed their terms on the Board, and thanked them for their contributions.

Mayor Biskupski left the meeting at 9:43 a.m.

E. Election of Board Chair and Vice-Chair

Pinnock called for a vote by acclamation on the nomination of Larry Pinnock as Airport Advisory Board Chair and for Cynthia Miller as Vice Chair of the Airport Advisory Board for 2018. All votes were affirmative.

The Board Chair for 2018 is Larry Pinnock and the Vice-Chair is Cynthia Miller.

The next Board meeting will be held on February 21, 2018.

Larry Pinnock adjourned the meeting at 9:44 a.m.

Larry Pinnock, Chair

Date

Jacqueline M. Biskupski, Mayor

Date

DEPARTMENT OF AIRPORTS
BOARD MEETING

21 February 2018

DISCUSSION ITEMS

SALT LAKE CITY AIRPORT BOARD

AGENDA: DISCUSSION ITEM (B)
DATE: 21 February 2018
TO: Airport Board
FROM: Bill Wyatt, Executive Director
SUBJECT: **Executive Director's Report**

Bill Wyatt will present a monthly informational report to the Board, may include:

1. ARP progress
2. Ground transportation update
3. Concessions and rental cars
4. Airport safety and security
5. Airport facilities and operations
6. General aviation
7. Passenger and airport users
8. Environmental matters
9. Financial condition
10. Legislative issues
11. Airlines
12. Communications and marketing

SALT LAKE CITY AIRPORT BOARD

AGENDA: DISCUSSION ITEM (C)
DATE: 21 February 2018
TO: Airport Board
FROM: Bill Wyatt, Executive Director
SUBJECT: **Airport Redevelopment Program Update**

Mike Williams, Airport Redevelopment Program (ARP) Director, will present an update on the SLC Airport Redevelopment Program (presentation on file).

Airport Redevelopment Program

Status Update: 2-21-2018



Salt Lake City International Airport



CGMP# 4 – Landside and Airside Enabling

Project: CGMP# 4 - Landside and Airside Enabling

Budget: \$81.09M

EAC: \$77.42M

Terminal/South Concourse West/Gateway/Roadways/Airside and Landside Enabling and Central Utility Plant Hydronic Piping


		Current Status
Schedule		Recent Milestones Achieved
Activity	Target Date	
Complete Seq 2 Tunnel Excavation	Dec 2016 A	* Mid-Concourse Tunnel Tie-in Lids Concrete Pour completed.
Complete SCW Surcharge	Dec 2016 A	
Complete West Lift Station Pumps	Mar 2017 A	* Mid-Concourse Tunnel Tie-in waterproofing underway.
Complete SCW Ductbank	Mar 2017 A	* Close-out Process Underway
Complete Gateway Hydronic Piping	May 2017 A	
Substantial Completion	Apr 2017	* Final CGMP Close-out Dependent on Mid-Concourse Tunnel Construction Completion
Concerns/Issues/Risks		
* None at this time		



CGMP# 5 – Terminal/South Concourse West/Gateway

Project: CGMP# 5 - Terminal/Gateway/South Concourse West Budget: \$788.35M EAC: \$788.35M

Terminal/Gateway/South Concourse West - Foundations, Structure, Building Envelope and Build-out

		Current Status
Schedule		Recent Milestones Achieved
Activity	Target Date	
Complete Terminal Foundations	Feb 2018	* Terminal Structural Steel Erection Continues.
Complete Terminal Structural Stl	Jul 2018	* Terminal Elevated Deck Concrete Pours underway and on schedule.
Complete SCW Temporary Dry-in	Sep 2018	* Terminal Plaza Curtainwall Framing underway.
Term Mech Rms Ready for Equip	Nov 2018	* SCW Moving Walk installation started.
SCW Mech Rms Ready for Equip	Dec 2018	* SCW Node Metal Panel Installation continues.
Gateway Structure Complete	Apr 2019	* Continuing Curtainwall Glass and Clerestory Glass.
Concerns/Issues/Risks		
* Structural Steel Fabrication progress.		



CGMP# 6 – Roadways/Parking Garage/Central Utility Plant

Project: CGMP# 6 - Parking Garage/Roadways/Central Utility Plant/Project-Wide Special Systems

Budget: \$363.86M EAC: \$363.86M

Parking Garage/Rental Car Ready Return/Elevated and At-Grade Roadways/Central Utility Plant/Project-Wide IT and Special Systems

Current Status

Schedule

Recent Milestones Achieved

Activity	Target Date
Complete CUP Chiller Installation	Dec 2017 A
CUP Dry-in	Mar 2018 A
CUP Permanent Power available	Mar 2018
Deliver Elevated Roadway Girders	Mar 2018
CUP Operational	May 2018
Parking Garage Roofing Complete	Aug 2019

* Parking Garage Level 2, 3 and 4 Soffolding and Concrete Proceeding.

* Roadways Bent Cap Forming and Concrete Continues.

* CUP Roofing Complete.

* CUP Cooling Towers installed.

* CUP Equipment installation on schedule.

Concerns/Issues/Risks

* None at this time.



CGMP# 7 – Baggage Handling System

Project: CGMP# 7 - Baggage Handling System including TSA Screening Area

Budget: \$86.09M EAC: \$86.09M

Terminal/Gateway/South Concourse West and TSA Screening Area Complete Baggage Handling System IT and Special Systems

Current Status

Schedule

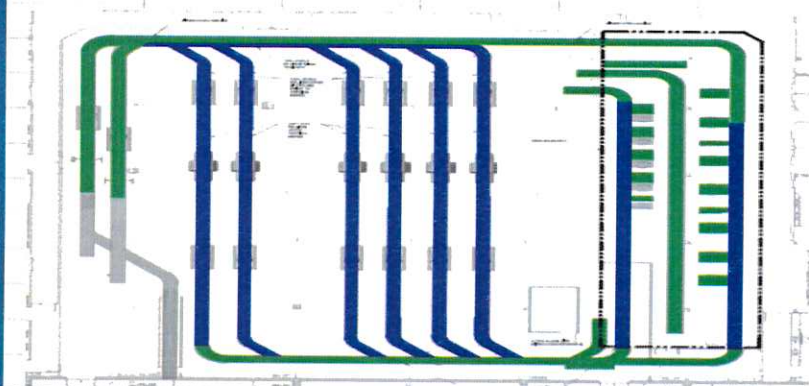
Recent Milestones Achieved

Activity	Target Date
Issue NTP	Sep 2016 A
Start BHS Hanger Installation	Aug 2017 A
Install TSA Provided Equipment	Jun 2019
Start BHS Testing and Commission	Nov 2019
Start TSA BHS Acceptance Testing	Mar 2020
BHS Substantial Completion	May 2020

- * BIM Coordination Sessions with MEP continue.
- * BHS SCW Conveyor Installation Underway.
- * BHS Conveyor Fabrication Continues.
- * BHS Terminal Tunnel Conveyor Installation Continues.

Concerns/Issues/Risks

- * None at this time.



CGMP# 9 – Apron Paving – Taxilane 20/21

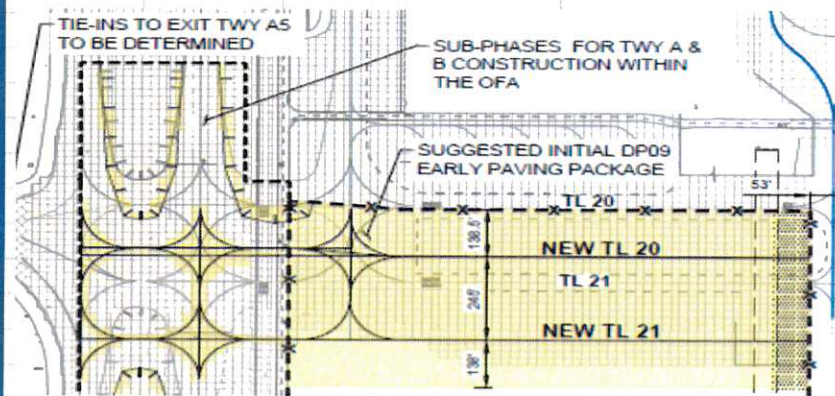
Project: CGMP# 9 - Apron Paving - Taxilane 20/21 and Taxiway A/B

Budget: \$26.76M **EAC:** \$24.35M

Initial Portion of Apron Paving that will Utilize \$10 million in AIP Funding and also Support Fence Installation for North Concourse Site.

		Current Status
Schedule		Recent Milestones Achieved
Activity	Target Date	
Issue NTP	April 2017 A	* CGMP# 9 Substantial Completion Documentation Submitted for Review.
Taxiway 'B' Reopens	Sep 2017 A	
Taxilane 21 Reopens	Dec 2017 A	
Taxiway 'A' Complete	Nov 2017 A	
CGMP# 9 Bulletin# 1 Close-out	Mar 2018	
Concerns/Issues/Risks		
* None at this time.		

The diagram illustrates the construction phases for Taxiway A and Taxiway B. It shows the layout of Taxiway A (TL 20) and Taxiway B (TL 21), including their tie-ins to Exit TWY A5. The drawing highlights the 'SUGGESTED INITIAL DP09 EARLY PAVING PACKAGE' and the 'SUB-PHASES FOR TWY A & B CONSTRUCTION WITHIN THE OFA'. Dimensions are provided for the taxiway widths: 130.6' for TL 20, 240' for TL 21, and 138' for the adjacent area. The drawing also shows the 'TIE-INS TO EXIT TWY A5 TO BE DETERMINED' and the 'NEW TL 20', 'TL 21', and 'NEW TL 21' sections.



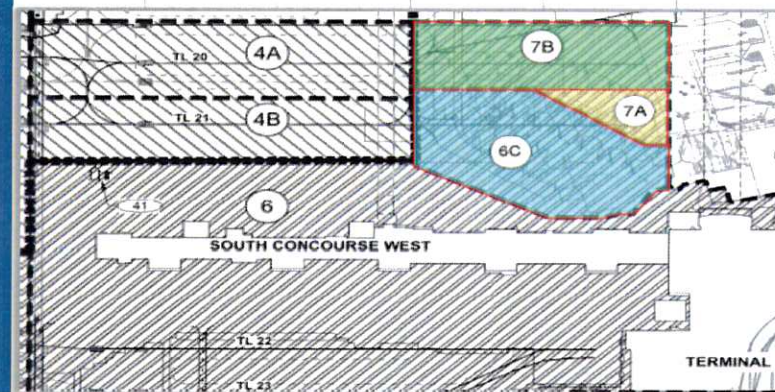
CGMP# 9A – SCW Apron Paving and Hydrant Fueling

Project: CGMP# 9A - SCW Apron Paving and Hydrant Fueling

Budget: \$76.14M EAC: \$76.14M

Apron Paving and Hydrant Fueling that will Support SCW Opening Day.

Schedule		Current Status
Activity	Target Date	Recent Milestones Achieved
Issue NTP	Dec 2017 A	<p>* CGMP# 9A for SCW Apron Paving and Hydrant Fueling Executed on 12/21/2017.</p> <p>* CGMP# 9A Trade Contractors Notice to Proceed Issued.</p>
Construction Start - Fueling	Jan 2018	
Construction Start - Paving	Apr 2018	
Taxiway 'B' Phase 6A Complete	Jul 2018	
Taxiway 'B' Phase 6B Complete	Oct 2018	
Taxiway 'B' Phase 6 Complete	Jul 2020	
Concerns/Issues/Risks		
* None at this time.		



CGMP# 15 – NCP Enabling Phase 1

Project: CGMP# 15 - NCP Phase 1 Enabling

Budget: \$28.2M EAC: \$28.2M

North Concourse Phase 1 Enabling Construction including Ground Improvement and Driven Piles.

Current Status

Schedule

Recent Milestones Achieved

Activity	Target Date
Start Enabling Construction	Jan 2018 A
Start Driven Piles	Jun 2018
Complete Stone Columns	Jul 2018
Complete Driven Piles	Aug 2018
Start Outer Ramp Sitework	Aug 2018
Substantial Completion	Aug 2018

- * Captured the North Concourse Site
- * Initiated Gate 48 Landside Access Construction
- * Removed Gates D10 and D12 from Operations.
- * Mobilized Pavement Demolition Equipment.
- * Issued Stone Column Diferred Submittal for Review.

Concerns/Issues/Risks

- * Trade Contractor Capacity to Bid.



Project Statistics

Safety Statistics Through 2/09/2018	TRP/NCP Trade Staffing 2/09/2018
43 Days without a Lost Time Injury	1,055 Trade Workers on Site
2,048,895 Hours Worked to Date	

Contract Local/Non-Local Awarded Statistics

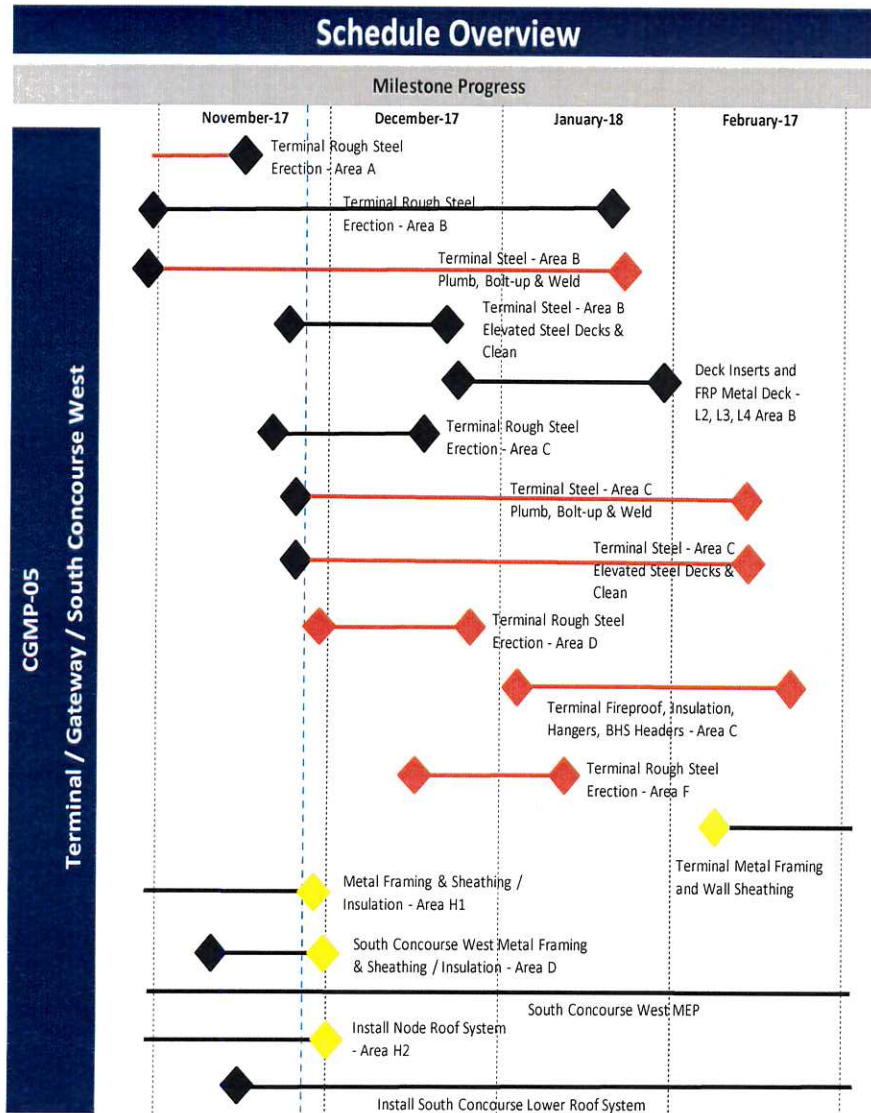
Local Trades	Dollar Value	Trade Count	Percentage
Total Local (Wasatch Front) Contractors	\$750,562,831	71	67%
Total Out of State Contractors	\$377,144,995	16	33%
Total Contract Awards	\$1,127,707,826	87	100%

Contract Union/Merit Shop Awarded Statistics

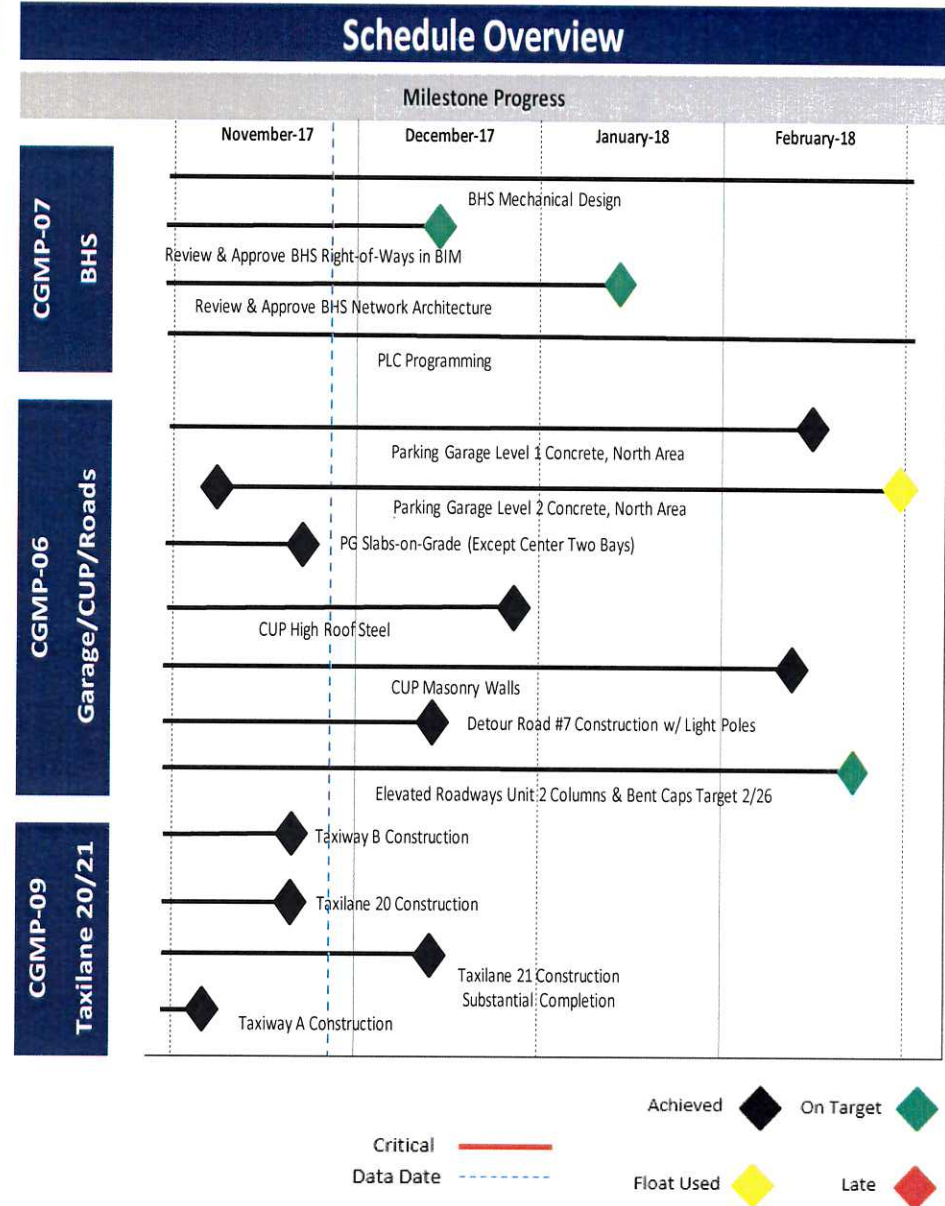
Union Trades	Dollar Value	Trade Count	Percentage
Total Union Contractors	\$369,591,438	20	33%
Total Merit Shop Contractors	\$758,116,388	67	67%
Total Contract Awards	\$1,127,707,826	87	100%



Near Term Schedule



This month's schedule is based on January 2018 update. Overall the program continues to maintain progress but is running slightly behind the baseline schedule.



Salt Lake City International Airport

10



Overall Airport Redevelopment Program Tracking Budget

January 2018	Budget	Spent	Committed	Uncommitted	EAC
CGMP 01 - HDJV Preconstruction Services	\$ 9,575,407	\$ 9,575,407	\$ 9,575,407	\$ -	\$ 9,575,407
CGMP 02 - HDJV General Conditions Services	\$ 105,983,964	\$ 38,500,276	\$ 79,712,754	\$ 26,271,210	\$ 105,983,964
CGMP 03 - QTA/RSS Site Work, Utilities, Civil Enabling Ph 1	\$ 88,721,327	\$ 88,721,327	\$ 88,721,327	\$ -	\$ 88,721,327
CGMP 04 - Landside/Airside Enabling	\$ 81,096,442	\$ 74,813,718	\$ 81,096,442	\$ -	\$ 81,096,442
CGMP 05 - Terminal/SCW/Gateway	\$ 788,346,442	\$ 228,528,453	\$ 788,346,442	\$ -	\$ 788,346,442
CGMP 06 - Parking Garage, Roadways, CUP	\$ 363,855,782	\$ 86,620,278	\$ 363,855,782	\$ -	\$ 363,855,782
CGMP 07 - TRP Baggage Handling System	\$ 87,585,765	\$ 11,544,130	\$ 86,085,766	\$ 1,499,999	\$ 87,585,765
CGMP 09 - Taxilanes 20&21/Taxiways A&B	\$ 26,761,610	\$ 22,044,637	\$ 26,761,610	\$ -	\$ 26,761,610
CGMP 09A - Apron Paving & Fueling/SCW	\$ 76,135,399		\$ 76,135,399	\$ -	\$ 76,135,399
CGMP 10 - South Concourse East (SCE)	\$ 395,174,615			\$ 395,174,615	\$ 395,174,615
CGMP 11 - Apron Paving & Fueling SCE	\$ 201,388,791			\$ 201,388,791	\$ 201,388,791
CGMP 12 - Existing Structure Demolition	\$ 20,788,411			\$ 20,788,411	\$ 20,788,411
CGMP 13 - AOJV Preconstruction Services	\$ 15,483,607	\$ 4,484,038	\$ 11,899,449	\$ 3,584,158	\$ 15,483,607
CGMP 14 - AOJV General Conditions Ph 1	\$ 87,131,130		\$ 46,798,489	\$ 40,332,641	\$ 87,131,130
CGMP 15 - NCP Enabling Ph 1	\$ 28,222,187		\$ 28,222,187	\$ -	\$ 28,222,187
CGMP 16 - North Concourse Ph 1 & Mid-Concourse Tunnel	\$ 297,192,031			\$ 297,192,031	\$ 297,192,031
CGMP 17 - NCP Baggage Handling System	\$ 56,071,065			\$ 56,071,065	\$ 56,071,065
CGMP 18 - NCP Apron Paving & Fueling Ph 1	\$ 83,323,433			\$ 83,323,433	\$ 83,323,433
CGMP 19 - North Concourse Ph 2 & Central Tunnel	\$ 212,535,351			\$ 212,535,351	\$ 212,535,351
CGMP 20 - NCP Apron Paving & Fueling Ph 2	\$ 42,110,130			\$ 42,110,130	\$ 42,110,130
CGMP 21 - NCP FF&E/Furniture	\$ 4,121,026			\$ 4,121,026	\$ 4,121,026
Total Program Construction	\$ 3,071,603,915	\$ 564,832,264	\$ 1,687,211,054	\$ 1,384,392,861	\$ 3,071,603,915
TRP Soft Cost	\$ 271,316,222	\$ 155,463,580	\$ 191,116,910	\$ 80,199,312	\$ 271,316,222
NCP Soft Cost	\$ 153,950,554	\$ 19,474,869	\$ 37,718,743	\$ 116,231,811	\$ 153,950,554
Total Program Soft Cost	\$ 425,266,776	\$ 174,938,449	\$ 228,835,653	\$ 196,431,123	\$ 425,266,776
Terminal Redevelopment Program (TRP) Owner Reserve	\$ 38,482,957			\$ 38,482,957	\$ 38,482,957
North Concourse Program (NCP) Owner Reserve	\$ 40,617,352			\$ 40,617,352	\$ 40,617,352
Total Program Owner Reserve	\$ 79,100,309	\$ -	\$ -	\$ 79,100,309	\$ 79,100,309
Total Airport Redevelopment Program	\$ 3,575,971,000	\$ 739,770,713	\$ 1,916,046,707	\$ 1,659,924,293	\$ 3,575,971,000



Job Progress Photos – Terminal Building



Terminal Canyon looking south



Baggage Tunnel walls (first paint in building)



Terminal steel erection continues southward



Job Progress Photos – South Concourse West



First moving walkway hoisted into place in SCW



Metal panel installation at the SCW nodes



North Façade window wall installation on SCW



Lid pour on the Mid-Concourse Tunnel



Job Progress Photos – Parking Garage, Roadways, CUP



Formwork for Parking Garage Level 4



Central Utility Plant progress



Completion of first Elevated Roadway bent



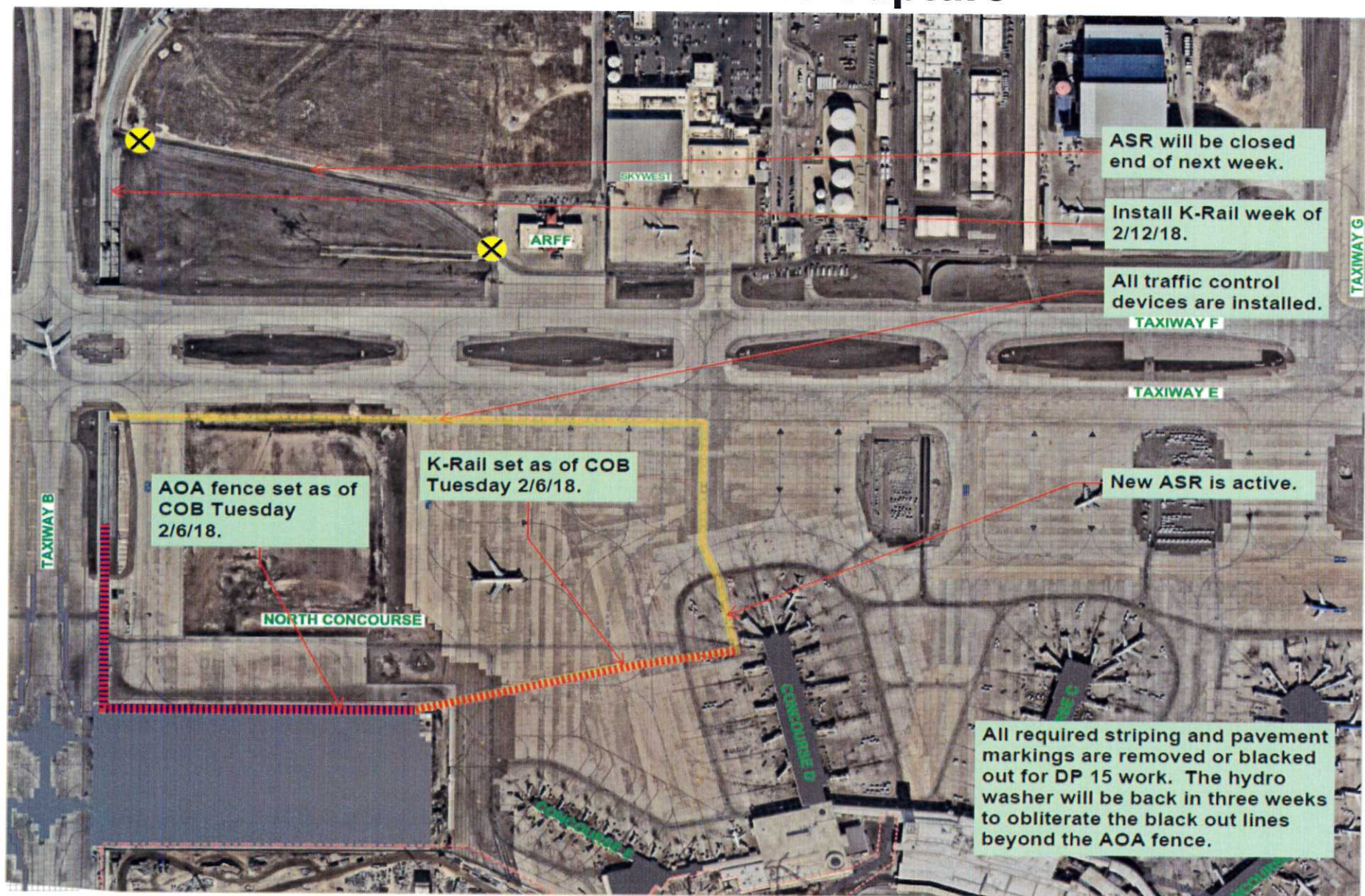
Job Progress Aerial



SLC Airport Redevelopment Program



North Concourse Construction Site Capture



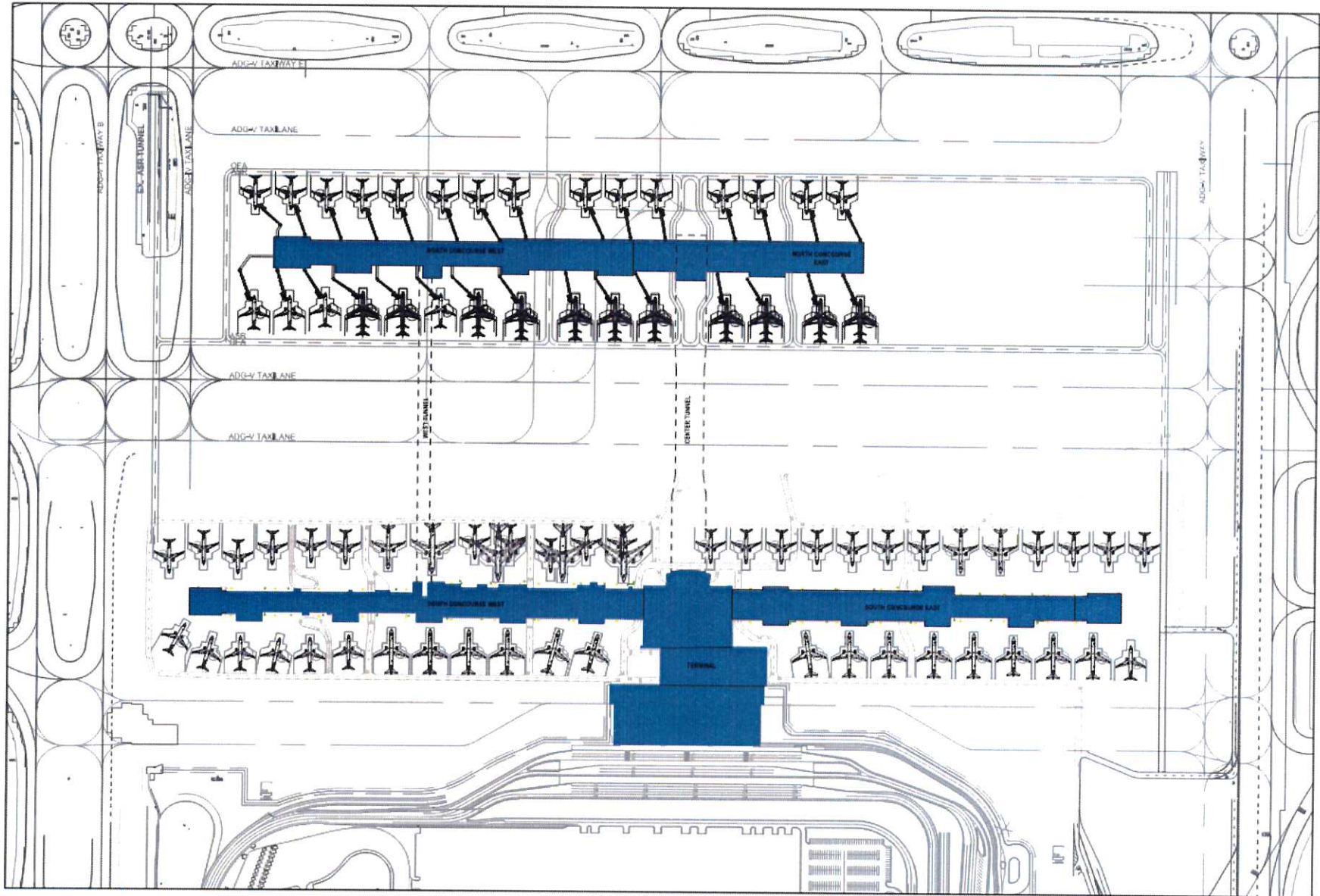
North Concourse Construction Relocated ASR at D10/D12



North Concourse Construction Operational & Staging Area (OSA)



Current Program Final Phase Completed



SALT LAKE CITY AIRPORT BOARD

AGENDA: DISCUSSION ITEM (D)
DATE: 21 February 2018
TO: Airport Board
FROM: Bill Wyatt, Executive Director
SUBJECT: **Northwest Quadrant (NWQ) Master Plan**

Lara Fritts, Director of the Salt Lake City Department of Economic Development, will present an overview of the Northwest Quadrant Master Plan (presentation on file).



NWQSLC

**ECONOMIC
DEVELOPMENT
UPDATE**

NORTHWEST QUADRANT CROSSROADS OF THE WEST



BUSINESS
DEVELOPMENT



SLCRDA

TIMELINE: PART 1

Vision

JULY 2016 - MARCH 2017



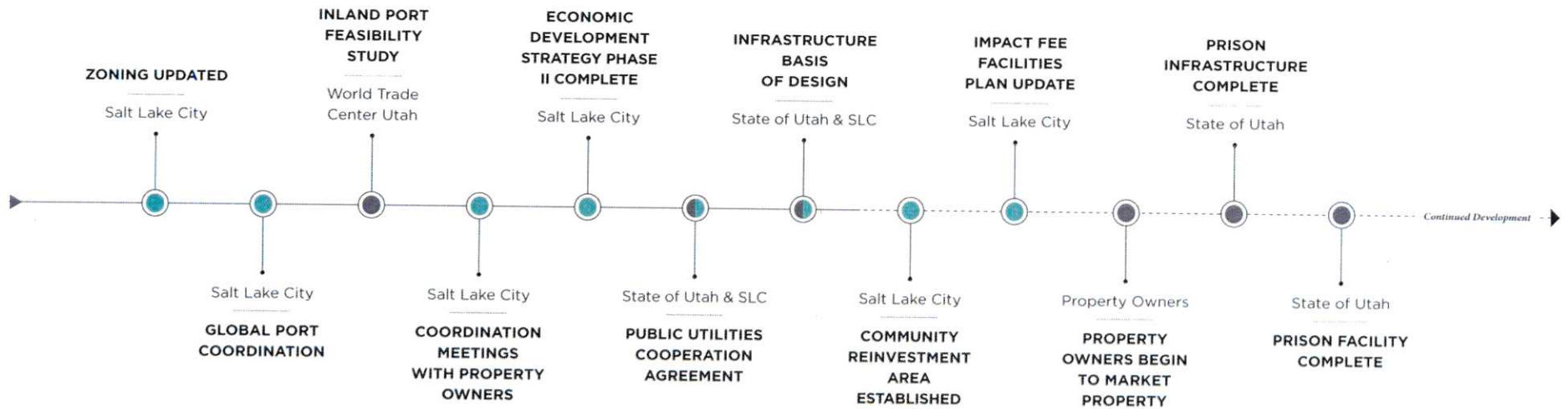
TIMELINE: PART 2

Strategy

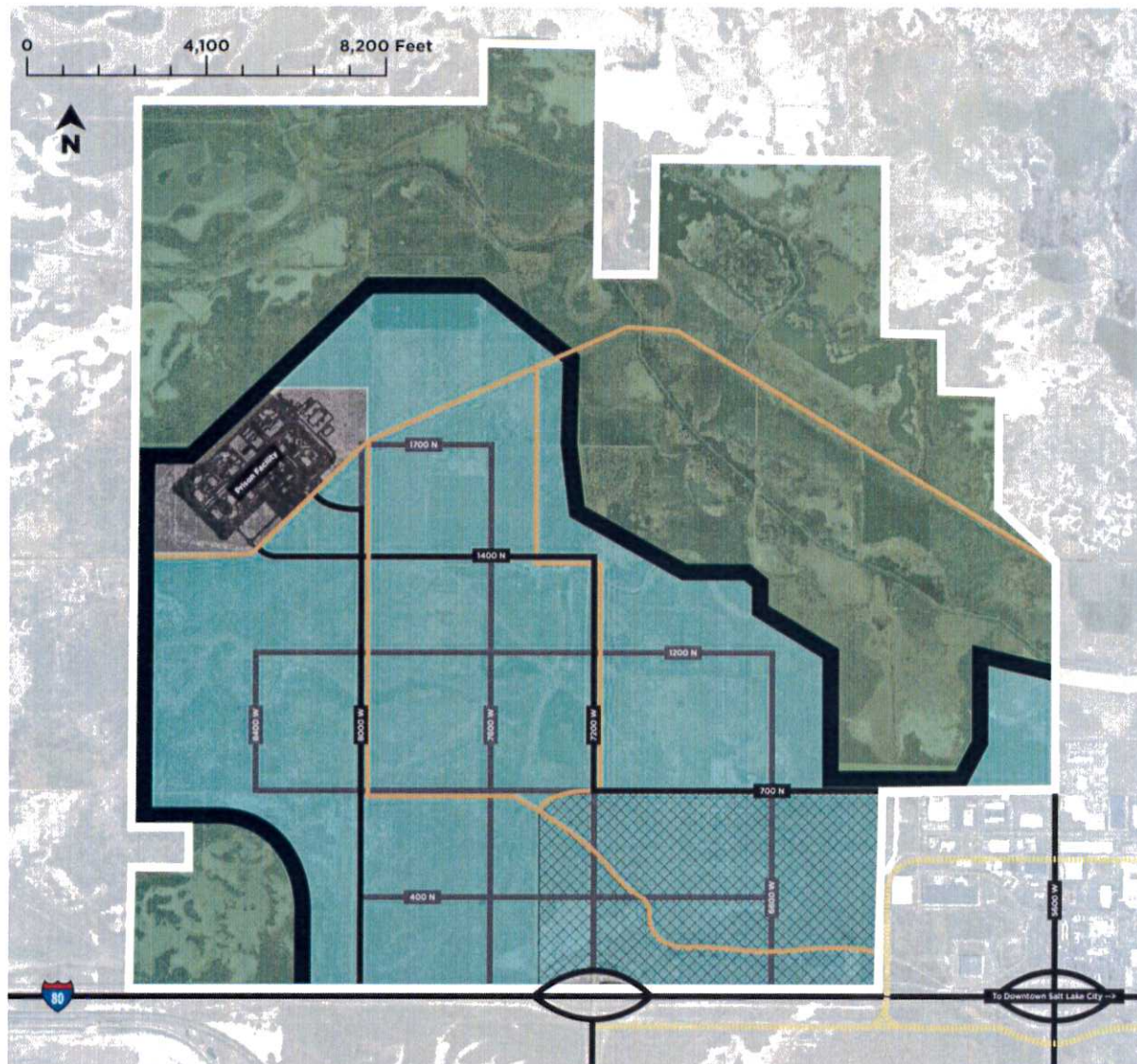
APRIL 2017 - DECEMBER 2017

Implementation

JANUARY 2018 ---->



DEVELOPMENT FRAMEWORK



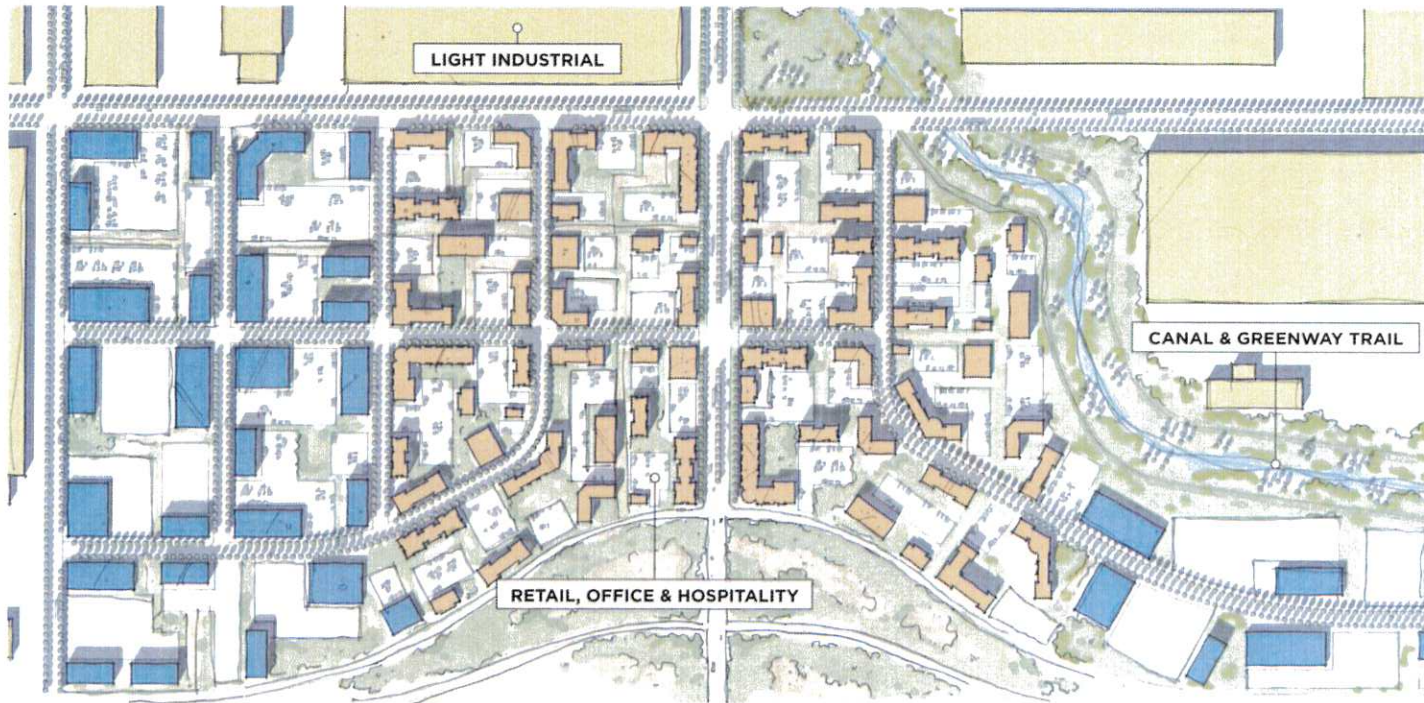
Map Legend

- Development Buffer
- Development Area
- Landfill Area (closed)
- Natural Area
- Planned Streets
- Conceptual Streets
- Existing Railroad
- Canal



FUTURE LAND USES

Conceptual Gateway Area at 7200 West & I-80



The conceptual land use plan identifies the potential for 150 million sq. ft. of development, across the following land use categories: light industrial, flex office, retail, and hotel.



LAND USE DEVELOPMENT ESTIMATES

Potential for Development

LAND USE	BUILDING (SQ FT)
Light Industrial (Sq Ft)	40,192,991
Retail (Sq Ft)	619,620
Hotel (Rooms)	832
Flex Office (Sq Ft)	12,557,549

Developable land in the NWQ focus area is estimated to be **3,400 acres**, which is **larger than the entire land area of Holladay, Utah.**

The potential for development in the NWQ, at almost **54,000,000 sq. ft.**, is more than double the square footage of Utah County's industrial inventory.

Six mega site developments could potentially fit in the NWQ's developable area.

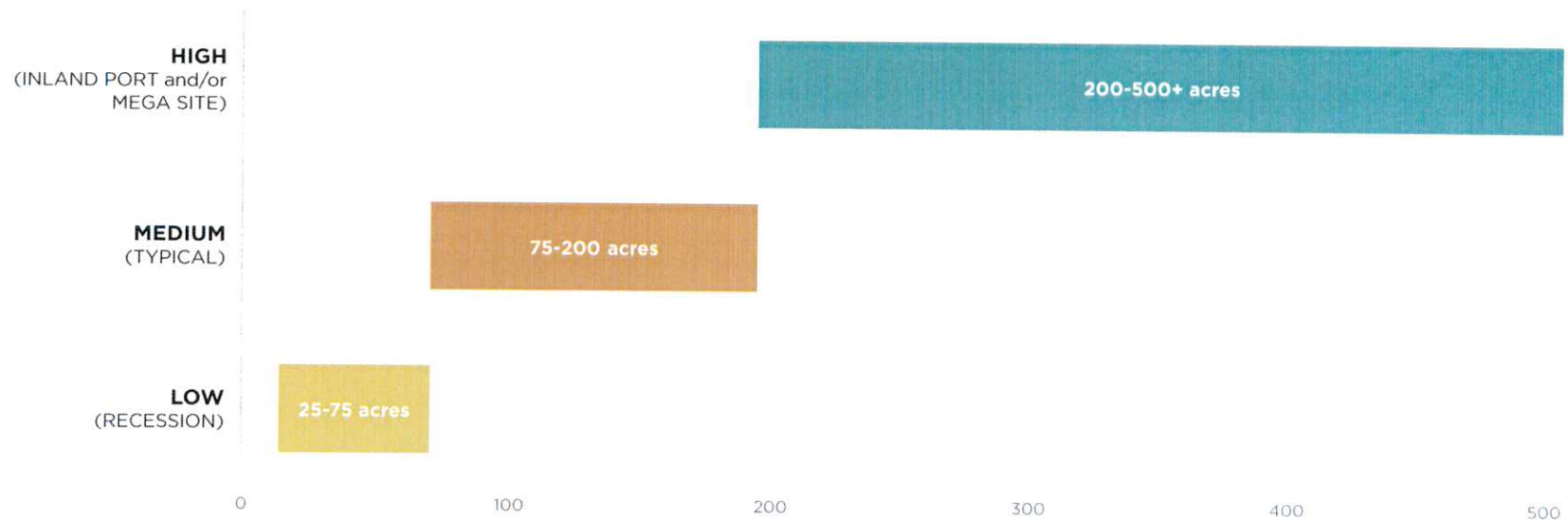
Source: Jones Lang LaSalle

Note: Development calculations are estimates. Actual development totals will depend on the finalized master drainage plan, street network, rail network, and other land use features. In addition, development totals will vary as development is implemented on a site-by-site basis through variations in floor area ratio.



INDUSTRIAL MARKET

Projected Annual Industrial Absorption



Salt Lake Valley's growing scarcity of developable land means that the NWQ can be the future of development for many years to come. There is strong demand from an expanding manufacturing and distribution center market that will continue to fuel growth.

Source: Jones Lang LaSalle



ECONOMIC IMPACT

Estimated Economic Impacts: 41-year Period

BASILINE ABSORPTION	TOTAL TAX REVENUE	NVP
Property Tax	\$2,543,325,000	\$499,815,000
Sales Tax	\$423,243,000	\$74,628,000
Transient Room Tax	\$64,182,000	\$11,317,000
Total	\$3,030,750,000	\$585,759,000

BASILINE ABSORPTION

Assumes a typical absorption scenario resulting in a full build-out by Year 40.

HIGH ABSORPTION	TOTAL TAX REVENUE	NVP
Property Tax	\$3,416,577,000	\$771,681,000
Sales Tax	\$527,244,000	\$118,809,000
Transient Room Tax	\$79,952,000	\$18,016,000
Total	\$4,023,774,000	\$908,507,000

HIGH ABSORPTION

Assumes an inland port and/or megasites scenario resulting in full build-out by Year 20.

Source: Jones Lang LaSalle

Note: Absorption may escalate as infrastructure is developed. However, the two scenarios assume an annual average absorption over the entire development period. Absorption may be lower in the beginning years of development.



FINANCIAL TOOLS

Salt Lake City has a number of ways it is actively supporting Northwest Quadrant economic development:



RDA Loan Program



Foreign Trade Zone



*Economic Development
Loan Fund*



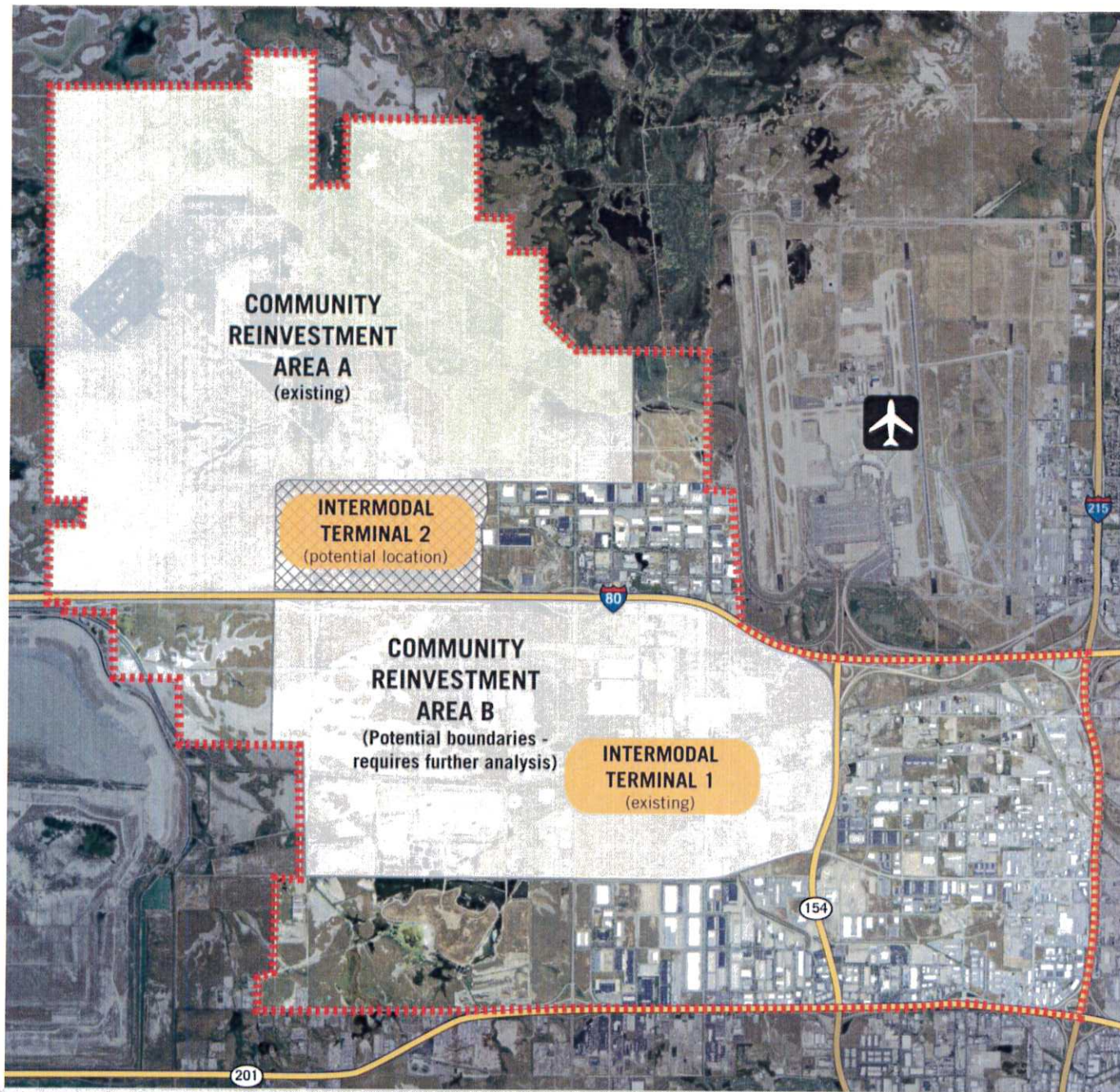
Impact Fees



Tax Increment Financing



ECONOMIC TARGET AREAS



DEPARTMENT OF AIRPORTS
BOARD MEETING

21 February 2018

INFORMATIONAL ITEMS

SALT LAKE CITY DEPARTMENT OF AIRPORTS**(An Enterprise Fund of Salt Lake City Corporation)****Statements of Net Position****(Amounts in Thousands)**

<i>As of December 31,</i>	2017	2016
ASSETS		
Current Assets		
Cash and cash equivalents	\$ 227,962	\$ 138,416
Restricted cash and cash equivalents	51,586	-
Investments	11,526	-
Airline and rental fees receivable	18,747	14,646
Other assets	4,360	4,637
Total current assets	314,181	157,699
Noncurrent Assets		
Restricted cash and cash equivalents	853,594	162,834
Restricted investments	40,512	-
Investments	33,138	44,951
Other assets	2,000	3,793
Total noncurrent assets and investments	929,244	211,577
Capital assets		
Land	104,590	99,347
Building and improvements	1,369,273	1,278,012
Equipment	141,313	140,191
Construction in progress	613,078	314,822
Total capital assets - at cost	2,228,254	1,832,372
Less accumulated depreciation	955,616	900,116
Net capital assets	1,272,638	932,256
Total noncurrent assets	2,201,882	1,143,833
Total Assets	2,516,063	1,301,532
Deferred Outflows of Resources	11,948	10,181
Total Assets and Deferred Outflows of Resources	\$ 2,528,014	\$ 1,311,714

SALT LAKE CITY DEPARTMENT OF AIRPORTS**(An Enterprise Fund of Salt Lake City Corporation)****Statements of Net Position****(Amounts in Thousands)**

<i>As of December 31,</i>	2017	2016
LIABILITIES		
Current Liabilities		
Accounts payable	\$ 4,177	\$ 7,784
Accrued compensation	1,044	924
Interest payable	25,000	-
Other accrued liabilities	5,266	8,521
Total current liabilities	35,487	17,229
Noncurrent Liabilities		
Revenue bonds payable	1,122,934	-
Noncurrent compensation liability	3,790	3,629
Net pension liability	27,424	25,465
Other accrued liabilities	15,456	4,070
Total noncurrent liabilities	1,169,604	33,164
Total Liabilities	1,205,091	50,393
Deferred Inflows of Resources	6,973	2,253
NET POSITION		
Net investment in capital assets	831,118	932,257
Restricted for		
Capital projects	73,534	165,422
Debt service	190,746	-
Unrestricted	220,552	161,389
Net Position	1,315,950	1,259,068
Total Liabilities, Deferred Inflows of Resources, and Net Position	\$ 2,528,014	\$ 1,311,714

SALT LAKE CITY DEPARTMENT OF AIRPORTS

(An Enterprise fund of Salt Lake City Corporation)

Statements of Revenues, Expenses, and Changes in Fund Net Position

(Amounts in Thousands)

<i>for the six month period ended December,</i>	2017	2016
Operating Revenues		
Airline revenue	\$ 36,918	\$ 34,400
Terminal concessions	9,237	8,876
Landside concessions	33,379	30,761
Lease revenue	2,951	2,708
General aviation	1,323	1,320
State aviation tax	1,568	1,544
Other revenue	3,348	2,418
Operating revenues	88,725	82,028
Less airline revenue sharing	(6,457)	(5,914)
Total operating revenues	82,267	76,114
Operating Expenses		
Salaries and benefits	25,426	24,258
Materials and supplies	4,655	4,087
Maintenance contracts	4,447	4,208
Charges and services	4,688	4,253
Utilities	3,312	3,348
Inter-governmental	3,362	2,724
Other expense	1,910	1,955
Total operating expenses before depreciation	47,800	44,833
Operating Income Before Depreciation	34,468	31,280
Depreciation Expense	32,332	32,697
Operating Income/(Loss)	2,135	(1,417)
Non-Operating Revenues (Expenses)		
Passenger facility charges	23,592	22,243
Customer facility charges	7,365	7,960
Interest income	8,975	1,126
Interest expense	(23,122)	-
Gain on disposition of property and equipment	65	45
Net non-operating income	16,874	31,373
Capital Contributions		
Contributions and grants, principally Airport Improvement Program	9,131	6,876
Total capital contributions	9,131	6,876
Net Position		
Increase in net position	28,140	36,833
Net Position, beginning of period	1,287,808	1,222,235
Net Position, end of period	\$ 1,315,950	\$ 1,259,068

SALT LAKE CITY DEPARTMENT OF AIRPORTS

(An Enterprise fund of Salt Lake City Corporation)

OPERATING REVENUES AND EXPENDITURES TO BUDGET (Unaudited)

(Amounts in thousands)

	JUL - DEC 2017 ACTUALS	JUL - DEC 2017 BUDGET	SURPLUS/ DEFICIT	PERCENT CHANGE
Revenues				
Landing Fees	\$ 16,193	\$ 16,180	\$ 13	0.1%
Fuel Farm	268	264	4	1.4%
Aircraft Remain Overnight Fees	148	142	6	4.0%
Cargo Bldg. & Ramp Use Fee	792	808	(16)	-2.0%
Security Charges to TSA	563	162	401	247.3%
Extraordinary Service Charges	43	51	(8)	-15.4%
Passenger Boarding Bridges	839	877	(38)	-4.4%
Tenant Telephone Fees	155	164	(9)	-5.7%
Terminal Rents	17,404	16,952	452	2.7%
General Aviation Hangars	614	583	31	5.3%
FBO Hangars/Fuel Oil Royalty	180	153	27	17.9%
Flight Kitchens	927	858	69	8.1%
Other Buildings & Office Space	2,698	2,672	26	1.0%
Food Service & Vending	5,585	5,520	65	1.2%
News/Gift Shop	3,174	2,945	229	7.8%
Car Rental	14,544	12,365	2,179	17.6%
Leased Site Areas	1,207	1,129	78	6.9%
Auto Parking/Ground Transportation	18,812	17,643	1,169	6.6%
Advertising	477	616	(139)	-22.6%
State Aviation Fuel Tax	1,568	1,500	68	4.5%
Military	77	77	0	0.1%
Glycol Recycling Sales	187	112	75	66.7%
ARFF Training	373	416	(43)	-10.3%
Auxiliary Airport Fuel Sales	530	467	63	13.6%
Other	1,367	899	468	52.1%
Less: Airline Revenue Sharing	(6,457)	(6,093)	(364)	5.97%
Total Operating Revenues	82,267	77,463	4,806	6.2%
Expenses				
Salary & Wages	17,745	17,572	(173)	-1.0%
Employee Benefits	8,265	8,733	468	5.4%
Maintenance Supplies	2,643	4,448	1,805	40.6%
Automotive Supplies	1,328	1,503	175	11.6%
Other Supplies	684	1,082	398	36.8%
Insurance Premiums	1,338	1,092	(246)	-22.5%
Janitorial Service	3,602	3,634	32	0.9%
Maintenance Contracts	845	1,012	167	16.5%
Other Contractual Services	3,451	3,645	194	5.3%
Professional & Tech Service	1,237	2,476	1,237	50.0%
Utilities	3,312	4,149	837	20.2%
Administrative Service Fee	826	750	(76)	-10.2%
Aircraft Rescue Fire Fighting	2,536	2,274	(262)	-11.5%
Other Expenses	572	1,389	817	58.8%
Operating Expenses Before Capitalized Salaries	48,384	53,757	5,374	10.0%
Capitalized Salaries	585	585	-	0.0%
Total Operating Expenses	47,800	53,172	5,373	10.1%
Operating Income	\$ 34,468	\$ 24,290	\$ 10,178	41.9%

SALT LAKE CITY DEPARTMENT OF AIRPORTS

(An Enterprise fund of Salt Lake City Corporation)

OPERATING REVENUES AND EXPENDITURES TO PRIOR YEAR (Unaudited)

(Amounts in thousands)

	JUL - DEC 2017	JUL - DEC 2016	SURPLUS/ (DEFICIT)	PERCENT CHANGE
Revenues				
Landing Fees	\$ 16,193	\$ 14,999	\$ 1,193	8.0%
Fuel Farm	268	264	4	1.4%
Aircraft Remain Overnight Fees	148	173	(25)	-14.7%
Cargo Bldg. & Ramp Use Fee	792	807	(15)	-1.9%
Security Charges to TSA	563	160	402	250.5%
Extraordinary Service Charges	43	39	4	11.0%
Passenger Boarding Bridges	839	818	21	2.6%
Tenant Telephone Fees	155	159	(4)	-2.4%
Terminal Rents	17,404	15,974	1,430	9.0%
General Aviation Hangars	614	671	(57)	-8.5%
FBO Hangars/Fuel Oil Royalty	180	168	12	7.4%
Flight Kitchens	927	862	66	7.6%
Other Buildings & Office Space	2,698	2,707	(9)	-0.3%
Food Service & Vending	5,585	5,319	266	5.0%
News/Gift Shops	3,174	2,940	234	8.0%
Car Rental	14,544	12,905	1,639	12.7%
Leased Site Areas	1,207	1,087	120	11.0%
Auto Parking/Ground Transportation	18,812	17,830	983	5.5%
Advertising	477	617	(139)	-22.6%
State Aviation Fuel Tax	1,568	1,544	24	1.5%
Military	77	38	38	100.0%
Glycol Recycling Sales	187	192	(5)	-2.8%
ARFF Training	373	351	22	6.4%
Auxiliary Airport Fuel Sales	530	-	530	100.0%
Other	1,367	1,404.11	(37)	-2.6%
Less: Airline Revenue Sharing	(6,457)	(5,914)	(543)	0.0%
Operating Revenues	82,267	76,114	6,154	8.1%
Expenses				
Salary & Wages	\$ 17,745	16,758	987	5.9%
Employee Benefits	8,265	8,060	206	2.6%
Maintenance Supplies	2,643	2,317	326	14.1%
Automotive Supplies	1,328	1,107	221	19.9%
Other Supplies	684	663	21	3.2%
Insurance Premiums	1,338	1,301	37	2.8%
Janitorial Service	3,602	3,366	236	7.0%
Maintenance Contracts	845	842	3	0.3%
Other Contractual Services	3,451	2,934	517	17.6%
Professional & Tech Service	1,237	1,320	(82)	-6.2%
Utilities	3,312	3,348	(36)	-1.1%
Administrative Service Fee	826	712	114	16.0%
Aircraft Rescue Fire Fighting	2,536	2,011	524	26.1%
Other Expenses	572	654	(82)	-12.5%
Operating Expenses Before Capitalized Salaries	48,384	45,394	2,990	6.6%
Capitalized Salaries	585	560	25	4.4%
Total Operating Expenses	47,800	44,833	2,966	6.6%
Operating Income	\$ 34,468	\$ 31,280	\$ 3,187	10.2%



**SALT LAKE CITY INTERNATIONAL AIRPORT
AIR TRAFFIC STATISTICS AND ACTIVITY REPORT
TWELVE MONTHS ENDED DECEMBER 2017**

	DECEMBER 2017	CHANGE	YTD 2017	CHANGE	12 MO ROLLING Ending 12/2017	CHANGE
PASSENGERS						
<i>DOMESTIC</i>						
Enplaned - Local	596,725	3.55%	7,532,369	7.11%	7,532,369	7.11%
Enplaned - Connections	350,611	-0.79%	4,566,717	0.36%	4,566,717	0.36%
Less International Enplaned	-30,182		-446,716		-446,716	
	917,154	2.03%	11,652,370	3.98%	11,652,370	3.98%
Deplaned - Local	634,730	4.83%	7,533,548	7.27%	7,533,548	7.27%
Deplaned - Connection	350,611	-0.79%	4,566,717	0.36%	4,566,717	0.36%
Less International Deplaned	-29,368		-467,447		-467,447	
	955,973	2.91%	11,632,818	3.97%	11,632,818	3.97%
TOTAL DOMESTIC	1,873,127	2.48%	23,285,188	3.97%	23,285,188	3.97%
<i>INTERNATIONAL</i>						
Enplaned	30,182	-1.83%	446,716	18.90%	446,716	18.90%
Deplaned	29,368	-1.86%	467,447	21.69%	467,447	21.69%
TOTAL INTERNATIONAL	59,550	-1.84%	914,163	20.32%	914,163	20.32%
TOTAL PASSENGERS	1,932,677	2.34%	24,199,351	4.51%	24,199,351	4.51%
LANDED WEIGHT						
Air Carriers	1,096,694,513	0.88%	13,489,989,665	4.28%	13,489,989,665	4.28%
Cargo Carriers	126,446,747	1.29%	1,126,939,006	3.93%	1,126,939,006	3.93%
TOTAL LANDED WEIGHT (LBS)	1,223,141,260	0.93%	14,616,928,671	4.25%	14,616,928,671	4.25%
MAIL						
Enplaned	1,274,198	-2.11%	23,476,276	15.43%	23,476,276	15.43%
Deplaned	1,135,652	-0.59%	13,618,441	35.11%	13,618,441	35.11%
TOTAL MAIL (LBS)	2,409,850	-1.40%	37,094,717	21.95%	37,094,717	21.95%
CARGO						
Enplaned	17,079,518	1.98%	178,457,058	7.63%	178,457,058	7.63%
Deplaned	20,017,937	1.31%	203,746,053	8.41%	203,746,053	8.41%
TOTAL CARGO (LBS)	37,097,455	1.61%	382,203,111	8.04%	382,203,111	8.04%
MAIL & CARGO						
Enplaned	8,540	1.98%	89,229	7.63%	89,229	7.63%
Deplaned	10,009	1.31%	101,873	8.41%	101,873	8.41%
TOTAL MAIL & CARGO (TONS)	18,549	1.62%	191,102	8.04%	191,102	8.04%
AIRCRAFT OPERATIONS						
Passenger Aircraft	20,652	1.00%	249,020	2.29%	249,020	2.29%
All-Cargo Aircraft	2,038	-3.04%	20,140	0.51%	20,140	0.51%
General Aviation	3,778	12.94%	50,905	2.96%	50,905	2.96%
Military	387	-16.23%	7,227	0.32%	7,227	0.32%
TOTAL AIRCRAFT OPERATIONS	26,855	1.89%	327,292	2.23%	327,292	2.23%

**SALT LAKE CITY INTERNATIONAL AIRPORT
PASSENGER TRAFFIC REPORT
TWELVE MONTHS ENDED DECEMBER 2017**

	DECEMBER 2016	DECEMBER 2017	% CHANGE	YTD 2016	YTD 2017	% CHANGE	12 MO ROLLING Ending 12/2017	% CHANGE
ENPLANED PASSENGERS								
AEROMEXICO		251	100.0%		251	100.0%	251	100.0%
AIR CANADA	707	-	-100.0%	13,053	17,393	33.2%	17,393	33.2%
ALASKA	24,006	20,713	-13.7%	281,903	288,160	2.2%	288,160	2.2%
Horizon Air / Alaska	3,693	1,871	-49.3%	58,834	34,571	-41.2%	34,571	-41.2%
Skywest / Alaska	5,280	5,366	1.6%	80,880	73,605	-9.0%	73,605	-9.0%
AMERICAN	46,192	52,969	14.7%	597,656	632,792	5.9%	632,792	5.9%
American Eagle/Republic	-	-	0.0%	6,876	-	-100.0%	-	-100.0%
Compass	4,106	1,890	-54.0%	61,975	36,323	-41.4%	36,323	-41.4%
Envoy Air	2,544	-	-100.0%	23,790	1,137	-95.2%	1,137	-95.2%
American/Mesa Air	-	-	0.0%	2,893	-	-100.0%	-	-100.0%
SkyWest (American)	3,725	6,009	61.3%	49,316	92,550	87.7%	92,550	87.7%
DELTA	462,820	462,205	-0.1%	5,801,458	6,312,890	8.8%	6,312,890	8.8%
SkyWest (Delta Connection)	185,180	180,476	-2.5%	2,180,100	2,045,769	-6.2%	2,045,769	-6.2%
Compass (Delta Connection)	4,261	21,255	398.8%	121,117	113,414	-6.4%	113,414	-6.4%
FRONTIER	19,380	20,788	7.3%	231,416	234,920	1.5%	234,920	1.5%
JETBLUE	21,901	31,900	45.7%	257,022	330,084	28.4%	330,084	28.4%
KLM ROYAL DUTCH AIRLINES	-	-	0.0%	13,431	19,955	48.6%	19,955	48.6%
SOUTHWEST	93,679	98,817	5.5%	1,227,360	1,246,652	1.6%	1,246,652	1.6%
UNITED	27,578	19,496	-29.3%	232,883	286,747	23.1%	286,747	23.1%
Express Jet	-	100	100.0%	446	131	-70.6%	131	-70.6%
Mesa Airlines (United Express)	963	1,760	82.8%	3,335	16,533	395.7%	16,533	395.7%
Republic Airways (United)	2,331	800	-65.7%	15,239	36,781	141.4%	36,781	141.4%
Shuttle America (United Express)	-	-	0.0%	9,671	-	-100.0%	-	-100.0%
SkyWest (United Express)	19,660	19,660	0.0%	301,531	269,889	-10.5%	269,889	-10.5%
Trans States	436	660	51.4%	3,912	979	-75.0%	979	-75.0%
Charters	1,229	350	-71.5%	6,420	7,560	17.8%	7,560	17.8%
TOTAL ENPLANED PASSENGERS	929,671	947,336	1.9%	11,582,517	12,099,086	4.5%	12,099,086	4.5%
DEPLANED PASSENGERS								
AeroMexico	-	284	100.0%	5	284	5580.0%	284	5580.0%
AIR CANADA	999	-	-100.0%	14,040	16,789	19.6%	16,789	19.6%
ALASKA AIR	23,885	21,407	-10.4%	273,890	283,367	3.5%	283,367	3.5%
Horizon Air / Alaska	3,776	1,949	-48.4%	56,987	31,866	-44.1%	31,866	-44.1%
Skywest / Alaska	5,511	5,581	1.3%	82,223	77,308	-6.0%	77,308	-6.0%
AMERICAN	49,522	56,043	13.2%	596,716	627,573	5.2%	627,573	5.2%
American Eagle/Republic	-	-	0.0%	6,982	-	-100.0%	-	-100.0%
Compass	3,968	1,974	-50.3%	56,648	35,886	-36.7%	35,886	-36.7%
Envoy Air (American)	3,002	-	-100.0%	22,702	1,017	-95.5%	1,017	-95.5%
American/Mesa Air	-	-	0.0%	3,210	-	-100.0%	-	-100.0%
SkyWest (American)	3,721	6,398	71.9%	48,247	89,746	86.0%	89,746	86.0%
DELTA	478,896	480,393	0.3%	5,807,212	6,315,202	8.7%	6,315,202	8.7%
SkyWest (Delta Connection)	186,652	187,459	0.4%	2,183,650	2,042,520	-6.5%	2,042,520	-6.5%
Compass (Delta Connection)	4,296	22,715	428.7%	119,306	113,441	-4.9%	113,441	-4.9%
FRONTIER	20,325	21,204	4.3%	232,013	239,418	3.2%	239,418	3.2%
JETBLUE	23,181	33,533	44.7%	257,814	329,198	27.7%	329,198	27.7%
KLM ROYAL DUTCH AIRLINES	-	-	0.0%	15,864	39,726	150.4%	39,726	150.4%
SOUTHWEST	97,813	102,289	4.6%	1,228,156	1,247,191	1.5%	1,247,191	1.5%
UNITED	27,429	20,008	-27.1%	227,379	274,584	20.8%	274,584	20.8%
Express Jet	-	99	100.0%	452	174	-61.5%	174	-61.5%
Mesa Airlines / United Express	1,051	1,706	62.3%	3,437	16,825	389.5%	16,825	389.5%
Republic Airways (United)	2,843	868	-69.5%	16,562	38,239	130.9%	38,239	130.9%
Shuttle America (United Express)	-	-	0.0%	9,833	-	-100.0%	-	-100.0%
SkyWest (United Express)	20,260	20,260	0.0%	297,510	270,941	-8.9%	270,941	-8.9%
Trans States	426	638	49.8%	3,855	952	-75.3%	952	-75.3%
Charters	1,325	533	-59.8%	8,317	8,018	-3.6%	8,018	-3.6%
TOTAL DEPLANED PASSENGERS	958,881	985,341	2.8%	11,573,010	12,100,265	4.6%	12,100,265	4.6%
TOTAL PASSENGERS*	1,888,552	1,932,677	2.3%	23,155,527	24,199,351	4.5%	24,199,351	4.5%
INTERNATIONAL - ENPLANED								
AEROMEXICO	-	251	100.0%	-	251	100.0%	251	100.0%
AIR CANADA	707	-	-100.0%	13,053	17,393	33.2%	17,393	33.2%
DELTA	24,165	24,175	0.0%	261,697	316,621	21.0%	316,621	21.0%
SkyWest (Delta Connection)	5,872	5,756	-2.0%	76,380	82,885	8.5%	82,885	8.5%
Compass	-	-	0.0%	11,132	9,469	-14.9%	9,469	-14.9%
KLM ROYAL DUTCH AIRLINES	-	-	0.0%	13,431	19,955	48.6%	19,955	48.6%
Charters	-	-	0.0%	-	142	100.0%	142	100.0%
TOTAL ENPLANED INTERNATIONAL	30,744	30,182	-1.8%	375,693	446,716	18.9%	446,716	18.9%
INTERNATIONAL - DEPLANED								
AEROMEXICO	-	284	100.0%	5	284	5580.0%	284	5580.0%
AIR CANADA	999	-	-100.0%	14,040	16,789	19.6%	16,789	19.6%
DELTA	23,157	23,321	0.7%	263,105	319,977	21.6%	319,977	21.6%
SkyWest (Delta Connection)	5,769	5,630	-2.4%	80,952	80,833	-0.1%	80,833	-0.1%
Compass	-	-	0.0%	10,148	9,705	-4.4%	9,705	-4.4%
KLM ROYAL DUTCH AIRLINES	-	-	0.0%	15,864	39,726	150.4%	39,726	150.4%
Charters	-	133	100.0%	-	133	100.0%	133	100.0%
TOTAL DEPLANED INTERNATIONAL	29,925	29,368	-1.9%	384,114	467,447	21.7%	467,447	21.7%
TOTAL INTERNATIONAL PASSENGERS	60,669	59,550	-1.8%	759,807	914,163	20.3%	914,163	20.3%

*Includes International

SALT LAKE CITY INTERNATIONAL AIRPORT
TWELVE MONTHS ENDED DECEMBER 2017
Based on Total Enplanements

MARKET SHARE

	DECEMBER 2016	MARKET SHARE	DECEMBER 2017	MARKET SHARE	YTD 2016	MARKET SHARE	YTD 2017	MARKET SHARE	12 MO ROLLING Ending 12/2016	12 MO ROLLING Ending 12/2017	MARKET SHARE
AEROMEXICO	-	0.00%	251	0.03%	-	0.00%	251	0.00%	-	251	0.00%
AIR CANADA	707	0.08%	-	0.00%	13,053	0.11%	17,393	0.14%	13,053	17,393	0.14%
ALASKA	32,979	3.55%	27,950	2.95%	421,617	3.64%	396,336	3.28%	421,617	396,336	3.28%
AMERICAN	56,567	6.08%	60,868	6.43%	742,506	6.41%	762,802	6.30%	742,506	762,802	6.30%
DELTA	652,261	70.16%	663,936	70.08%	8,102,675	69.96%	8,472,073	70.02%	8,102,675	8,472,073	70.02%
FRONTIER	19,380	2.08%	20,788	2.19%	231,416	2.00%	234,920	1.94%	231,416	234,920	1.94%
JETBLUE	21,901	2.36%	31,900	3.37%	257,022	2.22%	330,084	2.73%	257,022	330,084	2.73%
KLM ROYAL DUTCH	-	0.00%	-	0.00%	13,431	0.12%	19,955	0.16%	13,431	19,955	0.16%
SOUTHWEST	93,679	10.08%	98,817	10.43%	1,227,360	10.60%	1,246,652	10.30%	1,227,360	1,246,652	10.30%
UNITED	50,968	5.48%	42,476	4.48%	567,017	4.90%	611,060	5.05%	567,017	611,060	5.05%
Charters	1,229	0.13%	350	0.04%	6,420	0.06%	7,560	0.06%	6,420	7,560	0.06%
TOTAL ENPLANEMENTS	929,671	100%	947,336	100%	11,582,517	100%	12,099,086	100%	11,582,517	12,099,086	100%

PERCENT CHANGE YOY

	DECEMBER 2016	DECEMBER 2017	PERCENT CHANGE	YTD 2016	YTD 2017	PERCENT CHANGE	12 MO ROLLING Ending 12/2016	12 MO ROLLING Ending 12/2017	PERCENT CHANGE
AEROMEXICO	-	251	100.00%	-	251	100.00%	-	251	100.00%
AIR CANADA	707	-	-100.00%	13,053	17,393	33.25%	13,053	17,393	33.25%
ALASKA	32,979	27,950	-15.25%	421,617	396,336	-6.00%	421,617	396,336	-6.00%
AMERICAN	56,567	60,868	7.60%	742,506	762,802	2.73%	742,506	762,802	2.73%
DELTA	652,261	663,936	1.79%	8,102,675	8,472,073	4.56%	8,102,675	8,472,073	4.56%
FRONTIER	19,380	20,788	7.27%	231,416	234,920	1.51%	231,416	234,920	1.51%
JETBLUE	21,901	31,900	45.66%	257,022	330,084	28.43%	257,022	330,084	28.43%
KLM ROYAL DUTCH	-	-	0.00%	13,431	19,955	48.57%	13,431	19,955	48.57%
SOUTHWEST	93,679	98,817	5.48%	1,227,360	1,246,652	1.57%	1,227,360	1,246,652	1.57%
UNITED	50,968	42,476	-16.66%	567,017	611,060	7.77%	567,017	611,060	7.77%
Charters	1,229	350	-71.52%	6,420	7,560	17.76%	6,420	7,560	17.76%
TOTAL ENPLANEMENTS	929,671	947,336	1.9%	11,582,517	12,099,086	4.5%	11,582,517	12,099,086	4.5%

**SALT LAKE CITY INTERNATIONAL AIRPORT
LANDING ACTIVITY
TWELVE MONTHS ENDED DECEMBER 2017**

	DECEMBER 2016	DECEMBER 2017	CHANGE	YTD 2016	YTD 2017	CHANGE	12 MO ROLLING Ending 12/2017	% CHANGE
TOTAL NUMBER OF LANDINGS								
SCHEDULED CARRIERS								
AEROMEXICO	-	2	100.0%	1	2	100.0%	2	100.0%
AIR CANADA	16	-	-100.0%	191	230	20.4%	230	20.4%
ALASKA	210	169	-19.5%	2,387	2,318	-2.9%	2,318	-2.9%
Horizon Air / Alaska	62	31	-50.0%	979	565	-42.3%	565	-42.3%
Skywest / Alaska	89	87	-2.2%	1,386	1,171	-15.5%	1,171	-15.5%
AMERICAN	363	423	16.5%	4,427	4,652	5.1%	4,652	5.1%
Compass	60	31	-48.3%	844	585	-30.7%	585	-30.7%
American Eagle/Republic	-	-	0.0%	99	-	-100.0%	-	-100.0%
American/Mesa Air	1	-	-100.0%	54	1	-98.1%	1	-98.1%
Envoy Air (American)	45	1	-97.8%	409	19	-95.4%	19	-95.4%
SkyWest (American)	61	112	83.6%	942	1,560	65.6%	1,560	65.6%
DELTA	3,445	3,503	1.7%	41,710	46,103	10.5%	46,103	10.5%
SkyWest (Delta Connection)	3,571	3,279	-8.2%	41,696	38,411	-7.9%	38,411	-7.9%
Compass (Delta Connection)	66	331	401.5%	1,864	1,654	-11.3%	1,654	-11.3%
FRONTIER	120	129	7.5%	1,609	1,405	-12.7%	1,405	-12.7%
JETBLUE	184	247	34.2%	1,849	2,515	36.0%	2,515	36.0%
KLM ROYAL DUTCH AIRLINES	-	-	0.0%	69	93	34.8%	93	34.8%
SOUTHWEST	816	882	8.1%	9,759	11,047	13.2%	11,047	13.2%
UNITED	226	158	-30.1%	1,801	2,126	18.0%	2,126	18.0%
Express Jet	-	2	100.0%	15	4	-73.3%	4	-73.3%
Mesa / United Express	14	25	78.6%	47	234	397.9%	234	397.9%
Republic Airways Holdings	31	13	-58.1%	241	574	138.2%	574	138.2%
SkyWest (United Express)	332	426	28.3%	4,790	4,447	-7.2%	4,447	-7.2%
Shuttle America (United Express)	-	-	0.0%	147	-	-100.0%	-	-100.0%
Trans States	9	35	288.9%	84	41	-51.2%	41	-51.2%
SUBTOTAL SCHEDULED CARRIERS:	9,721	9,886	1.7%	117,400	119,757	2.0%	119,757	2.0%
CHARTER CARRIERS								
ALLEGiant AIR	1	2	100.0%	13	10	-23.1%	10	-23.1%
BOMBARDIER BUSINESS JETS	38	24	-36.8%	234	236	0.9%	236	0.9%
BOUTIQUE AIR	105	83	-21.0%	1,123	1,298	15.6%	1,298	15.6%
DELTA PRIVATE JETS	21	16	-23.8%	176	214	21.6%	214	21.6%
EXECUTIVE JET MANAGEMENT	19	21	10.5%	109	136	24.8%	136	24.8%
FLIGHT OPTIONS	12	13	8.3%	133	109	-18.0%	109	-18.0%
KEYLIME AIR	1	-	-100.0%	24	9	-62.5%	9	-62.5%
NETJETS	144	139	-3.5%	1,234	1,330	7.8%	1,330	7.8%
SUNSET AVIATION	2	1	-50.0%	26	53	103.8%	53	103.8%
SWIFT AIR	-	-	0.0%	27	13	-51.9%	13	-51.9%
VIRGIN AMERICA	42	7	-83.3%	44	59	34.1%	59	34.1%
XOJET	29	23	-20.7%	192	196	2.1%	196	2.1%
OTHER CHARTER	89	111	24.7%	989	1,080	9.2%	1,080	9.2%
SUBTOTAL CHARTER CARRIERS:	503	440	-12.5%	4,324	4,743	9.7%	4,743	9.7%
CARGO CARRIERS								
ABX AIR (DHL)	-	-	0.0%	1	-	-100.0%	-	-100.0%
AERO CHARTER & TRANSPORT	22	21	-4.5%	252	261	3.6%	261	3.6%
AIR TRANSPORT INTERNATIONAL	2	3	50.0%	6	11	83.3%	11	83.3%
AMERIFLIGHT	342	306	-10.5%	3,914	3,224	-17.6%	3,224	-17.6%
CORPORATE AIR (BILLINGS)	135	131	-3.0%	1,297	1,331	2.6%	1,331	2.6%
EMPIRE	17	16	-5.9%	205	201	-2.0%	201	-2.0%
FEDERAL EXPRESS	171	165	-3.5%	1,716	1,619	-5.7%	1,619	-5.7%
GEM AIR	76	81	6.6%	327	458	40.1%	458	40.1%
SOUTHERN AIR	49	42	-14.3%	558	520	-6.8%	520	-6.8%
UPS	156	160	2.6%	1,175	1,373	16.9%	1,373	16.9%
WESTERN AIR EXPRESS	35	20	-42.9%	423	323	-23.6%	323	-23.6%
OTHER CARGO	46	74	60.9%	145	750	417.2%	750	417.2%
SUBTOTAL CARGO CARRIERS:	1,051	1,019	-3.0%	10,019	10,071	0.5%	10,071	0.5%
TOTAL LANDINGS	11,275	11,345	0.6%	131,743	134,571	2.1%	134,571	2.1%
TOTAL LANDED WEIGHT								
SCHEDULED CARRIERS								
AEROMEXICO	-	274,300	100.0%	94,798	274,300	189.4%	274,300	189.4%
AIR CANADA	1,552,000	-	-100.0%	18,527,000	22,310,000	20.4%	22,310,000	20.4%
ALASKA	30,919,100	25,325,000	-18.1%	338,488,000	342,923,800	1.3%	342,923,800	1.3%
Horizon Air / Alaska	3,828,500	1,914,250	-50.0%	60,453,250	35,417,030	-41.4%	35,417,030	-41.4%
Skywest / Alaska	6,655,259	6,465,345	-2.9%	98,247,599	86,117,657	-12.3%	86,117,657	-12.3%
AMERICAN	52,305,700	59,967,580	14.6%	641,076,734	679,431,996	6.0%	679,431,996	6.0%
Compass	4,497,000	2,323,450	-48.3%	63,257,800	43,845,750	-30.7%	43,845,750	-30.7%
American Eagle/Republic	-	-	0.0%	7,420,050	-	-100.0%	-	-100.0%
Envoy Air (American)	3,259,900	67,000	-97.9%	27,604,240	1,408,150	-94.9%	1,408,150	-94.9%
American/Mesa Air	73,500	75,100	2.2%	3,969,000	75,100	-98.1%	75,100	-98.1%
SkyWest (American)	4,087,000	7,504,000	83.6%	54,474,000	104,340,000	91.5%	104,340,000	91.5%
DELTA	534,575,024	528,300,560	-1.2%	6,486,639,844	6,903,014,715	6.4%	6,903,014,715	6.4%
SkyWest (Delta Connection)	213,640,541	199,302,185	-6.7%	2,486,101,572	2,299,934,871	-7.5%	2,299,934,871	-7.5%

**SALT LAKE CITY INTERNATIONAL AIRPORT
LANDING ACTIVITY
TWELVE MONTHS ENDED DECEMBER 2017**

	DECEMBER 2016	DECEMBER 2017	CHANGE	YTD 2016	YTD 2017	CHANGE	12 MO ROLLING Ending 12/2017	% CHANGE
Compass (Delta Connection)	4,950,218	24,883,587	402.7%	139,550,996	124,251,046	-11.0%	124,251,046	-11.0%
FRONTIER	18,491,238	19,057,918	3.1%	224,517,006	212,257,662	-5.5%	212,257,662	-5.5%
JETBLUE	26,164,800	35,123,400	34.2%	262,926,656	357,632,626	36.0%	357,632,626	36.0%
KLM ROYAL DUTCH AIRLINES	-	-	0.0%	27,669,000	39,576,150	43.0%	39,576,150	43.0%
SOUTHWEST	104,918,000	114,962,000	9.6%	1,266,748,000	1,433,784,000	13.2%	1,433,784,000	13.2%
UNITED	31,643,900	22,677,240	-28.3%	258,942,520	308,558,220	19.2%	308,558,220	19.2%
Express Jet	-	88,184	100.0%	692,288	176,368	-74.5%	176,368	-74.5%
Mesa / United Express	1,050,000	1,875,000	78.6%	3,525,000	17,550,000	397.9%	17,550,000	397.9%
Republic Airways Holdings	2,244,317	942,701	-58.0%	17,287,892	41,585,338	140.5%	41,585,338	140.5%
SkyWest (United Express)	22,600,561	29,236,626	29.4%	320,434,108	305,986,231	-4.5%	305,986,231	-4.5%
Shuttle America (United Express)	-	-	0.0%	10,629,864	-	-100.0%	-	-100.0%
Trans States	396,900	2,550,000	542.5%	3,606,687	2,876,700	-20.2%	2,876,700	-20.2%
SUBTOTAL SCHEDULED CARRIERS:	1,067,853,458	1,082,915,426	1.4%	12,822,883,904	13,363,327,710	4.2%	13,363,327,710	4.2%
CHARTER CARRIERS								
ALLEGIAN AIR	198,000	-	-100.0%	2,340,000	1,395,000	-40.4%	1,395,000	-40.4%
BOMBARDIER	1,307,167	959,122	-30.5%	7,902,341	8,721,912	10.4%	8,721,912	10.4%
BOUTIQUE AIR	1,157,980	1,107,840	-4.3%	12,088,560	14,251,070	17.9%	14,251,070	17.9%
DELTA PRIVATE JETS	646,050	357,700	-44.6%	4,618,865	5,541,550	20.0%	5,541,550	20.0%
EXECUTIVE JET MANAGEMENT	771,600	975,150	26.4%	4,909,485	6,455,249	31.5%	6,455,249	31.5%
FLIGHT OPTIONS	232,250	267,085	15.0%	2,810,540	2,352,425	-16.3%	2,352,425	-16.3%
KEYLIME AIR	31,724	31,724	0.0%	761,379	285,518	-62.5%	285,518	-62.5%
NETJETS	4,448,624	4,243,830	-4.6%	35,768,461	39,951,169	11.7%	39,951,169	11.7%
SIERRA PACIFIC	-	-	0.0%	743,000	855,000	15.1%	855,000	15.1%
SUN COUNTRY	146,300	1,462,700	899.8%	1,609,000	3,510,300	118.2%	3,510,300	118.2%
SWIFT AIR	726,000	-	-100.0%	3,267,000	1,171,925	-64.1%	1,171,925	-64.1%
VIRGIN AMERICA	5,988,851	995,386	-83.4%	6,273,247	8,399,603	33.9%	8,399,603	33.9%
XOJET	941,700	752,850	-20.1%	6,216,150	6,408,300	3.1%	6,408,300	3.1%
OTHER CHARTER	2,635,891	2,625,700	-0.4%	24,526,773	26,231,460	7.0%	26,231,460	7.0%
SUBTOTAL CHARTER CARRIERS:	19,232,137	13,779,087	-28.4%	113,834,801	125,530,481	10.3%	125,530,481	10.3%
CARGO CARRIERS								
ABX AIR (DHL)	-	-	0.0%	320,000	-	-100.0%	-	-100.0%
AERO CHARTER & TRANSPORT	150,700	143,850	-4.5%	1,726,200	1,790,920	3.7%	1,790,920	3.7%
AIR TRANSPORT INTERNATIONAL	37,500	55,500	48.0%	111,000	204,000	83.8%	204,000	83.8%
ALPINE AVIATION	660,100	1,016,800	54.0%	1,996,400	10,374,800	419.7%	10,374,800	419.7%
AMERIFLIGHT	4,859,950	4,294,844	-11.6%	51,880,324	45,786,644	-11.7%	45,786,644	-11.7%
ATLAS AIR	-	1,184,000	100.0%	1,088,000	11,112,000	921.3%	11,112,000	921.3%
CORPORATE AIR (BILLINGS)	1,147,500	1,113,500	-3.0%	11,024,500	11,313,500	2.6%	11,313,500	2.6%
EMPIRE	734,678	692,694	-5.7%	7,468,083	7,490,499	0.3%	7,490,499	0.3%
FEDEX EXPRESS	58,791,600	60,005,500	2.1%	566,610,700	557,683,200	-1.6%	557,683,200	-1.6%
GEM AIR	565,865	642,000	13.5%	2,385,807	3,588,380	50.4%	3,588,380	50.4%
SOUTHERN AIR INC	5,931,899	5,122,586	-13.6%	68,237,154	63,180,910	-7.4%	63,180,910	-7.4%
UPS	51,295,060	51,106,260	-0.4%	365,566,240	407,633,720	11.5%	407,633,720	11.5%
WESTERN AIR EXPRESS	455,000	260,000	-42.9%	5,449,600	4,056,100	-25.6%	4,056,100	-25.6%
OTHER CARGO	209,300	809,213	286.6%	468,500	2,883,807	515.5%	2,883,807	515.5%
SUBTOTAL CARGO CARRIERS:	124,839,152	126,446,747	1.3%	1,084,332,508	1,127,098,480	3.9%	1,127,098,480	3.9%
TOTAL LANDINGS	1,211,924,747	1,223,141,260	0.9%	14,021,261,213	14,616,928,671	4.2%	14,616,928,671	4.2%

**SALT LAKE CITY INTERNATIONAL AIRPORT
CARGO ACTIVITY REPORT
TWELVE MONTHS ENDED DECEMBER 2017**

	DECEMBER 2016	DECEMBER 2017	CHANGE	YTD 2016	YTD 2017	CHANGE	12 MO ROLLING Ending 12/2017	% CHANGE
ENPLANED CARGO								
PASSENGER CARRIERS								
ALASKA	1,695	14,063	729.68%	129,019	178,924	38.68%	178,924	38.68%
Horizon Air / Alaska	-	95	100.00%	1,418	1,023	-27.86%	1,023	-27.86%
Skywest / Alaska	30	-	-100.00%	12,819	1,030	-91.97%	1,030	-91.97%
AMERICAN	9,991	43,442	334.81%	427,337	290,731	-31.97%	290,731	-31.97%
American Eagle/Republic	-	-	0.00%	273	-	-100.00%	-	-100.00%
Compass	-	-	0.00%	2	-	-100.00%	-	-100.00%
Envoy Air (American)	280	-	-100.00%	884	-	-100.00%	-	-100.00%
Mesa	-	-	0.00%	8	-	-100.00%	-	-100.00%
SkyWest (American)	-	-	0.00%	2,442	479	-80.38%	479	-80.38%
DELTA	1,098,105	1,312,477	19.52%	9,244,018	13,484,171	45.87%	13,484,171	45.87%
KLM ROYAL DUTCH	-	-	0.00%	346,267	400,078	15.54%	400,078	15.54%
SOUTHWEST	262,179	259,363	-1.07%	4,204,922	3,727,976	-11.34%	3,727,976	-11.34%
UNITED	5,104	3,886	-23.86%	109,539	63,266	-42.24%	63,266	-42.24%
Others	-	-	0.00%	20,200	345	-98.29%	345	-98.29%
CARGO CARRIERS								
ABX AIR (DHL)	-	-	0.00%	16,001	-	-100.00%	-	-100.00%
FEDEX EXPRESS*	8,573,165	8,789,656	2.53%	92,190,185	91,497,881	-0.75%	91,497,881	-0.75%
GEM AIR	64,135	83,263	29.82%	233,936	448,760	91.83%	448,760	91.83%
SOUTHERN AIR	348,122	313,424	-9.97%	4,334,094	4,520,728	4.31%	4,520,728	4.31%
UPS	5,434,597	5,155,428	-5.14%	45,467,649	47,999,530	5.57%	47,999,530	5.57%
MISC CARGO	951,194	1,104,421	16.11%	9,065,166	15,842,136	74.76%	15,842,136	74.76%
TOTAL ENPLANED CARGO	16,748,597	17,079,518	1.98%	165,806,179	178,457,058	7.63%	178,457,058	7.63%
DEPLANED CARGO								
PASSENGER CARRIERS								
ALASKA	22,918	30,759	34.21%	253,676	297,163	17.14%	297,163	17.14%
Horizon Air / Alaska	227	773	240.53%	3,816	5,805	52.12%	5,805	52.12%
Skywest / Alaska	219	368	68.04%	20,393	7,168	-64.85%	7,168	-64.85%
AMERICAN	30,099	19,641	-34.75%	396,497	419,342	5.76%	419,342	5.76%
American Eagle/Republic	-	-	0.00%	1,570	-	-100.00%	-	-100.00%
Compass	-	-	0.00%	694	6,826	883.57%	6,826	883.57%
Envoy Air (American)	151	-	-100.00%	223	-	-100.00%	-	-100.00%
SkyWest (American)	-	52	100.00%	4,023	6,440	60.08%	6,440	60.08%
DELTA	1,619,188	1,578,910	-2.49%	14,245,350	17,675,183	24.08%	17,675,183	24.08%
KLM ROYAL DUTCH	-	-	0.00%	491,488	894,108	81.92%	894,108	81.92%
SOUTHWEST	332,499	395,569	18.97%	4,764,935	4,650,999	-2.39%	4,650,999	-2.39%
UNITED	33,951	24,458	-27.96%	318,758	322,991	1.33%	322,991	1.33%
Others	11,611	-	-100.00%	11,611	32,947	183.76%	32,947	183.76%
CARGO CARRIERS								
ABX AIR (DHL)	-	-	0.00%	1,069	-	-100.00%	-	-100.00%
FEDEX EXPRESS*	9,694,250	9,628,165	-0.68%	94,636,543	100,741,510	6.45%	100,741,510	6.45%
GEM AIR	11,506	19,438	68.94%	161,238	219,693	36.25%	219,693	36.25%
SOUTHERN AIR	638,351	506,800	-20.61%	5,725,379	5,342,883	-6.68%	5,342,883	-6.68%
UPS	6,881,566	7,528,767	9.40%	62,281,881	69,415,941	11.45%	69,415,941	11.45%
MISC CARGO	482,857	284,237	-41.13%	4,622,421	3,707,054	-19.80%	3,707,054	-19.80%
TOTAL DEPLANED CARGO	19,759,393	20,017,937	1.31%	187,941,565	203,746,053	8.41%	203,746,053	8.41%
TOTAL CARGO	36,507,990	37,097,455	1.61%	353,747,744	382,203,111	8.04%	382,203,111	8.04%

*FEDEX EXPRESS includes mail



Salt Lake City
Department of Airports

COMPARISON OF ON TIME OPERATIONS NOVEMBER 2017

ARRIVALS

Airport	Flights	% On Time	Rank
ATL HARTSFIELD-JACKSON ATLANTA INTL	28,248	93.8	1
IAH HOUSTON GEORGE BUSH	10,045	93.0	2
DFW DALLAS-FT. WORTH REGIONAL	14,357	92.1	3
BWI BALTIMORE/WASHINGTON INTL	8,471	91.7	4
DEN DENVER INTL	17,626	91.4	5
MSP MINNEAPOLIS-ST. PAUL INTL	10,778	91.2	6
IAD WASHINGTON DULLES	2,993	90.9	7
CLT CHARLOTTE DOUGLAS	9,164	90.8	8
SLC SALT LAKE CITY INTL	8,685	90.8	9
DTW DETROIT METRO WAYNE CNTY	10,506	90.6	10
TPA TAMPA INTL	5,781	90.2	11
MIA MIAMI INTL	5,451	89.8	12
FLL FT. LAUDERDALE	7,260	89.5	13
CVG CINCINNATI NORTHERN INT. KY	1,567	89.3	14
PHX PHOENIX SKY HARBOR INTL	11,955	89.2	15
JFK NEW YORK JFK INTL	7,174	88.9	16
DCA RONALD REAGAN NATIONAL	5,934	88.6	17
STL ST. LOUIS LAMBERT INTL	4,554	88.3	18
ORD CHICAGO O HARE	20,705	88.2	19
PHL PHILADELPHIA INTL	5,929	87.9	20
BOS BOSTON LOGAN INTL	10,209	87.8	21
LAS LAS VEGAS MCCARRAN INTL	11,981	87.8	22
MCO ORLANDO INTL	10,603	87.1	23
LAX LOS ANGELES INTL	17,071	86.7	24
PDX PORTLAND INTL	4,976	86.5	25
MDW CHICAGO MIDWAY	7,085	85.6	26
LGA NEW YORK LAGUARDIA	7,743	85.3	27
SAN SAN DIEGO LINDBERGH FIELD	6,834	84.8	28
SEA SEATTLE-TACOMA INTL	10,881	80.7	29
EWK NEWARK LIBERTY INTERNATIONAL	9,454	76.2	30
SFO SAN FRANCISCO INTL	14,533	75.4	31
AVERAGES	9,953	88.1	

DEPARTURES

Airport	Flights	% On Time	Rank
IAH HOUSTON GEORGE BUSH	10,051	91.9	1
ATL HARTSFIELD-JACKSON ATLANTA INTL	28,243	91.7	2
SLC SALT LAKE CITY INTL	8,682	91.5	3
IAD WASHINGTON DULLES	2,995	91.4	4
MSP MINNEAPOLIS-ST. PAUL INTL	10,774	91.2	5
JFK NEW YORK JFK INTL	7,178	90.2	6
CLT CHARLOTTE DOUGLAS	9,161	90.0	7
CVG CINCINNATI NORTHERN INT. KY	1,569	89.7	8
DTW DETROIT METRO WAYNE CNTY	10,506	89.7	9
DFW DALLAS-FT. WORTH REGIONAL	14,359	89.4	10
DCA RONALD REAGAN NATIONAL	5,934	89.2	11
DEN DENVER INTERNATIONAL	17,627	89.1	12
MIA MIAMI INTL	5,452	88.9	13
TPA TAMPA INTERNATIONAL	5,778	88.8	14
PHX PHOENIX SKY HARBOR INTL	11,950	88.5	15
BWI BALTIMORE/WASHINGTON INTL	8,478	88.1	16
PDX PORTLAND INTERNATIONAL	4,977	88.0	17
BOS BOSTON LOGAN INTERNATIONAL	10,204	87.9	18
FLL FT. LAUDERDALE	7,261	87.6	19
PHL PHILADELPHIA INTL	5,930	87.3	20
ORD CHICAGO O HARE	20,715	87.2	21
LGA NEW YORK LAGUARDIA	7,740	86.4	22
STL ST. LOUIS LAMBERT INTL	4,555	86.1	23
LAX LOS ANGELES INTL	17,060	85.7	24
MCO ORLANDO INTL	10,606	85.7	25
LAS LAS VEGAS MCCARRAN INTL	11,984	85.6	26
SAN SAN DIEGO LINDBERGH FIELD	6,835	84.8	27
SEA SEATTLE-TACOMA INTL	10,883	83.5	28
EWK NEWARK LIBERTY INTERNATIONAL	9,444	81.5	29
SFO SAN FRANCISCO INTL	14,528	81.2	30
MDW CHICAGO MIDWAY	7,086	80.9	31
AVERAGES	9,953	87.7	

ON TIME ARRIVAL PERFORMANCE AT SLC By Carrier

Air Carrier	Flights	% On Time
DL DELTA	3,472	93.8%
OO SKYWEST	3,362	90.1%
F9 FRONTIER	133	88.7%
AA AMERICAN	359	88.3%
WN SOUTHWEST	865	87.4%
B6 JETBLUE	214	85.5%
UA UNITED	113	83.2%
AS ALASKA	167	82.0%
AVERAGES	8,685	90.8%

Source: DOT Air Travel Consumer Report - Issued January 12, 2018

DESIGN AND CONSTRUCTION REPORT

TABLE OF CONTENTS

- I. Area Map of Project Locations
- II. Project Schedule
- III. Construction Analysis
- IV. Design and Construction Report

SALT LAKE CITY DEPARTMENT OF AIRPORTS
February 14, 2018



Salt Lake City
International Airport

2017 - 2018 Project Legend

Airfield

1. R/W 17-35 and T/W P & R
Pavement Rehabilitation
2. R/W 14-32 Pavement Rehabilitation
3. Airfield Signage Replacement

Landside

4. Airport Operations Center
5. Fiber Run 2200 W and 2200 N
to North Vault
6. Electric Vehicle Charging Stations















Terminal

7. Carpet Replacement - Concourse A, B, &
TU3



SALT LAKE CITY INTERNATIONAL AIRPORT
CONSTRUCTION PROGRAM
2016/2017 Construction Schedule

ID	Task Name	Start	Finish	Jun '17	Jul '17	Aug '17	Sep '17	Oct '17	Nov '17	Dec '17	Jan '18	Feb '18	Mar '18	Apr '18
1	Airfield	Mon 8/1/16	Thu 9/13/18											
2	(1) R/W 17-35 & T/W's P & R Pavement Rehabilitation	Mon 8/1/16	Mon 7/31/17											
3	(2) R/W 14-32 Pavement Rehabilitation	Mon 7/10/17	Tue 10/31/17											
4	(3) Airfield Signage Replacement	Tue 8/1/17	Thu 9/13/18											
5	Landside	Wed 6/1/16	Tue 7/24/18											
6	(4) Airport Operations Center	Wed 6/1/16	Thu 2/15/18											
7	(5) Fiber Run 2200 West and 2200 North to North Vault	Mon 8/14/17	Tue 7/24/18											
8	(6) Electric Vehicle Charging Stations	Fri 9/22/17	Tue 2/6/18											
9	Terninal	Thu 12/14/17	Tue 3/13/18											
10	(7) Carpet Replacement - Concoures A, B, and TU3	Thu 12/14/17	Tue 3/13/18											

Date: Tue 2/13/18	DESIGN		Inactive Milestone		Manual Summary	
	CONSTRUCTION		Inactive Summary		Start-only	
	SCOPING		Manual Task		Finish-only	
	SUMMARY		Duration-only		Deadline	
	Inactive Task		Manual Summary Rollup			

**SALT LAKE CITY DEPARTMENT OF AIRPORTS
CONSTRUCTION PROJECT STATUS 2017 - 2018**

#	PROJECT NAME	ENGINEER'S ESTIMATE	BID AMOUNT	APPROVED CHANGE ORDERS TO DATE	% OF COST INCREASE TO DATE	STATUS	CONTRACTOR
CONSTRUCTION							
1	R/W 17-35 & T/W's P & R Pavement Rehabilitation	\$ 11,525,000	\$ 9,871,843	\$ 121,656	1.23%	subs. complete*	Staker Parson Companies
2	Runway 14-32 Pavement Rehabilitation	\$ 3,696,205	\$ 3,852,800			on schedule	Granite Construction Company
3	Airfield Signage Replacement	\$ 3,916,511	\$ 1,844,679			on schedule	Skyline Electric Company
4	Airport Operations Center	\$ 15,000,000	\$ 16,515,000	\$ 1,029,241	6.23%	on schedule	Big D Construciton
5	Fiber Run 2200 West and 2200 North to North Vault	\$ 1,960,273	\$ 1,797,585			on schedule	Americom Technology, Inc.
6	Electric Vehicle Charging Stations	\$ 275,220	\$ 305,913	\$ 714	0.23%	complete	Paulsen Constrution
7	Carpet Replacement - Concourses A, B, and TU3	\$ 595,000	\$ 614,200			on schedule	Webb Brothers
	Total	\$ 36,968,209	\$ 34,802,020	\$ 1,151,611	3.31%		
	* Resolving electrical punch list items						
	Budget amount, Engineer's estimate, and Bid amount is based on construction cost only.						

DESIGN AND CONSTRUCTION REPORT

CONSTRUCTION

- (1) **Runway 17-35 and Taxiways P & R Pavement Rehabilitation** - The Contractor is currently working on punch list items as weather permits.
- (2) **Runway 14-32 Pavement Rehabilitation** - The Contractor is currently working on punch list items as weather permits.
- (3) **Airfield Signage Replacement** - This project is in winter shut-down as of December 15, 2017. Work will resume again in the spring of 2018 as weather permits.
- (4) **Airport Operations Center** - This project is nearing completion. The remaining punch list items will be completed by February 15, 2018.
- (5) **Fiber Run 2200 West and 2200 North to North Vault** - The Contractor has completed the installation of the communications and electrical duct banks and has begun installing the footings and foundation for the new GA54 Fiber Termination building. Work is also taking place inside the GA50 building.
- (6) **Electric Vehicle Charging Stations** - This project is substantially complete as of February 6, 2018. The Contractor is working on the final punch list items.
- (7) **Carpet Replacement - Concourses A, B, and TU3** - The carpet has been ordered and is anticipated to arrive on February 27, 2018. Work is scheduled to begin on March 1, 2018 at Terminal Unit 3.



**February 2018
Media Clippings**

Advisory Board Meeting

<https://slcairport.com/assets/pdfDocuments/AABoard/MediaClippingsFeb2018.pdf>

Compiled by P.R. & Marketing Dept.