

SALT LAKE CITY INTERNATIONAL



Airport Guide

SLC



Airport Redevelopment Program

The Salt Lake City International Airport is undergoing a complete redevelopment over the next four to seven years. The first phase of a new terminal and associated facilities are scheduled to open in 2020. This is a massive, \$3.1 billion construction project.

To stay informed of project developments and how construction may impact your travel, visit the Airport's website (slcairport.com), Twitter, Facebook and Instagram.

Sign up for emailed project updates at:
airportupdate@slcgov.com.

Services and Facilities

AIRPORT INFORMATION

801-575-2400 (See page 21 for additional phone numbers.)
airportinfo@slcgov.com

ANIMAL RELIEF STATIONS

Animal relief stations are across the street from each terminal in front of the parking garage. Another is located between Terminal Two and the International Terminal. There are grassy areas equipped with waste stations and space to exercise pets and relieve animals. There are also areas designated for the same purpose on Concourses B and E. Contact airline personnel to access these areas. For additional animal relief stations, go to www.slcairport.com.

BAG SERVICE/CURBSIDE CHECK-IN*

Alaska Airlines – 8:00 a.m. – 5:00 p.m.
Delta Air Lines – 5:00 a.m. – 11:00 p.m.
Southwest Airlines (Air Serv) – 4:30 a.m. – 8:30 p.m.
United Airlines (Bags Inc.) – 4:00 a.m. – 6:30 p.m.

*Subject to passenger volume

ATMS

ATMs (US Bank) are located inside the secure areas of the airport and serve members in the following networks: Fastbank, Pulse, Visa, Plus, MasterCard, Cirrus, Maestro, American Express, Discover, and Quest. Additional ATMs (Zions Bank) are located pre-security in Terminal One and Two, the international arrivals lobby and the rental car lobby.

CHARGING ELECTRONIC EQUIPMENT

Power outlets are available throughout the terminals. Power strips have been installed in the connector between Terminal One and Terminal Two for this purpose.

COURIER SERVICE

Federal Express drop boxes are located at the top of Concourse A in Terminal One and on the connector between Concourses C and D in Terminal Two.

CUSTOMS

Customs is housed on the first floor in the International Terminal. Hours are 8:00 a.m. to 4:30 p.m., Monday through Friday.

FAX MACHINE/PRINTER

Assistance with faxes or printing may be found at Gordon Biersch Restaurant located in Terminal One, Level 3

FOREIGN CURRENCY EXCHANGE

Travelex offers a range of currency exchange services, including foreign currency banknotes and prepaid currency cards. Customers can pre-order currency online at Travelex.com for pickup at SLC Airport. Located in Concourse D.

FREIGHT AND CARGO HANDLING

Arrangements can be made through the airlines or with over 30 companies that serve Salt Lake City.

INFANT CARE

Facilities for caring for infants are located throughout the airport. Diaper changing tables are located in most of the men's and women's restrooms.

Rooms designated as "Family Restrooms" or "Infant Care" can accommodate private nursing. These rooms are in the lobbies of both terminals. They are also located beyond the security screening checkpoints. In Terminal One, there is a room in the middle of Concourse B and lower Concourse B. In Terminal Two, rooms are located at the top of Concourse C, across from gate C-1, at the top of Concourse D, across from gates D-1 and D-6 and near gate E-60 in the lobby of Concourse E.

The "Infant Care" rooms on Concourse B, at the top of Concourse C, at the top of Concourse D, near gates D-6 and E-60 accommodate private nursing without restroom facilities.

INTERNET ACCESS—FREE WI-FI IS AVAILABLE

To access free Wi-Fi, go to SLCAirport.wifi and click connect (refer to the Wi-Fi section on page 10 for more information).

LODGING

Arrangements can be handled through direct telephone lines located at the courtesy phone center in both terminals (near baggage claim).

LOST AND FOUND

Items are handled by each airline unless lost or found in the airport itself. For airport lost and found, call 801-575-2427. Contact your airline regarding lost luggage or other items lost or found on an airplane.

LOUNGES

Cocktails, wine and beer are served in the following locations:

- Gordon Biersch Brewery Restaurant – third level of Terminal One
- Cat Cora's Kitchen – Lower Concourse B
- Squatters Pub Brewery – Concourse C
- Market Street Grill – on the connector between Concourses C and D
- Il Viaggio Italian Kitchen – Concourse D
- Vino Volo Ale House – on the connector between Concourses D and E
- High West Saloon – Concourse E

LUGGAGE CARTS

Carts are available outside both terminals, in the baggage claim areas and throughout the concourses from cash and credit card-operated machines. Sky cap service is available in front of both terminals for most airlines and in the parking garage for Terminal Two passengers only.

MAIL FACILITIES

Both terminals have mail drop boxes beyond security screening. In Terminal One, the mailbox is located near the top of Concourse A. In Terminal Two, the mailbox is on the connector between Concourses C and D, near the Delta Sky Club. Stamps are available at post-security ATMs and at select newsstands.

MEDICAL EMERGENCIES

In the airport, emergencies are handled by the Operations Division. To call for assistance, dial 801-575-2405, 801-575-2911 or "0" on a white paging phone.

Automated External Defibrillators (AEDs) and Emergency Trauma Packs are located in areas throughout the airport. Look for the AED symbol for the location of the nearest device.





NEWSSTANDS

- Sunset News – Concourse A
- Wall Street Journal News – Concourses B (lower level), E, and the connector between Concourses D and E
- The Economist – Concourse C
- CNBC News – Concourses B, C and D
- CNBC News Express – Terminal Two lobby across from the ticket counters
- Deseret News – on the connector between Concourses C and D
- KSL News – Terminal One beyond the screening checkpoint

PAGING

Paging is accomplished by dialing “0” on a white paging phone located in the telephone banks throughout the airport or by dialing 801-575-2600.

PARKING

See page 16.

PAY PHONES

Banks of pay phones are available in each terminal and the car rental lobby. Rate information is posted.

POLICE

The police can be summoned by dialing 801-575-2401 or “0” on a white paging phone or 801-575-2911 for emergencies.

RESTAURANT AND FOOD CONCESSIONS

TERMINAL ONE – LOBBY

- The Red Onion

TERMINAL ONE –

FOOD COURT – Beyond the Screening Checkpoint

- Pei Wei
- Qdoba
- Boar’s Head Deli
- Seattle’s Best Coffee

TERMINAL ONE –

THIRD LEVEL

- Gordon Biersch Brewery Restaurant



Gordon Biersch Brewery Restaurant

CONCOURSE A

- Fresh Market
- Great Wraps

**CONCOURSE B –
UPPER LEVEL**

- French Meadow Bakery & Café
- Auntie Anne’s Pretzels

**CONCOURSE B –
LOWER LEVEL**

- Cat Cora’s Kitchen
- Seattle’s Best Coffee
- Popeyes Chicken
- Wendy’s

TERMINAL TWO – LOBBY

- Starbucks Coffee –
Pre-security

**TERMINAL TWO –
UPPER LEVEL**

- Starbucks Coffee –
Top of Concourse C
- Market Street Grill –
Between Concourses C and D
- Cafe Rio – Between
Concourses C and D
- Greek Souvlaki – Between
Concourses C and D

- McDonald’s – Between
Concourses C and D

CONCOURSE C

- Squatters Pub Brewery
- Salt Lake Pizza & Pasta
- Ufood Grill
- Pinkberry Frozen Yogurt
- Millcreek Coffee Roasters

**CONCOURSE D – Top of D
including area between
Concourses D and E**

- Cat Cora’s Gourmet Market
- Manchu Wok
- Seattle’s Best Coffee
- Vino Volo Ale House
- Jamba Juice

CONCOURSE D

- Il Viaggio Italian Kitchen
- Smashburger
- Krispy Kreme Doughnuts

CONCOURSE E

- Starbucks Coffee
- High West Saloon
- Ufood Grill

SPECIALTY RETAIL, NEWS, AND GIFT CONCESSIONS

TERMINAL ONE – Beyond the Screening Checkpoint

- KSL News
- Weller Book Works

MEZZANINE LEVEL – Between Concourses A and B

- Rocky Mountain Chocolate Factory
- Brookstone
- InMotion Entertainment
- Duty Free Americas

CONCOURSE A

- Sunset News

CONCOURSE B – UPPER LEVEL

- XpresSpa
- CNBC News
- Radio Road

CONCOURSE B – LOWER LEVEL

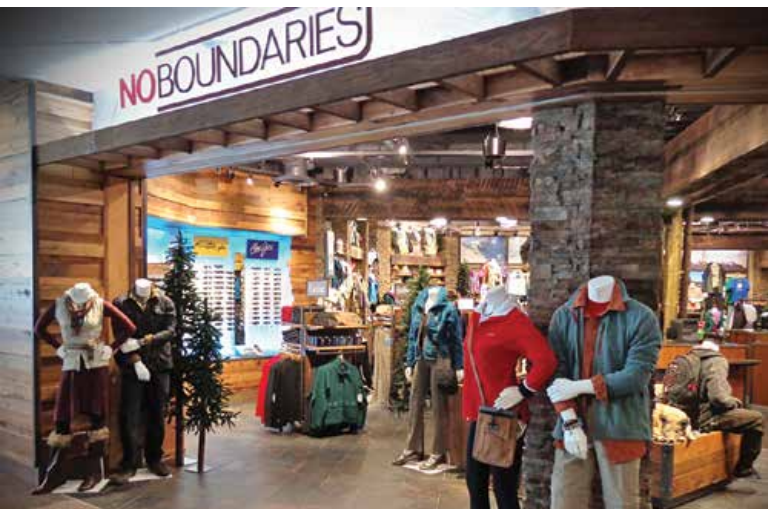
- Utah!
- Wall Street Journal News

TERMINAL TWO – LOBBY

- CNBC News Express – Terminal Two pre-security near ticket counters

TERMINAL TWO – Beyond the Screening Checkpoint

- Brighton Collectibles – Top of Concourse C
- Carry On by Brookstone – Top of Concourse C
- Deseret News – Between Concourses C and D
- InMotion Entertainment – Between Concourses C and D
- KidZoo – Top of Concourse C
- No Boundaries – Top of Concourse C
- XpresSpa – Between Concourses C and D





CONCOURSE C

- Utah Market
- CNBC News
- The Economist
- Simply Books

CONCOURSE D

- Kiehl's
- Duty Free Americas
(For domestic and international passengers)

(CONCOURSE D cont.)

- Visit Salt Lake
- CNBC News
- Rocky Mountain Chocolate Factory
- Wall Street Journal News –
Between Concourses D and E

CONCOURSE E

- Wall Street Journal News

RESTROOMS

Restrooms are located after exiting security screening in both terminals and throughout the concourses. See the information under Infant Care for details regarding additional facilities. Restrooms labeled as “Family Restrooms” are available in both terminals and allow for unisex or family needs, along with facilities for those with disabilities. They are located across from the ticket counters in Terminal One, next to the ticket counter in Terminal Two, between gates B4 and B6, and at the top of Concourse D in Terminal Two.

SALT LAKE CITY INFORMATION

Both terminals have information desks located across from the baggage claim areas. Visit www.visitsaltlake.com, www.visitutah.com, or www.visitsaltlake.mobi for more information.

SECURITY SCREENING CHECKPOINTS

There is a security screening checkpoint in each terminal at Salt Lake City International Airport. They are managed by the Transportation Security Administration (TSA). Visit the TSA website for details on preparing yourself for this process at www.tsa.gov.

Hours of Operation *(subject to change)*

Terminal One – 4:00 a.m. to midnight

(As of 10/15/17, Terminal One will be open 24 hours a day.)

Terminal Two – 4:30 a.m. to 1:00 a.m.

International Terminal screening opens as needed for international flights.

SHOESHINES

Both terminals have shoeshine stands operated by Goodfellows Shoeshine. The stand in Terminal One is located at the top of the escalators after security screening. In Terminal Two, the stand is located at the top of Concourse C.

SKYCAP SERVICE

Skycap check-in is available on the curbs in front of both terminals for Delta, United, and Southwest Airlines. Delta Air Lines offers this service inside the parking garage on the first level near the Terminal Two sky bridge entrance. Sky caps are available to assist passengers to all airline ticket counters for a fee.

SKY CLUB (DELTA AIR LINES CLUB)

Delta Air Lines' Sky Club is located in the connector between Concourses C and D.

SMOKING

Smoking, including e-cigarettes, is permitted only in designated areas in front of the terminals.

TRANSPORTATION SECURITY ADMINISTRATION (TSA)

Visit website: www.tsa.gov for packing tips and information on clearing the security screening checkpoints. TSA also offers a free smartphone app MyTSA, that provides passengers with helpful tips and information.

TRANSLATION

Assistance with translating languages is available by dialing "0" on a white paging phone.

VENDING MACHINES

Vending machines are located in the lobby of each terminal, on the concourses (except Concourse C), and on the lower level of the parking garage to accommodate after-hour needs for convenient snacks.

WI-FI

Free wireless internet service is available throughout the airport. Follow the instructions below:

1. Open your computer's wireless network connection window and select SLCAirport.wifi, then click CONNECT.
2. Once connected, start your computer's browser.
3. A security pop-up will open. Click YES to accept the terms and proceed.
4. Then Click CONNECT to receive free airport Wi-Fi.
5. The Salt Lake City International Airport homepage will then open.
6. You can now browse to your desired destination.

Art Collection

The Salt Lake City International Airport art collection is displayed throughout both terminals, most noticeably on the connectors between terminals.



Accessibility

Salt Lake City International Airport has facilities and services to accommodate those with functional needs or who need extra help.

- TDD phones in terminal lobbies and throughout the concourses
- Wheelchairs with attendants (arranged through the airlines)
- Accessible restrooms, shops and restaurants
- Elevators near the stairs and escalators

Airport personnel are available to assist customers. Use a white paging phone and dial "0" or call 801-575-2400 or 801-647-5159 to request assistance. Arrangements can also be made in advance by calling 801-647-5159. TSA Cares is a program to help travelers with disabilities through security check points. Passengers can call TSA Cares at 1-855-787-2227.

Airlines Serving Salt Lake City International Airport

AIRLINE	FLIGHT INFORMATION
Alaska Airlines alaskaair.com	800-252-7522
American Airlines aa.com	800-433-7300
Delta Air Lines delta.com	800-221-1212
Frontier Airlines flyfrontier.com	800-432-1359
JetBlue Airways jetblue.com	800-538-2583
KLM KLM.com	866-434-0320
Southwest Airlines southwest.com	800-435-9792
United Airlines united.com	800-241-6522

Telephone numbers are subject to change.

Please pay careful attention to the air carrier information on your ticket. The airline you made a reservation with may not be the one operating your flight.

General Aviation

The general aviation facilities are housed on the east side of Salt Lake City International Airport, at South Valley Regional Airport in West Jordan, and Tooele Valley Airport. Fixed base operators (FBO) serve the flying needs of private aviators at Salt Lake City International Airport. Services include aircraft sales and leasing, air charter service, aircraft parts and maintenance, fuel sales, and aircraft storage. For more information, contact the FBOs listed below:

SALT LAKE CITY INTERNATIONAL AIRPORT (EAST SIDE)

Atlantic Aviation	385-715-7192
TAC Air	801-359-2085
For hangar rental, call	801-575-2957

SOUTH VALLEY REGIONAL AIRPORT

Located at 7536 South 4470 West in West Jordan801-575-2060

Fast Facts About the Airport

- Two terminals
- Five concourses
- 71 gates
- International terminal (arrivals only)
- Four runways:
 - Runway 16L/34R—12,003 ft. long
 - Runway 16R/34L—12,000 ft. long
 - Runway 17/35—9,596 ft. long
 - Runway 14/32—5,295 ft. long
- More than 23 million passengers were served in 2016.
- The airport is within 60 miles of 10 world-class ski resorts.
- It provides convenient access to five national and 46 state parks.
- It is a gateway to 100 golf courses statewide, 24 in Salt Lake County, and 25 more within an hour's drive. Alpine courses in the nearby Wasatch Mountains are world famous.
- Salt Lake City is in the Mountain Standard Time Zone.

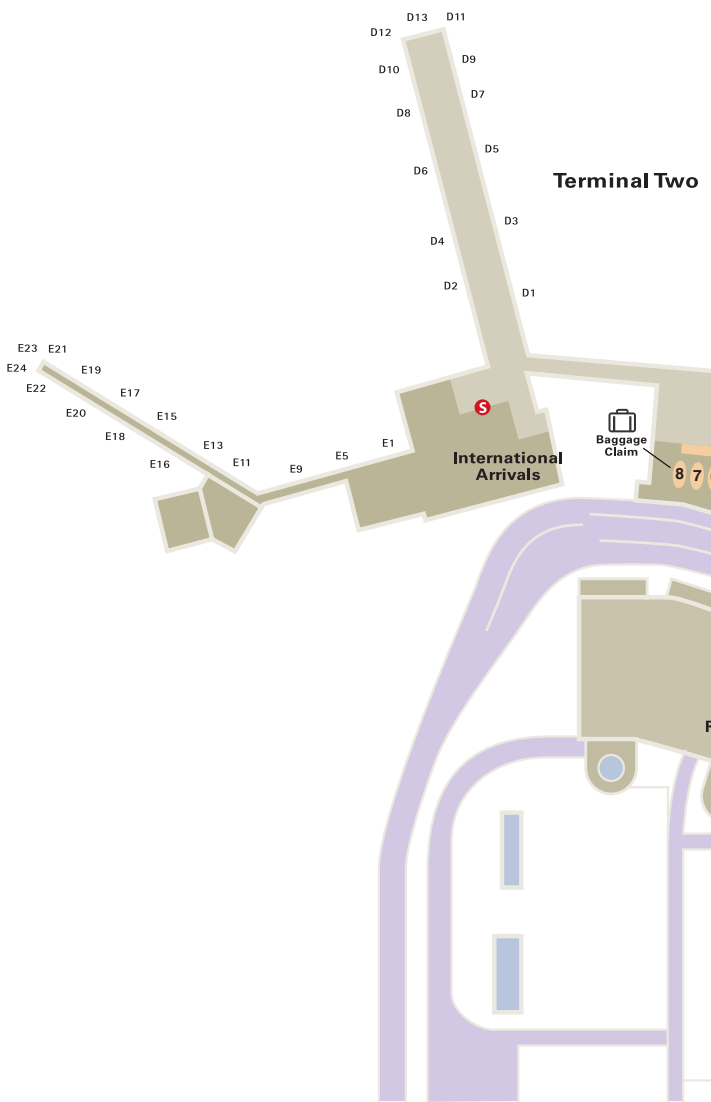
Parking

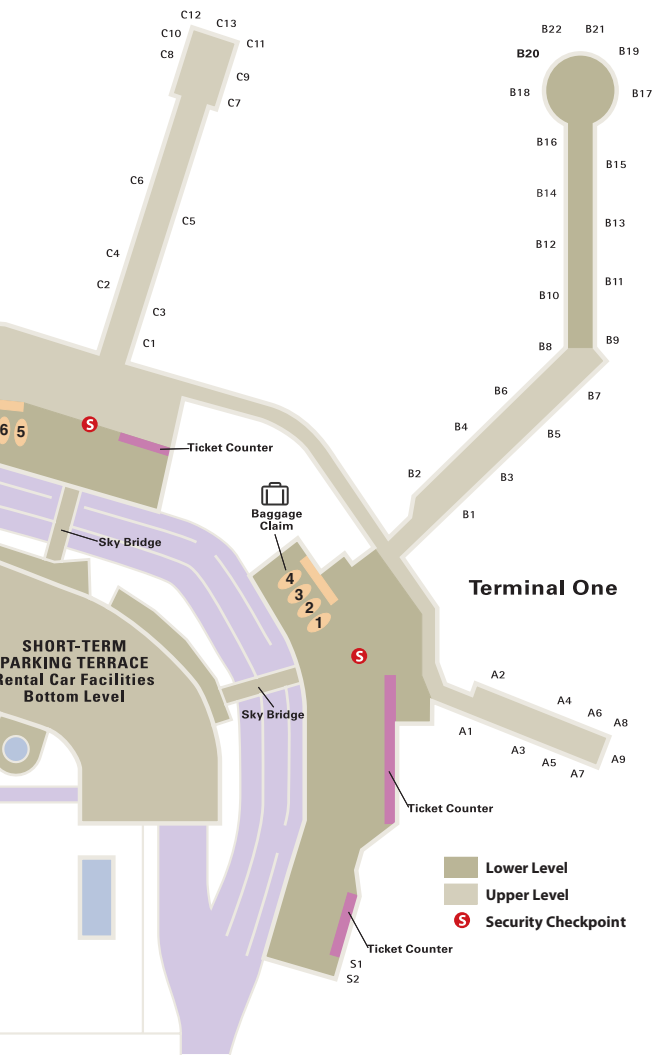
Hourly/daily and economy parking facilities are provided at the airport for passenger convenience, depending on the length of your stay. For current parking rates, call 801-575-2886 or visit www.slcparkingguide.com

The economy parking lot is located south and west of the terminal buildings. The airport provides free shuttle service between the parking lot and the terminals.

The hourly/daily parking garage is located directly southwest of the terminals. Level one is restricted to hourly parking only. Disabled parking is available on all three levels of the hourly/daily garage and around each shuttle stop in the economy lot.

Salt Lake City International Airport







PARKING AMENITIES

Users of the parking facilities have the option of paying for parking as you leave the terminals at machines located at the end of the sky bridges in both terminals. This “pay-on-foot” option allows you to pre-pay parking fees and bypass the process at the exit.

Epark is a feature that allows customers to use a major credit card to pay for parking. Customers swipe a card at the entrance to record the start time and, using designated exit lanes, swipe the same card as they leave. Parking fees are automatically charged to the card.

Premium Reserved Parking provides travelers with a guaranteed, covered parking space adjacent to the airport terminals. To reserve a space, go to www.slairport.com/parking and to the “Click and Park” option.

Click and Park is a service that allows passengers to reserve parking in advance of travel. To learn more, visit www.slairport.com/parking and to the “Click and Park” option.

For more information, call the parking system administrator at 801-575-2886.

Park and Wait Lot

There is a parking lot south of the airport complex where you can wait, free of charge, for the passenger you are picking up to arrive at the terminal curb. As you enter the airport, look for directional signage. There are flight information display boards in the lot so you can monitor flight status. When your passenger arrives, instruct them to alert you by cell phone when they are on the curb to be picked up.

A Touch ‘N Go convenience store will open in the Park and Wait Lot in November 2017. The store will include a Chevron gas station, an electric charging station, a Beans & Brews Coffee House, Burger King and Costa Vida.



GROUND TRANSPORTATION PROVIDERS WITH DESKS

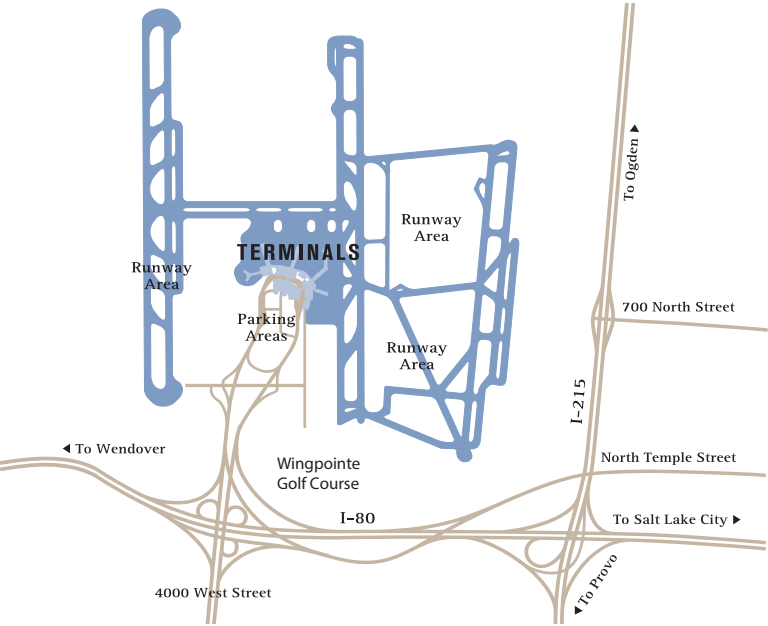
- All Resort Express toll free 800-457-9457
 local in Park City 436-649-3999
www.allresort.com
- Alta Shuttle toll free 866-274-0225
www.altashuttle.com
- Express Shuttle Canyon Transportation
 Canyon Transportation 801-245-1841
 Express Shuttle 801-596-1600
www.ExpressShuttle-CanyonTransportation.com
- Park City Transportation toll free 800-637-3803
www.parkcitytransportation.com
- SuperShuttle toll free 800-258-3826
www.SuperShuttle.com

RENTAL CARS (ON SITE)

Located in the lowest level of the parking terrace

- Alamo 801-575-2211
- Avis 801-575-2847
- Budget 801-575-2500
- Dollar 801-575-2580
- Enterprise 801-537-7433
- Firefly 801-531-3563
- Hertz 801-575-2683
- National 801-575-2277
- Payless 801-575-2847
- Thrifty 801-531-3563

Freeway Access



RENTAL CARS (OFF SITE)

Shuttle service located in front of rental car lobby.

Ace	800-977-9111
Advantage	801-521-1761
Affordable	801-288-2277
EZ	801-521-1761
Fox	855-849-4209
Go Rentals	801-893-9263
Rugged	800-977-9111

BUSES

Greyhound Bus 800-231-2222 or 801-355-9579
www.greyhound.com

Utah Transit Authority (UTA) 1-888-RIDE-UTA (743-3882)
 or 801-RIDE-UTA
www.rideuta.com

Contact UTA for bus service schedules. Bus stops are located curbside across from door 1A in Terminal One.

HOTEL COURTESY VANS

Arrangements can be made through the direct-line hotel phone banks in both baggage claim areas.



Travel Tips

- Weather conditions may affect your travel plans. Please call your airline ahead of time to check conditions and status of your flight. Allow extra time on rainy, snowy, or foggy days and during holidays. Salt Lake City weather conditions are available from the National Weather Service at www.wrh.noaa.gov/slc.
- Check with your airline regarding the time you should arrive at the gate for departure. Airlines have different guidelines, but a general rule to follow is to be in the terminal at least two hours prior to the published departure time for domestic flights, and at least three hours prior to the published departure time for international flights.
- Use luggage identification tags on all pieces and be sure your name and address are legible. Remove destination tags attached to your luggage by the airlines after every flight.
- Hand carry all prescription medicine, jewelry, currency, and important documents in your carry-on luggage.
- When you park your car at the airport, be certain to use the correct lot. Park in the hourly/daily lot for quick visits and in the economy lot for longer stays. The rates are structured in your favor if you use the correct parking area.
- Make sure that you turn off your headlights, lock your car, and take your keys (many travelers inadvertently leave keys in the car trunk while removing luggage).
- Write down the section and area you parked, or take a picture with your cell phone so you can easily find your car upon your return.
- Don't leave valuables or any visible packages, stereo equipment, telephones, etc. in your car.
- When your child travels alone, please thoroughly check the guidelines each airline provides. Be sure you inform the airline that the passenger you are booking is a child and ask for special assistance.
- Do not leave your baggage unattended.
- Check the Transportation Security Administration (TSA) web page for the latest security screening information at www.tsa.gov.



Helpful Phone Numbers

24-hour Control Center	801-575-2400
Airport Information	801-359-3273
Emergency	801-575-2405 or 801-575-2911
Environmental Information	801-575-2991
Hangar Rental	801-575-2957
Lost and Found	801-575-2427
Medical Services	801-575-2405 or 801-575-2911
Paging	801-575-2600 (or "0" on a white paging phone)
Parking	801-575-2886
Police	801-575-2401
Special Needs or In-Terminal Assistance	801-647-5159
TDD Phone	801-575-2264
Weather	801-524-3057

Concessions by Category

ALL FOOD AND DINING OPTIONS

Auntie Anne's Pretzels	Concourse B (upper level)
Boar's Head Deli	Terminal One Food Court
Cafe Rio	Terminal Two between Concourses C and D
Cat Cora's Gourmet Market	Near the top of Concourse D
Cat Cora's Kitchen	Concourse B (lower level)
French Meadow Bakery	Concourse B (upper level)
Fresh Market	Concourse A
Gordon Biersch Brewery	Terminal One (third level)
Great Wraps	Concourse A
Greek Souvlaki	Terminal Two between Concourses C and D
High West Saloon	Concourse E
Jamba Juice	Concourse D
Krispy Kreme Doughnuts	Concourse D
Manchu Wok	Between Concourses D and E
Market Street Grill	Between Concourses C and D
McDonald's	Between Concourses C and D



Millcreek Coffee	Concourse C
Pei Wei	Terminal One
Pinkberry Frozen Yogurt	Concourse C
Popeyes	Concourse B (lower level)
Qdoba	Terminal One
Red Onion	Terminal One lobby
Salt Lake Pizza & Pasta	Concourse C
Seattle's Best Coffee	Between Concourses D and E, Concourse B (lower lever), and Terminal One Food Court
Smashburger	Concourse D
Squatters Pub Brewery	Concourse C
Starbucks Coffee	Terminal Two, Concourse E, and Terminal Two, pre-security lobby
Ufood Grill	Concourses C and E
Il Viaggio Italian Kitchen	Concourse D
Vino Volo Ale House	Between Concourses D and E
Wendy's	Concourse B (lower level)

FULL SERVICE RESTAURANTS

Squatters Pub Brewery	Concourse C
Vino Volo Ale House	Between Concourses D and E
Cat Cora's Kitchen	Concourse B (lower level)
Gordon Biersch Brewery	Terminal One (third level)
High West Saloon	Concourse E
Market Street Grill	Terminal Two between Concourses C and D
Il Viaggio Italian Kitchen	Concourse D

BREAKFAST

Boar's Head Deli	Terminal One Food Court
Cafe Rio	Terminal Two between Concourses C and D
Cat Cora's Kitchen	Concourse B (lower level)
French Meadow Bakery	Concourse B (upper level)
Fresh Market	Concourse A
Gordon Biersch Brewery	Terminal One (third level)
Great Wraps	Concourse A
Greek Souvlaki	Terminal Two between Concourses C and D
High West Saloon	Concourse E
Krispy Kreme Doughnuts	Concourse D
Market Street Grill	Between Concourses C and D

Manchu Wok	Between Concourses D and E
McDonald's	Between Concourses C and D
Millcreek Coffee	Concourse C
Popeyes	Concourse B (lower level)
Qdoba	Terminal One Food Court
Red Onion	Terminal One lobby
Salt Lake Pizza & Pasta	Concourse C
Seattle's Best Coffee	Between Concourses D and E, Concourse B (lower level), and Terminal One Food Court
Smashburger	Concourse D
Squatters Pub Brewery	Concourse C
Starbucks Coffee	Terminal Two, Concourse E, and Terminal Two, pre-security lobby
Ufood Grill	Concourses C and E
Il Viaggio Italian Kitchen	Concourse D
Vino Volo Ale House	Between Concourses D and E
Wendy's	Concourse B (lower level)

COFFEE SHOPS

Krispy Kreme Doughnuts	Concourse D
Millcreek Coffee	Concourse C
Red Onion	Terminal One lobby
Seattle's Best Coffee	Between Concourses D and E, Concourse B (lower level), and Terminal One Food Court
Starbucks Coffee	Terminal Two, Concourse E, and Terminal Two lobby

LOUNGES

Squatters Pub Brewery	Concourse C
Vino Volo Ale House	Between Concourses D and E
Cat Cora's Kitchen	Concourse B (lower level)
Gordon Biersch Brewery	Terminal One (third level)
High West Saloon	Concourse E
Market Street Grill	Terminal Two between Concourses C and D
Il Viaggio Italian Kitchen	Concourse D



SERVICES

ATMs	Located in both terminals and throughout the concourses
Information Desks	Both terminal lobbies – baggage claim
Goodfellows Shoeshine	Top of escalators Terminal One, Top of Concourse C Terminal Two
U.S. Mail Boxes	Terminal One near the top of Concourse A, Terminal Two on the connector between Concourses C and D
XpresSpa	Concourse B and Terminal Two between Concourses C and D
Traveler	Foreign currency exchange, Concourse D

SHOPPING

Brighton Collectibles	Terminal Two top of Concourse C
Brookstone	Terminal One between Concourses A and B
Carry On	Terminal Two top of Concourse C
CNBC News	Concourse B (upper level), C and D
CNBC News Express	Terminal Two lobby near airline ticket counters
Deseret News	Terminal Two between Concourses C and D
Duty Free Americas	Concourse D, Terminal One between Concourses A and B
InMotion Entertainment	Terminal One between Concourses A and B, and between Concourses C and D
KidZoo	Terminal Two top of Concourse C
Kieh!' s	Terminal Two near the top of Concourse D
KSL News	Terminal One beyond security screening
No Boundaries	Terminal Two top of Concourse C
Radio Road	Concourse B (upper level)
Rocky Mountain Chocolate Factory	Terminal One between Concourses A and B, Terminal Two Concourse D
Weller Book Works	Terminal One beyond security screening
Simply Books	Concourse C
Sunset News	Concourse A
The Economist	Concourse C
Utah!	Concourse B (lower level)
Utah Market	Concourse C
Visit Salt Lake	Concourse D
Wall Street Journal News	Concourse B (lower level), Concourse E, and between Concourses D and E
XpresSpa	Concourse B and Terminal Two between Concourses C and D

Most restaurants and shops open between 5:30 a.m. and 6:00 a.m. and close around 10:00 p.m.

Gordon Biersch Brewery, Cat Cora's Kitchen and Squatters stay open later. Hours of operation depend on passenger activity and airline operations.

Hours may be reduced some days of the week based on flight schedules.

Vending machines are available in the lobbies of both terminals and on most concourses.

AMERICANS WITH DISABILITIES ACT (ADA)

In accordance with the requirements of Title II of the Americans with Disabilities Act of 1990, Salt Lake City Corporation does not discriminate against qualified individuals with disabilities on the basis of disability in the City's services, programs or activities, or employment practices.

Information, comments, and/or complaints concerning the accessibility of Salt Lake City International Airports programs, services or activities as they relate to people with disabilities should be directed to the Airports ADA Coordinator, Gary Bilbrey, P.O. Box 145550, Salt Lake City, Utah, 84114, 801-575-2909, 801-575-2786 (fax), 801-575-2264 (TDD), gary.bilbrey@slcgov.com.

For matters relating to employment, contact the Human Resources Management Division, 451 South State, Room 115, Salt Lake City, Utah, 84111, 801-535-7900, 801-535-6614 (fax), 801-535-7218 (TDD).





SLC

Contact Information:

776 North Terminal Drive
Salt Lake City, Utah 84116

P.O. Box 145550
Salt Lake City, Utah 84114

800-595-2442 | 801-575-2400

www.slcairport.com



Helpful Websites:

Utah Office of Tourism

www.visitutah.com

Ski Utah

www.skiutah.com

Visit Salt Lake

www.visitsaltlake.com

www.visitsaltlake.mobi



The information contained in this publication is current as of September 2017

